

DATE:	January 21, 2025
DESIGNED BY:	J. Whritenour
DRAWN BY:	E. Lambert

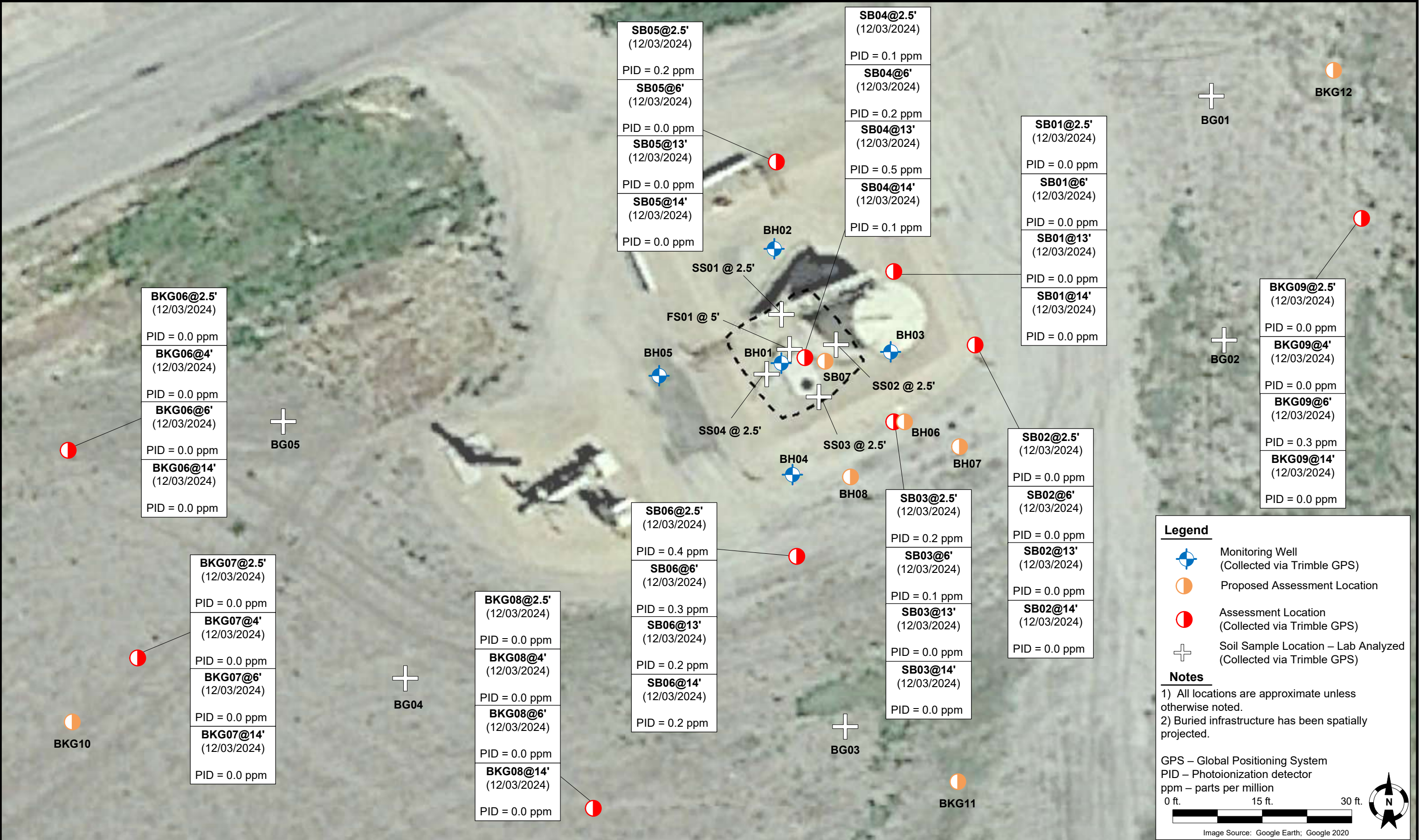


Tasman, Inc.
6855 W 119th Avenue
Broomfield, CO 80020

Noble Energy, Inc. – 100322 – DJ Basin
Matsushima-PMK 2-1
NENE, Section 2, Township 4 North, Range 66 West
Weld County, Colorado

Soil Boring Location Map

Figure 1



DATE:	January 21, 2025
DESIGNED BY:	J. Whritenour
DRAWN BY:	E. Lambert



Tasman, Inc.
6855 W 119th Avenue
Broomfield, CO 80020

Noble Energy, Inc. – 100322 – DJ Basin
Matsushima-PMK 2-1
NENE, Section 2, Township 4 North, Range 66 West
Weld County, Colorado

Proposed Soil Boring
Location Map

Figure 3

TABLE 1
FIELD DATA SUMMARY TABLE
NOBLE ENERGY, INC. 100322
FORMER MATSUSHIMA-PMK 2-1 TANK BATTERY, WELD COUNTY, COLORADO
REM # 29940

Sample ID	Sample Date	Depth (ft. bgs)	GPS Data Latitude/Longitude		PDOP Value	VOC Concentration (ppm)
AST01@0.5'	10/06/23	0.5	40.347163	-104.737293	1.0	0.6
FS01@5'	10/06/23	5	40.347152	-104.737363	1.0	1,008
SEP01-DL@3'	10/06/23	3	40.347106	-104.737483	0.9	1.0
SS01@2.5'	10/06/23	2.5	40.347168	-104.737366	1.2	5.6
SS02@2.5'	10/06/23	2.5	40.347154	-104.737333	1.1	3.3
SS03@2.5'	10/06/23	2.5	40.347130	-104.737344	1.0	3.4
SS04@2.5'	10/06/23	2.5	40.347140	-104.737375	1.1	1.0
BH01@2.5'	11/30/23	2.5	40.347152	-104.737363	NC	4.3
BH01@6'	11/30/23	6	40.347152	-104.737363	NC	1.1
BH01@8'	11/30/23	8	40.347152	-104.737363	NC	119
BH01@13'	11/30/23	13	40.347152	-104.737363	NC	0.1
BH02@2.5'	11/30/23	2.5	40.347204	-104.737370	NC	0.2
BH02@6'	11/30/23	6	40.347204	-104.737370	NC	0.3
BH02@8'	11/30/23	8	40.347204	-104.737370	NC	0.4
BH02@13'	11/30/23	13	40.347204	-104.737370	NC	0.4
BH03@2.5'	11/30/23	2.5	40.347152	-104.737296	NC	0.3
BH03@6'	11/30/23	6	40.347152	-104.737296	NC	0.2
BH03@8'	11/30/23	8	40.347152	-104.737296	NC	1.0
BH03@12'	11/30/23	12	40.347152	-104.737296	NC	0.0
BH04@2.5'	11/30/23	2.5	40.347100	-104.737360	NC	0.2
BH04@6'	11/30/23	6	40.347100	-104.737360	NC	0.1

TABLE 1
FIELD DATA SUMMARY TABLE
NOBLE ENERGY, INC. 100322
FORMER MATSUSHIMA-PMK 2-1 TANK BATTERY, WELD COUNTY, COLORADO
REM # 29940

Sample ID	Sample Date	Depth (ft. bgs)	GPS Data Latitude/Longitude		PDOP Value	VOC Concentration (ppm)
BH04@8'	11/30/23	8	40.347100	-104.737360	NC	0.2
BH04@12'	11/30/23	12	40.347100	-104.737360	NC	0.2
BH05@2.5'	11/30/23	2.5	40.347147	-104.737439	NC	0.1
BH05@6'	11/30/23	6	40.347147	-104.737439	NC	0.1
BH05@8'	11/30/23	8	40.347147	-104.737439	NC	0.1
BH05@12'	11/30/23	12	40.347147	-104.737439	NC	0.4
BG01@2.5'	11/30/23	2.5	40.347271	-104.737104	NC	0.1
BG01@6'	11/30/23	6	40.347271	-104.737104	NC	0.0
BG01@8'	11/30/23	8	40.347271	-104.737104	NC	0.1
BG01@13'	11/30/23	13	40.347271	-104.737104	NC	0.1
BG02@2.5'	11/30/23	2.5	40.347143	-104.737101	NC	0.2
BG02@6'	11/30/23	6	40.347143	-104.737101	NC	0.0
BG02@8'	11/30/23	8	40.347143	-104.737101	NC	0.2
BG02@13'	11/30/23	13	40.347143	-104.737101	NC	0.0
BG03@2.5'	11/30/23	2.5	40.346991	-104.737329	NC	0.1
BG03@6'	11/30/23	6	40.346991	-104.737329	NC	0.0
BG03@8'	11/30/23	8	40.346991	-104.737329	NC	0.0
BG03@13'	11/30/23	13	40.346991	-104.737329	NC	0.0
BG04@2.5'	11/30/23	2.5	40.346998	-104.737599	NC	0.0
BG04@6'	11/30/23	6	40.346998	-104.737599	NC	0.0
BG04@8'	11/30/23	8	40.346998	-104.737599	NC	0.0

TABLE 1
FIELD DATA SUMMARY TABLE
NOBLE ENERGY, INC. 100322
FORMER MATSUSHIMA-PMK 2-1 TANK BATTERY, WELD COUNTY, COLORADO
REM # 29940

Sample ID	Sample Date	Depth (ft. bgs)	GPS Data Latitude/Longitude		PDOP Value	VOC Concentration (ppm)
BG04@13'	11/30/23	13	40.346998	-104.737599	NC	0.0
BG05@2.5'	11/30/23	2.5	40.347121	-104.737668	NC	0.0
BG05@6'	11/30/23	6	40.347121	-104.737668	NC	0.0
BG05@8'	11/30/23	8	40.347121	-104.737668	NC	0.0
BG05@13'	11/30/23	13	40.347121	-104.737668	NC	0.2
BH06@4-5'	04/18/2024	4-5	NC	NC	NC	0.2
BG06@2-3'	04/18/2024	2-3	40.346742	-104.737461	NC	0.1
BG06@4-5'	04/18/2024	4-5	40.346742	-104.737461	NC	0.1
BG07@2-3'	04/18/2024	2-3	NC	NC	NC	0.4
BG07@4-5'	04/18/2024	4-5	NC	NC	NC	0.0
BG08@2-3'	04/18/2024	2-3	NC	NC	NC	0.1
BG08@4-5'	04/18/2024	4-5	NC	NC	NC	0.2
BG09@2-3'	04/18/2024	2-3	NC	NC	NC	0.1
BG09@4-5'	04/18/2024	4-5	NC	NC	NC	0.1
BG10@2-3'	04/18/2024	2-3	40.346632	-104.737480	NC	0.1
BG10@4-5'	04/18/2024	4-5	40.346632	-104.737480	NC	0.1
SB01@2.5'	12/03/2024	2.5	40.347191	-104.737297	NC	0.0
SB01@6'	12/03/2024	6	40.347191	-104.737297	NC	0.0
SB01@13'	12/03/2024	13	40.347191	-104.737297	NC	0.0
SB01@14'	12/03/2024	14	40.347191	-104.737297	NC	0.0
SB02@2.5'	12/03/2024	2.5	40.347156	-104.737248	NC	0.0

TABLE 1
FIELD DATA SUMMARY TABLE
NOBLE ENERGY, INC. 100322
FORMER MATSUSHIMA-PMK 2-1 TANK BATTERY, WELD COUNTY, COLORADO
REM # 29940

Sample ID	Sample Date	Depth (ft. bgs)	GPS Data Latitude/Longitude		PDOP Value	VOC Concentration (ppm)
SB02@6'	12/03/2024	6	40.347156	-104.737248	NC	0.0
SB02@13'	12/03/2024	13	40.347156	-104.737248	NC	0.0
SB02@14'	12/03/2024	14	40.347156	-104.737248	NC	0.0
SB03@2.5'	12/03/2024	2.5	40.347120	-104.737299	NC	0.2
SB03@6'	12/03/2024	6	40.347120	-104.737299	NC	0.1
SB03@13'	12/03/2024	13	40.347120	-104.737299	NC	0.0
SB03@14'	12/03/2024	14	40.347120	-104.737299	NC	0.0
SB04@2.5'	12/03/2024	2.5	40.347154	-104.737354	NC	0.1
SB04@6'	12/03/2024	6	40.347154	-104.737354	NC	0.2
SB04@13'	12/03/2024	13	40.347154	-104.737354	NC	0.5
SB04@14'	12/03/2024	14	40.347154	-104.737354	NC	0.2
SB05@2.5'	12/03/2024	2.5	40.347241	-104.737370	NC	0.2
SB05@6'	12/03/2024	6	40.347241	-104.737370	NC	0.0
SB05@13'	12/03/2024	13	40.347241	-104.737370	NC	0.0
SB05@14'	12/03/2024	14	40.347241	-104.737370	NC	0.0
SB06@2.5'	12/03/2024	2.5	40.347057	-104.737359	NC	0.4
SB06@6'	12/03/2024	6	40.347057	-104.737359	NC	0.3
SB06@13'	12/03/2024	13	40.347057	-104.737359	NC	0.2
SB06@14'	12/03/2024	14	40.347057	-104.737359	NC	0.2
BKG06@2.5'	12/03/2024	2.5	40.347113	-104.737808	NC	0.0
BKG06@4'	12/03/2024	4	40.347113	-104.737808	NC	0.0

TABLE 1
FIELD DATA SUMMARY TABLE
NOBLE ENERGY, INC. 100322
FORMER MATSUSHIMA-PMK 2-1 TANK BATTERY, WELD COUNTY, COLORADO
REM # 29940

Sample ID	Sample Date	Depth (ft. bgs)	GPS Data Latitude/Longitude		PDOP Value	VOC Concentration (ppm)
BKG06@6'	12/03/2024	6	40.347113	-104.737808	NC	0.0
BKG06@14'	12/03/2024	14	40.347113	-104.737808	NC	0.0
BKG07@2.5'	12/03/2024	2.5	40.347012	-104.737765	NC	0.0
BKG07@4'	12/03/2024	4	40.347012	-104.737765	NC	0.0
BKG07@6'	12/03/2024	6	40.347012	-104.737765	NC	0.0
BKG07@14'	12/03/2024	14	40.347012	-104.737765	NC	0.0
BKG08@2.5'	12/03/2024	2.5	40.346940	-104.737486	NC	0.0
BKG08@4'	12/03/2024	4	40.346940	-104.737486	NC	0.0
BKG08@6'	12/03/2024	6	40.346940	-104.737486	NC	0.0
BKG08@14'	12/03/2024	14	40.346940	-104.737486	NC	0.0
BKG09@2.5'	12/03/2024	2.5	40.347214	-104.737016	NC	0.0
BKG09@4'	12/03/2024	4	40.347214	-104.737016	NC	0.0
BKG09@6'	12/03/2024	6	40.347214	-104.737016	NC	0.3
BKG09@14'	12/03/2024	14	40.347214	-104.737016	NC	0.0

Notes:

1. Global Positioning System (GPS) data is provided in decimal degrees using North American Datum (NAD) 83 UTM Zone 13 North.
2. Volatile organic compound (VOC) concentrations are measured in the field using a photoionization detector (PID).

PDOP = Position Dilution of Precision

ppm = Parts per million

ft. = Feet

bgs = Below ground surface

NC = Data not collected

TABLE 2
SUMMARY OF VOLATILE ORGANIC SOIL CHEMISTRY DATA
NOBLE ENERGY, INC. 100322
FORMER MATSUSHIMA-PMK 2-1 TANK BATTERY, WELD COUNTY, COLORADO
REM # 29940

Sample ID	Sample Date	Depth (ft. bgs)	Benzene (mg/kg)	Toluene (mg/kg)	Ethyl-Benzene (mg/kg)	Xylenes (mg/kg)	1,2,4- Trimethyl- Benzene (mg/kg)	1,3,5- Trimethyl- Benzene (mg/kg)	Napthalene (mg/kg)	TPH (mg/kg)	TPH GRO (mg/kg)	TPH DRO (mg/kg)	TPH ORO (mg/kg)
ECMC Table 915-1 Limits (Residential SSL)			1.2	490	5.8	58	30	27	2	500	500**		
ECMC Table 915-1 Limits (Protection of Groundwater SSL)			0.0026	0.69	0.78	9.9	0.0081	0.0087	0.0038	500	500**		
AST01@0.5'	10/06/23	0.5	<0.0020	<0.0050	<0.0050	<0.010	<0.0050	<0.0050	<0.0038	<500	<0.50	<50	<50
FS01@5'	10/06/23	5	<0.0020	<0.0050	<0.0050	<0.010	11	<0.0050	0.054	570	450	120	<50
SEP01-DL@3'	10/06/23	3	<0.0020	<0.0050	<0.0050	<0.010	<0.0050	<0.0050	<0.0038	<500	<0.50	<50	<50
SS01@2.5'	10/06/23	2.5	<0.0020	<0.0050	<0.0050	<0.010	<0.0050	<0.0050	<0.0038	<500	<0.50	<50	<50
SS02@2.5'	10/06/23	2.5	<0.0020	<0.0050	<0.0050	<0.010	<0.0050	<0.0050	<0.0038	<500	<0.50	<50	<50
SS03@2.5'	10/06/23	2.5	<0.0020	<0.0050	<0.0050	<0.010	<0.0050	<0.0050	<0.0038	<500	<0.50	<50	<50
SS04@2.5'	10/06/23	2.5	<0.0020	<0.0050	<0.0050	<0.010	<0.0050	<0.0050	<0.0038	<500	<0.50	<50	<50
BH01@2.5'	11/30/23	2.5	<0.0020	<0.0050	<0.0050	<0.010	<0.0050	<0.0050	<0.0038	<500	<0.50	<50	<50
BH01@6'	11/30/23	6	<0.0020	<0.0050	<0.0050	<0.010	<0.0050	<0.0050	<0.0038	116	30	86	<50
BH01@8'	11/30/23	8	0.054	<0.0050	0.011	<0.010	0.016	<0.0050	0.029	13	13	<50	<50
BH01@13'	11/30/23	13	<0.0020	<0.0050	<0.0050	<0.010	<0.0050	<0.0050	<0.0038	<500	<0.50	<50	<50
BH02@2.5'	11/30/23	2.5	<0.0020	<0.0050	<0.0050	<0.010	<0.0050	<0.0050	<0.0038	<500	<0.50	<50	<50
BH02@6'	11/30/23	6	<0.0020	<0.0050	<0.0050	<0.010	<0.0050	<0.0050	<0.0038	<500	<0.50	<50	<50
BH02@8'	11/30/23	8	<0.0020	<0.0050	<0.0050	<0.010	<0.0050	<0.0050	<0.0038	<500	<0.50	<50	<50
BH02@13'	11/30/23	13	<0.0020	<0.0050	<0.0050	<0.010	<0.0050	<0.0050	<0.0038	<500	<0.50	<50	<50
BH03@2.5'	11/30/23	2.5	<0.0020	<0.0050	<0.0050	<0.010	<0.0050	<0.0050	<0.0038	<500	<0.50	<50	<50
BH03@6'	11/30/23	6	<0.0020	<0.0050	<0.0050	<0.010	<0.0050	<0.0050	<0.0038	<500	<0.50	<50	<50
BH03@8'	11/30/23	8	<0.0020	<0.0050	<0.0050	<0.010	<0.0050	<0.0050	<0.0038	1.0	1.0	<50	<50
BH03@12'	11/30/23	12	<0.0020	<0.0050	<0.0050	<0.010	<0.0050	<0.0050	<0.0038	<500	<0.50	<50	<50
BH04@2.5'	11/30/23	2.5	<0.0020	<0.0050	<0.0050	<0.010	<0.0050	<0.0050	<0.0038	<500	<0.50	<50	<50
BH04@6'	11/30/23	6	<0.0020	<0.0050	<0.0050	<0.010	<0.0050	<0.0050	<0.0038	<500	<0.50	<50	<50
BH04@8'	11/30/23	8	<0.0020	<0.0050	<0.0050	<0.010	<0.0050	<0.0050	<0.0038	<500	<0.50	<50	<50
BH04@12'	11/30/23	12	<0.0020	<0.0050	<0.0050	<0.010	<0.0050	<0.0050	<0.0038	<500	<0.50	<50	<50
BH05@2.5'	11/30/23	2.5	<0.0020	<0.0050	<0.0050	<0.010	<0.0050	<0.0050	<0.0038	<500	<0.50	<50	<50
BH05@6'	11/30/23	6	<0.0020	<0.0050	<0.0050	<0.010	<0.0050	<0.0050	<0.0038	<500	<0.50	<50	<50
BH05@8'	11/30/23	8	<0.0020	<0.0050	<0.0050	<0.010	<0.0050	<0.0050	<0.0038	<500	<0.50	<50	<50
BH05@12'	11/30/23	12	<0.0020	<0.0050	<0.0050	<0.010	<0.0050	<0.0050	<0.0038	<500	<0.50	<50	<50
SB01@2.5'	12/03/2024	2.5	<0.0020	<0.0050	<0.0050	<0.010	<0.0050	<0.0050	<0.0038	<500	<0.50	<50	<50
SB01@6'	12/03/2024	6	<0.0020	<0.0050	<0.0050	<0.010	<0.0050	<0.0050	<0.0038	<500	<0.50	<50	<50
SB01@13'	12/03/2024	13	<0.0020	<0.0050	<0.0050	<0.010	<0.0050	<0.0050	<0.0038	<500	<0.50	<50	<50
SB01@14'	12/03/2024	14	<0.0020	<0.0050	<0.0050	<0.010	<0.0050	<0.0050	<0.0038	<500	<0.50	<50	<50
SB02@2.5'	12/03/2024	2.5	<0.0020	<0.0050	<0.0050	<0.010	<0.0050	<0.0050	<0.0038	<500	<0.50	<50	<50

TABLE 2
SUMMARY OF VOLATILE ORGANIC SOIL CHEMISTRY DATA
NOBLE ENERGY, INC. 100322
FORMER MATSUSHIMA-PMK 2-1 TANK BATTERY, WELD COUNTY, COLORADO
REM # 29940

Sample ID	Sample Date	Depth (ft. bgs)	Benzene (mg/kg)	Toluene (mg/kg)	Ethyl-Benzene (mg/kg)	Xylenes (mg/kg)	1,2,4- Trimethyl- Benzene (mg/kg)	1,3,5- Trimethyl- Benzene (mg/kg)	Napthalene (mg/kg)	TPH (mg/kg)	TPH GRO (mg/kg)	TPH DRO (mg/kg)	TPH ORO (mg/kg)
ECMC Table 915-1 Limits (Residential SSL)			1.2	490	5.8	58	30	27	2	500	500**		
ECMC Table 915-1 Limits (Protection of Groundwater SSL)			0.0026	0.69	0.78	9.9	0.0081	0.0087	0.0038	500	500**		
SB02@6'	12/03/2024	6	<0.0020	<0.0050	<0.0050	<0.010	<0.0050	<0.0050	<0.0038	<500	<0.50	<50	<50
SB02@13'	12/03/2024	13	<0.0020	<0.0050	<0.0050	<0.010	<0.0050	<0.0050	<0.0038	<500	<0.50	<50	<50
SB02@14'	12/03/2024	14	<0.0020	<0.0050	<0.0050	<0.010	<0.0050	<0.0050	<0.0038	<500	<0.50	<50	<50
SB03@2.5'	12/03/2024	2.5	<0.0020	<0.0050	<0.0050	<0.010	<0.0050	<0.0050	<0.0038	<500	<0.50	<50	<50
SB03@6'	12/03/2024	6	<0.0020	<0.0050	<0.0050	<0.010	<0.0050	<0.0050	<0.0038	<500	<0.50	<50	<50
SB03@13'	12/03/2024	13	<0.0020	<0.0050	<0.0050	<0.010	<0.0050	<0.0050	<0.0038	<500	<0.50	<50	<50
SB03@14'	12/03/2024	14	<0.0020	<0.0050	<0.0050	<0.010	<0.0050	<0.0050	<0.0038	<500	<0.50	<50	<50
SB04@2.5'	12/03/2024	2.5	<0.0020	<0.0050	<0.0050	<0.010	<0.0050	<0.0050	<0.0038	<500	<0.50	<50	<50
SB04@6'	12/03/2024	6	<0.0020	<0.0050	<0.0050	<0.010	0.050	<0.0050	0.009	1.3	1.3	<50	<50
SB04@13'	12/03/2024	13	<0.0020	<0.0050	<0.0050	<0.010	<0.0050	<0.0050	<0.0038	<500	<0.50	<50	<50
SB04@14'	12/03/2024	14	<0.0020	<0.0050	<0.0050	<0.010	<0.0050	<0.0050	<0.0038	<500	<0.50	<50	<50
SB05@2.5'	12/03/2024	2.5	<0.0020	<0.0050	<0.0050	<0.010	<0.0050	<0.0050	<0.0038	<500	<0.50	<50	<50
SB05@6'	12/03/2024	6	<0.0020	<0.0050	<0.0050	<0.010	<0.0050	<0.0050	<0.0038	<500	<0.50	<50	<50
SB05@13'	12/03/2024	13	<0.0020	<0.0050	<0.0050	<0.010	<0.0050	<0.0050	<0.0038	<500	<0.50	<50	<50
SB05@14'	12/03/2024	14	<0.0020	<0.0050	<0.0050	<0.010	<0.0050	<0.0050	<0.0038	<500	<0.50	<50	<50
SB06@2.5'	12/03/2024	2.5	<0.0020	<0.0050	<0.0050	<0.010	<0.0050	<0.0050	<0.0038	<500	<0.50	<50	<50
SB06@6'	12/03/2024	6	<0.0020	<0.0050	<0.0050	<0.010	<0.0050	<0.0050	<0.0038	<500	<0.50	<50	<50
SB06@13'	12/03/2024	13	<0.0020	<0.0050	<0.0050	<0.010	<0.0050	<0.0050	<0.0038	<500	<0.50	<50	<50
SB06@14'	12/03/2024	14	<0.0020	<0.0050	<0.0050	<0.010	<0.0050	<0.0050	<0.0038	<500	<0.50	<50	<50

Notes:

1. **Bold** values exceed the ECMC Table 915-1 limit(s).
 2. Pink & blue highlighted soil analytical values indicate an exceedance of the referenced soil screening level (SSL).
 3. * Indicates laboratory minimum detection limit in excess of SSL.
 4. ** Summation of GRO+DRO+ORO must be less than 500 mg/kg.
- ECMC = Energy & Carbon Management Commission
(<) = Analytical result is less than the indicated laboratory reporting limit.
TPH-GRO = Total petroleum hydrocarbons - gasoline range organics
TPH-DRO = Total petroleum hydrocarbons - diesel range organics
TPH-ORO = Total petroleum hydrocarbons - oil range organics
mg/kg = Milligrams per kilogram
ft. = Feet
bgs = Below ground surface

TABLE 3
SUMMARY OF POLYCYCLIC AROMATIC HYDROCARBON SOIL CHEMISTRY DATA
NOBLE ENERGY, INC. 100322
FORMER MATSUSHIMA-PMK 2-1 TANK BATTERY, WELD COUNTY, COLORADO
REM # 29940

Sample ID	Sample Date	Depth (ft. bgs)	Acenaphthene (mg/kg)	Anthracene (mg/kg)	Benzo (a) Anthracene (mg/kg)	Benzo (a) Pyrene (mg/kg)	Benzo (b) Fluoranthene (mg/kg)	Benzo (k) Fluoranthene (mg/kg)	Chrysene (mg/kg)	Dibenzo (a,h) Anthracene (mg/kg)	Fluoranthene (mg/kg)	Fluorene (mg/kg)	Indeno (1,2,3- cd) Pyrene (mg/kg)	Pyrene (mg/kg)	1-Methyl - Naphthalene (mg/kg)	2-Methyl- Naphthalene (mg/kg)
ECMC Table 915-1 Limits (Residential SSL)			360	1,800	1.1	0.11	1.1	11	110	0.11	240	240	1.1	180	18	24
ECMC Table 915-1 Limits (Protection of Groundwater SSL)			0.55	5.8	0.011	0.24	0.3	2.9	9	0.096	8.9	0.54	0.98	1.3	0.006	0.019
AST01@0.5'	10/06/23	0.5	<0.00500	<0.00500	<0.00500	<0.00500	<0.00500	<0.00500	<0.00500	<0.00500	<0.00500	<0.00500	<0.00500	<0.00500	<0.00500	<0.00500
FS01@5'	10/06/23	5	<0.00500	<0.00500	<0.00500	<0.00500	<0.00500	<0.00500	<0.00500	<0.00500	<0.00500	0.0206	<0.00500	<0.00500	0.0228	0.269
SEP01-DL@3'	10/06/23	3	<0.00500	<0.00500	<0.00500	<0.00500	<0.00500	<0.00500	<0.00500	<0.00500	<0.00500	<0.00500	<0.00500	<0.00500	<0.00500	<0.00500
SS01@2.5'	10/06/23	2.5	<0.00500	<0.00500	<0.00500	<0.00500	<0.00500	<0.00500	<0.00500	<0.00500	<0.00500	<0.00500	<0.00500	<0.00500	<0.00500	<0.00500
SS02@2.5'	10/06/23	2.5	<0.00500	<0.00500	<0.00500	<0.00500	<0.00500	<0.00500	<0.00500	<0.00500	<0.00500	<0.00500	<0.00500	<0.00500	<0.00500	<0.00500
SS03@2.5'	10/06/23	2.5	<0.00500	<0.00500	<0.00500	<0.00500	<0.00500	<0.00500	<0.00500	<0.00500	<0.00500	<0.00500	<0.00500	<0.00500	<0.00500	<0.00500
SS04@2.5'	10/06/23	2.5	<0.00500	<0.00500	<0.00500	<0.00500	<0.00500	<0.00500	<0.00500	<0.00500	<0.00500	<0.00500	<0.00500	<0.00500	<0.00500	<0.00500
BH01@2.5'	11/30/23	2.5	<0.00500	<0.00500	<0.00500	<0.00500	<0.00500	<0.00500	<0.00500	<0.00500	<0.00500	<0.00500	<0.00500	<0.00500	<0.00500	<0.00500
BH01@6'	11/30/23	6	<0.00500	<0.00500	<0.00500	<0.00500	<0.00500	<0.00500	<0.00500	<0.00500	<0.00500	<0.00500	<0.00500	<0.00500	<0.00500	<0.00500
BH01@8'	11/30/23	8	<0.00500	<0.00500	<0.00500	<0.00500	<0.00500	<0.00500	<0.00500	<0.00500	<0.00500	<0.00500	<0.00500	<0.00500	0.00226	0.0621
BH01@13'	11/30/23	13	<0.00500	<0.00500	<0.00500	<0.00500	<0.00500	<0.00500	<0.00500	<0.00500	<0.00500	<0.00500	<0.00500	<0.00500	<0.00500	<0.00500
BH02@2.5'	11/30/23	2.5	<0.00500	<0.00500	<0.00500	<0.00500	<0.00500	<0.00500	<0.00500	<0.00500	<0.00500	<0.00500	<0.00500	<0.00500	<0.00500	<0.00500
BH02@6'	11/30/23	6	<0.00500	<0.00500	<0.00500	<0.00500	<0.00500	<0.00500	<0.00500	<0.00500	<0.00500	<0.00500	<0.00500	<0.00500	<0.00500	<0.00500
BH02@8'	11/30/23	8	<0.00500	<0.00500	<0.00500	<0.00500	<0.00500	<0.00500	<0.00500	<0.00500	<0.00500	<0.00500	<0.00500	<0.00500	<0.00500	<0.00500
BH02@13'	11/30/23	13	<0.00500	<0.00500	<0.00500	<0.00500	<0.00500	<0.00500	<0.00500	<0.00500	<0.00500	<0.00500	<0.00500	<0.00500	<0.00500	<0.00500
BH03@2.5'	11/30/23	2.5	<0.00500	<0.00500	<0.00500	<0.00500	<0.00500	<0.00500	<0.00500	<0.00500	<0.00500	<0.00500	<0.00500	<0.00500	<0.00500	<0.00500
BH03@6'	11/30/23	6	<0.00500	<0.00500	<0.00500	<0.00500	<0.00500	<0.00500	<0.00500	<0.00500	<0.00500	<0.00500	<0.00500	<0.00500	<0.00500	<0.00500
BH03@8'	11/30/23	8	<0.00500	<0.00500	<0.00500	<0.00500	<0.00500	<0.00500	<0.00500	<0.00500	<0.00500	<0.00500	<0.00500	<0.00500	<0.00500	<0.00500
BH03@12'	11/30/23	12	<0.00500	<0.00500	<0.00500	<0.00500	<0.00500	<0.00500	<0.00500	<0.00500	<0.00500	<0.00500	<0.00500	<0.00500	<0.00500	<0.00500
BH04@2.5'	11/30/23	2.5	<0.00500	<0.00500	<0.00500	<0.00500	<0.00500	<0.00500	<0.00500	<0.00500	<0.00500	<0.00500	<0.00500	<0.00500	<0.00500	<0.00500
BH04@6'	11/30/23	6	<0.00500	<0.00500	<0.00500	<0.00500	<0.00500	<0.00500	<0.00500	<0.00500	<0.00500	<0.00500	<0.00500	<0.00500	<0.00500	<0.00500
BH04@8'	11/30/23	8	<0.00500	<0.00500	<0.00500	<0.00500	<0.00500	<0.00500	<0.00500	<0.00500	<0.00500	<0.00500	<0.00500	<0.00500	<0.00500	<0.00500
BH04@12'	11/30/23	12	<0.00500	<0.00500	<0.00500	<0.00500	<0.00500	<0.00500	<0.00500	<0.00500	<0.00500	<0.00500	<0.00500	<0.00500	<0.00500	<0.00500
BH05@2.5'	11/30/23	2.5	<0.00500	<0.00500	<0.00500	<0.00500	<0.00500	<0.00500	<0.00500	<0.00500	<0.00500	<0.00500	<0.00500	<0.00500	<0.00500	<0.00500
BH05@6'	11/30/23	6	<0.00500	<0.00500	<0.00500	<0.00500	<0.00500	<0.00500	<0.00500	<0.00500	<0.00500	<0.00500	<0.00500	<0.00500	<0.00500	<0.00500
BH05@8'	11/30/23	8	<0.00500	<0.00500	<0.00500	<0.00500	<0.00500	<0.00500	<0.00500	<0.00500	<0.00500	<0.00500	<0.00500	<0.00500	<0.00500	<0.00500
BH05@12'	11/30/23	12	<0.00500	<0.00500	<0.00500	<0.00500	<0.00500	<0.00500	<0.00500	<0.00500	<0.00500	<0.00500	<0.00500	<0.00500	<0.00500	<0.00500
SB01@2.5'	12/03/2024	2.5	<0.00500	<0.00500	<0.00500	<0.00500	<0.00500	<0.00500	<0.00500	<0.00500	<0.00500	<0.00500	<0.00500	<0.00500	<0.00500	<0.00500
SB01@6'	12/03/2024	6	<0.00500	<0.00500	<0.00500	<0.00500	<0.00500	<0.00500	<0.00500	<0.00500	<0.00500	<0.00500	<0.00500	<0.00500	<0.00500	<0.00500
SB01@13'	12/03/2024	13	<0.00500	<0.00500	<0.00500	<0.00500	<0.00500	<0.00500	<0.00500	<0.00500	<0.00500	<0.00500	<0.00500	<0.00500	<0.00500	<0.00500
SB01@14'	12/03/2024	14	<0.00500	<0.00500	<0.00500	<0.00500	<0.00500	<0.00500	<0.00500	<0.00500	<0.00500	<0.00500	<0.00500	<0.00500	<0.00500	<0.00500
SB02@2.5'	12/03/2024	2.5	<0.00500	<0.00500	<0.00500	<0.00500	<0.00500	<0.00500	<0.00500	<0.00500	<0.00500	<0.00500	<0.00500	<0.00500	<0.00500	<0.00500
SB02@6'	12/03/2024	6	<0.00500	<0.00500	<0.00500	<0.00500	<0.00500	<0.00500	<0.00500	<0.00500	<0.00500	<0.00500	<0.00500	<0.00500	<0.00500	<0.00500
SB02@13'	12/03/2024	13	<0.00500	<0.00500	<0.00500	<0.00500	<0.00500	<0.00500	<0.00500	<0.00500	<0.00500	<0.00500	<0.00500	<0.00500	<0.00500	<0.00500
SB02@14'	12/03/2024	14	<0.00500	<0.00500	<0.00500	<0.00500	<0.00500	<0.00500	<0.00500	<0.00500	<0.00500	<0.00500	<0.00500	<0.00500	<0.00500	<0.00500
SB03@2.5'	12/03/2024	2.5	<0.00500	<0.00500	<0.00500	<0.00500	<0.00500	<0.00500	<0.00500	<0.00500	<0.00500	<0.00500	<0.00500	<0.00500	<0.00500	<0.00500

TABLE 3
SUMMARY OF POLYCYCLIC AROMATIC HYDROCARBON SOIL CHEMISTRY DATA
NOBLE ENERGY, INC. 100322
FORMER MATSUSHIMA-PMK 2-1 TANK BATTERY, WELD COUNTY, COLORADO
REM # 29940

Sample ID	Sample Date	Depth (ft. bgs)	Acenaphthene (mg/kg)	Anthracene (mg/kg)	Benzo (a) Anthracene (mg/kg)	Benzo (a) Pyrene (mg/kg)	Benzo (b) Fluoranthene (mg/kg)	Benzo (k) Fluoranthene (mg/kg)	Chrysene (mg/kg)	Dibenzo (a,h) Anthracene (mg/kg)	Fluoranthene (mg/kg)	Fluorene (mg/kg)	Indeno (1,2,3- cd) Pyrene (mg/kg)	Pyrene (mg/kg)	1-Methyl - Naphthalene (mg/kg)	2-Methyl- Naphthalene (mg/kg)
ECMC Table 915-1 Limits (Residential SSL)			360	1,800	1.1	0.11	1.1	11	110	0.11	240	240	1.1	180	18	24
ECMC Table 915-1 Limits (Protection of Groundwater SSL)			0.55	5.8	0.011	0.24	0.3	2.9	9	0.096	8.9	0.54	0.98	1.3	0.006	0.019
SB03@6'	12/03/2024	6	<0.00500	<0.00500	<0.00500	<0.00500	<0.00500	<0.00500	<0.00500	<0.00500	<0.00500	<0.00500	<0.00500	<0.00500	<0.00500	<0.00500
SB03@13'	12/03/2024	13	<0.00500	<0.00500	<0.00500	<0.00500	<0.00500	<0.00500	<0.00500	<0.00500	<0.00500	<0.00500	<0.00500	<0.00500	<0.00500	<0.00500
SB03@14'	12/03/2024	14	<0.00500	<0.00500	<0.00500	<0.00500	<0.00500	<0.00500	<0.00500	<0.00500	<0.00500	<0.00500	<0.00500	<0.00500	0.00919	0.0152
SB04@2.5'	12/03/2024	2.5	<0.00500	<0.00500	<0.00500	<0.00500	<0.00500	<0.00500	<0.00500	<0.00500	<0.00500	<0.00500	<0.00500	<0.00500	<0.00500	<0.00500
SB04@6'	12/03/2024	6	<0.00500	<0.00500	<0.00500	<0.00500	<0.00500	<0.00500	<0.00500	<0.00500	<0.00500	<0.00500	<0.00500	<0.00500	<0.00500	<0.00500
SB04@13'	12/03/2024	13	<0.00500	<0.00500	<0.00500	<0.00500	<0.00500	<0.00500	<0.00500	<0.00500	<0.00500	<0.00500	<0.00500	<0.00500	<0.00500	<0.00500
SB04@14'	12/03/2024	14	<0.00500	<0.00500	<0.00500	<0.00500	<0.00500	<0.00500	<0.00500	<0.00500	<0.00500	<0.00500	<0.00500	<0.00500	<0.00500	<0.00500
SB05@2.5'	12/03/2024	2.5	<0.00500	<0.00500	<0.00500	0.00501	<0.00500	<0.00500	<0.00500	<0.00500	<0.00500	<0.00500	<0.00500	0.00559	<0.00500	<0.00500
SB05@6'	12/03/2024	6	<0.00500	<0.00500	<0.00500	<0.00500	<0.00500	<0.00500	<0.00500	<0.00500	<0.00500	<0.00500	<0.00500	<0.00500	<0.00500	<0.00500
SB05@13'	12/03/2024	13	<0.00500	<0.00500	<0.00500	<0.00500	<0.00500	<0.00500	<0.00500	<0.00500	<0.00500	<0.00500	<0.00500	<0.00500	<0.00500	<0.00500
SB05@14'	12/03/2024	14	<0.00500	<0.00500	<0.00500	<0.00500	<0.00500	<0.00500	<0.00500	<0.00500	<0.00500	<0.00500	<0.00500	<0.00500	<0.00500	<0.00500
SB06@2.5'	12/03/2024	2.5	<0.00500	<0.00500	<0.00500	<0.00500	<0.00500	<0.00500	<0.00500	<0.00500	<0.00500	<0.00500	<0.00500	<0.00500	<0.00500	<0.00500
SB06@6'	12/03/2024	6	<0.00500	<0.00500	<0.00500	<0.00500	<0.00500	<0.00500	<0.00500	<0.00500	<0.00500	<0.00500	<0.00500	<0.00500	<0.00500	<0.00500
SB06@13'	12/03/2024	13	<0.00500	<0.00500	<0.00500	<0.00500	<0.00500	<0.00500	<0.00500	<0.00500	<0.00500	<0.00500	<0.00500	<0.00500	<0.00500	<0.00500
SB06@14'	12/03/2024	14	<0.00500	<0.00500	<0.00500	<0.00500	<0.00500	<0.00500	<0.00500	<0.00500	<0.00500	<0.00500	<0.00500	<0.00500	<0.00500	<0.00500

Notes:

1. **Bold** values exceed the ECMC Table 915-1 limit(s).
 2. Pink & blue highlighted soil analytical values indicate an exceedance of the referenced soil screening level (SSL).
 3. * Indicates laboratory minimum detection limit in excess of SSL.
- ECMC = Colorado Energy & Carbon Management Commission
(<) = Analytical result is less than the indicated laboratory reporting limit.
ft. = Feet
bgs = Below ground surface
mg/kg = Milligrams per kilogram

TABLE 4
SUMMARY OF SOIL SUITABILITY FOR RECLAMATION
NOBLE ENERGY, INC. 100322
FORMER MATSUSHIMA-PMK 2-1 TANK BATTERY, WELD COUNTY, COLORADO
REM # 29940

Sample ID	Sample Date	Depth (ft. bgs)	pH (Standard Units)	EC (mmhos/cm)	SAR (Standard Units)	Boron (mg/L)
ECMC Table 915-1 Soil Suitability Limits			6 - 8.3	<4	<6	2
AST01@0.5'	10/06/23	0.5	7.88	0.127	0.0534	<2.00
FS01@5'	10/06/23	5	7.98	0.421	0.736	<2.00
SEP01-DL@3'	10/06/23	3	8.06	0.202	0.275	<2.00
SS01@2.5'	10/06/23	2.5	7.85	0.186	0.285	<2.00
SS02@2.5'	10/06/23	2.5	7.81	0.161	0.417	<2.00
SS03@2.5'	10/06/23	2.5	8.51	0.217	0.654	<2.00
SS04@2.5'	10/06/23	2.5	8.54	0.234	1.09	<2.00
BH01@2.5'	11/30/23	2.5	8.39	0.282	1.36	<2.00
BH01@6'	11/30/23	6	8.37	0.279	0.806	<2.00
BH01@8'	11/30/23	8	7.54	0.188	0.865	<2.00
BH01@13'	11/30/23	13	8.49	0.261	1.40	<2.00
BH02@2.5'	11/30/23	2.5	8.88	0.197	0.517	<2.00
BH02@6'	11/30/23	6	7.64	0.394	2.12	<2.00
BH02@8'	11/30/23	8	7.76	0.274	0.686	<2.00
BH02@13'	11/30/23	13	8.74	0.124	0.499	<2.00
BH03@2.5'	11/30/23	2.5	8.66	0.143	0.0927	<2.00
BH03@6'	11/30/23	6	7.76	0.161	1.03	<2.00
BH03@8'	11/30/23	8	7.45	0.405	1.05	<2.00
BH03@12'	11/30/23	12	8.53	0.274	1.02	<2.00
BH04@2.5'	11/30/23	2.5	8.14	0.563	2.76	<2.00
BH04@6'	11/30/23	6	7.99	0.173	0.534	<2.00
BH04@8'	11/30/23	8	8.14	0.220	0.897	<2.00

TABLE 4
SUMMARY OF SOIL SUITABILITY FOR RECLAMATION
NOBLE ENERGY, INC. 100322
FORMER MATSUSHIMA-PMK 2-1 TANK BATTERY, WELD COUNTY, COLORADO
REM # 29940

Sample ID	Sample Date	Depth (ft. bgs)	pH (Standard Units)	EC (mmhos/cm)	SAR (Standard Units)	Boron (mg/L)
ECMC Table 915-1 Soil Suitability Limits			6 - 8.3	<4	<6	2
BH04@12'	11/30/23	12	8.60	0.182	1.56	<2.00
BH05@2.5'	11/30/23	2.5	8.10	0.165	0.762	<2.00
BH05@6'	11/30/23	6	7.96	0.175	0.610	<2.00
BH05@8'	11/30/23	8	8.19	0.230	1.01	<2.00
BH05@12'	11/30/23	12	8.01	0.215	1.35	<2.00
SB01@2.5'	12/03/2024	2.5	8.54	0.227	0.532	<2.00
SB01@6'	12/03/2024	6	8.06	0.154	0.489	<2.00
SB01@13'	12/03/2024	13	7.89	0.100	0.776	<2.00
SB01@14'	12/03/2024	14	7.47	0.387	1.56	<2.00
SB02@2.5'	12/03/2024	2.5	8.49	0.222	0.317	<2.00
SB02@6'	12/03/2024	6	7.91	0.249	0.619	<2.00
SB02@13'	12/03/2024	13	7.95	0.217	0.952	<2.00
SB02@14'	12/03/2024	14	8.21	0.236	1.35	<2.00
SB03@2.5'	12/03/2024	2.5	8.68	0.210	0.347	<2.00
SB03@6'	12/03/2024	6	7.90	0.292	1.01	<2.00
SB03@13'	12/03/2024	13	7.83	0.222	1.35	<2.00
SB03@14'	12/03/2024	14	8.30	0.313	1.47	<2.00
SB04@2.5'	12/03/2024	2.5	8.64	0.208	0.622	<2.00
SB04@6'	12/03/2024	6	8.28	0.451	1.04	<2.00
SB04@13'	12/03/2024	13	7.99	0.176	1.24	<2.00
SB04@14'	12/03/2024	14	7.94	0.178	1.20	<2.00
SB05@2.5'	12/03/2024	2.5	8.11	1.30	1.73	<2.00

TABLE 4
SUMMARY OF SOIL SUITABILITY FOR RECLAMATION
NOBLE ENERGY, INC. 100322
FORMER MATSUSHIMA-PMK 2-1 TANK BATTERY, WELD COUNTY, COLORADO
REM # 29940

Sample ID	Sample Date	Depth (ft. bgs)	pH (Standard Units)	EC (mmhos/cm)	SAR (Standard Units)	Boron (mg/L)
ECMC Table 915-1 Soil Suitability Limits			6 - 8.3	<4	<6	2
SB05@6'	12/03/2024	6	7.83	0.226	0.652	<2.00
SB05@13'	12/03/2024	13	7.64	0.32	0.754	<2.00
SB05@14'	12/03/2024	14	8.04	0.298	1.23	<2.00
SB06@2.5'	12/03/2024	2.5	8.04	0.680	2.97	<2.00
SB06@6'	12/03/2024	6	8.52	0.231	1.07	<2.00
SB06@13'	12/03/2024	13	7.64	0.143	1.15	<2.00
SB06@14'	12/03/2024	14	7.46	0.131	1.21	<2.00
BG01@2.5'	11/30/23	2.5	7.66	0.580	1.64	<2.00
BG01@6'	11/30/23	6	7.68	0.256	0.484	<2.00
BG01@8'	11/30/23	8	7.98	0.258	1.19	<2.00
BG01@13'	11/30/23	13	8.10	0.241	1.19	<2.00
BG02@2.5'	11/30/23	2.5	7.43	0.926	7.18	<2.00
BG02@6'	11/30/23	6	7.85	0.277	0.584	<2.00
BG02@8'	11/30/23	8	8.04	0.285	0.835	<2.00
BG02@13'	11/30/23	13	8.07	0.222	1.06	<2.00
BG03@2.5'	11/30/23	2.5	7.52	2.53	4.63	<2.00
BG03@6'	11/30/23	6	7.84	0.323	2.07	<2.00
BG03@8'	11/30/23	8	7.85	0.371	1.32	<2.00
BG03@13'	11/30/23	13	7.91	0.398	1.63	<2.00
BG04@2.5'	11/30/23	2.5	7.78	1.11	5.76	<2.00
BG04@6'	11/30/23	6	7.59	0.363	1.08	<2.00
BG04@8'	11/30/23	8	7.76	0.388	1.44	<2.00

TABLE 4
SUMMARY OF SOIL SUITABILITY FOR RECLAMATION
NOBLE ENERGY, INC. 100322
FORMER MATSUSHIMA-PMK 2-1 TANK BATTERY, WELD COUNTY, COLORADO
REM # 29940

Sample ID	Sample Date	Depth (ft. bgs)	pH (Standard Units)	EC (mmhos/cm)	SAR (Standard Units)	Boron (mg/L)
ECMC Table 915-1 Soil Suitability Limits			6 - 8.3	<4	<6	2
BG04@13'	11/30/23	13	7.86	0.301	1.10	<2.00
BG05@2.5'	11/30/23	2.5	7.73	0.285	1.36	<2.00
BG05@6'	11/30/23	6	7.88	0.292	1.62	<2.00
BG05@8'	11/30/23	8	7.90	0.235	1.60	<2.00
BG05@13'	11/30/23	13	7.99	0.112	0.872	<2.00
BKG06@2.5'	12/03/2024	2.5	8.56	0.193	0.951	<2.00
BKG06@4'	12/03/2024	4	8.52	0.139	0.456	<2.00
BKG06@6'	12/03/2024	6	8.07	0.238	1.50	<2.00
BKG06@14'	12/03/2024	14	8.03	0.0565	0.782	<2.00
BKG07@2.5'	12/03/2024	2.5	8.05	1.92	2.99	<2.00
BKG07@4'	12/03/2024	4	8.28	0.140	0.732	<2.00
BKG07@6'	12/03/2024	6	7.92	0.202	1.29	<2.00
BKG07@14'	12/03/2024	14	8.01	0.161	1.07	<2.00
BKG08@2.5'	12/03/2024	2.5	8.80	0.721	5.57	<2.00
BKG08@4'	12/03/2024	4	8.27	0.107	0.534	<2.00
BKG08@6'	12/03/2024	6	7.81	0.152	1.17	<2.00
BKG08@14'	12/03/2024	14	8.18	0.411	1.83	<2.00
BKG09@2.5'	12/03/2024	2.5	7.93	5.12	9.62	<2.00
BKG09@4'	12/03/2024	4	7.87	0.259	0.727	<2.00
BKG09@6'	12/03/2024	6	7.84	0.201	0.649	<2.00
BKG09@14'	12/03/2024	14	7.64	0.228	1.49	<2.00
Maximum Background Concentration			8.80	-	-	-

TABLE 4
SUMMARY OF SOIL SUITABILITY FOR RECLAMATION
NOBLE ENERGY, INC. 100322
FORMER MATSUSHIMA-PMK 2-1 TANK BATTERY, WELD COUNTY, COLORADO
REM # 29940

Sample ID	Sample Date	Depth (ft. bgs)	pH (Standard Units)	EC (mmhos/cm)	SAR (Standard Units)	Boron (mg/L)
ECMC Table 915-1 Soil Suitability Limits			6 - 8.3	<4	<6	2

Notes:

1. **Bold** faced values exceed the ECMC Table 915-1 limit(s), but are within background concentrations.
2. **Bold** faced values exceed the ECMC Table 915-1 limit(s) and native background concentrations.
3. Brown highlighted soil analytical values indicate a regulatory exceedance.

ECMC = Colorado Energy & Carbon Management Commission

EC = Electrical conductivity

SAR = Sodium adsorption ratio

mmhos/cm = millimhos per centimeter

mg/L = milligram per liter

(<) = Analytical result is less than the indicated laboratory reporting limit.

ft. = Feet

bgs = Below ground surface

TABLE 5
SUMMARY OF METALS IN SOIL CHEMISTRY DATA
NOBLE ENERGY, INC. 100322
FORMER MATSUSHIMA-PMK 2-1 TANK BATTERY, WELD COUNTY, COLORADO
REM # 29940

Sample ID	Sample Date	Depth (ft. bgs)	Arsenic (mg/kg)	Barium (mg/kg)	Cadmium (mg/kg)	Chromium (VI) ^[4] (mg/kg)	Copper (mg/kg)	Lead (mg/kg)	Nickel (mg/kg)	Selenium (mg/kg)	Silver (mg/kg)	Zinc (mg/kg)
ECMC Table 915-1 Limits (Residential SSL)			0.68	15,000	71	0.3	3,100	400	1,500	390	390	23,000
ECMC Table 915-1 Limits (Protection of Groundwater SSL)			0.29	82	0.38	0.00067	46	14	26	0.26	0.8	370
AST01@0.5'	10/06/23	0.5	1.43	203	0.571	<0.30	5.95	27.2	2.82	0.279	0.271	27.2
FS01@5'	10/06/23	5	0.368	52.9	<0.200	<0.30	0.922	3.63	1.00	<0.260	<0.0200	5.40
SEP01-DL@3'	10/06/23	3	1.34	208	0.414	<0.30	4.80	18.1	2.50	0.330	0.275	18.5
SS01@2.5'	10/06/23	2.5	1.20	179	0.403	<0.30	3.91	18.9	2.34	0.289	0.187	15.5
SS02@2.5'	10/06/23	2.5	3.19	172	0.351	<0.30	7.93	11.0	6.15	<0.260	0.0582	28.6
SS03@2.5'	10/06/23	2.5	3.5	125	0.371	<0.30	9.90	16.1	5.28	<0.260	0.147	36.8
SS04@2.5'	10/06/23	2.5	3.95	114	0.330	<0.30	8.77	12.2	6.53	0.284	0.0625	27.2
BH01@2.5'	11/30/23	2.5	0.510	163	0.201	NA	NA	10.5	NA	0.562	NA	NA
BH01@6'	11/30/23	6	0.676	141	<0.200	NA	NA	9.07	NA	<0.260	NA	NA
BH01@8'	11/30/23	8	0.464	163	<0.200	NA	NA	9.22	NA	0.393	NA	NA
BH01@13'	11/30/23	13	<0.200	3.97	<0.200	NA	NA	0.795	NA	<0.260	NA	NA
BH02@2.5'	11/30/23	2.5	0.614	108	<0.200	NA	NA	9.40	NA	<0.260	NA	NA
BH02@6'	11/30/23	6	0.693	209	<0.200	NA	NA	16.4	NA	0.655	NA	NA
BH02@8'	11/30/23	8	0.263	93.4	<0.200	NA	NA	8.48	NA	<0.260	NA	NA
BH02@13'	11/30/23	13	0.445	12.5	<0.200	NA	NA	1.63	NA	<0.260	NA	NA
BH03@2.5'	11/30/23	2.5	0.822	193	0.358	NA	NA	17.1	NA	<0.260	NA	NA
BH03@6'	11/30/23	6	0.628	325	0.289	NA	NA	16.0	NA	0.819	NA	NA
BH03@8'	11/30/23	8	0.334	34.5	<0.200	NA	NA	2.75	NA	<0.260	NA	NA
BH03@12'	11/30/23	12	0.539	15.1	<0.200	NA	NA	3.88	NA	<0.260	NA	NA
BH04@2.5'	11/30/23	2.5	0.570	204	<0.200	NA	NA	10.5	NA	<0.260	NA	NA
BH04@6'	11/30/23	6	0.328	67.8	<0.200	NA	NA	4.68	NA	<0.260	NA	NA
BH04@8'	11/30/23	8	0.336	8.41	<0.200	NA	NA	1.12	NA	<0.260	NA	NA
BH04@12'	11/30/23	12	<0.200	5.08	<0.200	NA	NA	0.721	NA	<0.260	NA	NA
BH05@2.5'	11/30/23	2.5	0.600	99.1	<0.200	NA	NA	7.41	NA	<0.260	NA	NA
BH05@6'	11/30/23	6	0.333	30.8	<0.200	NA	NA	2.57	NA	0.299	NA	NA
BH05@8'	11/30/23	8	0.455	11.3	<0.200	NA	NA	1.35	NA	<0.260	NA	NA
BH05@12'	11/30/23	12	<0.200	5.20	<0.200	NA	NA	1.00	NA	<0.260	NA	NA
BH06@4-5'	04/18/2024	4-5	NA	NA	NA	NA	NA	2.33	NA	NA	NA	NA

TABLE 5
SUMMARY OF METALS IN SOIL CHEMISTRY DATA
NOBLE ENERGY, INC. 100322
FORMER MATSUSHIMA-PMK 2-1 TANK BATTERY, WELD COUNTY, COLORADO
REM # 29940

Sample ID	Sample Date	Depth (ft. bgs)	Arsenic (mg/kg)	Barium (mg/kg)	Cadmium (mg/kg)	Chromium (VI) ^[4] (mg/kg)	Copper (mg/kg)	Lead (mg/kg)	Nickel (mg/kg)	Selenium (mg/kg)	Silver (mg/kg)	Zinc (mg/kg)
ECMC Table 915-1 Limits (Residential SSL)			0.68	15,000	71	0.3	3,100	400	1,500	390	390	23,000
ECMC Table 915-1 Limits (Protection of Groundwater SSL)			0.29	82	0.38	0.00067	46	14	26	0.26	0.8	370
SB01@2.5'	12/03/2024	2.5	5.12	184	0.760	<0.30	14.3	26.3	6.55	0.265	0.282	54.3
SB01@6'	12/03/2024	6	1.57	80.8	<0.200	<0.30	3.94	7.15	3.62	<0.260	0.0378	18.5
SB01@13'	12/03/2024	13	0.411	8.58	<0.200	<0.30	0.960	1.09	0.720	<0.260	<0.0200	4.17
SB01@14'	12/03/2024	14	3.21	128	0.463	<0.30	7.08	9.85	7.08	1.72	0.0711	37.0
SB02@2.5'	12/03/2024	2.5	4.38	168	0.567	<0.30	11.9	22.0	6.10	<0.260	0.222	47.3
SB02@6'	12/03/2024	6	1.26	79.9	<0.200	<0.30	3.88	6.65	4.04	0.322	0.0361	18.2
SB02@13'	12/03/2024	13	0.320	8.32	<0.200	<0.30	1.01	1.08	0.999	<0.260	<0.0200	5.00
SB02@14'	12/03/2024	14	<0.200	3.47	<0.200	<0.30	0.528	0.631	0.580	<0.260	<0.0200	2.40
SB03@2.5'	12/03/2024	2.5	4.58	162	0.474	<0.30	12.1	19.8	6.14	<0.260	0.186	46.8
SB03@6'	12/03/2024	6	1.73	119	0.241	<0.30	6.79	8.80	6.19	0.531	0.0394	28.0
SB03@13'	12/03/2024	13	0.38	4.67	<0.200	<0.30	0.923	0.956	0.893	<0.260	<0.0200	4.77
SB03@14'	12/03/2024	14	0.257	5.29	<0.200	<0.30	0.894	0.937	0.769	<0.260	<0.0200	3.44
SB04@2.5'	12/03/2024	2.5	2.13	144	0.237	<0.30	7.59	10.5	5.17	<0.260	0.0706	29.9
SB04@6'	12/03/2024	6	1.20	126	<0.200	<0.30	4.88	9.05	4.62	<0.260	0.0402	24.1
SB04@13'	12/03/2024	13	<0.200	5.57	<0.200	<0.30	0.665	0.817	0.691	<0.260	<0.0200	3.31
SB04@14'	12/03/2024	14	0.522	5.32	<0.200	<0.30	0.954	1.10	1.09	<0.260	<0.0200	4.16
SB05@2.5'	12/03/2024	2.5	4.08	130	0.521	<0.30	15.4	23.0	5.41	<0.260	0.274	49.3
SB05@6'	12/03/2024	6	3.20	81.5	0.373	<0.30	12.5	13.9	7.84	0.385	0.0800	33.8
SB05@13'	12/03/2024	13	0.836	44.6	<0.200	<0.30	3.04	3.07	2.95	0.460	<0.0200	14.4
SB05@14'	12/03/2024	14	0.499	17.4	<0.200	<0.30	2.04	2.20	2.44	<0.260	<0.0200	10.0
SB06@2.5'	12/03/2024	2.5	3.44	231	0.355	<0.30	8.44	10.0	7.20	0.262	0.0608	29.8
SB06@6'	12/03/2024	6	0.482	7.43	<0.200	<0.30	0.932	1.18	1.11	<0.260	<0.0200	5.41
SB06@13'	12/03/2024	13	<0.200	2.61	<0.200	<0.30	0.711	0.771	0.598	<0.260	<0.0200	2.64
SB06@14'	12/03/2024	14	0.316	3.47	<0.200	<0.30	1.82	1.25	1.64	<0.260	<0.0200	5.42
BG01@2.5'	11/30/23	2.5	0.472	131	<0.200	NA	NA	7.10	NA	<0.260	NA	NA
BG01@6'	11/30/23	6	1.08	73.4	<0.200	NA	NA	5.75	NA	0.272	NA	NA
BG01@8'	11/30/23	8	0.239	8.39	<0.200	NA	NA	1.34	NA	<0.260	NA	NA
BG01@13'	11/30/23	13	0.230	8.77	<0.200	NA	NA	1.46	NA	<0.260	NA	NA

TABLE 5
SUMMARY OF METALS IN SOIL CHEMISTRY DATA
NOBLE ENERGY, INC. 100322
FORMER MATSUSHIMA-PMK 2-1 TANK BATTERY, WELD COUNTY, COLORADO
REM # 29940

Sample ID	Sample Date	Depth (ft. bgs)	Arsenic (mg/kg)	Barium (mg/kg)	Cadmium (mg/kg)	Chromium (VI) ^[4] (mg/kg)	Copper (mg/kg)	Lead (mg/kg)	Nickel (mg/kg)	Selenium (mg/kg)	Silver (mg/kg)	Zinc (mg/kg)
ECMC Table 915-1 Limits (Residential SSL)			0.68	15,000	71	0.3	3,100	400	1,500	390	390	23,000
ECMC Table 915-1 Limits (Protection of Groundwater SSL)			0.29	82	0.38	0.00067	46	14	26	0.26	0.8	370
BG02@2.5'	11/30/23	2.5	0.909	257	<0.200	NA	NA	12.9	NA	0.460	NA	NA
BG02@6'	11/30/23	6	0.480	65.7	<0.200	NA	NA	5.15	NA	<0.260	NA	NA
BG02@8'	11/30/23	8	0.271	7.78	<0.200	NA	NA	1.25	NA	<0.260	NA	NA
BG02@13'	11/30/23	13	<0.200	5.40	<0.200	NA	NA	1.14	NA	<0.260	NA	NA
BG03@2.5'	11/30/23	2.5	0.986	223	0.577	NA	NA	25.4	NA	0.383	NA	NA
BG03@6'	11/30/23	6	0.446	162	<0.200	NA	NA	9.67	NA	<0.260	NA	NA
BG03@8'	11/30/23	8	0.373	69.1	<0.200	NA	NA	3.87	NA	<0.260	NA	NA
BG03@13'	11/30/23	13	0.222	6.66	<0.200	NA	NA	1.37	NA	<0.260	NA	NA
BG04@2.5'	11/30/23	2.5	0.868	169	<0.200	NA	NA	10.7	NA	<0.260	NA	NA
BG04@6'	11/30/23	6	0.494	247	<0.200	NA	NA	11.4	NA	0.323	NA	NA
BG04@8'	11/30/23	8	0.309	26.2	<0.200	NA	NA	2.14	NA	<0.260	NA	NA
BG04@13'	11/30/23	13	<0.200	7.99	<0.200	NA	NA	1.08	NA	<0.260	NA	NA
BG05@2.5'	11/30/23	2.5	0.207	29.2	<0.200	NA	NA	2.72	NA	<0.260	NA	NA
BG05@6'	11/30/23	6	0.228	5.78	<0.200	NA	NA	1.63	NA	<0.260	NA	NA
BG05@8'	11/30/23	8	<0.200	5.75	<0.200	NA	NA	1.02	NA	<0.260	NA	NA
BG05@13'	11/30/23	13	<0.200	6.82	<0.200	NA	NA	1.02	NA	<0.260	NA	NA
BG06@2-3'	04/18/2024	2-3	4.05	NA	NA	NA	NA	1.77	NA	NA	NA	NA
BG06@4-5'	04/18/2024	4-5	1.00	NA	NA	NA	NA	1.76	NA	NA	NA	NA
BG07@2-3'	04/18/2024	2-3	3.34	NA	NA	NA	NA	23.1	NA	NA	NA	NA
BG07@4-5'	04/18/2024	4-5	1.17	NA	NA	NA	NA	1.77	NA	NA	NA	NA
BG08@2-3'	04/18/2024	2-3	2.73	NA	NA	NA	NA	12.5	NA	NA	NA	NA
BG08@4-5'	04/18/2024	4-5	2.11	NA	NA	NA	NA	12.3	NA	NA	NA	NA
BG09@2-3'	04/18/2024	2-3	1.01	NA	NA	NA	NA	1.67	NA	NA	NA	NA
BG09@4-5'	04/18/2024	4-5	0.574	NA	NA	NA	NA	1.44	NA	NA	NA	NA
BG10@2-3'	04/18/2024	2-3	1.63	NA	NA	NA	NA	1.97	NA	NA	NA	NA
BG10@4-5'	04/18/2024	4-5	0.652	NA	NA	NA	NA	3.30	NA	NA	NA	NA
BKG06@2.5'	12/03/2024	2.5	0.927	21.5	<0.200	<0.30	2.53	3.37	2.24	<0.260	0.0208	11.9
BKG06@4'	12/03/2024	4	0.570	13.0	<0.200	<0.30	1.57	2.00	1.14	<0.260	<0.0200	6.09

TABLE 5
SUMMARY OF METALS IN SOIL CHEMISTRY DATA
NOBLE ENERGY, INC. 100322
FORMER MATSUSHIMA-PMK 2-1 TANK BATTERY, WELD COUNTY, COLORADO
REM # 29940

Sample ID	Sample Date	Depth (ft. bgs)	Arsenic (mg/kg)	Barium (mg/kg)	Cadmium (mg/kg)	Chromium (VI) ^[4] (mg/kg)	Copper (mg/kg)	Lead (mg/kg)	Nickel (mg/kg)	Selenium (mg/kg)	Silver (mg/kg)	Zinc (mg/kg)
ECMC Table 915-1 Limits (Residential SSL)			0.68	15,000	71	0.3	3,100	400	1,500	390	390	23,000
ECMC Table 915-1 Limits (Protection of Groundwater SSL)			0.29	82	0.38	0.00067	46	14	26	0.26	0.8	370
BKG06@6'	12/03/2024	6	0.248	6.38	<0.200	<0.30	1.17	0.786	1.97	<0.260	<0.0200	4.58
BKG06@14'	12/03/2024	14	0.398	3.93	<0.200	<0.30	0.787	0.909	0.709	<0.260	<0.0200	3.70
BKG07@2.5'	12/03/2024	2.5	3.26	90.4	0.298	<0.30	9.11	13.9	4.68	<0.260	0.136	31.5
BKG07@4'	12/03/2024	4	0.921	8.54	<0.200	<0.30	1.09	1.36	0.925	<0.260	<0.0200	5.18
BKG07@6'	12/03/2024	6	0.905	9.33	<0.200	<0.30	1.55	1.28	1.12	<0.260	<0.0200	5.69
BKG07@14'	12/03/2024	14	0.206	3.81	<0.200	<0.30	0.902	0.955	0.685	<0.260	<0.0200	4.27
BKG08@2.5'	12/03/2024	2.5	1.50	36.6	<0.200	<0.30	4.35	4.65	3.05	<0.260	0.0286	17.0
BKG08@4'	12/03/2024	4	1.96	16.2	<0.200	<0.30	1.21	2.55	1.68	<0.260	<0.0200	7.25
BKG08@6'	12/03/2024	6	0.314	6.30	<0.200	<0.30	0.880	1.07	0.917	<0.260	<0.0200	4.40
BKG08@14'	12/03/2024	14	0.294	4.94	<0.200	<0.30	1.11	1.10	0.961	<0.260	<0.0200	4.11
BKG09@2.5'	12/03/2024	2.5	3.83	166	0.326	<0.30	9.83	13.2	6.79	<0.260	0.0912	31.3
BKG09@4'	12/03/2024	4	2.19	151	0.254	<0.30	8.47	13.0	6.79	<0.260	0.0647	35.0
BKG09@6'	12/03/2024	6	1.17	95.8	<0.200	<0.30	6.77	7.90	4.27	0.285	0.0468	24.7
BKG09@14'	12/03/2024	14	0.334	8.33	<0.200	<0.30	1.33	2.19	1.05	<0.260	<0.0200	6.65
Maximum Background Concentration X 1.25			5.06	321	0.721	-	-	31.8	-	0.575	-	-

Notes:

1. **Bold** faced values exceed the ECMC Table 915-1 limit(s), but are within 1.25x background concentrations.
2. **Red** faced values exceed the ECMC Table 915-1 limit(s) and native background concentrations.
3. Red & blue highlighted soil analytical values indicate an exceedance of the referenced soil screening level (SSL).
4. Compound falls within ECMC Table 915-1 Footnote 9.
5. Non-detect background results accounted for in the highest background concentration by using the reporting limit.

ECMC = Energy & Carbon Management Commission

(<) = Analytical result is less than the indicated laboratory reporting limit.

mg/kg = Milligrams per kilogram

ft. = Feet

bgs = Below ground surface

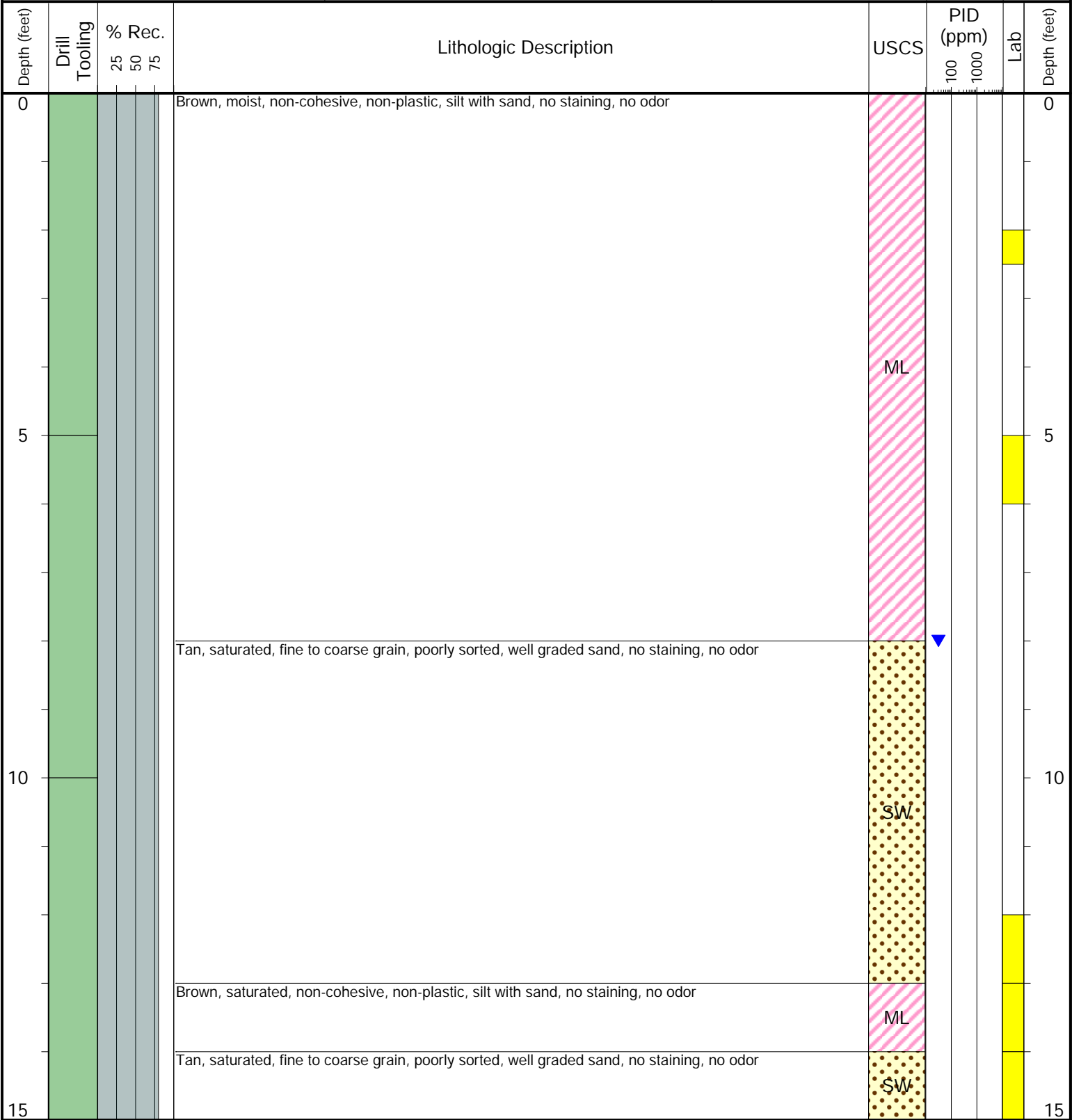
* Indicates laboratory minimum detection limit in excess of SSL

NA = Constituent not analyzed



6855 W. 119th Ave.
Broomfield, CO 80020

CLIENT: Noble	Matsushiima PMK 2-01
LOGGED BY: Tanner Lacy, Matthew Bush	
PROJECT MANAGER: Bryce Goldade	BORING / WELL ID: SB01
DRILLING CONTRACTOR: Tasman	
DRILLING EQUIPMENT: Geoprobe	LOCATION: E of SS01
DRILL BIT SIZE (INCHES): 3.25	LATITUDE (NAD 83): 40.3471913
DATE STARTED - COMPLETED: 12/3/2024-12/3/2024	LONGITUDE (NAD 83): -104.737297
TOTAL WELL DEPTH (FT. BGS): 15	GROUND ELEVATION (FT. AMSL): Not Measured
DEPTH TO WATER (FT. BGS): 8	ABANDONMENT METHOD: Native Soil



Drilling / Sample Method:

- Macro-Core
- Expendable Well Tip
- Hand Auger
- HydroPunch Groundwater Sampler

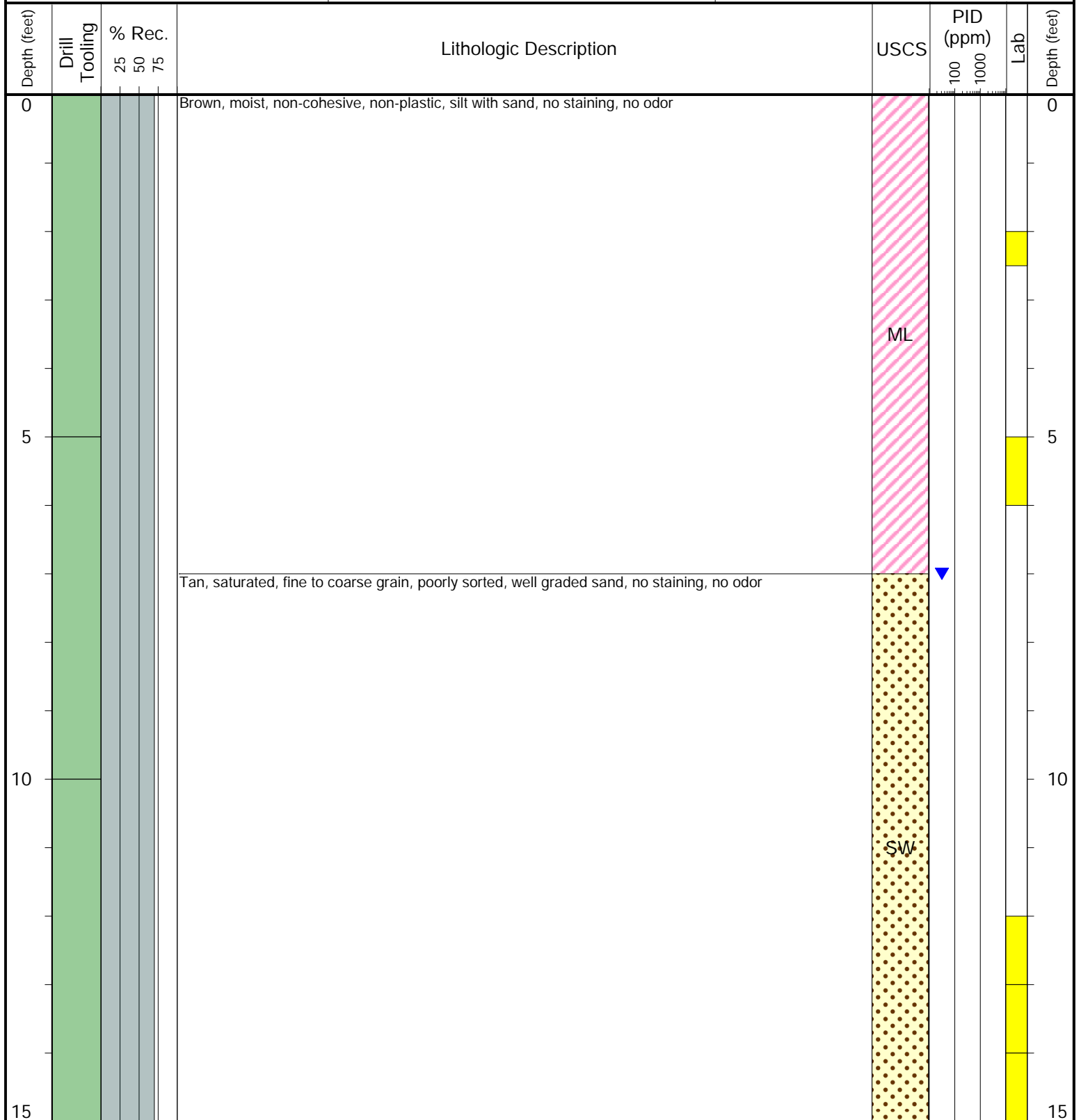
Laboratory Sample Types:

- Geotechnical Lab
- Analytical Chemistry Lab
- Geotechnical & Analytical Chemistry Lab



6855 W. 119th Ave.
Broomfield, CO 80020

CLIENT: Noble	Matsushiima PMK 2-01
LOGGED BY: Tanner Lacy, Matthew Bush	
PROJECT MANAGER: Bryce Goldade	BORING / WELL ID: SB02
DRILLING CONTRACTOR: Tasman	
DRILLING EQUIPMENT: Geoprobe	LOCATION: E of SB03
DRILL BIT SIZE (INCHES): 3.25	LATITUDE (NAD 83): 40.3471559
DATE STARTED - COMPLETED: 12/3/2024-12/3/2024	LONGITUDE (NAD 83): -104.737248
TOTAL WELL DEPTH (FT. BGS): 15	GROUND ELEVATION (FT. AMSL): Not Measured
DEPTH TO WATER (FT. BGS): 7	ABANDONMENT METHOD: Native Soil



Drilling / Sample Method:

- Macro-Core
- Hand Auger
- Expendable Well Tip
- HydroPunch Groundwater Sampler

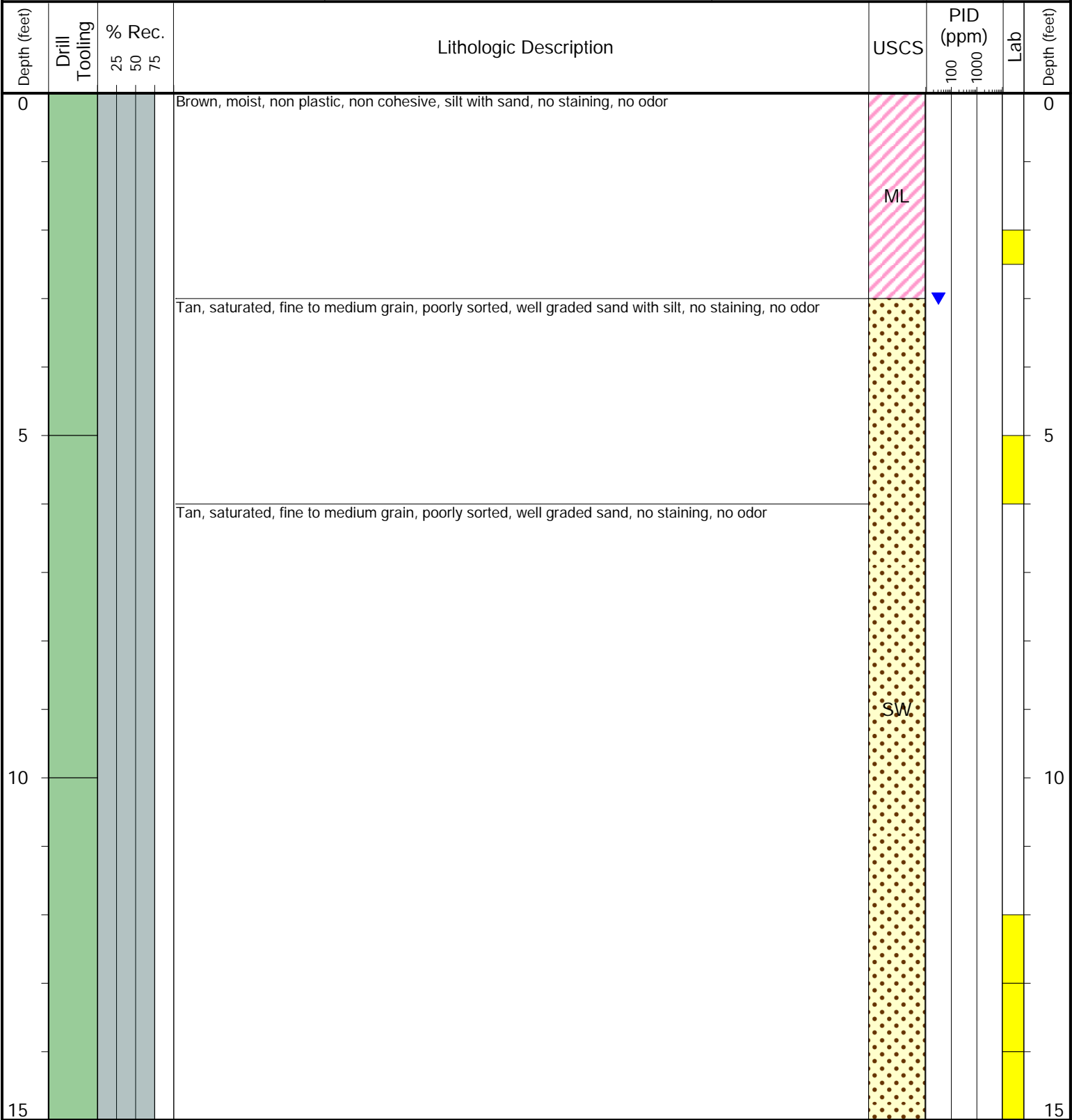
Laboratory Sample Types:

- Geotechnical Lab
- Geotechnical & Analytical Chemistry Lab
- Analytical Chemistry Lab



6855 W. 119th Ave.
Broomfield, CO 80020

CLIENT: Noble	Matsushiima PMK 2-01
LOGGED BY: Tanner Lacy, Matthew Bush	
PROJECT MANAGER: Bryce Goldade	BORING / WELL ID: SB03
DRILLING CONTRACTOR: Tasman	
DRILLING EQUIPMENT: Geoprobe	LOCATION: S of CR
DRILL BIT SIZE (INCHES): 3.25	LATITUDE (NAD 83): 40.3471202
DATE STARTED - COMPLETED: 12/3/2024-12/3/2024	LONGITUDE (NAD 83): -104.737299
TOTAL WELL DEPTH (FT. BGS): 15	GROUND ELEVATION (FT. AMSL): Not Measured
DEPTH TO WATER (FT. BGS): 3	ABANDONMENT METHOD: Native Soil



Drilling / Sample Method:

- Macro-Core
- Expendable Well Tip
- Hand Auger
- HydroPunch Groundwater Sampler

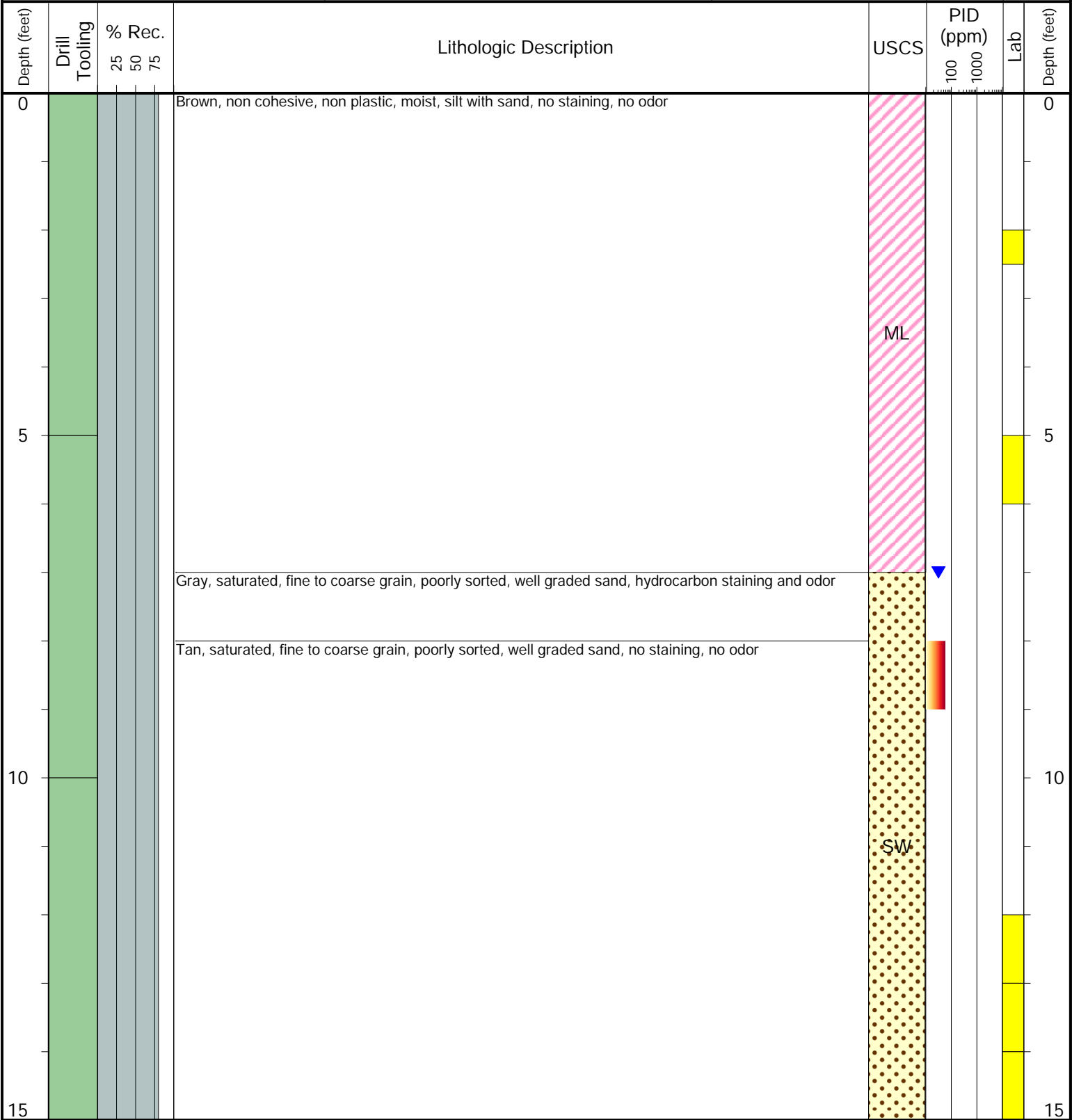
Laboratory Sample Types:

- Geotechnical Lab
- Analytical Chemistry Lab
- Geotechnical & Analytical Chemistry Lab



6855 W. 119th Ave.
Broomfield, CO 80020

CLIENT: Noble	Matsushiima PMK 2-01
LOGGED BY: Tanner Lacy, Matthew Bush	
PROJECT MANAGER: Bryce Goldade	BORING / WELL ID: SB04
DRILLING CONTRACTOR: Tasman	
DRILLING EQUIPMENT: Geoprobe	LOCATION: E of BH01
DRILL BIT SIZE (INCHES): 3.25	LATITUDE (NAD 83): 40.3471536
DATE STARTED - COMPLETED: 12/3/2024-12/3/2024	LONGITUDE (NAD 83): -104.737354
TOTAL WELL DEPTH (FT. BGS): 15	GROUND ELEVATION (FT. AMSL): Not Measured
DEPTH TO WATER (FT. BGS): 7	ABANDONMENT METHOD: Native Soil



Drilling / Sample Method:

- Macro-Core
- Expendable Well Tip
- Hand Auger
- HydroPunch Groundwater Sampler

Laboratory Sample Types:

- Geotechnical Lab
- Analytical Chemistry Lab
- Geotechnical & Analytical Chemistry Lab



6855 W. 119th Ave.
Broomfield, CO 80020

CLIENT: Noble	Matsushiima PMK 2-01
LOGGED BY: Tanner Lacy, Matthew Bush	
PROJECT MANAGER: Bryce Goldade	BORING / WELL ID: SB05
DRILLING CONTRACTOR: Tasman	
DRILLING EQUIPMENT: Geoprobe	LOCATION: N of SB06
DRILL BIT SIZE (INCHES): 3.25	LATITUDE (NAD 83): 40.3472414
DATE STARTED - COMPLETED: 12/3/2024-12/3/2024	LONGITUDE (NAD 83): -104.73737
TOTAL WELL DEPTH (FT. BGS): 15	GROUND ELEVATION (FT. AMSL): Not Measured
DEPTH TO WATER (FT. BGS): 8	ABANDONMENT METHOD: Native Soil

Depth (feet)	Drill Tooling	% Rec. 25 50 75	Lithologic Description	USCS	PID (ppm)		Lab	Depth (feet)
					100	1000		
0			Brown, moist, non plastic, non cohesive, silt with sand, no staining, no odor	ML				0
			Gray, moist, medium plasticity, medium cohesion, lean clay, organic staining and odor	CL				
			Tan, non plastic, non cohesive, moist, silt with sand, no staining, no odor	ML				
5			Gray/brown, medium plasticity, medium cohesion, moist, lean clay, staining, no odor	CL				5
			Tan, fine to medium grain, saturated, poorly sorted, well graded sand with silt, no staining, no odor	SW				
10								10
15								15

Drilling / Sample Method:

Macro-Core

Expendable Well Tip

Hand Auger

HydroPunch Groundwater Sampler

Laboratory Sample Types:

Geotechnical Lab

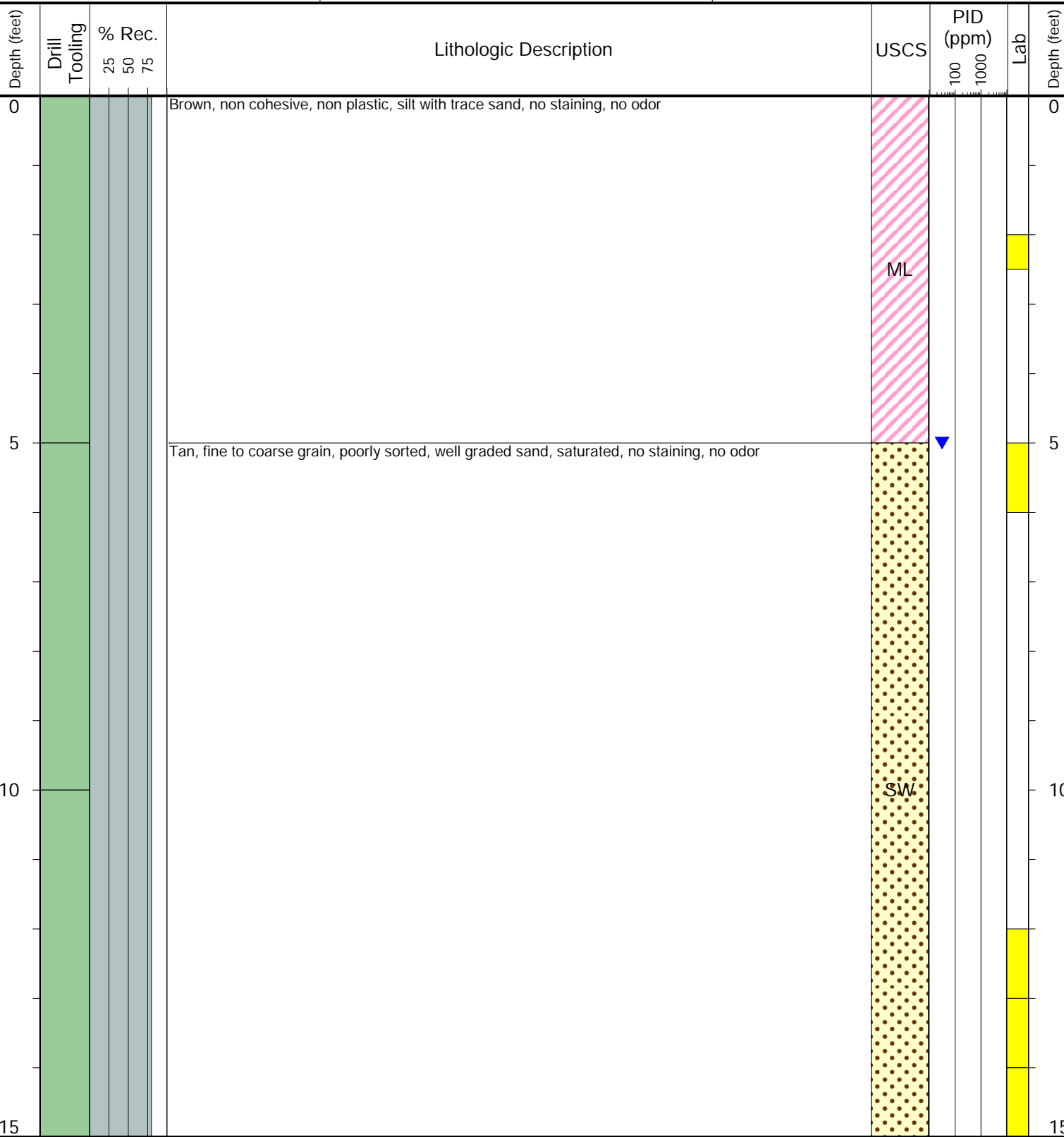
Analytical Chemistry Lab

Geotechnical & Analytical Chemistry Lab



6855 W. 119th Ave.
Broomfield, CO 80020

CLIENT: Noble	Matsushiima PMK 2-01
LOGGED BY: Tanner Lacy, Matthew Bush	
PROJECT MANAGER: Bryce Goldade	BORING / WELL ID: SB06
DRILLING CONTRACTOR: Tasman	
DRILLING EQUIPMENT: Geoprobe	LOCATION: SW of SB04
DRILL BIT SIZE (INCHES): 3.25	LATITUDE (NAD 83): 40.3470572
DATE STARTED - COMPLETED: 12/3/2024-12/3/2024	LONGITUDE (NAD 83): -104.737359
TOTAL WELL DEPTH (FT. BGS): 15	GROUND ELEVATION (FT. AMSL): Not Measured
DEPTH TO WATER (FT. BGS): 5	ABANDONMENT METHOD: Native Soil



Drilling / Sample Method:

Macro-Core

Expendable Well Tip

Hand Auger

HydroPunch Groundwater Sampler

Laboratory Sample Types:

Geotechnical Lab

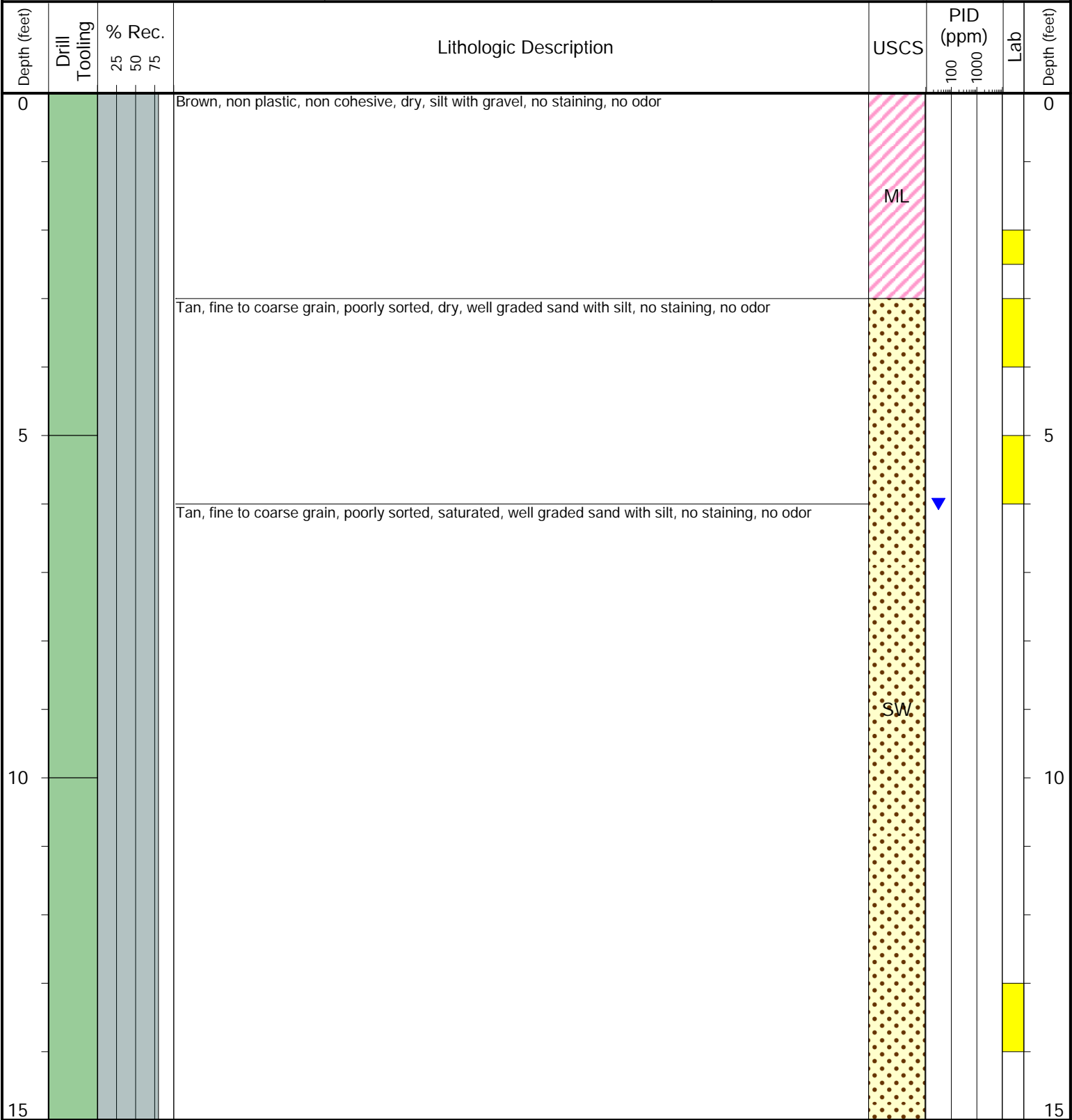
Analytical Chemistry Lab

Geotechnical & Analytical Chemistry Lab



6855 W. 119th Ave.
Broomfield, CO 80020

CLIENT: Noble	Matsushiima PMK 2-01
LOGGED BY: Tanner Lacy, Matthew Bush	
PROJECT MANAGER: Bryce Goldade	BORING / WELL ID: BKG06
DRILLING CONTRACTOR: Tasman	
DRILLING EQUIPMENT: Geoprobe	LOCATION: W of SB05
DRILL BIT SIZE (INCHES): 3.25	LATITUDE (NAD 83): 40.3471128
DATE STARTED - COMPLETED: 12/3/2024-12/3/2024	LONGITUDE (NAD 83): -104.737808
TOTAL WELL DEPTH (FT. BGS): 15	GROUND ELEVATION (FT. AMSL): Not Measured
DEPTH TO WATER (FT. BGS): 6	ABANDONMENT METHOD: Native Soil



Drilling / Sample Method:

- Macro-Core
- Expendable Well Tip
- Hand Auger
- HydroPunch Groundwater Sampler

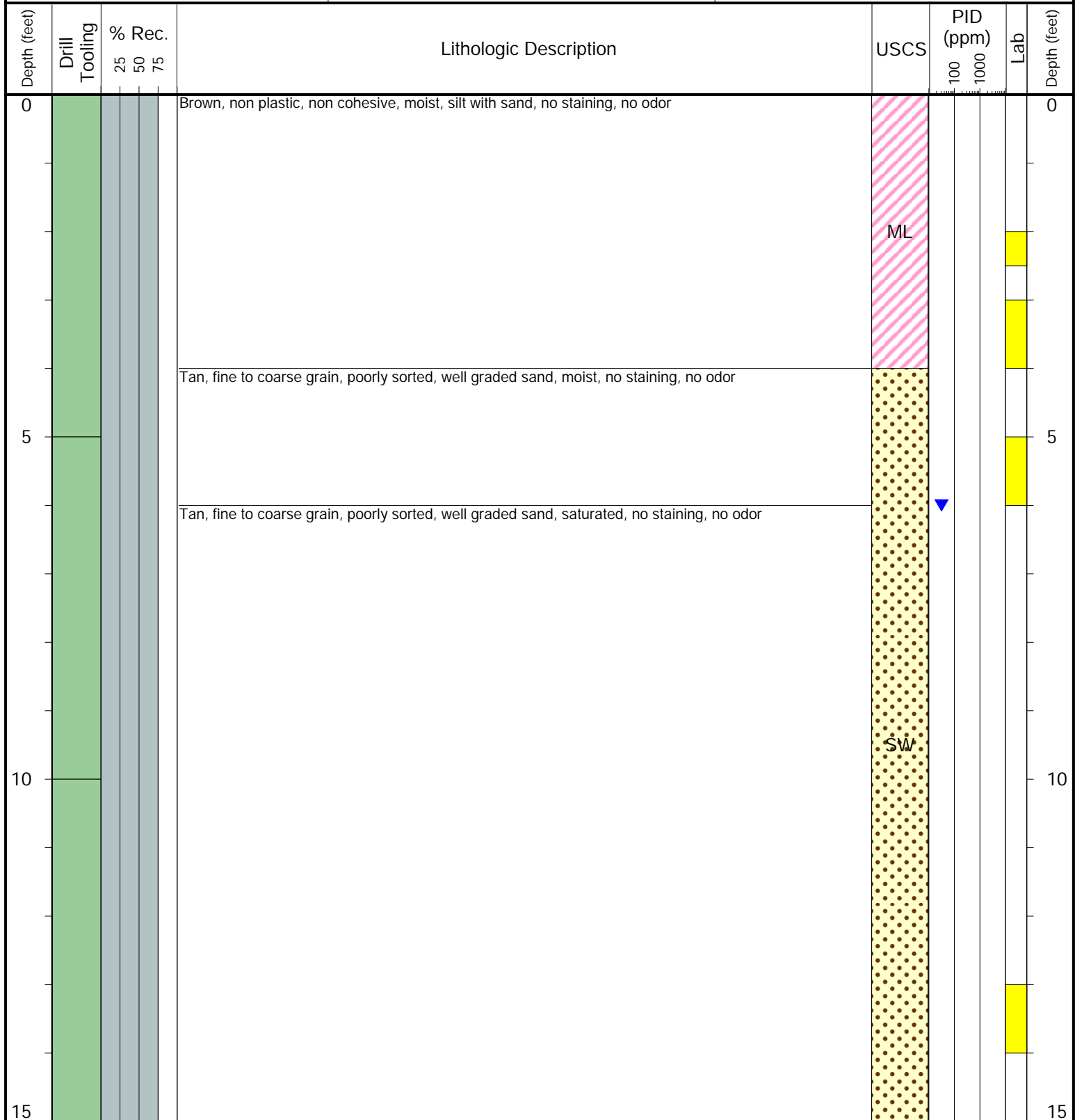
Laboratory Sample Types:

- Geotechnical Lab
- Analytical Chemistry Lab
- Geotechnical & Analytical Chemistry Lab



6855 W. 119th Ave.
Broomfield, CO 80020

CLIENT: Noble	Matsushiima PMK 2-01
LOGGED BY: Tanner Lacy, Matthew Bush	
PROJECT MANAGER: Bryce Goldade	BORING / WELL ID: BKG07
DRILLING CONTRACTOR: Tasman	
DRILLING EQUIPMENT: Geoprobe	LOCATION: S of BKG04
DRILL BIT SIZE (INCHES): 3.25	LATITUDE (NAD 83): 40.3470119
DATE STARTED - COMPLETED: 12/3/2024-12/3/2024	LONGITUDE (NAD 83): -104.737765
TOTAL WELL DEPTH (FT. BGS): 15	GROUND ELEVATION (FT. AMSL): Not Measured
DEPTH TO WATER (FT. BGS): 6	ABANDONMENT METHOD: Native Soil



Drilling / Sample Method:

- Macro-Core
- Expendable Well Tip
- Hand Auger
- HydroPunch Groundwater Sampler

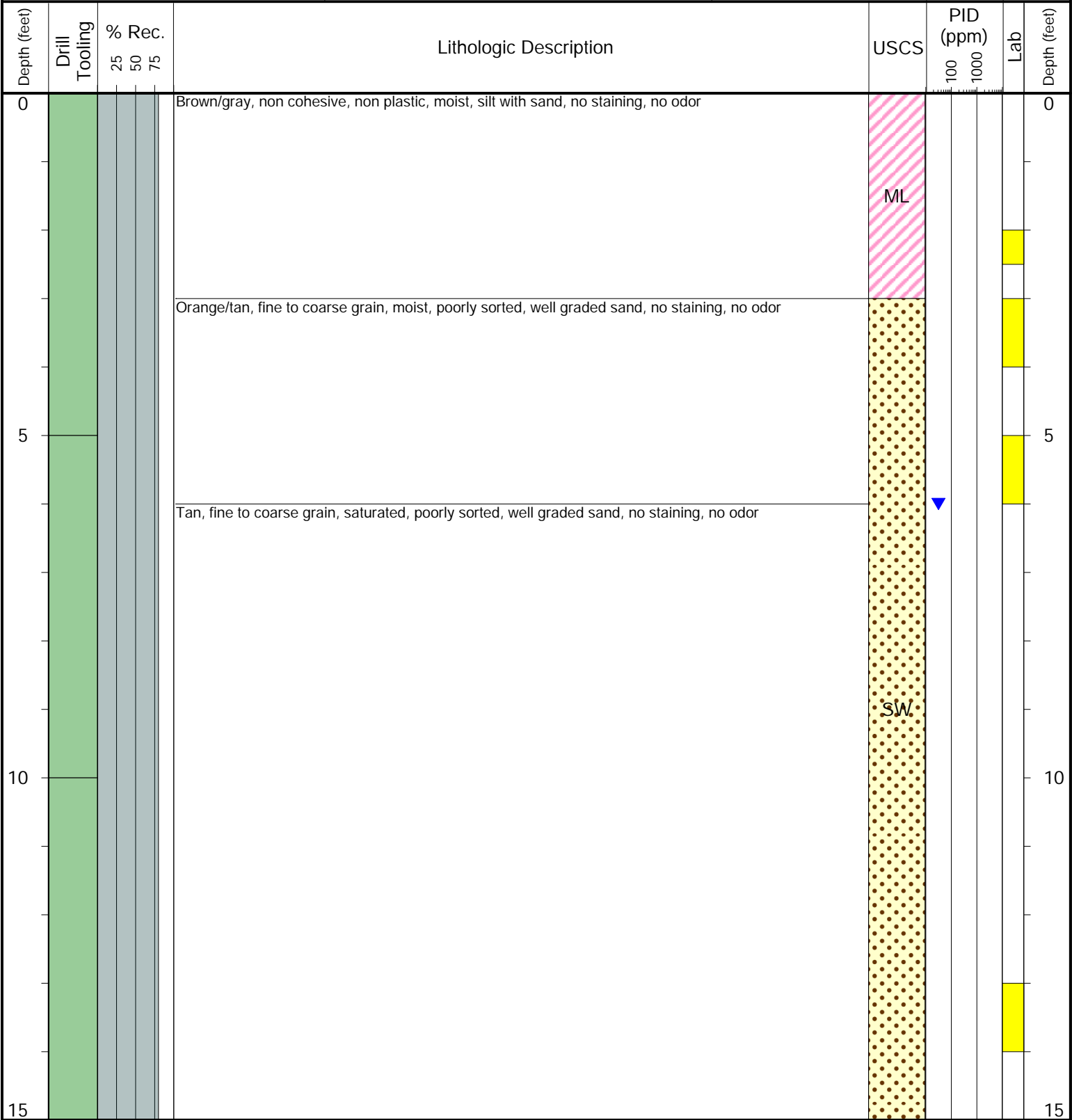
Laboratory Sample Types:

- Geotechnical Lab
- Analytical Chemistry Lab
- Geotechnical & Analytical Chemistry Lab



6855 W. 119th Ave.
Broomfield, CO 80020

CLIENT: Noble	Matsushiima PMK 2-01
LOGGED BY: Tanner Lacy, Matthew Bush	
PROJECT MANAGER: Bryce Goldade	BORING / WELL ID: BKG08
DRILLING CONTRACTOR: Tasman	
DRILLING EQUIPMENT: Geoprobe	LOCATION: SW of pad
DRILL BIT SIZE (INCHES): 3.25	LATITUDE (NAD 83): 40.3469397
DATE STARTED - COMPLETED: 12/3/2024-12/3/2024	LONGITUDE (NAD 83): -104.737486
TOTAL WELL DEPTH (FT. BGS): 15	GROUND ELEVATION (FT. AMSL): Not Measured
DEPTH TO WATER (FT. BGS): 6	ABANDONMENT METHOD: Native Soil



Drilling / Sample Method:

- Macro-Core
- Expendable Well Tip
- Hand Auger
- HydroPunch Groundwater Sampler

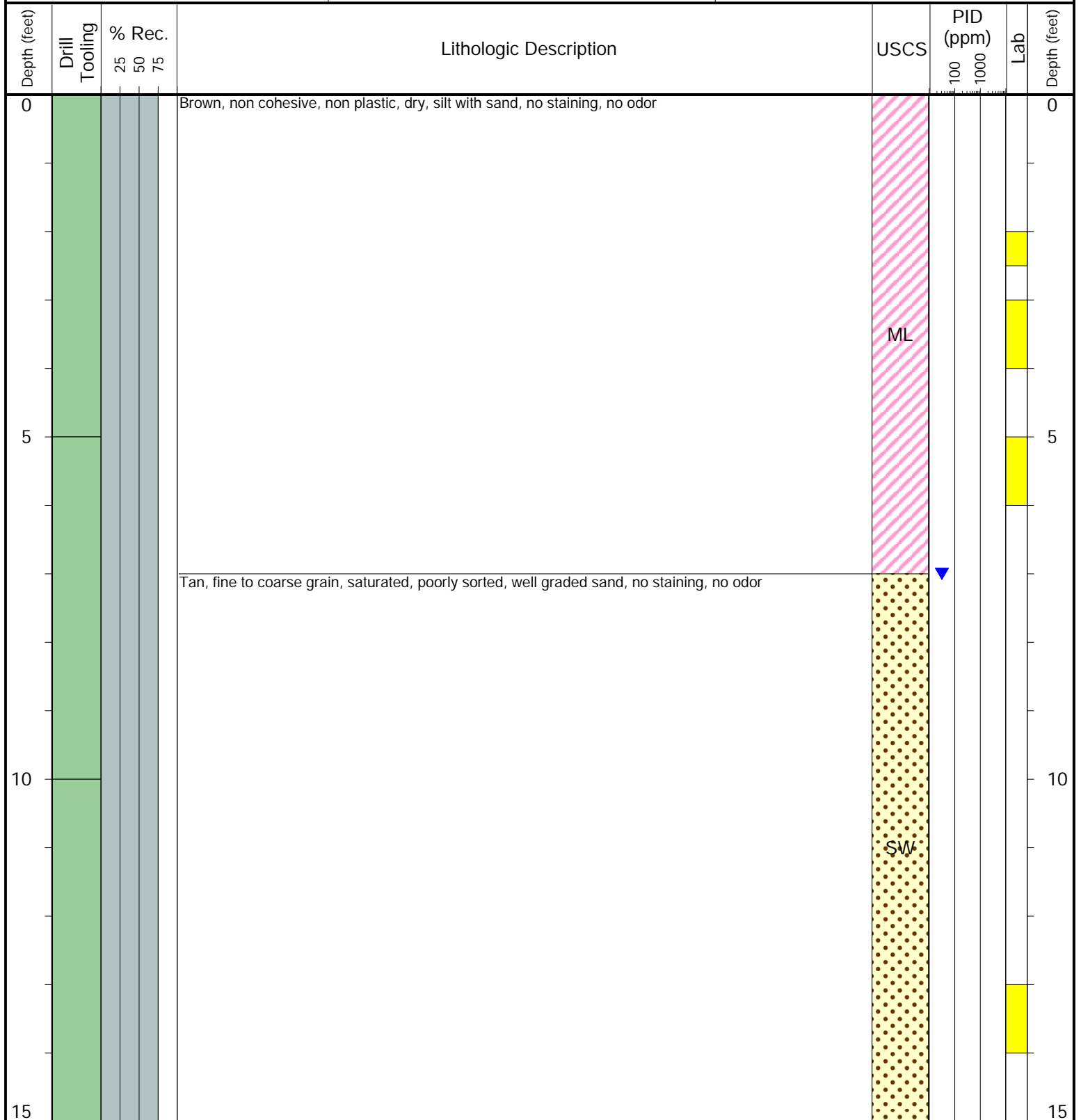
Laboratory Sample Types:

- Geotechnical Lab
- Analytical Chemistry Lab
- Geotechnical & Analytical Chemistry Lab



6855 W. 119th Ave.
Broomfield, CO 80020

CLIENT: Noble	Matsushiima PMK 2-01
LOGGED BY: Tanner Lacy, Matthew Bush	
PROJECT MANAGER: Bryce Goldade	BORING / WELL ID: BKG09
DRILLING CONTRACTOR: Tasman	
DRILLING EQUIPMENT: Geoprobe	LOCATION: E of pad
DRILL BIT SIZE (INCHES): 3.25	LATITUDE (NAD 83): 40.347214
DATE STARTED - COMPLETED: 12/3/2024-12/3/2024	LONGITUDE (NAD 83): -104.737016
TOTAL WELL DEPTH (FT. BGS): 15	GROUND ELEVATION (FT. AMSL): Not Measured
DEPTH TO WATER (FT. BGS): 7	ABANDONMENT METHOD: Native Soil



Drilling / Sample Method:

- ☒ Macro-Core
- ☐ Hand Auger
- ☐ HydroPunch Groundwater Sampler
- ☐ Expendable Well Tip

Laboratory Sample Types:

- ☒ Geotechnical Lab
- ☒ Geotechnical & Analytical Chemistry Lab
- ☐ Analytical Chemistry Lab