

Signage visible at facility.



Tank with placard.

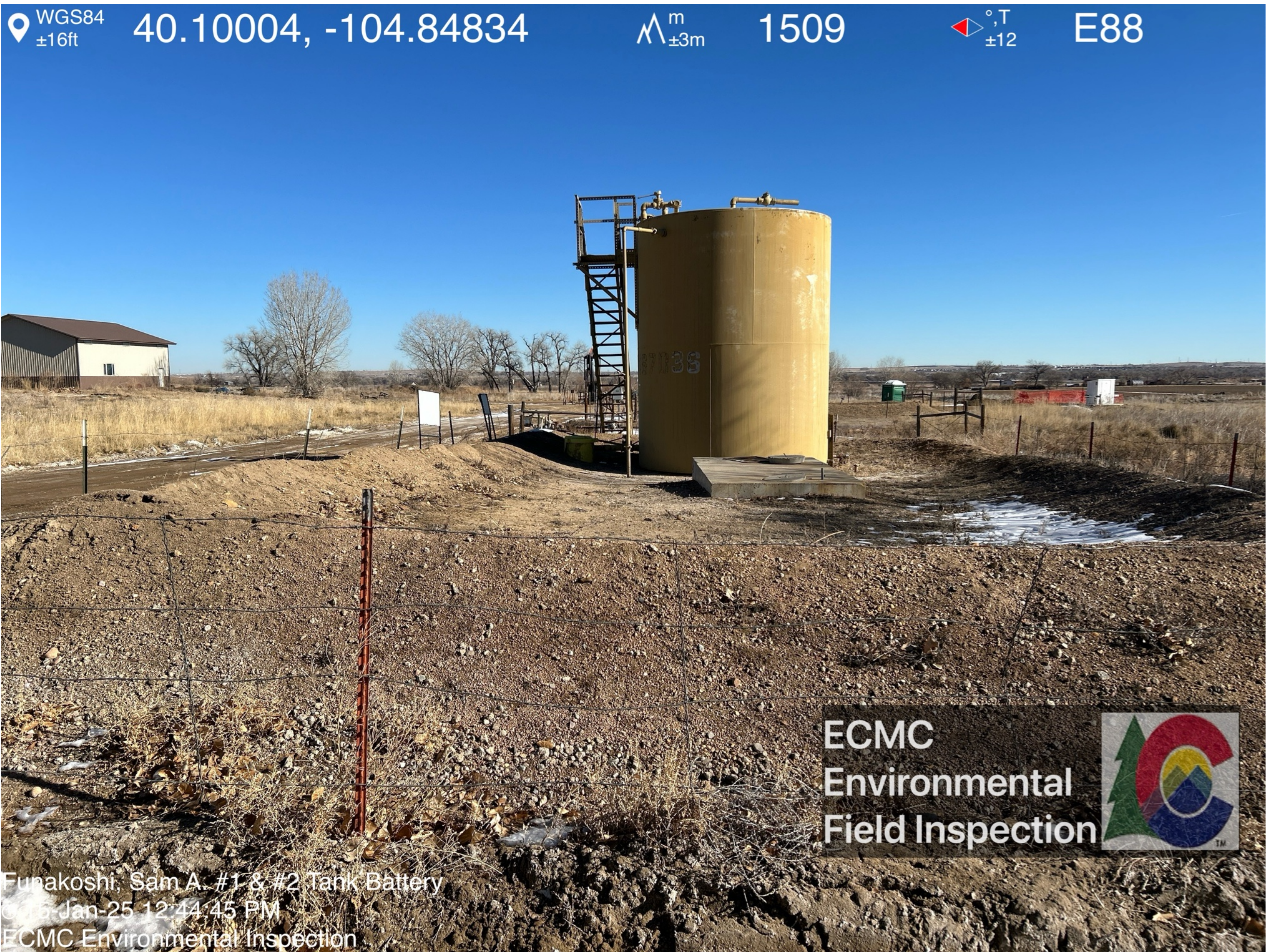




Signage visible at produced water vessel.

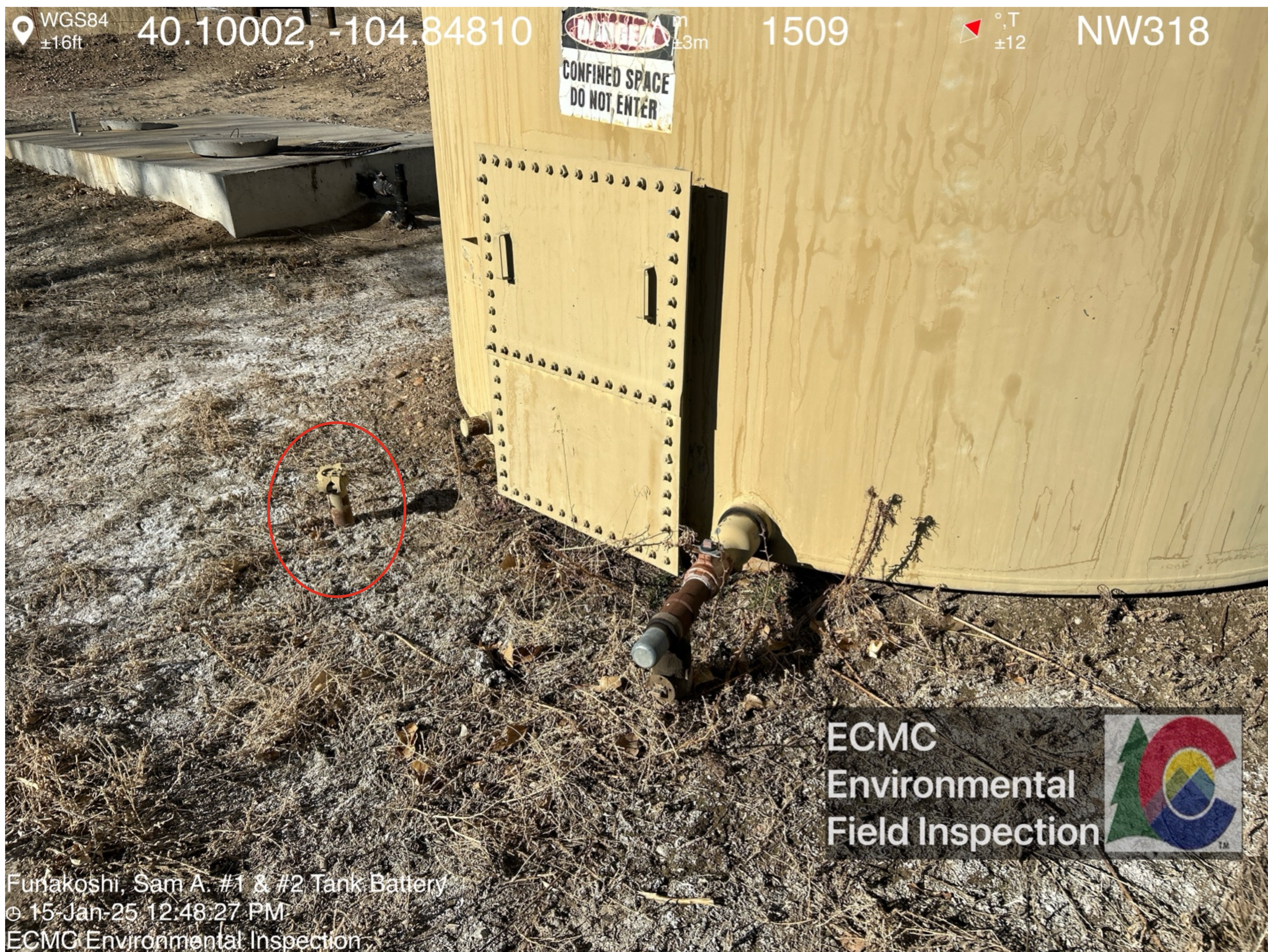


Tank and produced water vessel share containment.

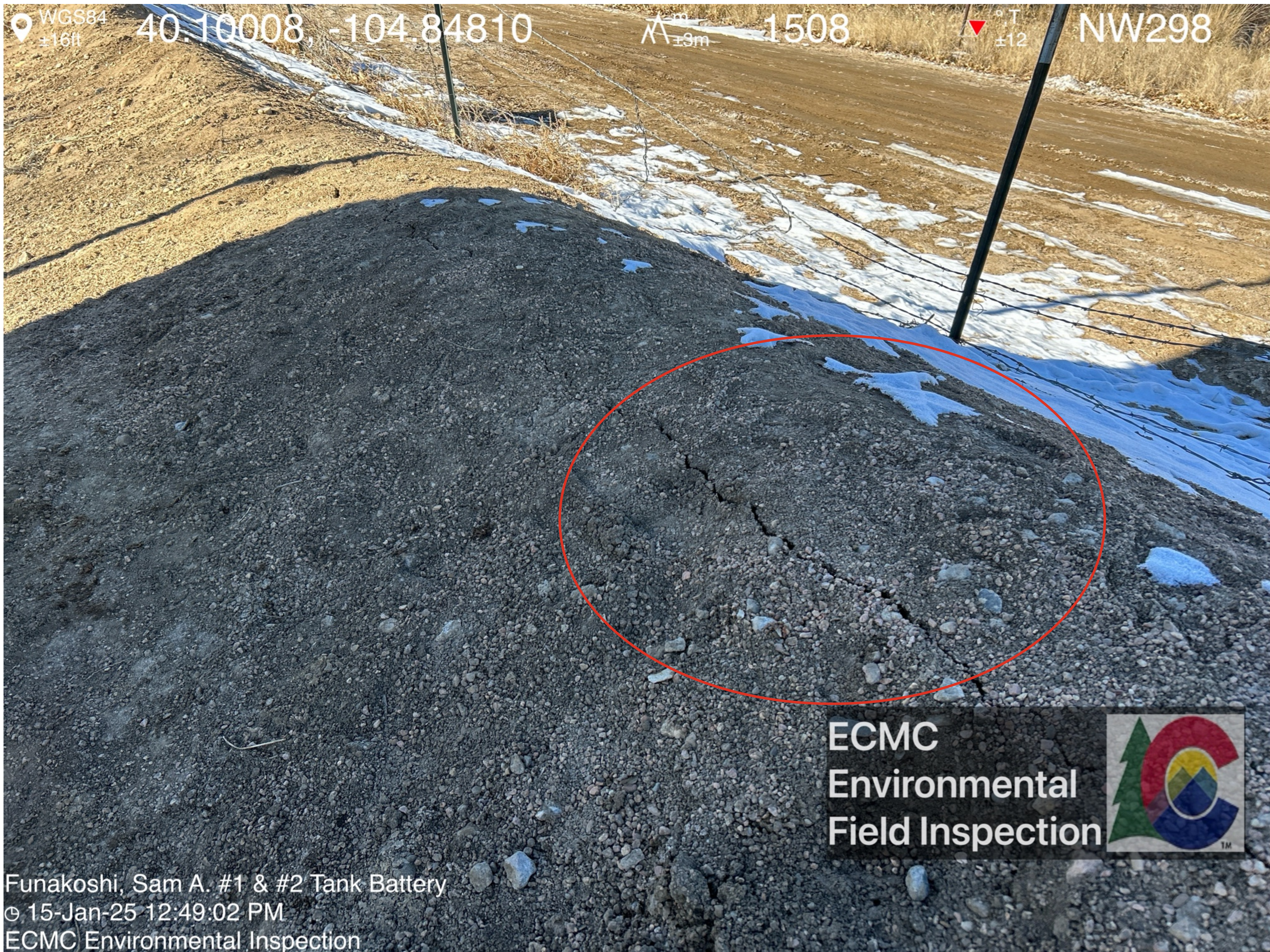




Riser missing OOSLAT.

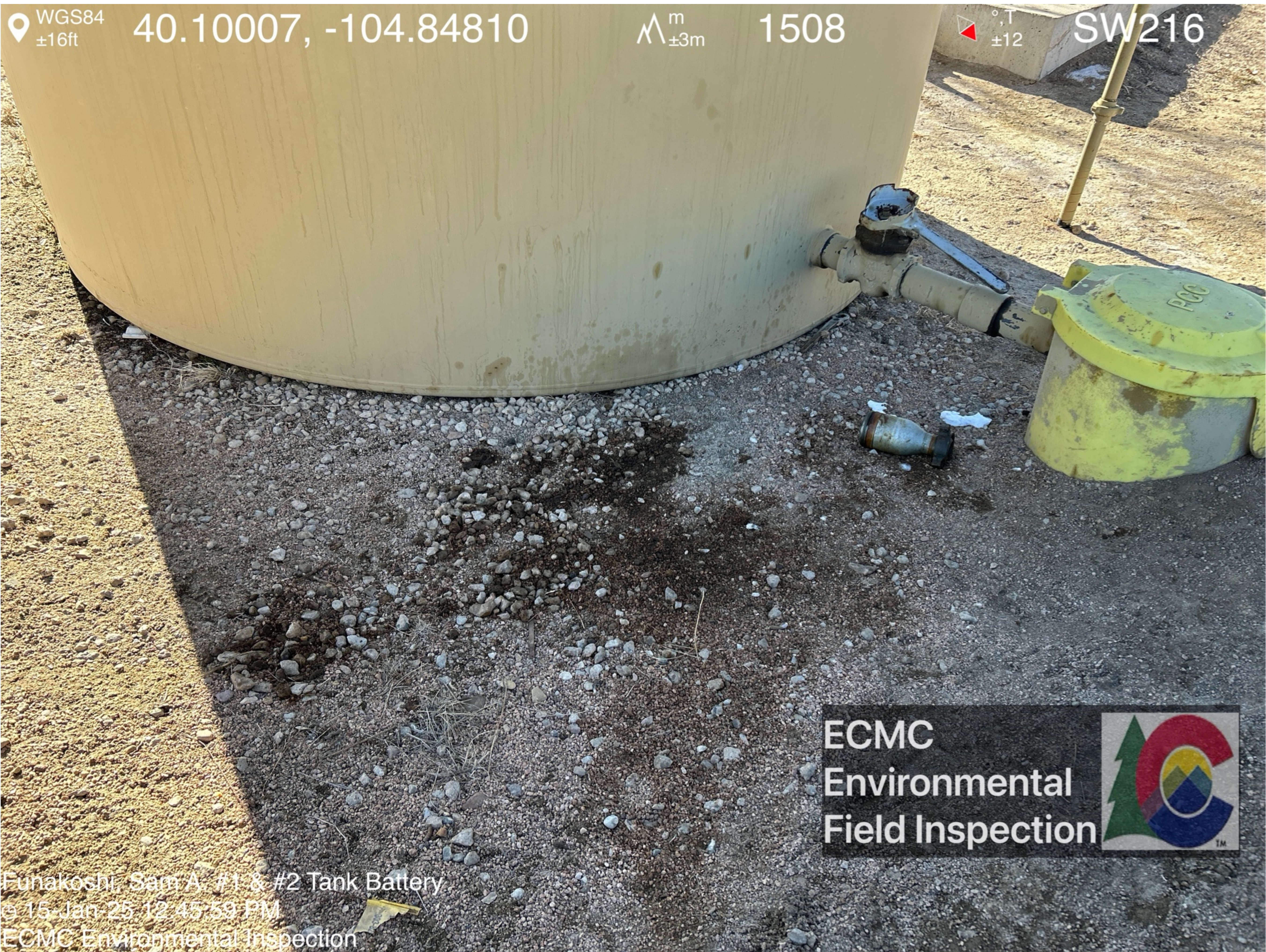
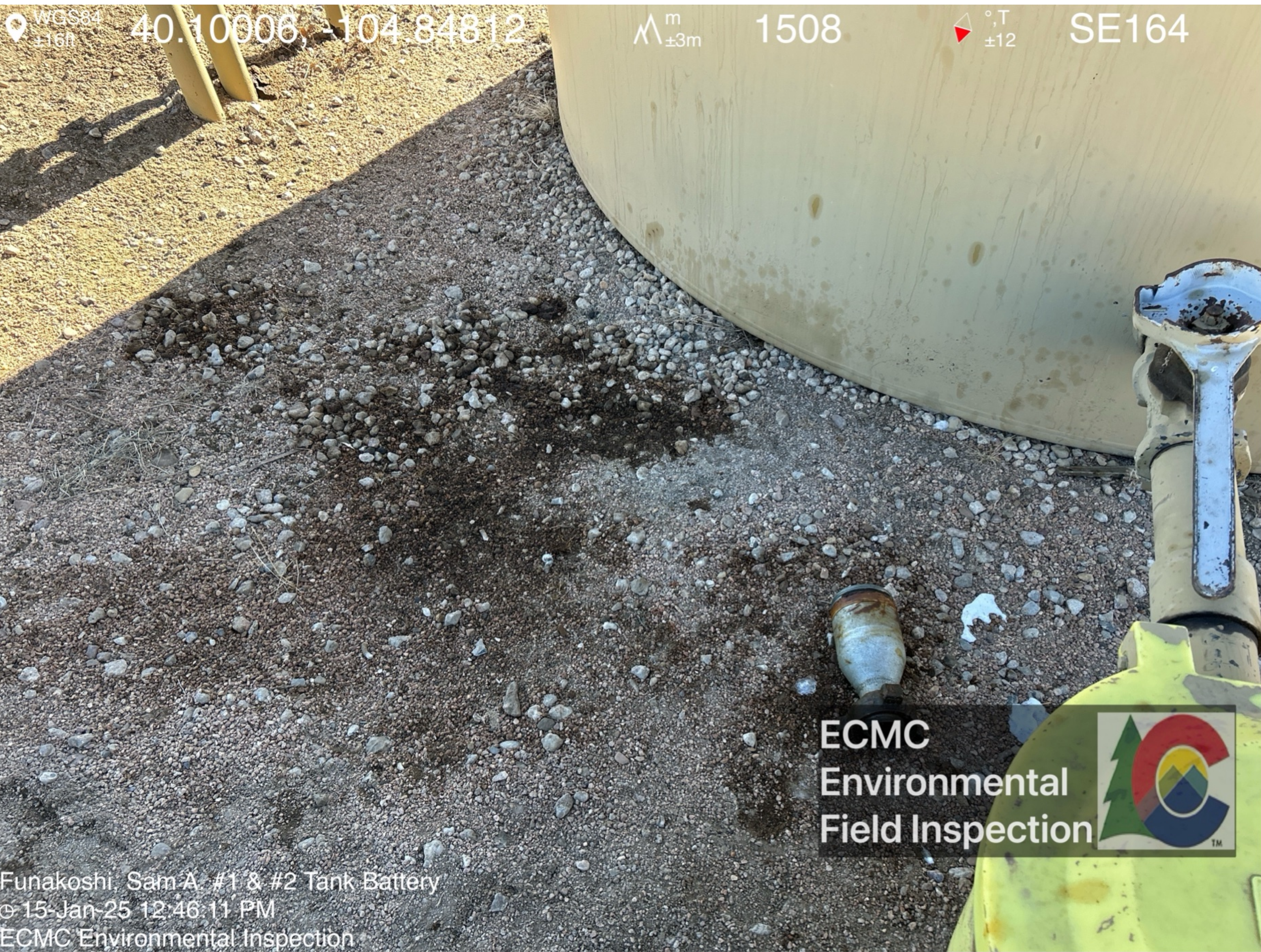


Surface crack observed on the crude oil AST and produced water vesssel berm.





Petroleum hydrocarbon staining visible at crude oil AST valve.  
Very strong petroleum hydrocarbon odor observed in area of stained soil.





Petroleum hydrocarbon staining visible at crude oil AST valve.  
Very strong petroleum hydrocarbon odor observed in area of stained soil.



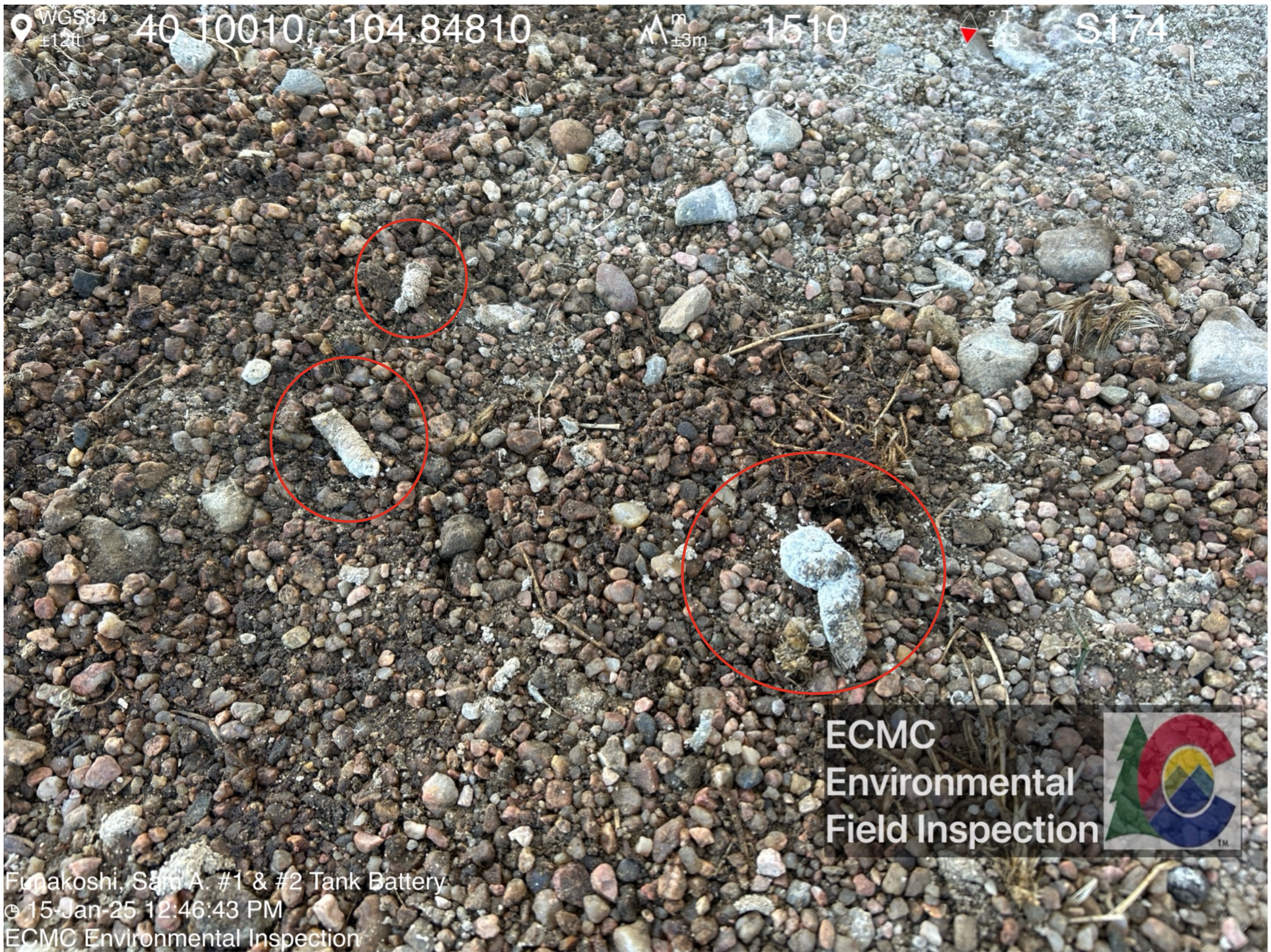


Residual petroleum hydrocarbon fluids are visible in discarded equipment.





Wildlife scat observed on petroleum hydrocarbon saturated soil.

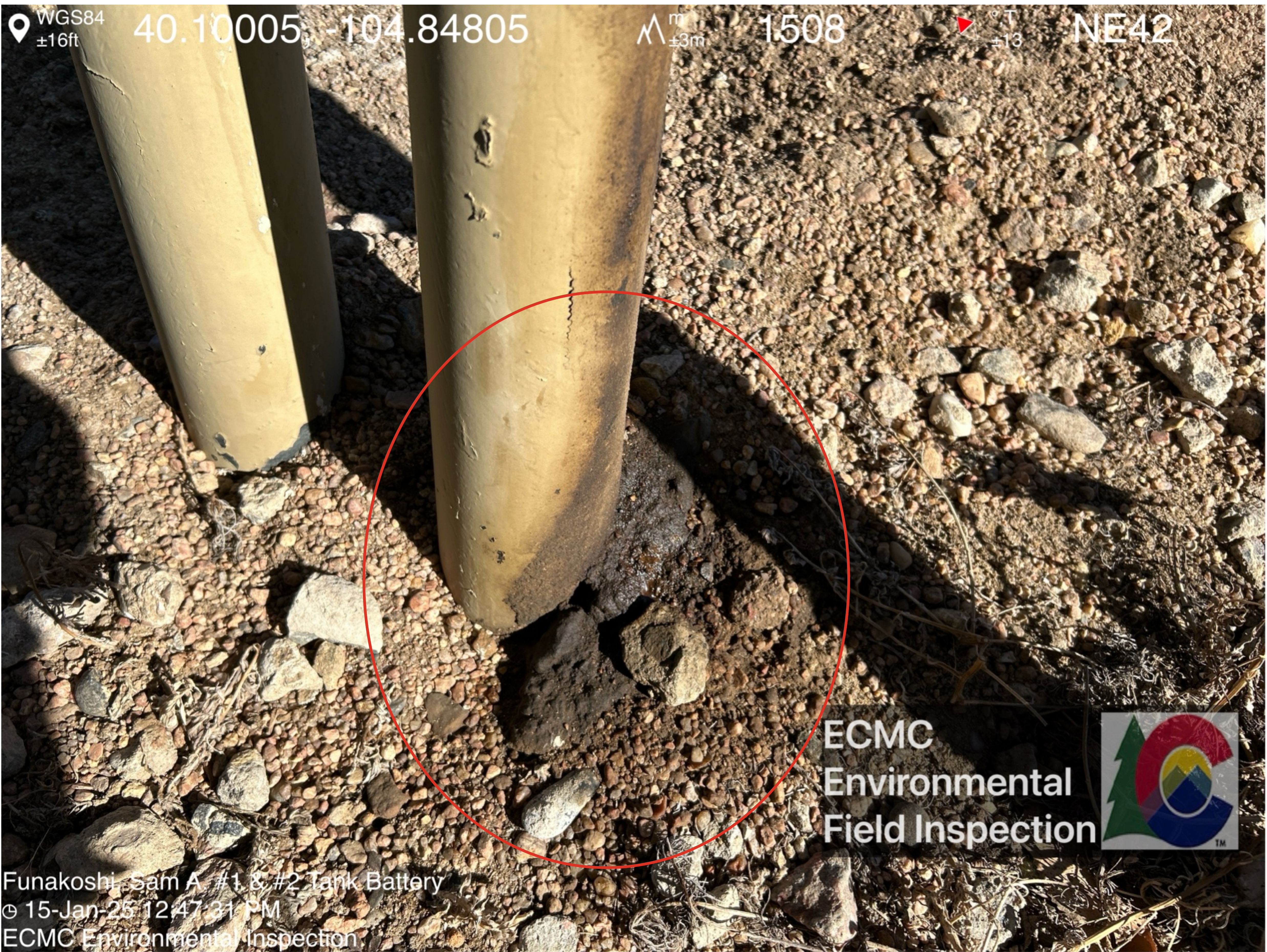


Petroleum hydrocarbon staining and odor observed on and beneath pipe manifold valve.

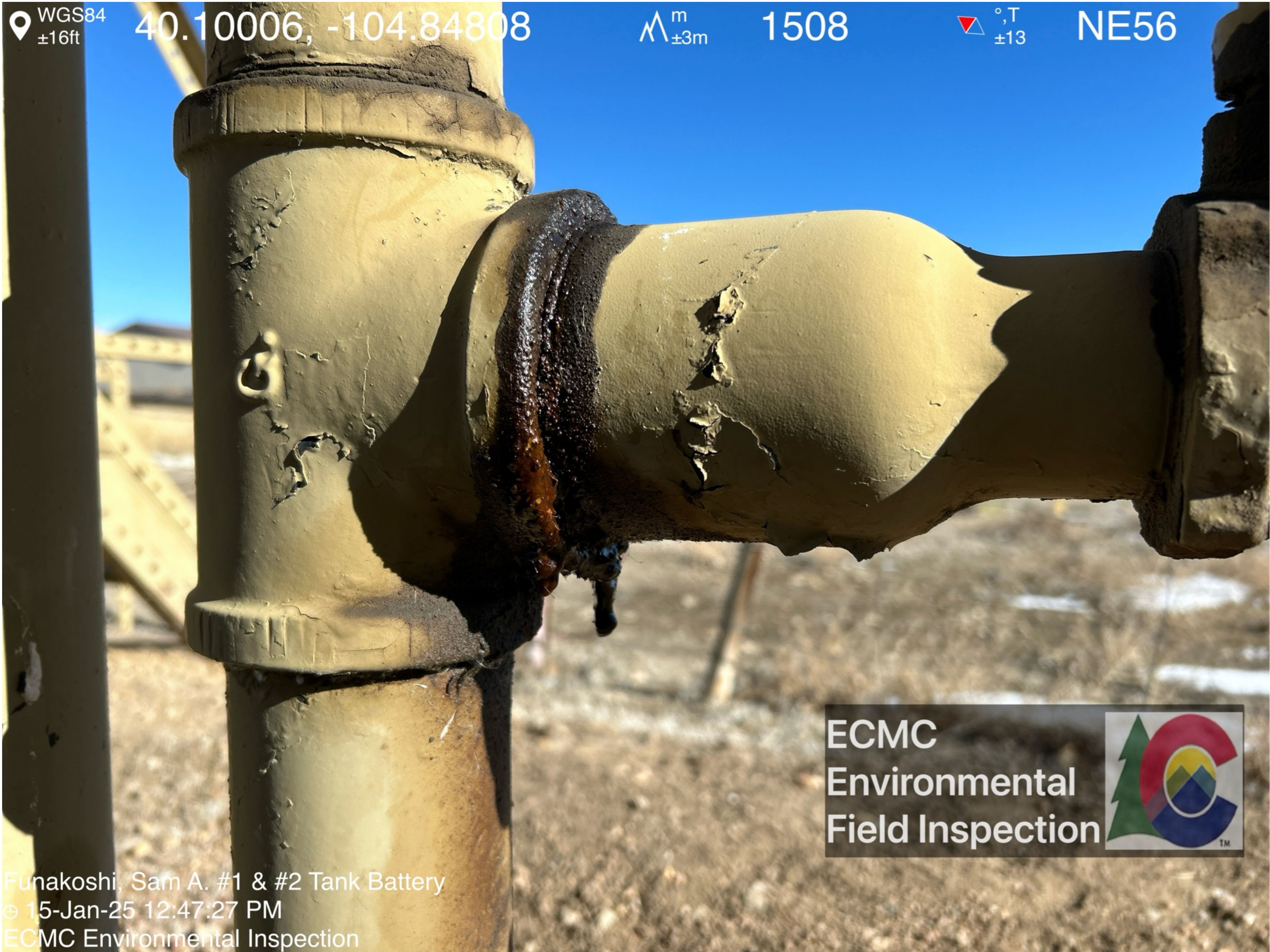




Strong petroleum hydrocarbon odor observed on stained soil.

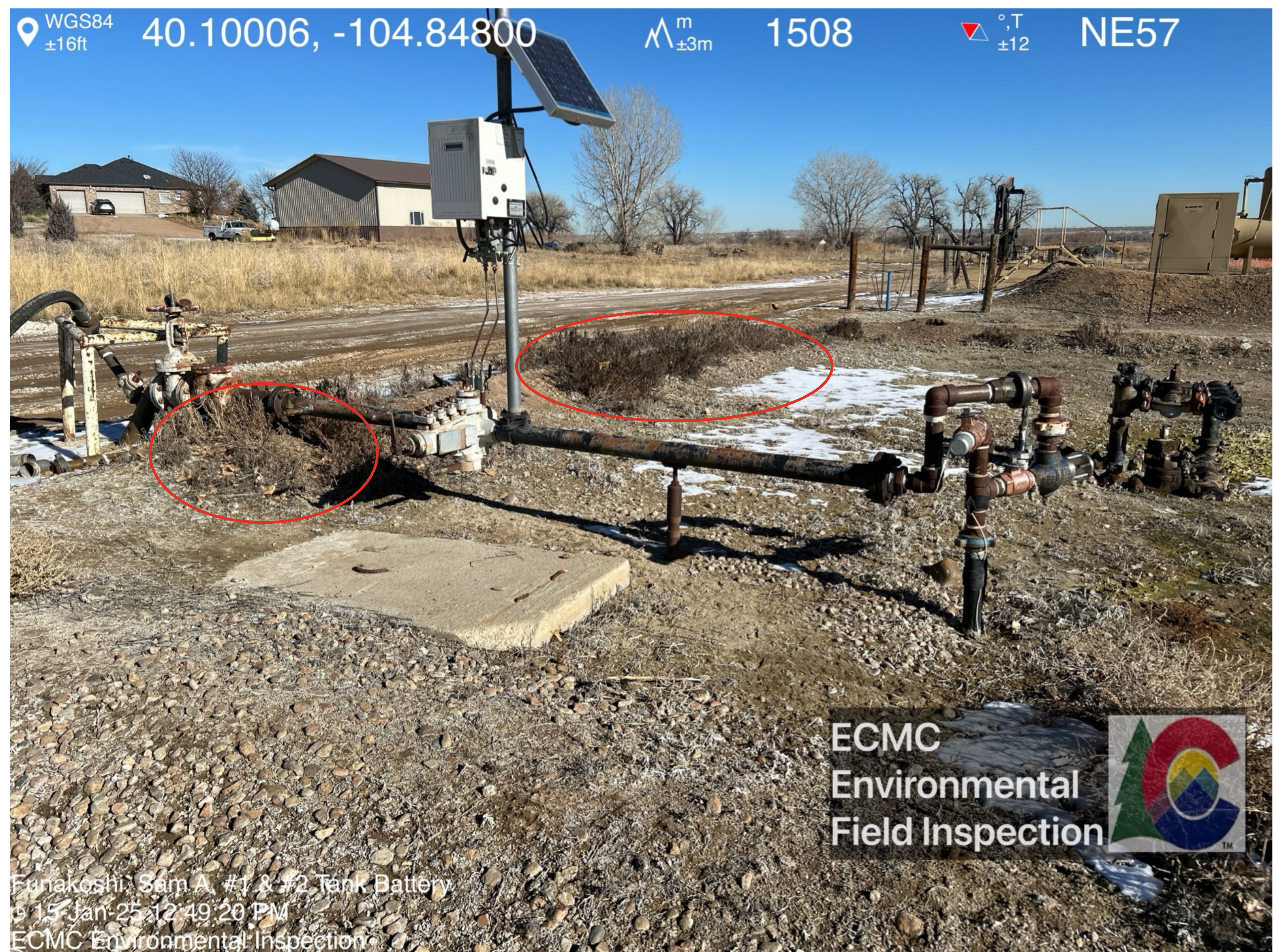


Petroleum hydrocarbon staining visible around valve.

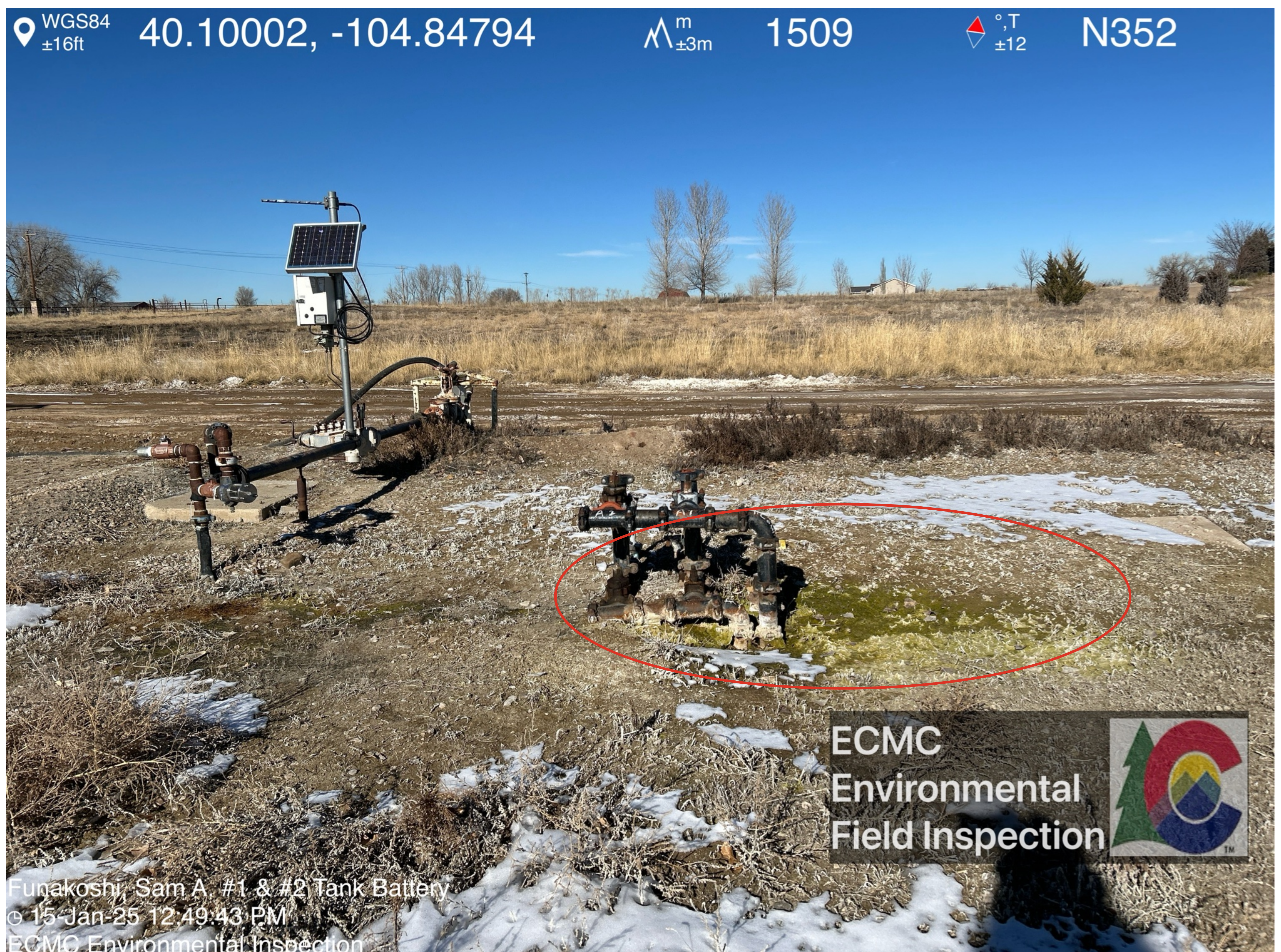




Weeds are present on ancillary equipment berm.

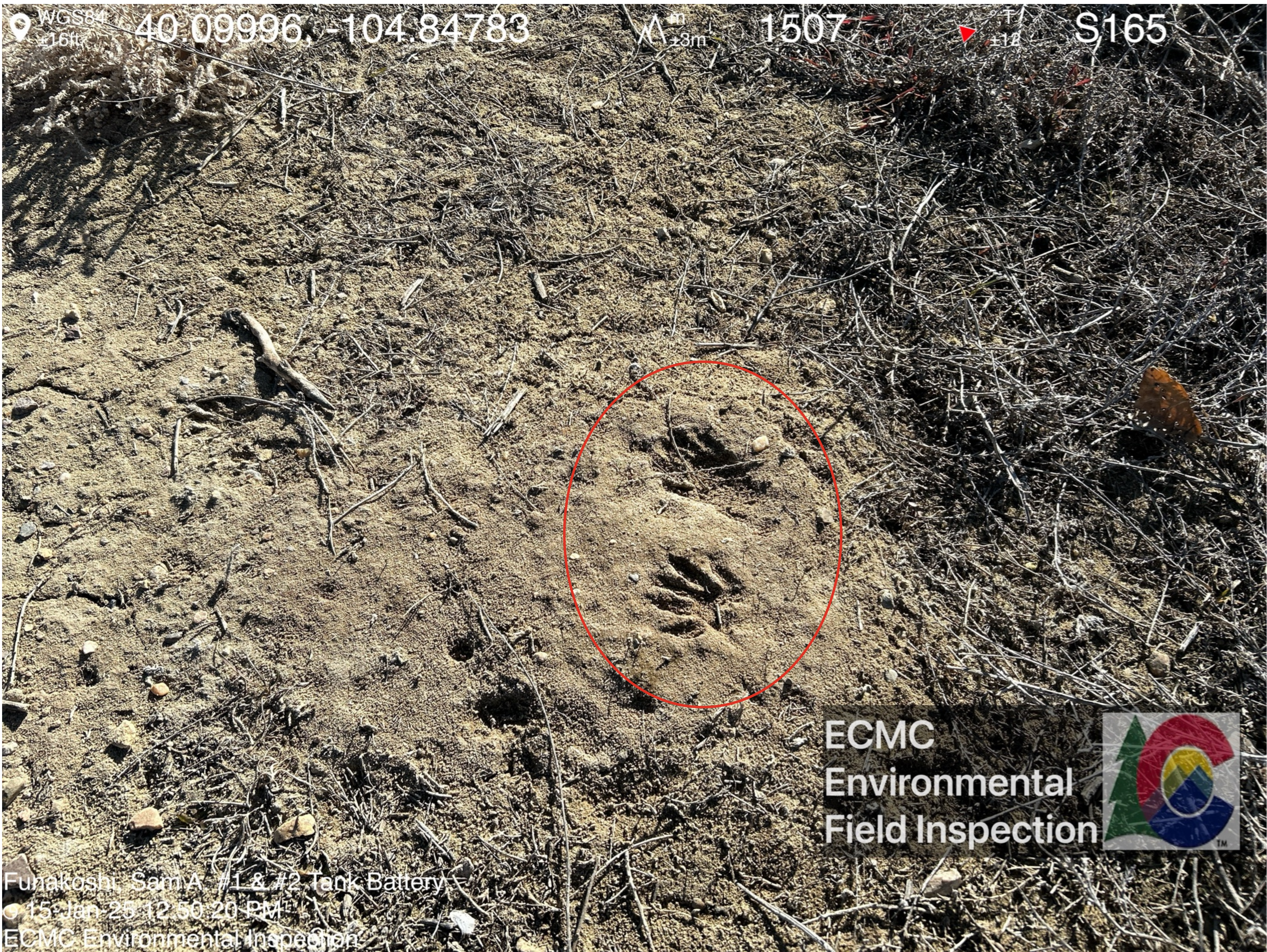
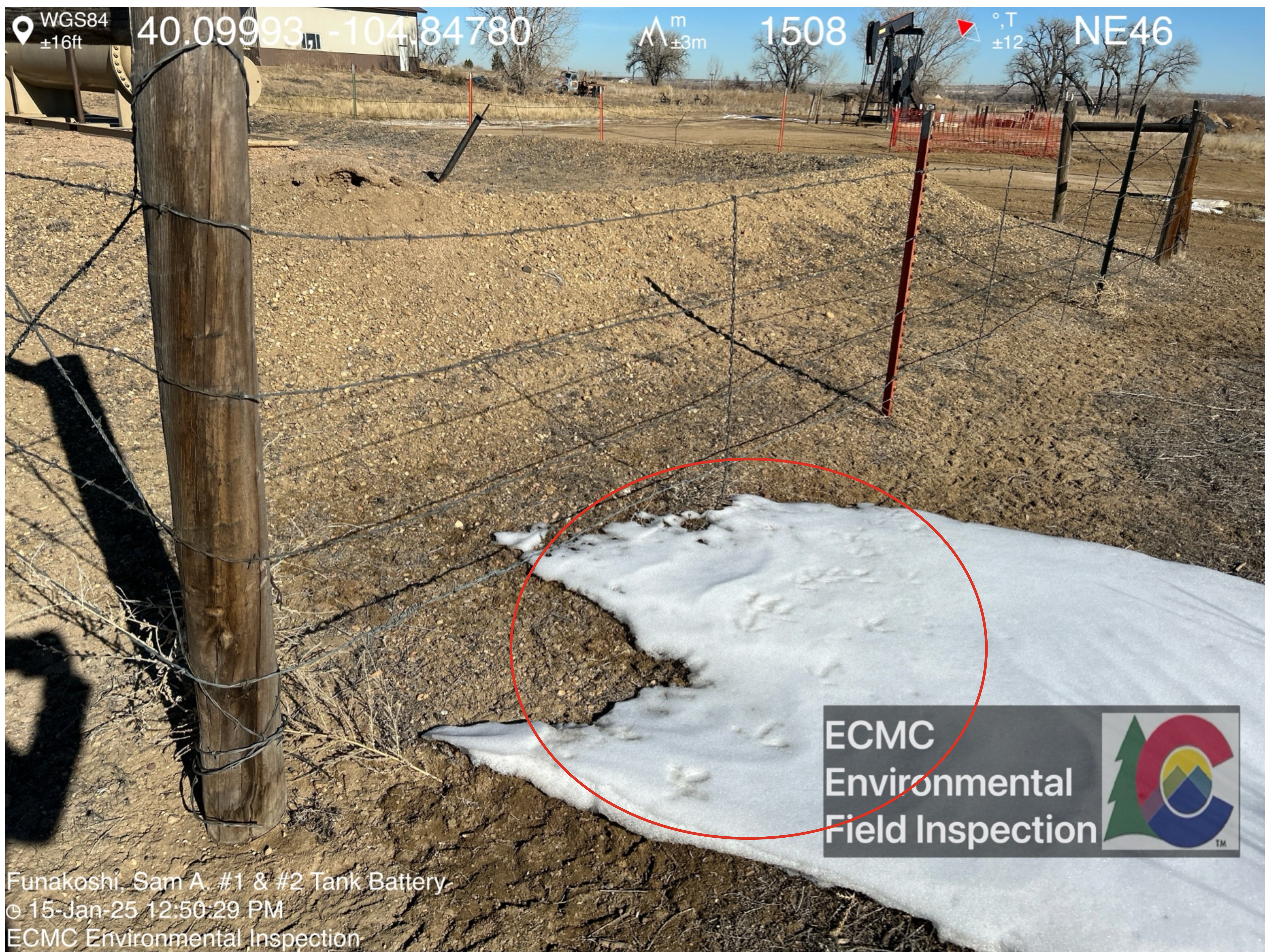


Green staining in location of stagnant water visible in previous inspection photo log.





Wildlife tracks observed on location.





Wildlife burrow visible on separator berm.

