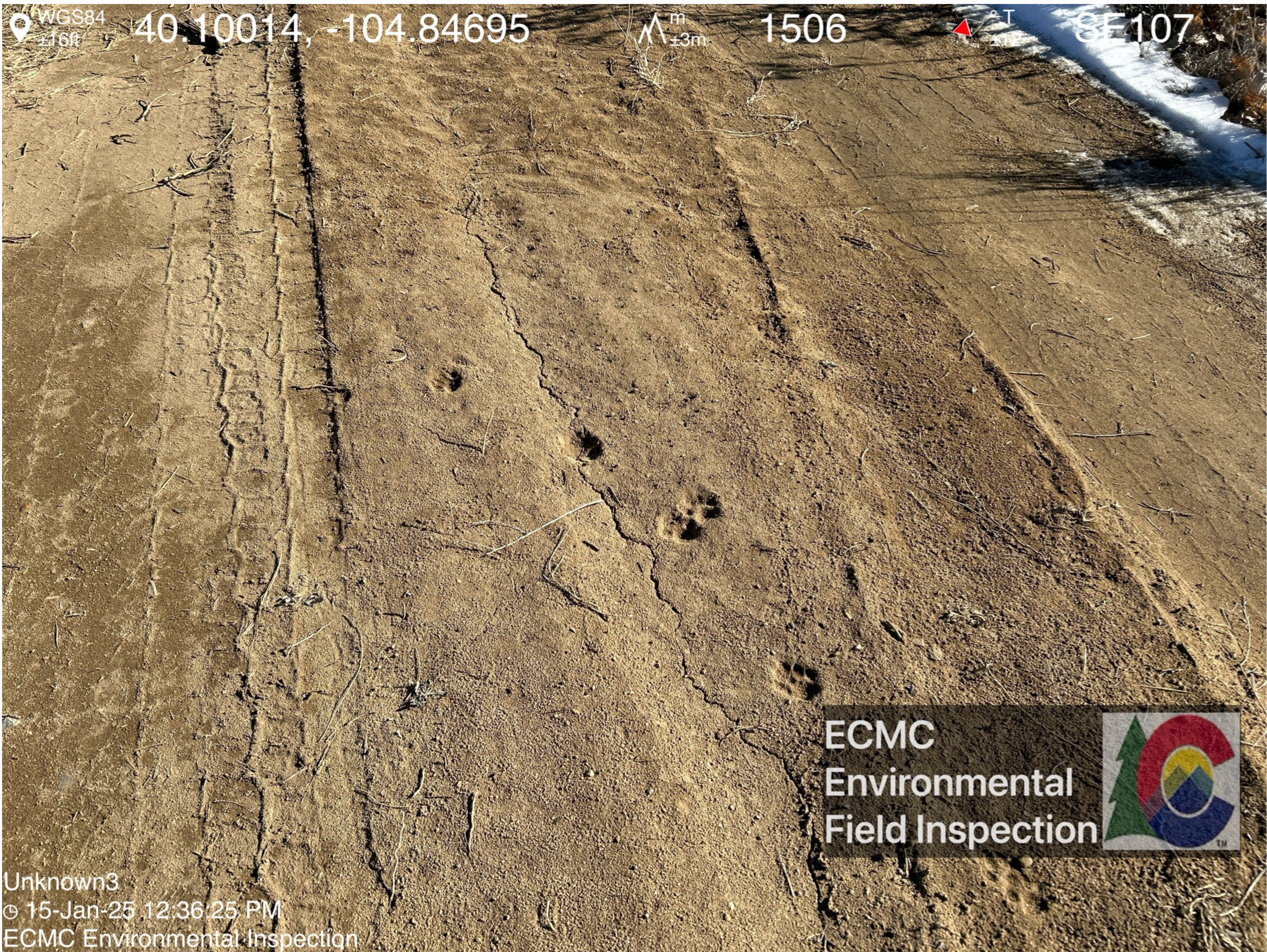


Excavation remains open with orange construction fencing. Soil remains stockpiled with inadequate BMPs.



Wildlife tracks observed.



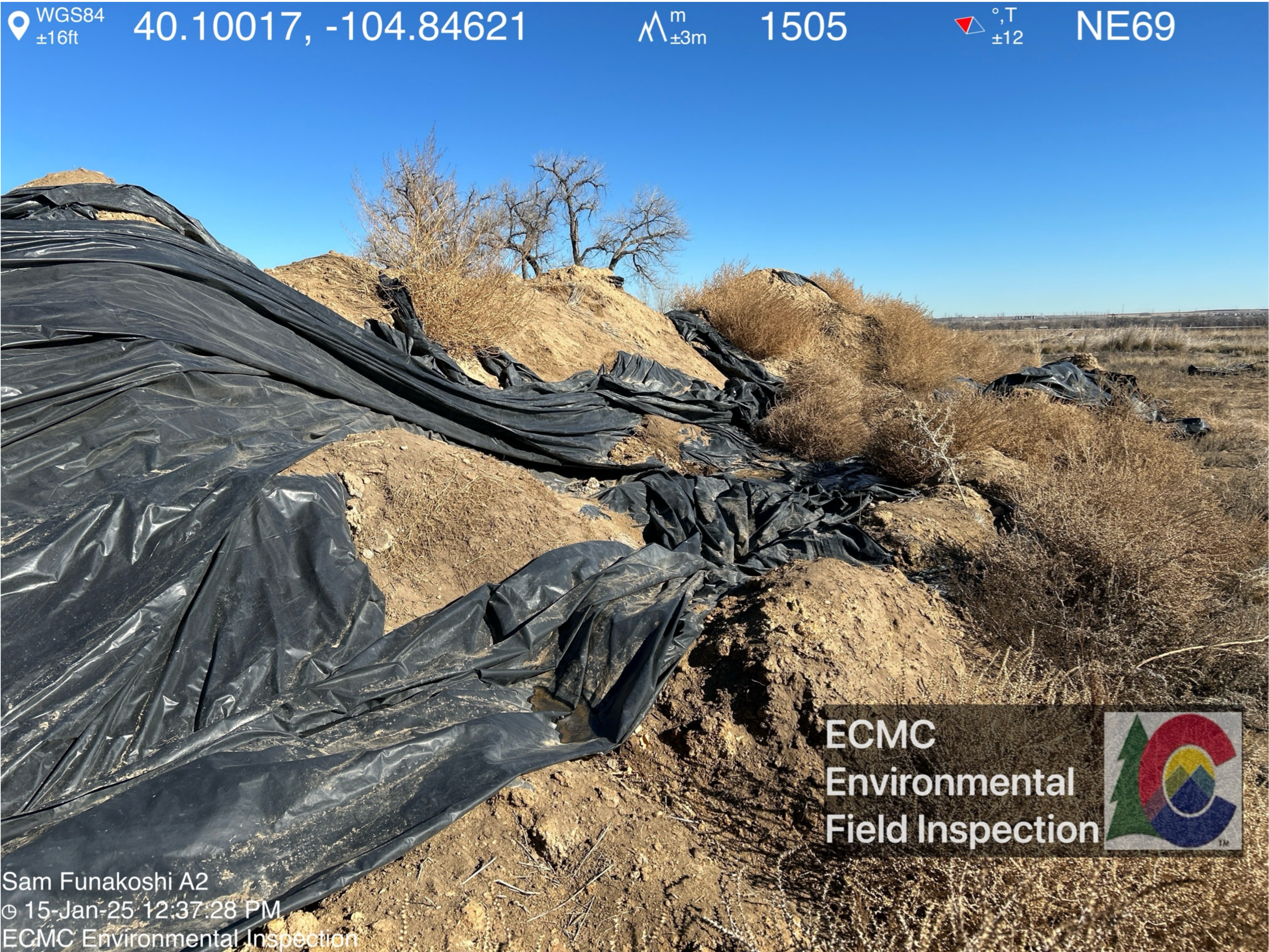
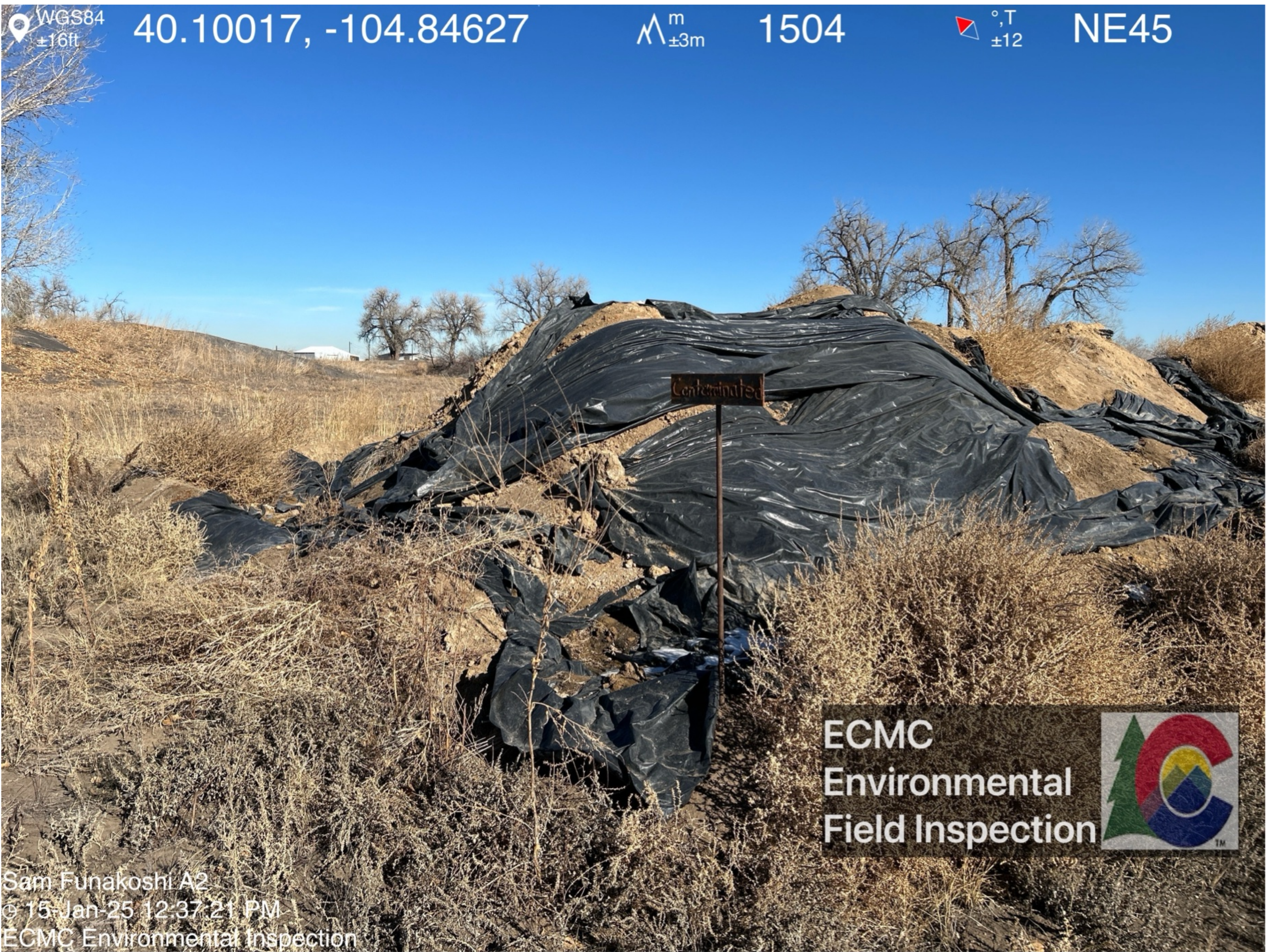


Stockpiled soil is marked "contaminated". E&P waste is not fully contained by the liner.



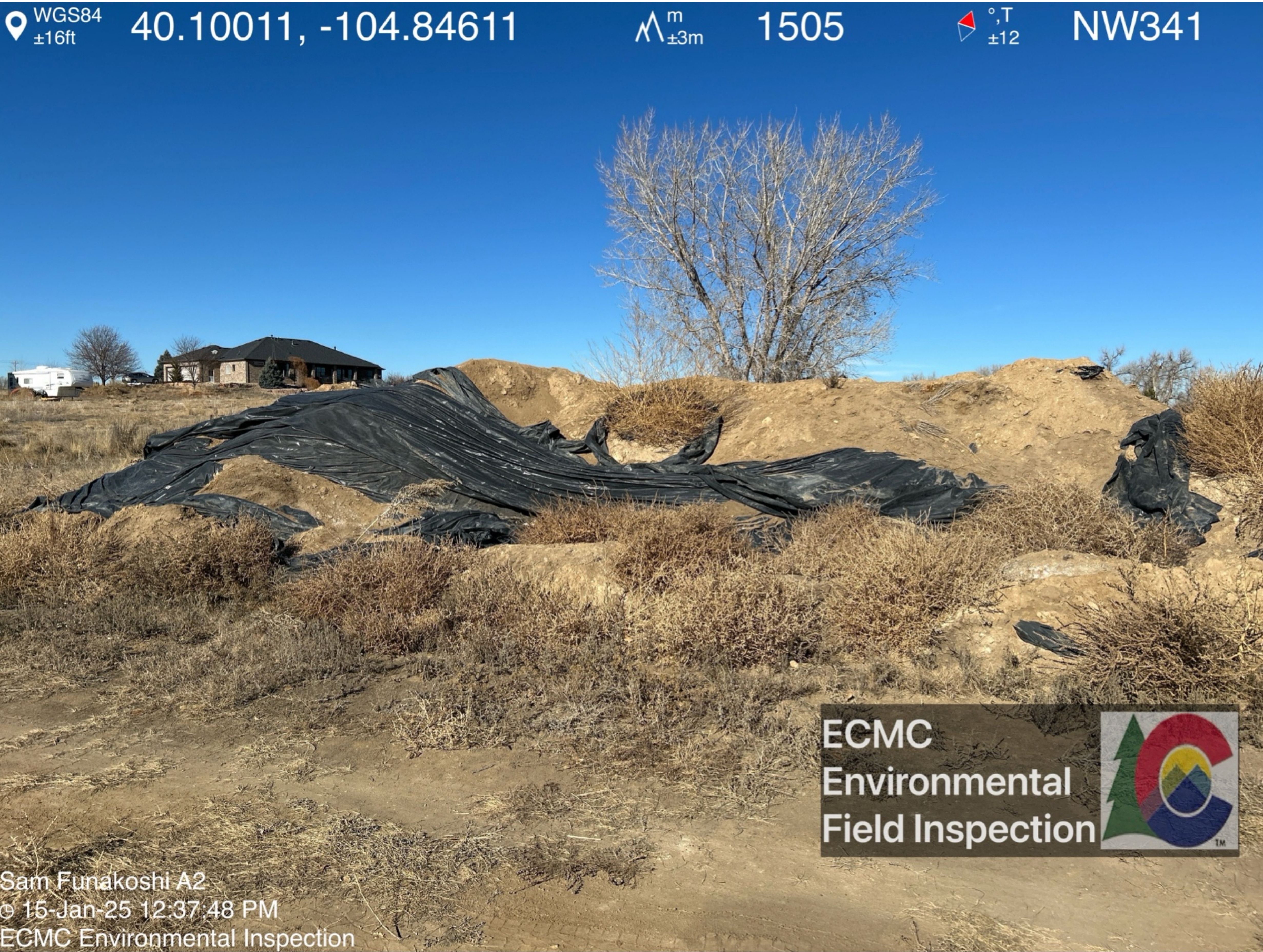


E&P waste has spilled outside of secondary containment. Weeds have grown on the stockpile.





E&P waste has spilled outside of secondary containment. Weeds have grown on the stockpile.





Trash/debris/pieces of torn liner observed.



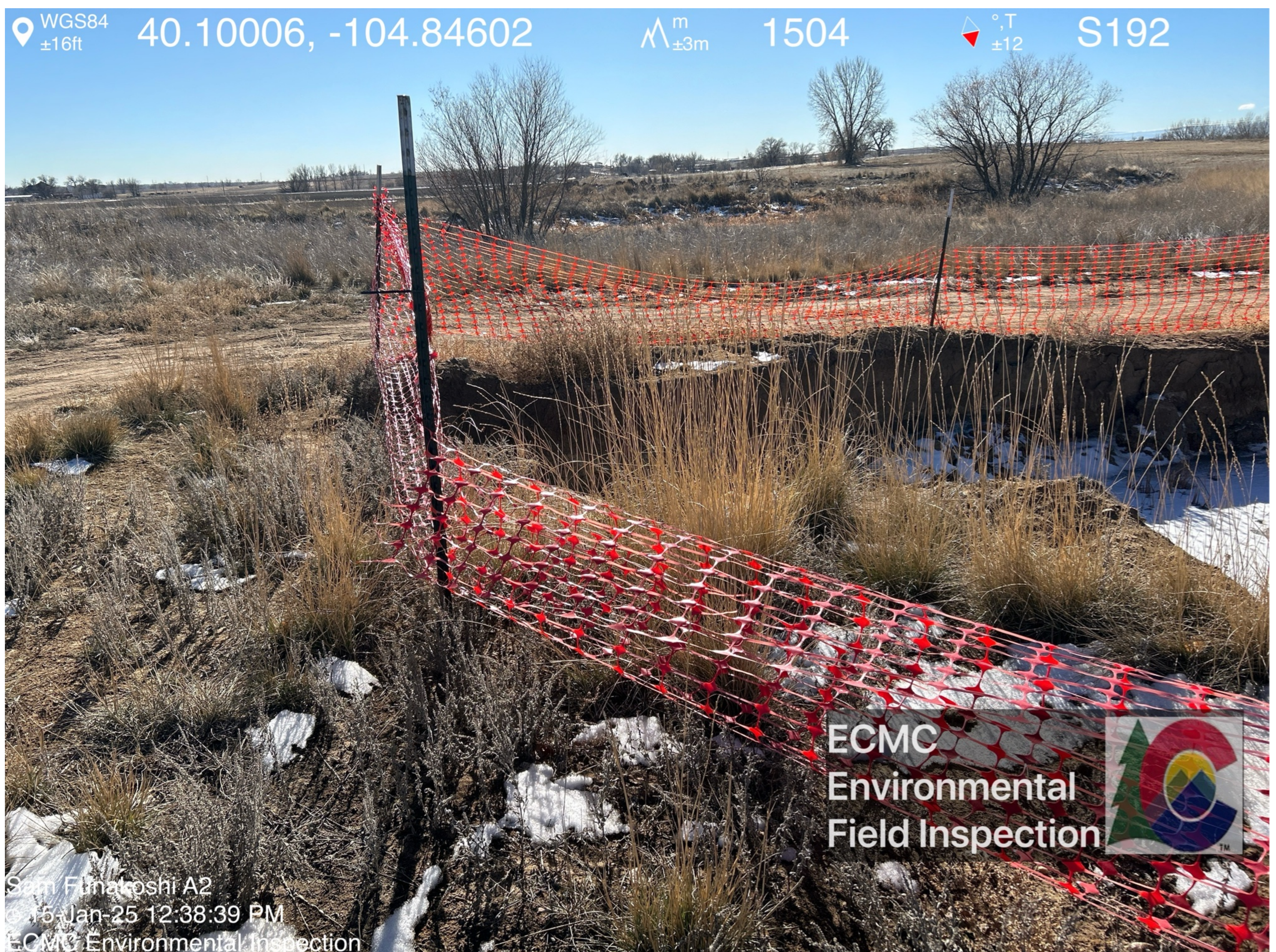
E&P waste is not fully contained by the liner.



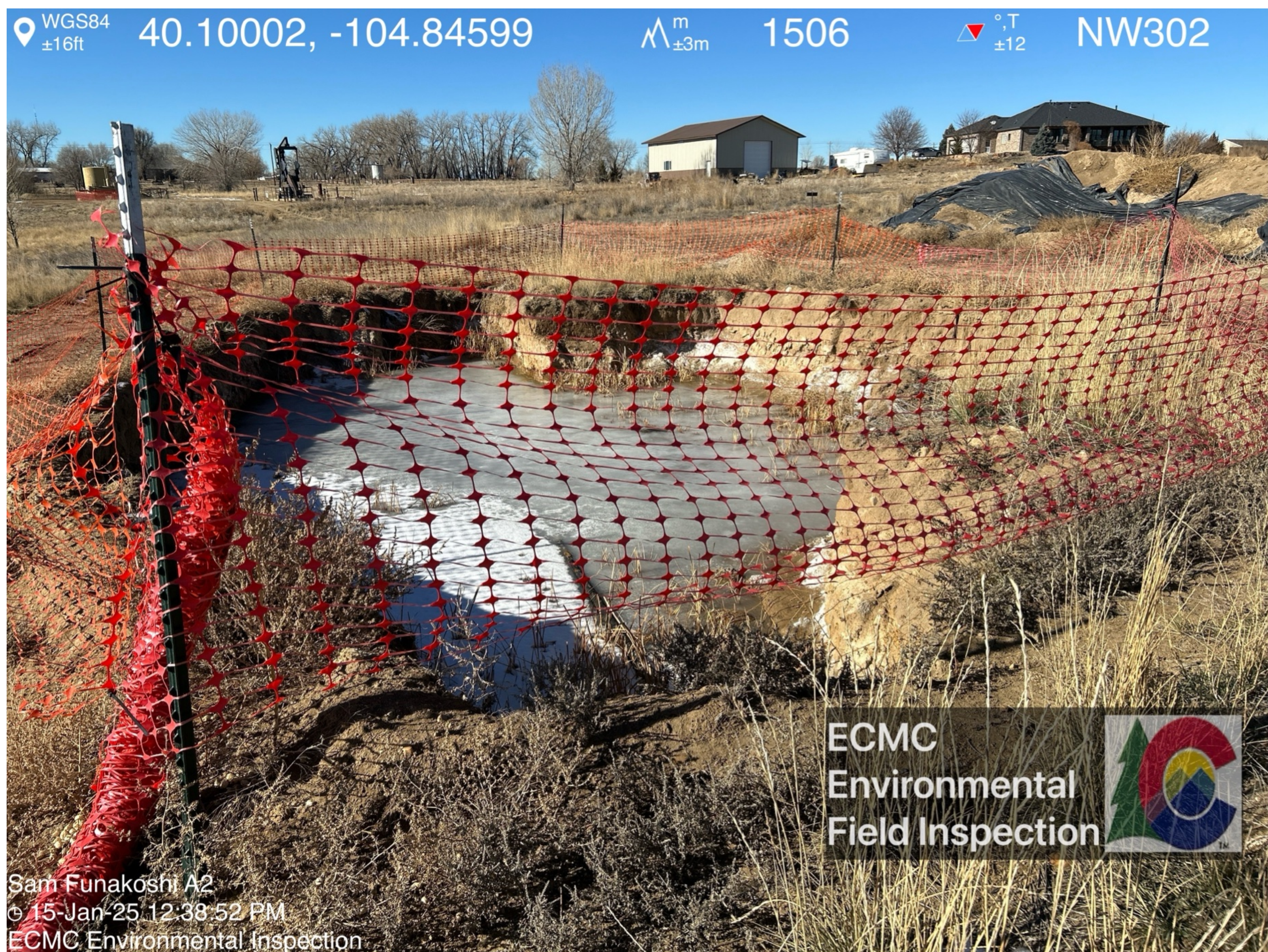




Portions of the orange construction fencing have fallen. Weeds have grown throughout the location.





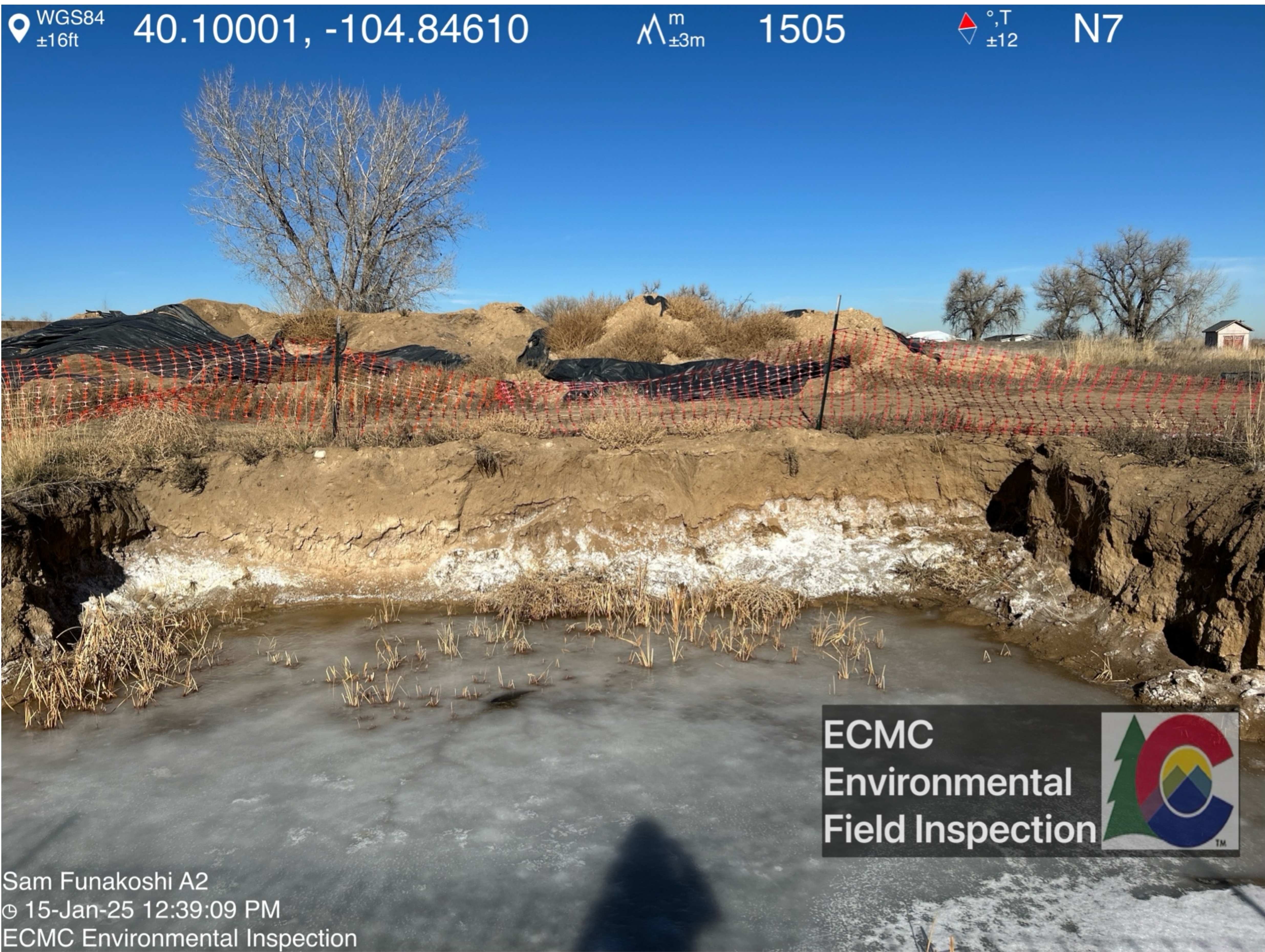


Excavation sidewalls have partially collapsed. Potential salt crusting is visible with the excavation.



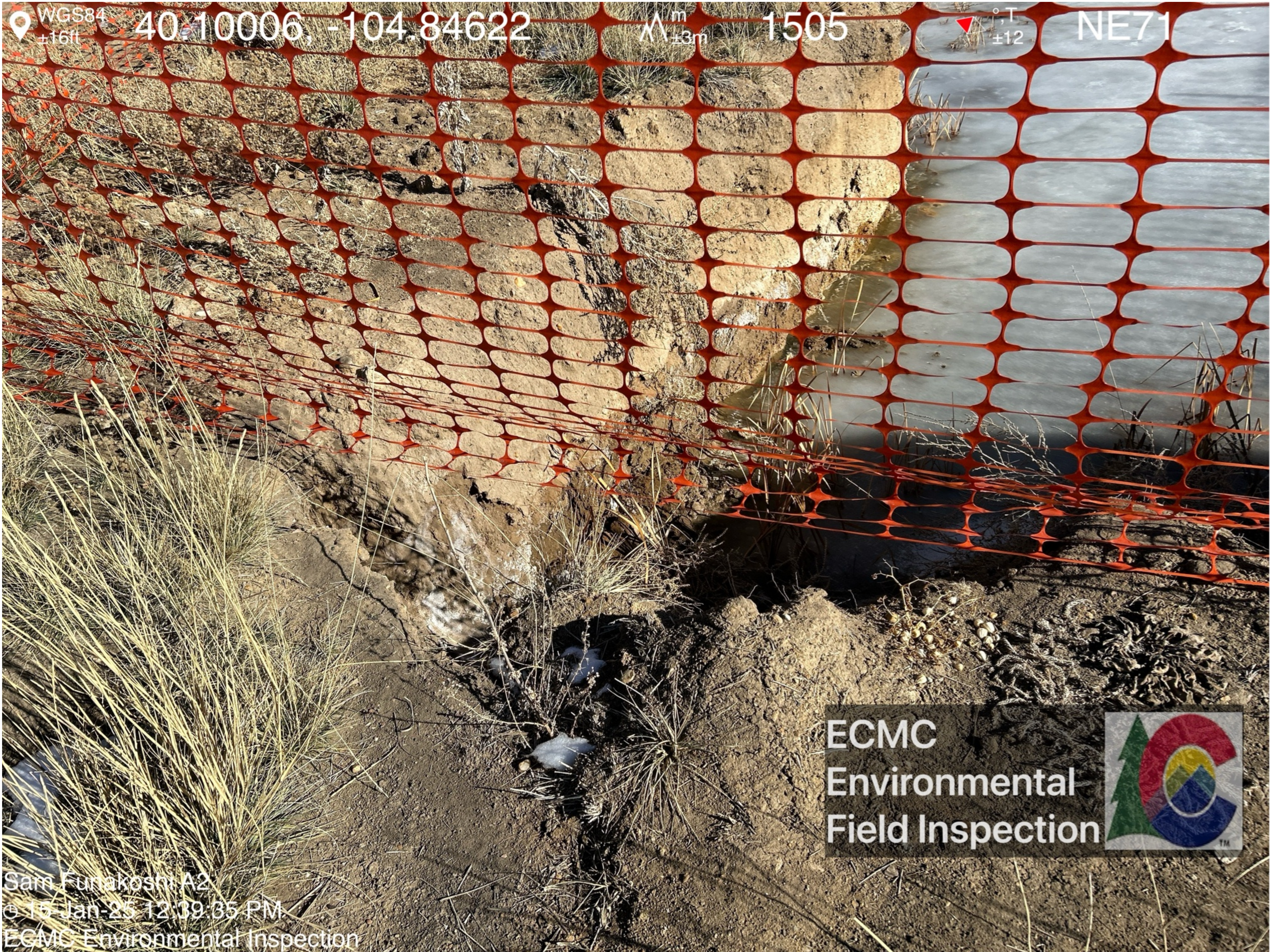
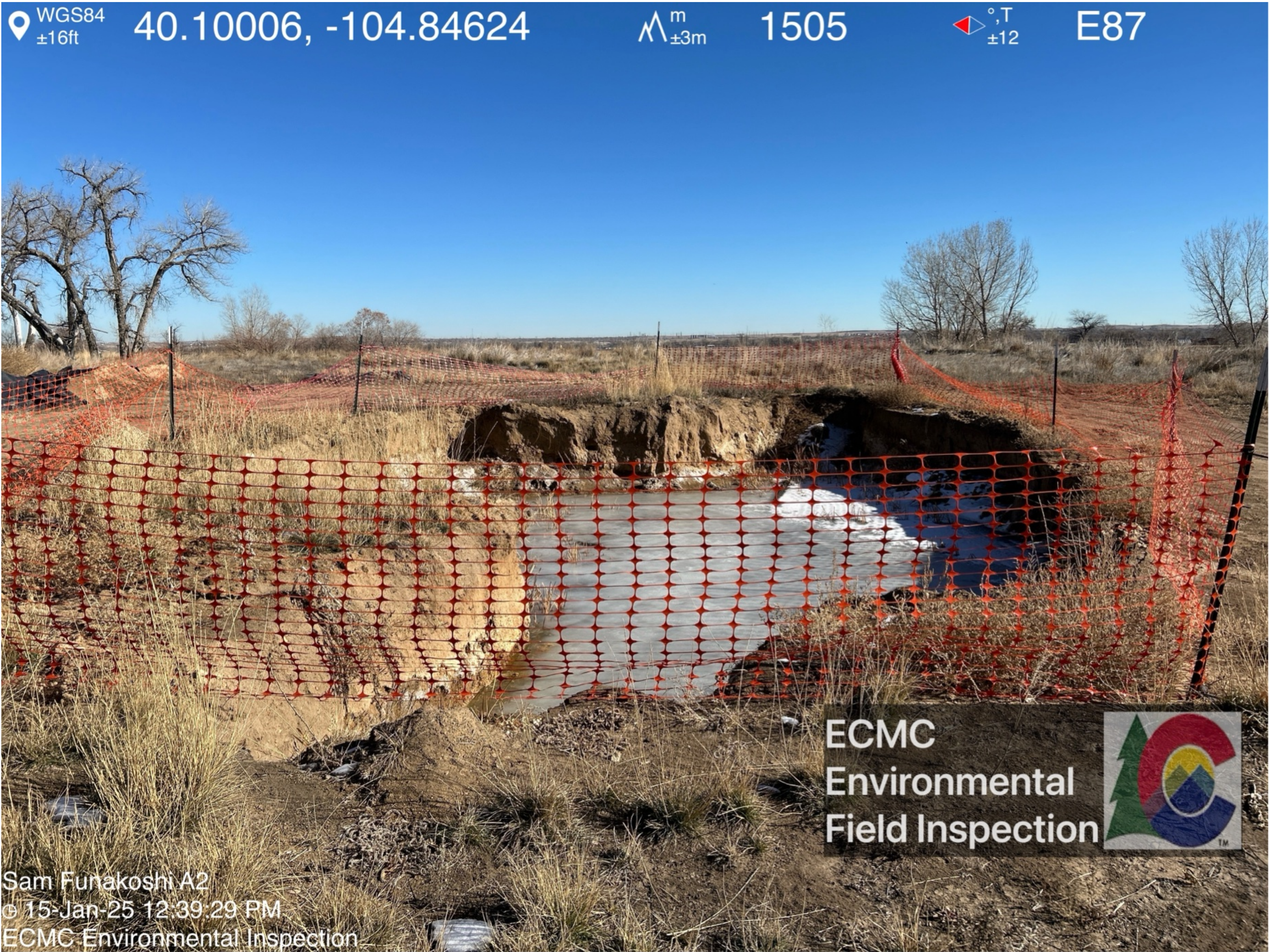


Potential salt crusting is visible with the excavation. Groundwater has frozen. Weeds are growing within the excavation.





Orange construction fencing does not fully encompass the excavation.

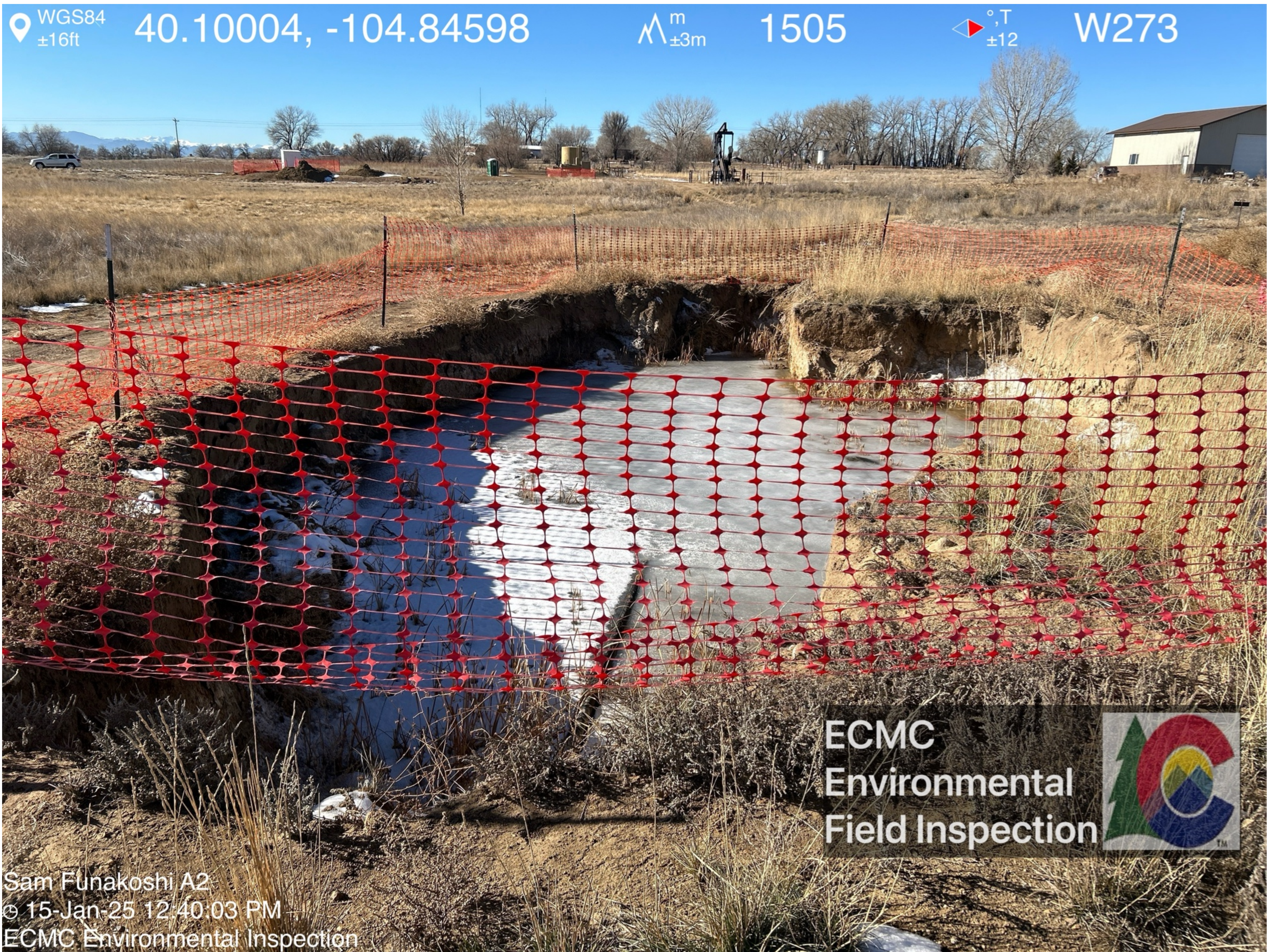




No wildlife protection measures (e.g. netting) were observed.



Orange construction fencing does not fully encompass the excavation.





A portion of the flowline remains exposed.

