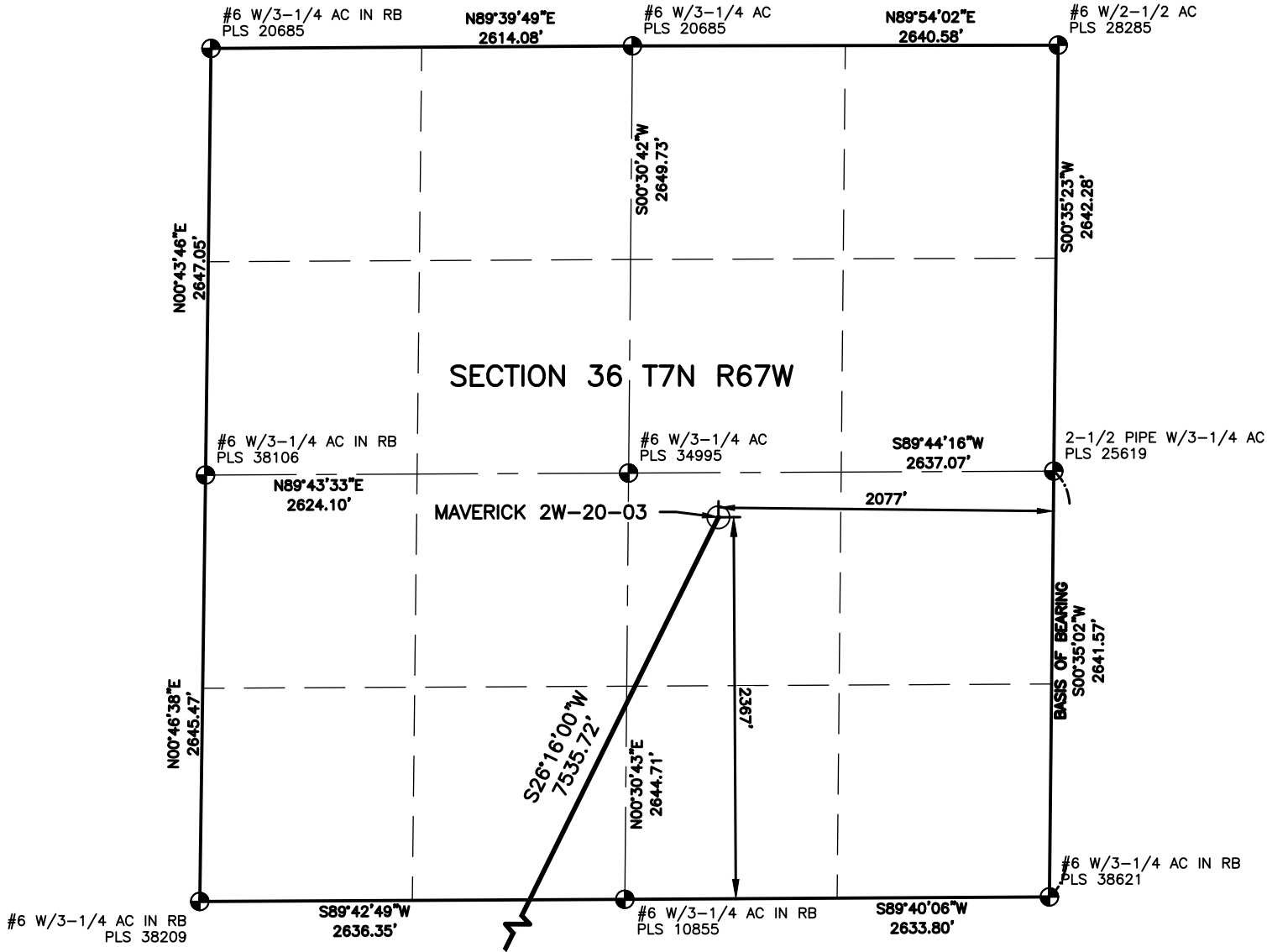
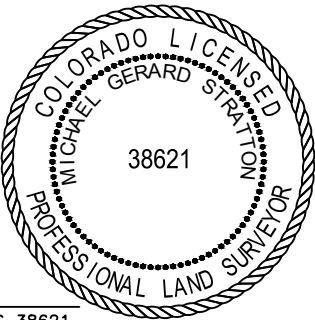


L:\Engineering\0222018 Civitas Inc Man\SURVEY\DRAWINGS\EXHIBITS\WELL PLATS\MAVERICK 2W-20-03.cdw, 1/23/2025 9:13:08 AM, MICHAEL STRATTON, LAMP RYNearson



LAND SURVEYOR'S CERTIFICATION

LAMP RYNearson, INC. OF FT. COLLINS, COLORADO HAS, IN ACCORDANCE WITH A REQUEST FROM TROY OWENS OF EXTRACTION OIL & GAS, DETERMINED THE SURFACE LOCATION OF THE WELL DESIGNATED AS MAVERICK 2W-20-03 TO BE 2367' FROM THE SOUTH LINE AND 2077' FROM THE EAST LINE OF SECTION 36, TOWNSHIP 7 NORTH, RANGE 67 WEST OF THE 6TH P.M., WELD COUNTY, COLORADO.

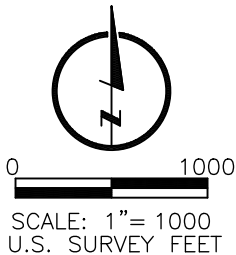


MICHAEL GERARD STRATTON COLORADO PLS 38621
DATE OF SURVEY: 05/30/2023 (SECTION CONTROL)
DATE OF SURVEY: 08/10/2022 (WELL LOCATION)

SURFACE POINT				LANDING POINT				BOTTOM HOLE			
2367'	FSL	2077'	FEL	875'	FSL	100'	FEL	875'	FSL	300'	FEL

SURFACE POINT					LANDING POINT		BOTTOM HOLE		
LATITUDE	LONGITUDE	ELEVATION	PDOP	OPERATOR	LATITUDE	LONGITUDE	LATITUDE	LONGITUDE	
40.529928	-104.839616	4897	3.012	A.CAUWELS	40.511365	-104.851558	40.511403	-104.889917	

- LEGEND**
- COMPUTED ALIQUOT CORNER
 - ALIQUOT CORNER
 - BOTTOM HOLE
 - ALIQUOT WITNESS CORNER
 - LANDING POINT
 - PROPOSED WELL
 - A.C. ALUMINUM CAP
 - R.B. RANGE BOX
 - CONC. CONCRETE
 - I.C.V.B. IRRIGATION CONTROL VALVE BOX



BASIS OF BEARING:

THE EAST LINE OF THE SOUTHEAST QUARTER OF SECTION 36-T7N-R67W BEARS S00°35'02"W FOR A DISTANCE OF 2641.57' FEET BETWEEN THE EAST QUARTER CORNER OF SECTION 36 MONUMENTED BY A 2-1/2" PIPE WITH A 3-1/4" ALUMINUM CAP STAMPED, "PLS 25619", AND AT THE SOUTHEAST CORNER OF SECTION 36, MONUMENTED BY A #6 REBAR WITH A 3-1/4" ALUMINUM CAP STAMPED, "PLS 38621", BASED ON A LOW DISTORTION PROJECTION DEVELOPED BY LAMP RYNearson USING THE NORTH AMERICAN DATUM OF 1983(2011).

NOTES:

- DISTANCES ARE MEASURED PERPENDICULAR TO NEAREST SECTION LINE AND ARE SHOWN ON THE SAME SIDE OF THE SECTION LINE WHERE THE WELL IS LOCATED.
- THIS MAP DOES NOT REPRESENT A MONUMENTED BOUNDARY SURVEY. SIXTEENTH CORNER LOCATIONS ARE COMPUTED, UNLESS OTHERWISE NOTED.
- BOTTOM HOLE LOCATIONS AND HORIZONTAL COMPLETION ZONE PROVIDED BY OTHERS.
- ALL REBAR AND CAPS ARE MEASURED IN INCHES.
- ELEVATIONS ARE BASED ON THE NORTH AMERICAN VERTICAL DATUM OF 1988 AS MEASURED BY GNSS OBSERVATIONS USING GEOID 18.

LAMP
RYNEARSON

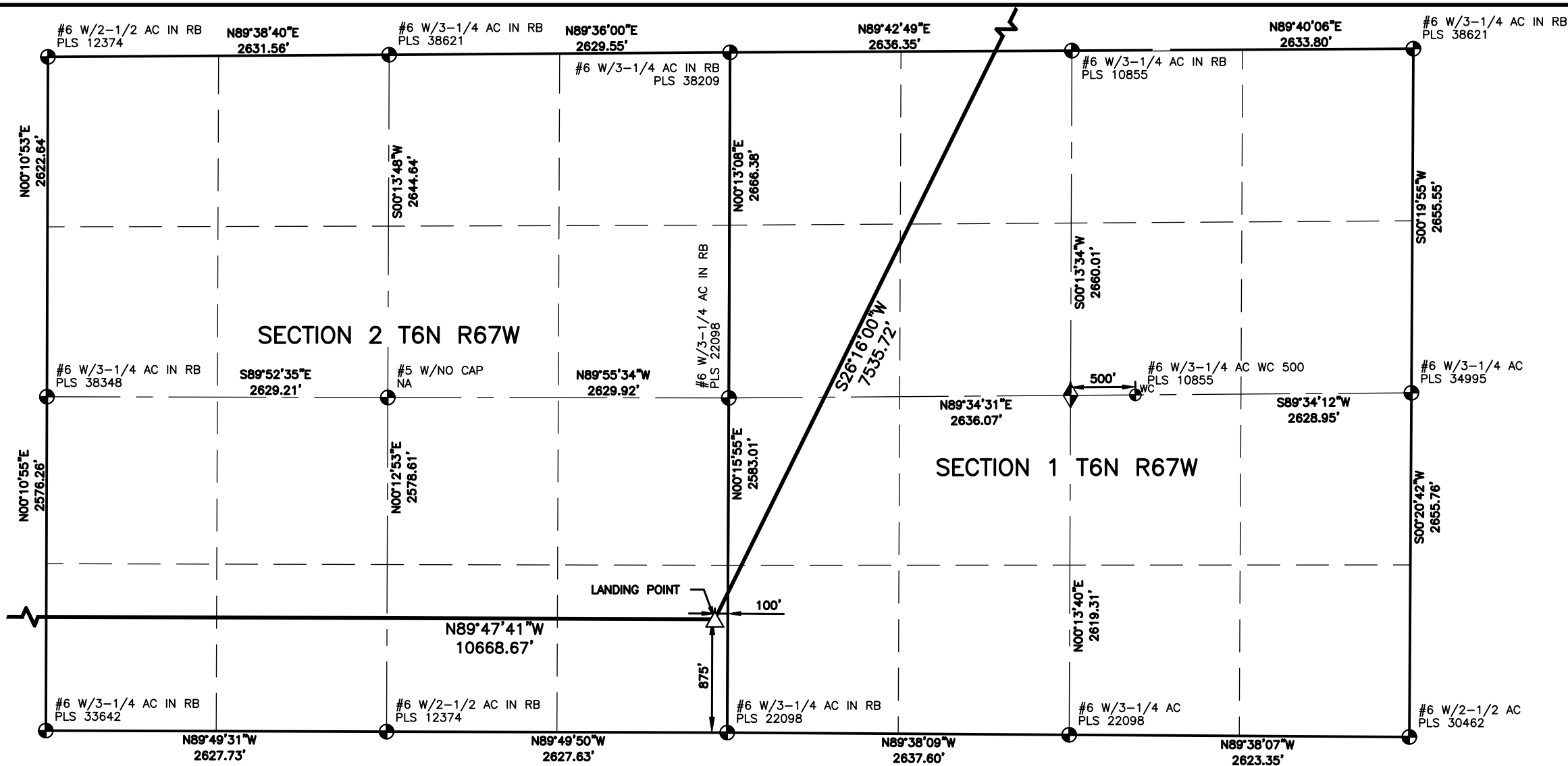
LAMP RYNearson.COM



DESIGNER / DRAFTER
JOSH CROAK
REVIEWER
MICHAEL STRATTON
PROJECT NUMBER
0222018.01
DATE
1/23/2025
SURFACE LOCATION
NW/4 SE/4 S36, T7N, R67W
BOOK AND PAGE
SHEET 1 OF 3

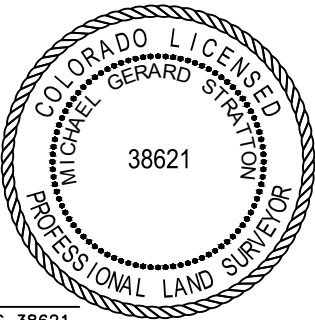
WELL LOCATION PLAT
EXTRACTION OIL & GAS
MAVERICK 2W-20-03

L:\Engineering\0222018 Civitas Inc Man\SURVEY\DRAWINGS\EXHIBITS\WELL PLATS\MAVERICK 2W-20-03.cdwg, 1/23/2025 9:13:12 AM, MICHAEL STRATTON, LAMP RYNearson



LAND SURVEYOR'S CERTIFICATION

LAMP RYNearson, INC. OF FT. COLLINS, COLORADO HAS, IN ACCORDANCE WITH A REQUEST FROM TROY OWENS OF EXTRACTION OIL & GAS, DETERMINED THE SURFACE LOCATION OF THE WELL DESIGNATED AS MAVERICK 2W-20-03 TO BE 2367' FROM THE SOUTH LINE AND 2077' FROM THE EAST LINE OF SECTION 36, TOWNSHIP 7 NORTH, RANGE 67 WEST OF THE 6TH P.M., WELD COUNTY, COLORADO.



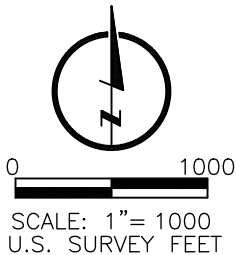
MICHAEL GERARD STRATTON COLORADO PLS 38621
DATE OF SURVEY: 05/30/2023 (SECTION CONTROL)
DATE OF SURVEY: 08/10/2022 (WELL LOCATION)

SURFACE POINT				LANDING POINT				BOTTOM HOLE			
2367'	FSL	2077'	FEL	875'	FSL	100'	FEL	875'	FSL	300'	FEL

SURFACE POINT					LANDING POINT		BOTTOM HOLE		
LATITUDE	LONGITUDE	ELEVATION	PDOP	OPERATOR	LATITUDE	LONGITUDE	LATITUDE	LONGITUDE	
40.529928	-104.839616	4897	3.012	A.CAUWELS	40.511365	-104.851558	40.511403	-104.889917	

- LEGEND**
- COMPUTED ALIQUOT CORNER
 - ALIQUOT CORNER
 - BOTTOM HOLE
 - ALIQUOT WITNESS CORNER
 - LANDING POINT
 - PROPOSED WELL
 - A.C. ALUMINUM CAP
 - R.B. RANGE BOX
 - CONC. CONCRETE
 - I.C.V.B. IRRIGATION CONTROL VALVE BOX

BASIS OF BEARING:
THE EAST LINE OF THE SOUTHEAST QUARTER OF SECTION 36-T7N-R67W BEARS S00°35'02"W FOR A DISTANCE OF 2641.57' FEET BETWEEN THE EAST QUARTER CORNER OF SECTION 36 MONUMENTED BY A 2-1/2" PIPE WITH A 3-1/4" ALUMINUM CAP STAMPED, "PLS 25619", AND AT THE SOUTHEAST CORNER OF SECTION 36, MONUMENTED BY A #6 REBAR WITH A 3-1/4" ALUMINUM CAP STAMPED, "PLS 38621", BASED ON A LOW DISTORTION PROJECTION DEVELOPED BY LAMP RYNearson USING THE NORTH AMERICAN DATUM OF 1983(2011).



- NOTES:**
- DISTANCES ARE MEASURED PERPENDICULAR TO NEAREST SECTION LINE AND ARE SHOWN ON THE SAME SIDE OF THE SECTION LINE WHERE THE WELL IS LOCATED.
 - THIS MAP DOES NOT REPRESENT A MONUMENTED BOUNDARY SURVEY. SIXTEENTH CORNER LOCATIONS ARE COMPUTED, UNLESS OTHERWISE NOTED.
 - BOTTOM HOLE LOCATIONS AND HORIZONTAL COMPLETION ZONE PROVIDED BY OTHERS.
 - ALL REBAR AND CAPS ARE MEASURED IN INCHES.
 - ELEVATIONS ARE BASED ON THE NORTH AMERICAN VERTICAL DATUM OF 1988 AS MEASURED BY GNSS OBSERVATIONS USING GEOID 18.

LAMP RYNearson

LAMP RYNearson.COM



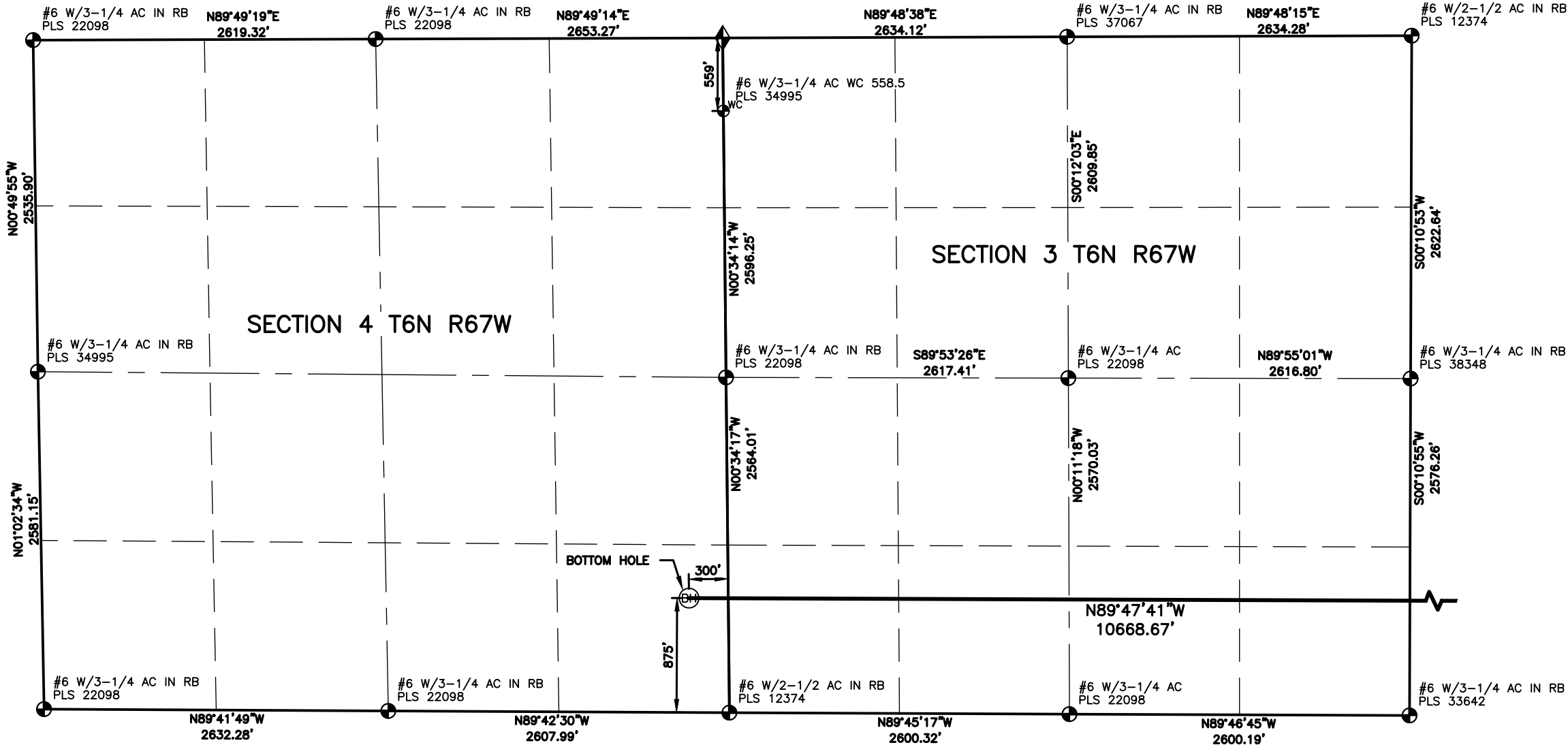
DESIGNER / DRAFTER
JOSH CROAK
REVIEWER
MICHAEL STRATTON
PROJECT NUMBER
0222018.01
DATE
1/23/2025
SURFACE LOCATION
NW/4 SE/4 S36, T7N, R67W
BOOK AND PAGE
SHEET 2 OF 3

WELL LOCATION PLAT

EXTRACTION OIL & GAS

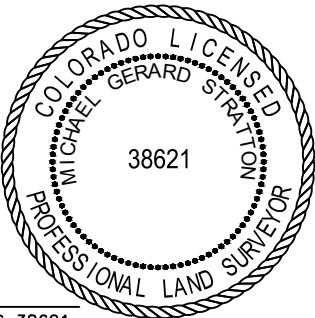
MAVERICK 2W-20-03

L:\Engineering\0222018 CIVITAS\Drawings\EXHIBITS\WELL PLATS\MAVERICK 2W-20-03.dwg, 1/23/2025 9:13:17 AM, MICHAEL STRATTON, LAMP RYNearson



LAND SURVEYOR'S CERTIFICATION

LAMP RYNearson, INC. OF FT. COLLINS, COLORADO HAS, IN ACCORDANCE WITH A REQUEST FROM TROY OWENS OF EXTRACTION OIL & GAS, DETERMINED THE SURFACE LOCATION OF THE WELL DESIGNATED AS MAVERICK 2W-20-03 TO BE 2367' FROM THE SOUTH LINE AND 2077' FROM THE EAST LINE OF SECTION 36, TOWNSHIP 7 NORTH, RANGE 67 WEST OF THE 6TH P.M., WELD COUNTY, COLORADO.



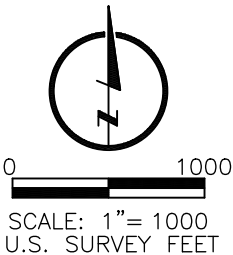
MICHAEL GERARD STRATTON COLORADO PLS 38621
DATE OF SURVEY: 05/30/2023 (SECTION CONTROL)
DATE OF SURVEY: 08/10/2022 (WELL LOCATION)

SURFACE POINT				LANDING POINT				BOTTOM HOLE			
2367'	FSL	2077'	FEL	875'	FSL	100'	FEL	875'	FSL	300'	FEL

SURFACE POINT					LANDING POINT		BOTTOM HOLE		
LATITUDE	LONGITUDE	ELEVATION	PDOP	OPERATOR	LATITUDE	LONGITUDE	LATITUDE	LONGITUDE	
40.529928	-104.839616	4897	3.012	A.CAUWELS	40.511365	-104.851558	40.511403	-104.889917	

- LEGEND**
- COMPUTED ALIQUOT CORNER
 - ALIQUOT CORNER
 - BOTTOM HOLE
 - ALIQUOT WITNESS CORNER
 - LANDING POINT
 - PROPOSED WELL
 - A.C. ALUMINUM CAP
 - R.B. RANGE BOX
 - CONC. CONCRETE
 - I.C.V.B. IRRIGATION CONTROL VALVE BOX

BASIS OF BEARING:
THE EAST LINE OF THE SOUTHEAST QUARTER OF SECTION 36-T7N-R67W BEARS S00°35'02"W FOR A DISTANCE OF 2641.57' FEET BETWEEN THE EAST QUARTER CORNER OF SECTION 36 MONUMENTED BY A 2-1/2" PIPE WITH A 3-1/4" ALUMINUM CAP STAMPED, "PLS 25619", AND AT THE SOUTHEAST CORNER OF SECTION 36, MONUMENTED BY A #6 REBAR WITH A 3-1/4" ALUMINUM CAP STAMPED, "PLS 38621", BASED ON A LOW DISTORTION PROJECTION DEVELOPED BY LAMP RYNearson USING THE NORTH AMERICAN DATUM OF 1983(2011).



- NOTES:**
- DISTANCES ARE MEASURED PERPENDICULAR TO NEAREST SECTION LINE AND ARE SHOWN ON THE SAME SIDE OF THE SECTION LINE WHERE THE WELL IS LOCATED.
 - THIS MAP DOES NOT REPRESENT A MONUMENTED BOUNDARY SURVEY. SIXTEENTH CORNER LOCATIONS ARE COMPUTED, UNLESS OTHERWISE NOTED.
 - BOTTOM HOLE LOCATIONS AND HORIZONTAL COMPLETION ZONE PROVIDED BY OTHERS.
 - ALL REBAR AND CAPS ARE MEASURED IN INCHES.
 - ELEVATIONS ARE BASED ON THE NORTH AMERICAN VERTICAL DATUM OF 1988 AS MEASURED BY GNSS OBSERVATIONS USING GEOID 18.

LAMP RYNearson

LAMP RYNearson.COM



DESIGNER / DRAFTER
JOSH CROAK
REVIEWER
MICHAEL STRATTON
PROJECT NUMBER
0222018.01
DATE
1/23/2025
SURFACE LOCATION
NW/4 SE/4 S36, T7N, R67W
BOOK AND PAGE
SHEET 3 OF 3

WELL LOCATION PLAT

EXTRACTION OIL & GAS

MAVERICK 2W-20-03