

# **EXTRACTION OIL & GAS**

**WELD COUNTY**

**Sec 36-T7N-R67W**

**MAVERICK 2W-20-04**

**OWB**

**Plan: PROPOSAL 1**

## **Standard Planning Report**

**23 January, 2025**



Project: WELD COUNTY  
Site: Sec 36-T7N-R67W  
Well: MAVERICK 2W-20-04  
Wellbore: OWB  
Design: PROPOSAL 1



Azimuths to True North  
Magnetic North: 7.54°  
Magnetic Field  
Strength: 51644.1nT  
Dip Angle: 66.60°  
Date: 12/17/2024  
Model: IGRF2020

#### WELL DETAILS: MAVERICK 2W-20-04

4896.00					
+N/-S	+E/-W	Northing	Easting	Latitude	Longitude
0.00	0.00	1436583.72	3183591.22	40.529946°N	104.839538°W

#### SECTION DETAILS

Sec	MD	Inc	Azi	TVD	+N/-S	+E/-W	Dleg	TFace	VSec	Target
1	0.00	0.00	0.00	0.00	0.00	0.00	0.00	0.00	0.00	
2	100.00	0.00	0.00	100.00	0.00	0.00	0.00	0.00	0.00	
3	2853.69	55.07	202.21	2448.81	-1133.79	-462.88	2.00	202.21	927.90	
4	10388.41	55.07	202.21	6762.58	-6853.16	-2797.87	0.00	0.00	5608.68	
5	11108.62	90.00	270.09	7001.00	-7168.60	-3343.36	10.00	76.90	6237.95	LP-MAVERICK 2W-20-04
6	21768.56	90.00	270.09	7001.00	-7151.42	-14003.29	0.00	0.00	15723.71	PBHL-MAVERICK 2W-20-04N

#### ANNOTATIONS

MD	Inc	Azi	TVD	+N/-S	+E/-W	VSec	Departure	Annotation
100.00	0.00	0.00	100.00	0.00	0.00	0.00	0.00	Start Build 2.00
2853.69	55.07	202.21	2448.81	-1133.79	-462.88	927.90	1224.64	Start 7534.72 hold at 2853.69 MD
10388.41	55.07	202.21	6762.58	-6853.16	-2797.87	5608.68	7402.29	Start DLS 10.00 TFO 76.90
11108.62	90.00	270.09	7001.00	-7168.60	-3343.36	6237.95	8069.36	Start 10659.94 hold at 11108.62 MD
21768.56	90.00	270.09	7001.00	-7151.42	-14003.29	15723.71	18729.31	TD at 21768.56

#### DESIGN TARGET DETAILS

Name	TVD	+N/-S	+E/-W	Northing	Easting	Latitude	Longitude	Shape
LP-MAVERICK 2W-20-04	7001.00	-7168.60	-3343.36	1429390.42	3180301.34	40.510268°N	104.851562°W	Point
- plan hits target center								
PBHL-MAVERICK 2W-20-04N	7001.00	-7151.42	-14003.29	1429328.20	3169641.58	40.510305°N	104.889899°W	Point
- plan hits target center								

#### FORMATION TOP DETAILS

TVDPath	MDPath	Formation
24.00	24.00	Laramie-Fox Hills Formation
196.00	196.02	Pierre Formation
471.00	472.04	Upper Pierre aquifer
1381.00	1428.06	Base of Upper Pierre aquifer
3716.00	5067.05	Larimer ("Parkman") sandstone
4011.00	5582.31	Pierre Formation
4201.00	5914.18	Terry ("Sussex") sandstone
4471.00	6385.78	Pierre Formation
4781.00	6927.25	Hygiene ("Shannon") sandstone
5016.00	7337.71	Pierre Formation
6961.00	10829.92	Sharon Springs Member
7001.00	11108.62	Niobrara Formation

#### PROJECT DETAILS: WELD COUNTY

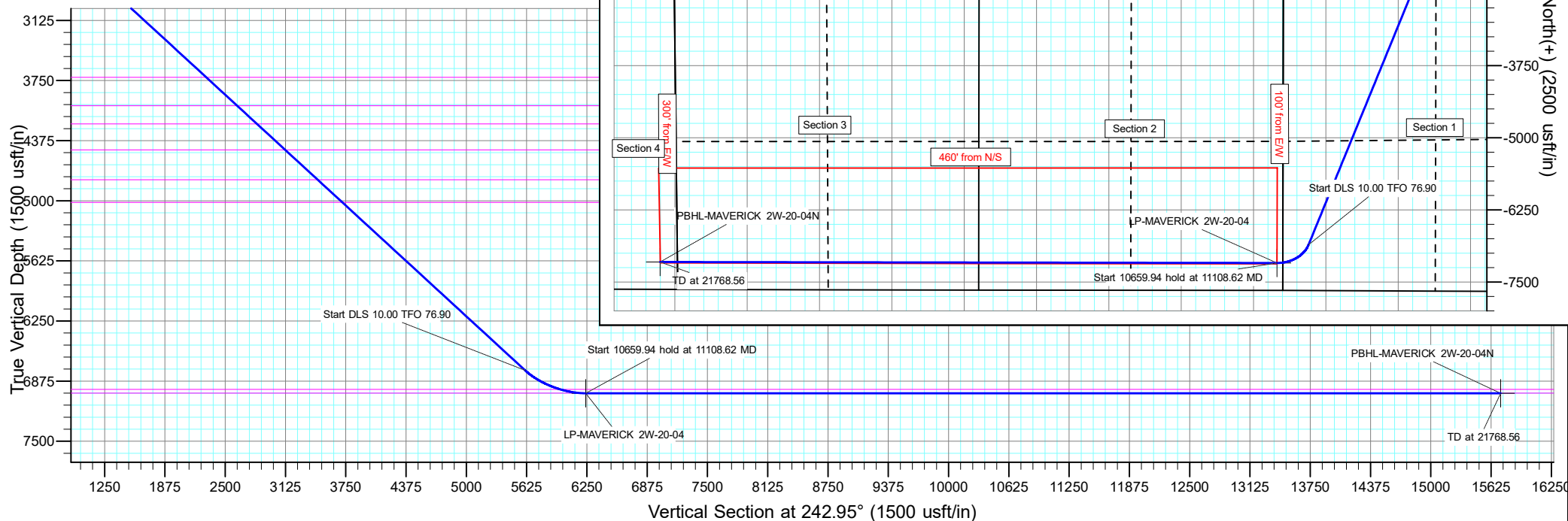
Geodetic System: US State Plane 1983  
Datum: North American Datum 1983  
Ellipsoid: GRS 1980  
Zone: Colorado Northern Zone

System Datum: Mean Sea Level

SHL:  
2373' FSL, 2056' FEL  
Sec 36-T7N-R67W

LP:  
475' FSL, 100' FEL  
Sec 2-T6N-R67W

BHL:  
475' FSL, 300' FEL  
Sec 4-T6N-R67W



# Civitas Resources

## Planning Report

<b>Database:</b>	EDM	<b>Local Co-ordinate Reference:</b>	Well MAVERICK 2W-20-04
<b>Company:</b>	EXTRACTION OIL & GAS	<b>TVD Reference:</b>	KBE 25' @ 4921.00usft
<b>Project:</b>	WELD COUNTY	<b>MD Reference:</b>	KBE 25' @ 4921.00usft
<b>Site:</b>	Sec 36-T7N-R67W	<b>North Reference:</b>	True
<b>Well:</b>	MAVERICK 2W-20-04	<b>Survey Calculation Method:</b>	Minimum Curvature
<b>Wellbore:</b>	OWB		
<b>Design:</b>	PROPOSAL 1		

<b>Project</b>	WELD COUNTY		
<b>Map System:</b>	US State Plane 1983	<b>System Datum:</b>	Mean Sea Level
<b>Geo Datum:</b>	North American Datum 1983		
<b>Map Zone:</b>	Colorado Northern Zone		

Site		Sec 36-T7N-R67W			
Site Position:		Northing:	1,434,164.62 usft	Latitude:	40.523371°N
From:	Lat/Long	Easting:	3,180,376.52 usft	Longitude:	104.851166°W
Position Uncertainty:	0.00 usft	Slot Radius:	13.200 in	Grid Convergence:	0.42 °

Well	MAVERICK 2W-20-04					
Well Position	+N/-S	2,395.52 usft	Northing:	1,436,583.72 usft	Latitude:	40.529946°N
	+E/-W	3,232.31 usft	Easting:	3,183,591.22 usft	Longitude:	104.839538°W
Position Uncertainty		0.00 usft	Wellhead Elevation:		Ground Level:	4,896.00 usft

<b>Wellbore</b>	OWB				
<b>Magnetics</b>	<b>Model Name</b>	<b>Sample Date</b>	<b>Declination (°)</b>	<b>Dip Angle (°)</b>	<b>Field Strength (nT)</b>
	IGRF2020	12/17/2024	7.54	66.60	51,644.14860986

<b>Design</b>	PROPOSAL 1			
<b>Audit Notes:</b>				
<b>Version:</b>	<b>Phase:</b>	PROTOTYPE	<b>Tie On Depth:</b>	0.00
<b>Vertical Section:</b>	<b>Depth From (TVD) (usft)</b>	<b>+N/-S (usft)</b>	<b>+E/-W (usft)</b>	<b>Direction (°)</b>
	0.00	0.00	0.00	242.95

<b>Plan Survey Tool Program</b>	<b>Date</b>	1/23/2025		
<b>Depth From (usft)</b>	<b>Depth To (usft)</b>	<b>Survey (Wellbore)</b>	<b>Tool Name</b>	<b>Remarks</b>
1	0.00	21,768.56	PROPOSAL 1 (OWB)	MWD OWSG
				OWSG MWD - Standard

<b>Plan Sections</b>										
<b>Measured Depth (usft)</b>	<b>Inclination (°)</b>	<b>Azimuth (°)</b>	<b>Vertical Depth (usft)</b>	<b>+N/-S (usft)</b>	<b>+E/-W (usft)</b>	<b>Dogleg Rate (°/100ft)</b>	<b>Build Rate (°/100ft)</b>	<b>Turn Rate (°/100ft)</b>	<b>TFO (°)</b>	<b>Target</b>
0.00	0.00	0.00	0.00	0.00	0.00	0.00	0.00	0.00	0.00	
100.00	0.00	0.00	100.00	0.00	0.00	0.00	0.00	0.00	0.00	
2,853.69	55.07	202.21	2,448.81	-1,133.79	-462.88	2.00	2.00	0.00	202.21	
10,388.41	55.07	202.21	6,762.58	-6,853.16	-2,797.87	0.00	0.00	0.00	0.00	
11,108.62	90.00	270.09	7,001.00	-7,168.60	-3,343.36	10.00	4.85	9.43	76.90	LP-MAVERICK 2W-20
21,768.56	90.00	270.09	7,001.00	-7,151.42	-14,003.29	0.00	0.00	0.00	0.00	PBHL-MAVERICK 2W

# Civitas Resources

## Planning Report

<b>Database:</b>	EDM	<b>Local Co-ordinate Reference:</b>	Well MAVERICK 2W-20-04
<b>Company:</b>	EXTRACTION OIL & GAS	<b>TVD Reference:</b>	KBE 25' @ 4921.00usft
<b>Project:</b>	WELD COUNTY	<b>MD Reference:</b>	KBE 25' @ 4921.00usft
<b>Site:</b>	Sec 36-T7N-R67W	<b>North Reference:</b>	True
<b>Well:</b>	MAVERICK 2W-20-04	<b>Survey Calculation Method:</b>	Minimum Curvature
<b>Wellbore:</b>	OWB		
<b>Design:</b>	PROPOSAL 1		

Planned Survey									
Measured Depth (usft)	Inclination (°)	Azimuth (°)	Vertical Depth (usft)	+N/-S (usft)	+E/-W (usft)	Vertical Section (usft)	Dogleg Rate (°/100ft)	Build Rate (°/100ft)	Turn Rate (°/100ft)
0.00	0.00	0.00	0.00	0.00	0.00	0.00	0.00	0.00	0.00
24.00	0.00	0.00	24.00	0.00	0.00	0.00	0.00	0.00	0.00
<b>Laramie-Fox Hills Formation</b>									
100.00	0.00	0.00	100.00	0.00	0.00	0.00	0.00	0.00	0.00
<b>Start Build 2.00</b>									
196.02	1.92	202.21	196.00	-1.49	-0.61	1.22	2.00	2.00	0.00
<b>Pierre Formation</b>									
200.00	2.00	202.21	199.98	-1.62	-0.66	1.32	2.00	2.00	0.00
300.00	4.00	202.21	299.84	-6.46	-2.64	5.29	2.00	2.00	0.00
400.00	6.00	202.21	399.45	-14.53	-5.93	11.89	2.00	2.00	0.00
472.04	7.44	202.21	471.00	-22.33	-9.12	18.28	2.00	2.00	0.00
<b>Upper Pierre aquifer</b>									
500.00	8.00	202.21	498.70	-25.81	-10.54	21.12	2.00	2.00	0.00
600.00	10.00	202.21	597.47	-40.29	-16.45	32.98	2.00	2.00	0.00
700.00	12.00	202.21	695.62	-57.96	-23.66	47.43	2.00	2.00	0.00
800.00	14.00	202.21	793.06	-78.78	-32.16	64.48	2.00	2.00	0.00
900.00	16.00	202.21	889.64	-102.74	-41.95	84.09	2.00	2.00	0.00
1,000.00	18.00	202.21	985.27	-129.81	-53.00	106.24	2.00	2.00	0.00
1,100.00	20.00	202.21	1,079.82	-159.95	-65.30	130.91	2.00	2.00	0.00
1,200.00	22.00	202.21	1,173.17	-193.13	-78.85	158.06	2.00	2.00	0.00
1,300.00	24.00	202.21	1,265.21	-229.30	-93.61	187.66	2.00	2.00	0.00
1,400.00	26.00	202.21	1,355.84	-268.43	-109.59	219.68	2.00	2.00	0.00
1,428.06	26.56	202.21	1,381.00	-279.93	-114.28	229.10	2.00	2.00	0.00
<b>Base of Upper Pierre aquifer</b>									
1,500.00	28.00	202.21	1,444.94	-310.45	-126.75	254.08	2.00	2.00	0.00
1,600.00	30.00	202.21	1,532.39	-355.34	-145.07	290.81	2.00	2.00	0.00
1,700.00	32.00	202.21	1,618.11	-403.02	-164.54	329.83	2.00	2.00	0.00
1,800.00	34.00	202.21	1,701.97	-453.44	-185.12	371.10	2.00	2.00	0.00
1,900.00	36.00	202.21	1,783.88	-506.54	-206.80	414.56	2.00	2.00	0.00
2,000.00	38.00	202.21	1,863.74	-562.25	-229.55	460.15	2.00	2.00	0.00
2,100.00	40.00	202.21	1,941.45	-620.51	-253.33	507.83	2.00	2.00	0.00
2,200.00	42.00	202.21	2,016.92	-681.25	-278.13	557.54	2.00	2.00	0.00
2,300.00	44.00	202.21	2,090.05	-744.39	-303.90	609.21	2.00	2.00	0.00
2,400.00	46.00	202.21	2,160.76	-809.85	-330.63	662.79	2.00	2.00	0.00
2,500.00	48.00	202.21	2,228.95	-877.56	-358.27	718.20	2.00	2.00	0.00
2,600.00	50.00	202.21	2,294.55	-947.42	-386.80	775.38	2.00	2.00	0.00
2,700.00	52.00	202.21	2,357.48	-1,019.37	-416.17	834.26	2.00	2.00	0.00
2,800.00	54.00	202.21	2,417.66	-1,093.31	-446.35	894.77	2.00	2.00	0.00
2,853.69	55.07	202.21	2,448.81	-1,133.79	-462.88	927.90	2.00	2.00	0.00
<b>Start 7534.72 hold at 2853.69 MD</b>									
2,900.00	55.07	202.21	2,475.32	-1,168.94	-477.23	956.67	0.00	0.00	0.00
3,000.00	55.07	202.21	2,532.58	-1,244.85	-508.22	1,018.80	0.00	0.00	0.00
3,100.00	55.07	202.21	2,589.83	-1,320.76	-539.21	1,080.92	0.00	0.00	0.00
3,200.00	55.07	202.21	2,647.08	-1,396.66	-570.20	1,143.04	0.00	0.00	0.00
3,300.00	55.07	202.21	2,704.33	-1,472.57	-601.19	1,205.16	0.00	0.00	0.00
3,400.00	55.07	202.21	2,761.58	-1,548.48	-632.18	1,267.29	0.00	0.00	0.00
3,500.00	55.07	202.21	2,818.84	-1,624.38	-663.17	1,329.41	0.00	0.00	0.00
3,600.00	55.07	202.21	2,876.09	-1,700.29	-694.16	1,391.53	0.00	0.00	0.00
3,700.00	55.07	202.21	2,933.34	-1,776.20	-725.15	1,453.66	0.00	0.00	0.00
3,800.00	55.07	202.21	2,990.59	-1,852.11	-756.14	1,515.78	0.00	0.00	0.00
3,900.00	55.07	202.21	3,047.84	-1,928.01	-787.13	1,577.90	0.00	0.00	0.00
4,000.00	55.07	202.21	3,105.10	-2,003.92	-818.12	1,640.02	0.00	0.00	0.00
4,100.00	55.07	202.21	3,162.35	-2,079.83	-849.11	1,702.15	0.00	0.00	0.00

# Civitas Resources

## Planning Report

<b>Database:</b>	EDM	<b>Local Co-ordinate Reference:</b>	Well MAVERICK 2W-20-04
<b>Company:</b>	EXTRACTION OIL & GAS	<b>TVD Reference:</b>	KBE 25' @ 4921.00usft
<b>Project:</b>	WELD COUNTY	<b>MD Reference:</b>	KBE 25' @ 4921.00usft
<b>Site:</b>	Sec 36-T7N-R67W	<b>North Reference:</b>	True
<b>Well:</b>	MAVERICK 2W-20-04	<b>Survey Calculation Method:</b>	Minimum Curvature
<b>Wellbore:</b>	OWB		
<b>Design:</b>	PROPOSAL 1		

Planned Survey										
Measured Depth (usft)	Inclination (°)	Azimuth (°)	Vertical Depth (usft)	+N/-S (usft)	+E/-W (usft)	Vertical Section (usft)	Dogleg Rate (°/100ft)	Build Rate (°/100ft)	Turn Rate (°/100ft)	
4,200.00	55.07	202.21	3,219.60	-2,155.73	-880.10	1,764.27	0.00	0.00	0.00	
4,300.00	55.07	202.21	3,276.85	-2,231.64	-911.09	1,826.39	0.00	0.00	0.00	
4,400.00	55.07	202.21	3,334.10	-2,307.55	-942.08	1,888.51	0.00	0.00	0.00	
4,500.00	55.07	202.21	3,391.35	-2,383.45	-973.07	1,950.64	0.00	0.00	0.00	
4,600.00	55.07	202.21	3,448.61	-2,459.36	-1,004.06	2,012.76	0.00	0.00	0.00	
4,700.00	55.07	202.21	3,505.86	-2,535.27	-1,035.05	2,074.88	0.00	0.00	0.00	
4,800.00	55.07	202.21	3,563.11	-2,611.17	-1,066.04	2,137.01	0.00	0.00	0.00	
4,900.00	55.07	202.21	3,620.36	-2,687.08	-1,097.03	2,199.13	0.00	0.00	0.00	
5,000.00	55.07	202.21	3,677.61	-2,762.99	-1,128.02	2,261.25	0.00	0.00	0.00	
5,067.05	55.07	202.21	3,716.00	-2,813.88	-1,148.80	2,302.90	0.00	0.00	0.00	
Larimer ("Parkman") sandstone										
5,100.00	55.07	202.21	3,734.87	-2,838.90	-1,159.01	2,323.37	0.00	0.00	0.00	
5,200.00	55.07	202.21	3,792.12	-2,914.80	-1,190.00	2,385.50	0.00	0.00	0.00	
5,300.00	55.07	202.21	3,849.37	-2,990.71	-1,220.99	2,447.62	0.00	0.00	0.00	
5,400.00	55.07	202.21	3,906.62	-3,066.62	-1,251.98	2,509.74	0.00	0.00	0.00	
5,500.00	55.07	202.21	3,963.87	-3,142.52	-1,282.97	2,571.87	0.00	0.00	0.00	
5,582.31	55.07	202.21	4,011.00	-3,205.00	-1,308.48	2,623.00	0.00	0.00	0.00	
Pierre Formation										
5,600.00	55.07	202.21	4,021.13	-3,218.43	-1,313.96	2,633.99	0.00	0.00	0.00	
5,700.00	55.07	202.21	4,078.38	-3,294.34	-1,344.95	2,696.11	0.00	0.00	0.00	
5,800.00	55.07	202.21	4,135.63	-3,370.24	-1,375.94	2,758.23	0.00	0.00	0.00	
5,900.00	55.07	202.21	4,192.88	-3,446.15	-1,406.93	2,820.36	0.00	0.00	0.00	
5,914.18	55.07	202.21	4,201.00	-3,456.91	-1,411.32	2,829.17	0.00	0.00	0.00	
Terry ("Sussex") sandstone										
6,000.00	55.07	202.21	4,250.13	-3,522.06	-1,437.92	2,882.48	0.00	0.00	0.00	
6,100.00	55.07	202.21	4,307.39	-3,597.96	-1,468.91	2,944.60	0.00	0.00	0.00	
6,200.00	55.07	202.21	4,364.64	-3,673.87	-1,499.90	3,006.73	0.00	0.00	0.00	
6,300.00	55.07	202.21	4,421.89	-3,749.78	-1,530.89	3,068.85	0.00	0.00	0.00	
6,385.78	55.07	202.21	4,471.00	-3,814.89	-1,557.47	3,122.14	0.00	0.00	0.00	
Pierre Formation										
6,400.00	55.07	202.21	4,479.14	-3,825.68	-1,561.88	3,130.97	0.00	0.00	0.00	
6,500.00	55.07	202.21	4,536.39	-3,901.59	-1,592.86	3,193.09	0.00	0.00	0.00	
6,600.00	55.07	202.21	4,593.64	-3,977.50	-1,623.85	3,255.22	0.00	0.00	0.00	
6,700.00	55.07	202.21	4,650.90	-4,053.41	-1,654.84	3,317.34	0.00	0.00	0.00	
6,800.00	55.07	202.21	4,708.15	-4,129.31	-1,685.83	3,379.46	0.00	0.00	0.00	
6,900.00	55.07	202.21	4,765.40	-4,205.22	-1,716.82	3,441.58	0.00	0.00	0.00	
6,927.25	55.07	202.21	4,781.00	-4,225.90	-1,725.27	3,458.51	0.00	0.00	0.00	
Hygiene ("Shannon") sandstone										
7,000.00	55.07	202.21	4,822.65	-4,281.13	-1,747.81	3,503.71	0.00	0.00	0.00	
7,100.00	55.07	202.21	4,879.90	-4,357.03	-1,778.80	3,565.83	0.00	0.00	0.00	
7,200.00	55.07	202.21	4,937.16	-4,432.94	-1,809.79	3,627.95	0.00	0.00	0.00	
7,300.00	55.07	202.21	4,994.41	-4,508.85	-1,840.78	3,690.08	0.00	0.00	0.00	
7,337.71	55.07	202.21	5,016.00	-4,537.47	-1,852.47	3,713.51	0.00	0.00	0.00	
Pierre Formation										
7,400.00	55.07	202.21	5,051.66	-4,584.75	-1,871.77	3,752.20	0.00	0.00	0.00	
7,500.00	55.07	202.21	5,108.91	-4,660.66	-1,902.76	3,814.32	0.00	0.00	0.00	
7,600.00	55.07	202.21	5,166.16	-4,736.57	-1,933.75	3,876.44	0.00	0.00	0.00	
7,700.00	55.07	202.21	5,223.42	-4,812.47	-1,964.74	3,938.57	0.00	0.00	0.00	
7,800.00	55.07	202.21	5,280.67	-4,888.38	-1,995.73	4,000.69	0.00	0.00	0.00	
7,900.00	55.07	202.21	5,337.92	-4,964.29	-2,026.72	4,062.81	0.00	0.00	0.00	
8,000.00	55.07	202.21	5,395.17	-5,040.19	-2,057.71	4,124.94	0.00	0.00	0.00	
8,100.00	55.07	202.21	5,452.42	-5,116.10	-2,088.70	4,187.06	0.00	0.00	0.00	
8,200.00	55.07	202.21	5,509.68	-5,192.01	-2,119.69	4,249.18	0.00	0.00	0.00	

# Civitas Resources

## Planning Report

<b>Database:</b>	EDM	<b>Local Co-ordinate Reference:</b>	Well MAVERICK 2W-20-04
<b>Company:</b>	EXTRACTION OIL & GAS	<b>TVD Reference:</b>	KBE 25' @ 4921.00usft
<b>Project:</b>	WELD COUNTY	<b>MD Reference:</b>	KBE 25' @ 4921.00usft
<b>Site:</b>	Sec 36-T7N-R67W	<b>North Reference:</b>	True
<b>Well:</b>	MAVERICK 2W-20-04	<b>Survey Calculation Method:</b>	Minimum Curvature
<b>Wellbore:</b>	OWB		
<b>Design:</b>	PROPOSAL 1		

Planned Survey										
Measured Depth (usft)	Inclination (°)	Azimuth (°)	Vertical Depth (usft)	+N/-S (usft)	+E/-W (usft)	Vertical Section (usft)	Dogleg Rate (°/100ft)	Build Rate (°/100ft)	Turn Rate (°/100ft)	
8,300.00	55.07	202.21	5,566.93	-5,267.92	-2,150.68	4,311.30	0.00	0.00	0.00	
8,400.00	55.07	202.21	5,624.18	-5,343.82	-2,181.67	4,373.43	0.00	0.00	0.00	
8,500.00	55.07	202.21	5,681.43	-5,419.73	-2,212.66	4,435.55	0.00	0.00	0.00	
8,600.00	55.07	202.21	5,738.68	-5,495.64	-2,243.65	4,497.67	0.00	0.00	0.00	
8,700.00	55.07	202.21	5,795.93	-5,571.54	-2,274.64	4,559.80	0.00	0.00	0.00	
8,800.00	55.07	202.21	5,853.19	-5,647.45	-2,305.63	4,621.92	0.00	0.00	0.00	
8,900.00	55.07	202.21	5,910.44	-5,723.36	-2,336.62	4,684.04	0.00	0.00	0.00	
9,000.00	55.07	202.21	5,967.69	-5,799.26	-2,367.61	4,746.16	0.00	0.00	0.00	
9,100.00	55.07	202.21	6,024.94	-5,875.17	-2,398.60	4,808.29	0.00	0.00	0.00	
9,200.00	55.07	202.21	6,082.19	-5,951.08	-2,429.59	4,870.41	0.00	0.00	0.00	
9,300.00	55.07	202.21	6,139.45	-6,026.98	-2,460.58	4,932.53	0.00	0.00	0.00	
9,400.00	55.07	202.21	6,196.70	-6,102.89	-2,491.57	4,994.65	0.00	0.00	0.00	
9,500.00	55.07	202.21	6,253.95	-6,178.80	-2,522.56	5,056.78	0.00	0.00	0.00	
9,600.00	55.07	202.21	6,311.20	-6,254.70	-2,553.55	5,118.90	0.00	0.00	0.00	
9,700.00	55.07	202.21	6,368.45	-6,330.61	-2,584.54	5,181.02	0.00	0.00	0.00	
9,800.00	55.07	202.21	6,425.71	-6,406.52	-2,615.53	5,243.15	0.00	0.00	0.00	
9,900.00	55.07	202.21	6,482.96	-6,482.43	-2,646.52	5,305.27	0.00	0.00	0.00	
10,000.00	55.07	202.21	6,540.21	-6,558.33	-2,677.51	5,367.39	0.00	0.00	0.00	
10,100.00	55.07	202.21	6,597.46	-6,634.24	-2,708.50	5,429.51	0.00	0.00	0.00	
10,200.00	55.07	202.21	6,654.71	-6,710.15	-2,739.49	5,491.64	0.00	0.00	0.00	
10,300.00	55.07	202.21	6,711.97	-6,786.05	-2,770.48	5,553.76	0.00	0.00	0.00	
10,388.41	55.07	202.21	6,762.58	-6,853.16	-2,797.87	5,608.68	0.00	0.00	0.00	
Start DLS 10.00 TFO 76.90										
10,400.00	55.34	203.58	6,769.19	-6,861.93	-2,801.58	5,615.97	10.00	2.33	11.84	
10,450.00	56.68	209.39	6,797.16	-6,899.00	-2,820.07	5,649.30	10.00	2.68	11.62	
10,500.00	58.28	215.01	6,824.05	-6,934.65	-2,842.54	5,685.52	10.00	3.20	11.24	
10,550.00	60.12	220.43	6,849.67	-6,968.59	-2,868.81	5,724.35	10.00	3.67	10.83	
10,600.00	62.17	225.63	6,873.81	-7,000.57	-2,898.69	5,765.51	10.00	4.10	10.42	
10,650.00	64.41	230.64	6,896.29	-7,030.34	-2,931.95	5,808.67	10.00	4.48	10.01	
10,700.00	66.81	235.46	6,916.95	-7,057.69	-2,968.33	5,853.51	10.00	4.80	9.63	
10,750.00	69.35	240.10	6,935.62	-7,082.40	-3,007.57	5,899.69	10.00	5.09	9.28	
10,800.00	72.02	244.58	6,952.17	-7,104.28	-3,049.35	5,946.86	10.00	5.33	8.97	
10,829.92	73.66	247.20	6,961.00	-7,115.96	-3,075.44	5,975.41	10.00	5.49	8.75	
Sharon Springs Member										
10,850.00	74.78	248.93	6,966.46	-7,123.18	-3,093.36	5,994.65	10.00	5.58	8.62	
10,900.00	77.62	253.17	6,978.39	-7,138.93	-3,139.28	6,042.70	10.00	5.69	8.47	
10,950.00	80.53	257.31	6,987.87	-7,151.43	-3,186.73	6,090.65	10.00	5.82	8.29	
11,000.00	83.49	261.38	6,994.82	-7,160.57	-3,235.38	6,138.14	10.00	5.91	8.15	
11,050.00	86.48	265.41	6,999.20	-7,166.30	-3,284.84	6,184.79	10.00	5.98	8.05	
11,100.00	89.48	269.40	7,000.96	-7,168.56	-3,334.74	6,230.26	10.00	6.01	8.00	
11,108.62	90.00	270.09	7,001.00	-7,168.60	-3,343.36	6,237.95	10.00	6.02	7.99	
Start 10659.94 hold at 11108.62 MD - Niobrara Formation										
11,200.00	90.00	270.09	7,001.00	-7,168.45	-3,434.74	6,319.27	0.00	0.00	0.00	
11,300.00	90.00	270.09	7,001.00	-7,168.29	-3,534.74	6,408.25	0.00	0.00	0.00	
11,400.00	90.00	270.09	7,001.00	-7,168.13	-3,634.74	6,497.24	0.00	0.00	0.00	
11,500.00	90.00	270.09	7,001.00	-7,167.97	-3,734.74	6,586.22	0.00	0.00	0.00	
11,600.00	90.00	270.09	7,001.00	-7,167.80	-3,834.74	6,675.21	0.00	0.00	0.00	
11,700.00	90.00	270.09	7,001.00	-7,167.64	-3,934.74	6,764.19	0.00	0.00	0.00	
11,800.00	90.00	270.09	7,001.00	-7,167.48	-4,034.74	6,853.18	0.00	0.00	0.00	
11,900.00	90.00	270.09	7,001.00	-7,167.32	-4,134.74	6,942.16	0.00	0.00	0.00	
12,000.00	90.00	270.09	7,001.00	-7,167.16	-4,234.74	7,031.15	0.00	0.00	0.00	
12,100.00	90.00	270.09	7,001.00	-7,167.00	-4,334.74	7,120.13	0.00	0.00	0.00	
12,200.00	90.00	270.09	7,001.00	-7,166.84	-4,434.74	7,209.12	0.00	0.00	0.00	

# Civitas Resources

## Planning Report

<b>Database:</b>	EDM	<b>Local Co-ordinate Reference:</b>	Well MAVERICK 2W-20-04
<b>Company:</b>	EXTRACTION OIL & GAS	<b>TVD Reference:</b>	KBE 25' @ 4921.00usft
<b>Project:</b>	WELD COUNTY	<b>MD Reference:</b>	KBE 25' @ 4921.00usft
<b>Site:</b>	Sec 36-T7N-R67W	<b>North Reference:</b>	True
<b>Well:</b>	MAVERICK 2W-20-04	<b>Survey Calculation Method:</b>	Minimum Curvature
<b>Wellbore:</b>	OWB		
<b>Design:</b>	PROPOSAL 1		

Planned Survey									
Measured Depth (usft)	Inclination (°)	Azimuth (°)	Vertical Depth (usft)	+N/-S (usft)	+E/-W (usft)	Vertical Section (usft)	Dogleg Rate (°/100ft)	Build Rate (°/100ft)	Turn Rate (°/100ft)
12,300.00	90.00	270.09	7,001.00	-7,166.68	-4,534.74	7,298.10	0.00	0.00	0.00
12,400.00	90.00	270.09	7,001.00	-7,166.51	-4,634.74	7,387.09	0.00	0.00	0.00
12,500.00	90.00	270.09	7,001.00	-7,166.35	-4,734.74	7,476.07	0.00	0.00	0.00
12,600.00	90.00	270.09	7,001.00	-7,166.19	-4,834.74	7,565.06	0.00	0.00	0.00
12,700.00	90.00	270.09	7,001.00	-7,166.03	-4,934.74	7,654.04	0.00	0.00	0.00
12,800.00	90.00	270.09	7,001.00	-7,165.87	-5,034.74	7,743.03	0.00	0.00	0.00
12,900.00	90.00	270.09	7,001.00	-7,165.71	-5,134.74	7,832.01	0.00	0.00	0.00
13,000.00	90.00	270.09	7,001.00	-7,165.55	-5,234.74	7,921.00	0.00	0.00	0.00
13,100.00	90.00	270.09	7,001.00	-7,165.39	-5,334.74	8,009.98	0.00	0.00	0.00
13,200.00	90.00	270.09	7,001.00	-7,165.23	-5,434.74	8,098.97	0.00	0.00	0.00
13,300.00	90.00	270.09	7,001.00	-7,165.06	-5,534.74	8,187.95	0.00	0.00	0.00
13,400.00	90.00	270.09	7,001.00	-7,164.90	-5,634.74	8,276.94	0.00	0.00	0.00
13,500.00	90.00	270.09	7,001.00	-7,164.74	-5,734.74	8,365.92	0.00	0.00	0.00
13,600.00	90.00	270.09	7,001.00	-7,164.58	-5,834.74	8,454.91	0.00	0.00	0.00
13,700.00	90.00	270.09	7,001.00	-7,164.42	-5,934.74	8,543.89	0.00	0.00	0.00
13,800.00	90.00	270.09	7,001.00	-7,164.26	-6,034.74	8,632.88	0.00	0.00	0.00
13,900.00	90.00	270.09	7,001.00	-7,164.10	-6,134.74	8,721.86	0.00	0.00	0.00
14,000.00	90.00	270.09	7,001.00	-7,163.94	-6,234.74	8,810.85	0.00	0.00	0.00
14,100.00	90.00	270.09	7,001.00	-7,163.78	-6,334.74	8,899.83	0.00	0.00	0.00
14,200.00	90.00	270.09	7,001.00	-7,163.61	-6,434.74	8,988.82	0.00	0.00	0.00
14,300.00	90.00	270.09	7,001.00	-7,163.45	-6,534.74	9,077.80	0.00	0.00	0.00
14,400.00	90.00	270.09	7,001.00	-7,163.29	-6,634.74	9,166.79	0.00	0.00	0.00
14,500.00	90.00	270.09	7,001.00	-7,163.13	-6,734.74	9,255.77	0.00	0.00	0.00
14,600.00	90.00	270.09	7,001.00	-7,162.97	-6,834.74	9,344.76	0.00	0.00	0.00
14,700.00	90.00	270.09	7,001.00	-7,162.81	-6,934.74	9,433.74	0.00	0.00	0.00
14,800.00	90.00	270.09	7,001.00	-7,162.65	-7,034.74	9,522.73	0.00	0.00	0.00
14,900.00	90.00	270.09	7,001.00	-7,162.49	-7,134.74	9,611.71	0.00	0.00	0.00
15,000.00	90.00	270.09	7,001.00	-7,162.33	-7,234.74	9,700.70	0.00	0.00	0.00
15,100.00	90.00	270.09	7,001.00	-7,162.16	-7,334.74	9,789.68	0.00	0.00	0.00
15,200.00	90.00	270.09	7,001.00	-7,162.00	-7,434.74	9,878.67	0.00	0.00	0.00
15,300.00	90.00	270.09	7,001.00	-7,161.84	-7,534.74	9,967.65	0.00	0.00	0.00
15,400.00	90.00	270.09	7,001.00	-7,161.68	-7,634.74	10,056.64	0.00	0.00	0.00
15,500.00	90.00	270.09	7,001.00	-7,161.52	-7,734.74	10,145.62	0.00	0.00	0.00
15,600.00	90.00	270.09	7,001.00	-7,161.36	-7,834.74	10,234.61	0.00	0.00	0.00
15,700.00	90.00	270.09	7,001.00	-7,161.20	-7,934.74	10,323.59	0.00	0.00	0.00
15,800.00	90.00	270.09	7,001.00	-7,161.04	-8,034.74	10,412.58	0.00	0.00	0.00
15,900.00	90.00	270.09	7,001.00	-7,160.88	-8,134.74	10,501.56	0.00	0.00	0.00
16,000.00	90.00	270.09	7,001.00	-7,160.71	-8,234.74	10,590.55	0.00	0.00	0.00
16,100.00	90.00	270.09	7,001.00	-7,160.55	-8,334.74	10,679.53	0.00	0.00	0.00
16,200.00	90.00	270.09	7,001.00	-7,160.39	-8,434.74	10,768.52	0.00	0.00	0.00
16,300.00	90.00	270.09	7,001.00	-7,160.23	-8,534.74	10,857.50	0.00	0.00	0.00
16,400.00	90.00	270.09	7,001.00	-7,160.07	-8,634.74	10,946.49	0.00	0.00	0.00
16,500.00	90.00	270.09	7,001.00	-7,159.91	-8,734.74	11,035.48	0.00	0.00	0.00
16,600.00	90.00	270.09	7,001.00	-7,159.75	-8,834.74	11,124.46	0.00	0.00	0.00
16,700.00	90.00	270.09	7,001.00	-7,159.59	-8,934.74	11,213.45	0.00	0.00	0.00
16,800.00	90.00	270.09	7,001.00	-7,159.42	-9,034.74	11,302.43	0.00	0.00	0.00
16,900.00	90.00	270.09	7,001.00	-7,159.26	-9,134.74	11,391.42	0.00	0.00	0.00
17,000.00	90.00	270.09	7,001.00	-7,159.10	-9,234.74	11,480.40	0.00	0.00	0.00
17,100.00	90.00	270.09	7,001.00	-7,158.94	-9,334.74	11,569.39	0.00	0.00	0.00
17,200.00	90.00	270.09	7,001.00	-7,158.78	-9,434.74	11,658.37	0.00	0.00	0.00
17,300.00	90.00	270.09	7,001.00	-7,158.62	-9,534.74	11,747.36	0.00	0.00	0.00
17,400.00	90.00	270.09	7,001.00	-7,158.46	-9,634.74	11,836.34	0.00	0.00	0.00
17,500.00	90.00	270.09	7,001.00	-7,158.30	-9,734.74	11,925.33	0.00	0.00	0.00
17,600.00	90.00	270.09	7,001.00	-7,158.14	-9,834.74	12,014.31	0.00	0.00	0.00

# Civitas Resources

## Planning Report

<b>Database:</b>	EDM	<b>Local Co-ordinate Reference:</b>	Well MAVERICK 2W-20-04
<b>Company:</b>	EXTRACTION OIL & GAS	<b>TVD Reference:</b>	KBE 25' @ 4921.00usft
<b>Project:</b>	WELD COUNTY	<b>MD Reference:</b>	KBE 25' @ 4921.00usft
<b>Site:</b>	Sec 36-T7N-R67W	<b>North Reference:</b>	True
<b>Well:</b>	MAVERICK 2W-20-04	<b>Survey Calculation Method:</b>	Minimum Curvature
<b>Wellbore:</b>	OWB		
<b>Design:</b>	PROPOSAL 1		

Planned Survey										
Measured Depth (usft)	Inclination (°)	Azimuth (°)	Vertical Depth (usft)	+N/-S (usft)	+E/-W (usft)	Vertical Section (usft)	Dogleg Rate (°/100ft)	Build Rate (°/100ft)	Turn Rate (°/100ft)	
17,700.00	90.00	270.09	7,001.00	-7,157.97	-9,934.74	12,103.30	0.00	0.00	0.00	
17,800.00	90.00	270.09	7,001.00	-7,157.81	-10,034.74	12,192.28	0.00	0.00	0.00	
17,900.00	90.00	270.09	7,001.00	-7,157.65	-10,134.74	12,281.27	0.00	0.00	0.00	
18,000.00	90.00	270.09	7,001.00	-7,157.49	-10,234.74	12,370.25	0.00	0.00	0.00	
18,100.00	90.00	270.09	7,001.00	-7,157.33	-10,334.74	12,459.24	0.00	0.00	0.00	
18,200.00	90.00	270.09	7,001.00	-7,157.17	-10,434.73	12,548.22	0.00	0.00	0.00	
18,300.00	90.00	270.09	7,001.00	-7,157.01	-10,534.73	12,637.21	0.00	0.00	0.00	
18,400.00	90.00	270.09	7,001.00	-7,156.85	-10,634.73	12,726.19	0.00	0.00	0.00	
18,500.00	90.00	270.09	7,001.00	-7,156.69	-10,734.73	12,815.18	0.00	0.00	0.00	
18,600.00	90.00	270.09	7,001.00	-7,156.52	-10,834.73	12,904.16	0.00	0.00	0.00	
18,700.00	90.00	270.09	7,001.00	-7,156.36	-10,934.73	12,993.15	0.00	0.00	0.00	
18,800.00	90.00	270.09	7,001.00	-7,156.20	-11,034.73	13,082.13	0.00	0.00	0.00	
18,900.00	90.00	270.09	7,001.00	-7,156.04	-11,134.73	13,171.12	0.00	0.00	0.00	
19,000.00	90.00	270.09	7,001.00	-7,155.88	-11,234.73	13,260.10	0.00	0.00	0.00	
19,100.00	90.00	270.09	7,001.00	-7,155.72	-11,334.73	13,349.09	0.00	0.00	0.00	
19,200.00	90.00	270.09	7,001.00	-7,155.56	-11,434.73	13,438.07	0.00	0.00	0.00	
19,300.00	90.00	270.09	7,001.00	-7,155.40	-11,534.73	13,527.06	0.00	0.00	0.00	
19,400.00	90.00	270.09	7,001.00	-7,155.24	-11,634.73	13,616.04	0.00	0.00	0.00	
19,500.00	90.00	270.09	7,001.00	-7,155.07	-11,734.73	13,705.03	0.00	0.00	0.00	
19,600.00	90.00	270.09	7,001.00	-7,154.91	-11,834.73	13,794.01	0.00	0.00	0.00	
19,700.00	90.00	270.09	7,001.00	-7,154.75	-11,934.73	13,883.00	0.00	0.00	0.00	
19,800.00	90.00	270.09	7,001.00	-7,154.59	-12,034.73	13,971.98	0.00	0.00	0.00	
19,900.00	90.00	270.09	7,001.00	-7,154.43	-12,134.73	14,060.97	0.00	0.00	0.00	
20,000.00	90.00	270.09	7,001.00	-7,154.27	-12,234.73	14,149.95	0.00	0.00	0.00	
20,100.00	90.00	270.09	7,001.00	-7,154.11	-12,334.73	14,238.94	0.00	0.00	0.00	
20,200.00	90.00	270.09	7,001.00	-7,153.95	-12,434.73	14,327.92	0.00	0.00	0.00	
20,300.00	90.00	270.09	7,001.00	-7,153.79	-12,534.73	14,416.91	0.00	0.00	0.00	
20,400.00	90.00	270.09	7,001.00	-7,153.62	-12,634.73	14,505.89	0.00	0.00	0.00	
20,500.00	90.00	270.09	7,001.00	-7,153.46	-12,734.73	14,594.88	0.00	0.00	0.00	
20,600.00	90.00	270.09	7,001.00	-7,153.30	-12,834.73	14,683.86	0.00	0.00	0.00	
20,700.00	90.00	270.09	7,001.00	-7,153.14	-12,934.73	14,772.85	0.00	0.00	0.00	
20,800.00	90.00	270.09	7,001.00	-7,152.98	-13,034.73	14,861.83	0.00	0.00	0.00	
20,900.00	90.00	270.09	7,001.00	-7,152.82	-13,134.73	14,950.82	0.00	0.00	0.00	
21,000.00	90.00	270.09	7,001.00	-7,152.66	-13,234.73	15,039.80	0.00	0.00	0.00	
21,100.00	90.00	270.09	7,001.00	-7,152.50	-13,334.73	15,128.79	0.00	0.00	0.00	
21,200.00	90.00	270.09	7,001.00	-7,152.33	-13,434.73	15,217.77	0.00	0.00	0.00	
21,300.00	90.00	270.09	7,001.00	-7,152.17	-13,534.73	15,306.76	0.00	0.00	0.00	
21,400.00	90.00	270.09	7,001.00	-7,152.01	-13,634.73	15,395.74	0.00	0.00	0.00	
21,500.00	90.00	270.09	7,001.00	-7,151.85	-13,734.73	15,484.73	0.00	0.00	0.00	
21,600.00	90.00	270.09	7,001.00	-7,151.69	-13,834.73	15,573.71	0.00	0.00	0.00	
21,700.00	90.00	270.09	7,001.00	-7,151.53	-13,934.73	15,662.70	0.00	0.00	0.00	
21,768.56	90.00	270.09	7,001.00	-7,151.42	-14,003.29	15,723.71	0.00	0.00	0.00	
TD at 21768.56										



# Civitas Resources

## Planning Report

<b>Database:</b>	EDM	<b>Local Co-ordinate Reference:</b>	Well MAVERICK 2W-20-04
<b>Company:</b>	EXTRACTION OIL & GAS	<b>TVD Reference:</b>	KBE 25' @ 4921.00usft
<b>Project:</b>	WELD COUNTY	<b>MD Reference:</b>	KBE 25' @ 4921.00usft
<b>Site:</b>	Sec 36-T7N-R67W	<b>North Reference:</b>	True
<b>Well:</b>	MAVERICK 2W-20-04	<b>Survey Calculation Method:</b>	Minimum Curvature
<b>Wellbore:</b>	OWB		
<b>Design:</b>	PROPOSAL 1		

Design Targets									
Target Name									
- hit/miss target	Dip Angle	Dip Dir.	TVD	+N/-S	+E/-W	Northing	Easting	Latitude	Longitude
- Shape	(°)	(°)	(usft)	(usft)	(usft)	(usft)	(usft)		
LP-MAVERICK 2W-20-0	0.00	0.00	7,001.00	-7,168.60	-3,343.36	1,429,390.43	3,180,301.34	40.510268°N	104.851562°W
- plan hits target center									
- Point									
PBHL-MAVERICK 2W-2	0.00	0.00	7,001.00	-7,151.42	-14,003.29	1,429,328.20	3,169,641.58	40.510305°N	104.889899°W
- plan hits target center									
- Point									

Formations					
Measured Depth	Vertical Depth	Name	Lithology	Dip	Dip Direction
(usft)	(usft)			(°)	(°)
24.00	24.00	Laramie-Fox Hills Formation			
196.02	196.00	Pierre Formation			
472.04	471.00	Upper Pierre aquifer			
1,428.06	1,381.00	Base of Upper Pierre aquifer			
5,067.05	3,716.00	Larimer ("Parkman") sandstone			
5,582.31	4,011.00	Pierre Formation			
5,914.18	4,201.00	Terry ("Sussex") sandstone			
6,385.78	4,471.00	Pierre Formation			
6,927.25	4,781.00	Hygiene ("Shannon") sandstone			
7,337.71	5,016.00	Pierre Formation			
10,829.92	6,961.00	Sharon Springs Member			
11,108.62	7,001.00	Niobrara Formation			

Plan Annotations				
Measured Depth	Vertical Depth	Local Coordinates		Comment
(usft)	(usft)	+N/-S (usft)	+E/-W (usft)	
100.00	100.00	0.00	0.00	Start Build 2.00
2,853.69	2,448.81	-1,133.79	-462.88	Start 7534.72 hold at 2853.69 MD
10,388.41	6,762.58	-6,853.16	-2,797.87	Start DLS 10.00 TFO 76.90
11,108.62	7,001.00	-7,168.60	-3,343.36	Start 10659.94 hold at 11108.62 MD
21,768.56	7,001.00	-7,151.42	-14,003.29	TD at 21768.56