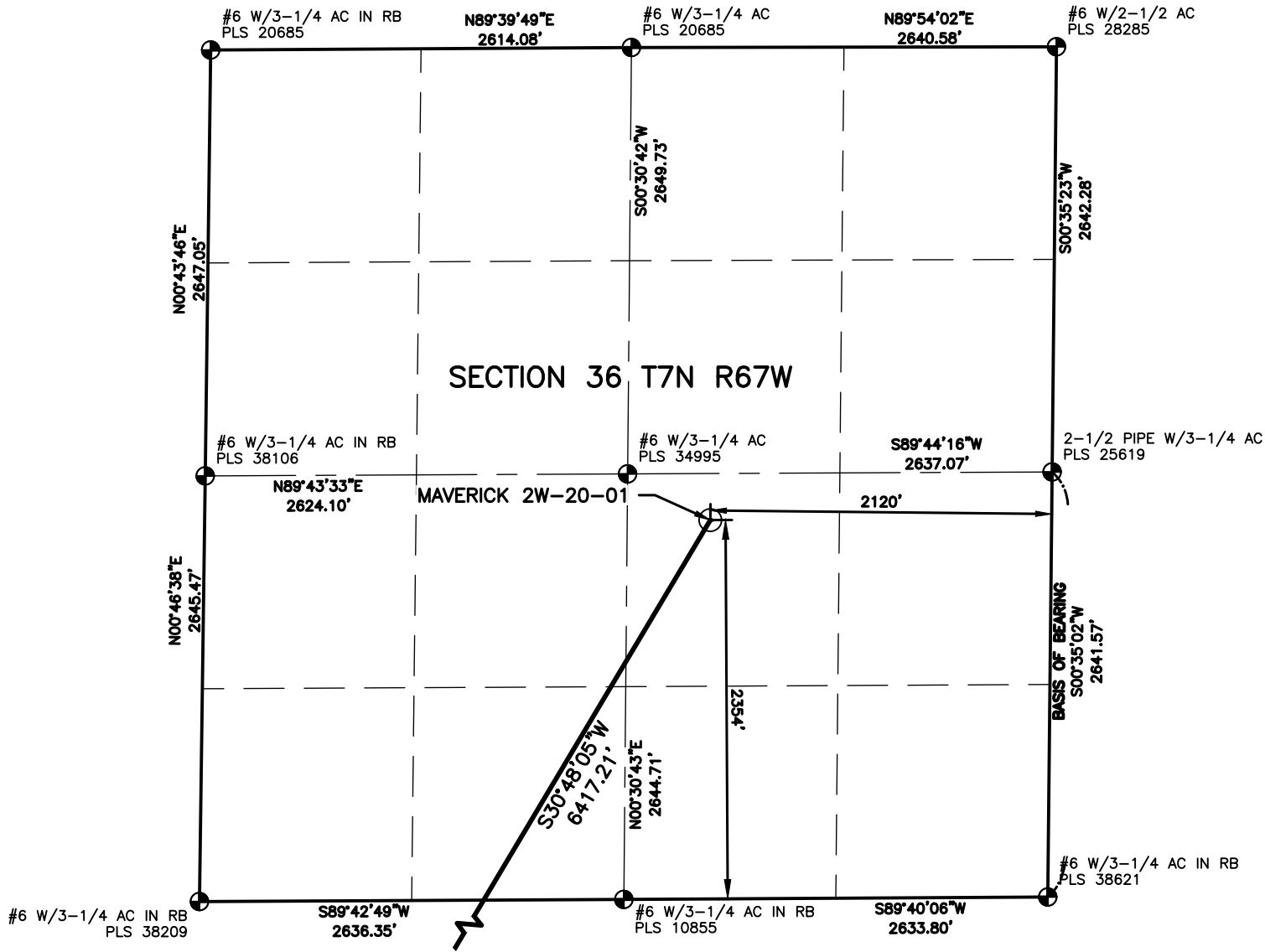
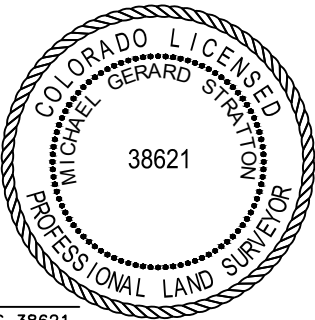


L:\Engineering\0222018 Civitas Inc Man\SURVEY\DRAWINGS\EXHIBITS\WELL PLATS\MAVERICK 2W-20-01.dwg, 1/23/2025 9:12:30 AM, MICHAEL STRATTON, LAMP RYN



LAND SURVEYOR'S CERTIFICATION

LAMP RYNearson, Inc. of Ft. Collins, Colorado has, in accordance with a request from Troy Owens of Extraction Oil & Gas, determined the surface location of the well designated as Maverick 2W-20-01 to be 2354' from the south line and 2120' from the east line of Section 36, Township 7 North, Range 67 West of the 6th P.M., Weld County, Colorado.



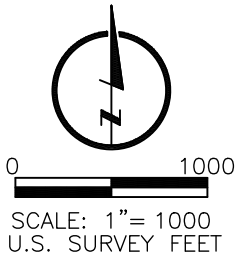
MICHAEL GERARD STRATTON COLORADO PLS 38621
DATE OF SURVEY: 05/30/2023 (SECTION CONTROL)
DATE OF SURVEY: 08/10/2022 (WELL LOCATION)

SURFACE POINT				LANDING POINT				BOTTOM HOLE			
2354'	FSL	2120'	FEL	2108'	FSL	100'	FEL	1800'	FSL	300'	FEL
INFLECTION POINT #1				INFLECTION POINT #2							
2095'	FSL	2588'	FWL	1800'	FSL	900'	FWL				

SURFACE POINT					LANDING POINT		BOTTOM HOLE		INFLECTION POINT 1		INFLECTION POINT 2	
LATITUDE	LONGITUDE	ELEVATION	PDOP	OPERATOR	LATITUDE	LONGITUDE	LATITUDE	LONGITUDE	LATITUDE	LONGITUDE	LATITUDE	LONGITUDE
40.529893	-104.839771	4897	1.835	A.CAUWELS	40.514749	-104.851547	40.513942	-104.889959	40.514736	-104.879587	40.513935	-104.885644

- LEGEND**
- COMPUTED ALIQUOT CORNER
 - ALIQUOT CORNER
 - BOTTOM HOLE
 - ALIQUOT WITNESS CORNER
 - LANDING POINT
 - PROPOSED WELL
 - A.C. ALUMINUM CAP
 - R.B. RANGE BOX
 - CONC. CONCRETE
 - I.C.V.B. IRRIGATION CONTROL VALVE BOX

BASIS OF BEARING:
THE EAST LINE OF THE SOUTHEAST QUARTER OF SECTION 36-T7N-R67W BEARS S00°35'02"W FOR A DISTANCE OF 2641.57' FEET BETWEEN THE EAST QUARTER CORNER OF SECTION 36 MONUMENTED BY A 2-1/2" PIPE WITH A 3-1/4" ALUMINUM CAP STAMPED, "PLS 25619", AND AT THE SOUTHEAST CORNER OF SECTION 36, MONUMENTED BY A #6 REBAR WITH A 3-1/4" ALUMINUM CAP STAMPED, "PLS 38621", BASED ON A LOW DISTORTION PROJECTION DEVELOPED BY LAMP RYNearson USING THE NORTH AMERICAN DATUM OF 1983(2011).



- NOTES:**
- DISTANCES ARE MEASURED PERPENDICULAR TO NEAREST SECTION LINE AND ARE SHOWN ON THE SAME SIDE OF THE SECTION LINE WHERE THE WELL IS LOCATED.
 - THIS MAP DOES NOT REPRESENT A MONUMENTED BOUNDARY SURVEY. SIXTEENTH CORNER LOCATIONS ARE COMPUTED, UNLESS OTHERWISE NOTED.
 - BOTTOM HOLE LOCATIONS AND HORIZONTAL COMPLETION ZONE PROVIDED BY OTHERS.
 - ALL REBAR AND CAPS ARE MEASURED IN INCHES.
 - ELEVATIONS ARE BASED ON THE NORTH AMERICAN VERTICAL DATUM OF 1988 AS MEASURED BY GNSS OBSERVATIONS USING GEOID 18.

LAMP RYNearson

LAMP RYNearson.COM



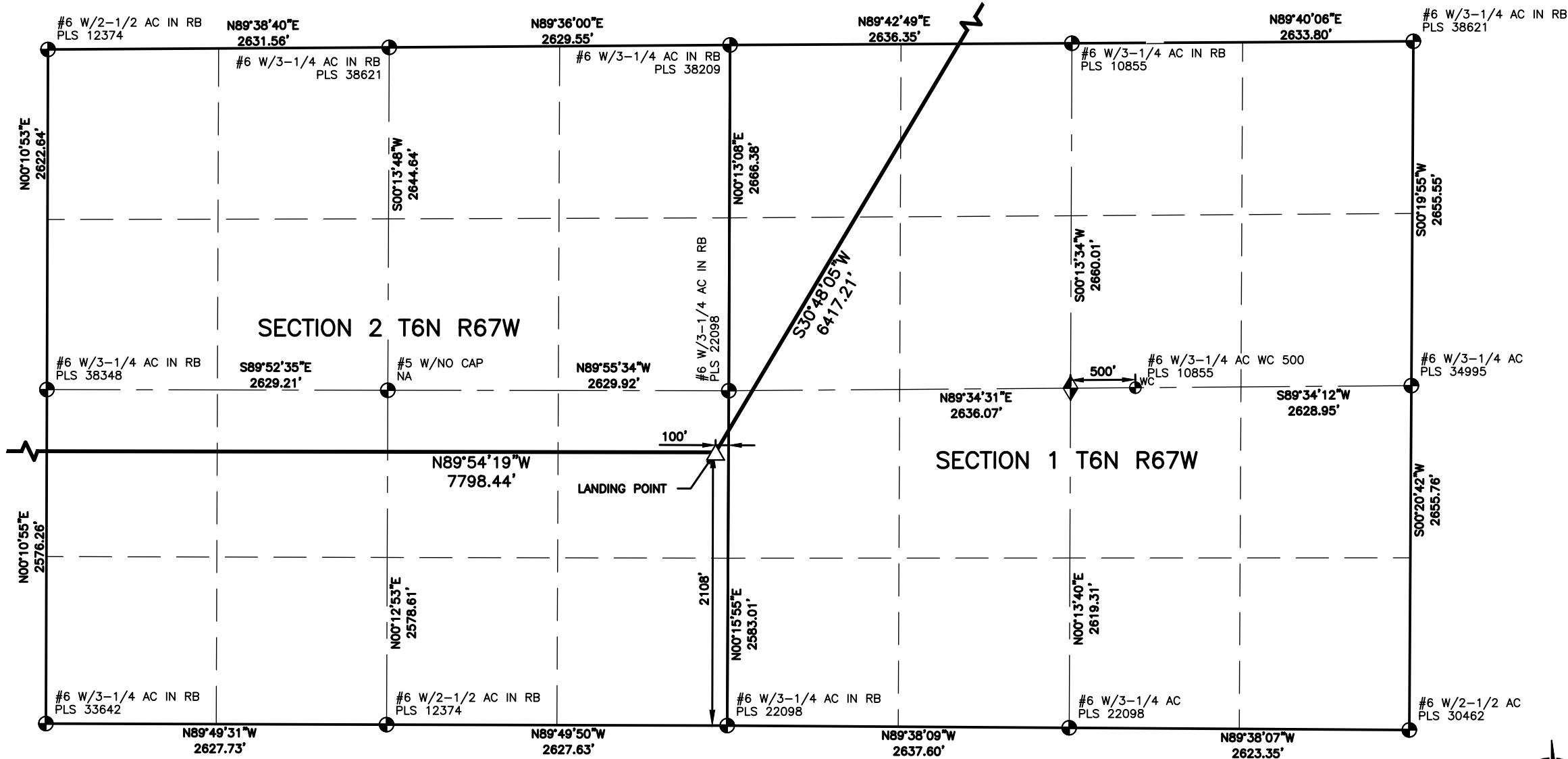
DESIGNER / DRAFTER
JOSH CROAK
REVIEWER
MICHAEL STRATTON
PROJECT NUMBER
0222018.01
DATE
1/23/2025
SURFACE LOCATION
NW/4 SE/4 S36, T7N, R67W
BOOK AND PAGE
SHEET 1 OF 3

WELL LOCATION PLAT

EXTRACTION OIL & GAS

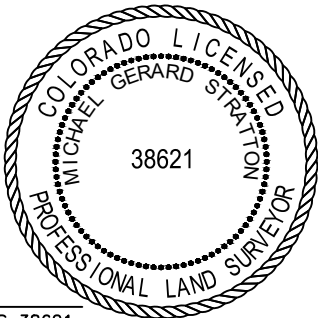
MAVERICK 2W-20-01

L:\Engineering\0222018 Civitas Inc Man\SURVEY\DRAWINGS\EXHIBITS\WELL PLATS\MAVERICK 2W-20-01.dwg, 1/23/2025 9:12:32 AM, MICHAEL STRATTON, LAMP RYNEARSON



LAND SURVEYOR'S CERTIFICATION

LAMP RYNEARSON, INC. OF FT. COLLINS, COLORADO HAS, IN ACCORDANCE WITH A REQUEST FROM TROY OWENS OF EXTRACTION OIL & GAS, DETERMINED THE SURFACE LOCATION OF THE WELL DESIGNATED AS MAVERICK 2W-20-01 TO BE 2354' FROM THE SOUTH LINE AND 2120' FROM THE EAST LINE OF SECTION 36, TOWNSHIP 7 NORTH, RANGE 67 WEST OF THE 6TH P.M., WELD COUNTY, COLORADO.



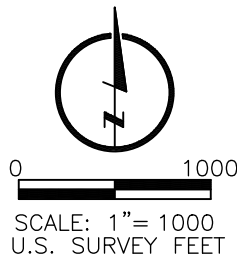
MICHAEL GERARD STRATTON COLORADO PLS 38621
DATE OF SURVEY: 05/30/2023 (SECTION CONTROL)
DATE OF SURVEY: 08/10/2022 (WELL LOCATION)

SURFACE POINT				LANDING POINT				BOTTOM HOLE			
2354'	FSL	2120'	FEL	2108'	FSL	100'	FEL	1800'	FSL	300'	FEL
INFLECTION POINT #1				INFLECTION POINT #2							
2095'	FSL	2588'	FWL	1800'	FSL	900'	FWL				

SURFACE POINT					LANDING POINT		BOTTOM HOLE		INFLECTION POINT 1		INFLECTION POINT 2	
LATITUDE	LONGITUDE	ELEVATION	PDOP	OPERATOR	LATITUDE	LONGITUDE	LATITUDE	LONGITUDE	LATITUDE	LONGITUDE	LATITUDE	LONGITUDE
40.529893	-104.839771	4897	1.835	A.CAUWELS	40.514749	-104.851547	40.513942	-104.889959	40.514736	-104.879587	40.513935	-104.885644

- LEGEND**
- COMPUTED ALIQUOT CORNER
 - ALIQUOT CORNER
 - BOTTOM HOLE
 - ALIQUOT WITNESS CORNER
 - LANDING POINT
 - PROPOSED WELL
 - A.C. ALUMINUM CAP
 - R.B. RANGE BOX
 - CONC. CONCRETE
 - I.C.V.B. IRRIGATION CONTROL VALVE BOX

BASIS OF BEARING:
THE EAST LINE OF THE SOUTHEAST QUARTER OF SECTION 36-T7N-R67W BEARS S00°35'02"W FOR A DISTANCE OF 2641.57' FEET BETWEEN THE EAST QUARTER CORNER OF SECTION 36 MONUMENTED BY A 2-1/2" PIPE WITH A 3-1/4" ALUMINUM CAP STAMPED, "PLS 25619", AND AT THE SOUTHEAST CORNER OF SECTION 36, MONUMENTED BY A #6 REBAR WITH A 3-1/4" ALUMINUM CAP STAMPED, "PLS 38621", BASED ON A LOW DISTORTION PROJECTION DEVELOPED BY LAMP RYNEARSON USING THE NORTH AMERICAN DATUM OF 1983(2011).



- NOTES:**
- DISTANCES ARE MEASURED PERPENDICULAR TO NEAREST SECTION LINE AND ARE SHOWN ON THE SAME SIDE OF THE SECTION LINE WHERE THE WELL IS LOCATED.
 - THIS MAP DOES NOT REPRESENT A MONUMENTED BOUNDARY SURVEY. SIXTEENTH CORNER LOCATIONS ARE COMPUTED, UNLESS OTHERWISE NOTED.
 - BOTTOM HOLE LOCATIONS AND HORIZONTAL COMPLETION ZONE PROVIDED BY OTHERS.
 - ALL REBAR AND CAPS ARE MEASURED IN INCHES.
 - ELEVATIONS ARE BASED ON THE NORTH AMERICAN VERTICAL DATUM OF 1988 AS MEASURED BY GNSS OBSERVATIONS USING GEOID 18.

LAMP RYNEARSON

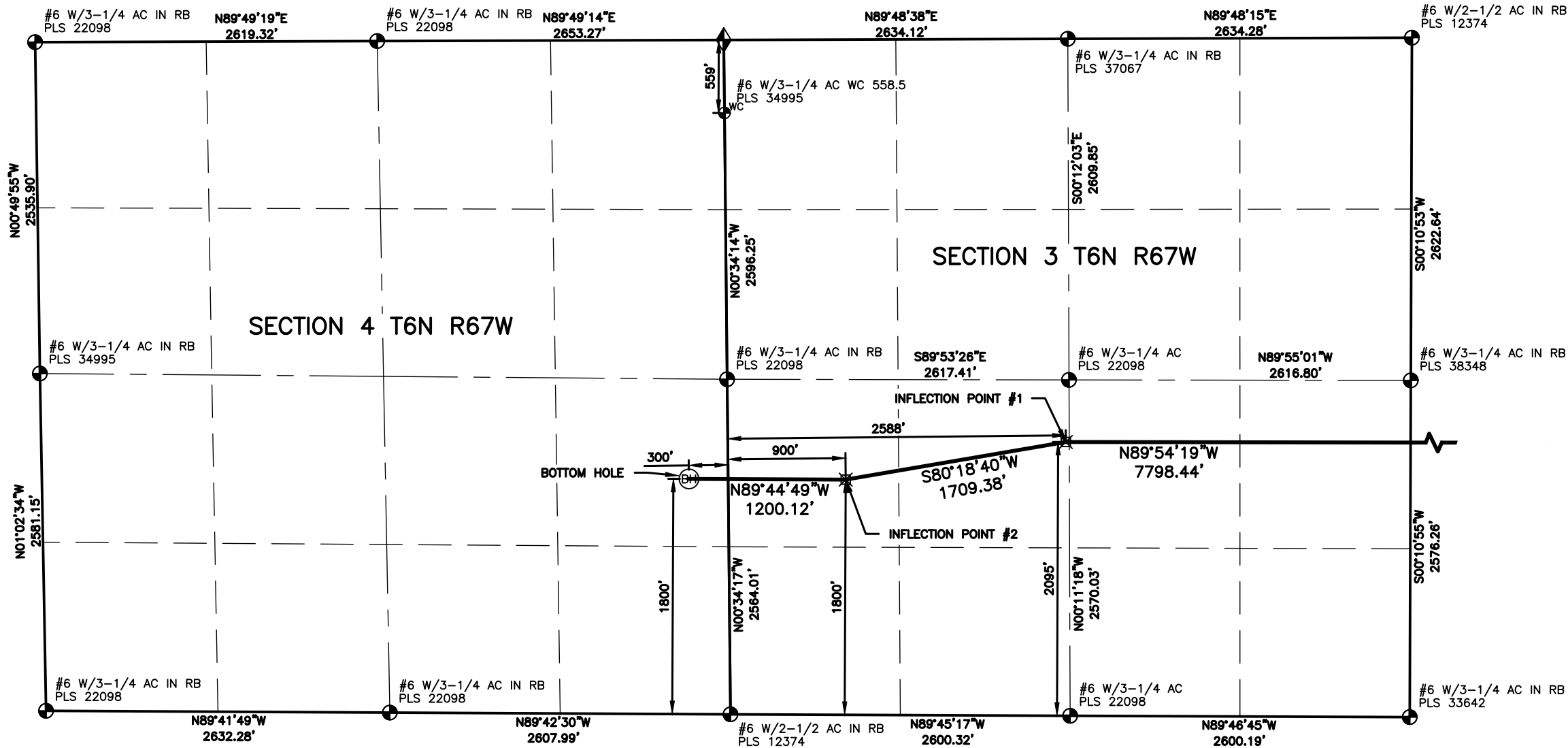
LAMP RYNEARSON.COM



DESIGNER / DRAFTER
JOSH CROAK
REVIEWER
MICHAEL STRATTON
PROJECT NUMBER
0222018.01
DATE
1/23/2025
SURFACE LOCATION
NW/4 SE/4 S36, T7N, R67W
BOOK AND PAGE
SHEET 2 OF 3

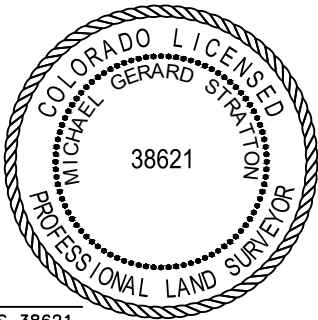
WELL LOCATION PLAT
EXTRACTION OIL & GAS
MAVERICK 2W-20-01

L:\Engineering\0222018 CIVITAS\Drawings\EXHIBITS\WELL PLATS\MAVERICK 2W-15-01-C.dwg, 1/23/2025 9:12:37 AM, MICHAEL STRATTON, LAMP RYNEARSON



LAND SURVEYOR'S CERTIFICATION

LAMP RYNEARSON, INC. OF FT. COLLINS, COLORADO HAS, IN ACCORDANCE WITH A REQUEST FROM TROY OWENS OF EXTRACTION OIL & GAS, DETERMINED THE SURFACE LOCATION OF THE WELL DESIGNATED AS MAVERICK 2W-20-01 TO BE 2354' FROM THE SOUTH LINE AND 2120' FROM THE EAST LINE OF SECTION 36, TOWNSHIP 7 NORTH, RANGE 67 WEST OF THE 6TH P.M., WELD COUNTY, COLORADO.



MICHAEL GERARD STRATTON COLORADO PLS 38621
DATE OF SURVEY: 05/30/2023 (SECTION CONTROL)
DATE OF SURVEY: 08/10/2022 (WELL LOCATION)

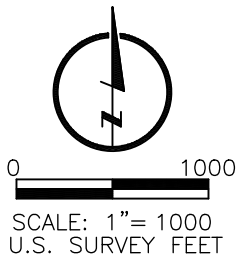
SURFACE POINT				LANDING POINT				BOTTOM HOLE			
2354'	FSL	2120'	FEL	2108'	FSL	100'	FEL	1800'	FSL	300'	FEL
				INFLECTION POINT #1				INFLECTION POINT #2			
				2095'	FSL	2588'	FWL	1800'	FSL	900'	FWL

SURFACE POINT					LANDING POINT		BOTTOM HOLE		INFLECTION POINT 1		INFLECTION POINT 2	
LATITUDE	LONGITUDE	ELEVATION	PDOP	OPERATOR	LATITUDE	LONGITUDE	LATITUDE	LONGITUDE	LATITUDE	LONGITUDE	LATITUDE	LONGITUDE
40.529893	-104.839771	4897	1.835	A.CAUWELS	40.514749	-104.851547	40.513942	-104.889959	40.514736	-104.879587	40.513935	-104.885644

LEGEND			
◆	COMPUTED ALIQUOT CORNER	⊙	PROPOSED WELL
⊙	ALIQUOT CORNER	A.C.	ALUMINUM CAP
⊙	BOTTOM HOLE	R.B.	RANGE BOX
⊙	ALIQUOT WITNESS CORNER	CONC.	CONCRETE
△	LANDING POINT	I.C.V.B.	IRRIGATION CONTROL VALVE BOX

BASIS OF BEARING:

THE EAST LINE OF THE SOUTHEAST QUARTER OF SECTION 36-T7N-R67W BEARS S00°35'02"W FOR A DISTANCE OF 2641.57' FEET BETWEEN THE EAST QUARTER CORNER OF SECTION 36 MONUMENTED BY A 2-1/2" PIPE WITH A 3-1/4" ALUMINUM CAP STAMPED, "PLS 25619", AND AT THE SOUTHEAST CORNER OF SECTION 36, MONUMENTED BY A #6 REBAR WITH A 3-1/4" ALUMINUM CAP STAMPED, "PLS 38621", BASED ON A LOW DISTORTION PROJECTION DEVELOPED BY LAMP RYNEARSON USING THE NORTH AMERICAN DATUM OF 1983(2011).



NOTES:

- DISTANCES ARE MEASURED PERPENDICULAR TO NEAREST SECTION LINE AND ARE SHOWN ON THE SAME SIDE OF THE SECTION LINE WHERE THE WELL IS LOCATED.
- THIS MAP DOES NOT REPRESENT A MONUMENTED BOUNDARY SURVEY. SIXTEENTH CORNER LOCATIONS ARE COMPUTED, UNLESS OTHERWISE NOTED.
- BOTTOM HOLE LOCATIONS AND HORIZONTAL COMPLETION ZONE PROVIDED BY OTHERS.
- ALL REBAR AND CAPS ARE MEASURED IN INCHES.
- ELEVATIONS ARE BASED ON THE NORTH AMERICAN VERTICAL DATUM OF 1988 AS MEASURED BY GNSS OBSERVATIONS USING GEOID 18.

LAMP RYNEARSON

LAMP RYNEARSON.COM



DESIGNER / DRAFTER
JOSH CROAK
REVIEWER
MICHAEL STRATTON
PROJECT NUMBER
0222018.01
DATE
1/23/2025
SURFACE LOCATION
NW/4 SE/4 S36, T7N, R67W
BOOK AND PAGE
SHEET 3 OF 3

WELL LOCATION PLAT

EXTRACTION OIL & GAS

MAVERICK 2W-20-01