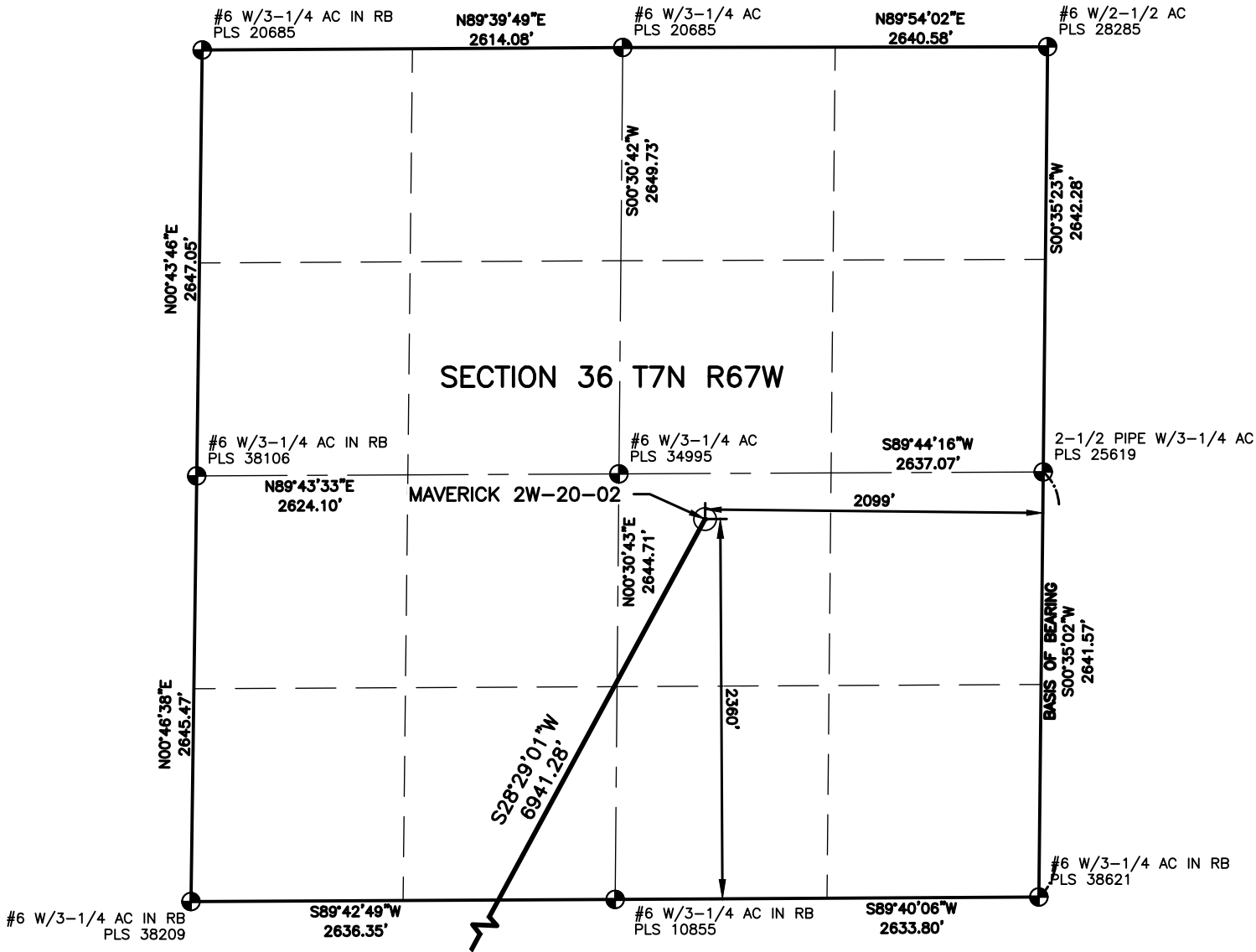
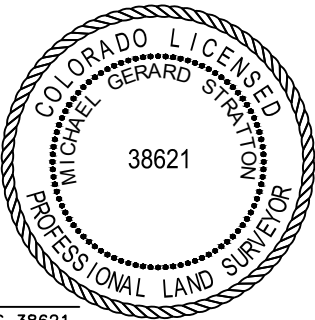


L:\Engineering\0222018 Civitas Ice Man\SURVEY\DRAWINGS\EXHIBITS\WELL PLATS\MAVERICK 2W-20-02N.dwg, 1/23/2025 9:12:49 AM, MICHAEL STRATTON, LAMP RYNEARSON



LAND SURVEYOR'S CERTIFICATION

LAMP RYNEARSON, INC. OF FT. COLLINS, COLORADO HAS, IN ACCORDANCE WITH A REQUEST FROM TROY OWENS OF EXTRACTION OIL & GAS, DETERMINED THE SURFACE LOCATION OF THE WELL DESIGNATED AS MAVERICK 2W-20-02 TO BE 2360' FROM THE SOUTH LINE AND 2099' FROM THE EAST LINE OF SECTION 36, TOWNSHIP 7 NORTH, RANGE 67 WEST OF THE 6TH P.M., WELD COUNTY, COLORADO.



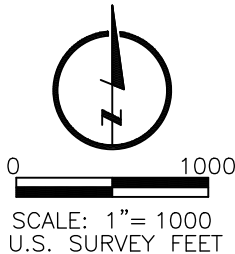
MICHAEL GERARD STRATTON COLORADO PLS 38621
DATE OF SURVEY: 05/30/2023 (SECTION CONTROL)
DATE OF SURVEY: 08/10/2022 (WELL LOCATION)

SURFACE POINT				LANDING POINT				BOTTOM HOLE			
2360'	FSL	2099'	FEL	1525'	FSL	100'	FEL	1378'	FSL	300'	FEL
INFLECTION POINT #1				INFLECTION POINT #2							
1525'	FSL	2580'	FWL	1378'	FSL	900'	FWL				

SURFACE POINT					LANDING POINT		BOTTOM HOLE		INFLECTION POINT 1		INFLECTION POINT 2	
LATITUDE	LONGITUDE	ELEVATION	PDOP	OPERATOR	LATITUDE	LONGITUDE	LATITUDE	LONGITUDE	LATITUDE	LONGITUDE	LATITUDE	LONGITUDE
40.529910	-104.839693	4897	1.810	A.CAUWELS	40.513149	-104.851553	40.512783	-104.889940	40.513172	-104.879589	40.512777	-104.885625

- LEGEND**
- COMPUTED ALIQUOT CORNER
 - ALIQUOT CORNER
 - BOTTOM HOLE
 - ALIQUOT WITNESS CORNER
 - LANDING POINT
 - PROPOSED WELL
 - A.C. ALUMINUM CAP
 - R.B. RANGE BOX
 - CONC. CONCRETE
 - I.C.V.B. IRRIGATION CONTROL VALVE BOX

BASIS OF BEARING:
THE EAST LINE OF THE SOUTHEAST QUARTER OF SECTION 36-T7N-R67W BEARS S00°35'02"W FOR A DISTANCE OF 2641.57' FEET BETWEEN THE EAST QUARTER CORNER OF SECTION 36 MONUMENTED BY A 2-1/2" PIPE WITH A 3-1/4" ALUMINUM CAP STAMPED, "PLS 25619", AND AT THE SOUTHEAST CORNER OF SECTION 36, MONUMENTED BY A #6 REBAR WITH A 3-1/4" ALUMINUM CAP STAMPED, "PLS 38621", BASED ON A LOW DISTORTION PROJECTION DEVELOPED BY LAMP RYNEARSON USING THE NORTH AMERICAN DATUM OF 1983(2011).



- NOTES:**
- DISTANCES ARE MEASURED PERPENDICULAR TO NEAREST SECTION LINE AND ARE SHOWN ON THE SAME SIDE OF THE SECTION LINE WHERE THE WELL IS LOCATED.
 - THIS MAP DOES NOT REPRESENT A MONUMENTED BOUNDARY SURVEY. SIXTEENTH CORNER LOCATIONS ARE COMPUTED, UNLESS OTHERWISE NOTED.
 - BOTTOM HOLE LOCATIONS AND HORIZONTAL COMPLETION ZONE PROVIDED BY OTHERS.
 - ALL REBAR AND CAPS ARE MEASURED IN INCHES.
 - ELEVATIONS ARE BASED ON THE NORTH AMERICAN VERTICAL DATUM OF 1988 AS MEASURED BY GNSS OBSERVATIONS USING GEOID 18.

LAMP RYNEARSON

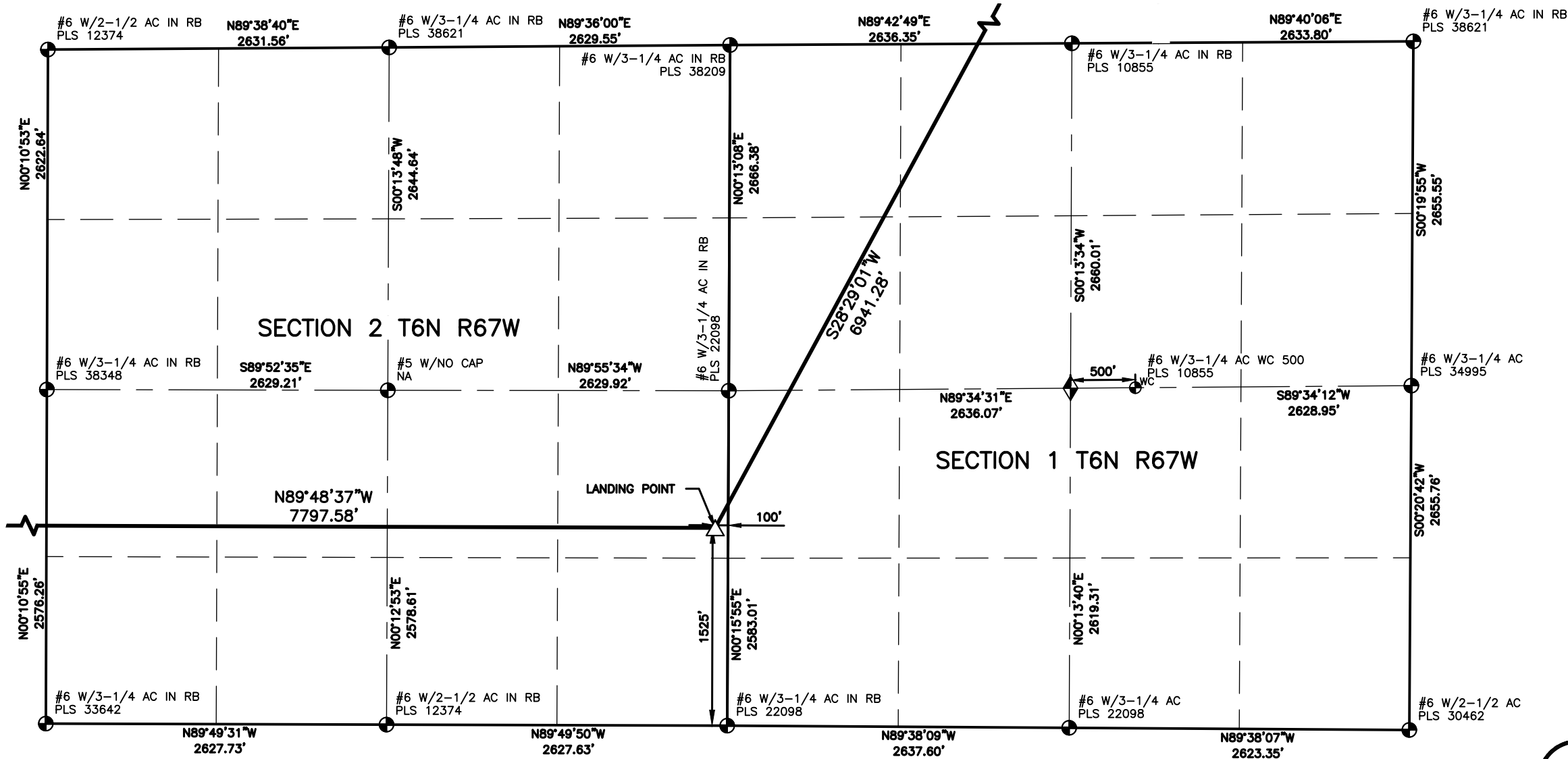
LAMP RYNEARSON.COM



DESIGNER / DRAFTER
JOSH CROAK
REVIEWER
MICHAEL STRATTON
PROJECT NUMBER
0222018.01
DATE
1/23/2025
SURFACE LOCATION
NW/4 SE/4 S36, T7N, R67W
BOOK AND PAGE
SHEET 1 OF 3

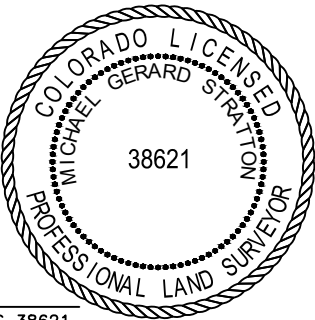
WELL LOCATION PLAT
EXTRACTION OIL & GAS
MAVERICK 2W-20-02

L:\Engineering\0222018 Civitas Inc Map\SURVEY\DRAWINGS\EXHIBITS\WELL PLATS\MAVERICK 2W-20-02\dwg_1/23/2025 9:12:52 AM, MICHAEL STRATTON, LAMP RYNEARSON



LAND SURVEYOR'S CERTIFICATION

LAMP RYNEARSON, INC. OF FT. COLLINS, COLORADO HAS, IN ACCORDANCE WITH A REQUEST FROM TROY OWENS OF EXTRACTION OIL & GAS, DETERMINED THE SURFACE LOCATION OF THE WELL DESIGNATED AS MAVERICK 2W-20-02 TO BE 2360' FROM THE SOUTH LINE AND 2099' FROM THE EAST LINE OF SECTION 36, TOWNSHIP 7 NORTH, RANGE 67 WEST OF THE 6TH P.M., WELD COUNTY, COLORADO.



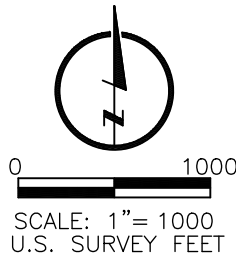
MICHAEL GERARD STRATTON COLORADO PLS 38621
DATE OF SURVEY: 05/30/2023 (SECTION CONTROL)
DATE OF SURVEY: 08/10/2022 (WELL LOCATION)

SURFACE POINT				LANDING POINT				BOTTOM HOLE			
2360'	FSL	2099'	FEL	1525'	FSL	100'	FEL	1378'	FSL	300'	FEL
INFLECTION POINT #1				INFLECTION POINT #2							
1525'	FSL	2580'	FWL	1378'	FSL	900'	FWL				

SURFACE POINT					LANDING POINT		BOTTOM HOLE		INFLECTION POINT 1		INFLECTION POINT 2	
LATITUDE	LONGITUDE	ELEVATION	PDOP	OPERATOR	LATITUDE	LONGITUDE	LATITUDE	LONGITUDE	LATITUDE	LONGITUDE	LATITUDE	LONGITUDE
40.529910	-104.839693	4897	1.810	A.CAUWELS	40.513149	-104.851553	40.512783	-104.889940	40.513172	-104.879589	40.512777	-104.885625

- LEGEND**
- COMPUTED ALIQUOT CORNER
 - ALIQUOT CORNER
 - BOTTOM HOLE
 - ALIQUOT WITNESS CORNER
 - LANDING POINT
 - PROPOSED WELL
 - A.C. ALUMINUM CAP
 - R.B. RANGE BOX
 - CONC. CONCRETE
 - I.C.V.B. IRRIGATION CONTROL VALVE BOX

BASIS OF BEARING:
THE EAST LINE OF THE SOUTHEAST QUARTER OF SECTION 36-T7N-R67W BEARS S00°35'02"W FOR A DISTANCE OF 2641.57' FEET BETWEEN THE EAST QUARTER CORNER OF SECTION 36 MONUMENTED BY A 2-1/2" PIPE WITH A 3-1/4" ALUMINUM CAP STAMPED, "PLS 25619", AND AT THE SOUTHEAST CORNER OF SECTION 36, MONUMENTED BY A #6 REBAR WITH A 3-1/4" ALUMINUM CAP STAMPED, "PLS 38621", BASED ON A LOW DISTORTION PROJECTION DEVELOPED BY LAMP RYNEARSON USING THE NORTH AMERICAN DATUM OF 1983(2011).



- NOTES:**
- DISTANCES ARE MEASURED PERPENDICULAR TO NEAREST SECTION LINE AND ARE SHOWN ON THE SAME SIDE OF THE SECTION LINE WHERE THE WELL IS LOCATED.
 - THIS MAP DOES NOT REPRESENT A MONUMENTED BOUNDARY SURVEY. SIXTEENTH CORNER LOCATIONS ARE COMPUTED, UNLESS OTHERWISE NOTED.
 - BOTTOM HOLE LOCATIONS AND HORIZONTAL COMPLETION ZONE PROVIDED BY OTHERS.
 - ALL REBAR AND CAPS ARE MEASURED IN INCHES.
 - ELEVATIONS ARE BASED ON THE NORTH AMERICAN VERTICAL DATUM OF 1988 AS MEASURED BY GNSS OBSERVATIONS USING GEOID 18.

LAMP RYNEARSON



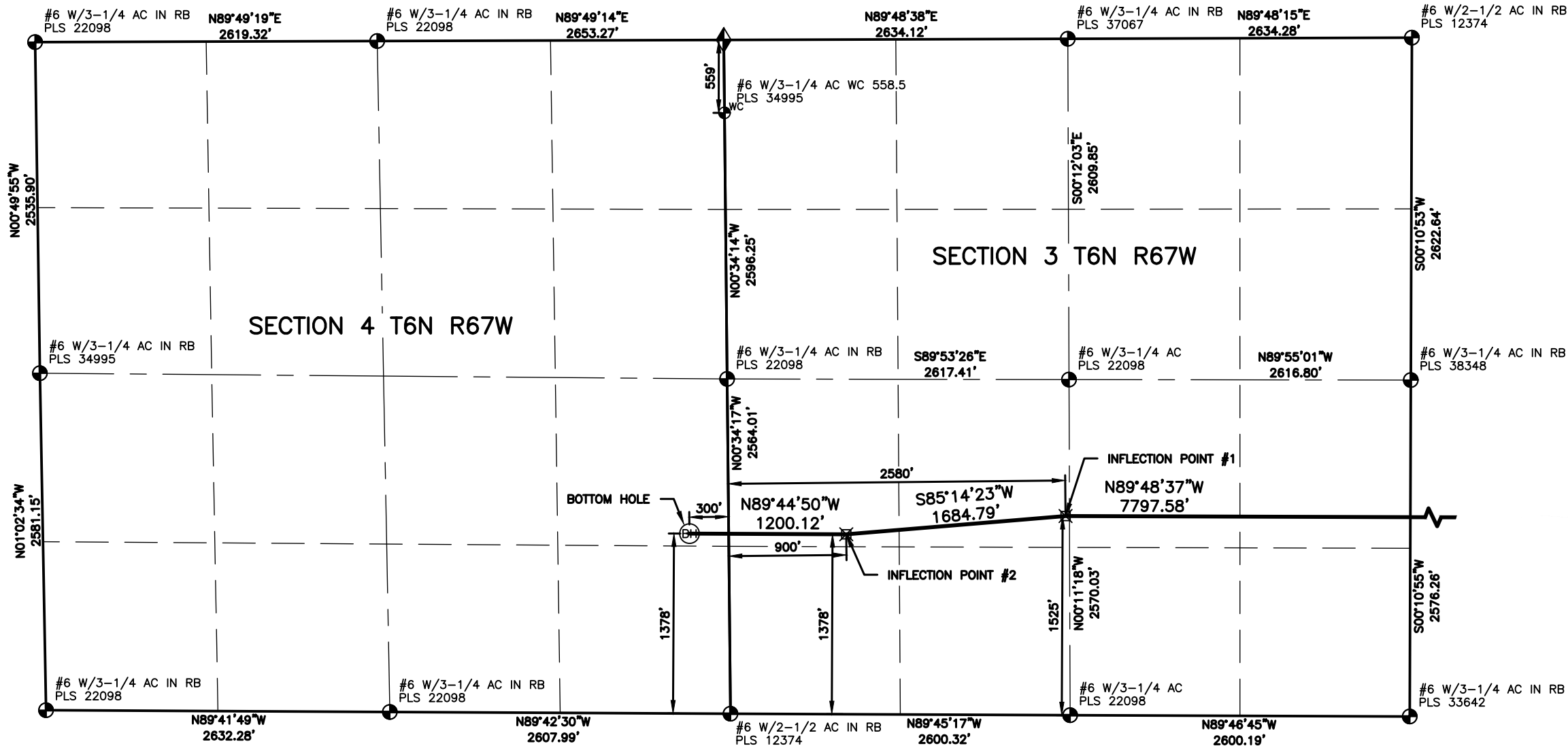
DESIGNER / DRAFTER
JOSH CROAK
REVIEWER
MICHAEL STRATTON
PROJECT NUMBER
0222018.01
DATE
1/23/2025
SURFACE LOCATION
NW/4 SE/4 S36, T7N, R67W
BOOK AND PAGE
SHEET 2 OF 3

WELL LOCATION PLAT

EXTRACTION OIL & GAS

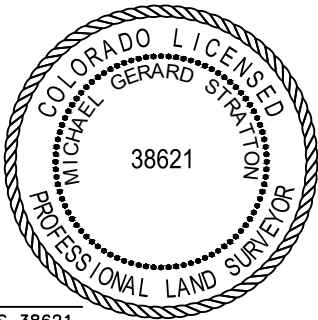
MAVERICK 2W-20-02

L:\Engineering\0222018 Civitas Inc Man\SURVEY\DRAWINGS\EXHIBITS\WELL PLATS\MAVERICK 2W-20-02N.dwg, 1/23/2025 9:12:57 AM, MICHAEL STRATTON, LAMP RYNEARSON



LAND SURVEYOR'S CERTIFICATION

LAMP RYNEARSON, INC. OF FT. COLLINS, COLORADO HAS, IN ACCORDANCE WITH A REQUEST FROM TROY OWENS OF EXTRACTION OIL & GAS, DETERMINED THE SURFACE LOCATION OF THE WELL DESIGNATED AS MAVERICK 2W-20-02 TO BE 2360' FROM THE SOUTH LINE AND 2099' FROM THE EAST LINE OF SECTION 36, TOWNSHIP 7 NORTH, RANGE 67 WEST OF THE 6TH P.M., WELD COUNTY, COLORADO.



MICHAEL GERARD STRATTON COLORADO PLS 38621
DATE OF SURVEY: 05/30/2023 (SECTION CONTROL)
DATE OF SURVEY: 08/10/2022 (WELL LOCATION)

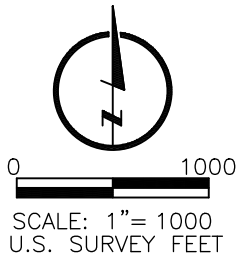
SURFACE POINT				LANDING POINT				BOTTOM HOLE			
2360'	FSL	2099'	FEL	1525'	FSL	100'	FEL	1378'	FSL	300'	FEL
INFLECTION POINT #1				INFLECTION POINT #2							
1525'	FSL	2580'	FWL	1378'	FSL	900'	FWL				

SURFACE POINT					LANDING POINT		BOTTOM HOLE		INFLECTION POINT 1		INFLECTION POINT 2	
LATITUDE	LONGITUDE	ELEVATION	PDOP	OPERATOR	LATITUDE	LONGITUDE	LATITUDE	LONGITUDE	LATITUDE	LONGITUDE	LATITUDE	LONGITUDE
40.529910	-104.839693	4897	1.810	A.CAUWELS	40.513149	-104.851553	40.512783	-104.889940	40.513172	-104.879589	40.512777	-104.885625

LEGEND			
◆	COMPUTED ALIQUOT CORNER	⊙	PROPOSED WELL
⊙	ALIQUOT CORNER	A.C.	ALUMINUM CAP
⊙	BOTTOM HOLE	R.B.	RANGE BOX
⊙	ALIQUOT WITNESS CORNER	CONC.	CONCRETE
△	LANDING POINT	I.C.V.B.	IRRIGATION CONTROL VALVE BOX

BASIS OF BEARING:

THE EAST LINE OF THE SOUTHEAST QUARTER OF SECTION 36-T7N-R67W BEARS S00°35'02"W FOR A DISTANCE OF 2641.57' FEET BETWEEN THE EAST QUARTER CORNER OF SECTION 36 MONUMENTED BY A 2-1/2" PIPE WITH A 3-1/4" ALUMINUM CAP STAMPED, "PLS 25619", AND AT THE SOUTHEAST CORNER OF SECTION 36, MONUMENTED BY A #6 REBAR WITH A 3-1/4" ALUMINUM CAP STAMPED, "PLS 38621", BASED ON A LOW DISTORTION PROJECTION DEVELOPED BY LAMP RYNEARSON USING THE NORTH AMERICAN DATUM OF 1983(2011).



NOTES:

- DISTANCES ARE MEASURED PERPENDICULAR TO NEAREST SECTION LINE AND ARE SHOWN ON THE SAME SIDE OF THE SECTION LINE WHERE THE WELL IS LOCATED.
- THIS MAP DOES NOT REPRESENT A MONUMENTED BOUNDARY SURVEY. SIXTEENTH CORNER LOCATIONS ARE COMPUTED, UNLESS OTHERWISE NOTED.
- BOTTOM HOLE LOCATIONS AND HORIZONTAL COMPLETION ZONE PROVIDED BY OTHERS.
- ALL REBAR AND CAPS ARE MEASURED IN INCHES.
- ELEVATIONS ARE BASED ON THE NORTH AMERICAN VERTICAL DATUM OF 1988 AS MEASURED BY GNSS OBSERVATIONS USING GEOID 18.

LAMP RYNEARSON

LAMP RYNEARSON.COM



DESIGNER / DRAFTER

JOSH CROAK

REVIEWER

MICHAEL STRATTON

PROJECT NUMBER

0222018.01

DATE

1/23/2025

SURFACE LOCATION

NW/4 SE/4 S36, T7N, R67W

BOOK AND PAGE

SHEET 3 OF 3

WELL LOCATION PLAT

EXTRACTION OIL & GAS

MAVERICK 2W-20-02