

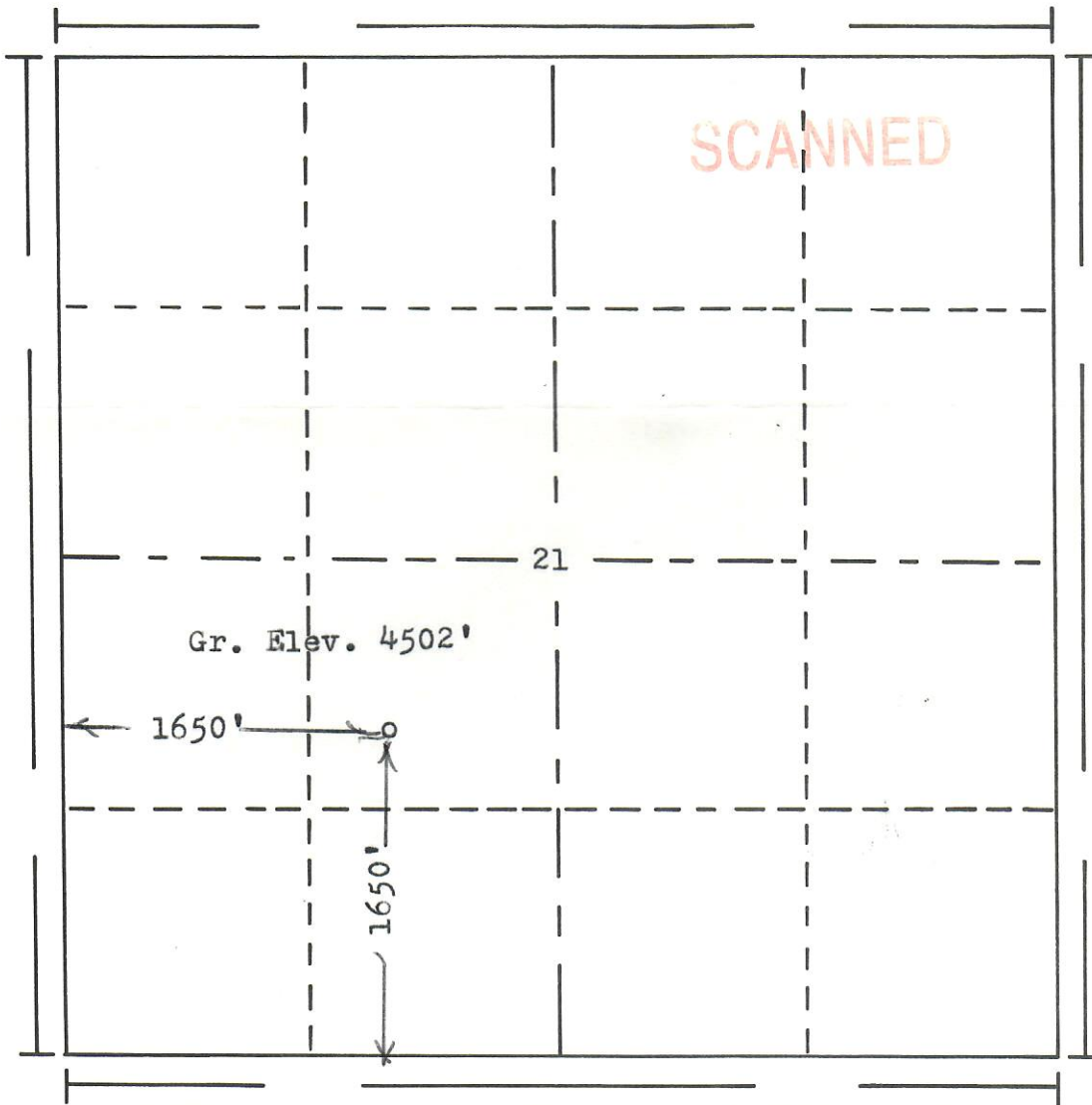


FORM F-106



RECEIVED
MAR 30 1977
OIL & GAS CONS. COMM.

R. 54W



T.
2
N

Scale... 1" = 1000'

Powers Elevation Company, Inc. of Denver, Colorado
has in accordance with a request from Mr. Brown
for Amarex

determined the location of No. ? ?
to be CSW NE SW Section 21 Township 2N
Range 54W of the 6th Principal Meridian
Washington County, Colorado

I hereby certify that this plat is an
accurate representation of a correct
survey showing the location of

Date: 3-24-77

Bruce J. Holladay
Licensed Land Surveyor No. 2853
State of Colorado

X