
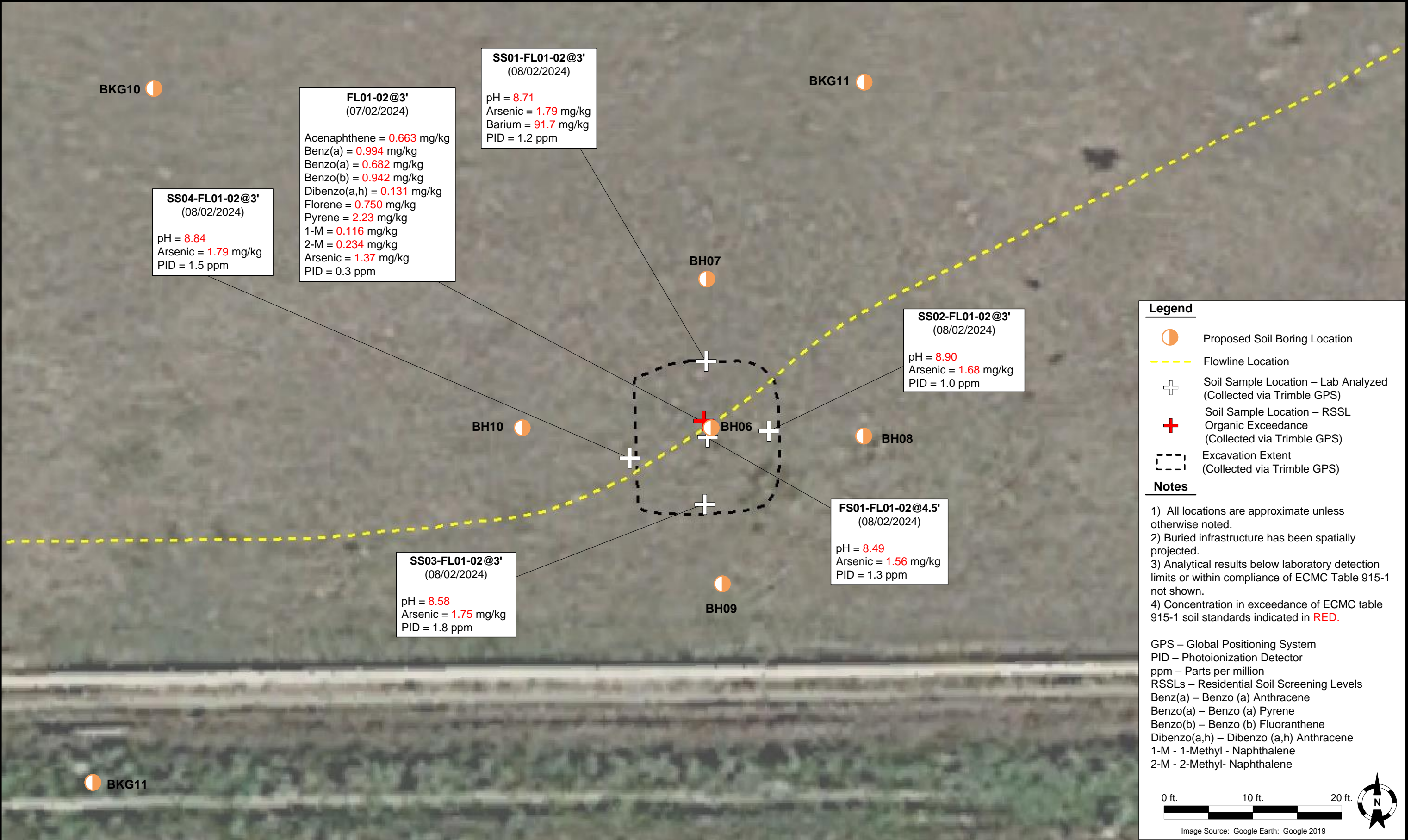



DATE:	01/17/2025	 <div>Tasman, Inc. 6855 W 119th Avenue Broomfield, CO 80020</div>	Noble Energy, Inc. – 100322 – DJ Basin Johnson C 29-28 SESW, Section 20, Township 4 North, Range 64 West Weld County, Colorado	Proposed Soil Boring Locations	FIGURE 1
DESIGNED BY:	JW				
DRAWN BY:	D. Gray				



DATE:	09/05/2024	 TASMAN Tasman, Inc. 6855 W 119 th Avenue Broomfield, CO 80020	Noble Energy, Inc. – 100322 – DJ Basin Johnson C 29-28 SESW, Section 20, Township 4 North, Range 64 West Weld County, Colorado	Proposed Soil Boring Locations	FIGURE 2
DESIGNED BY:	JW				
DRAWN BY:	L. Bohannon				