

# WELL LOCATION MAP

SECTION 30 TOWNSHIP 13 S RANGE 47 W

NORTH  
1" = 1000'

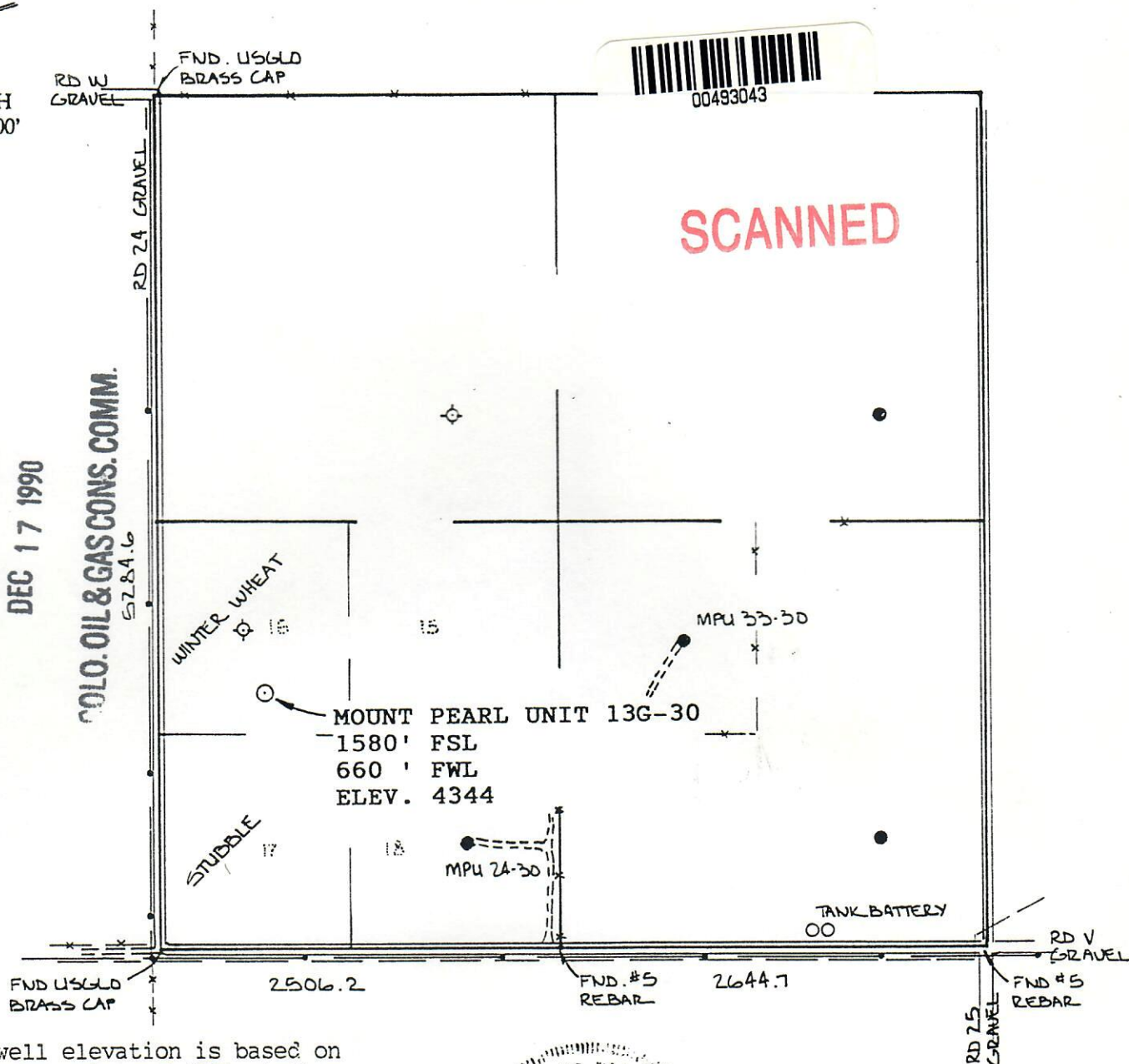


SCANNED

RECEIVED

DEC 17 1990

COLO. OIL & GAS CONS. COMM.



Note; well elevation is based on a spot elevation of 4361 at the NW corner of Section 30.

## Legend:

- set well location
- x — fence line
- • — power line
- - - pipeline
- producing wells
- dry hole
- 16 lot 16 USGLO plat

Note: This is not a land survey or land survey plat.

Job # 5107-82

## GEOSURV

E. J. Grabowski  
PO Box 194  
Lafayette, CO 80026  
303-666-0379

Scale	1" = 1000'
Surveyed	EJG 9-90
Field Book	6
Calculated	EJG 9-90
Drawn	EJG 9-90

## UNION PACIFIC RESOURCES

MOUNT PEARL UNIT 13G-30

SW 1/4

Section 30, T13S, R47W, 6 PM  
Cheyenne County, Colorado