

Signage condition is adequate. However, Operator has previously directed ECMC staff to call (303) 833-5670 instead to report emergencies.

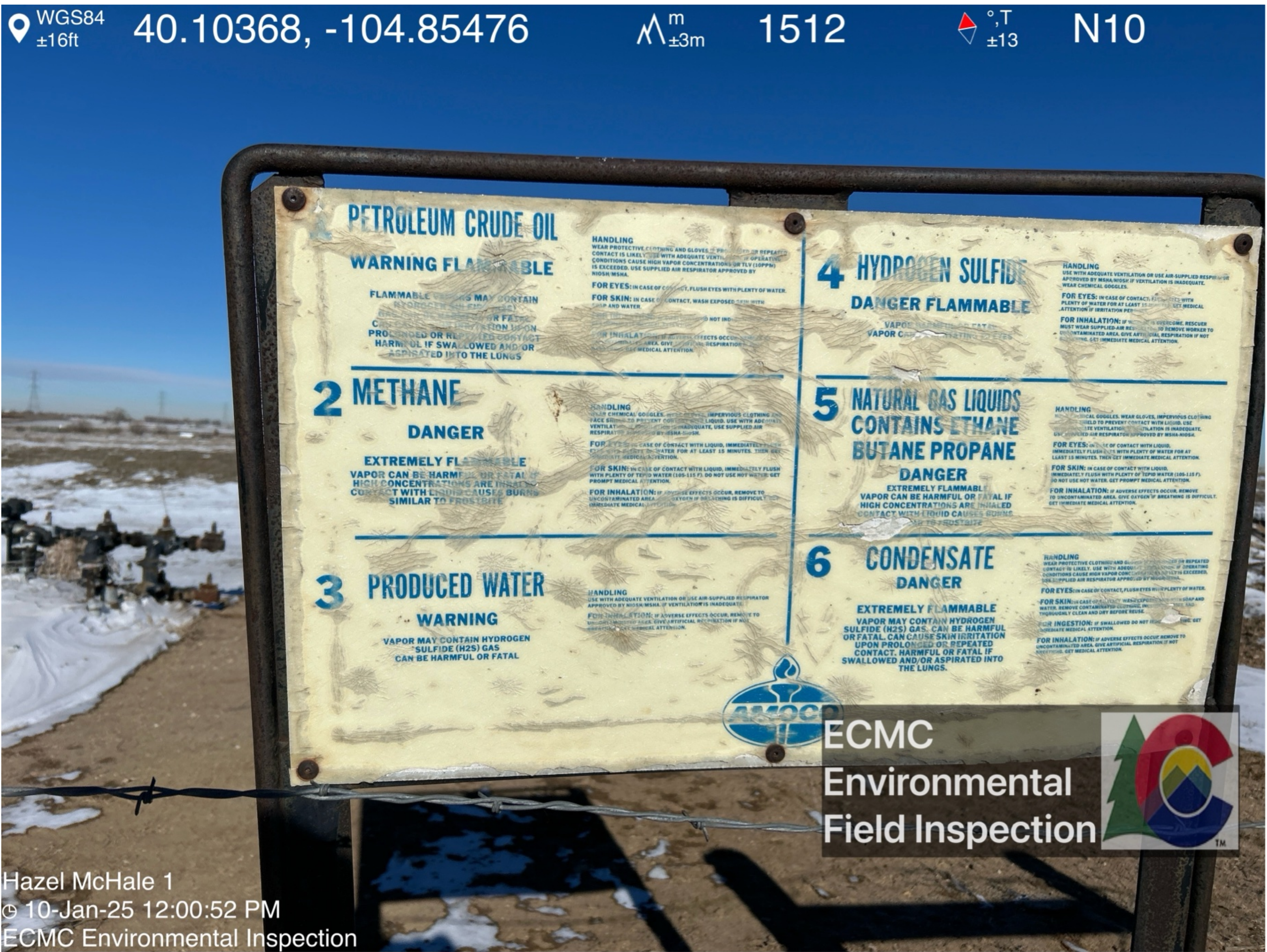


Fencing surrounding tank containment, ancillary equipment, separator, and spill area observed open and in poor condition. Debris observed.

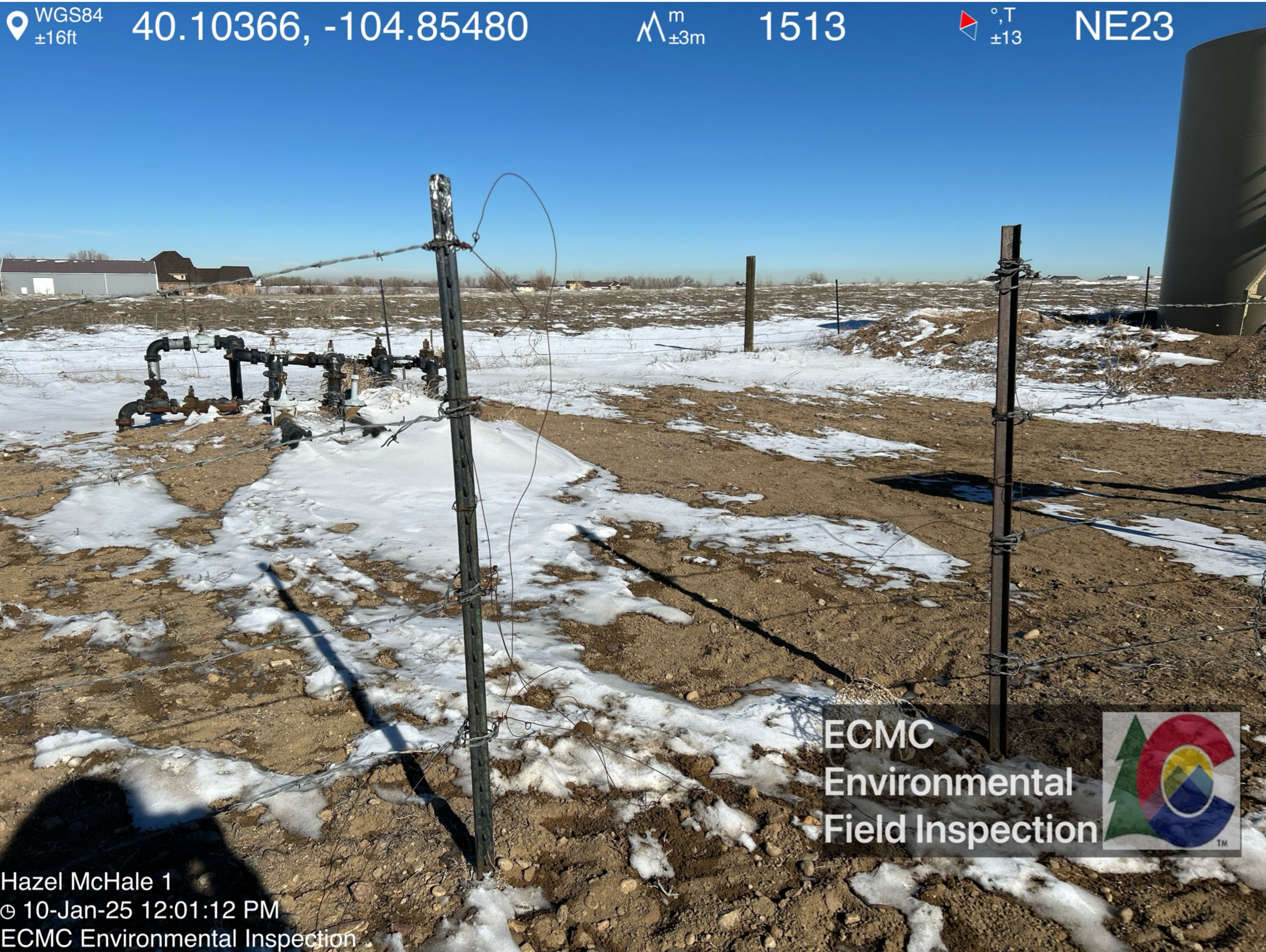




Sign illegible and references a different Operator.



Fencing surrounding tank containment, ancillary equipment, separator, and spill area observed open and in poor condition.



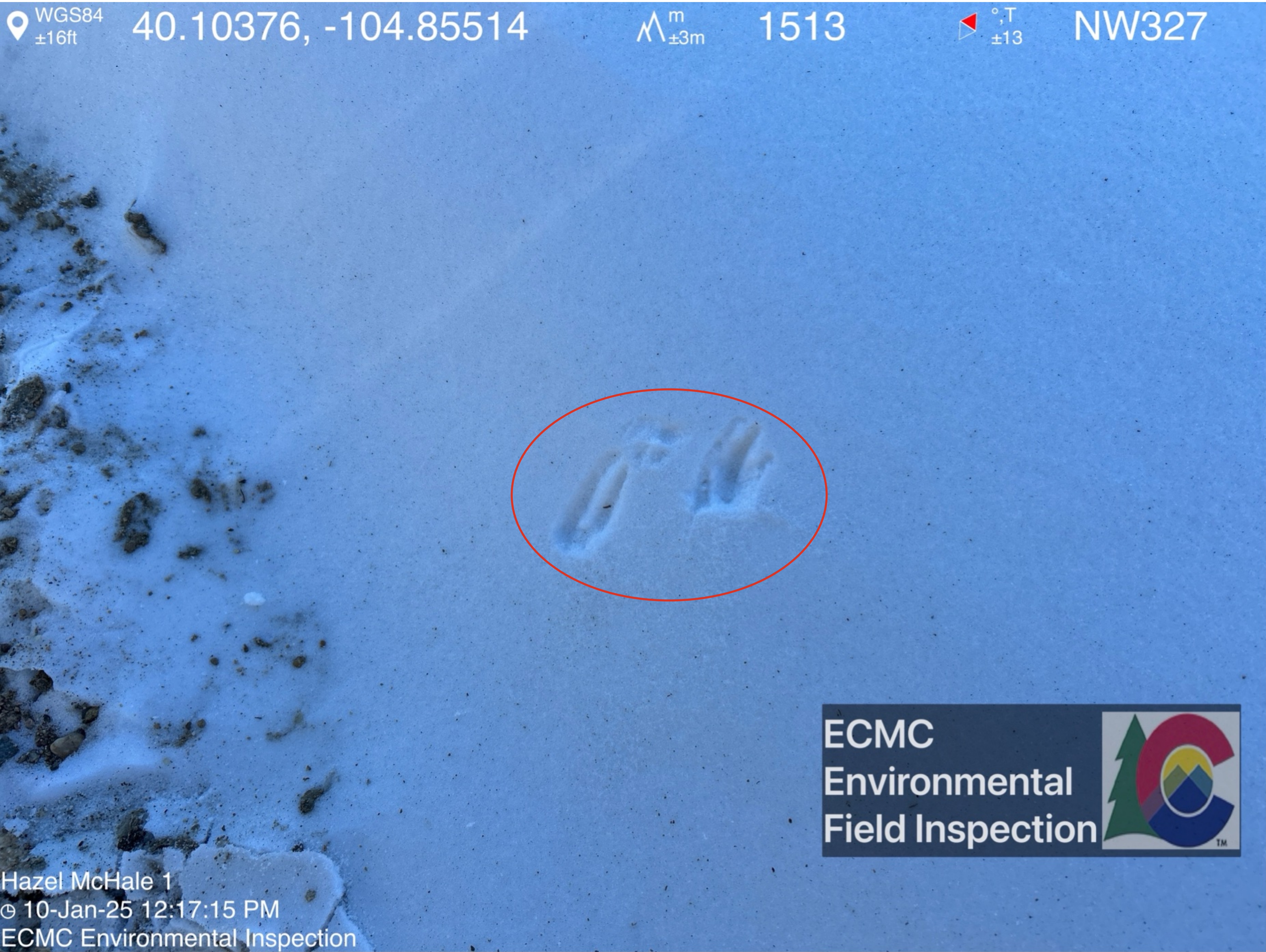


Fencing surrounding tank containment, ancillary equipment, separator, and spill area observed open and in poor condition.





Wildlife tracks observed adjacent to spill location.



Wildlife tracks observed adjacent to spill location.

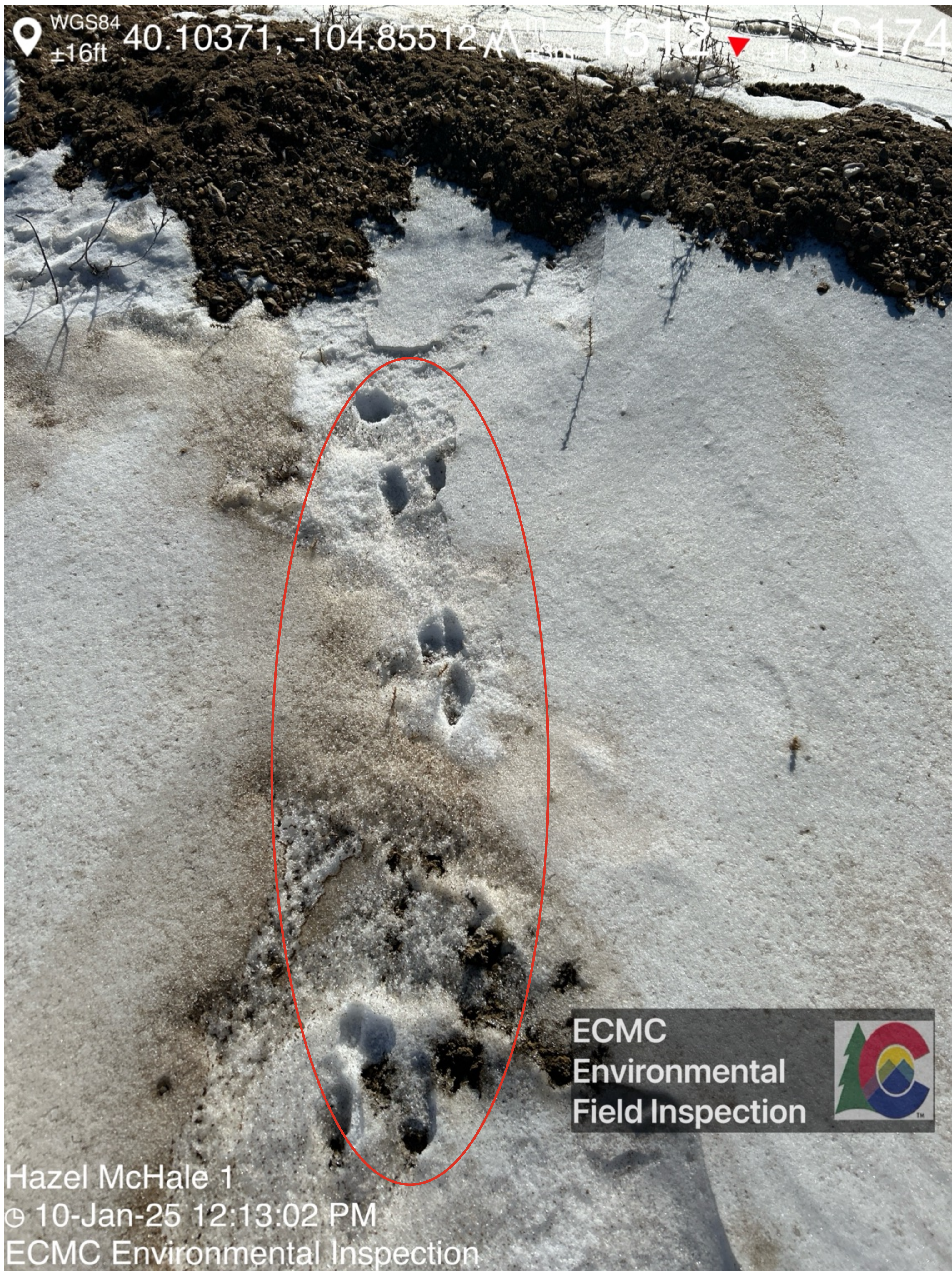




Livestock tracks observed adjacent to spill location.



Wildlife tracks observed adjacent to spill location.





Livestock tracks observed adjacent to spill location.

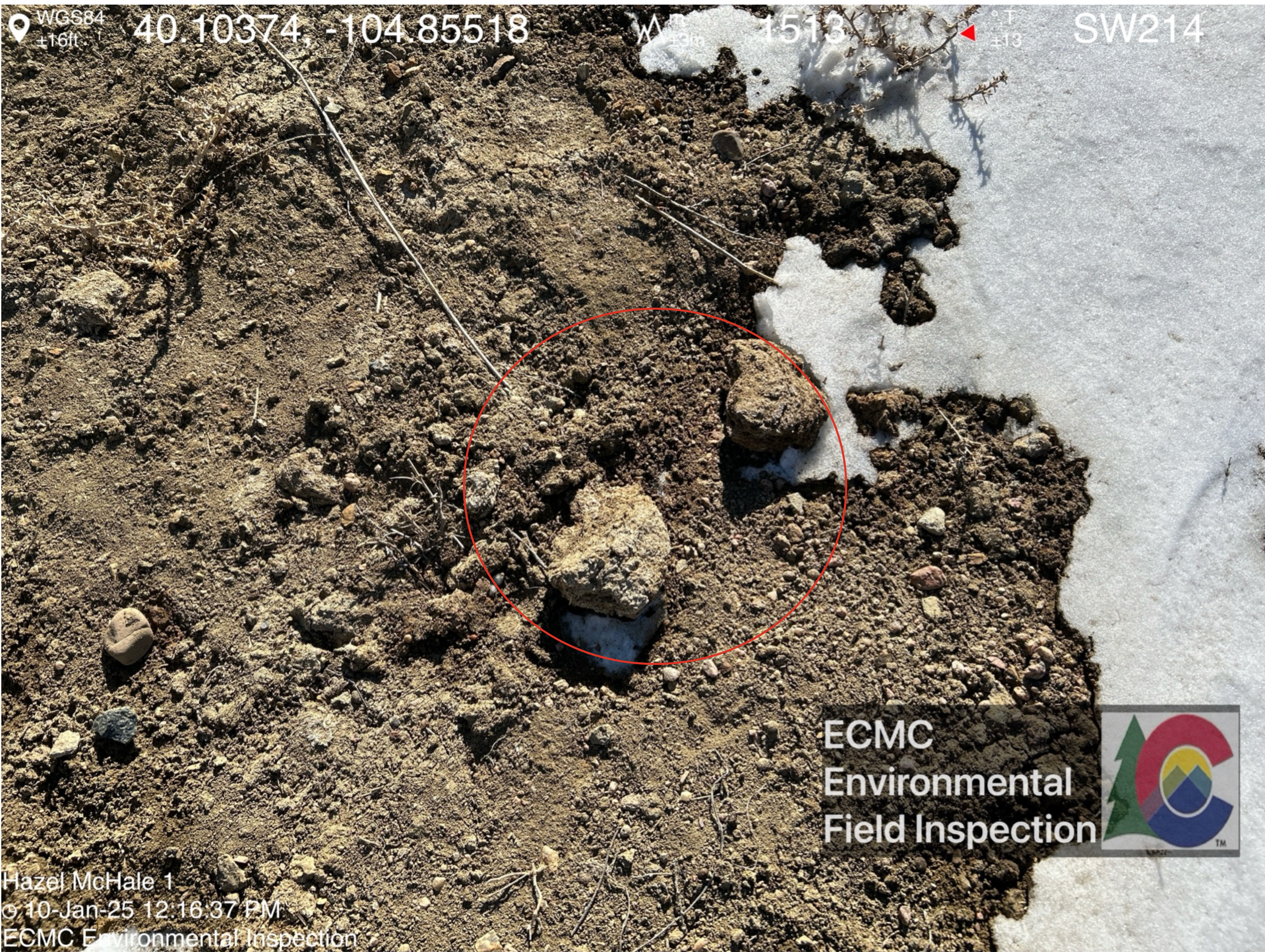


Livestock manure observed adjacent to spill location.

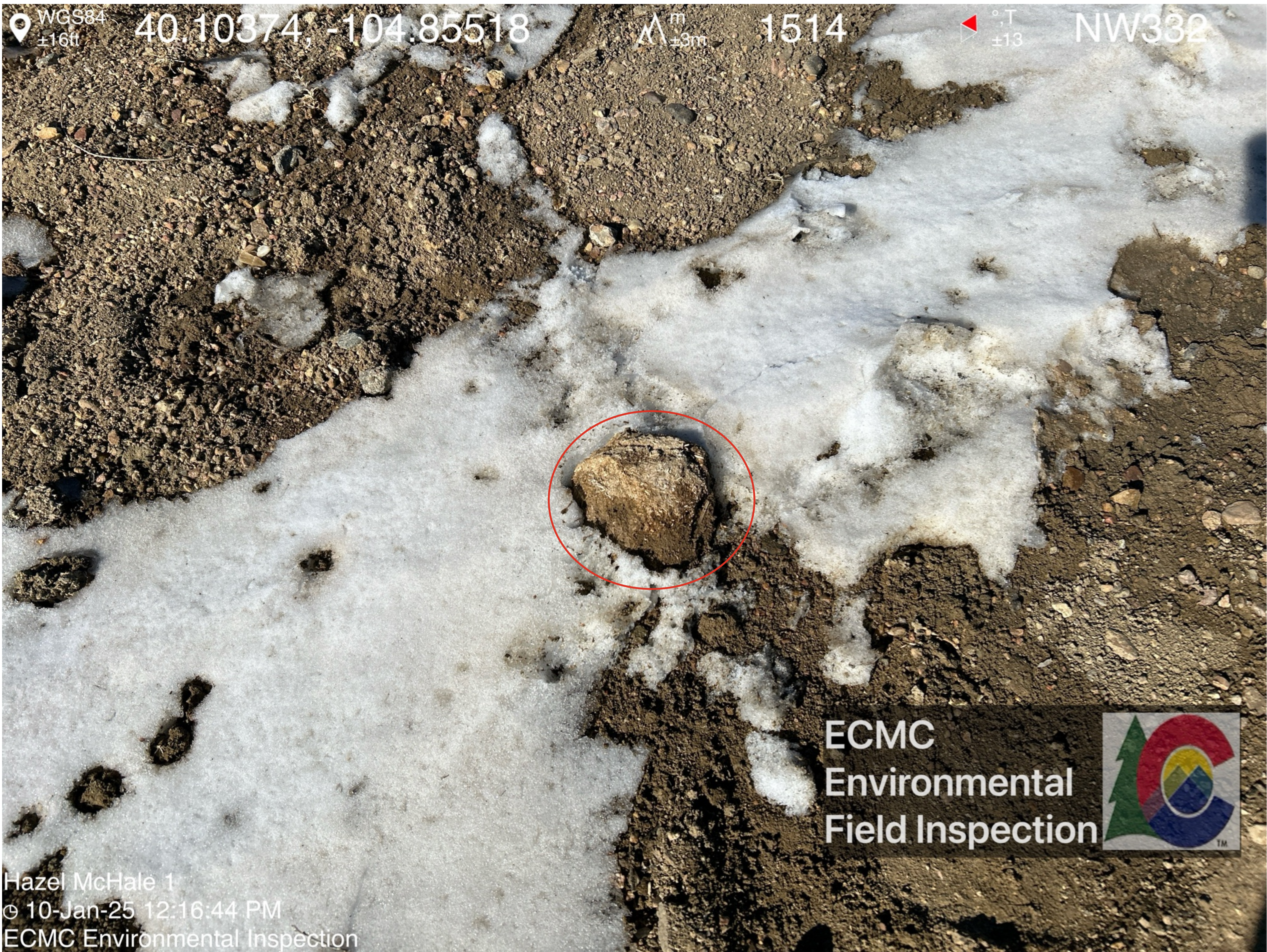




Livestock manure observed adjacent to spill location.



Livestock manure observed adjacent to spill location.





Approximate spill location. Petroleum hydrocarbon odor observed in the vicinity of the separator, increasing in strength when soil was disturbed by walking.

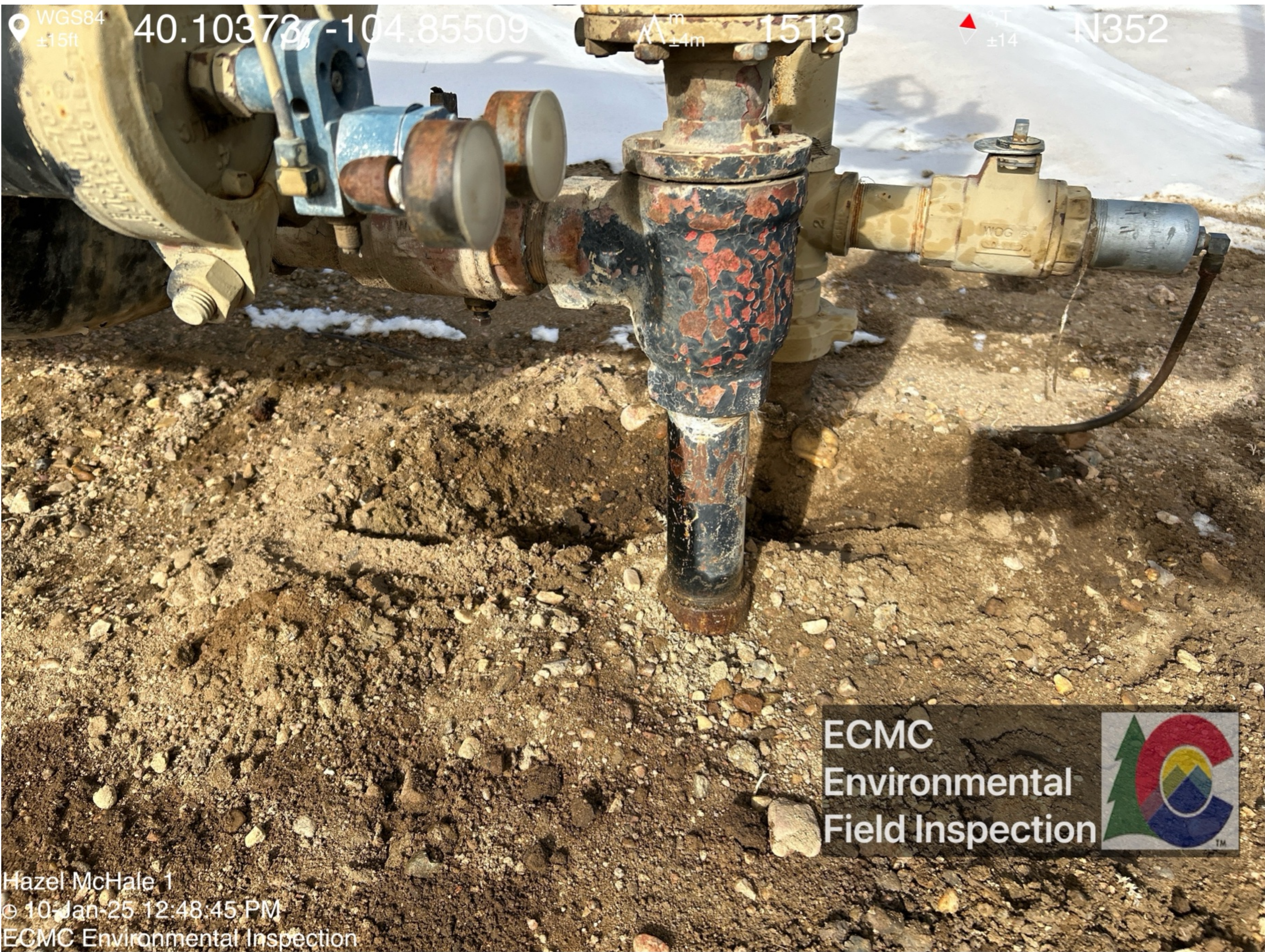


Approximate spill location. Very strong petroleum hydrocarbon odor observed. Petroleum hydrocarbon staining observed under a thin layer of unstained fill material. Soil sample location SS-01@0-6".





Approximate spill location. Very strong petroleum hydrocarbon odor observed. Petroleum hydrocarbon staining observed under a thin layer of unstained fill material.



Approximate spill location. Very strong petroleum hydrocarbon odor observed when soil was disturbed. Petroleum hydrocarbon staining observed under a thin layer of unstained fill material. Soil sample location SS-02@0-6".





Approximate spill location. Very strong petroleum hydrocarbon odor observed when soil was disturbed. Petroleum hydrocarbon staining observed under a thin layer of unstained fill material. Soil sample location SS-02@0-6".

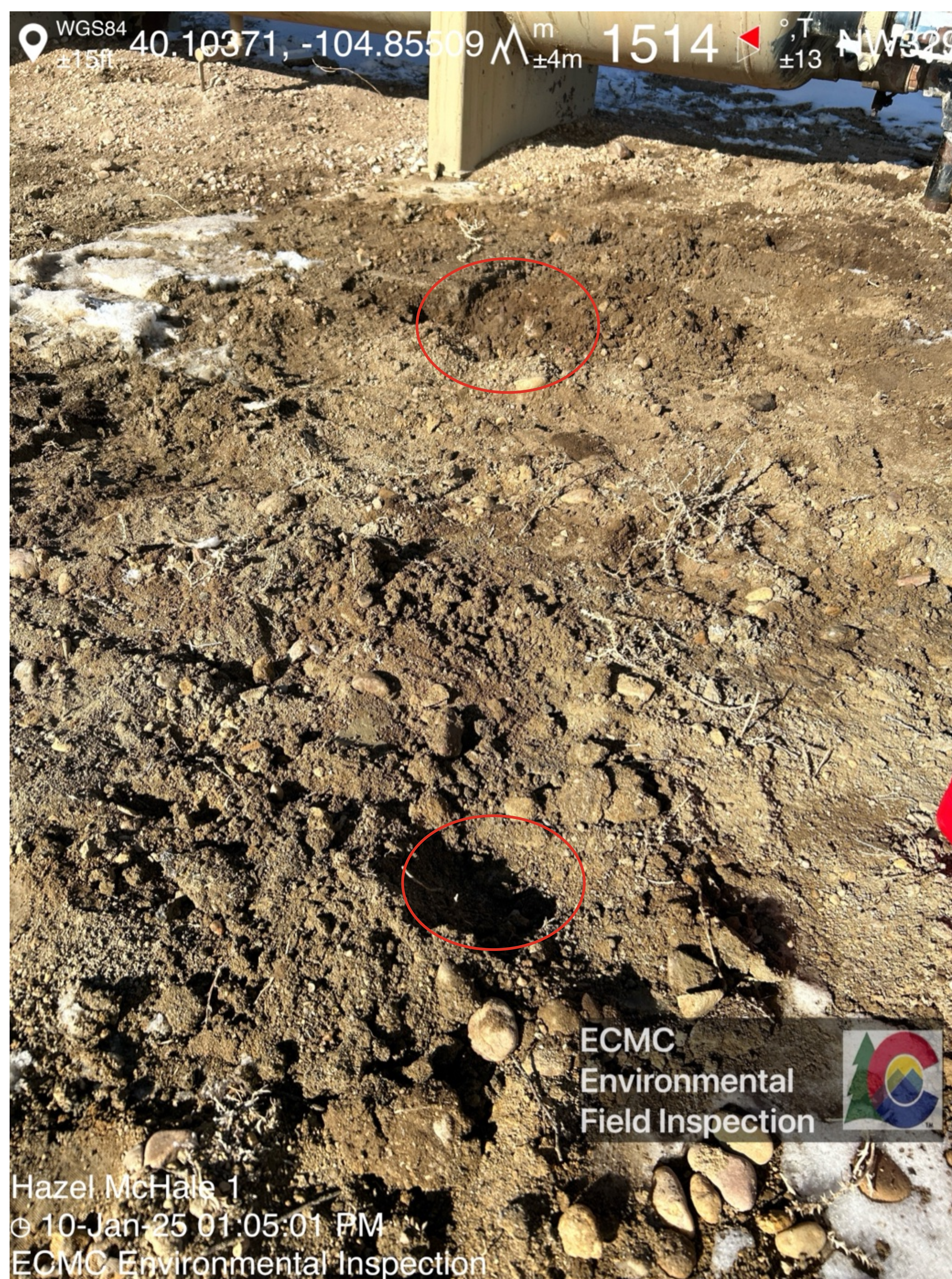


Approximate spill location. Soil sample location SS-02@0-6" visible in foreground and SS-01@0-6" visible in background.

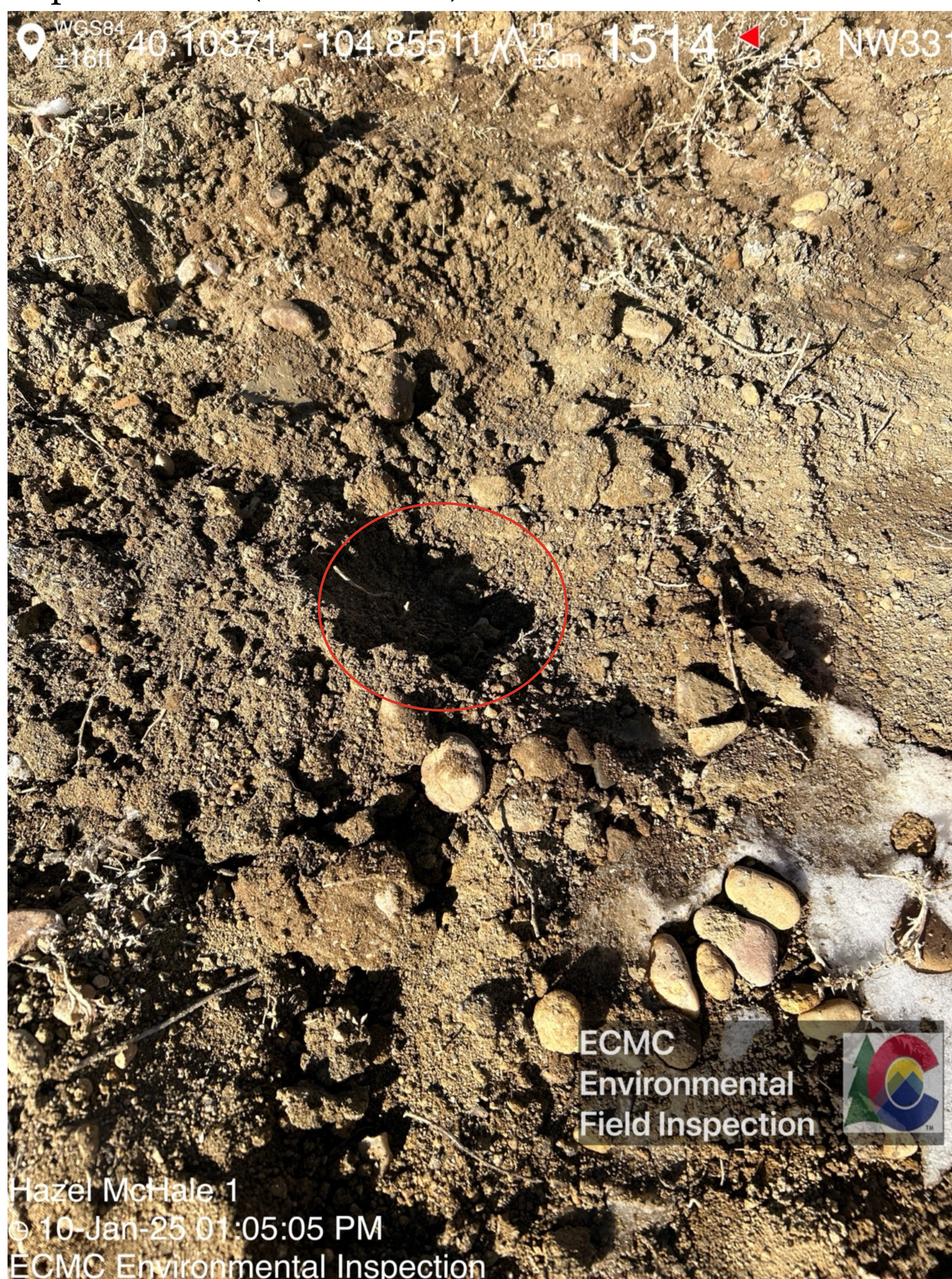




Approximate spill location. Soil sample location SS-03@0-6" visible in foreground and SS-02@0-6" visible in background.

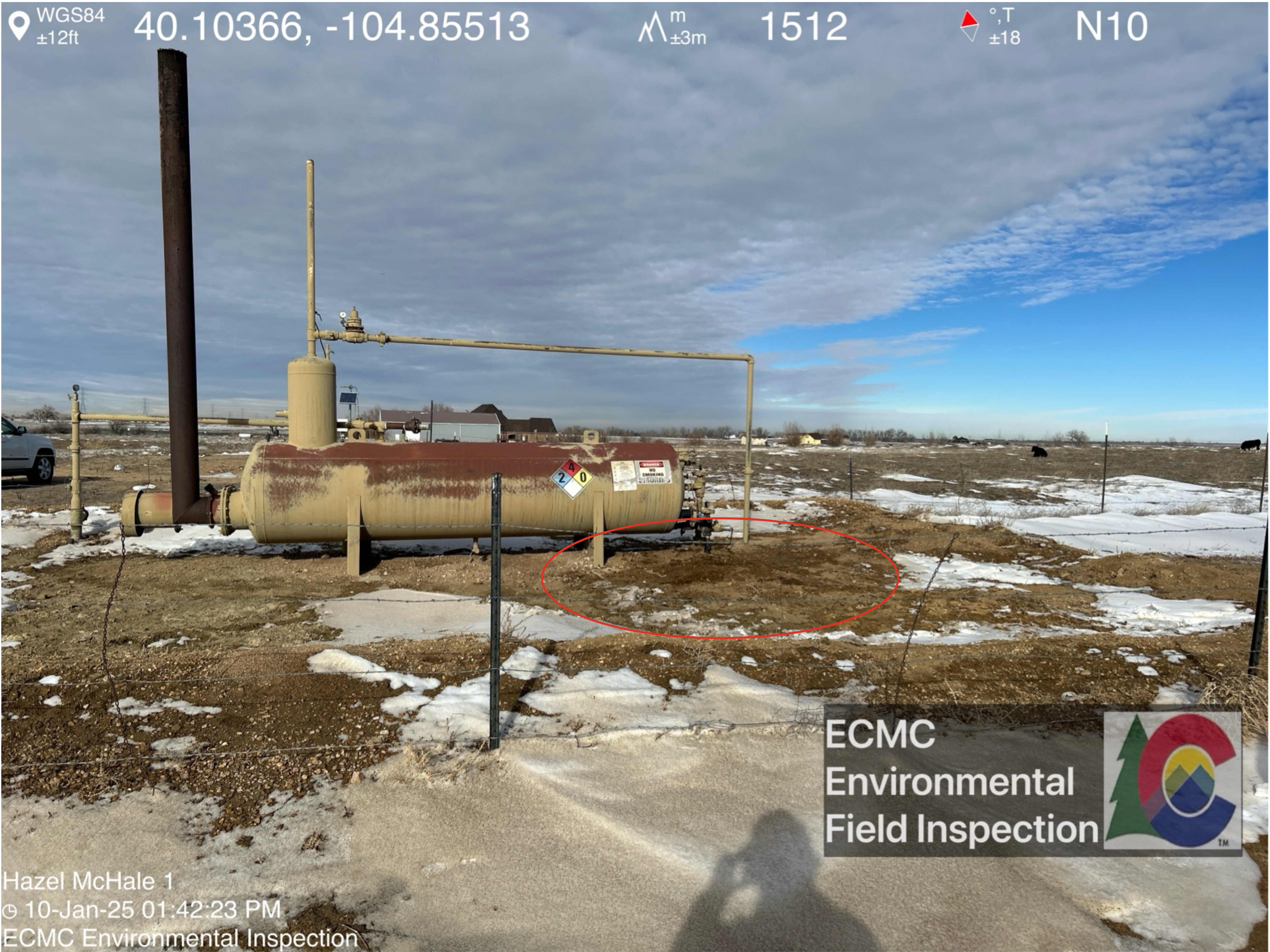


Approximate spill location. Slight petroleum hydrocarbon odor observed when soil was disturbed. Petroleum hydrocarbon staining observed under a thin layer of unstained fill material. Soil sample location (SS-03@0-6").

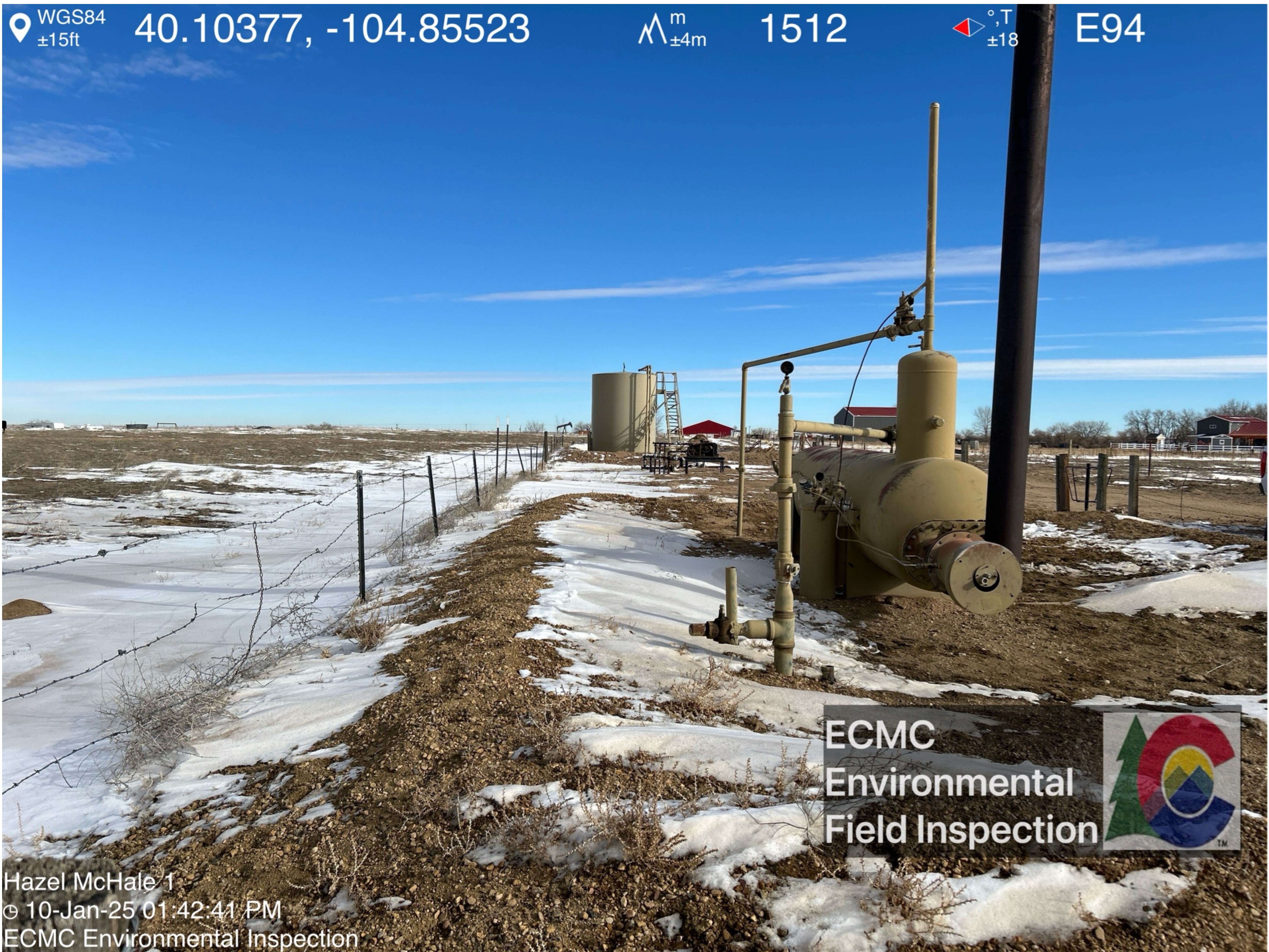




Approximate spill location.



Fencing surrounding tank containment, ancillary equipment, separator, and spill area observed open and in poor condition.







Vegetation was observed present in the surrounding area but absent immediately adjacent to the produced water vault.

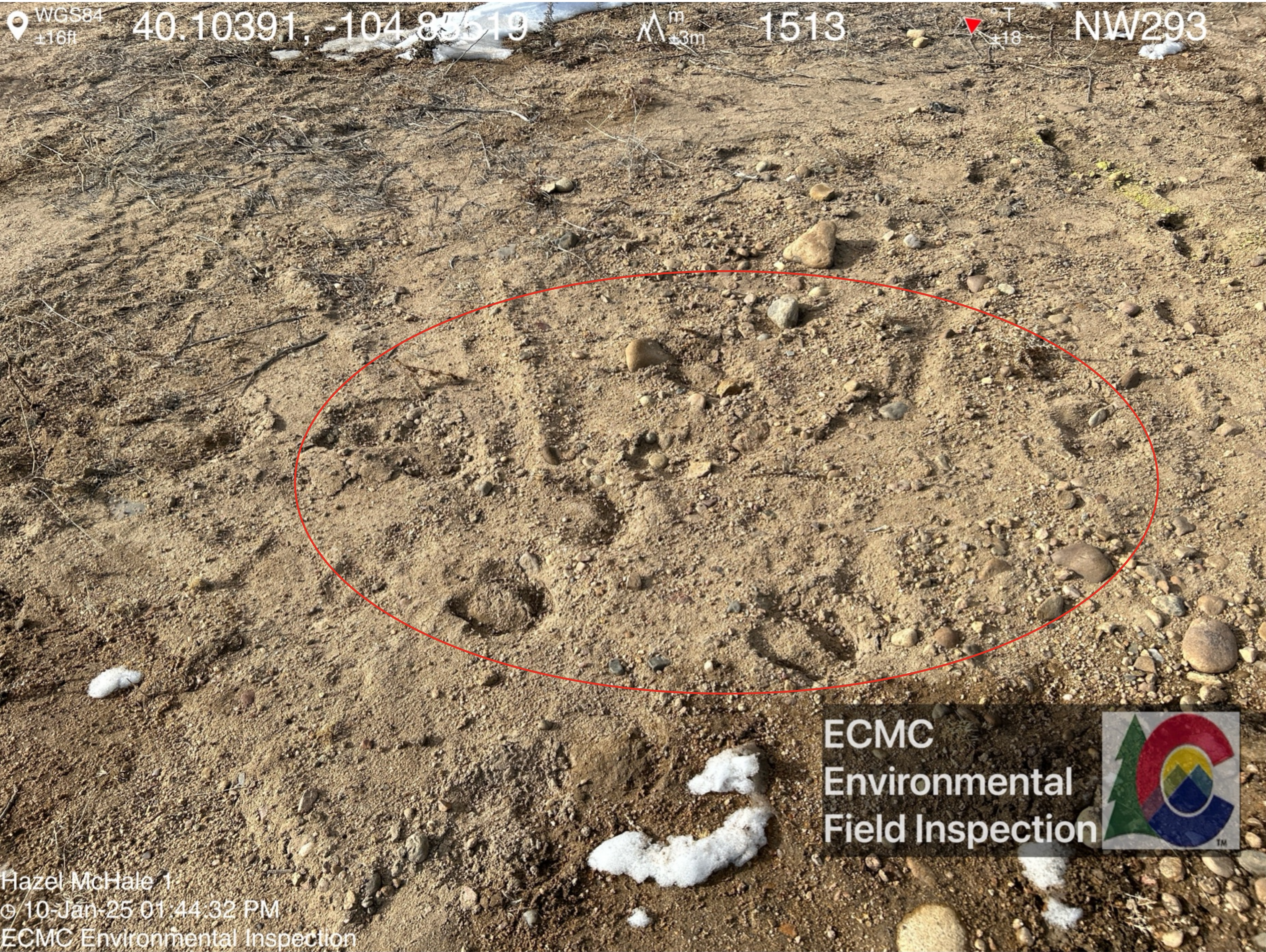




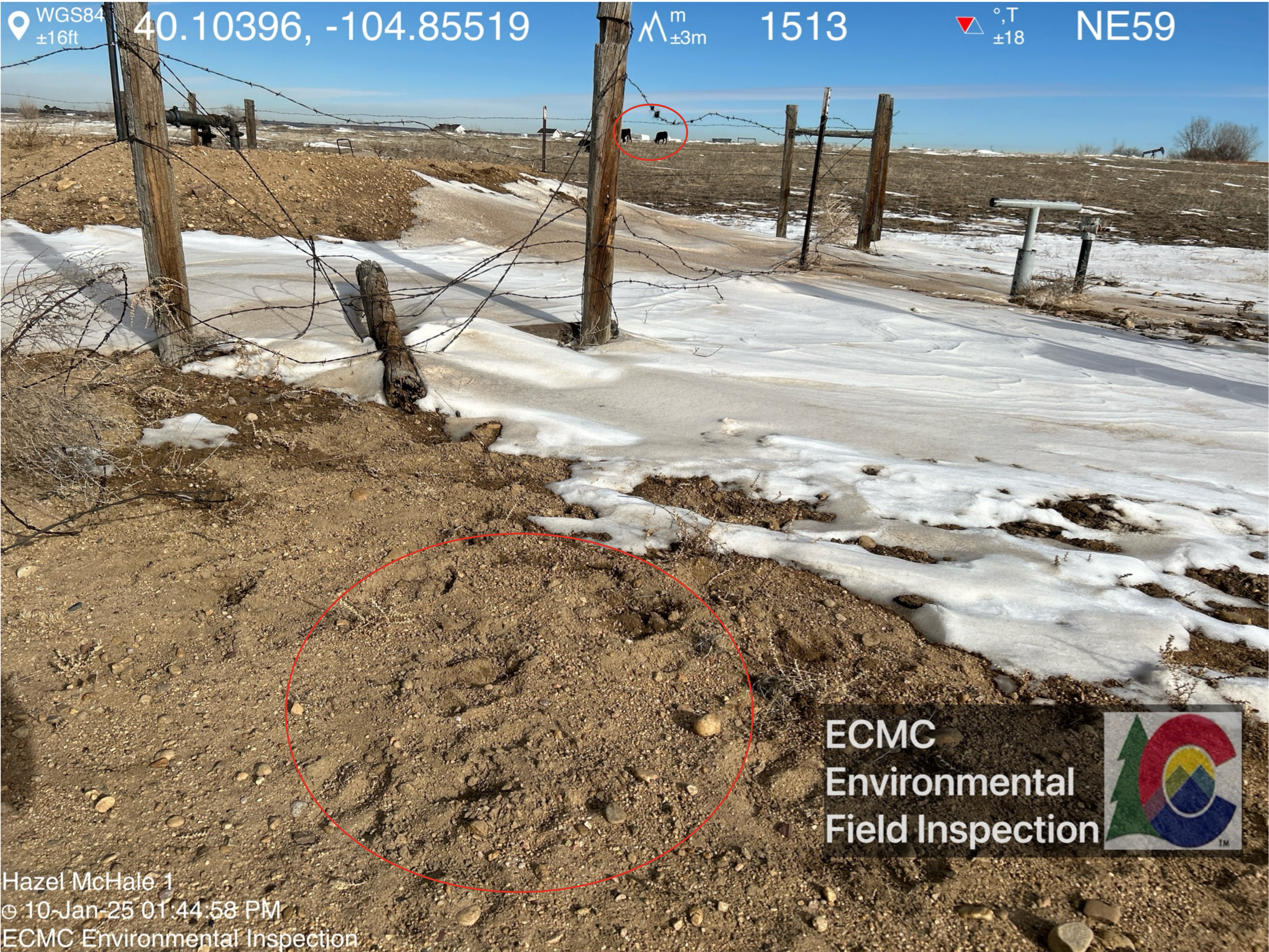




Livestock tracks adjacent to the produced water vault.

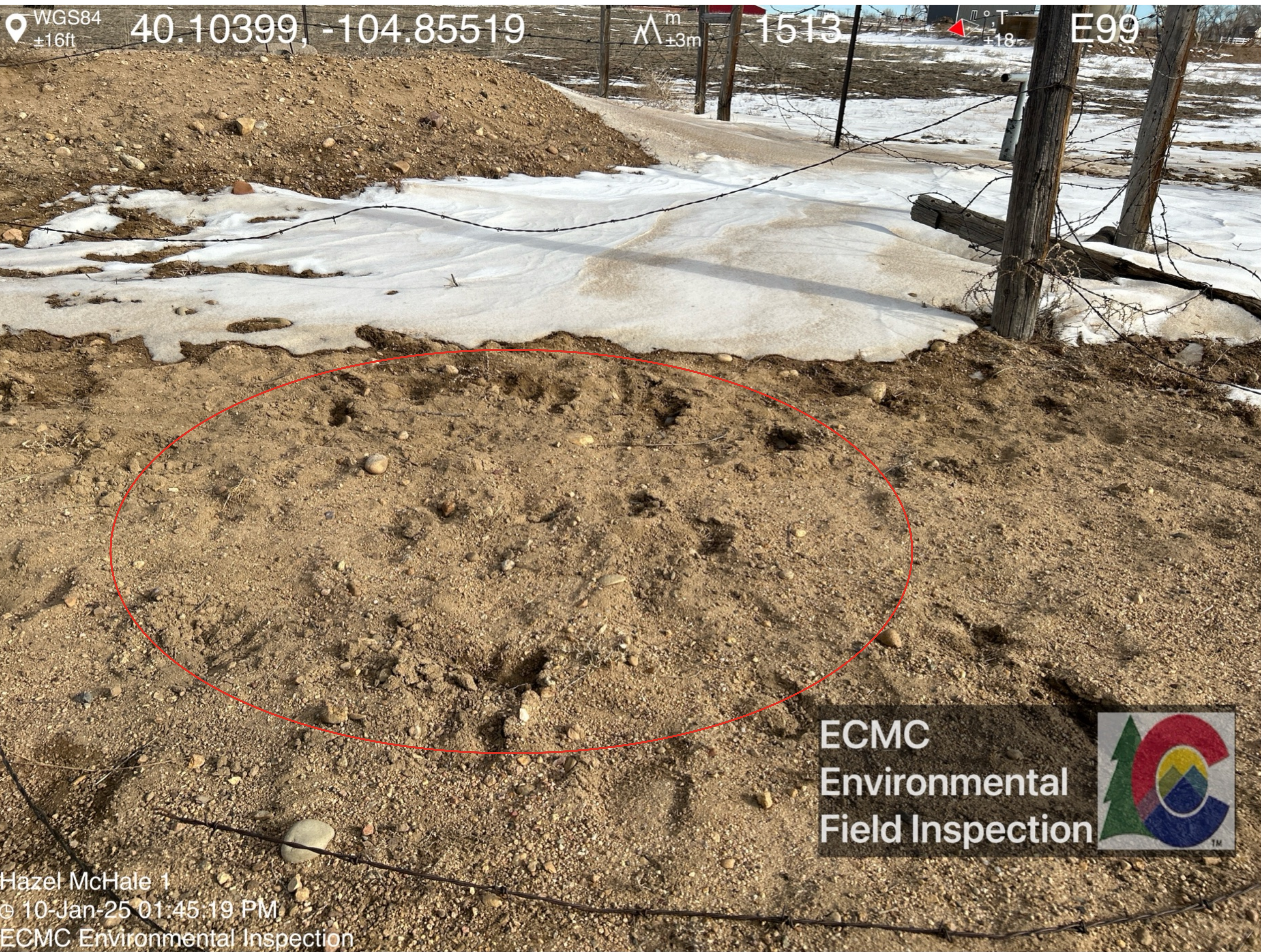


Fencing in poor condition. Livestock tracks adjacent to the produced water vault.

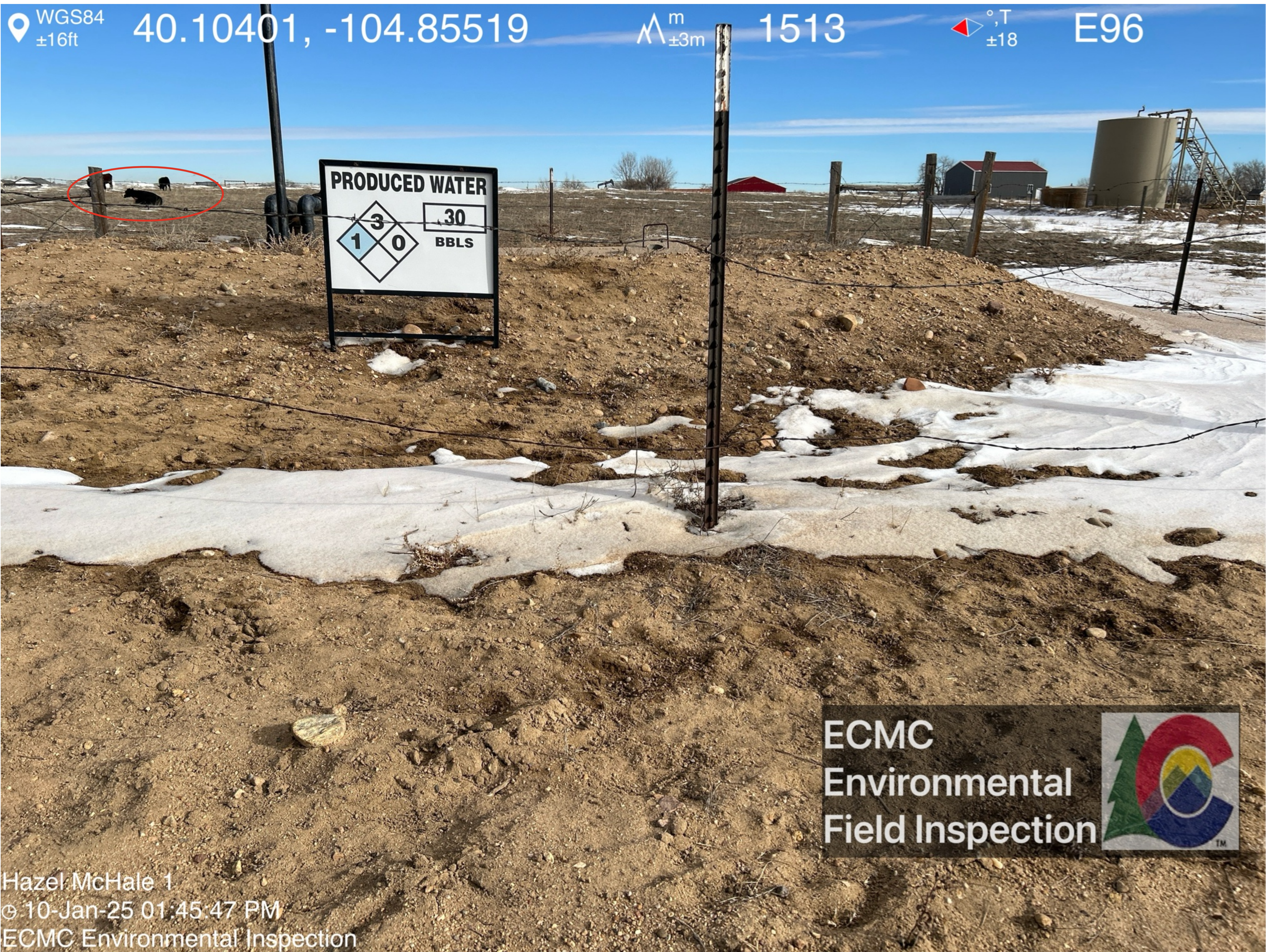




Fencing in poor condition. Livestock tracks adjacent to the produced water vault.

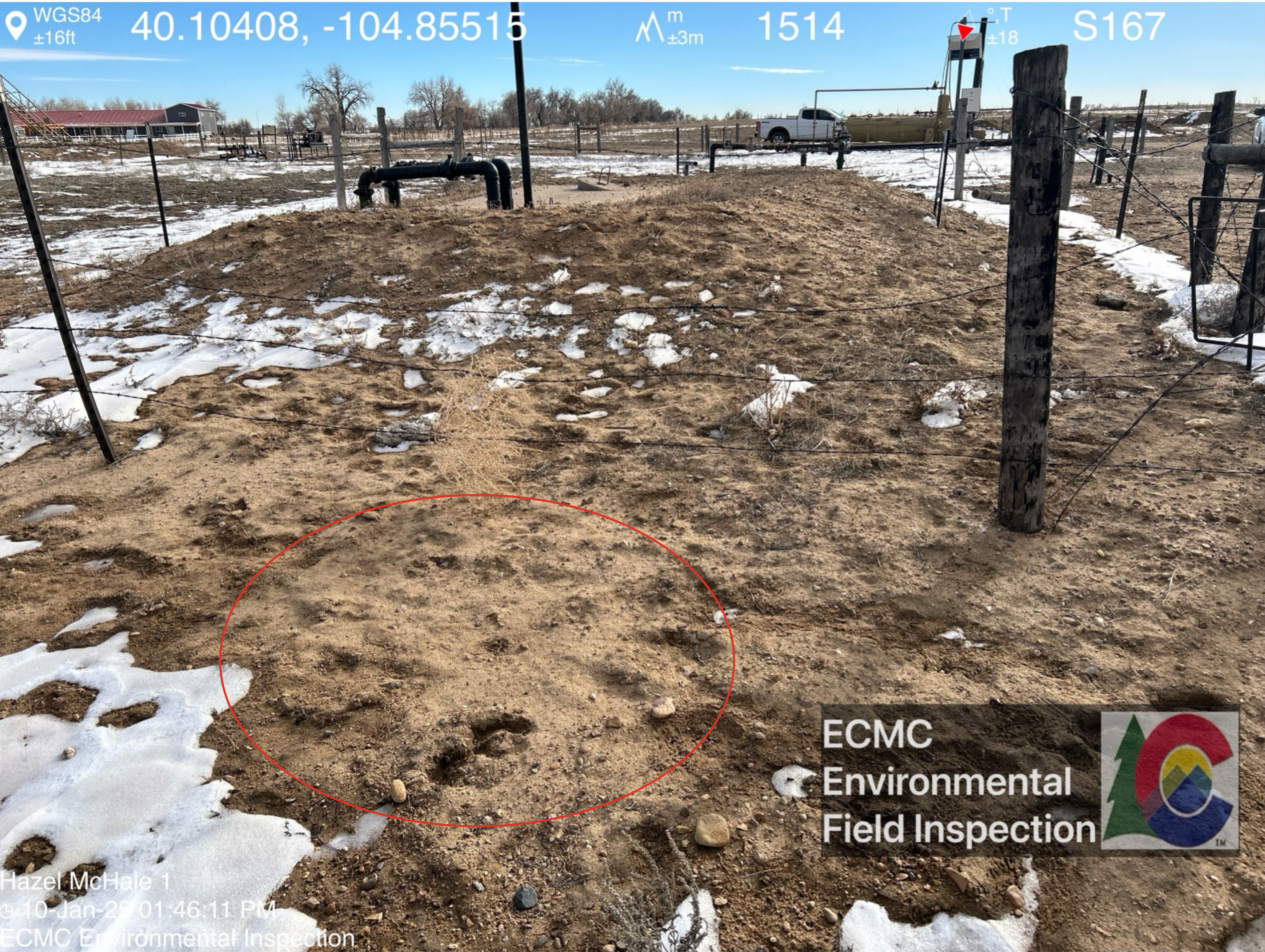


Livestock and livestock tracks adjacent to the produced water vault.





Livestock tracks adjacent to the produced water vault.



Livestock observed adjacent to location.

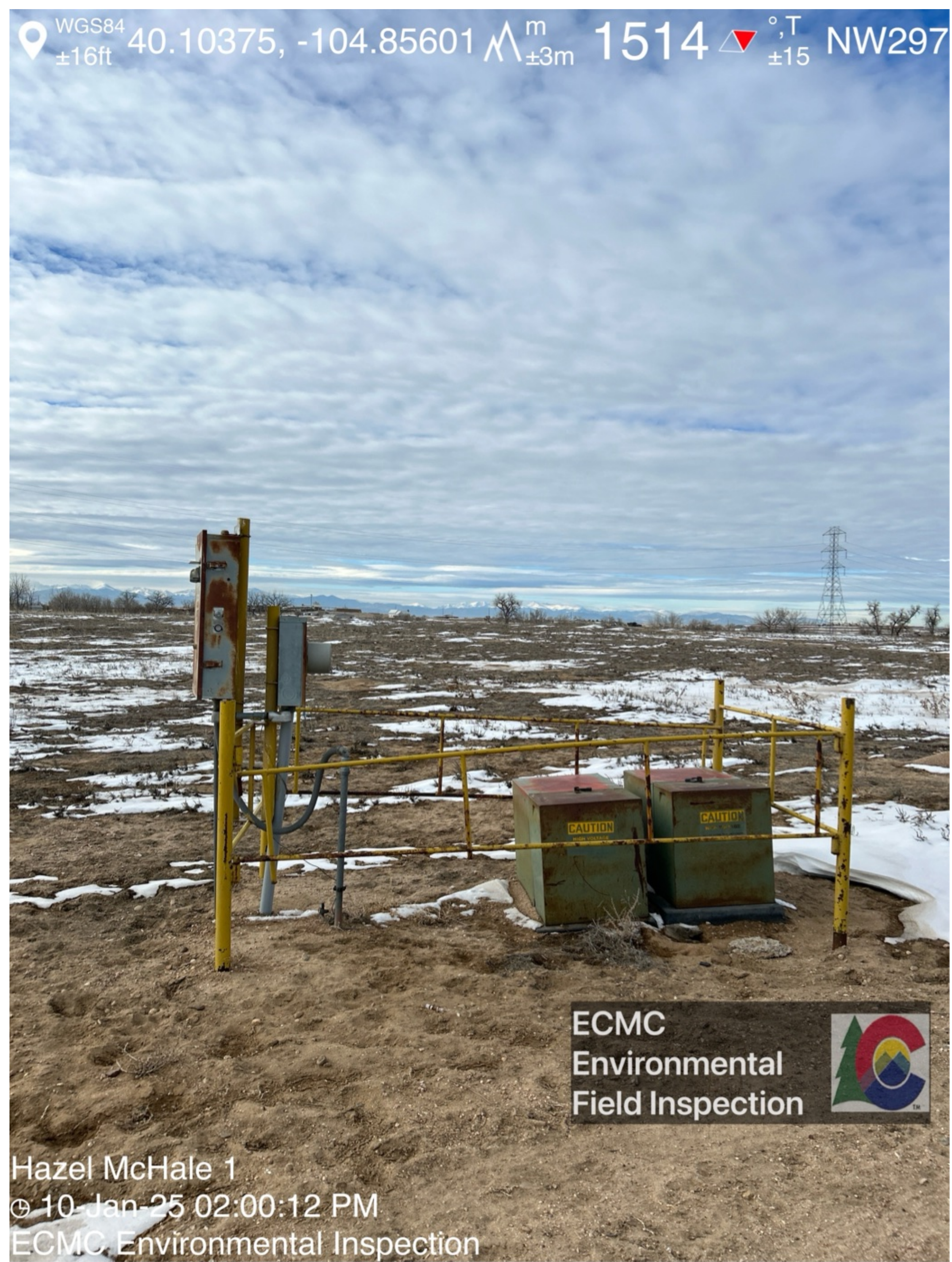




Debris observed within wellhead fencing.









n sed e ipment observed it in ell ead encin .



ebri observed it in ell ead encin .

