

KT Resources LLC
Ant Hill Unit 19-44
Location ID: 316310



Tank battery signs

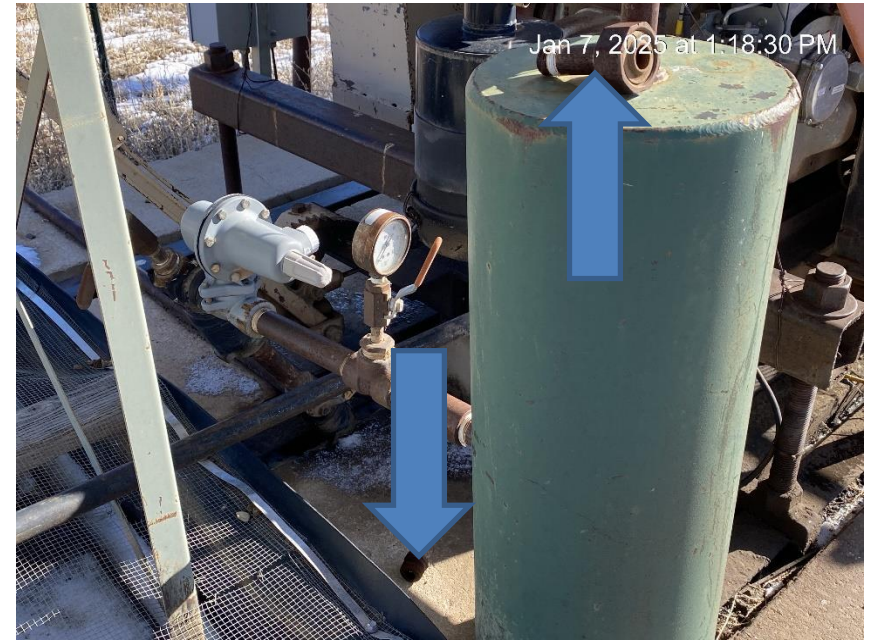


Debris

KT Resources LLC
Ant Hill Unit 19-44
Location ID: 316310



Debris



Debris

**KT Resources LLC
Ant Hill Unit 19-44
Location ID: 316310**



Debris



When sign is replaced additional information is required

**KT Resources LLC
Ant Hill Unit 19-44
Location ID: 316310**



Equipment leak and staining



Equipment leak and staining

KT Resources LLC
Ant Hill Unit 19-44
Location ID: 316310



Debris



Debris

**KT Resources LLC
Ant Hill Unit 19-44
Location ID: 316310**



Weeds



Erosion and soil migration

**KT Resources LLC
Ant Hill Unit 19-44
Location ID: 316310**



Erosion and soil migration



Erosion and soil migration

KT Resources LLC
Ant Hill Unit 19-44
Location ID: 316310



Relief vents missing caps

Jan 7, 2025 at 1:24:01 PM

EJL 6073 RAC 503 Rio Blanco

EMPACT ANALYTICAL SYSTEMS INC.
365 SOUTH MAIN
BRIGHTON, CO 80601
303-637-0150 www.empactanalytical.com

Meter S/N
15113466
C-59687

Station Name WRD Ant Hill Unit 19-44
Station No. 120275557 Producer 310P
Sec 19 Township 2N Range 9647
Diff 250" Temp Range 0-150° Tube Size 2.667
Static 200' Absolute 11.81 psig

Date	Orifice Plate Size	Meter Test Date	Sample Date
6M 3-6-18	0.750 ✓	3-6-18	3-6-18
KB 4-16-19	.750	4-16-19	4-16-19
1-27-22	.750	1-27-22	

KB

Calibration overdue

**KT Resources LLC
Ant Hill Unit 19-44
Location ID: 316310**



Location from West corner



Location from South corner

**KT Resources LLC
Ant Hill Unit 19-44
Location ID: 316310**



Location from East corner



Location from North corner and entrance