

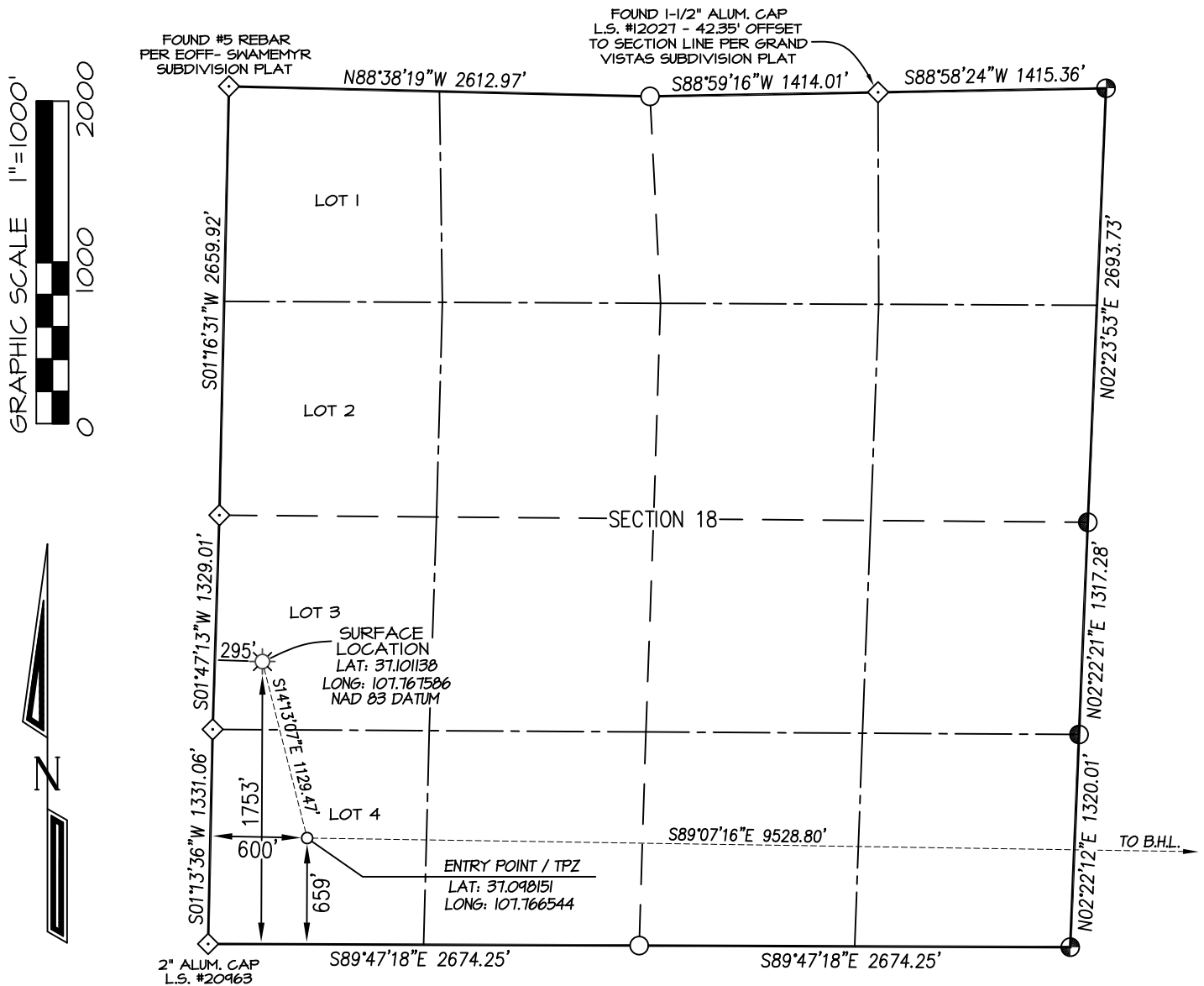
NUEVIDA RESOURCES, LLC: ARDOUREL 33081718 #2HU

SURFACE LOCATION: 1753' FSL & 295' FWL

SECTION 18, T-33-N, R-8-W, N.M.P.M., LA PLATA COUNTY, COLORADO. GROUND LEVEL ELEVATION: 6718.7'

BOTTOM HOLE LOCATION: 600' FSL, 480' FEL

SECTION 17, T-33-N, R-8-W, N.M.P.M., LA PLATA COUNTY, COLORADO.



NOTE:

SEE SHEET 3 OF 3 FOR COORDINATE TABLE,
SURVEY NOTES, AND SURVEYOR'S CERTIFICATE.

SHEET 1 OF 3

PREPARED FOR:

NUEVIDA RESOURCES, LLC

NORTHSTAR
SURVEYING & MAPPING, INC.

768 County Rd. 308
DURANGO, CO. 81303
(970) 385-0851

DRAWN BY: K.R. SURVEYED: 12/22/20
CHECKED BY: K.R. DRAWN: 11/14/24
FILE NO.: NVD01WP JOB NO. NVD01

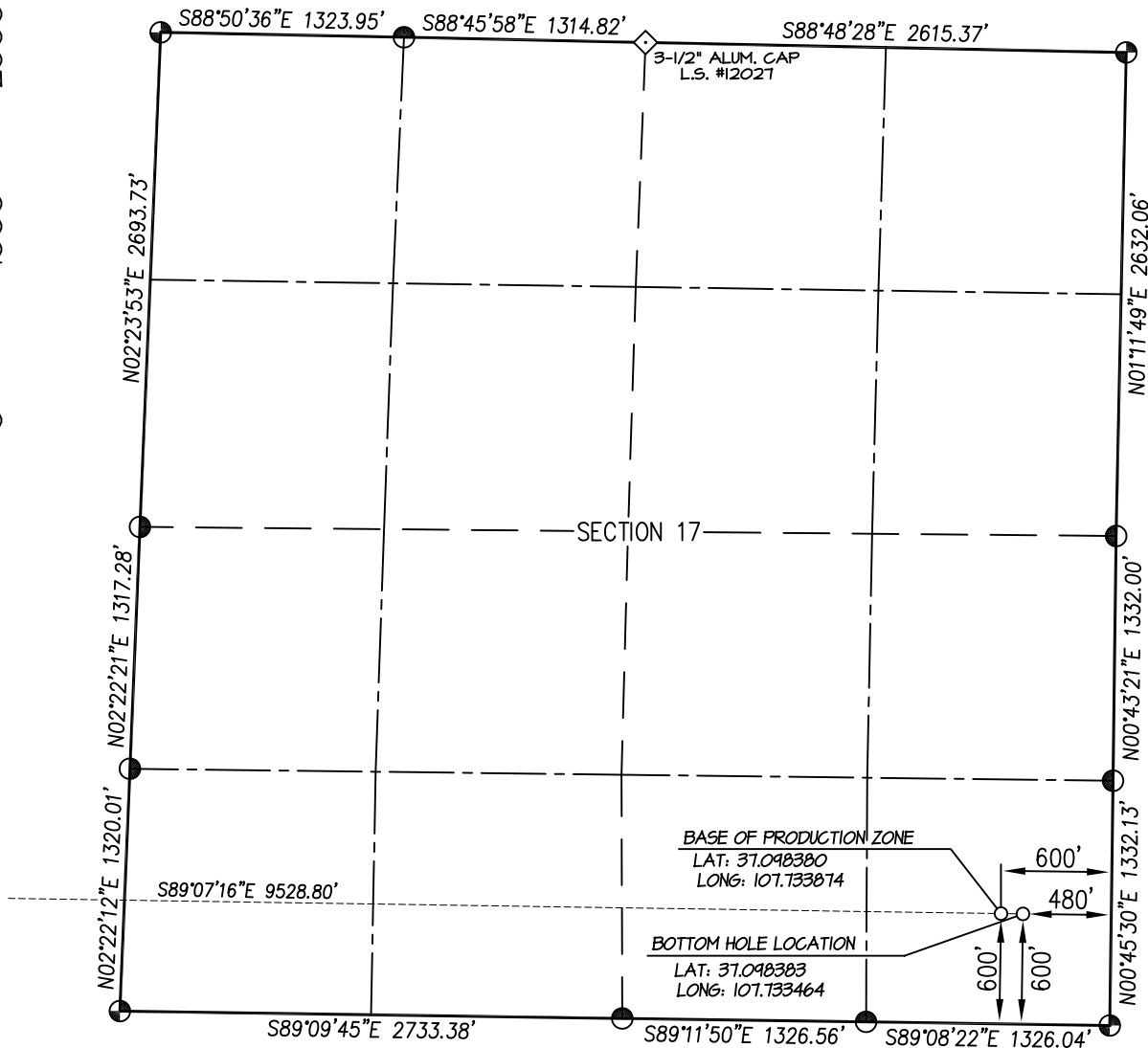
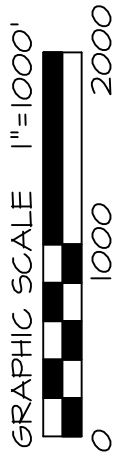
NUEVIDA RESOURCES, LLC: ARDOUREL 33081718 #2HU

SURFACE LOCATION: 1753' FSL & 295' FWL

SECTION 18, T-33-N, R-8-W, N.M.P.M., LA PLATA COUNTY, COLORADO. GROUND LEVEL ELEVATION: 6718.7'

BOTTOM HOLE LOCATION: 600' FSL, 480' FEL

SECTION 17, T-33-N, R-8-W, N.M.P.M., LA PLATA COUNTY, COLORADO.



◇ Found as noted.

● and ○ denote found corner per Monument Record accessories and/or witness monuments.

○ denotes calculated position.

NOTE:

SEE SHEET 3 OF 3 FOR COORDINATE TABLE, SURVEY NOTES, AND SURVEYOR'S CERTIFICATE.

SHEET 2 OF 3

DRAWN BY: K.R.	SURVEYED: 12/22/2020	CHECKED BY: K.R.	DRAWN: 11/14/24	FILE NO. NVD01WP2	JOB NO. NVD01	PREPARED FOR:
						NUEVIDA RESOURCES, LLC
<div>NORTHSTAR</div> <div>SURVEYING & MAPPING, INC.</div> <div>768 County Rd. 308</div> <div>DURANGO, CO. 81303</div> <div>(970) 385-0851</div>						

NUEVIDA RESOURCES, LLC: ARDOUREL 33081718 #2HU

SURFACE LOCATION: 1753' FSL & 295' FWL

SECTION 18, T-33-N, R-8-W, N.M.P.M., LA PLATA COUNTY, COLORADO. GROUND LEVEL ELEVATION: 6718.7'

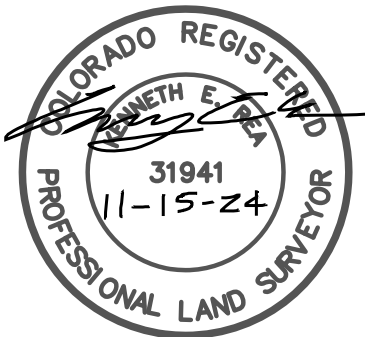
BOTTOM HOLE LOCATION: 600' FSL, 480' FEL

SECTION 17, T-33-N, R-8-W, N.M.P.M., LA PLATA COUNTY, COLORADO.

ARDOUREL 33081718 #2HU	CSZ NAD '83	NAD '83	TIES	SEC/TWP/RNG
SURFACE HOLE LOCATION	N (Y) = 1,166,227.88' E (X) = 2,338,716.85'	LAT: 37.101138°N LONG: 107.767586°W	1753' FSL 295' FWL	SECTION 18 T-33-N, R-8-W
ENTRY POINT / TPZ	N (Y) = 1,165,133.00' E (X) = 2,338,994.27'	LAT: 37.098151°N LONG: 107.766544°W	659' FSL 600' FWL	SECTION 18 T-33-N, R-8-W
BASE OF PRODUCTION ZONE	N (Y) = 1,164,986.83' E (X) = 2,348,521.95'	LAT: 37.098380°N LONG: 107.733874°W	600' FSL 600' FEL	SECTION 17 T-33-N, R-8-W
BOTTOM HOLE LOCATION	N (Y) = 1,164,985.03' E (X) = 2,348,641.75'	LAT: 37.098383°N LONG: 107.733464°W	600' FSL 480' FEL	SECTION 17 T-33-N, R-8-W

NOTES:

1. WELL LOCATION FOOTAGE CALLS MEASURED PERPENDICULAR TO SECTION LINES.
2. WELL GPS OBSERVATION PERFORMED BY KENNY REA ON 12/22/20 - PDOP VALUE = 1.7
3. BEARINGS & DISTANCE SHOWN ARE FIELD MEASURED UNLESS OTHERWISE NOTED.
4. ALL MEASURED DISTANCES SHOWN ARE GRID DISTANCE WITH NO SCALE FACTOR APPLIED.
5. BEARINGS ARE BASED ON THE NORTH AMERICAN DATUM OF 1983, COLORADO SOUTH STATE PLANE COORDINATE SYSTEM, ZONE 0503.
6. ELEVATION IS BASED ON THE NORTH AMERICAN VERTICAL DATUM OF 1988 (GEOID18).



I, KENNETH E. REA, A REGISTERED PROFESSIONAL LAND SURVEYOR IN THE STATE OF COLORADO, DO HEREBY CERTIFY THAT THE WELL LOCATION SHOWN ON THIS PLAT IS ACCURATELY PLOTTED FROM FIELD NOTES OF ACTUAL SURVEYS MADE UNDER MY DIRECT SUPERVISION, AND THAT THIS PLAT IS NOT A LAND SURVEY PLAT OR IMPROVEMENT SURVEY PLAT, AND THAT IT IS NOT TO BE RELIED UPON FOR THE ESTABLISHMENT OF FENCE, BUILDING, OR OTHER FUTURE IMPROVEMENT LINES.

SHEET 3 OF 3

DRAWN BY: K.R.	SURVEYED: 12/22/20	CHECKED BY: K.R.	DRAWN: 11/14/24	FILE NO. NVDOTWP3 JOB NO. NVD01
PREPARED FOR: NUEVIDA RESOURCES, LLC				
NORTHSTAR SURVEYING & MAPPING, INC. 768 County Rd. 308 DURANGO, CO. 81303 (970) 385-0851				