

ENERGY SERVICES

RADIAL BOND TOOL  
GAMMA RAY  
CCL

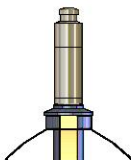
Company	CIVITAS	Country	USA				
Well	NORTHWEST A S20-25-8C						
Field	WATTENBURG						
County	BROOMFIELD						
State	CO						
Location:		API # : 05-014-20791	Other Services				
SEC 9 TWP 1S RGE 68W		Elevation 5314"	Elevation				
Permanent Datum	GL		K.B. ---				
Log Measured From	29'		D.F. ---				
Drilling Measured From	GL		G.L. 5314'				
Date	2-OCT-2024						
Run Number	ONE						
Depth Driller	22200'						
Depth Logger	2485'						
Bottom Logged Interval	2480'						
Top Log Interval	SURFACE						
Open Hole Size	8.5'						
Type Fluid	WATER						
Density / Viscosity	N/A						
Max. Recorded Temp.	°						
Estimated Cement Top	N/A						
Time Well Ready	ON ARRIVAL						
Time Logger on Bottom	N/A						
Equipment Number	7770						
Location	GREELEY, CO						
Recorded By	W. Wacker						
Witnessed By	Hector Tarrazas						
Borehole Record		Tubing Record					
Run Number	Bit	From	To	Size	Weight	From	To
Casing Record	Size		Mgt/Ft		Top		Bottom
Surface String	9.625"		36#		SURFACE		1633'
Prot. String	5.5"		20#		SURFACE		22200'
Production String							
Liner							

<<< Fold Here >>>

All interpretations are opinions based on inferences from electrical or other measurements and we cannot and do not guarantee the accuracy or correctness of any interpretation, and we shall not, except in the case of gross or willful negligence on our part, be liable or responsible for any loss, costs, damages, or expenses incurred or sustained by anyone resulting from any interpretation made by any of our officers, agents or employees. These interpretations are also subject to our general terms and conditions set out in our current Price Schedule.

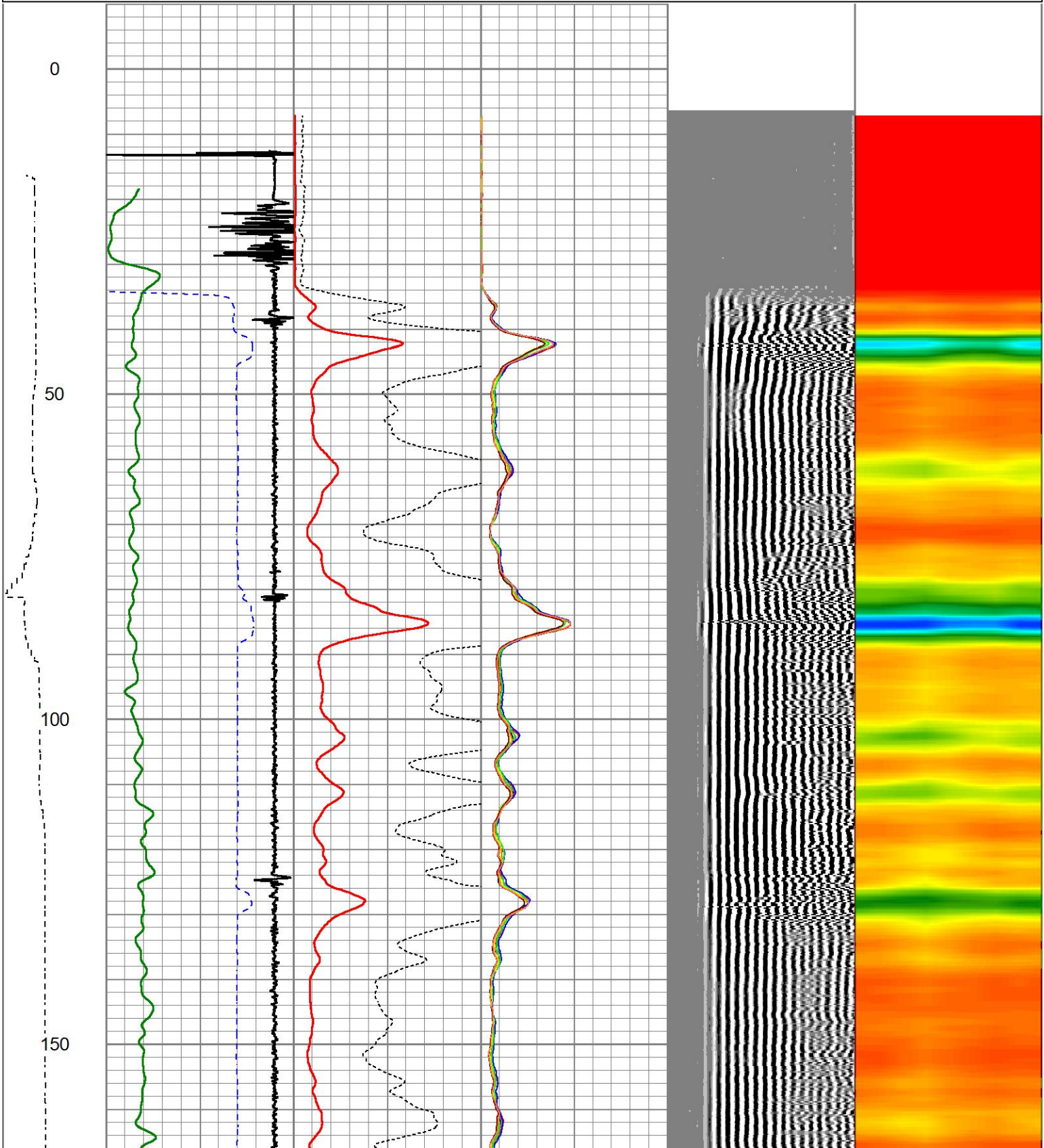
Comments

RAN CBL TO VERIFY CEMENT BOND  
WELL LOADED ON ARRIVAL  
RECORDED WITH 500 PSI SURFACE INDUCED PRESSURE  
CORRELATED TO KB AT 29 FT

Sensor	Offset (ft)	Schematic	Description	Length (ft)	O.D. (in)	Weight (lb)
			CHD-1_7/16_Cabehead 1 7/16 Cablehead	1.00	1.44	5.00

				CENT-Tecko (001) Tecko 2 3/4" 30" long	2.50	2.75	25.00
HEADVOLT	15.88						
Temp	13.02						
WVFS8	10.79			RBT-27SBT10 (Greeley-Ext-Temp-5.5") Probe 2.75" Radial with Integral Temperature Sub	9.39	2.75	
WVFS7	10.79						
WVFS6	10.79						
WVFS5	10.79						
WVFS4	10.79						
WVFS3	10.79						
WVFS2	10.79						
WVFS1	10.79						
WVF3FT	10.79						
WVF5FT	9.79						
WVFCAL	6.54						
HEADVOLT	6.54						
				CENT-2.75variable 2.75" variable length	2.00	2.75	25.00
CCL	3.63						
				GR-27GRL10 (27GRL10-XXXX) 2-3/4" Probe Gamma Ray	4.54	2.75	50.00
GR	0.89						
Dataset: 5-5inch-civ-nw-8c-cbl.db: field/well/run1/pass8 Total length: 19.43 ft Total weight: 105.00 lb O.D.: 2.75 in							

Charted by		Depth in Feet scaled 1.240																			
LSPD	650	TT (usec)	150	0	AMP (mV)	100	0	AMPS1	150	200	VDL (usec)	1200	1	Cement Map	8						
(ft/min)	-9	CCL	1	0	AMPx5 (mV)	20	0	AMPS2	150												
0	-250	GR (GAPI)	150																		
		150	GR (GAPI)	400																	
							0	AMPS3	150												
							0	AMPS4	150												
							0	AMPS5	150												
							0	AMPS6	150												
							0	AMPS7	150												
							0	AMPS8	150												



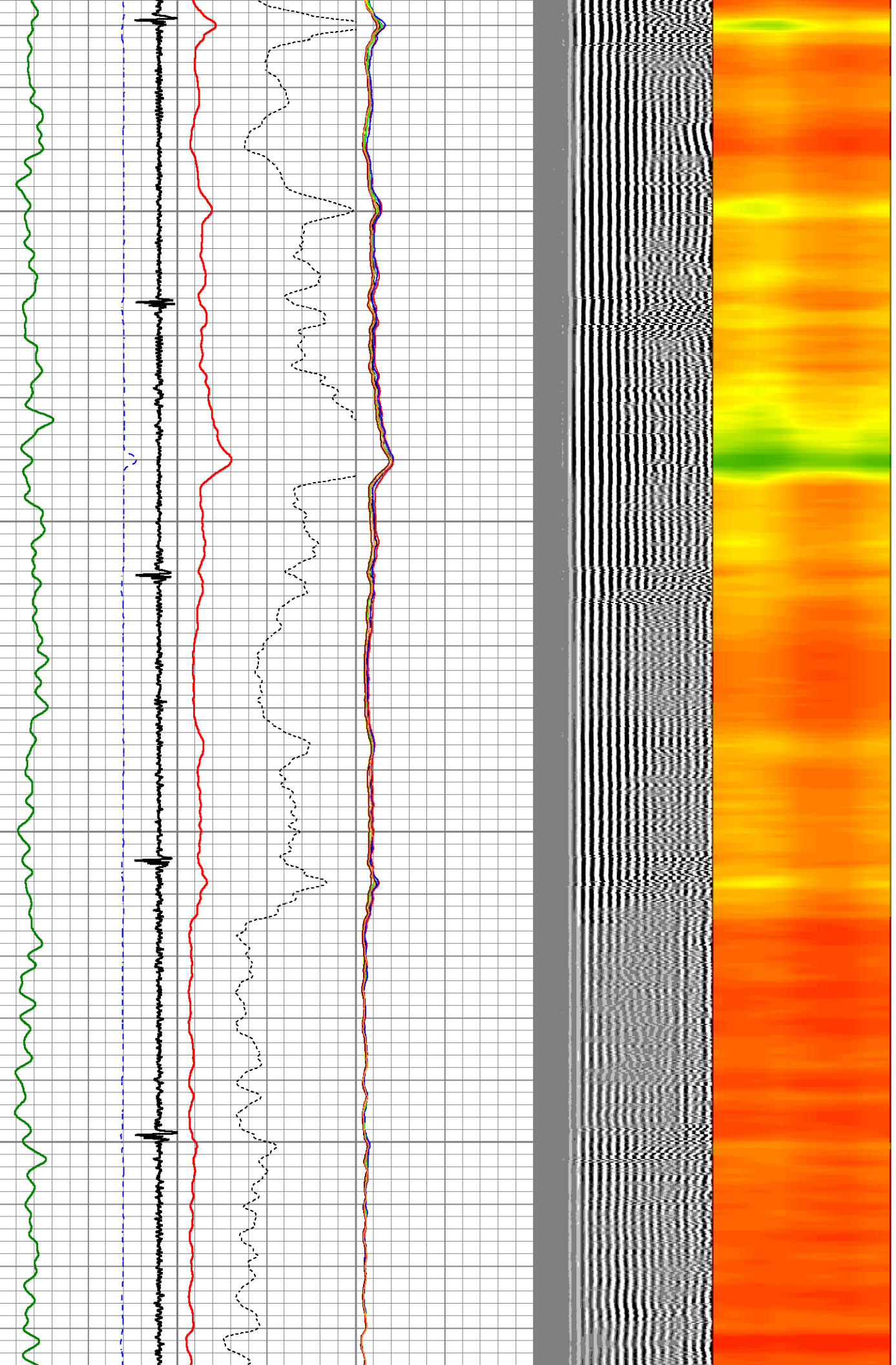


200

250

300

350



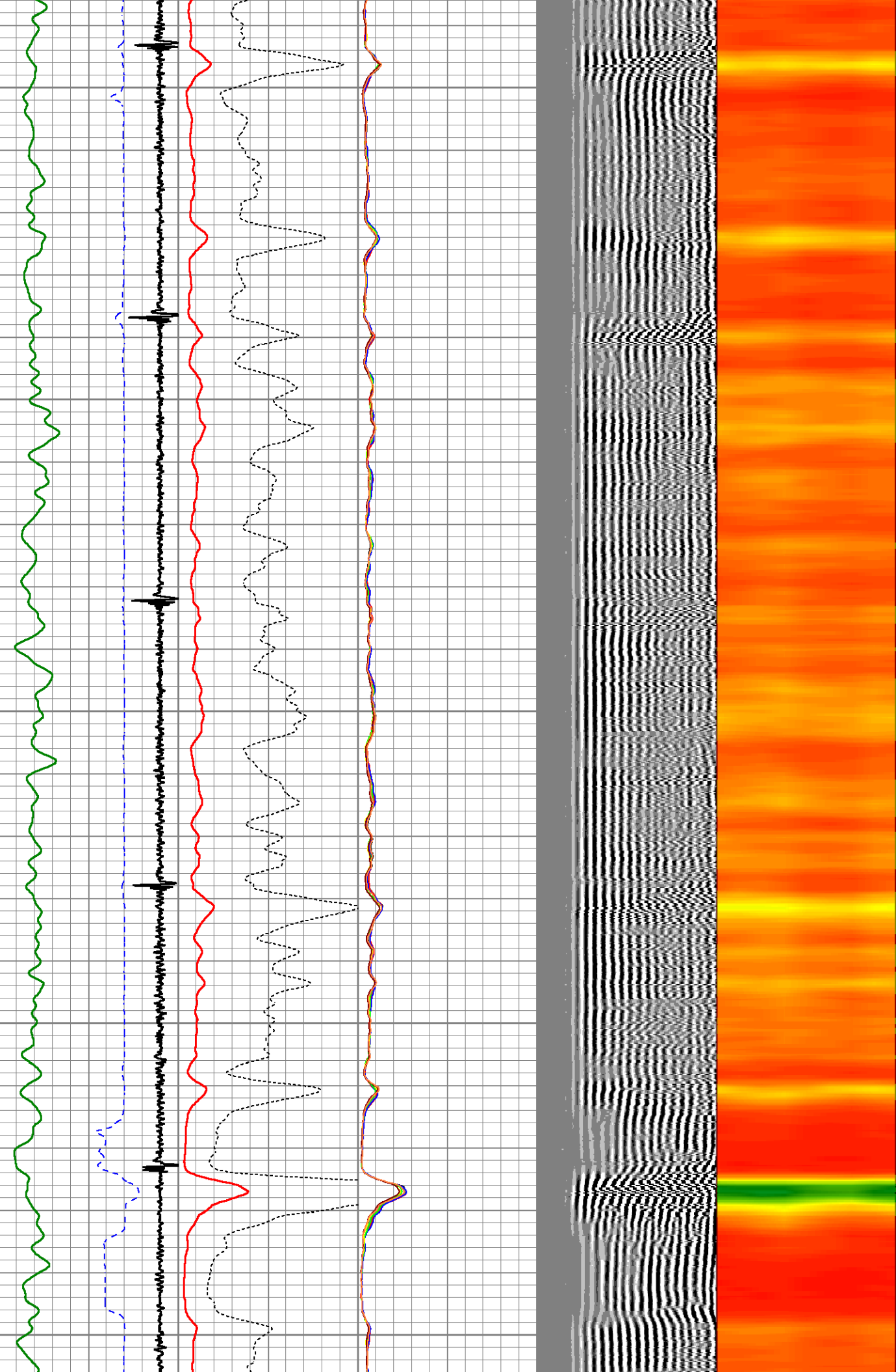
400

450

500

550

600

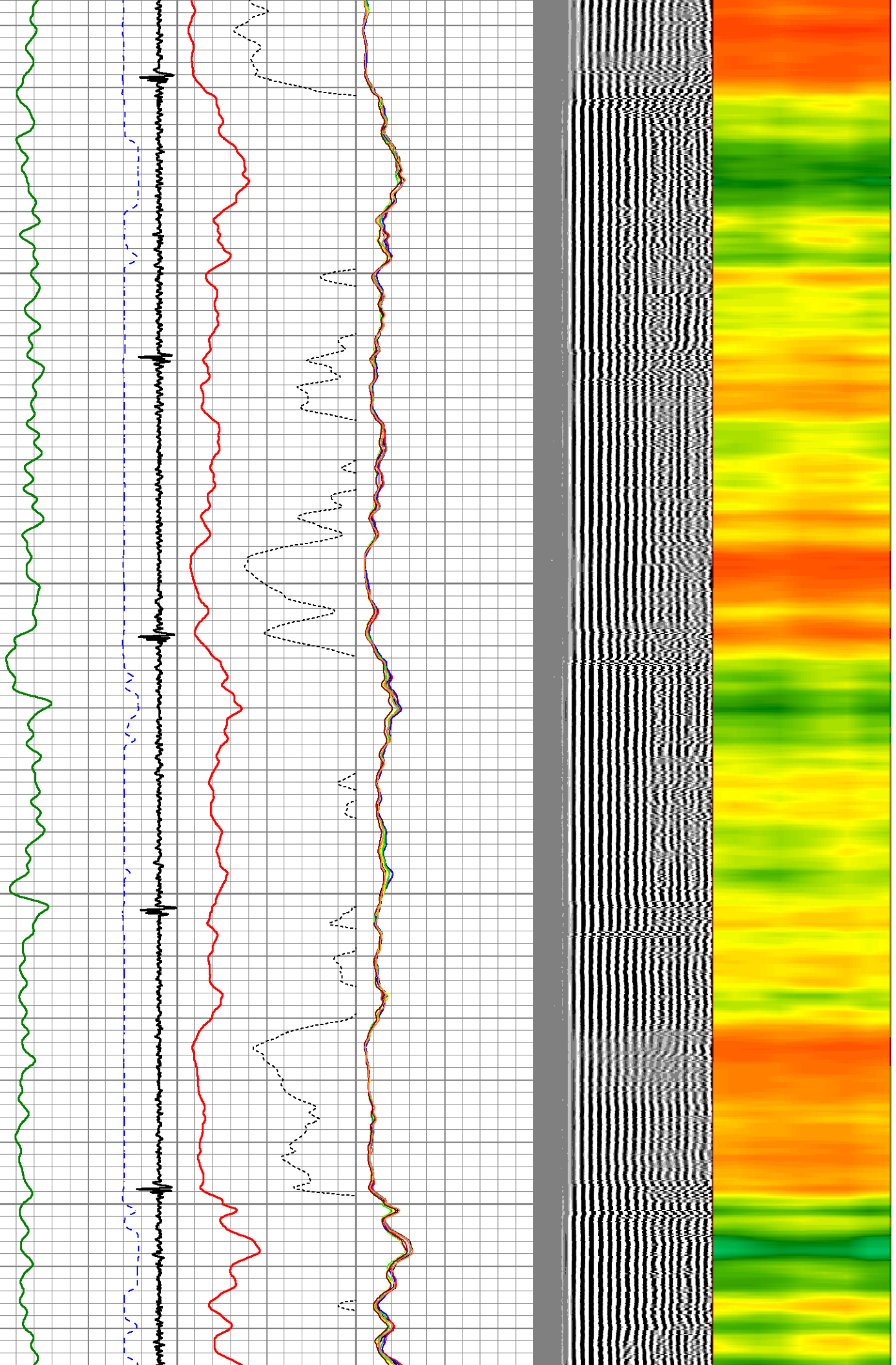


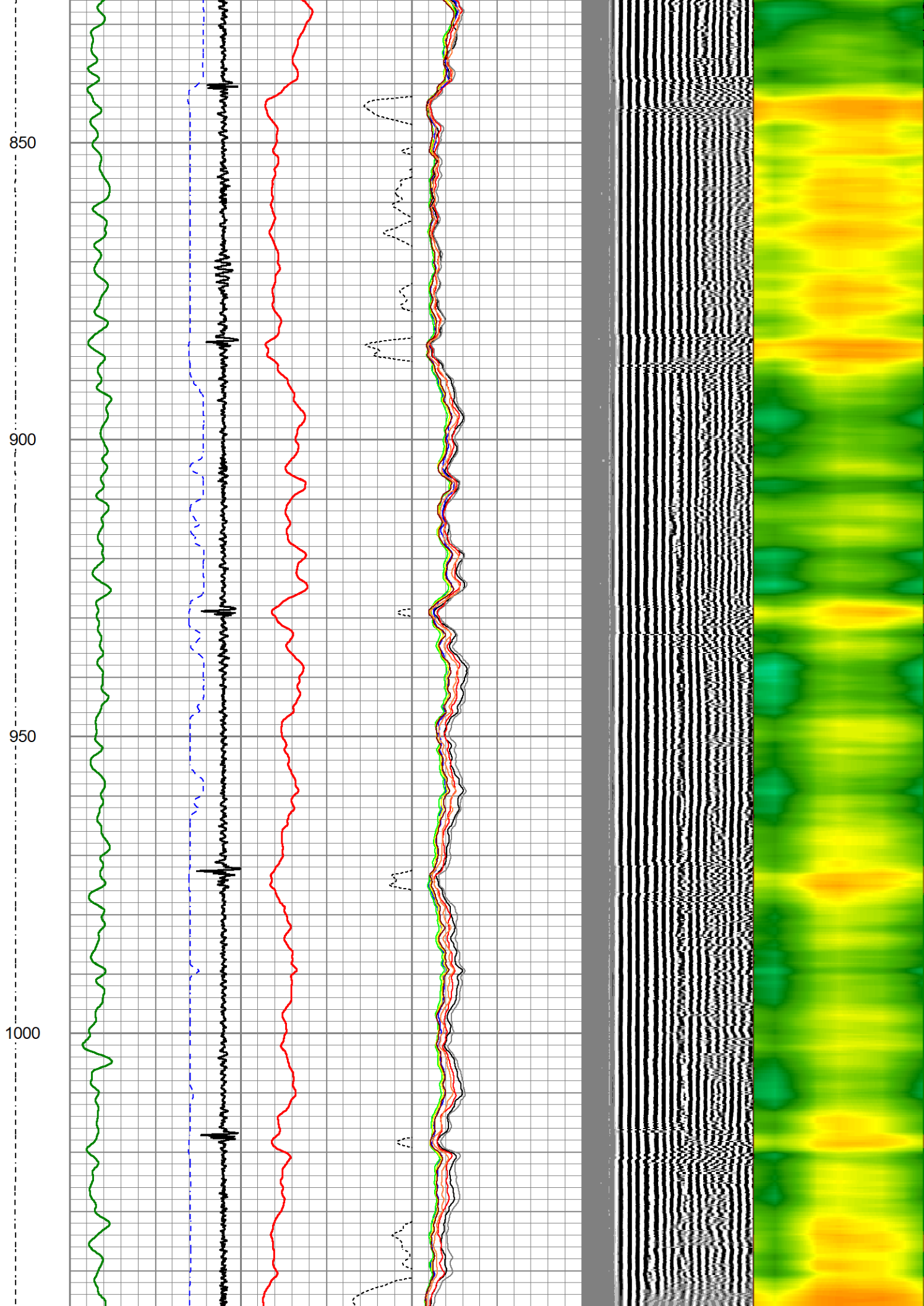
650

700

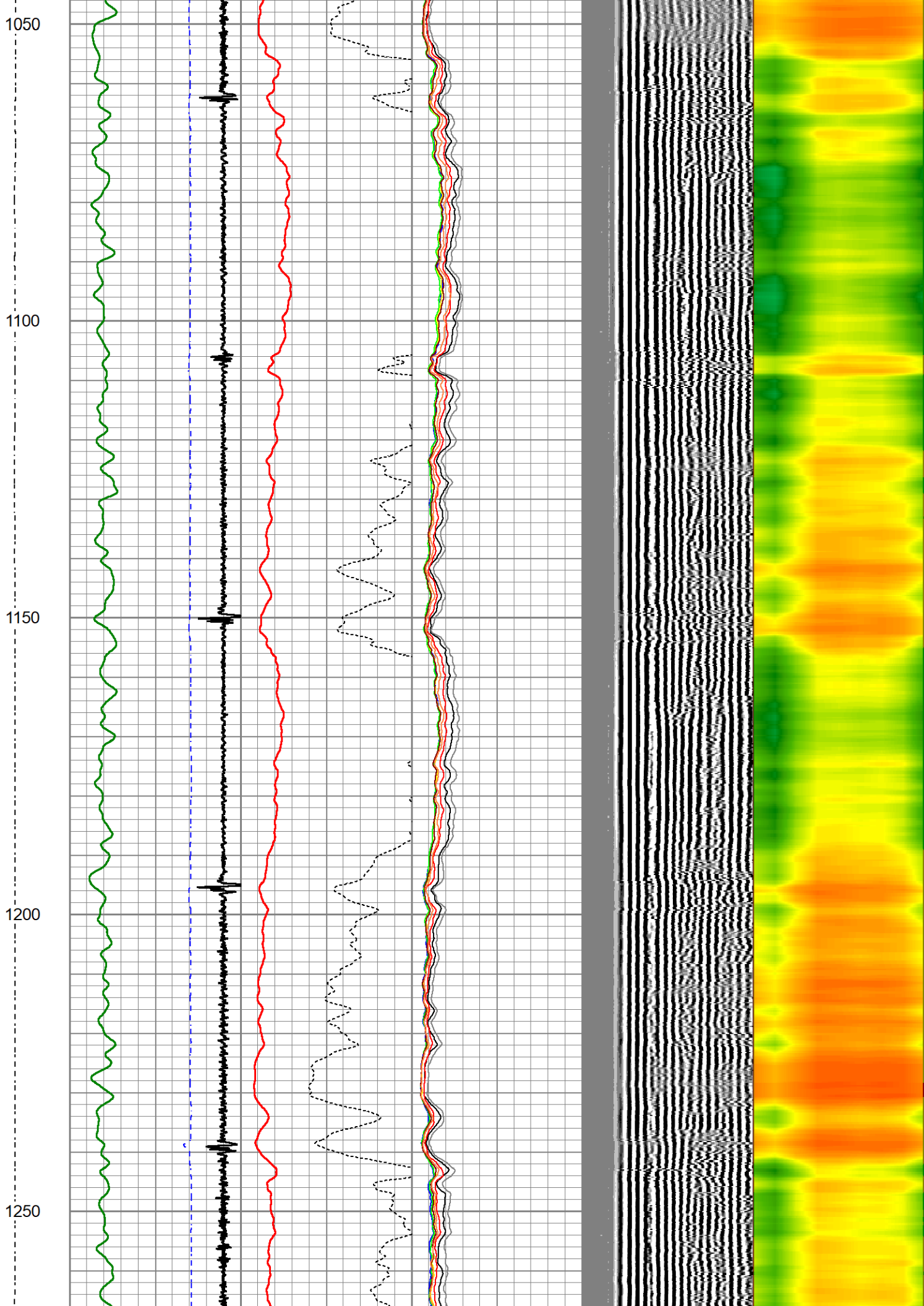
750

800









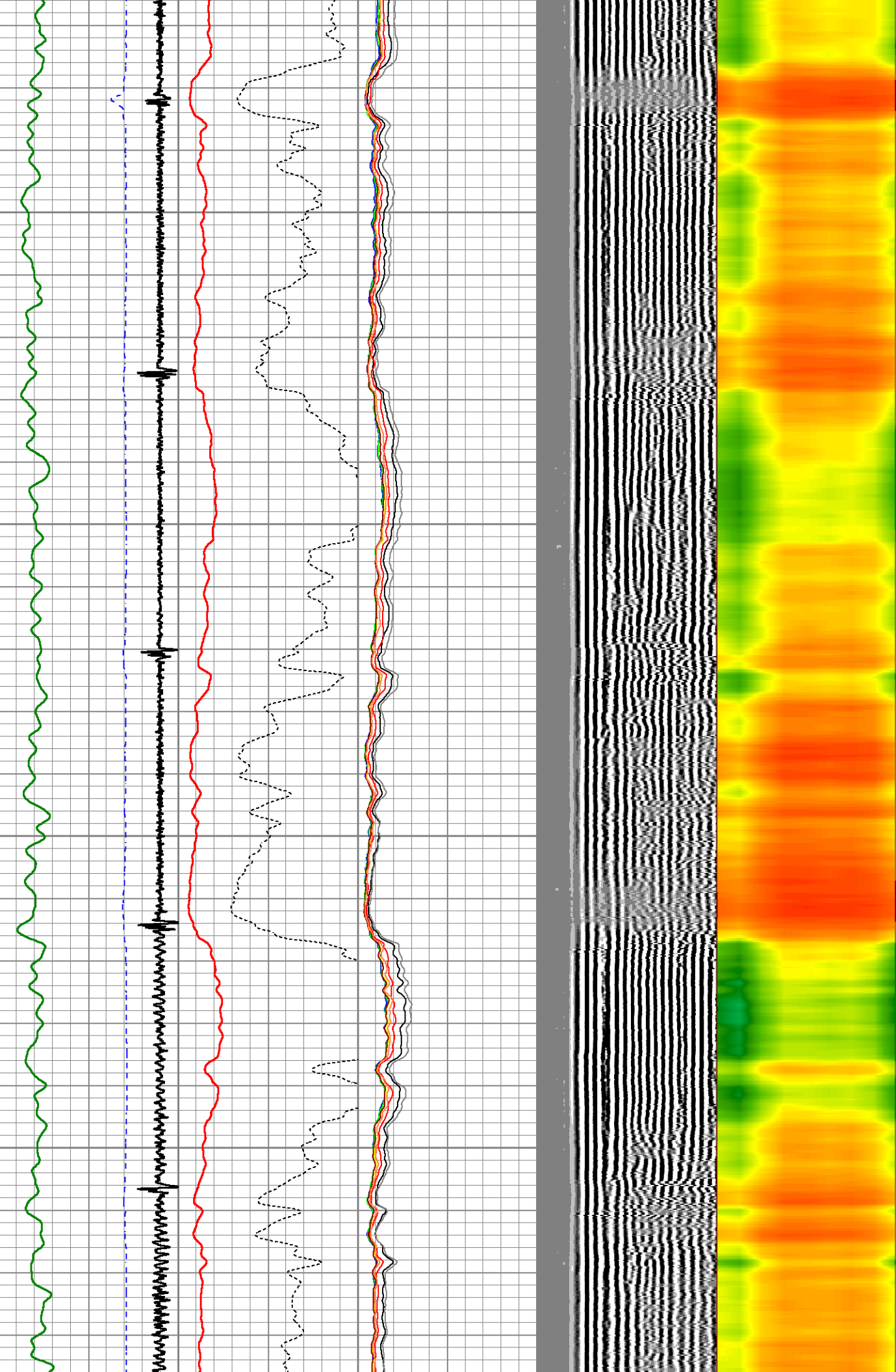


1300

1350

1400

1450



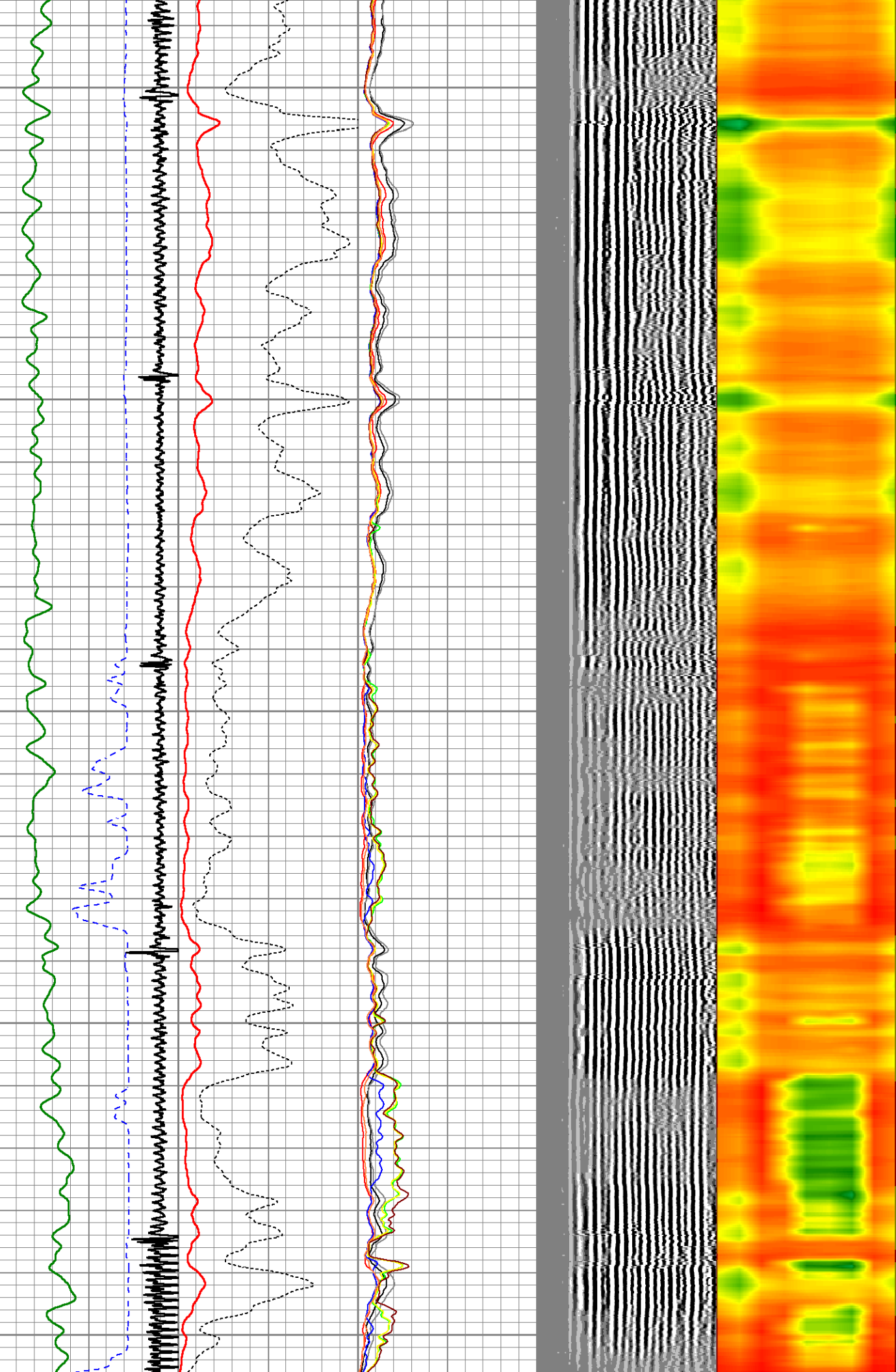
1500

1550

1600

1650

1700



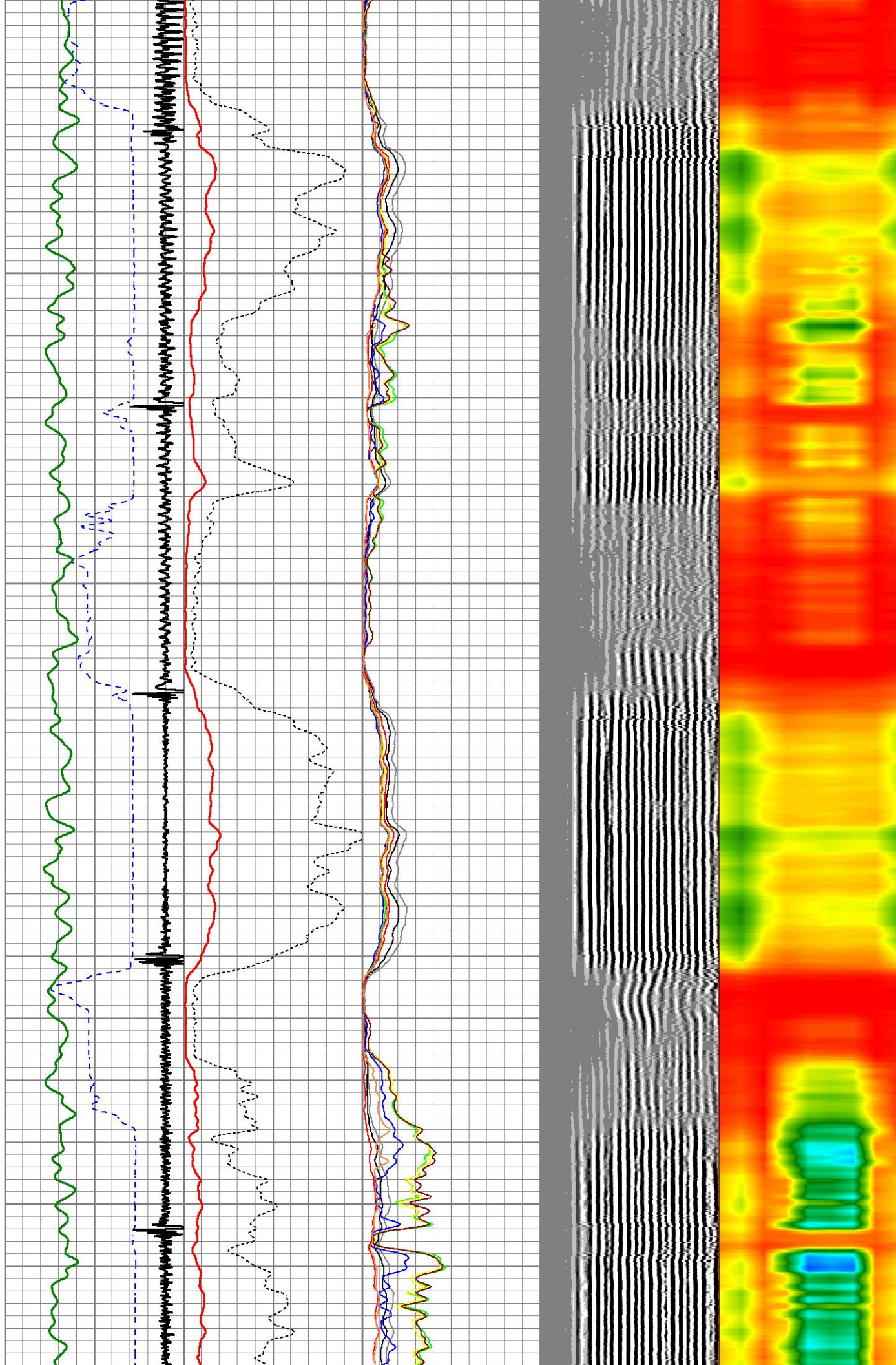


1750

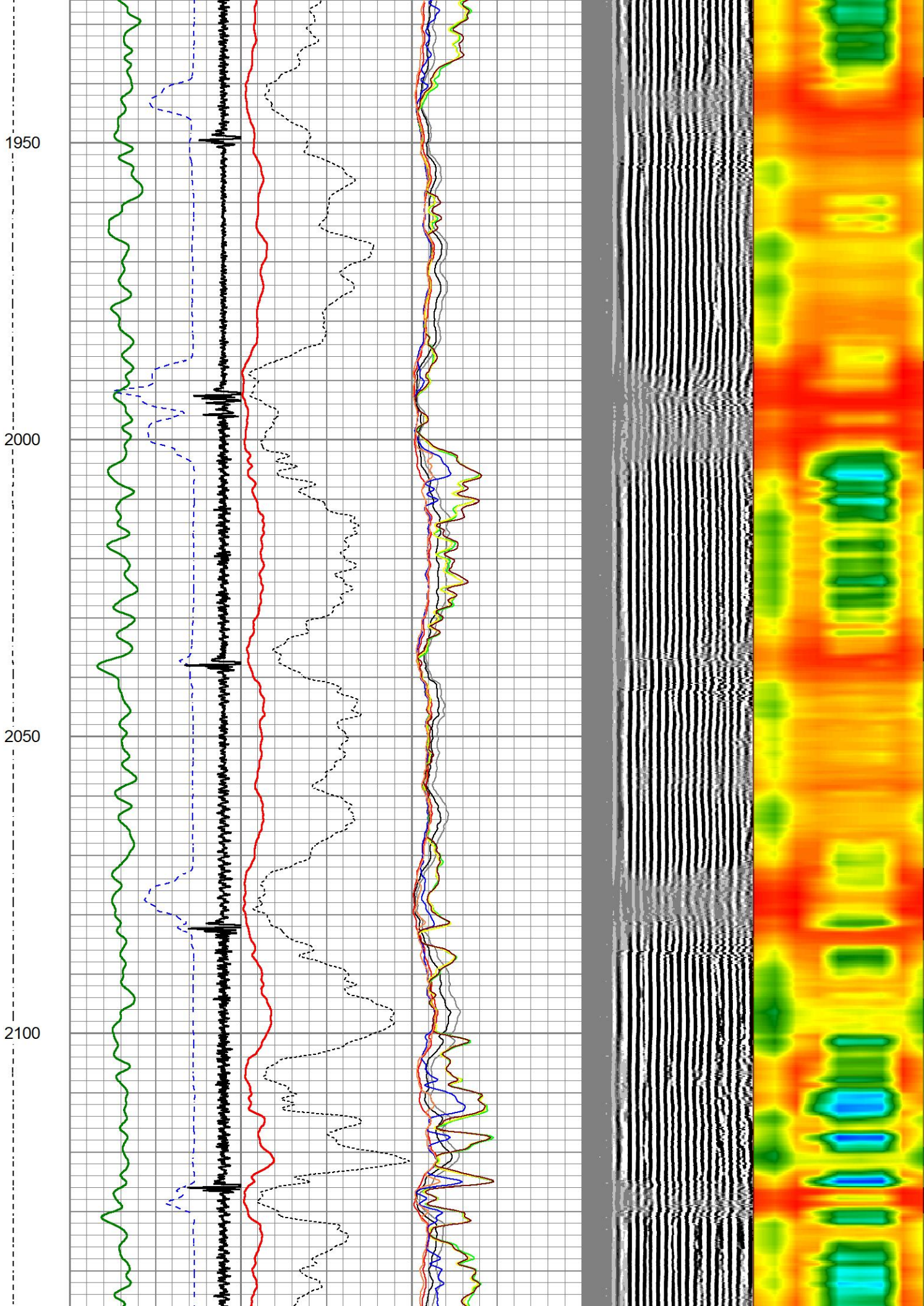
1800

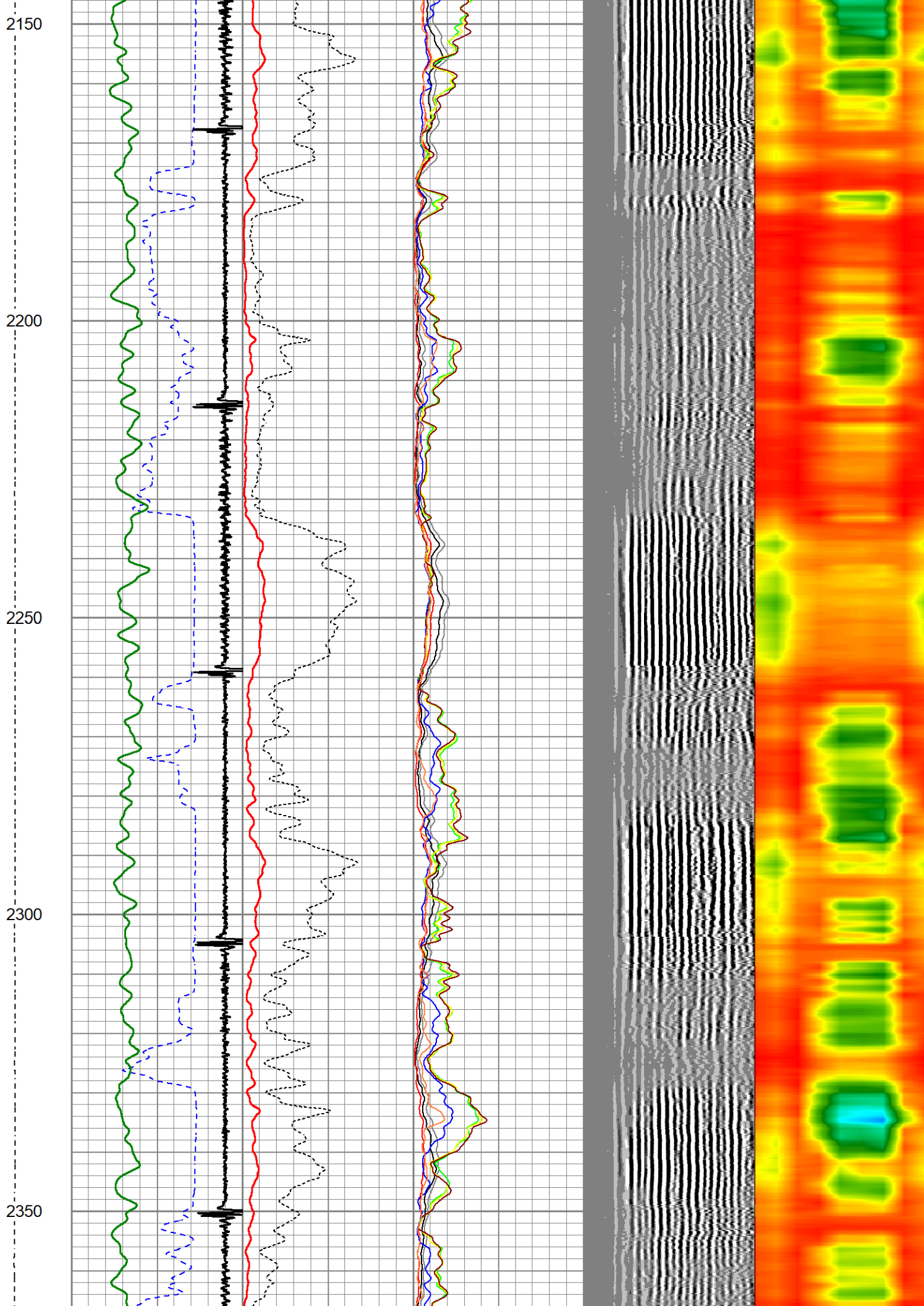
1850

1900

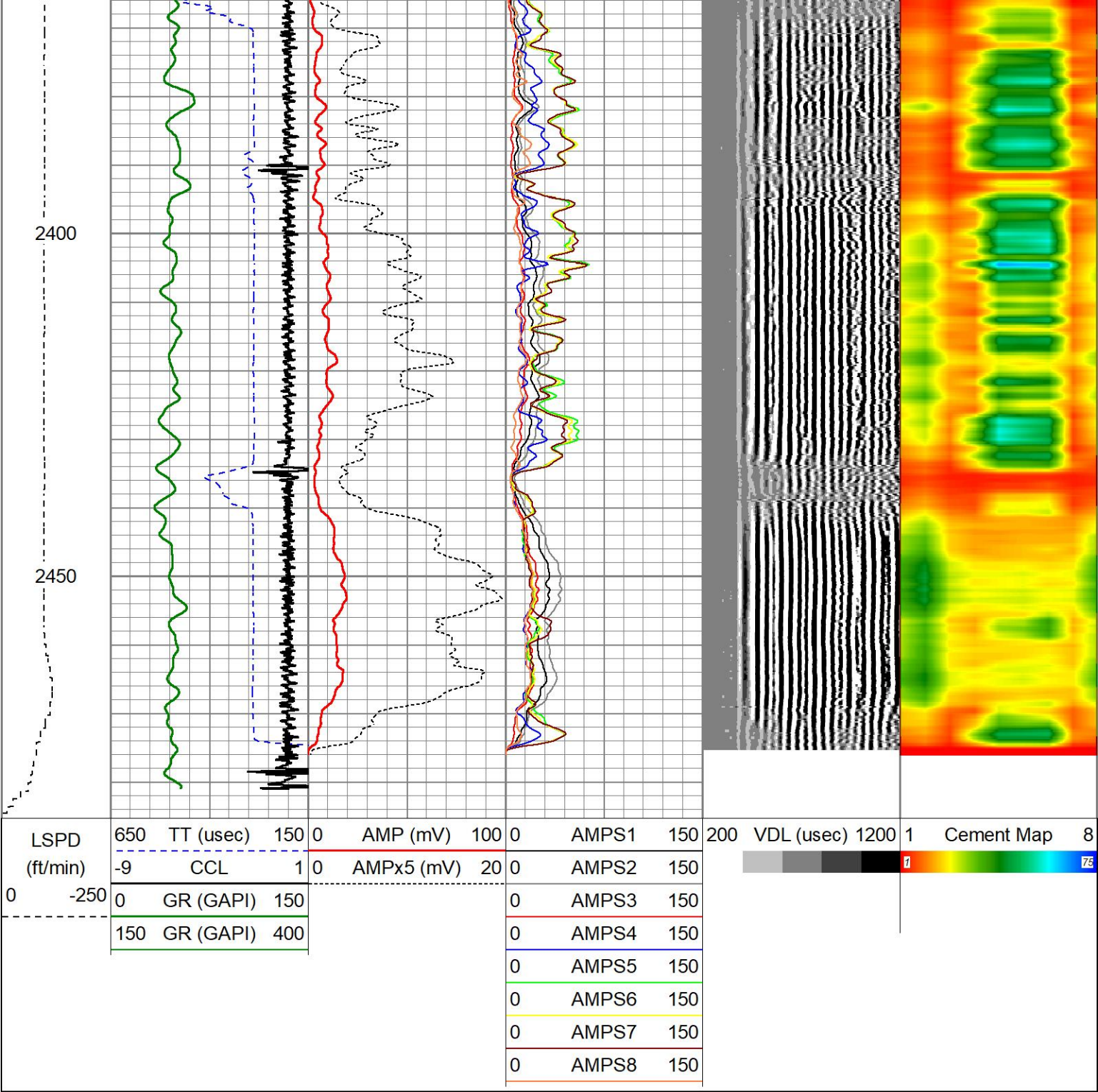












Calibration Report		
Database File	5-5inch-civ-nw-8c-cbl.db	
Dataset Pathname	main	
Dataset Creation	Wed Oct 02 10:27:39 2024	
Gamma Ray Calibration Report		
Serial Number:	27GRL10-XXXX	
Tool Model:	27GRL10	
Performed:	Mon Mar 11 13:46:24 2024	
Calibrator Value:	1.0	GAPI
Background Reading:	0.0	cps
Calibrator Reading:	1.0	cps
Sensitivity:	0.5000	GAPI/cps



## Segmented Cement Bond Log Calibration Report

Serial Number: Greeley-Ext-Temp-5.5"  
Tool Model: 27SBT10

Calibration Casing Diameter: 5.500 in  
Calibration Depth: 820.033 ft

Master Calibration, performed (Derived):

	Raw (v)		Calibrated (mv)		Results	
	Zero	Cal	Zero	Cal	Gain	Offset
3'	0.000	1.563	0.250	71.921	45.847	0.249
CAL	1.253	2.072				
5'	0.000	1.065	0.250	71.921	67.278	0.249
SUM						
S1	0.000	1.391	0.000	71.921	51.717	-0.001
S2	0.000	1.463	0.000	71.921	49.148	-0.001
S3	0.000	1.582	0.000	71.921	45.458	-0.001
S4	0.000	1.729	0.000	71.921	41.608	-0.002
S5	0.000	1.882	0.000	71.921	38.222	-0.003
S6	0.000	1.895	0.000	71.921	37.960	-0.003
S7	0.000	1.772	0.000	71.921	40.596	-0.004
S8	0.000	1.429	0.000	71.921	50.341	-0.001

Internal Reference Calibration, performed (Not Performed):

	Raw (v)		Calibrated (v)		Results	
	Zero	Cal	Zero	Cal	Gain	Offset
CAL	0.000	0.000	1.253	2.072	1.000	0.000

Air Zero Calibration, performed Wed Oct 2 09:26:36 2024:

	Raw (v)		Calibrated (v)		Results	
	Zero		Zero		Offset	
3'	0.000		0.000		0.000	
5'	0.000		0.000		0.000	
SUM						
S1	0.000		0.000		0.000	
S2	0.000		0.000		0.000	
S3	0.000		0.000		0.000	
S4	0.000		0.000		0.000	
S5	0.000		0.000		0.000	
S6	0.000		0.000		0.000	
S7	0.000		0.000		0.000	
S8	0.000		0.000		0.000	



Company	CIVITAS	
Well	NORTHWEST A S20-25-8C	
Field	WATTENBURG	
County	BROOMFIELD	
State	CO	Country USA