

## Inspection Photos

Location: LARAMIE ENERGY LLC Wagon Track Federal/12-6 Pad

Location ID: 312667

Date: 11/21/2024



Photo # 9478 Entrance to location



Photo # 9492 Location

## Inspection Photos

Location: LARAMIE ENERGY LLC Wagon Track Federal/12-6 Pad

Location ID: 312667

Date: 11/21/2024



Photo # 9479 Location



Photo # 9482 Location



## Inspection Photos

Location: LARAMIE ENERGY LLC Wagon Track Federal/12-6 Pad

Location ID: 312667

Date: 11/21/2024



Photo # 9486 Location



Photo # 9491 Location

## Inspection Photos

Location: LARAMIE ENERGY LLC Wagon Track Federal/12-6 Pad

Location ID: 312667

Date: 11/21/2024



Photo # 9517 NW corner of location



Photo # 9518 NE corner of location



## Inspection Photos

Location: LARAMIE ENERGY LLC Wagon Track Federal/12-6 Pad

Location ID: 312667

Date: 11/21/2024



Photo # 9519 SE corner of location



Photo # 9520 SW corner of location

## Inspection Photos

Location: LARAMIE ENERGY LLC Wagon Track Federal/12-6 Pad

Location ID: 312667

Date: 11/21/2024



Nov 21, 2024 at 11:35:36 AM  
+39.290138, -108.282896 ±4.75m  
De Beque

**Photo # 9501 Tank port open to wildlife/wildlife hazard/  
available for entry by wildlife**



Nov 21, 2024 at 11:53:44 AM  
+39.290179, -108.282919 ±4.73m  
De Beque

**Photo # 9504 Multiple holes and tears in secondary containment  
liner/liner needs maintenance also the liner is deteriorating and  
lacks integrity**

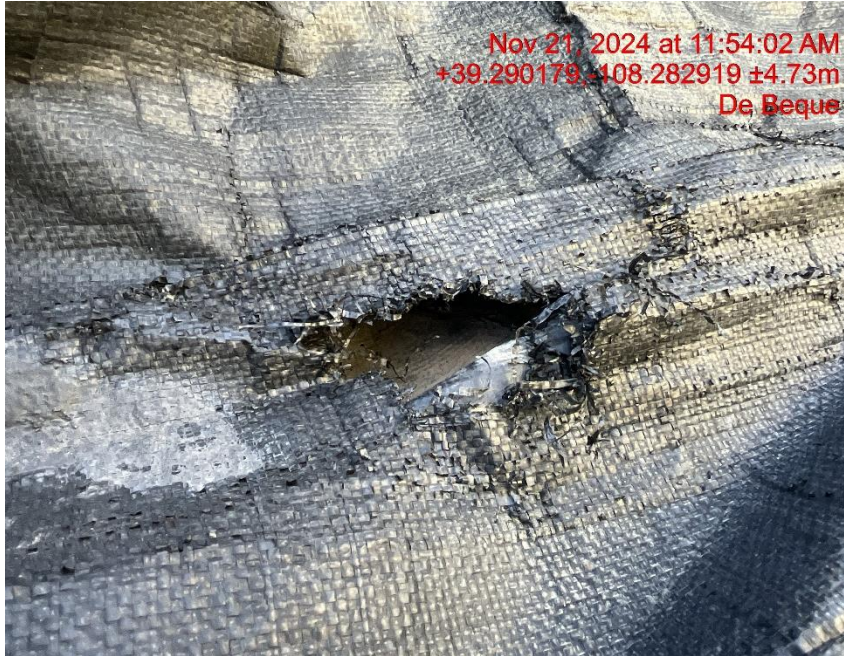


## Inspection Photos

Location: LARAMIE ENERGY LLC Wagon Track Federal/12-6 Pad

Location ID: 312667

Date: 11/21/2024



**Photo # 9505 Multiple holes and tears in secondary containment liner/liner needs maintenance also the liner is deteriorating and lacks integrity**



**Photo # 9507 Multiple holes and tears in secondary containment liner/liner needs maintenance also the liner is deteriorating and lacks integrity**

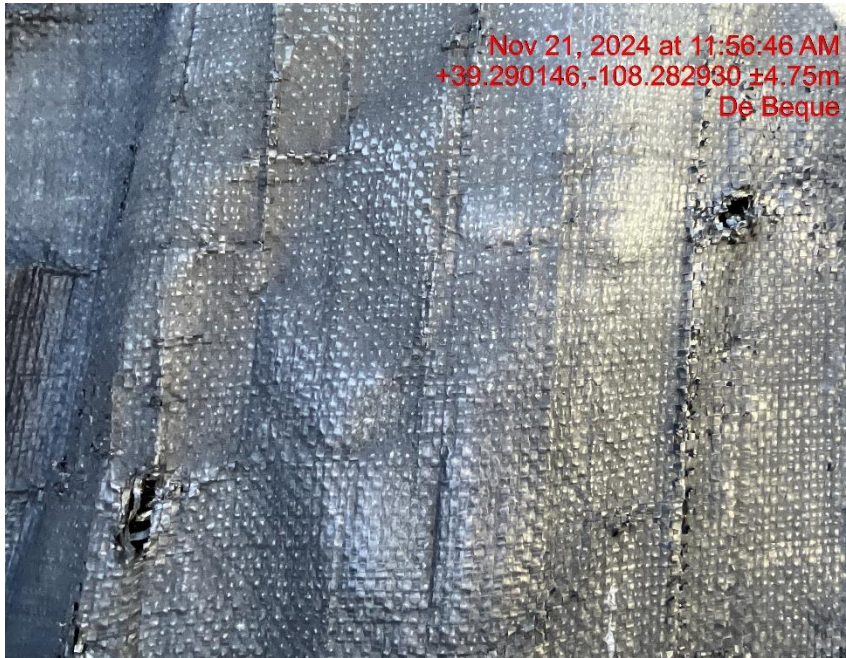


## Inspection Photos

Location: LARAMIE ENERGY LLC Wagon Track Federal/12-6 Pad

Location ID: 312667

Date: 11/21/2024



Nov 21, 2024 at 11:56:46 AM  
+39.290146,-108.282930 ±4.75m  
De Beque



Nov 21, 2024 at 11:57:48 AM  
+39.290175,-108.282934 ±4.73m  
De Beque

**Photo # 9508 Multiple holes and tears in secondary containment liner/liner needs maintenance also the liner is deteriorating and lacks integrity**

**Photo # 9509 Multiple holes and tears in secondary containment liner/liner needs maintenance also the liner is deteriorating and lacks integrity**

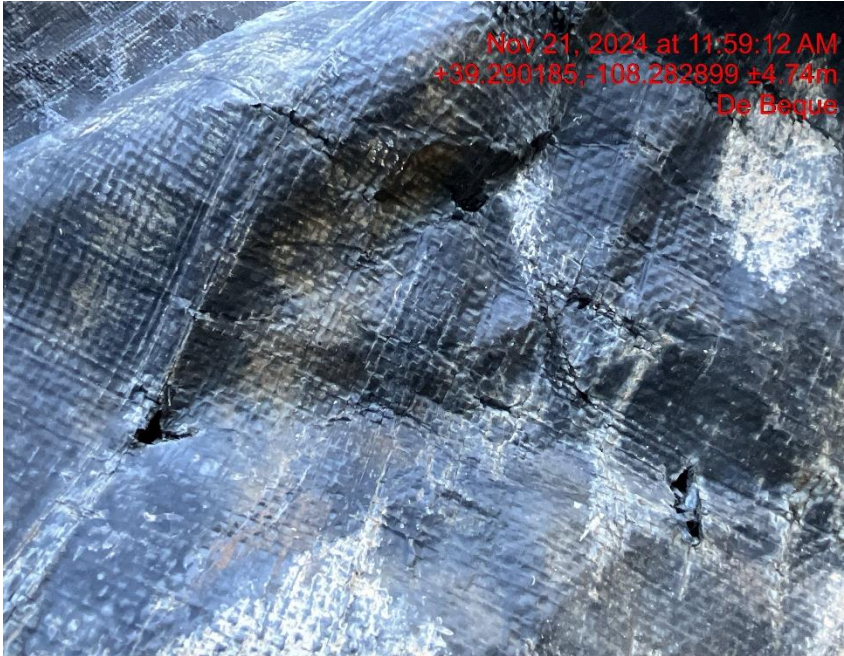


## Inspection Photos

Location: LARAMIE ENERGY LLC Wagon Track Federal/12-6 Pad

Location ID: 312667

Date: 11/21/2024



**Photo # 9510 Multiple holes and tears in secondary containment liner/liner needs maintenance also the liner is deteriorating and lacks integrity**



**Photo # 9511 Multiple holes and tears in secondary containment liner/liner needs maintenance also the liner is deteriorating and lacks integrity**

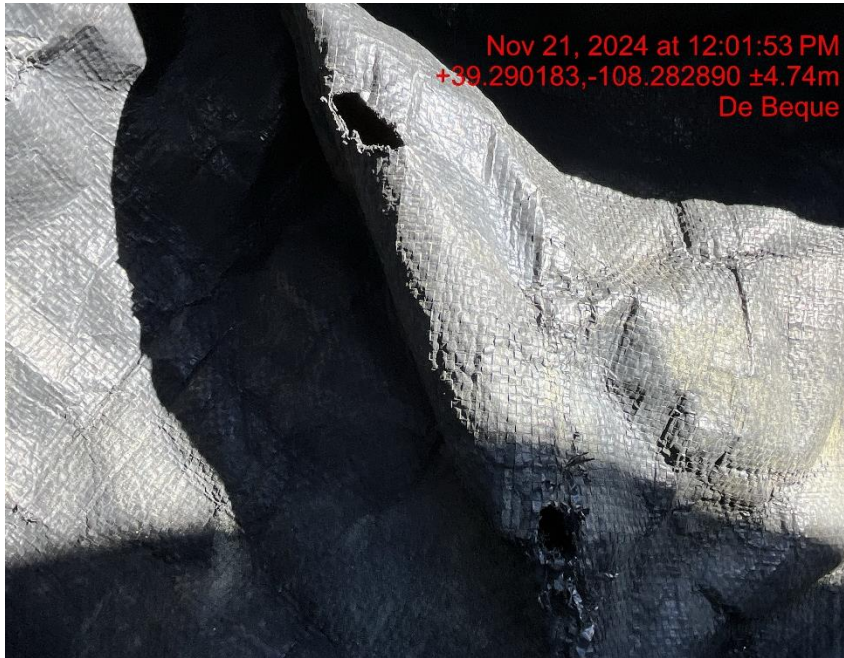


## Inspection Photos

Location: LARAMIE ENERGY LLC Wagon Track Federal/12-6 Pad

Location ID: 312667

Date: 11/21/2024



**Photo # 9513 Multiple holes and tears in secondary containment liner/liner needs maintenance also the liner is deteriorating and lacks integrity**



**Photo # 9516 Multiple holes and tears in secondary containment liner/liner needs maintenance also the liner is deteriorating and lacks integrity**



## Inspection Photos

Location: LARAMIE ENERGY LLC Wagon Track Federal/12-6 Pad

Location ID: 312667

Date: 11/21/2024



Photo # 9523 Debris

