

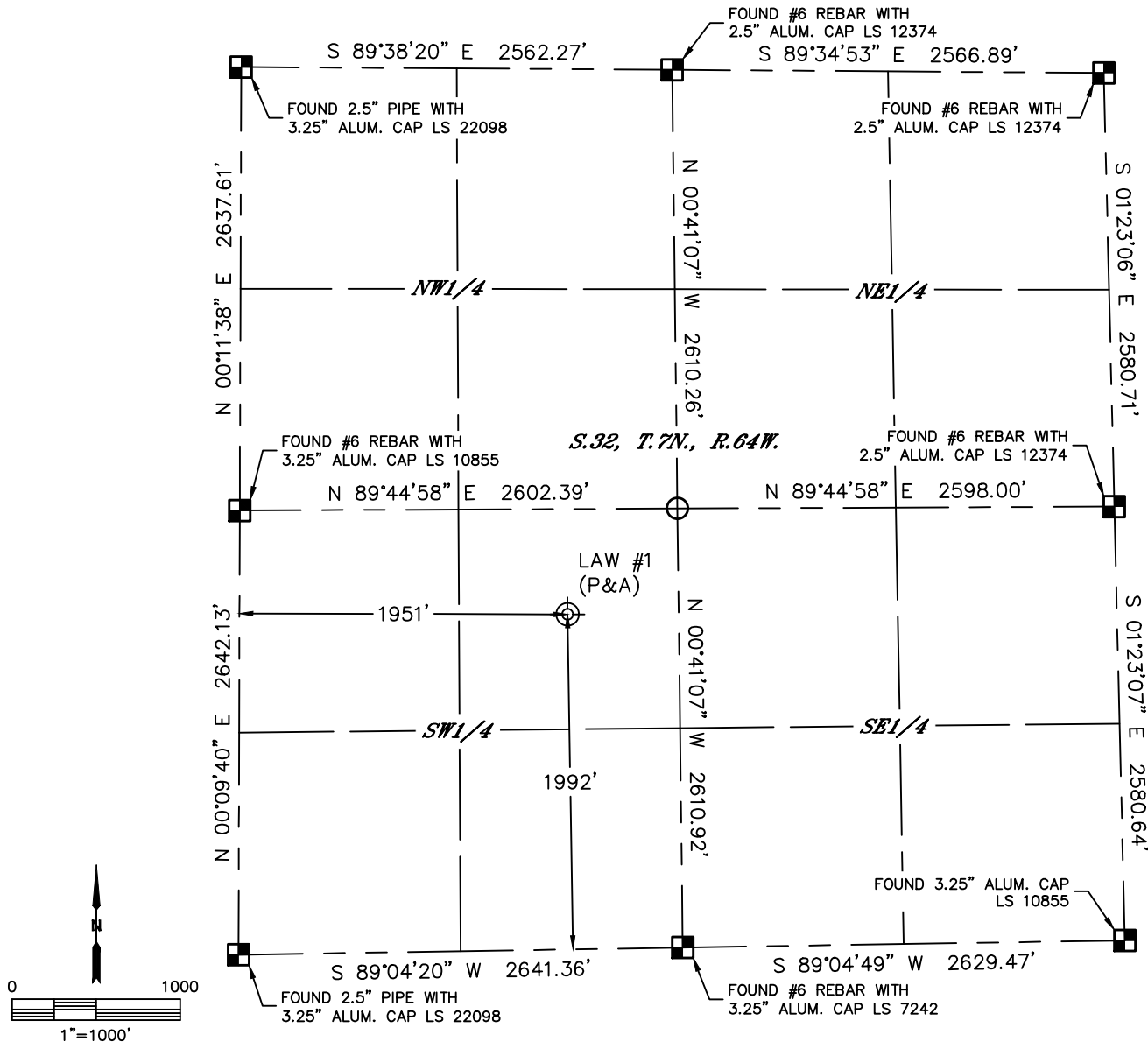


Lat40°, Inc. 6250 W. 10th Street, Unit 2, Greeley, CO 970-515-5294

# PLUGGED AND ABANDONED WELL EXHIBIT

LAW #1

SECTION: 32  
TOWNSHIP: 7N  
RANGE: 64W  
6TH. P.M.  
WELD COUNTY, CO



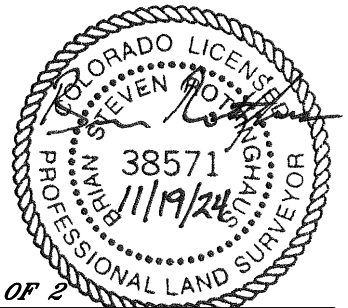
CLIENT: CHEVRON ROCKIES BUSINESS UNIT				LANDMAN: TYLER BEAVERS					
INSTRUMENT OPERATOR: CASEY KOHOUT				SURVEY DATE: 11/11/2024		SURFACE USE: CROP LAND			
SHL FOOTAGE		SHL LAT °	SHL LONG °	SHL PDOP	SHL ELEV (FT.)	SHL 1/4/1/4	SHL S-T-R		
1992	FSL	1951	FWL	40.52779	-104.57652	1.0	4776	NESW	32-7-64
DESCRIPTION: FOUND STRONG METAL DETECTOR RING AT NOTED POSITION. ALSO FOUND OTHER SMALLER RINGS IN THE AREA, POSSIBLE OLD FLOWLINE.									

## NOTE:

- 1) Bearings shown are Grid Bearings of the Colorado State Plane Coordinate System, North Zone, North American Datum 1983. The lineal dimensions as contained herein are based upon the "U.S. Survey Foot."
- 2) Distances to section lines measured at 90 degrees from said section lines.
- 3) Ground elevations are based on an observed GPS elevation (NAVD 1988 DATUM).
- 4) Latitude and Longitude shown are (NAD 83 DATUM).
- 5) Sectional data as shown hereon is from previous surveys and was not verified for this P&A Exhibit.
- 6) This map does not represent a boundary survey.

## LEGEND

- = ALIQUOT MONUMENT AS DESCRIBED
- = CALCULATED POSITION
- ⊙ = ABANDONED WELL



SHEET 1 OF 2

Brian S. Rottinghaus—On Behalf of Lat40°, Inc.  
Colorado Licensed Professional Land Surveyor No. 38571  
DATE: 11/19/2024  
PROJECT#: 2024332



Lat40°, Inc. 6250 W. 10th Street, Unit 2, Greeley, CO 970-515-5294

# PLUGGED AND ABANDONED WELL EXHIBIT

LAW #1

SECTION: 32  
TOWNSHIP: 7N  
RANGE: 64W  
6TH. P.M.  
WELD COUNTY, CO  
DATE: 11/11/2024



VIEW NORTH



VIEW WEST



VIEW EAST



VIEW SOUTH