



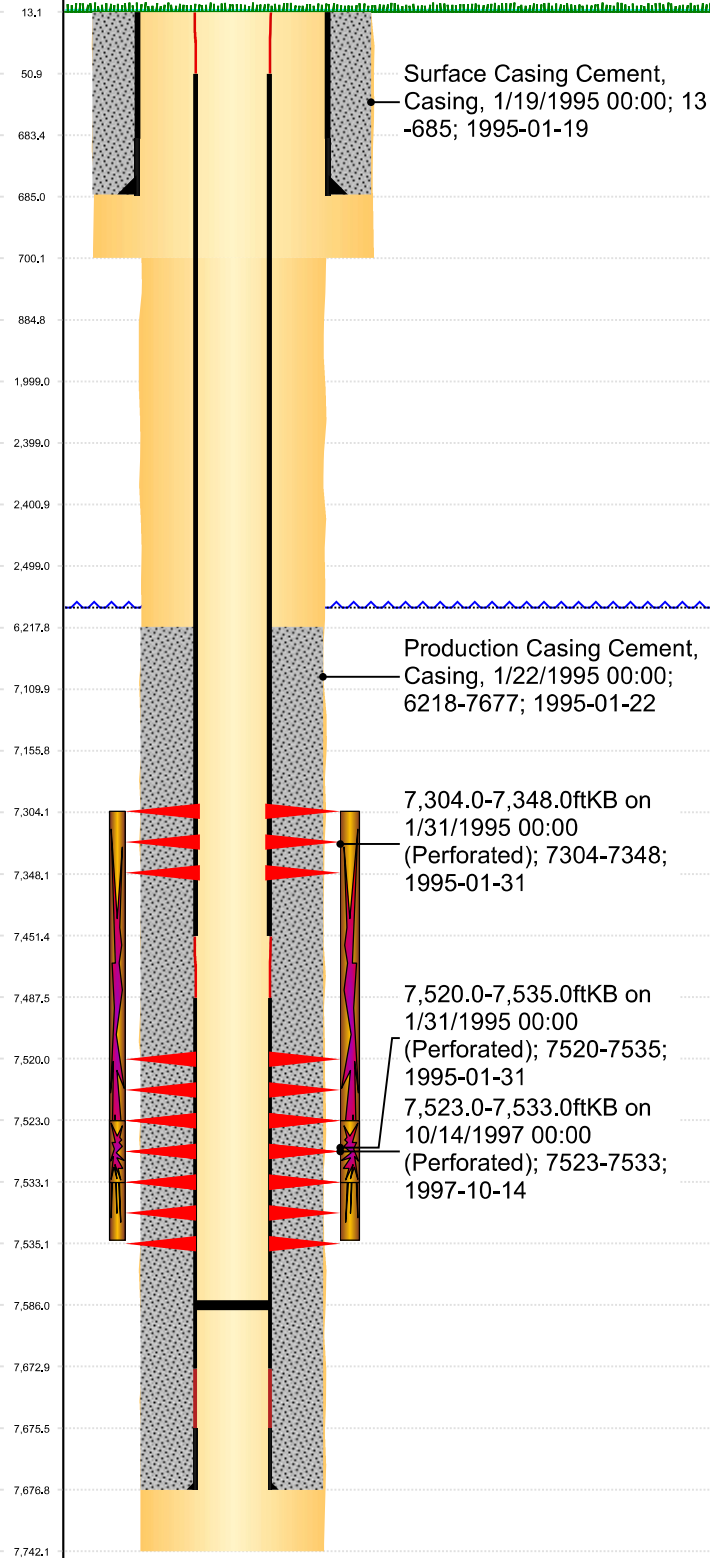
P&A Wellbore For State

Well Name: BOOTH N 25-5

ORIGINAL HOLE [Land]

MD
(ftK
B)

Vertical schematic (actual)



Well Header

Surface UWI 0512318082	Business Unit Rockies	Gov Auth Dist Evans	Prod Tree Loc Land
Orig. KB to Gnd (ft) 13.00	Original Spud Date 1/19/1995	Abandon Date	Well Sub-Status PR
High... N			

Comment

LIMITED ENTRY AND REBUILT MASTER VALVE

No Form 5A submitted to state for 1997 CD Refrac. Well on LPDCE Formation Tops spreadsheet but no depths entered as of 10/31/24. JH 10/31/24

Surface Location (Congressional)

Qtr 3 SW	Qtr 4 NW	Section 25	Twnshp 5	Twnsh... N	Range 67	Rng E/... W	Latitude (°) 40.3728686	Longitude (°) -104.849193967
-------------	-------------	---------------	-------------	---------------	-------------	----------------	----------------------------	---------------------------------

Wellbore Sections

Section Des	Hole Size (in)	Top Depth (ftKB)	Btm Depth (ftKB)
SURFACE	12 1/4	13.0	700.0
PRODUCTION	7 7/8	700.0	7,742.0

Casing Strings

Csg Des	Run Date	OD (in)	Wt/Len (lb/ft)	Grade	Top Depth (MD) (ftKB)	Set Depth (MD) (ftKB)
Surface	1/19/1995	8 5/8	24.00		13	685
Production	1/22/1995	3 1/2	7.70	N-80	13	7677

Cement

Des	Start Date	Top (ftKB)	Btm (ftKB)
SURFACE CASING CEMENT	1/19/1995	13.0	685.0
PRODUCTION CASING CEMENT	1/22/1995	6,218.0	7,677.0

Zone Statuses

Zone Name	Status Date	Status	Fluid Type	Job	Prod Method
NB-CD		PR			
NIOBRARA	3/1/1995	PR		DRILLING/COMPLETION - ORIGINAL, 1/19/1995...	Flowing
CODELL	3/1/1995	PR		DRILLING/COMPLETION - ORIGINAL, 1/19/1995...	Flowing
CODELL	11/5/1997	PR		RE-FRAC, 10/13/1997 00:00	Flowing

Perforation Data

Linked Zone	Explosive Type	Entered Shot Total	Top (ftKB)	Btm (ftKB)	Date
NIOBRARA, ORIGINAL HOLE		6	7,304.0	7,348.0	1/31/1995
CODELL, ORIGINAL HOLE		8	7,520.0	7,535.0	1/31/1995
CODELL, ORIGINAL HOLE		20	7,523.0	7,533.0	10/14/1997

Stim/Frac Stage

Zone	Start Date	Top (ftKB)	Btm (ftKB)
NB-CD, ORIGINAL HOLE	2/7/1995	7,304.0	7,535.0
CODELL, ORIGINAL HOLE	10/16/1997	7,523.0	7,533.0

Other In Hole

Run Date	Des	Make	OD (in)	Top (ftKB)	Btm (ftKB)

Logs

Date	Type	Depth Top (MD) (ftKB)	Btm (ftKB)
1/22/1995	COMPENSATED DENSITY	6,600	7,710.0
1/22/1995	INDUCTION	6,600	7,710.0
1/31/1995	CEMENT BOND	6,000	7,615.0
11/15/2013	GYRO	0	7,400.0

Wellbore Plug Back Total Depths

Date	Type	Com	PBTD (ftKB)
1/31/1995	FILL	DEPTH LOGGER ON CBL	7,622
2/21/2005	FILL	CLEANOUT TO 7586'	7,586