

LANE WELLS

FILE NO.	COMPANY OCCIDENTAL PETROLEUM CORPORATION		
	WELL EMIL OLSON # 1		
	FIELD WILDCAT		
	COUNTY WELD	STATE COLORADO	
	LOCATION: NW/4-SW/4		Other Services
	SEC 34	TWP 4N	RGE 6W
Permanent Datum	G.L.	Rev. 5145	Elevation: KB 5156
Log Measured from	K.B.	11 ft. Above Permanent Datum	DF 5145
Drilling Measured from	K.B.		GL 5145
Date	8-21-66		
Run No.	ONE		
Depth - Surface	2228		
Depth - Logger	540		
Bottom Logged Interval	539		
Top Logged Interval	181		
Casing - Surface	5/8" 278		
Casing - Logger	181		
Oil Flow			
Type Fluid in Hole	WATER		
Density and Viscosity			
pH and Fluid Loss			
Source of Sample			
Run @ Mass Temp.			
Run @ Mass Temp.			
Run @ Mass Temp.			
Source of Soil and Rock			
Run @ SW			
Mass Spec. Circ.			
Mass Spec. Temp. Deg. F.			
Run No. and Location	1.035 E. IL		
Recorded By	TAYLOR		
Reviewed By	P. NELSON		

Reproduced By
Rocky Mountain Well Log Service

Midland, Texas 79701

REFERENCE K113411



3

COMPLETION RECORD

SPUD DATE

COMP DATE

DST RECORD

CASING RECORD

PERFORATING RECORD

ACID FRACTION SHOT

IP

GOR

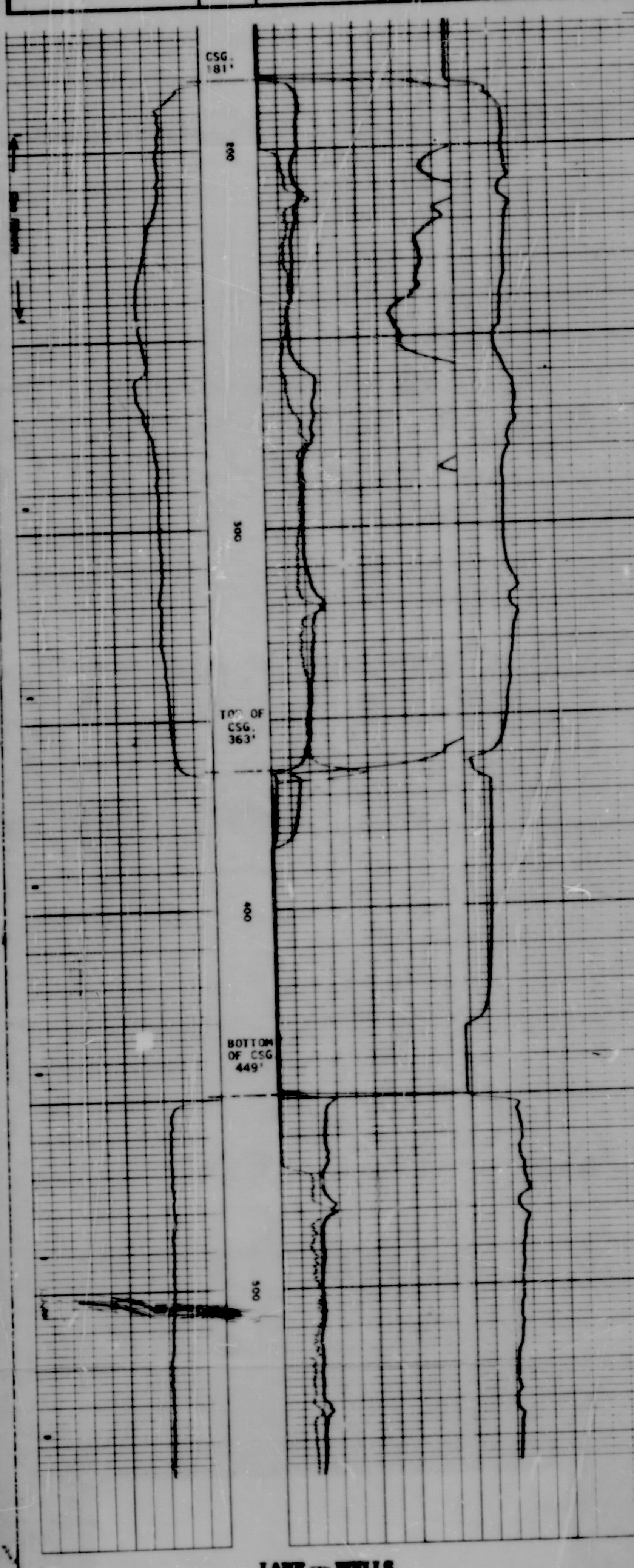
GR

TP

CP

REMARKS:

SPONTANEOUS POTENTIAL millivolts	DEPTH	RESISTIVITY Ohms m ² /m	RESISTIVITY Ohms m ² /m
20 - 100 +		16" NORMAL AM=16"	64" NORMAL AM=64"
		0 10	0 50
		0 50	0 500
		0 500	0 500
		LATERAL 50	
		AO=18' 8" 500	



LANE WELLS

Microfilmed by M.J. Systems
Filmed from half scale paper print
reproductions, which are available
through Petroleum Information, Inc.
A subsidiary of A.C. Nielson Company