

Schlumberger COMPENSATED NEUTRON POROSITY

COUNTY ROUTT LOCATION WILDCAT WELL #1 STELLA LATKER COMPANY UNION OIL CO.

COMPANY UNION OIL COMPANY

WELL #1 STELLA LATKER

FIELD WILDCAT

COUNTY ROUTT STATE COLORADO

LOCATION NW. SE. NW

Sec. 29 Twp. 4N Rge. 89W

Permanent Datum: G.L. Elev. 6768

Log Measured From: K.B. 11 Ft. Above Perm. Datum

Drilling Measured From: K.B. G.L. 6768

Other Services: DIL FDC-GR

Date 12-10-71

Run No. 01N

Depth Driller 2994

Depth Logger 2992

Blm. Log Interval 2990

Top Log Interval 384

Casing Driller 2 5/8 384

Casing Logger 384

Bit Size 7 7/8"

Type Fluid in Hole FIRM

Dens. Visc. 9.1 39

pH Fluid Loss 10.0 6.2 ml

Source of Sample FLOW LINE

R. Meas. Temp. 3.19 75 F

R. Meas. Temp. 2.66 81 F

R. Meas. Temp. 1.8 75 F

Source Ref. R. Meas. Temp. 2.2 107 F

Time Since Circ. 5 HOURS

Max. Rec. Temp. 102 F

Equip. Location 7025 VERNAL

Recorded By K. FARR

Witnessed By C. KRIVANEK

Reproduced By Electrical Log Services MIDLAND, TEXAS 79701

REFERENCE K 9257C

COMPLETION RECORD

SPUD DATE

COMP DATE

DST RECORD

API NO.

CASING RECORD

PERFORATING RECORD

ACID. FRAC SHOT

I.P.

GOR GR

TP CP

REMARKS:

REMARKS I. D. #35992

Changes in Mud Type or Additional Samples

Date Sample No.

Depth - Driller

Type Fluid in Hole

Dens. Visc.

pH Fluid Loss

Source of Sample

R. Meas. Temp.

R. Meas. Temp.

R. Meas. Temp.

Source Ref.

Time Since Circ.

Max. Rec. Temp.

Equip. Location

Recorded By

Witnessed By

Scale Changes

Type Log

Depth

Scale Up Hole

Scale Down Hole

Equipment Data

Tool Type

Pad Type

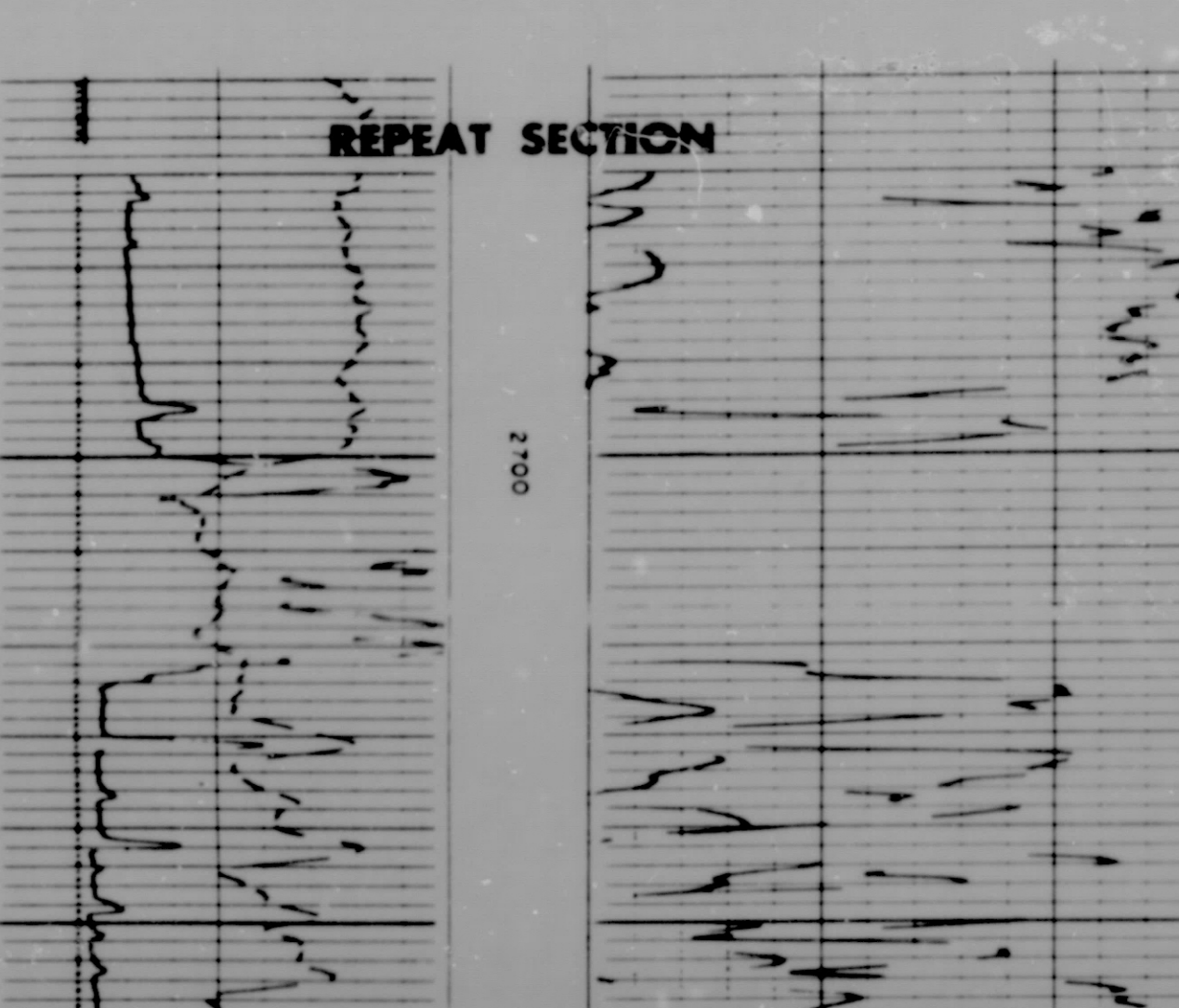
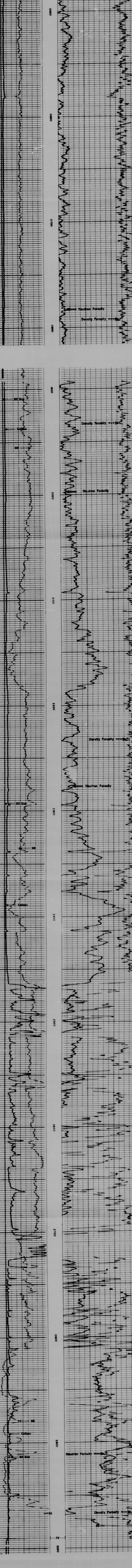
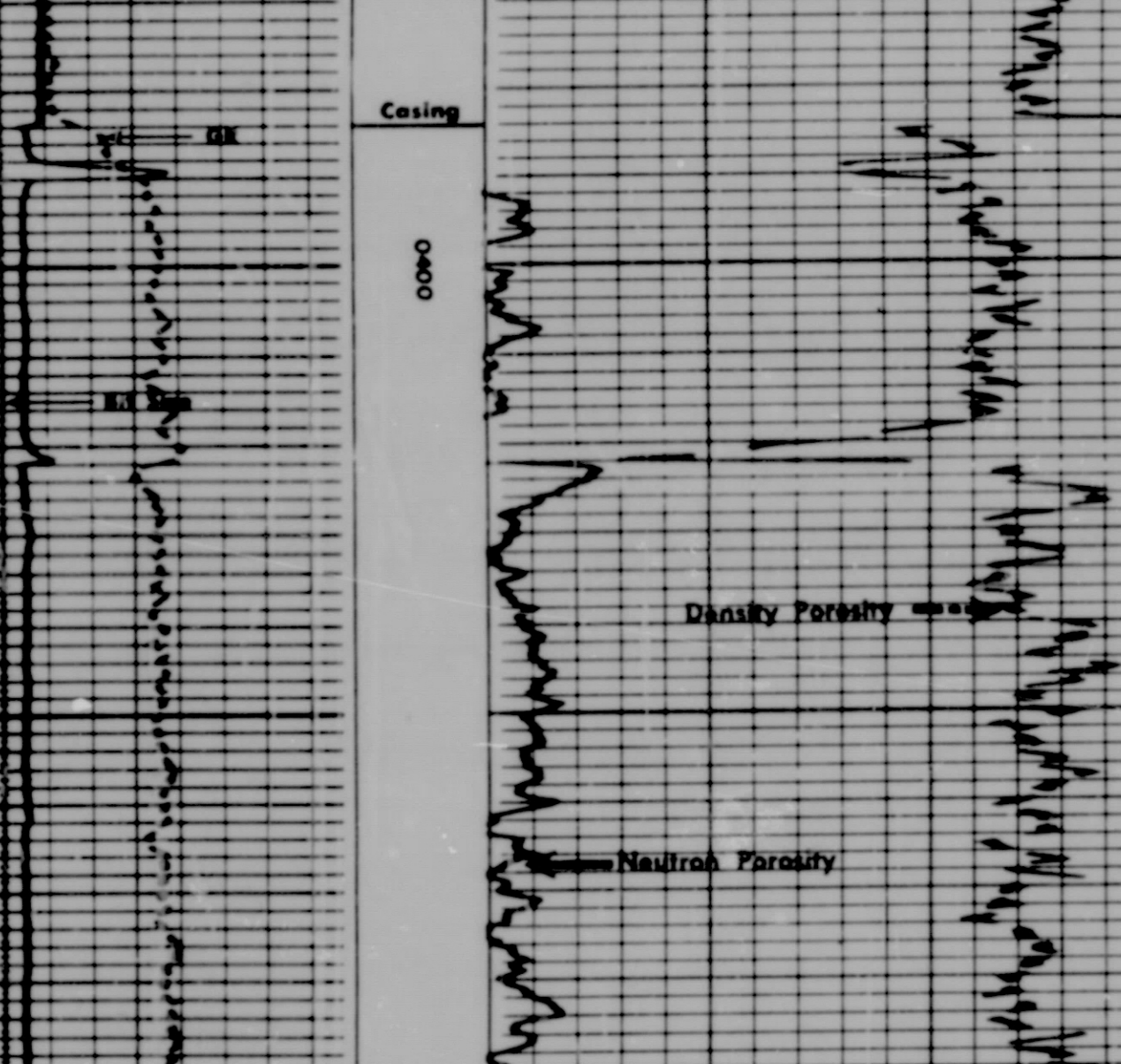
Tool Pos.

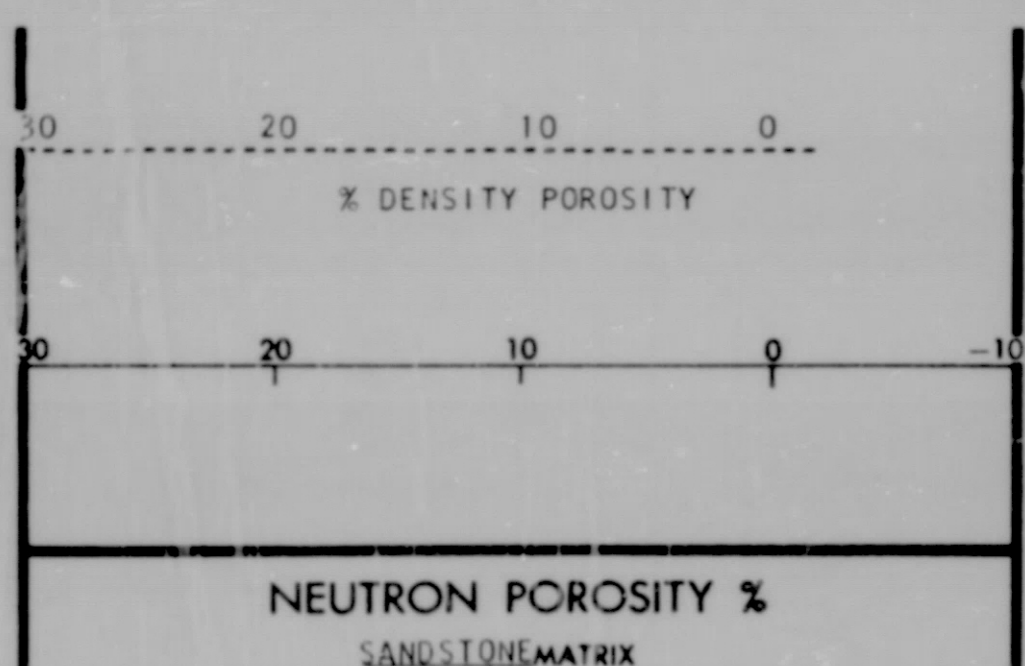
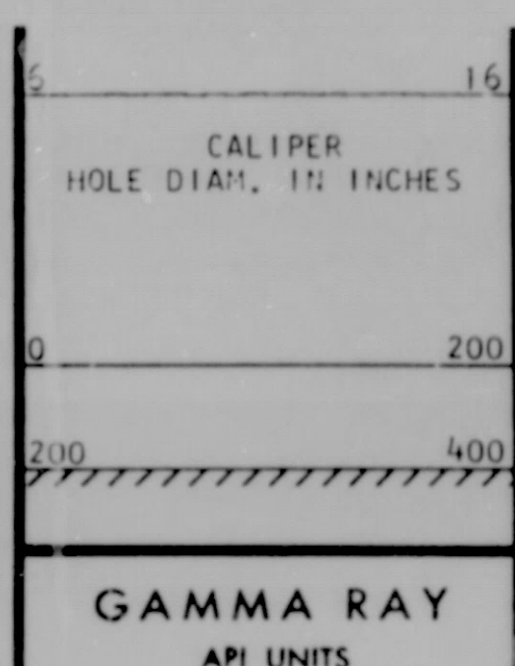
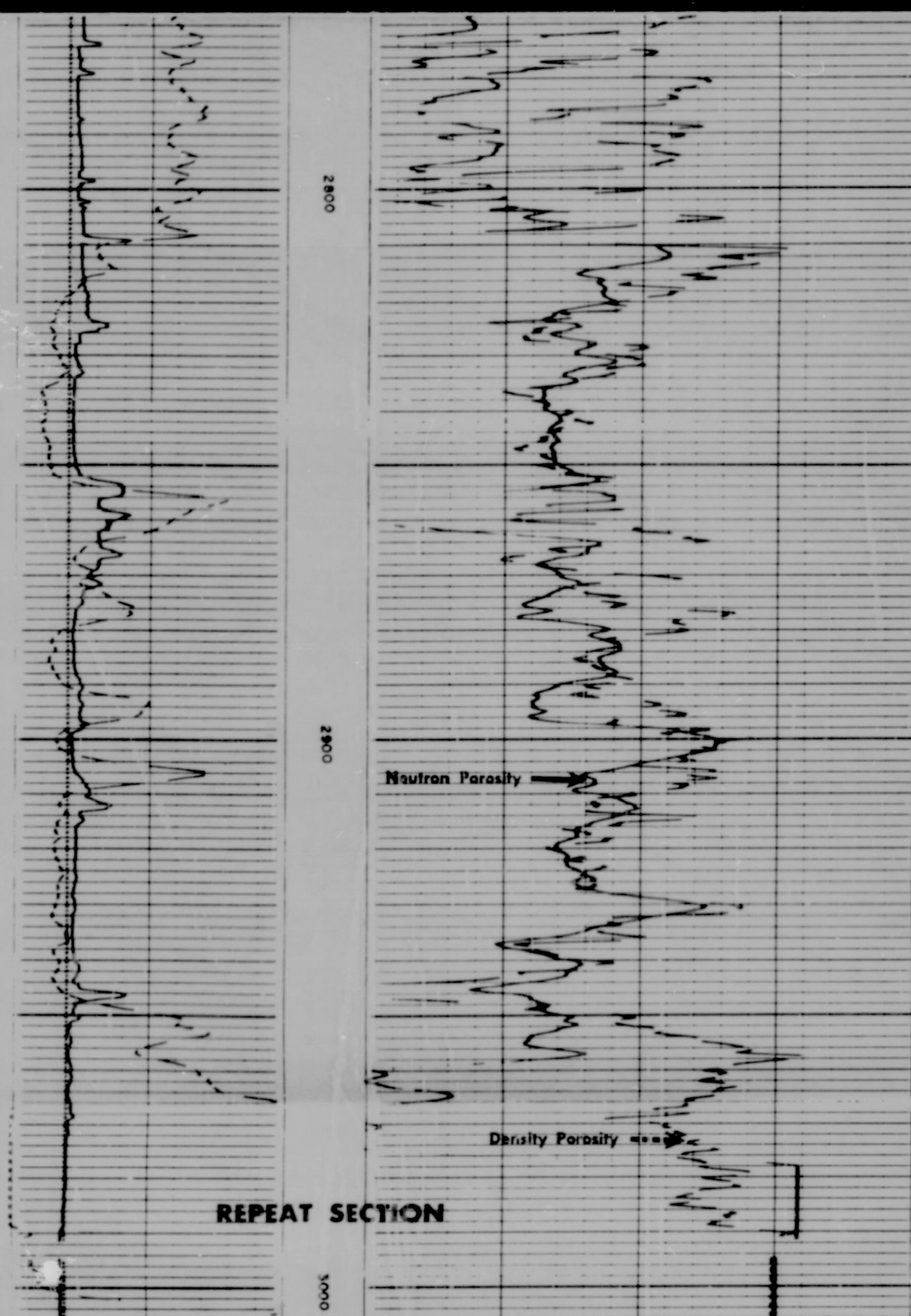
Other

RUN ON SANDSTONE

HOLE DIA. - AUTO

LOGGING SPEED 1800 EPH





COMPANY UNION OIL COMPANY

WELL #1 STELLA LATKER

FIELD WILDCAT

COUNTY ROUTT STATE COLORADO

SCHL. FR 2990

SCHL. TD 2992

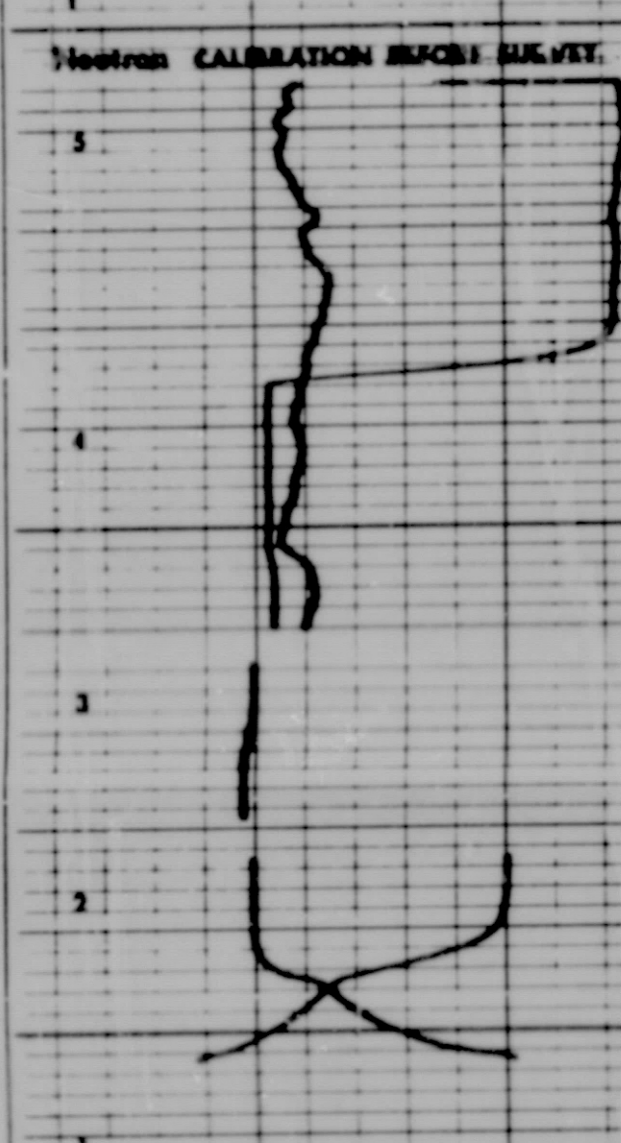
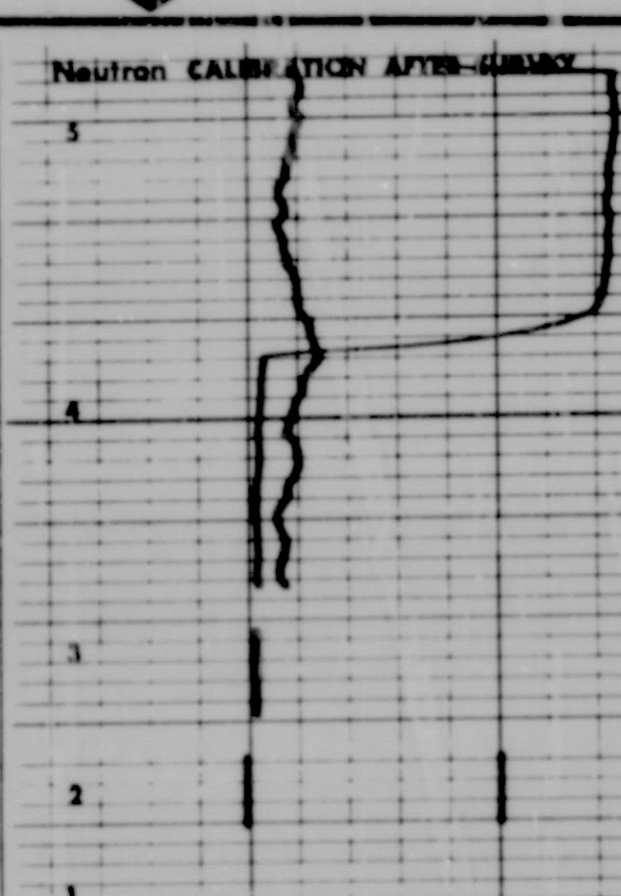
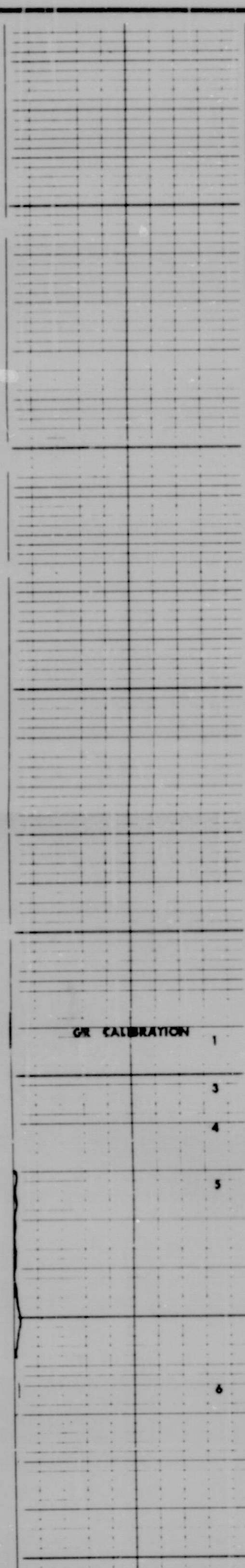
DRLR TD 2994

Elev: KB 6779

DF ---

GL 6768

CALIBRATION DATA



CALIBRATION DATA

COMPANY UNION OIL COMPANY

WELL #1 STELLA LATKER

FIELD WILDCAT

COUNTY ROUTT STATE COLORADO

SCHL. FR 2990

SCHL. TD 2992

DRLR TD 2994

Elev: KB 6779

DF ---

GL 6768