

Schlumberger COMPENSATED FORMATION DENSITY LOG

COMPANY UNION OIL COMPANY

WELL #1 STELLA LATKER

FIELD WILDCAT

COUNTY ROUTT STATE COLORADO

Location: NW, SE, NW

Sec. 29 Twp. 4N Rge. 89W

Other Services: OIL CNL

Permanent Datum: GL ; Elev.: 6768

Log Measured From: KB ; 11 Ft. Above Perm. Datum

Drilling Measured From: KB ; Elev.: 6772

Date 12-10-71

Run No. ONE

Type Log GAMMA-GAMMA

Depth 2994

Depth 2992

Bottom logged interval 2990

Top logged interval 384

Type fluid in hole FGM

Salinity, PPM Cl. 0.1

Density 3.1

Level FULL

Max rec. temp., deg. F. 107

Operating rig time 5 HOURS

Recorded by K. FARR

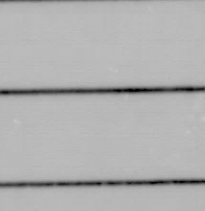
Witnessed by C. KILLANEK

RUN NO. BORE HOLE RECORD To Size Wgt. From To

ONE 7 7/8 384 2994 7" -- SURFACE 384

Reproduced By
Electrical Log Services
Midland, Texas 79701

REFERENCE K 9256M



COMPLETION RECORD

SPUD DATE

COMP DATE

DST RECORD

API NO.

CASING RECORD

PERFORATING RECORD

ACID FRAC SHOT

I P

GOR GR

T P C P

REMARKS:

EQUIPMENT DATA									
Run No.	PG P.	PGH.	PGH. A	PGS.	Source No.	SFT. 106	SGH.	Logging Unit	Location
1	299-FA	674-D	451	235-E	2613	278	---	7025	VERNAL
2									
3									
CALIBRATION DATA									
FDC - Before Log - ACPS					FDC - After Log - ACPS				
Run No.	API Scale	Background CPS	Total CPS	P.	P.	P.	P.	P.	P.
1	0-200	120	510	544	760	544	760	544	760
2									
3									
LOGGING DATA									
General				Gamma Ray			FDC Selectors		
Run No.	From	To	Speed	Tc	API Scale	Liquid Density	Grain Density	Hole Fluid	Porosity Scale
1	2990	384	30	2	0-200	1.0	2.65	LIQUID	20/TRK
2									
3									
MUD DATA									
Run No.	Rm.	@	% Solids by Vol.	% Oil by Vol.	% Water by Vol.	Viscosity, Sec. @	@	%	Solids, Av. Sp. Gr.
1		@	%	%	%	@	@	%	
2		@	%	%	%	@	@	%	
3		@	%	%	%	@	@	%	
Remarks: 1. O. #35932									

All interpretations are opinions based on inferences from electrical or other measurements and are not guaranteed. The accuracy or correctness of any interpretation and we shall not accept in the case of error or misinterpretation an error shall be liable or responsible for any loss, cost, damages or expenses incurred or sustained by anyone resulting from any interpretation made by any of our officers, agents or employees. These interpretations are also subject to Clause 7 of our General Terms and Conditions as set out in our current Price Schedule.

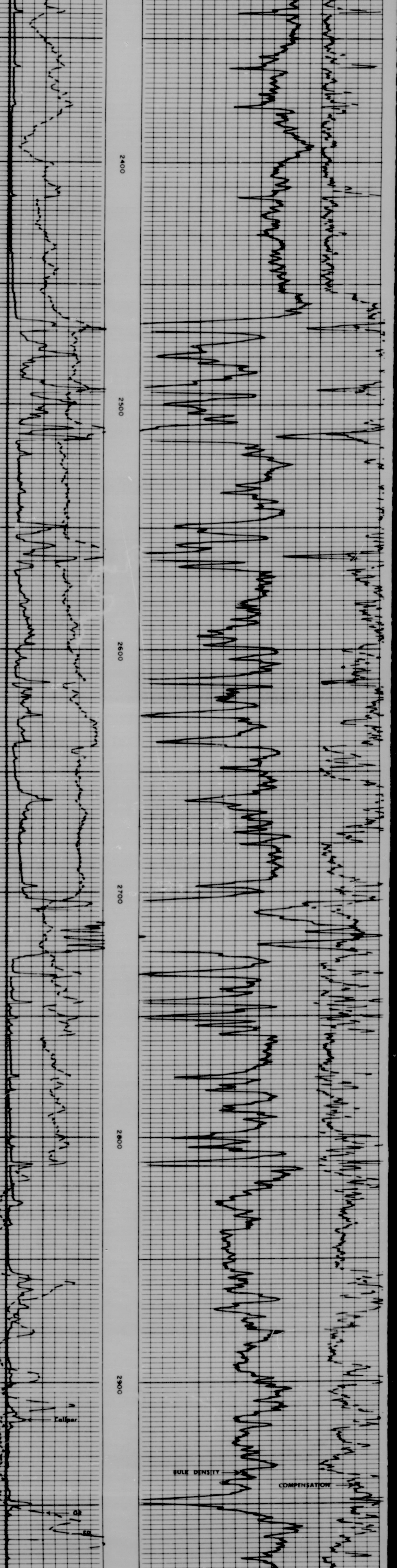
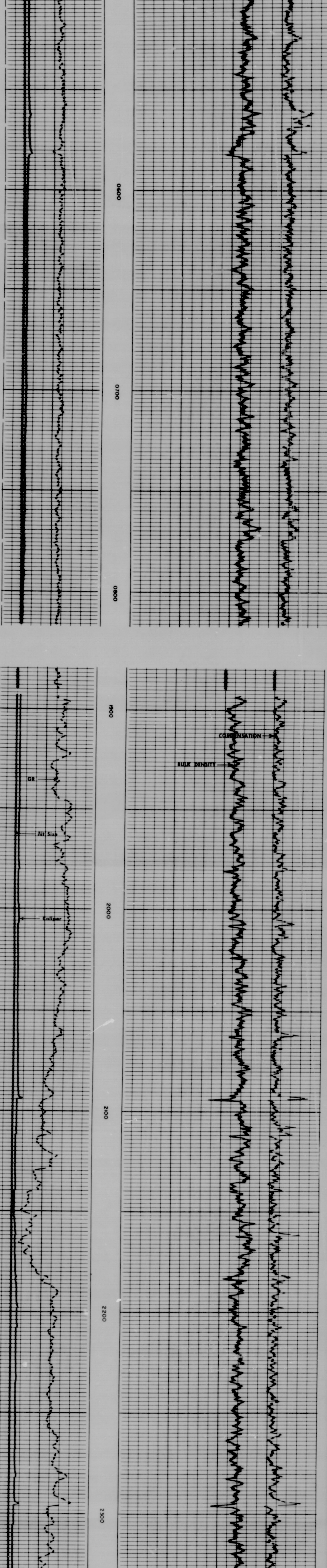
CALIPER HOLE DIAM. IN INCHES

DEPTHS

GAMMA RAY API UNITS

BULK DENSITY GRAMS/CC.

CORRECTION GRAMS/CC.



REPEAT SECTION

2700

2800

2900

REPEAT SECTION

3000

0 200

200 400

GAMMA RAY
API UNITS

6 16

CALIPER

HOLE DIAM. IN INCHES

DEPTHS

2.0 2.5 3.0

1.0 1.5 2.0

BULK DENSITY
GRAMS/CC.

.25 0 .25

CORRECTION
GRAMS/CC.

COMPANY UNION OIL COMPANY
WELL #1 STELLA LATKER
FIELD WILDCAT
COUNTY ROUTT STATE COLORADO

Rm 3.19 @ 75 F
BHT 107 F

SCHL. FR 2992
SCHL. TD 2992
DRIL. TD 2994
Elev. KB 6772
DF ---
GL 6768

CALIBRATION DATA

CALIBRATION AFTER SURVEY

5

3

2

1

CALIBRATION BEFORE SURVEY

5

3

2

1

CALIBRATION DATA

COMPANY UNION OIL COMPANY
WELL #1 STELLA LATKER
FIELD WILDCAT
COUNTY ROUTT STATE COLORADO

Rm 3.19 @ 75 F
BHT 107 F

SCHL. FR 2992
SCHL. TD 2992
DRIL. TD 2994
Elev. KB 6772
DF ---
GL 6768