

SCHLUMBERGER

DUAL INDUCTION - LATEROLOG

COUNTY

WILDCAT

WELL

#1 STELLA LATKER

COMPANY

UNION OIL CO.

ROUT

STATE

COLORADO

LOCATION

NW, SE, NW

Sec.

29

Twp.

4N

Rge.

89W

Permanent Datum

GL

Elev.

6768

Elev.

K.B. 6772

Log Measured From

KB

11

Fr. Above Perm. Datum

D.F.

GL

6768

Date

12-10-71

Run No.

DNE

Depth-Driller

2994

Depth-Logger

2992

Btm. Log Interval

2986

Top Log Interval

3004

Casing-Driller

5/8 @ 384

Casing-Logger

384

Btt Size

7/8"

Type Fluid in Hole

GM

Dens.

Visc.

9.1

39

pH

Fluid Loss

10.0

6.2

ml

Source of Sample

FLOWLINE

R_{sh} @ Meas. Temp.

1.9

@ 75

"F

"F

"F

"F

"F

"F

R_{mt} @ Meas. Temp.

2.66

@ 81

"F

"F

"F

"F

"F

R_{mt} @ Meas. Temp.

1.8

@ 75

"F

"F

"F

"F

"F

Source R_{sh} - R_{mt}

R_{sh} @ BHT

2.2

@ 107

"F

"F

"F

"F

R_{mt} @ BHT

Time Since Circ.

1

HOURS

Max. Rec. Temp.

Equip. Location

7025

VERNAL

Recorded By

K. FARR

Witnessed By

L. KRIVANEK

Other Services

FDC-GR

CNL

The well name, location and borehole reference data were furnished by the customer.

Reproduced By

Electrical Log Services

MIDLAND, TEXAS 79701

REFERENCE K 92561

12

COMPLETION RECORD

SPUD DATE

COMP DATE

DST RECORD

API NO.

CASING RECORD

PERFORATING RECORD

ACID FRAC SHOT

IP

GOR

GR

TP

CP

REMARKS

REMARKS I. O. #35992

Changes in Mud Type or Additional Samples

Date - Sample No.

Depth-Driller

Type Log

Depth

Scale Changes

Scale Up Hole

Scale Down Hole

Dens.

Visc.

pH

Fluid Loss

ml

Source of Sample

R_{sh} @ Meas. Temp.

@

"F

"F

"F

"F

R_{mt} @ Meas. Temp.

@

"F

"F

"F

"F

Source R_{sh} - R_{mt}

R_{sh} @ BHT

@

"F

"F

"F

R_{mt} @ BHT

@

"F

"F

"F

Run No.

C.O.

S.O.

Equip. PANEL No.

DTP-C-241

Used: CART No.

DIC-

SONDE No.

DLS-DB-35

IAP No.

MIP-B-260

S.B.R.

4

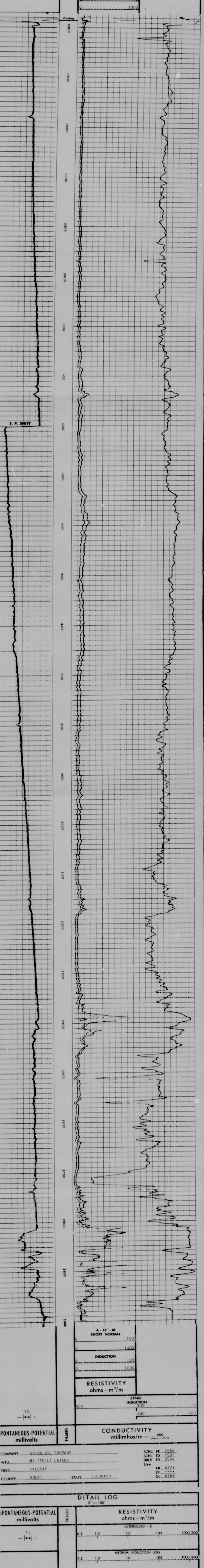
Check one, filling in blanks where applicable:

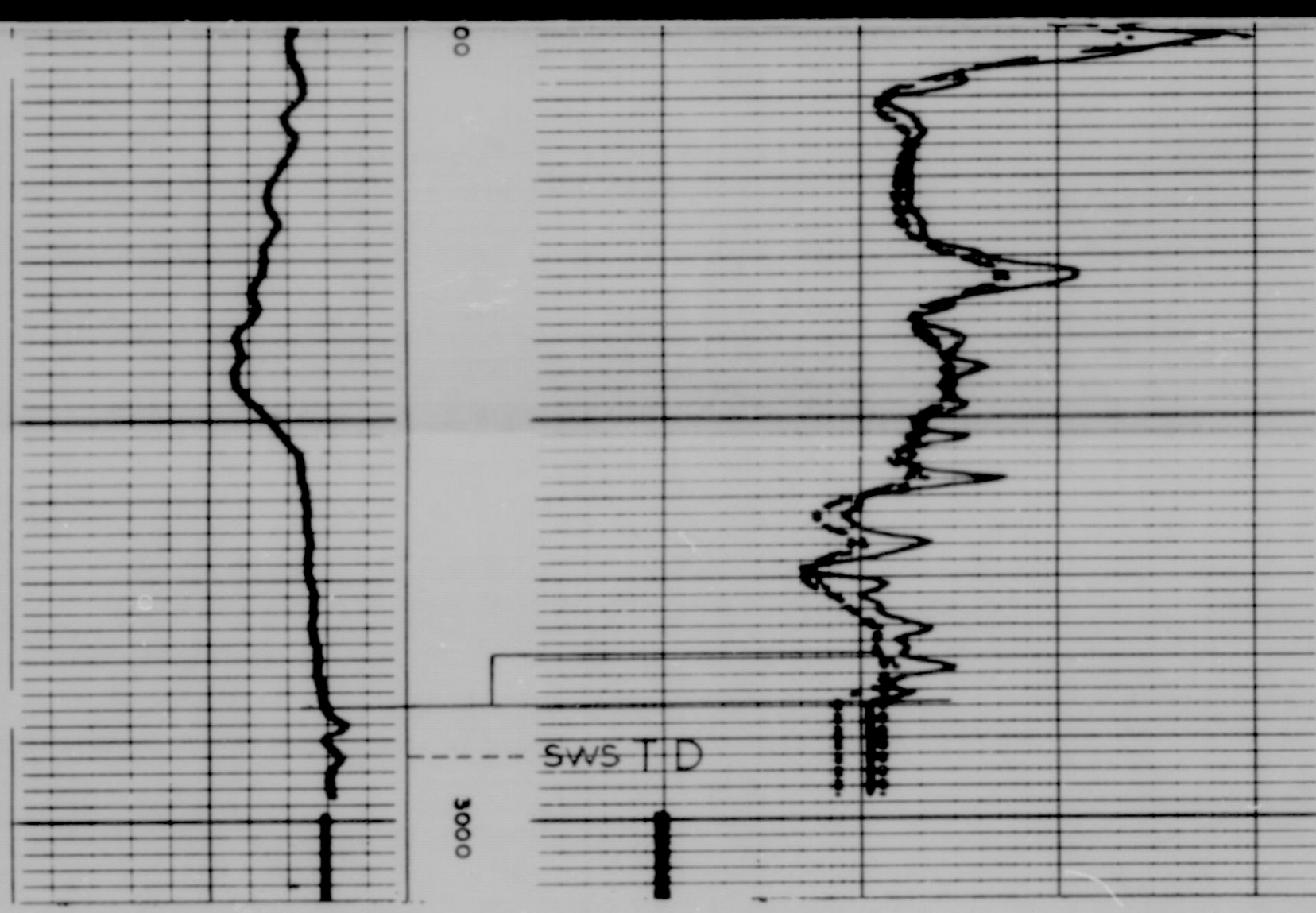
☒ Surface determined sonde errors used for ILM and ILD

☐ ILM and ILD sonde errors corrected for borehole signal at R_{sh}

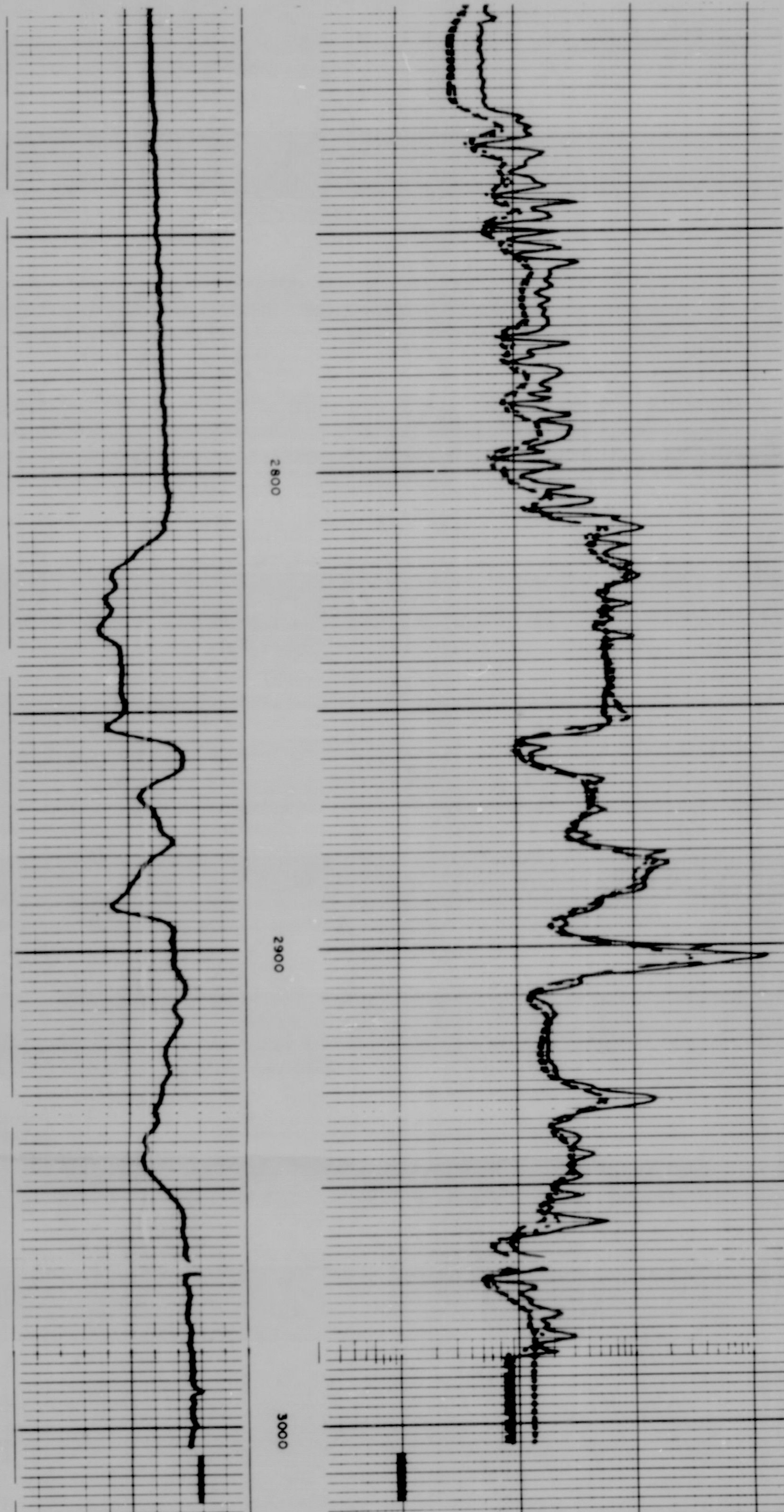
☐ ILM and ILD zeros set in hole at depth of

feet





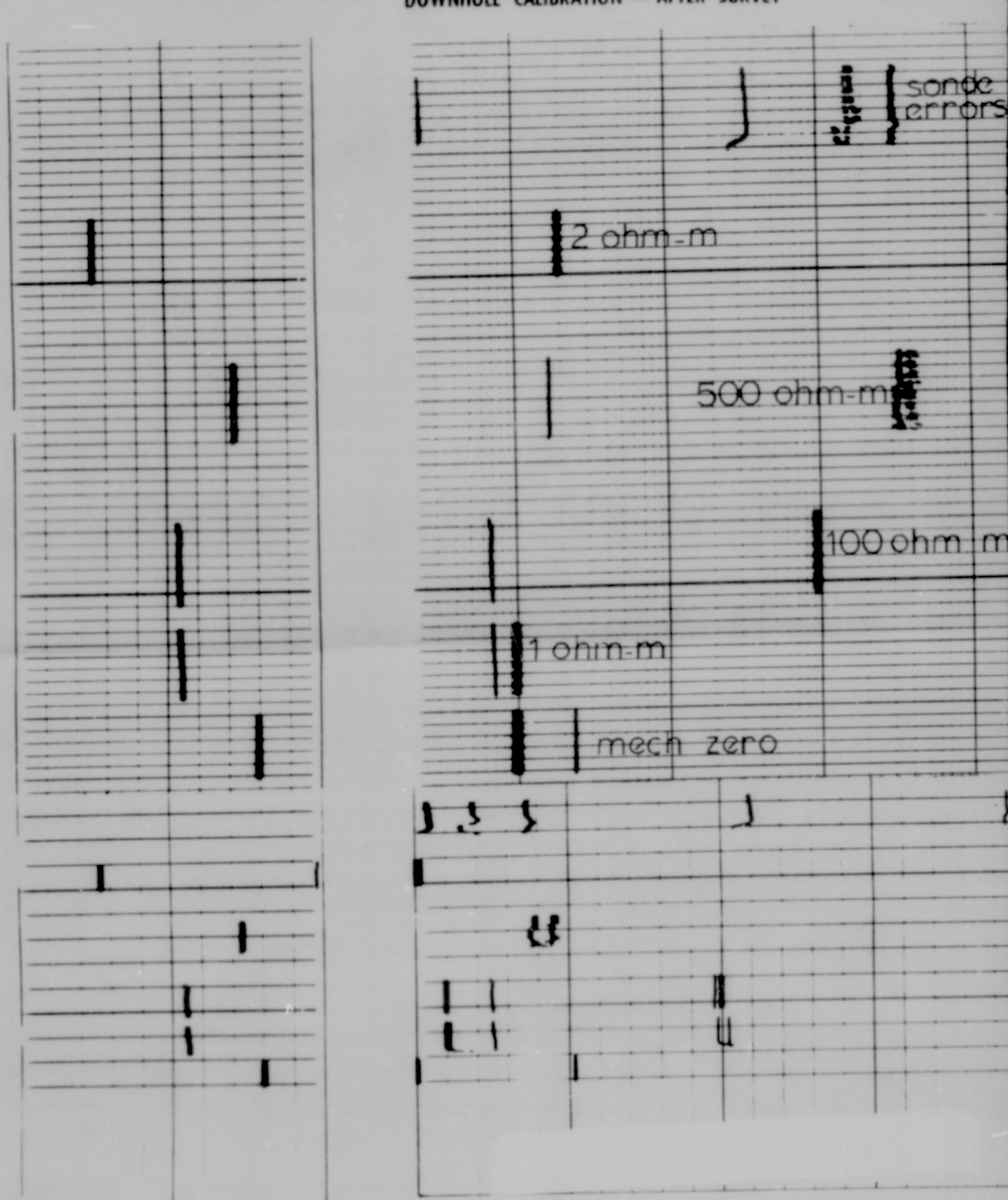
REPEAT SECTION



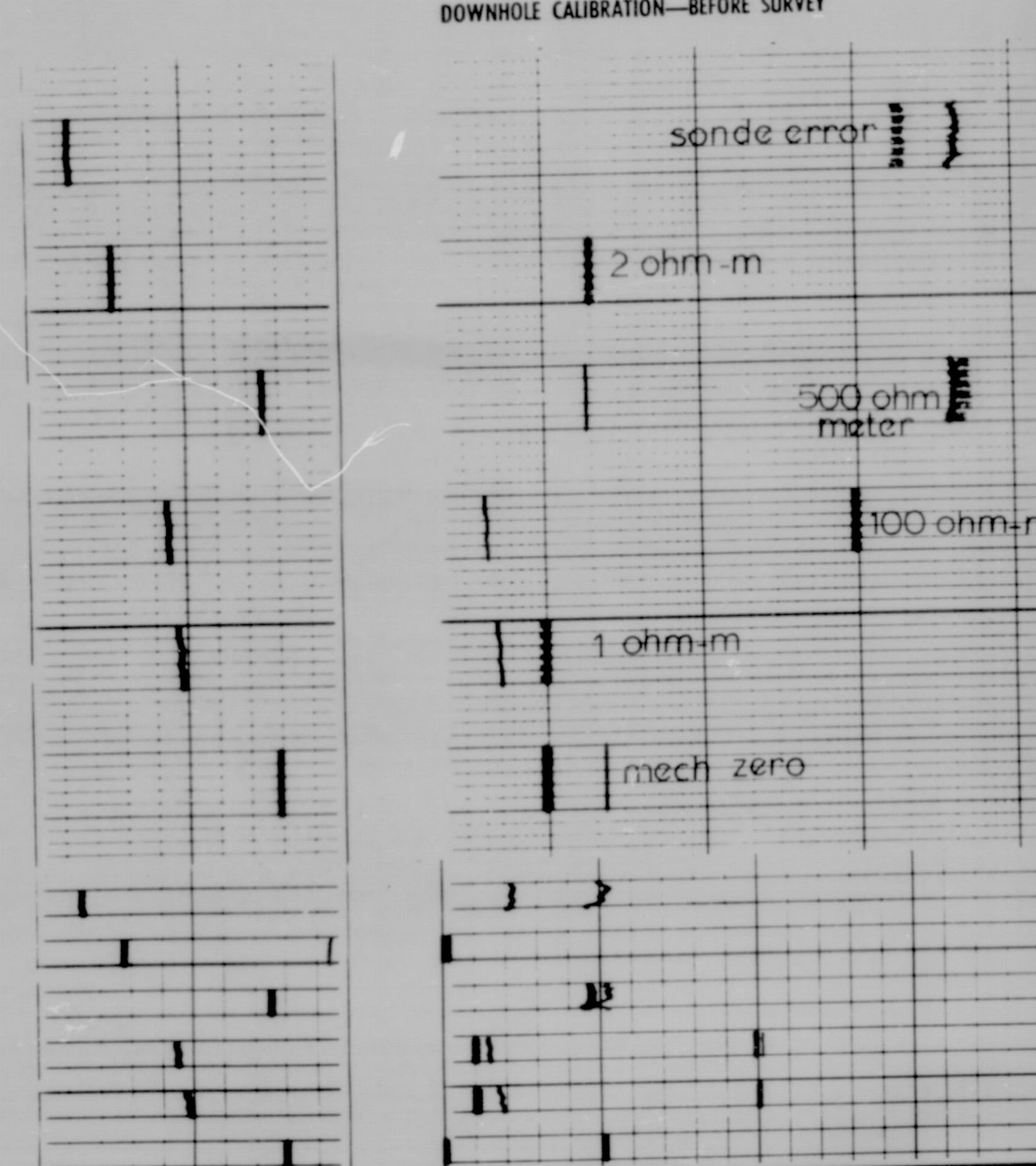
SPONTANEOUS-POTENTIAL millivolts		DEPTHS		RESISTIVITY ohms - m ² /m	
COMPANY UNION OIL COMPANY		WELL #1 STELLA LATKER		SCHL. FR 2986	
FIELD WILDCAT		COUNTY ROUTT STATE COLORADO		SCHL. TD 2992	
				DRLR TD 2994	
				Elev: KB 6779	
				DF ---	
				GL 6768	

CALIBRATION DATA

DOWNHOLE CALIBRATION — AFTER SURVEY



DOWNHOLE CALIBRATION — BEFORE SURVEY



CALIBRATION DATA

COMPANY UNION OIL COMPANY		WELL #1 STELLA LATKER		SCHL. FR 2986	
FIELD WILDCAT		COUNTY ROUTT STATE COLORADO		SCHL. TD 2992	
				DRLR TD 2994	
				Elev: KB 6779	
				DF ---	
				GL 6768	