









## COMPENSATED DENSITY AFTER SURVEY TOOL CHECK

## DENSITY DETECTOR

## FIELD CHECK

	BEFORE	AFTER	UNITS
LS DETECTOR	214.3	214.6	CPS
SS DETECTOR	396.4	397.5	CPS
BULK DENSITY	2.592	2.592	G/CC
DENSITY CORR	0.001	0.002	G/CC

## COMPENSATED NEUTRON BEFORE SURVEY TOOL CHECK

## NEUTRON DETECTOR

## FIELD CHECK

## UNITS

LS DETECTOR	1379.9	CPS
SS DETECTOR	923.1	CPS
TOOL RATIO:	0.668	SS/LS
TOOL POROSITY:	7.96	LM-PU

TOOL CONSTANT: 1.033

SURFACE TEMPERATURE: 70° F

DEPTH: 0.0 FT

BIT SIZE: 7.87 IN

## COMPENSATED DENSITY BEFORE SURVEY TOOL CHECK

## DENSITY DETECTOR

## FIELD CHECK

## UNITS

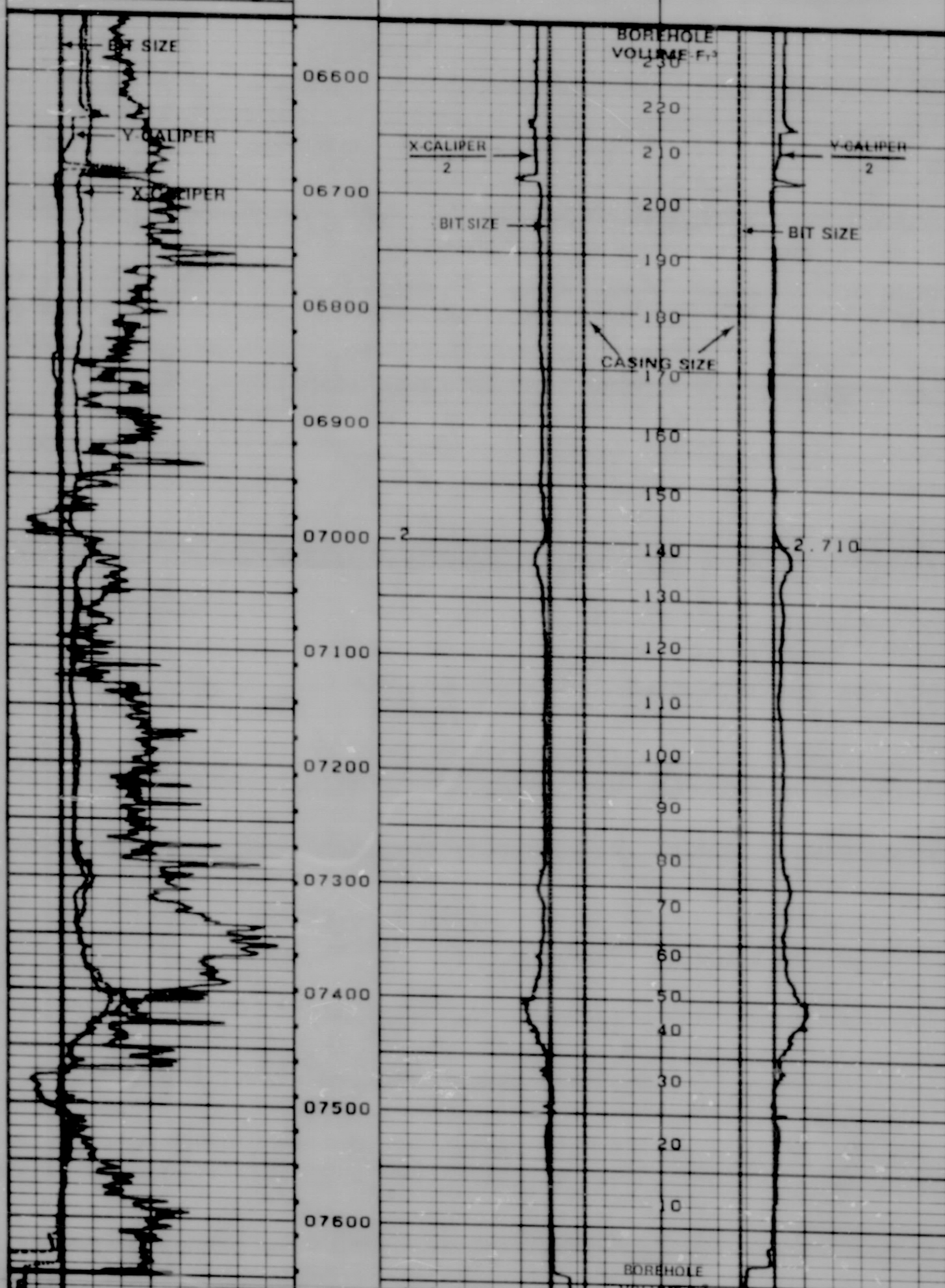
LS DETECTOR	214.3	CPS
SS DETECTOR	396.4	CPS
BULK DENSITY	2.592	G/CC
DENSITY CORR	0.001	G/CC

05-12-84 01:36 6548.0 281005 0069-22 0 0001-14 3

6 CALIPER X 16  
 6 CALIPER Y 16  
 0 GR API 200

10 X CALIPER/2 0 0 Y CALIPER/2 10

## X-Y CALIPER W/ BOREHOLE VOLUME



6 CALIPER X 16  
 6 CALIPER Y 16  
 0 GR API 200

10 X CALIPER/2 0 0 Y CALIPER/2 10

05-12-84 01:02 7866.5 281005 0069-22 0 0001-14 3

Company FARNOLL COMPANY

Well HAYS NO. 1

Field WATTENBURG

County WELD

State COLORADO

GO FR 7646

GO TD 7648

DRLR TD 7635

Elev:

KB 5855

DF 5864

GL 5830