

GEARHART COMPENSATED DENSITY LOGS FORM

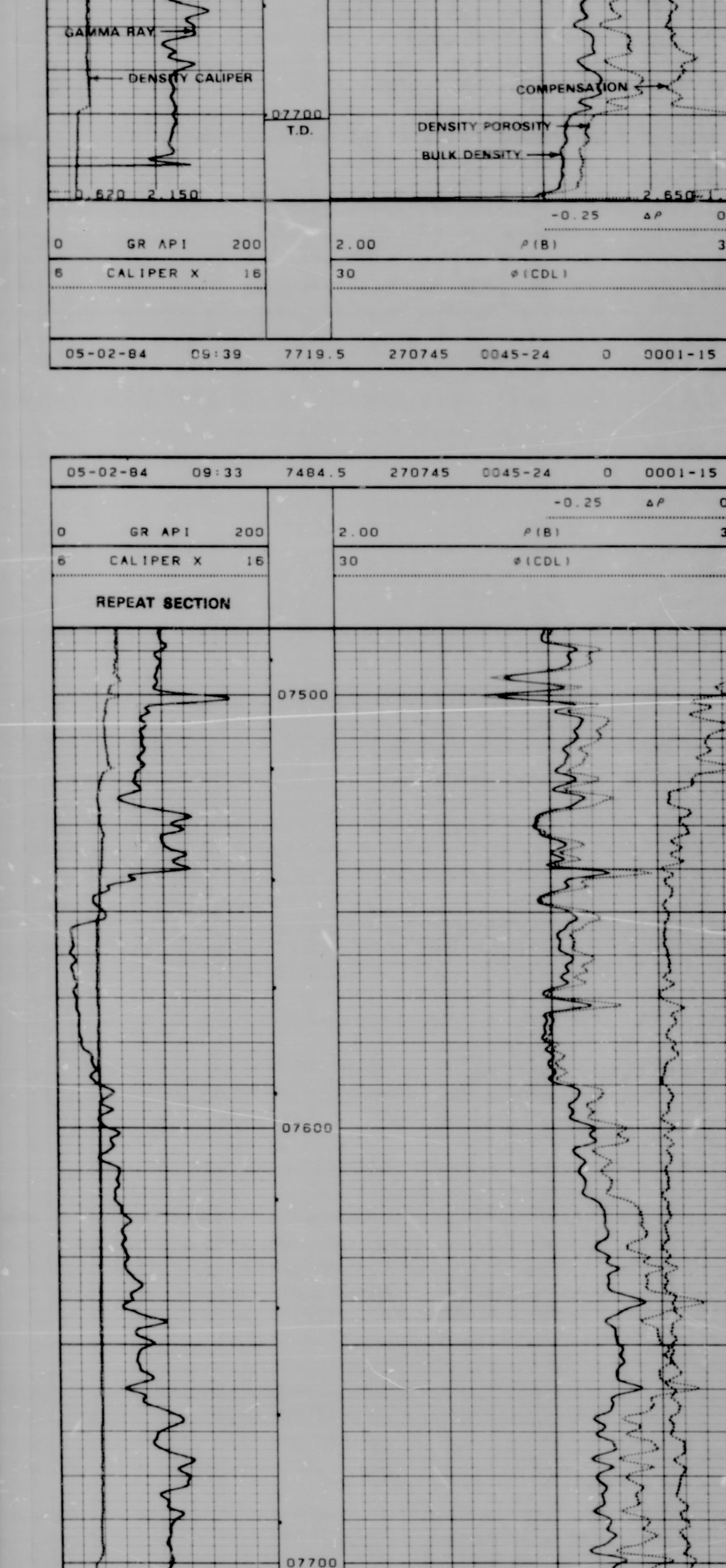
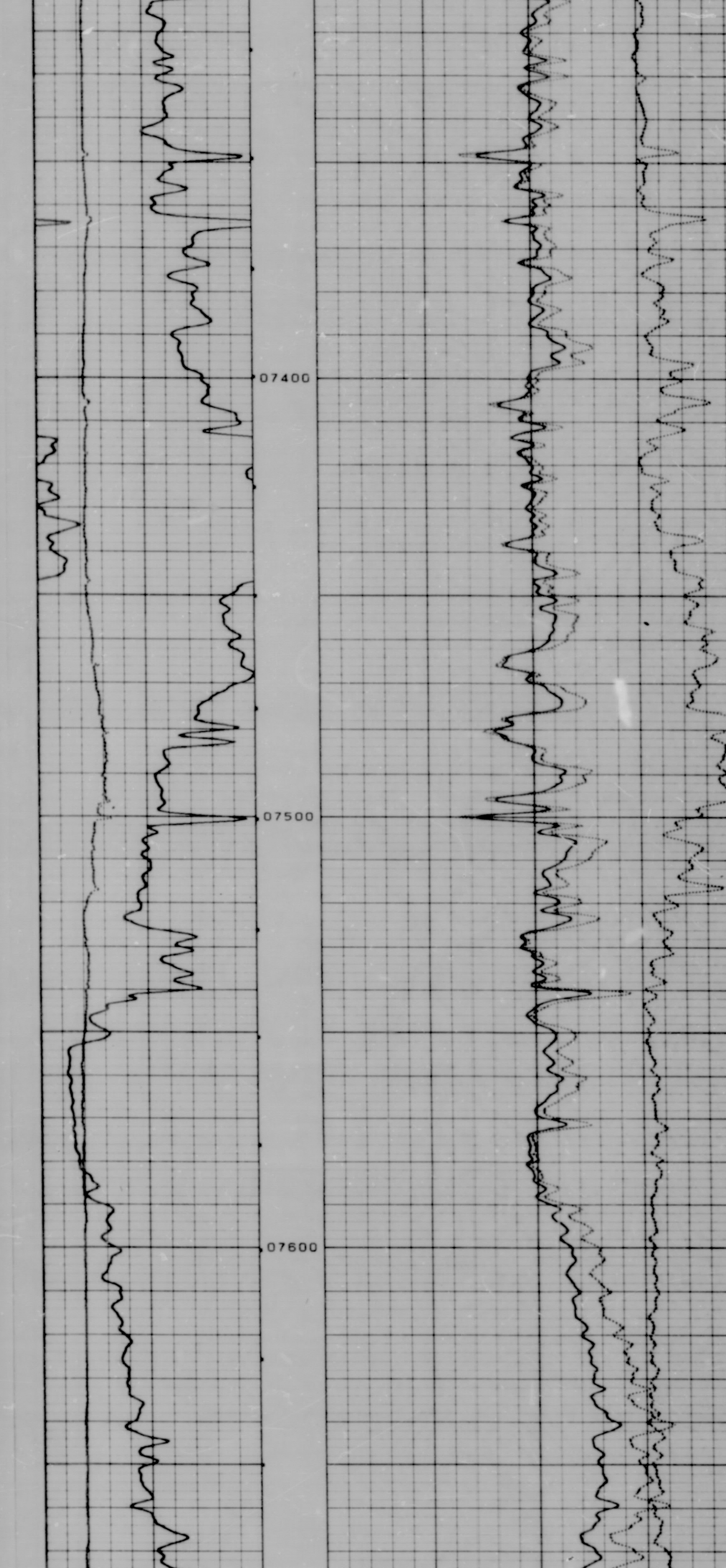
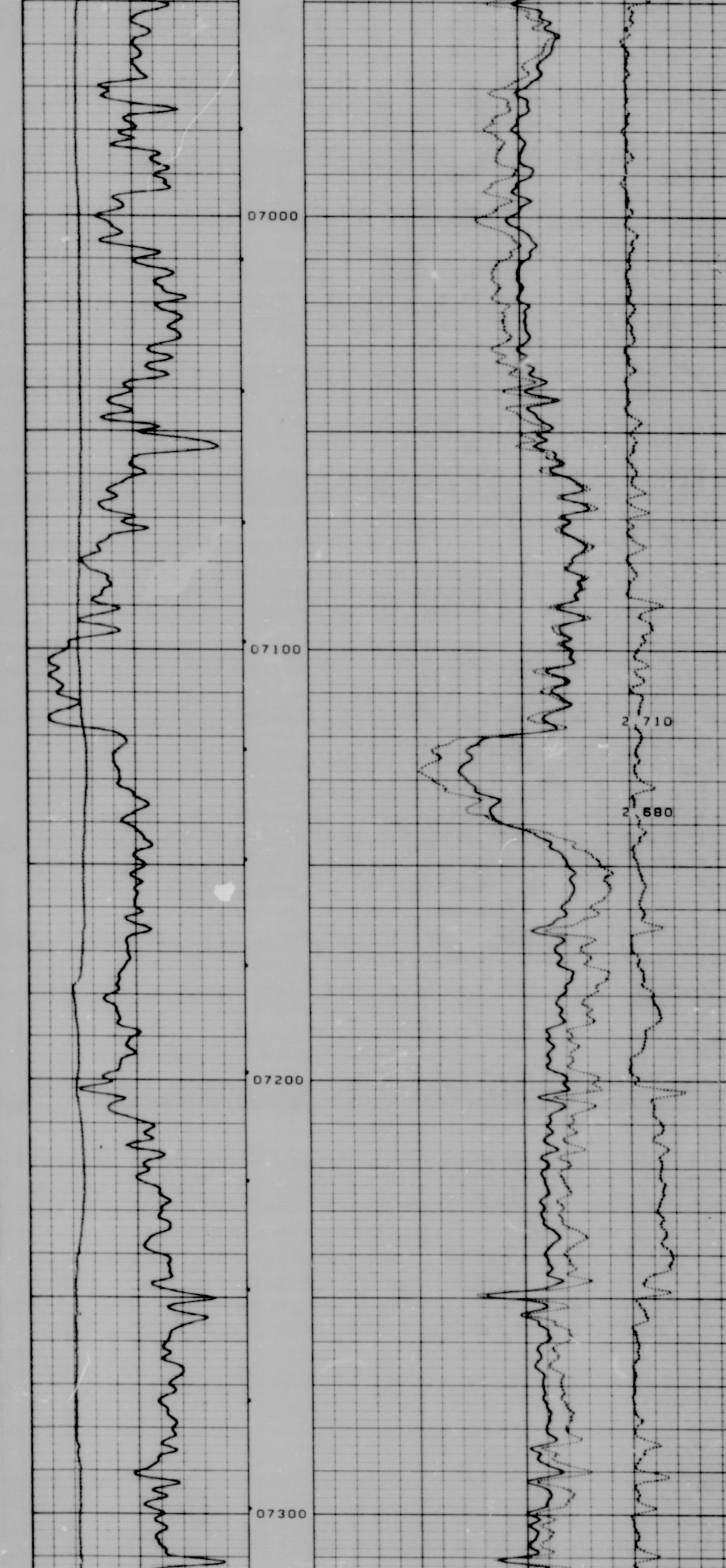
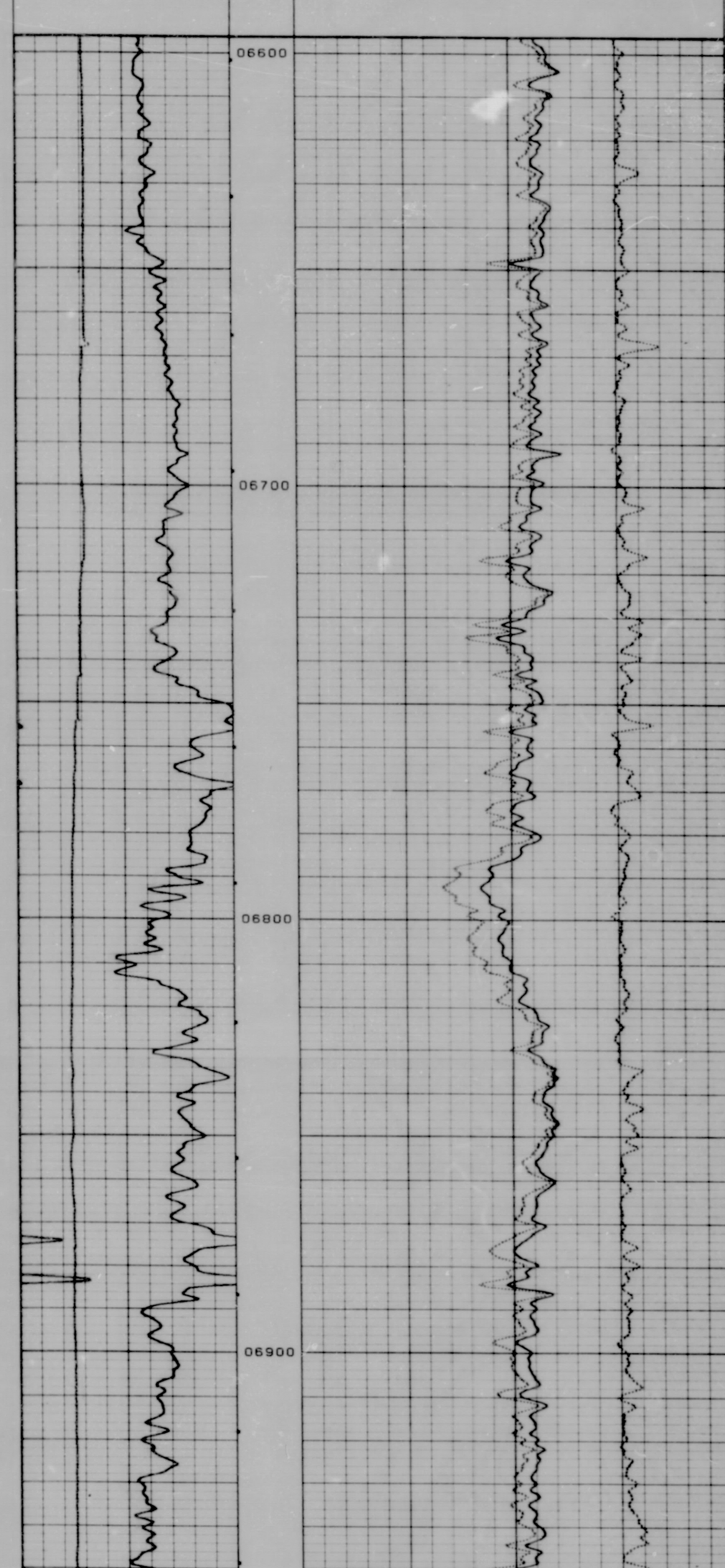
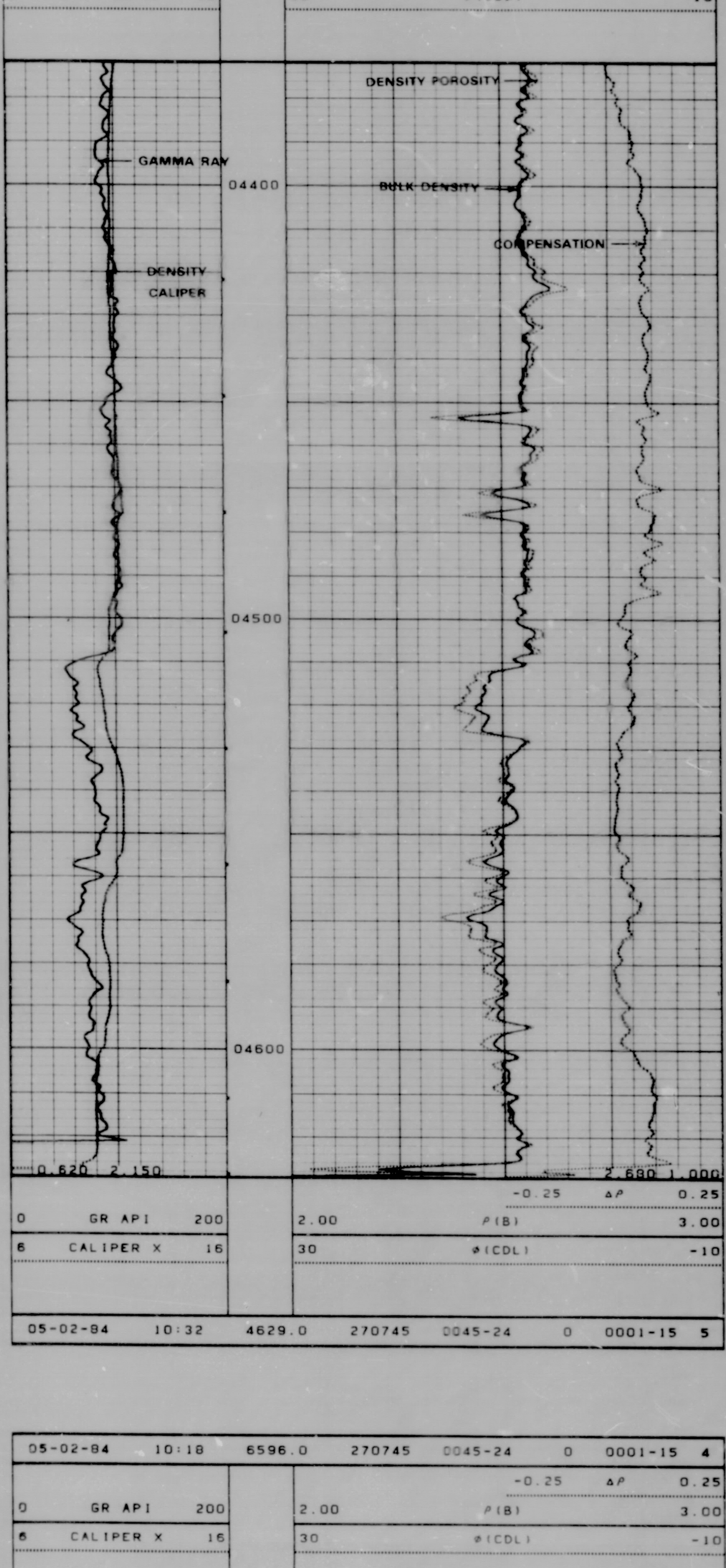
COMPANY: FARMOL INC. WILL: TRIPLE L FARMS #1 FIELD: WALTENBERG COUNTY: WELD STATE: COLORADO

LOG NO: 8 990 FWL 990 FSL 4N 67W

DATE: 05-02-84 TIME: 10:39

LOGGERS: J. L. 7701, J. L. 7701, J. L. 7701

LOGGING DATA: Run No. 1, Gamma Ray 366.6, Density 2.600, Porosity 11.84, Bulk Density 2.57, Compensation 425.1, Density Porosity 2.590, Bulk Density 2.590



COMPENSATED DENSITY AFTER SURVEY TOOL CHECK			
DENSITY DETECTOR		FIELD CHECK	
		BEFORE	AFTER
LS DETECTOR	257.9	257.8	CPS
SS DETECTOR	425.1	425.9	CPS
BULK DENSITY	2.588	2.590	G/CC
DENSITY CORR	0.000	0.001	G/CC

COMPENSATED DENSITY BEFORE SURVEY TOOL CHECK

DENSITY DETECTOR

	FIELD CHECK	UNITS
LS DETECTOR	257.9	CPS
SS DETECTOR	425.1	CPS
BULK DENSITY	2.588	G/CC
DENSITY CORR	0.000	G/CC

NEUTRON

CALIBRATOR	UNITS	STANDARD	UNITS
0	CPS	500.0	NAPI

CPS/API = 0.00

GAMMA RAY

BACKGROUND	CALIBRATOR	STANDARD	UNITS
366.6	958.6	120.0	GAPI

DELTA COUNTS PER SEC: 592.0

CPS/API = 4.933

CALIPER

	MEASURED		UNITS	CALIBRATED		UNITS
	SMALL	LARGE		SMALL	LARGE	
CALX	3558	7119	MV	7.00	14.00	IN

COMPENSATED DENSITY SHOP CALIBRATION

DATE PERFORMED: 04-13-84

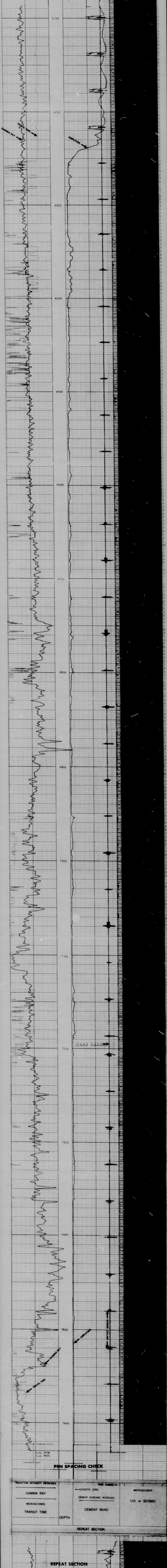
DENSITY DETECTOR

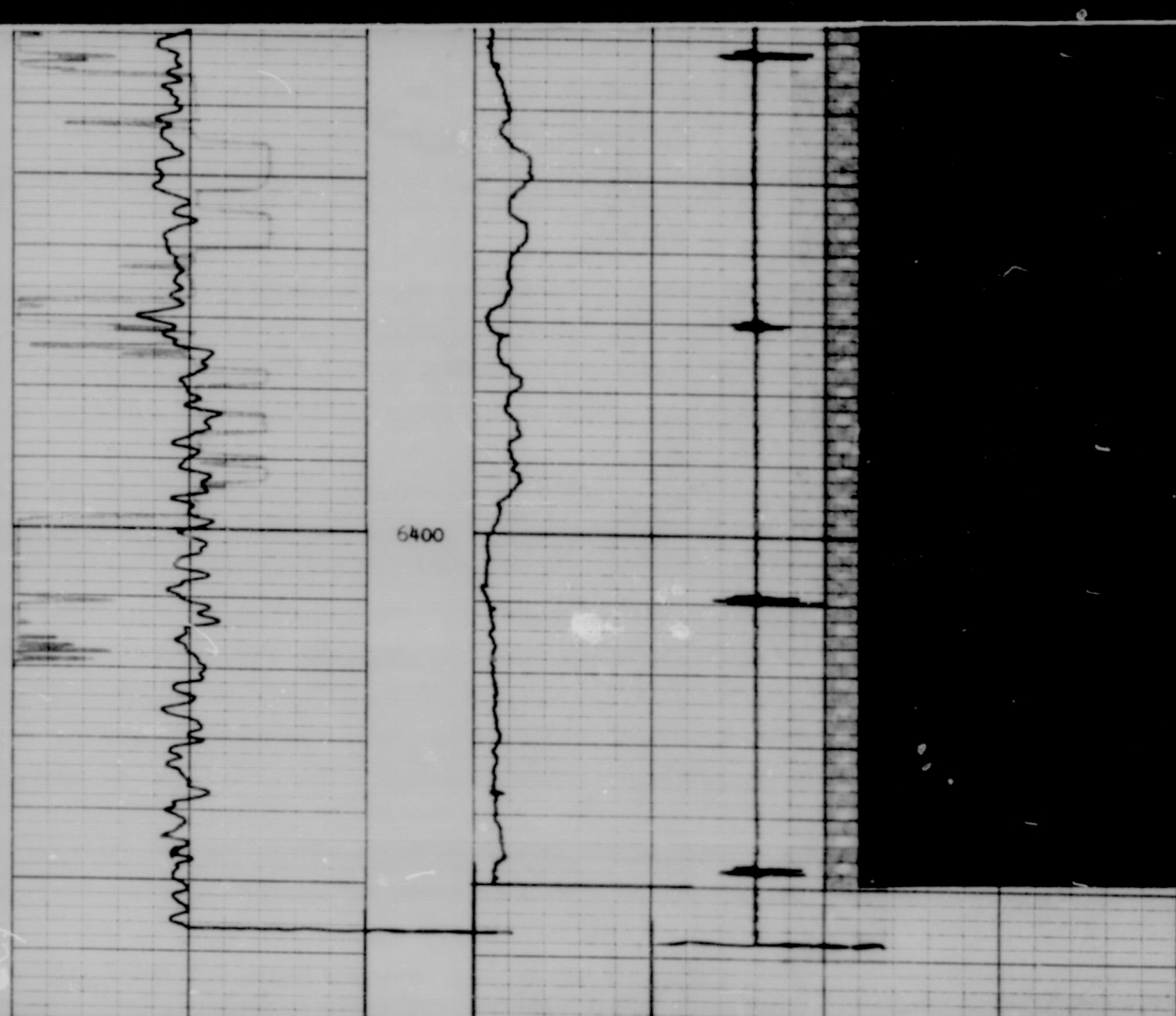
	MAG BLK(CPS)	ALUM BLK(CPS)	SPINE ANGLE	DEN/SPINE RATIO
LS DETECTOR	1118.4	257.0	75	0.579
SS DETECTOR	620.2	425.0		

[illegible][illegible]

CEMENT BOND	VDL
CEMENT BONDING INCREASES	MIC
STIC ZERO	

FREE CASING ← 100





REPEAT SECTION

Company PARMOIL INCORPORATED
 Well TRIPLE L FARMS NO. 1
 Field WATTENBERG
 County WELD
 State COLORADO

Drillers T.D. 7701
 Log R.D. 7634
 Log T.D. 7640
 Elevations:
 K.B. 4838 D.F. 4837 G.L. 4823

CALIBRATION BEFORE SURVEY

← TRAVEL TIME 400 μ Sec

← AMPLITUDE ZERO

TRAVEL TIME 200 μ Sec →

FREE PIPE SIGNAL →

CALIBRATION AFTER SURVEY

← TRAVEL TIME 400 μ Sec

← AMPLITUDE ZERO

TRAVEL TIME 200 μ Sec →

FREE PIPE SIGNAL →