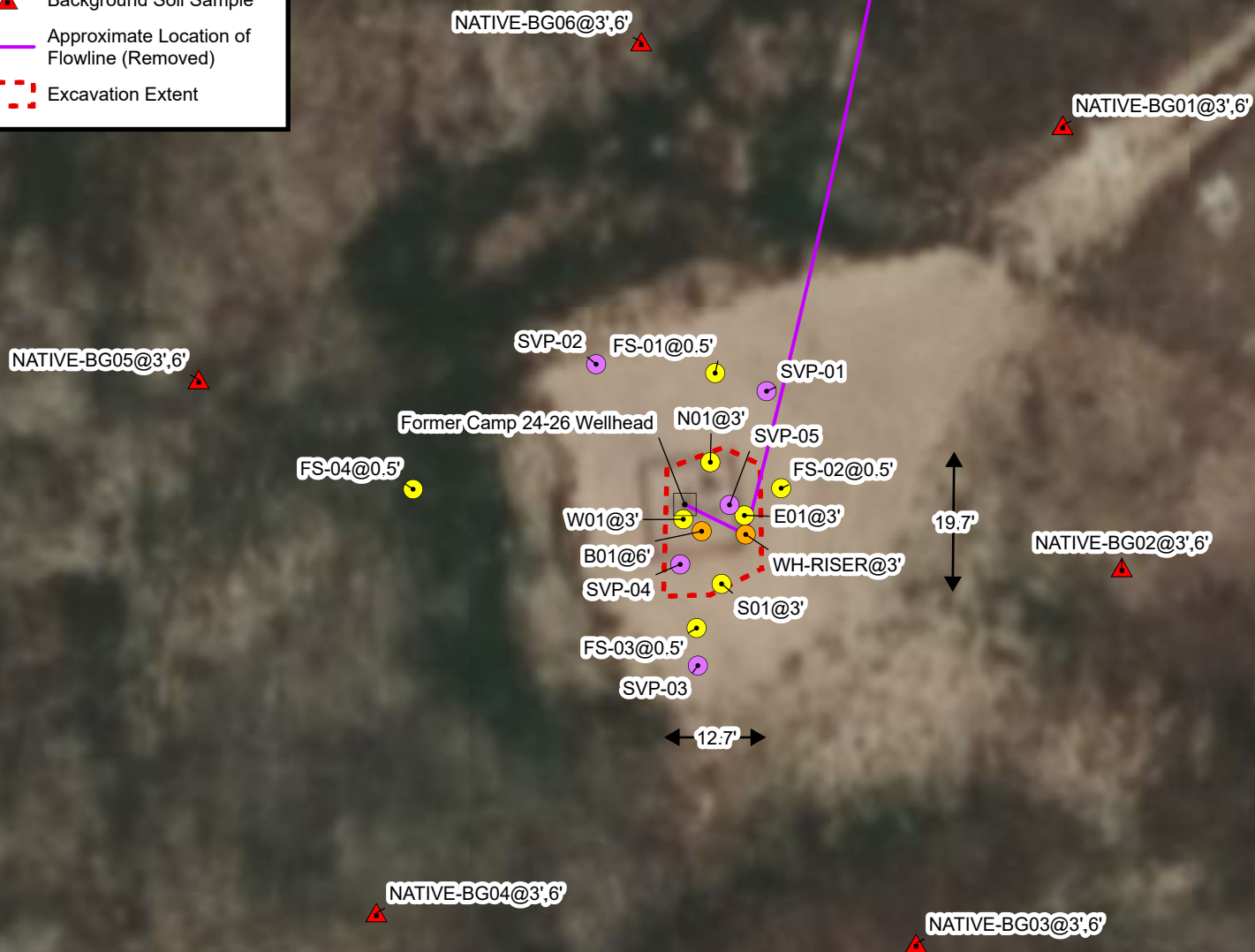


Legend

- P&A'd Wellhead
- Soil Sample
- Soil Screening
- Soil Vapor Point (SVP)
- Background Soil Sample
- Approximate Location of Flowline (Removed)
- Excavation Extent



Sources: Environmental Systems Research Institute (ESRI)



Wellhead Excavation Site Map

Camp 24-26 Wellhead
Kerr-McGee Oil & Gas Onshore, LP
SWNE SEC 26-T3N-R66W
Weld County, CO

Project Number: 09A1417881

FIGURE
1