

Interim Reclamation and Stormwater Inspection

October 30, 2024

Operator: GMT EXPLORATION COMPANY LLC #10243

Location ID: 479191

Inspection Document #: 697505559

Elbert County, CO

Chris Binschus
Reclamation Specialist, ECMC



COLORADO

**Energy & Carbon Management
Commission**

Department of Natural Resources

Inspection Photos
Location Name: Crystal-Ruby/Pad
Location ID: 479191



Photo 1. Photo taken along the southeastern perimeter of location, facing West. Photo illustrates preliminary weed control- mowing has only been performed along the perimeter fenceline.



Photo 2. Photo taken along the southwestern perimeter of location, facing Southeast. Photo illustrates ditch BMPs are not properly functioning and have accumulation of sediment.



Inspection Photos
Location Name: Crystal-Ruby/Pad
Location ID: 479191



Photo 3. Photo taken along the southwestern perimeter of location, facing West. Photo illustrates repairs have been performed on rill erosion observed on the cut slope.

Ditch BMPs are not properly functioning and have accumulation of sediment.



Photo 4. Photo taken from the western topsoil stockpile, facing North. Photo illustrates that weeds do not appear to have been mowed. Reseeding has not been performed but is planned.

Operator did request an extension for reseeding due to environmental conditions.

Inspection Photos
Location Name: Crystal-Ruby/Pad
Location ID: 479191



Photo 5. Photo taken along the northwestern perimeter of location, facing East. See comments under Photo 1.



Photo 6. Photo taken along the northern perimeter of location, facing North. See comments under Photo 1.

Inspection Photos
Location Name: Crystal-Ruby/Pad
Location ID: 479191



Photo 7. Photo taken from the northern topsoil stockpile, facing East. See comments under Photo 4.



Photo 8. Photo taken along the northeastern perimeter of location, facing South. Photo illustrates weedy, annual vegetation.



Inspection Photos
Location Name: Crystal-Ruby/Pad
Location ID: 479191



Photo 9. Photo taken along the eastern well pad. Photo illustrates either subsidence or the sound wall hole was never properly backfilled.



Photo 10. Photo taken of the eastern well pad, facing South. Photo illustrates stormwater repairs have been performed.

Inspection Photos
Location Name: Crystal-Ruby/Pad
Location ID: 479191



Photo 11. Photo taken from the production facility area. Photo illustrates wildlife netting that has not been properly installed.

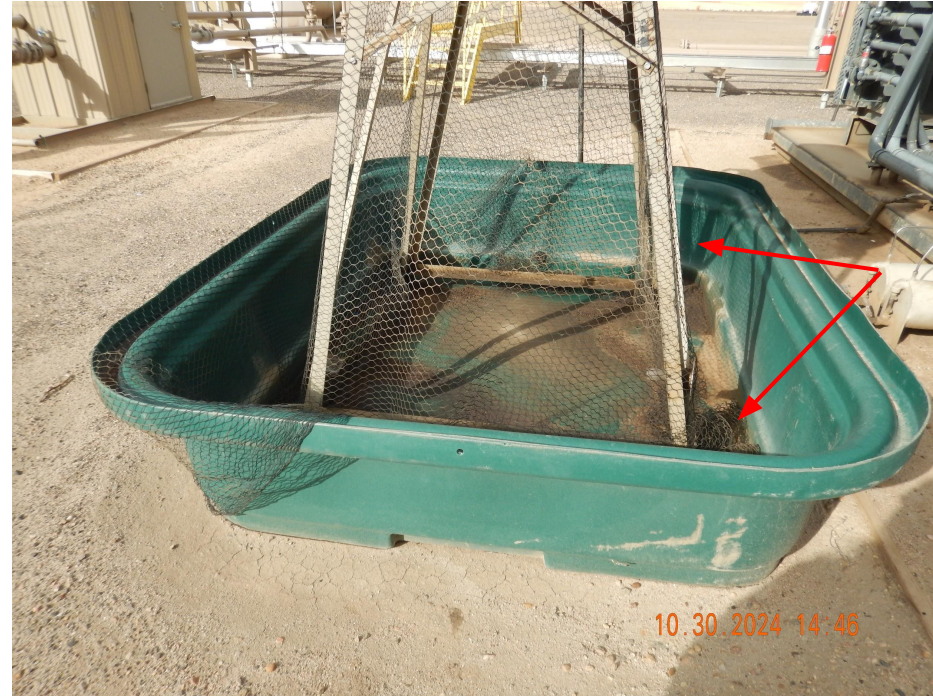


Photo 12. Photo taken from the production facility area. See comments under Photo 11.



Inspection Photos
Location Name: Crystal-Ruby/Pad
Location ID: 479191



Photo 13. Photo taken from the production facility area. Photo illustrates stained soil.



Photo 14. Photo taken from the production facility area. See comments under Photo 13.



Inspection Photos
Location Name: Crystal-Ruby/Pad
Location ID: 479191



Photo 15. Photo taken from the secondary containment area of the production facility area. Photo illustrates E&P waste that needs to be cleaned up.



Photo 16. Photo taken from the secondary containment area of the production facility area. See comments under Photo 15.

