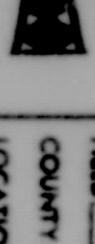
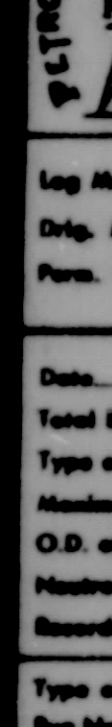


McCULLOUGH TOOL COMPANY

RADIATION LOG



 A4496 MOR	Location of Well	English Oil Parhandle Oil	ASSIGNED English Oil COMPANY Parhandle Oil WELL #1 Long ROAD #1 Long COUNTY #1 Long ROUTE #1 Long LOCATION NE NE SE 7-4N-87W
	COMPANY	English Oil	
	WELL	#1 Long	
	FIELD	Sage Creek Area (W)	
	COUNTY	Route Colorado	
	LOCATION	NE NE SE 7-4N-87W	
Log Head From	4' ab. G.L.	Bar	
Drp. Head From	K.B.	Bar	7251.8
Perm. Datum	G.L.	Bar	7247
Date	12-6-55	Truck No.	825
Total Depth (Driller)	3844	Bar. Trk. No.	692
Type of Fluid in Hole	Water	Effective Depth (Driller)	3775
Maximum Recorded Temp.		Fluid Level	Full
O.D. of Instrument - in.	3 1/2"	Length of Device - Overall	10 1/2"
Maximum Source		Instrument No.	
Recorded by	Rinerson	Witnessed by	Mr. Robert Minton
Type of Log	G/R		
Run No.	One		
Top of Logged Interval	0		
Bottom of Logged Interval	3774		
Time Constant	3S-97B.5-350Cts.		
Logging Speed Ft./Min.	28'		
Statistical Variation - in.			
Sensitivity - Micro-Röntgens	3.5		

CASING RECORD (Customers)				OPEN (BORE) HOLE RECORD	
Run No.	Size-In.	Wt. Lb.	Interval	Size-In.	Interval
1	7"	234	0	3822	

REMARKS OR OTHER DATA
Trk. Oper.-----Hacking
Log Ticket No.-----44558

RADIATION INCREASE

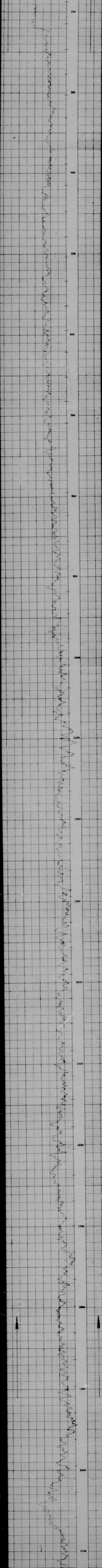
RADIATION INCREASE

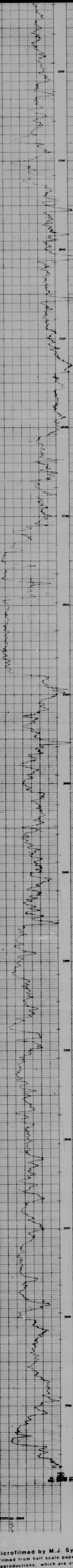
GAMMA RAY CURVE

MICRO-ROENTGENS/HR.

7.0 10.5 14.0 17.5

CASING AND COLLAR LOG





STATISTICAL CHECK