

SCHLUMBERGER WELL SURVEYING CORPORATION

Location of Well



MICROLOGGING

CO English Oil:
Panhandle Oil
WELL #1 Long
FIELD Sage Creek Area (W)
LOC NE NE SE
7-4N-87W
CO Routt
STATE Colorado

CO ROUTE A449M
FIELD NE NE SE
LOC 7-4N-87W
WELL #1 Long
CO English Oil: Panhandle
Oil

RUN No. One
Date 11-23-55
First Reading 3841
Last Reading 1000
Feet Measured 2841
Depth Reached 3844
Bottom Driller 3844
Depth Datum KB
Mud Net. Gel
Dens. Visc. 9.2 61
Mud Resist. 4.2 64
" Res. BHT 2.5 107
" pH 8.0 72
" Wtr. Loss 60
Rmt @ BHT 2.4 -C
Rmc @ BHT 2.4 -C
Mud Log: Rm 2.4
Limit Upper
Depth 3700
Bit Size 9"
Sonde Type WRS-T
Pod Type H
Opr. Rig Time 3 Hrs.
Truck No. 2739 R.S.
Recorded by Kudrie
Witness Minton
REMARKS Mud sample from pit.
Lost circulation material in hole.

SPONTANEOUS POTENTIAL
millivolts

RESISTIVITY
ohms. m/m

DEPTH

0

1000

2000

3000

4000

5000

6000

7000

8000

9000

10000

11000

12000

13000

14000

15000

16000

17000

18000

19000

20000

21000

22000

23000

24000

25000

26000

27000

28000

29000

30000

31000

32000

33000

34000

35000

36000

37000

38000

39000

40000

41000

42000

43000

44000

45000

46000

47000

48000

49000

50000

51000

52000

53000

54000

55000

56000

57000

58000

59000

60000

61000

62000

63000

64000

65000

66000

67000

68000

69000

70000

71000

72000

73000

74000

75000

76000

77000

78000

79000

80000

81000

82000

83000

84000

85000

86000

87000

88000

89000

90000

91000

92000

93000

94000

95000

96000

97000

98000

99000

100000

101000

102000

103000

104000

105000

106000

107000

108000

109000

110000

111000

112000

113000

114000

115000

116000

117000

118000

119000

120000

121000

122000

123000

124000

125000

126000

127000

128000

129000

130000

131000

132000

133000

134000

135000

136000

137000

138000

139000

140000

141000

142000

143000

144000

145000

146000

147000

148000

149000

150000

151000

152000

153000

154000

155000

156000

157000

158000

159000

160000

161000

162000

163000

164000

165000

166000

167000

168000

169000

170000

171000

172000

173000

174000

175000

176000

177000

178000

179000

180000

181000

182000

183000

184000

185000

186000

187000

188000

189000

190000

191000

192000

193000

194000

195000

196000

197000

198000

199000

200000

201000

202000

203000

204000

205000

206000

207000

208000

209000

210000

211000

212000

213000

214000

215000

216000

217000

218000

219000

220000

221000

222000

223000

224000

225000

226000

227000

228000

229000

230000

231000

232000

233000

234000

235000

236000

237000

238000

239000

240000

241000

242000

243000

244000

245000

246000

247000

248000

249000

250000

251000

252000

253000

254000

255000

256000

257000

258000

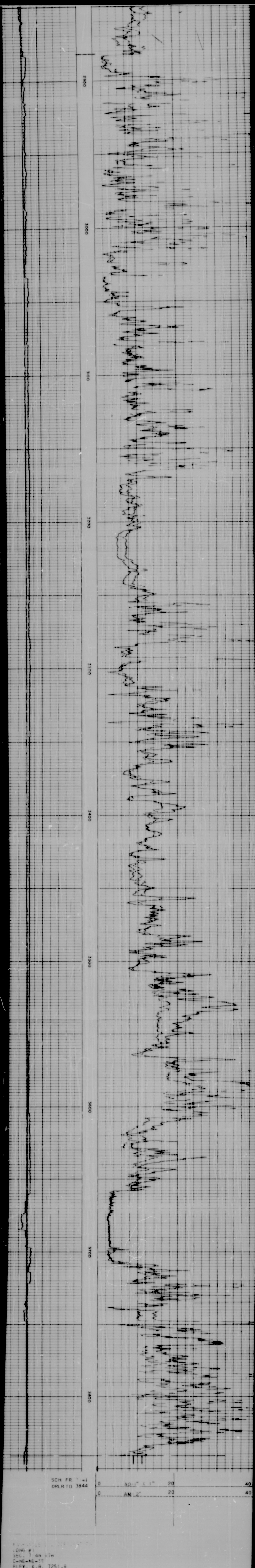
259000

260000

261000

262000

263000



SCH FR 7-41
DRLR TD 3844

0 10 20 40
0 20 40

WILDCAT
ROUTY COUNTY
COLORADO

Microfilmed by M.J. Systems
Filmed from half scale paper print
reproductions, which are available
through Petroleum Information, Inc.

A subsidiary of A.C. Nielson Company