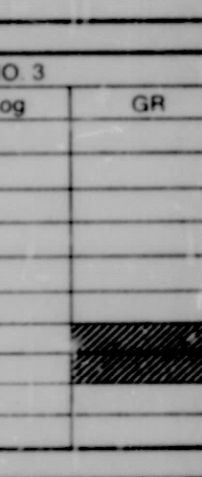




COMPENSATED  
Densilog  
Neutron  
Gamma Ray



COMPANY  
WELL  
FIELD  
COUNTY  
STATE

HAMILTON BROTHERS OIL CO.  
HAMILTON PRATT #1-30  
BAVIER LAKE  
WELD  
COLORADO

DATE  
TIME  
WELL NO.  
WELL NAME

6/1/58  
11:30  
1-30  
BAVIER LAKE

RECEIVED

JUN 1 1958

REMARKS

OLD HERE

REMARKS

REMARKS

REMARKS

REMARKS

REMARKS

REMARKS

REMARKS

REMARKS

REMARKS

REMARKS

REMARKS

REMARKS

REMARKS

REMARKS

REMARKS

REMARKS

REMARKS

REMARKS

REMARKS

REMARKS

REMARKS

REMARKS

REMARKS

REMARKS

REMARKS

REMARKS

REMARKS

REMARKS

REMARKS

REMARKS

REMARKS

REMARKS

REMARKS

REMARKS

REMARKS

REMARKS

REMARKS

REMARKS

REMARKS

REMARKS

REMARKS

REMARKS

REMARKS

REMARKS

REMARKS

REMARKS

REMARKS

REMARKS

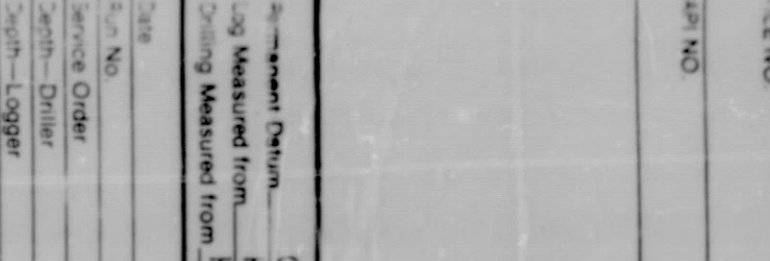
REMARKS

REMARKS

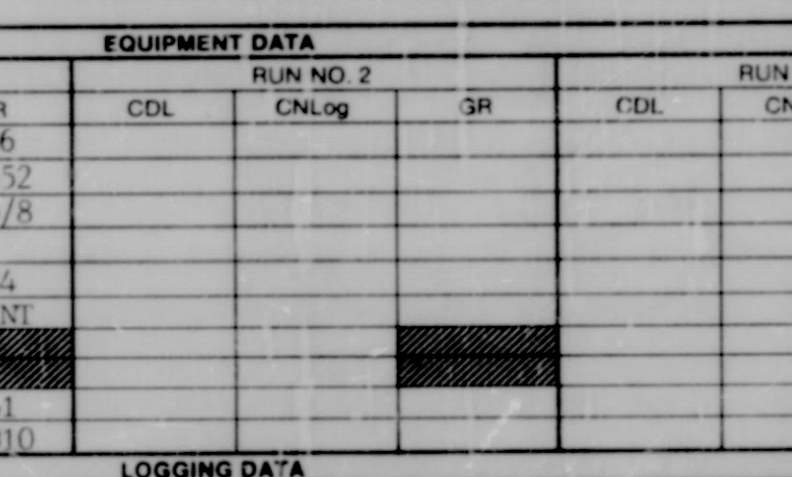
REMARKS

REMARKS

REMARKS



COMPENSATED  
Densilog  
Neutron  
Gamma Ray



COMPANY  
WELL  
FIELD  
COUNTY  
STATE

HAMILTON BROTHERS OIL CO.  
HAMILTON PRATT #1-30  
BAVIER LAKE  
WELD  
COLORADO

DATE  
TIME  
WELL NO.  
WELL NAME

6/1/58  
11:30  
1-30  
BAVIER LAKE

RECEIVED

JUN 1 1958

REMARKS

OLD HERE

REMARKS

REMARKS

REMARKS

REMARKS

REMARKS

REMARKS

REMARKS

REMARKS

REMARKS

REMARKS

REMARKS

REMARKS

REMARKS

REMARKS

REMARKS

REMARKS

REMARKS

REMARKS

REMARKS

REMARKS

REMARKS

REMARKS

REMARKS

REMARKS

REMARKS

REMARKS

REMARKS

REMARKS

REMARKS

REMARKS

REMARKS

REMARKS

REMARKS

REMARKS

REMARKS

REMARKS

REMARKS

REMARKS

REMARKS

REMARKS

REMARKS

REMARKS

REMARKS

REMARKS

REMARKS

REMARKS

REMARKS

REMARKS

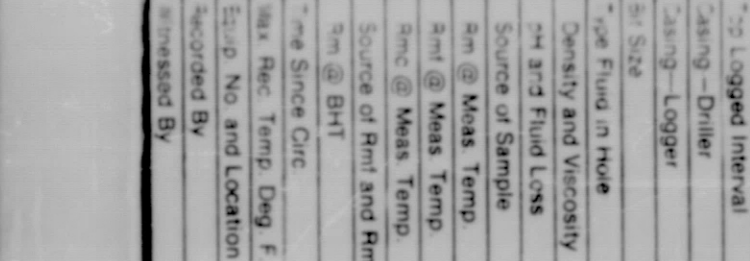
REMARKS

REMARKS

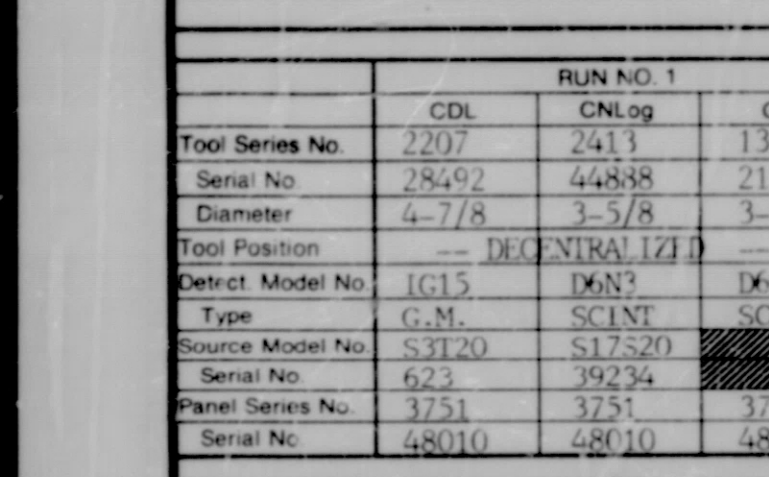
REMARKS

REMARKS

REMARKS



COMPENSATED  
Densilog  
Neutron  
Gamma Ray



COMPANY  
WELL  
FIELD  
COUNTY  
STATE

HAMILTON BROTHERS OIL CO.  
HAMILTON PRATT #1-30  
BAVIER LAKE  
WELD  
COLORADO

DATE  
TIME  
WELL NO.  
WELL NAME

6/1/58  
11:30  
1-30  
BAVIER LAKE

RECEIVED

JUN 1 1958

REMARKS

OLD HERE

REMARKS

REMARKS

REMARKS

REMARKS

REMARKS

REMARKS

REMARKS

REMARKS

REMARKS

REMARKS

REMARKS

REMARKS

REMARKS

REMARKS

REMARKS

REMARKS

REMARKS

REMARKS

REMARKS

REMARKS

REMARKS

REMARKS

REMARKS

REMARKS

REMARKS

REMARKS

REMARKS

REMARKS

REMARKS

REMARKS

REMARKS

REMARKS

REMARKS

REMARKS

REMARKS

REMARKS

REMARKS

REMARKS

REMARKS

REMARKS

REMARKS

REMARKS

REMARKS

REMARKS

REMARKS

REMARKS

REMARKS

REMARKS

REMARKS

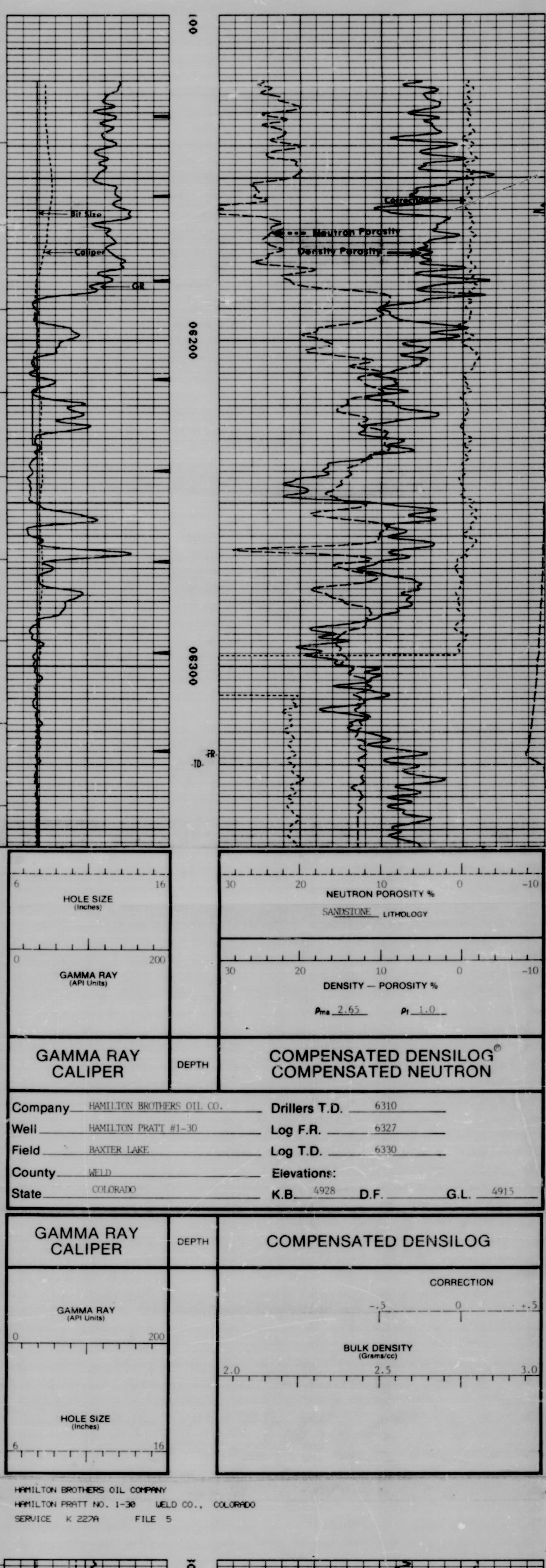
REMARKS

REMARKS

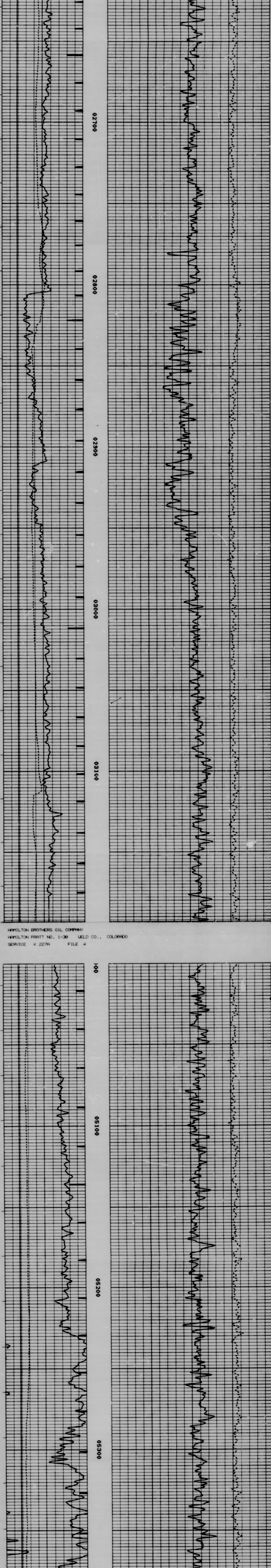
REMARKS

REMARKS

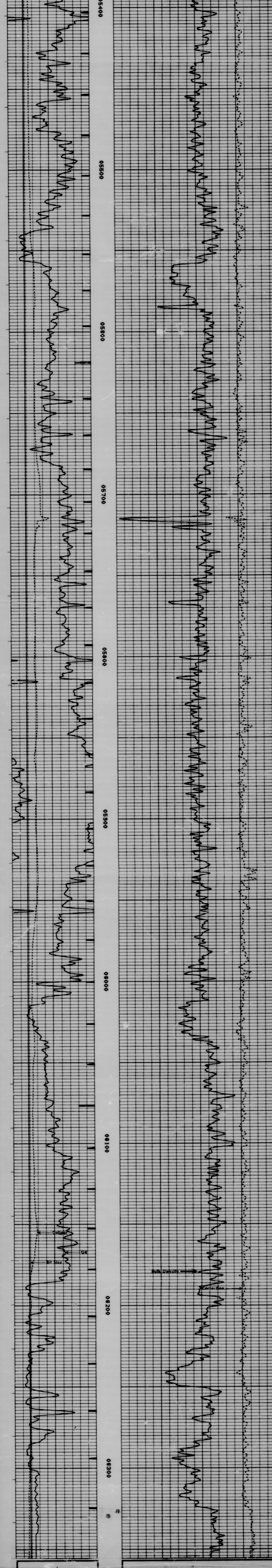




HAMILTON BROTHERS OIL COMPANY  
HAMILTON PRATT NO. 1-30 WELD CO., COLORADO  
SERVICE K 227H FILE 5



HAMILTON BROTHERS OIL COMPANY  
HAMILTON PRATT NO. 1-30 WELD CO., COLORADO  
SERVICE K 227H FILE 4



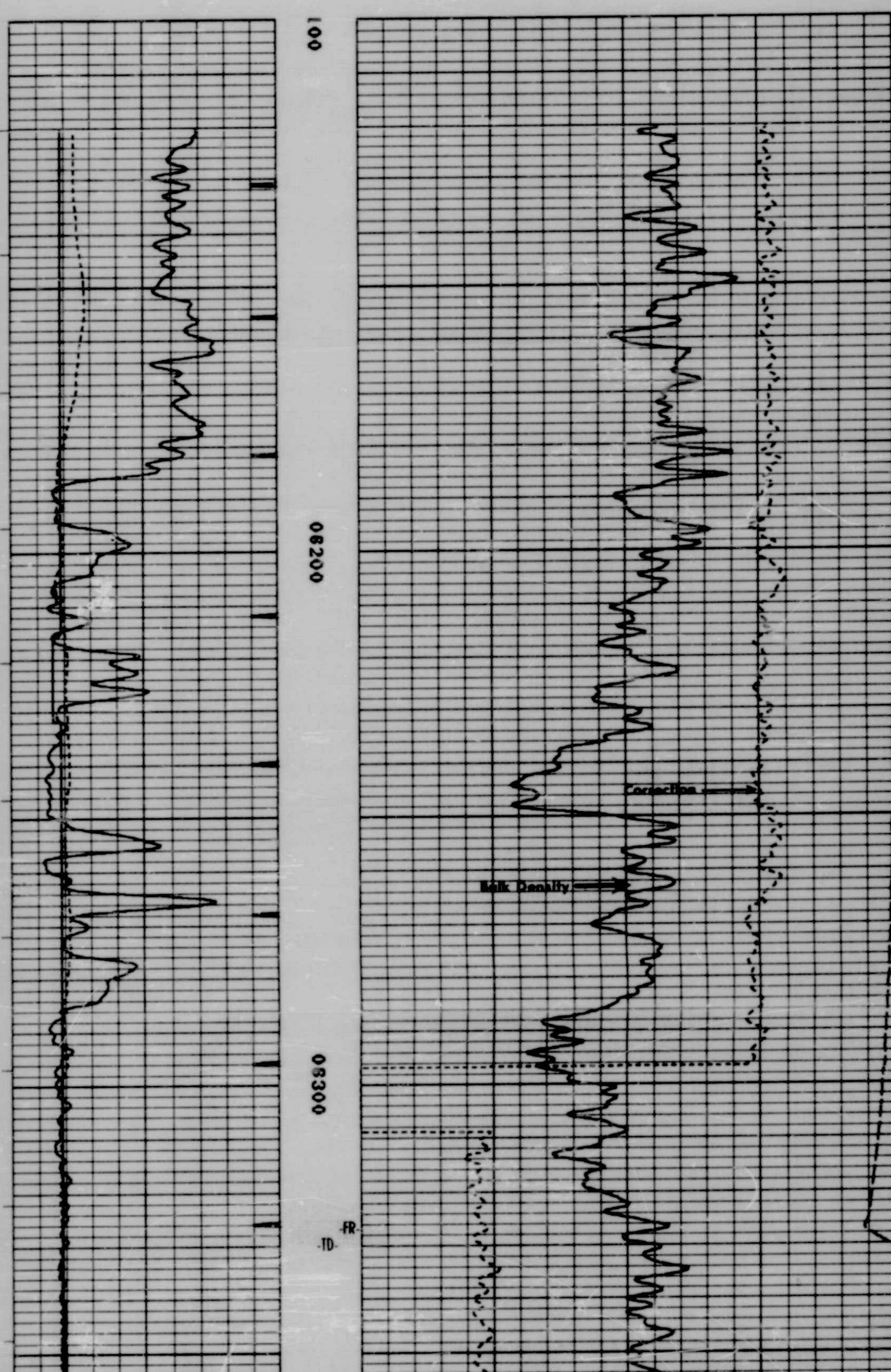
HAMILTON BROTHERS OIL COMPANY  
HAMILTON PRATT NO. 1-30 WELD CO., COLORADO  
SERVICE K 227H FILE 4



HOLE SIZE (Inches) <div style="text-align: center;">6                      16</div>	BULK DENSITY (Grams/cc) <div style="text-align: center;">2.0                      2.5                      3.0</div>	GAMMA RAY (API Units) <div style="text-align: center;">0                      200</div>	CORRECTION <div style="text-align: center;">-0.5                      0                      +0.5</div>
<b>GAMMA RAY CALIPER</b>	<b>DEPTH</b>	<b>COMPENSATED DENSIOLOG</b>	
Company <u>HAMILTON BROTHERS OIL CO.</u>		Drillers T.D. <u>6310</u>	
Well <u>HAMILTON PRATT #1-30</u>		Log F.R. <u>6327</u>	
Field <u>BAXTER LAKE</u>		Log T.D. <u>6330</u>	
County <u>WELD</u>		Elevations:	
State <u>COLORADO</u>		K.B. <u>4928</u>	D.F. <u>      </u> G.L. <u>4915</u>

HAMILTON BROTHERS OIL COMPANY  
 HAMILTON PRATT NO. 1-30 WELD CO., COLORADO  
 SERVICE K 227A FILE 3

REPEAT SECTION



BEFORE LOG CALIBRATION SUMMARY

CURVE	MILLIVOLTS		COUNTS/SEC.		SCALING FACTORS		RATIO
	LOW	HIGH	LOW	HIGH	ADD.	MULT.	
LSD		MG		407.	0.0	1.000	
SSD		MG		451.	0.0	1.000	
LSD		AL		135.	0.0	1.000	3.010
SSD		AL		309.	0.0	1.000	1.459
LSD		MGRV		375.	0.0	1.000	
SSD		MGRV		487.	0.0	1.000	
CAL	3252.0	6569.1			0.1	0.014	
LSN				154.	0.0	1.000	0.086
SSN				223.	0.0	1.000	
GR	1487.8	4549.0			0.0	0.147	

NORMALIZED CALIBRATION SUMMARY

CURVE	MILLIVOLTS		COUNTS/SEC.		SCALING FACTORS		RATIO
	LOW	HIGH	LOW	HIGH	ADD.	MULT.	
LSD		MG		407.	0.0	1.000	
SSD		MG		451.	0.0	1.000	
LSD		AL		135.	0.0	1.000	3.010
SSD		AL		309.	0.0	1.000	1.459
LSD		MGRV		375.	0.0	1.000	
SSD		MGRV		487.	0.0	1.000	
CAL	3252.0	6569.1			0.2	0.014	
LSN				154.	0.0	1.000	0.086
SSN				223.	0.0	1.000	
GR	1487.8	4549.0			0.0	0.147	

AFTER LOG CALIBRATION SUMMARY

CURVE	MILLIVOLTS		COUNTS/SEC.		SCALING FACTORS		RATIO
	LOW	HIGH	LOW	HIGH	ADD.	MULT.	
LSD		MG		406.	0.0	1.000	
SSD		MG		451.	0.0	1.000	
LSD		AL		135.	0.0	1.000	3.005
SSD		AL		309.	0.0	1.000	1.460
LSD		MGRV		374.	0.0	1.000	
SSD		MGRV		489.	0.0	1.000	
CAL	3252.0	6569.1			0.2	0.014	
LSN				154.	0.0	1.000	0.086
SSN				223.	0.0	1.000	
GR	1487.8	4549.0			0.0	0.147	



Division of Dresser Industries, Inc.