

## Inspection Photos

Location Name: TEP ROCKY MOUNTAIN LLC State of Colorado KP 32-9 Pad

Location ID: 435118



Photo # 7252 From entrance to location

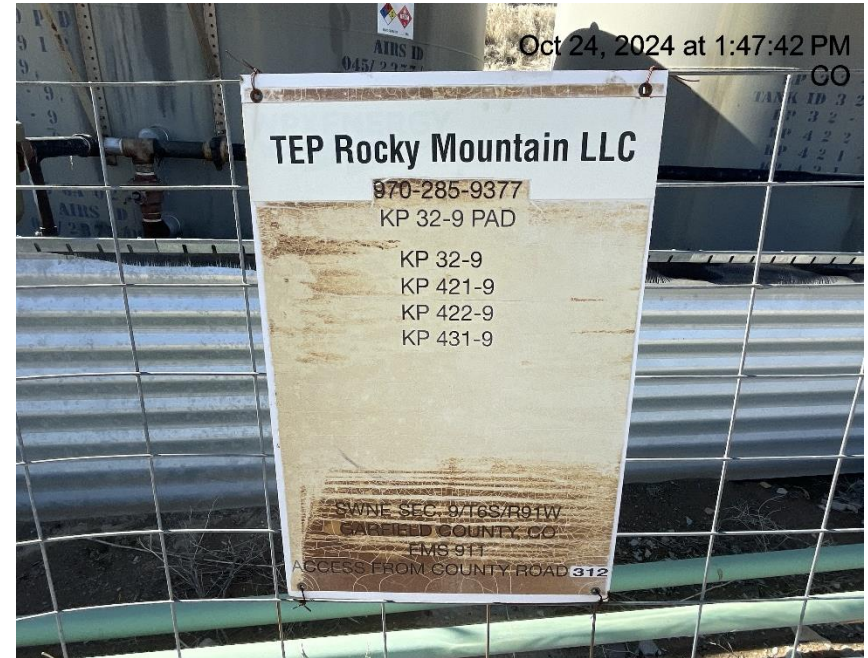


Photo # 7253 Location



## Inspection Photos

Location Name: TEP ROCKY MOUNTAIN LLC State of Colorado KP 32-9 Pad

Location ID: 435118



Photo # 7254 Location



Photo # 7255 Location



## Inspection Photos

Location Name: TEP ROCKY MOUNTAIN LLC State of Colorado KP 32-9 Pad

Location ID: 435118

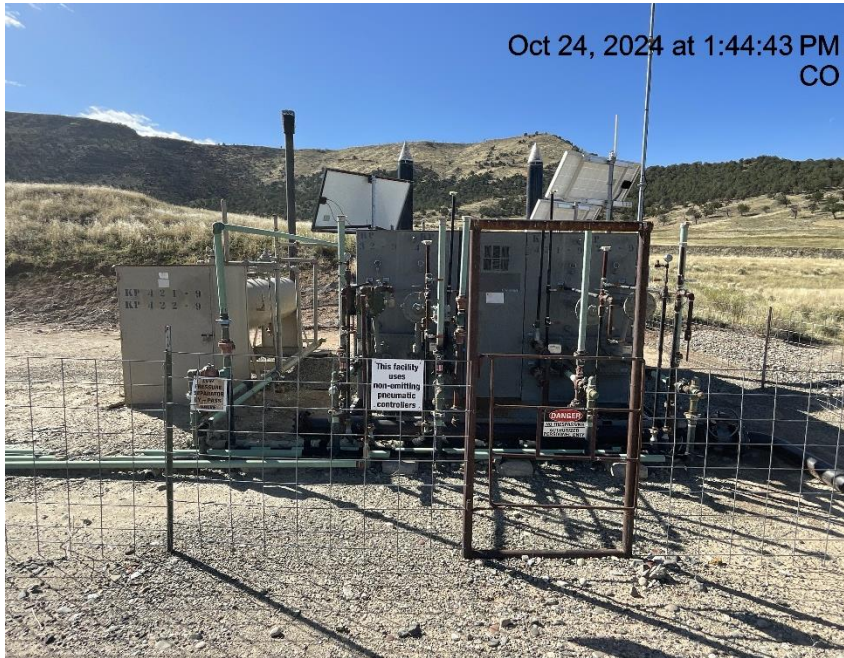


Photo # 7256 Location



Photo # 7257 Location



## Inspection Photos

Location Name: TEP ROCKY MOUNTAIN LLC State of Colorado KP 32-9 Pad

Location ID: 435118



Oct 24, 2024 at 1:40:40 PM  
CO

Photo # 7258 Location



Oct 24, 2024 at 1:42:08 PM  
CO

Photo # 7259 Location



## Inspection Photos

Location Name: TEP ROCKY MOUNTAIN LLC State of Colorado KP 32-9 Pad

Location ID: 435118



Photo # 7260 Dead weeds/debris

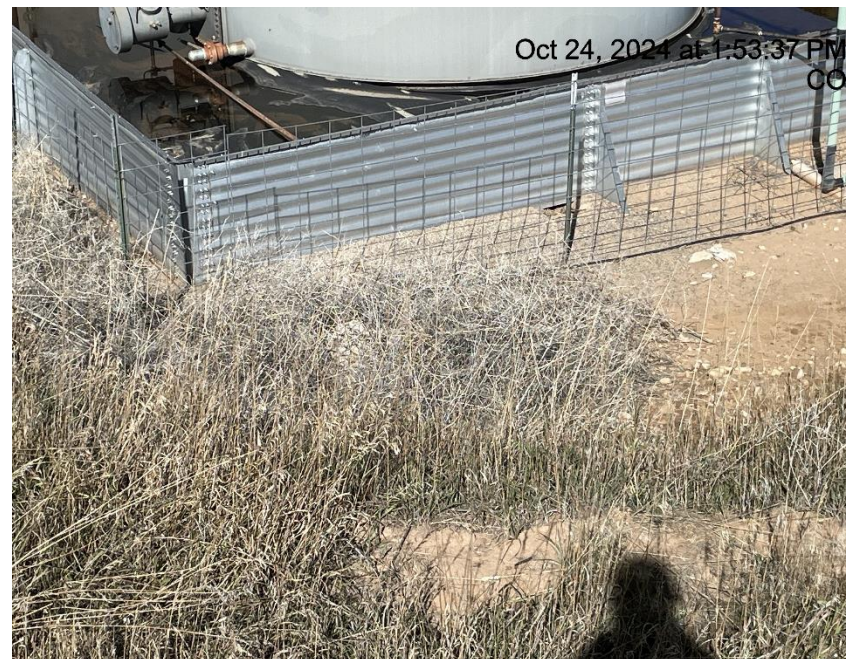


Photo # 7261 Dead weeds/debris



## Inspection Photos

Location Name: TEP ROCKY MOUNTAIN LLC State of Colorado KP 32-9 Pad

Location ID: 435118



**Photo # 7262 PRV vent line on tank heater does not comply with CECMC pressure safety device rules**



**Photo # 7263 PRV vent line on tank heater does not comply with CECMC pressure safety device rules**

## Inspection Photos

Location Name: TEP ROCKY MOUNTAIN LLC State of Colorado KP 32-9 Pad

Location ID: 435118



Photo # 7264 PRV vent line on tank heater does not comply with CECMC pressure safety device rules



Photo # 7265 Tank capacity on label illegible/does not comply with CECMC tank labeling rules



## Inspection Photos

Location Name: TEP ROCKY MOUNTAIN LLC State of Colorado KP 32-9 Pad

Location ID: 435118

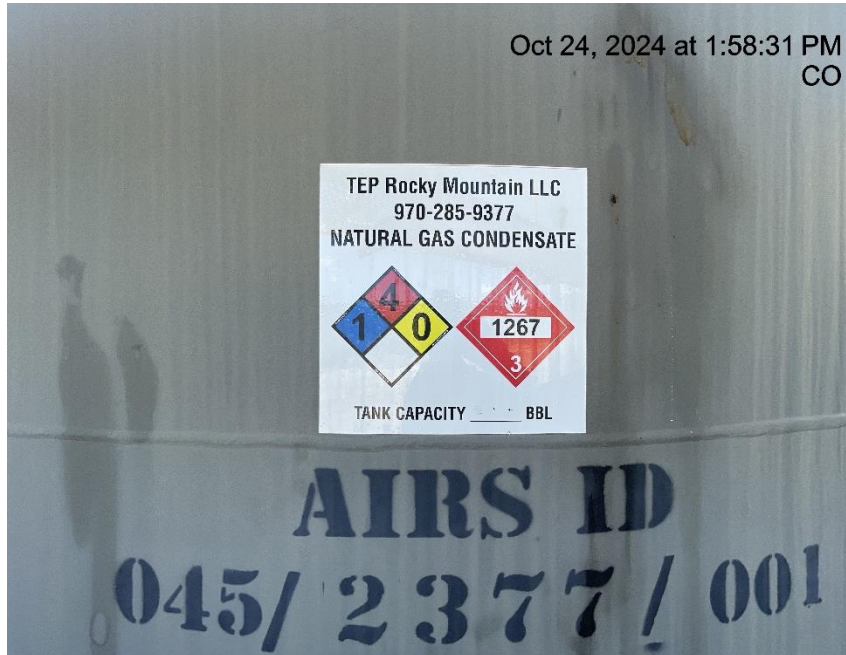


Photo # 7266 Tank capacity on label illegible/does not comply with CECMC tank labeling rules

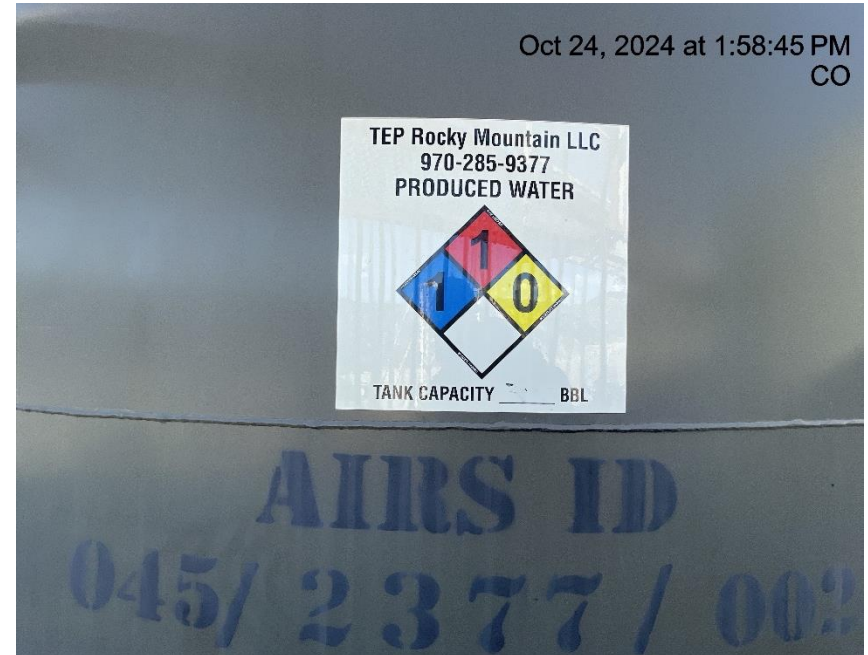


Photo # 7267 Tank capacity on label illegible/does not comply with CECMC tank labeling rules



## Inspection Photos

Location Name: TEP ROCKY MOUNTAIN LLC State of Colorado KP 32-9 Pad

Location ID: 435118



Photo # 7268 Tank capacity on label illegible/does not comply with CECMC tank labeling rules



Photo # 7269 Dead weeds/debris