

Inspection Photos

Location Name: TEP ROCKY MOUNTAIN LLC SNYDER A Pad

Location ID: 311651



Oct 29, 2024 at 11:21:21 AM
CO

Photo # 7978 From entrance to location



Oct 29, 2024 at 11:21:27 AM
CO

Photo # 7979 From entrance to location

Inspection Photos

Location Name: TEP ROCKY MOUNTAIN LLC SNYDER A Pad

Location ID: 311651



Photo # 7980 Location



Photo # 7981 Location

Inspection Photos

Location Name: TEP ROCKY MOUNTAIN LLC SNYDER A Pad

Location ID: 311651



Photo # 7982 Location



Photo # 7983 Location

Inspection Photos

Location Name: TEP ROCKY MOUNTAIN LLC SNYDER A Pad

Location ID: 311651



Photo # 7984 Location



Photo # 7985 Location

Inspection Photos

Location Name: TEP ROCKY MOUNTAIN LLC SNYDER A Pad

Location ID: 311651



Photo # 7986 Possible wellhead leak/gas bubbling up near wellhead through water in cellar (A11 well)

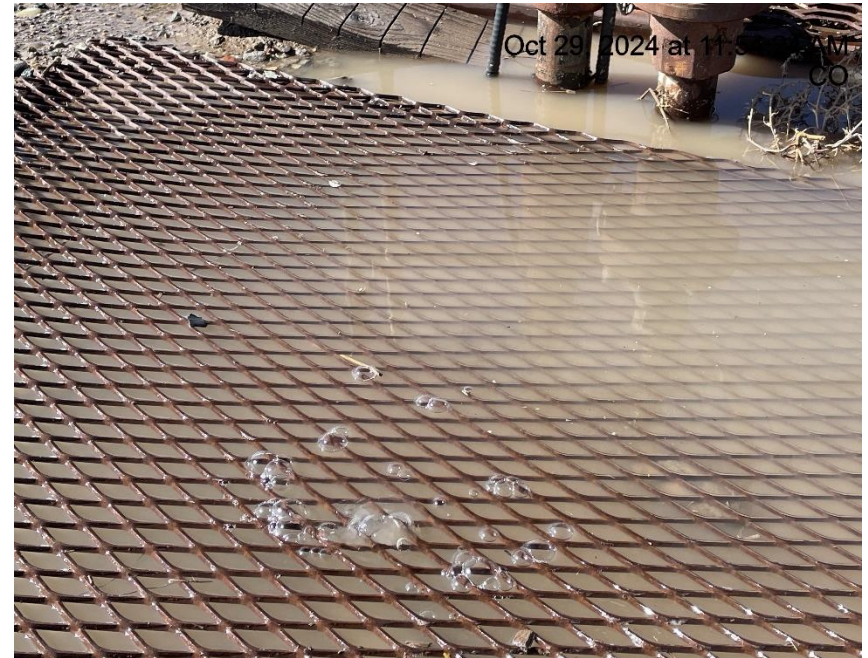


Photo # 7987 Possible wellhead leak/gas bubbling up near wellhead through water in cellar (A11 well)

Inspection Photos

Location Name: TEP ROCKY MOUNTAIN LLC SNYDER A Pad

Location ID: 311651



Photo # 7988 Possible wellhead leak/gas bubbling up near wellhead through water in cellar (A9 well)



Photo # 7989 Possible wellhead leak/gas bubbling up near wellhead through water in cellar (A9 well)

Inspection Photos

Location Name: TEP ROCKY MOUNTAIN LLC SNYDER A Pad

Location ID: 311651



Photo # 7990 Possible wellhead leak/gas bubbling up near wellhead through water in cellar (A9 well)

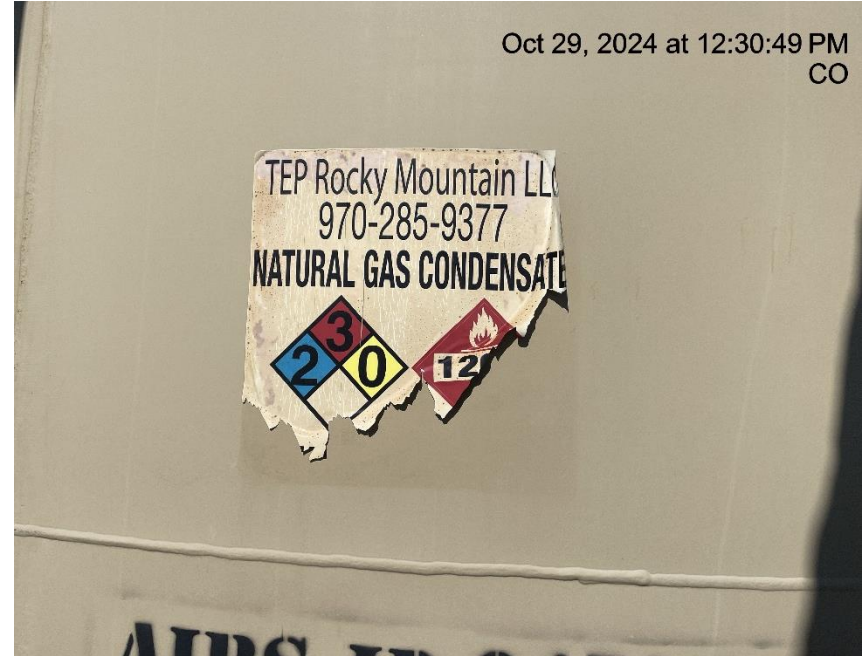


Photo # 7991 Tank label damaged