

Wellhead Closure Checklist

COGCC Rule 911.a.(4) Environmental Site Closure Assessment Field Form

Additional attachments (optional):	Pit Closure	Tank Battery Closure	Flowline Closure	Partially Buried Vault Closure
------------------------------------	-------------	----------------------	------------------	--------------------------------

Site Name & COGCC Facility Number: BAKER STATE B # 36-12		Date: 8-30-22	Remediation Project #: 20770
Associated Wells: 05-123-17430	Age of Site: YEARS		Number of Photos Attached: 1
Location: (GPS coordinates of wellhead or southeastern most wellhead for multiple) 40.354080, -104.504900			Estimated Facility Size (acres):

General Condition of Site: (General observations regarding housekeeping, corrosion, waste management, etc.)

GOOD

USCS Soil Type: SW	Estimated Depth to Groundwater: > 20'
---------------------------	---

Hydrocarbon Impacted Soils / Spills: (Note estimated size and if impact appears to be surficial or extends to an unknown depth)

SLIGHT HYDROCARBON ODOOR OBSERVED IN EXCAVATION.

Salt Crusted Soils or Impacted Vegetation: (Note estimated size and if impact appears to be surficial or extends to an unknown depth)

NONE OBSERVED

Wellhead(s)						
Well API	05-123-17430					
Age	YEARS					
Condition of surface around wellhead	GOOD - PER CREW					
PID Readings	N/A - EXCAVATED UPON ARRIVAL					
Condition of subsurface (staining, seepage)	HYDROCARBON ODOOR OBSERVED.					
PID Readings	0.1	42.5	83.5	18.9	24.4	
Sample taken? Location/Sample ID	WH-SS-01	WH-SS-02	WH-SS-03	WH-SS-04	WH-SS-01	
Photo Number(s)	SEE PHOTOLOG					

Other observations regarding wellheads:

WELL CASING CUT/CAPPED FOLLOWING ASSESSMENT.

Summary

Was impacted soil identified?		Yes - less than 10 cubic yards		Yes - more than 10 cubic yards	
No					
Total number of samples field screened: 5			Total number of samples collected: 5		
Highest PID Reading: 42.5			Total number of samples submitted to lab for analysis: 5		
If more than 10 cubic yards of impacted soil were observed:					
Vertical extent:			Estimated spill volume:		
N/A					
Lateral extent:			Volume of soil removed:		
N/A					
Is additional investigation required?					
Was groundwater encountered during the investigation?					
No		Yes - not impacted or in contact with impacted soils		Yes - groundwater impacted and/or in contact with impacted soils	
Measured depth to groundwater:			Was remedial groundwater removal conducted? Yes No		
Date Groundwater was encountered:					
Shewn on groundwater? Yes No			Commencement date of removal:		
Free product observed? Yes No			Volume of groundwater removed prior to sampling:		
Total number of samples collected:			Volume of groundwater removed post sampling:		
Total number of samples submitted to lab for analysis:			Total Volume of groundwater removed:		



FIGURES

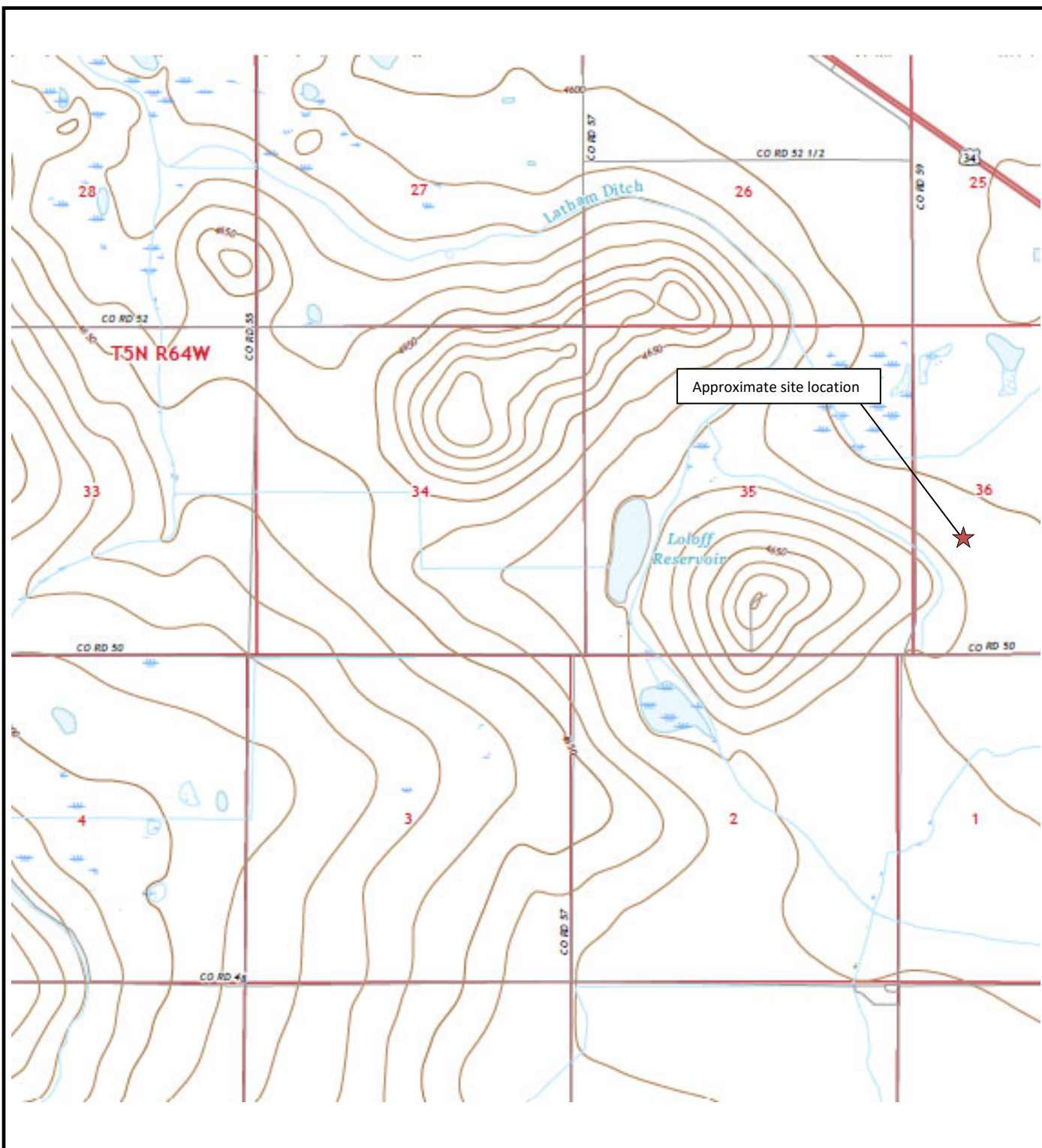
Figure 1: Topographic Site Location Map

Figure 2: Aerial Site Location Map

Figure 3: Soil Analytical Map

Figure 4: Polycyclic Aromatic Hydrocarbons Map

Figure 5: Metals in Soil Map

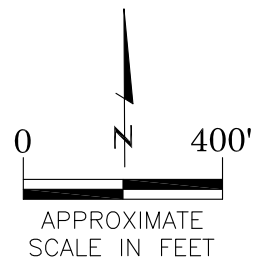


	<p>Topographic Site Location Map Baker State B #36-12 Closure Assessment 40.354080 / -104.504900 NW¼ SW¼ SEC.36 T5N R64W 6PM Weld County, Colorado API # 05-123-17430 Remediation # 20770</p>	<p>EAGLE ENVIRONMENTAL CONSULTING, INC.</p>
<p>Source: USGS 7.5 Minute Topographic Map, Valley View School, CO Quadrangle 2022</p>	<p>Figure 1</p>	



LEGEND

- FORMER BAKER STATE B #36-12 WELLHEAD (PLUGGED AND ABANDONED)
- ASSOCIATED SEPARATOR
- APPROXIMATE FLOWLINE LOCATION



AERIAL SITE LOCATION MAP
 BAKER STATE B #36-12
 CLOSURE ASSESSMENT
 40.354080 / -104.504900
 NW¼ SW¼ SEC.36 T5N R64W 6PM
 WELD COUNTY, COLORADO
 API # 05-123-17430
 REMEDIATION # 20770

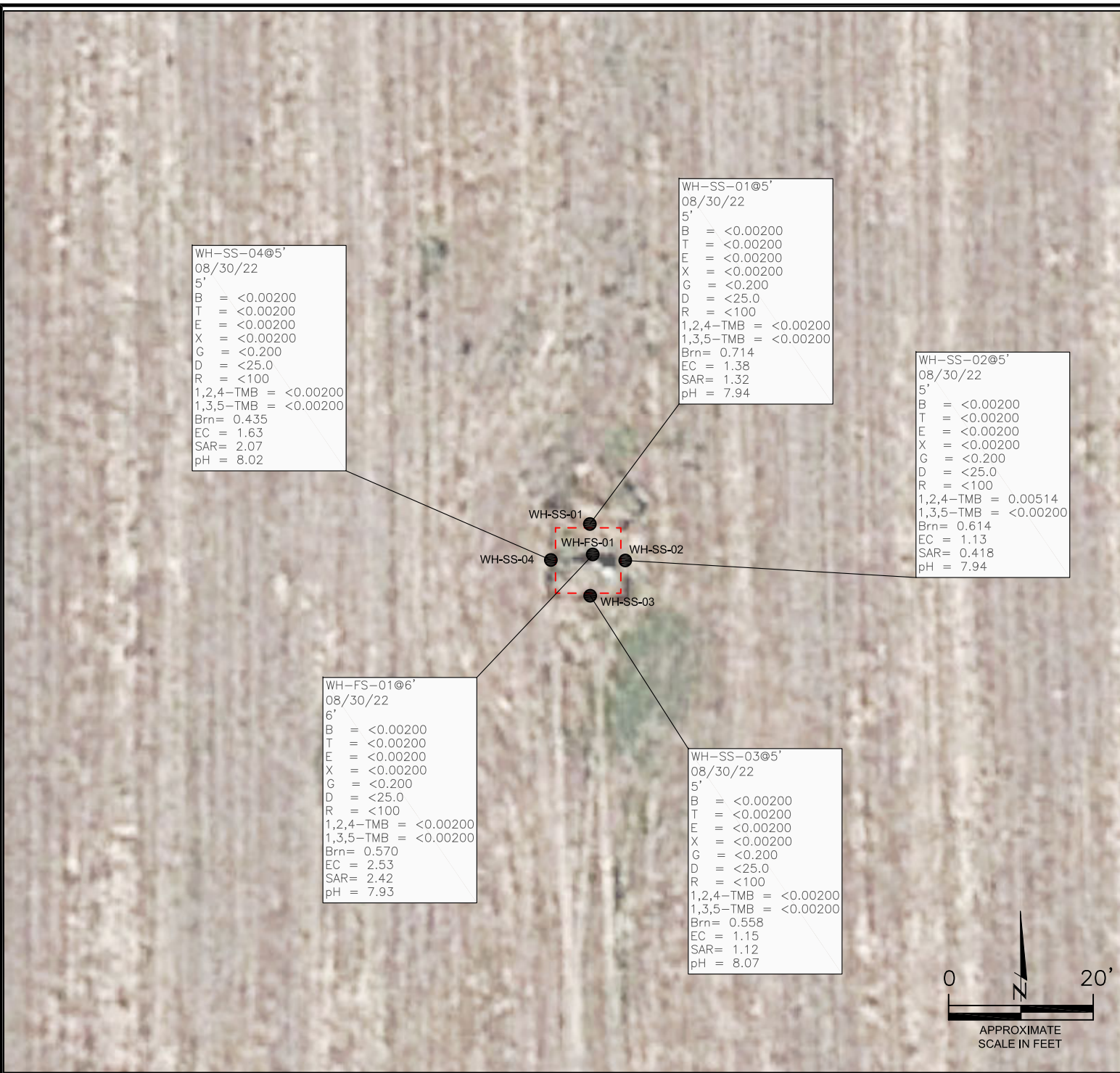
DATE: 09/20/22

FIG. NO.
2

DRAWN BY:
AMN



EAGLE
 ENVIRONMENTAL
 CONSULTING, INC.
 8000 W 44th Ave, Wheat Ridge, CO 80033
 Ph: 303-433-0479 • F: 303-325-5449



LEGEND

- INITIAL ASSESSMENT BOUNDARIES
- APPROXIMATE LOCATION OF SOIL SAMPLES SUBMITTED FOR LABORATORY ANALYSIS

PARAMETERS

SAMPLE LOCATION
DATE
DEPTH (FEET)
B = BENZENE (mg/kg)
T = TOLUENE (mg/kg)
E = ETHYLBENZENE (mg/kg)
X = TOTAL XYLENES (mg/kg)
G = TPH-GRO (mg/kg)
D = TPH-DRO (mg/kg)
R = TPH-RRO (mg/kg)
1,2,4-TMB = 1,2,4 TRIMETHYLBENZENE (mg/kg)
1,3,5-TMB = 1,3,5 TRIMETHYLBENZENE (mg/kg)
Brn= BORON (mg/L)
EC = SPECIFIC CONDUCTANCE (mmhos/cm)
SAR= SODIUM ADSORPTION RATIO
pH = pH (pH UNITS)

mg/kg = MILLIGRAMS PER KILOGRAM
mg/L = MILLIGRAMS PER LITER
mmhos/cm = MILLIMHOS PER CENTIMETER

TPH-GRO = TOTAL PETROLEUM HYDROCARBONS - GASOLINE RANGE ORGANICS
TPH-DRO = TOTAL PETROLEUM HYDROCARBONS - DIESEL RANGE ORGANICS
TPH-RRO = TOTAL PETROLEUM HYDROCARBONS - RESIDUAL RANGE ORGANICS

NOTES:
VALUES PRESENTED WITH A LESS THAN SYMBOL (<) DID NOT CONTAIN CONCENTRATIONS AT OR ABOVE LABORATORY DETECTION LIMITS

VALUES PRESENTED IN **BOLD** EXCEED COGCC TABLE 915-1 REGULATORY LIMITS.

VALUES PRESENTED WITH ASTERISK (*) EXCEED COGCC TABLE 915-1 PROTECTION OF GROUNDWATER SOIL SCREENING LEVELS FOR THAT COMPOUND.

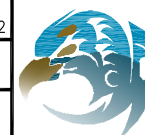
COGCC = COLORADO OIL AND GAS CONSERVATION COMMISSION

SOIL ANALYTICAL MAP
BAKER STATE B #36-12
CLOSURE ASSESSMENT
40.354080 / -104.504900
NE¼ SW¼ SEC.36 T5N R64W 6PM
WELD COUNTY, COLORADO
API # 05-123-17430
REMEDIAL # 20770

DATE:
09/20/22

DRAWN BY:
AMN

FIG.
NO. 3



EAGLE
ENVIRONMENTAL
CONSULTING, INC.
8000 W 44th Ave, Wheat Ridge, CO 80033
Ph: 303-433-0479 • F: 303-325-5449

LEGEND

- INITIAL ASSESSMENT BOUNDARIES
- APPROXIMATE LOCATION OF SOIL SAMPLES SUBMITTED FOR LABORATORY ANALYSIS

PARAMETERS

SAMPLE LOCATION

DATE SAMPLE COLLECTED
APPROXIMATE DEPTH

POLYCYCLIC AROMATIC HYDROCARBONS (PAHs) (mg/kg)

mg/kg = MILLIGRAMS PER KILOGRAM

ND = NON-DETECT

NOTES:

VALUES PRESENTED WITH A LESS THAN SYMBOL (<) DID NOT CONTAIN CONCENTRATIONS AT OR ABOVE LABORATORY DETECTION LIMITS.

VALUES PRESENTED IN **BOLD** EXCEED COGCC TABLE 915-1 REGULATORY LIMITS.

VALUES PRESENTED WITH AN ASTERISK (*) EXCEED COGCC TABLE 915-1 GROUNDWATER SOIL SCREENING LEVELS FOR THAT COMPOUND.

COGCC = COLORADO OIL AND GAS CONSERVATION COMMISSION

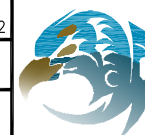
POLYCYCLIC AROMATIC HYDROCARBONS MAP

BAKER STATE B #36-12
CLOSURE ASSESSMENT
40.354080 / -104.504900
NW¼ SW¼ SEC.36 T5N R64W 6PM
WELD COUNTY, COLORADO
API # 05-123-17430
REMEDIAL # 20770

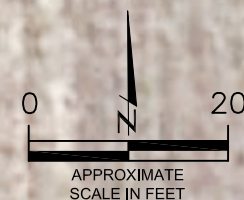
DATE:
09/20/22

DRAWN BY:
AMN

FIG.
NO. 4



EAGLE
ENVIRONMENTAL
CONSULTING, INC.
8000 W 44th Ave, Wheat Ridge, CO 80033
Ph: 303-433-0479 • F: 303-325-5449



APPROXIMATE
SCALE IN FEET

WH-SS-01@5'
08/30/22
5'
ND = <0.00067
1-Methylnaphthalene = 0.00046
2-Methylnaphthalene = 0.000735
Acenaphthene = ND
Anthracene = ND
Benzo(a)anthracene = ND
Benzo(a)pyrene = 0.000738
Benzo(b)fluoranthene = 0.00069
Benzo(k)fluoranthene = ND
Chrysene = ND
Dibenzo(a,h)anthracene = ND
Fluoranthene = 0.000541
Fluorene = ND
Indeno(1,2,3-CD)pyrene = ND
Naphthalene = ND
Pyrene = ND

WH-SS-02@5'
08/30/22
5'
ND = <0.00067
1-Methylnaphthalene = **0.00867***
2-Methylnaphthalene = 0.0184
Acenaphthene = 0.00173
Anthracene = ND
Benzo(a)anthracene = ND
Benzo(a)pyrene = 0.000939
Benzo(b)fluoranthene = 0.000934
Benzo(k)fluoranthene = ND
Chrysene = 0.0012
Dibenzo(a,h)anthracene = ND
Fluoranthene = 0.000712
Fluorene = 0.00279
Indeno(1,2,3-CD)pyrene = ND
Naphthalene = 0.00305
Pyrene = 0.000987

WH-SS-04@5'
08/30/22
5'
ND = <0.00067
1-Methylnaphthalene = ND
2-Methylnaphthalene = ND
Acenaphthene = ND
Anthracene = ND
Benzo(a)anthracene = ND
Benzo(a)pyrene = ND
Benzo(b)fluoranthene = ND
Benzo(k)fluoranthene = ND
Chrysene = ND
Dibenzo(a,h)anthracene = ND
Fluoranthene = ND
Fluorene = ND
Indeno(1,2,3-CD)pyrene = ND
Naphthalene = ND
Pyrene = ND

WH-FS-01@6'
08/30/22
6'
ND = <0.00067
1-Methylnaphthalene = 0.00169
2-Methylnaphthalene = 0.002
Acenaphthene = 0.000602
Anthracene = ND
Benzo(a)anthracene = ND
Benzo(a)pyrene = 0.000879
Benzo(b)fluoranthene = 0.000925
Benzo(k)fluoranthene = ND
Chrysene = 0.00135
Dibenzo(a,h)anthracene = ND
Fluoranthene = 0.000932
Fluorene = 0.000583
Indeno(1,2,3-CD)pyrene = 0.000673
Naphthalene = ND
Pyrene = 0.00246

WH-SS-03@5'
08/30/22
5'
ND = <0.00067
1-Methylnaphthalene = 0.000404
2-Methylnaphthalene = 0.000895
Acenaphthene = ND
Anthracene = ND
Benzo(a)anthracene = ND
Benzo(a)pyrene = 0.00101
Benzo(b)fluoranthene = 0.000996
Benzo(k)fluoranthene = ND
Chrysene = 0.000678
Dibenzo(a,h)anthracene = ND
Fluoranthene = 0.000825
Fluorene = 0.000322
Indeno(1,2,3-CD)pyrene = ND
Naphthalene = ND
Pyrene = 0.000879

BACKGROUND-01@2'
08/30/22
2'

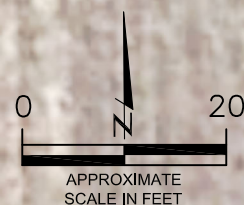
Arsenic = 4.11***
Barium = **191***
Cadmium = 0.239
Copper = 12.1
Lead = **17.5***
Nickel = <9.83
Selenium = **0.400***
Silver = <0.0983
Zinc = <98.3

Background-01

(NS)
WH-SS-01
WH-SS-04 (NS)
WH-FS-01 (NS)
WH-SS-02
WH-SS-03 (NS)

WH-SS-02@5'
08/30/22
5'

Arsenic = 1.82***
Barium = **117***
Cadmium = <0.0969
Chromium (VI) = <1.22**(1)
Copper = <9.69
Lead = <9.69
Nickel = <9.69
Selenium = <0.0969
Silver = <0.0969
Zinc = <96.9



LEGEND

- INITIAL ASSESSMENT BOUNDARIES
- APPROXIMATE LOCATION OF SOIL SAMPLES SUBMITTED FOR LABORATORY ANALYSIS

PARAMETERS

SAMPLE LOCATION
DATE SAMPLE COLLECTED
APPROXIMATE DEPTH
Arsenic = (mg/kg)
Barium = (mg/kg)
Cadmium = (mg/kg)
Chromium (VI) = (mg/kg)
Copper = (mg/kg)
Lead = (mg/kg)
Nickel = (mg/kg)
Selenium = (mg/kg)
Silver = (mg/kg)
Zinc = (mg/kg)

mg/kg = MILLIGRAMS PER KILOGRAM

(NS) – NOT SAMPLED

NOTES:

VALUES PRESENTED WITH A LESS THAN SYMBOL (<) DID NOT CONTAIN CONCENTRATIONS AT/OR ABOVE LABORATORY REPORTING LIMITS AND/OR MINIMUM DETECTION LIMITS.

VALUES PRESENTED IN **BOLD** EXCEED COGCC TABLE 915-1 REGULATORY LIMITS.

*VALUES EXCEED COGCC TABLE 915-1 "PROTECTION OF GROUNDWATER SOIL SCREENING LEVELS" FOR THAT COMPOUND.

**ACHIEVABLE PRACTICAL QUANTITATIVE LIMITS FOR HEXAVALENT CHROMIUM (Cr VI) IN SOILS IS IN THE RANGE OF 0.1 TO 1 mg/kg. (1) SAMPLE REQUIRED DILUTION, RAISING LABORATORY REPORTING AND DETECTION LIMITS – SAMPLE NON-DETECT.

***ARSENIC IS NATURALLY OCCURRING IN COLORADO. LOCAL "CLEAN-UP LEVEL" (5.14 mg/kg) is 1.25*BACKGROUND (4.11 mg/kg).

COGCC = COLORADO OIL AND GAS CONSERVATION COMMISSION

METALS IN SOIL MAP

BAKER STATE B #36-12
CLOSURE ASSESSMENT
40.354080 / -104.504900
NE¼ SW¼ SEC.36 T5N R64W 6PM
WELD COUNTY, COLORADO
API # 05-123-17430
REMEDATION # 20770

DATE:
09/27/22

DRAWN BY:
AMN

FIG.
NO. 5



EAGLE
ENVIRONMENTAL
CONSULTING, INC.
8000 W 44th Ave, Wheat Ridge, CO 80033
Ph: 303-433-0479 • F: 303-325-5449



TABLES

Table 1: Photoionization Detector Reading Summary

Table 2: Soil Analytical Results Summary

Table 3: Polycyclic Aromatic Hydrocarbons Analytical Results Summary

Table 4: Metals Analytical Results Summary

TABLE 1
PHOTOIONIZATION DETECTOR READING SUMMARY
BAKER STATE B #36-12
CLOSURE ASSESSMENT
40.354080 / -104.504900
NW 1/4 SW 1/4 SEC.36 T5N R64W 6PM
WELD COUNTY, COLORADO
API # 05-123-17430
REMEDIAION # 20770

Sample Location (Latitude/Longitude)	Date	Approximate Depth (feet)	PID Reading (ppm-v)	Lab Submission (Y/N)
WH-SS-01 @ 5' (40.354111 / -104.504899)	08/30/22	5	8.0	Y
WH-SS-02 @ 5' (40.354099 / -104.504882)	08/30/22	5	112.4	Y
WH-SS-03 @ 5' (40.354087 / -104.504899)	08/30/22	5	274.8	Y
WH-SS-04 @ 5' (40.354102 / -104.504918)	08/30/22	5	2.7	Y
WH-FS-01 @ 6' (40.354100 / -104.504899)	08/30/22	6	212.3	Y
Background-01 @ 2' (40.354130 / -104.504854)	08/30/22	2	10.7	Y
(Y/N) = Yes or No ppm-v = parts per million by volume PID = Photoionization Detector				

TABLE 2
SOIL ANALYTICAL RESULTS SUMMARY
BAKER STATE B #36-12
CLOSURE ASSESSMENT
40.354080 / -104.504900
NW 1/4 SW 1/4 SEC.36 T5N R64W 6PM
WELD COUNTY, COLORADO
API # 05-123-17430
REMEDATION # 20770

Sample Location (Latitude/Longitude)	Date	Approximate Depth (feet)	PID Reading (ppm-v)	Benzene (mg/kg)	Toluene (mg/kg)	Ethylbenzene (mg/kg)	Total Xylenes (mg/kg)	TPH-GRO (mg/kg)	TPH-DRO (mg/kg)	TPH-RRO (mg/kg)	1,2,4-TMB (mg/kg)	1,3,5-TMB (mg/kg)	Boron (mg/L)	Specific Conductance (mmhos/cm)	pH (pH units)	SAR
COGCC Table 915-1 Residential Screening Levels (mg/kg)				1.20	490	5.8	58	500			30	27	2	<4	6-8.3	<6
COGCC Table 915-1 Protection of Groundwater Soil Screening Levels				0.0026	0.69	0.78	9.9	--			0.0081	0.0087	--	--	--	--
WH-SS-01 @ 5' (40.354111 / -104.504899)	08/30/22	5	0.1	<0.00200	<0.00200	<0.00200	<0.00200	<0.200	<25.0	<100	<0.00200	<0.00200	0.714	1.38	7.94	1.32
WH-SS-02 @ 5' (40.354099 / -104.504882)	08/30/22	5	92.5	<0.00200	<0.00200	<0.00200	<0.00200	<0.200	<25.0	<100	0.00514	<0.00200	0.614	1.13	7.94	0.418
WH-SS-03 @ 5' (40.354087 / -104.504899)	08/30/22	5	33.5	<0.00200	<0.00200	<0.00200	<0.00200	<0.200	<25.0	<100	<0.00200	<0.00200	0.558	1.15	8.07	1.12
WH-SS-04 @ 5' (40.354102 / -104.504918)	08/30/22	5	18.9	<0.00200	<0.00200	<0.00200	<0.00200	<0.200	<25.0	<100	<0.00200	<0.00200	0.435	1.63	8.02	2.07
WH-FS-01 @ 6' (40.354100 / -104.504899)	08/30/22	6	24.4	<0.00200	<0.00200	<0.00200	<0.00200	<0.200	<25.0	<100	<0.00200	<0.00200	0.570	2.53	7.93	2.42
COGCC = Colorado Oil and Gas Conservation Commission mg/kg = milligrams per kilogram mmhos/cm = millimhos per centimeter PID = Photoionization Detector ppm-v = parts per million by volume mg/L = milligrams per liter SAR = Sodium Adsorption Ratio Note: Values presented with a less than symbol (<) did not contain concentrations at or above the laboratory reporting limit. Note: Values presented in BOLD contained concentrations exceeding COGCC Table 915-1 Regulatory Limits.																

TABLE 3
POLYCYCLIC AROMATIC HYDROCARBONS ANALYTICAL RESULTS SUMMARY
BAKER STATE B #36-12
CLOSURE ASSESSMENT
40.354080 / -104.504900
NW 1/4 SW 1/4 SEC.36 T5N R64W 6PM
WELD COUNTY, COLORADO
API # 05-123-17430
REMEDATION # 20770

Sample Location (Latitude/Longitude)	Date	Approximate Depth (feet)	PID Reading (ppm- v)	1-Methyl- naphthalene (mg/kg)	2-Methyl- naphthalene (mg/kg)	Acenaphthene (mg/kg)	Anthracene (mg/kg)	Benzo(a)-anthracene (mg/kg)	Benzo(a)- pyrene (mg/kg)	Benzo(b)- fluoranthene (mg/kg)	Benzo(k)- fluoranthene (mg/kg)	Chrysene (mg/kg)	Dibenzo(a,h)- anthracene (mg/kg)	Fluoranthene (mg/kg)	Fluorene (mg/kg)	Indeno(1,2,3- cd)-pyrene (mg/kg)	Naphthalene (mg/kg)	Pyrene (mg/kg)
COGCC Table 915-1 Residential Screening Levels				18	24	360	1,800	1.1	0.11	1.1	11	110	0.11	240	240	1.1	2	180
COGCC Table 915-1 Protection of Groundwater Soil Screening Levels				0.006	0.019	0.55	5.8	0.011	0.24	0.3	2.9	9	0.096	8.9	0.54	0.98	0.0038	1.3
WH-SS-01 @ 5' (40.354111 / -104.504899)	08/30/22	5	0.1	0.00046	0.000735	<0.00067	<0.00067	<0.00067	0.000738	0.00069	<0.00067	<0.00067	<0.00067	0.000541	<0.00067	<0.00067	<0.00067	<0.00067
WH-SS-02 @ 5' (40.354099 / -104.504882)	08/30/22	5	92.5	0.00867*	0.0184	0.00173	<0.00067	<0.00067	0.000939	0.000934	<0.00067	0.0012	<0.00067	0.000712	0.00279	<0.00067	0.00305	0.000987
WH-SS-03 @ 5' (40.354087 / -104.504899)	08/30/22	5	33.5	0.000404	0.000895	<0.00067	<0.00067	<0.00067	0.00101	0.000996	<0.00067	0.000678	<0.00067	0.000825	0.000322	<0.00067	<0.00067	0.000879
WH-SS-04 @ 5' (40.354102 / -104.504918)	08/30/22	5	18.9	<0.00067	<0.00067	<0.00067	<0.00067	<0.00067	<0.00067	<0.00067	<0.00067	<0.00067	<0.00067	<0.00067	<0.00067	<0.00067	<0.00067	<0.00067
WH-FS-01 @ 6' (40.354100 / -104.504899)	08/30/22	6	24.4	0.00169	0.002*	0.000602	<0.00067	<0.00067	0.000879	0.000925	<0.00067	0.00135	<0.00067	0.000932	0.000583	0.000673	<0.00067	0.00246
COGCC = Colorado Oil and Gas Conservation Commission mg/kg = milligrams per kilogram ppm-v = parts per million by volume Note: Values presented with a less than symbol (<) did not contain concentrations at or above the laboratory reporting limit. Note: Values presented in BOLD contained concentrations exceeding COGCC Table 915-1 Regulatory Limits.																		
				PID = Photoionization Detector														

TABLE 4
METALS ANALYTICAL RESULTS SUMMARY
BAKER STATE B #36-12
CLOSURE ASSESSMENT
40.354080 / -104.504900
NW 1/4 SW 1/4 SEC.36 T5N R64W 6PM
WELD COUNTY, COLORADO
API # 05-123-17430
REMEDATION # 20770

Sample Location (Latitude/Longitude)	Date	Approximate Depth (feet)	Arsenic (mg/kg)	Barium (mg/kg)	Cadmium (mg/kg)	Hexavalent Chromium (mg/kg)	Copper (mg/kg)	Lead (mg/kg)	Nickel (mg/kg)	Selenium (mg/kg)	Silver (mg/kg)	Zinc (mg/kg)
COGCC Table 915-1 Residential Screening Levels			0.68***	15,000	71	0.3**	3,100	400	1,500	390	390	23,000
COGCC Table 915-1 Protection of Groundwater Soil Screening Levels			0.29***	82	0.38	0.00067**	46	14	26	0.26	0.8	370
Local Clean-Up Level			5.14***	-	-	-	-	-	-	-	-	-
WH-SS-02 @ 5' (40.354099 / -104.504882)	08/30/22	5	1.82***	117*	<0.0969	<1.22	<9.69	<9.69	<9.69	<0.0969	<0.0969	<96.9
Background-01 @ 2' (40.354130 / -104.504854)	08/30/22	2	4.11***	191*	0.239	NA	12.1	17.5*	<9.83	0.400*	<0.0983	<98.3

COGCC = Colorado Oil and Gas Conservation Commission NA = Not Analyzed
mg/kg = milligrams per kilogram

Notes: Values presented with a less than symbol (<) did not contain concentrations at or above the laboratory reporting limit or minimum detection levels.
Values presented in **BOLD** contained concentrations exceeding applicable COGCC Table 915-1 Regulatory Limits.
Values presented in **BOLD**** contained concentrations exceeding COGCC Table 915-1 Protection of Groundwater Soil Screening Levels.

**Achievable practical quantitative limits for Hexavalent Chromium in soils is in the range of 0.1 to 1 mg/kg.
***Arsenic is naturally occurring in Colorado.



ATTACHMENT A

Photo Log

Baker State B #36-12

API # 05-123-17430

Remediation # 20770

Closure Assessment

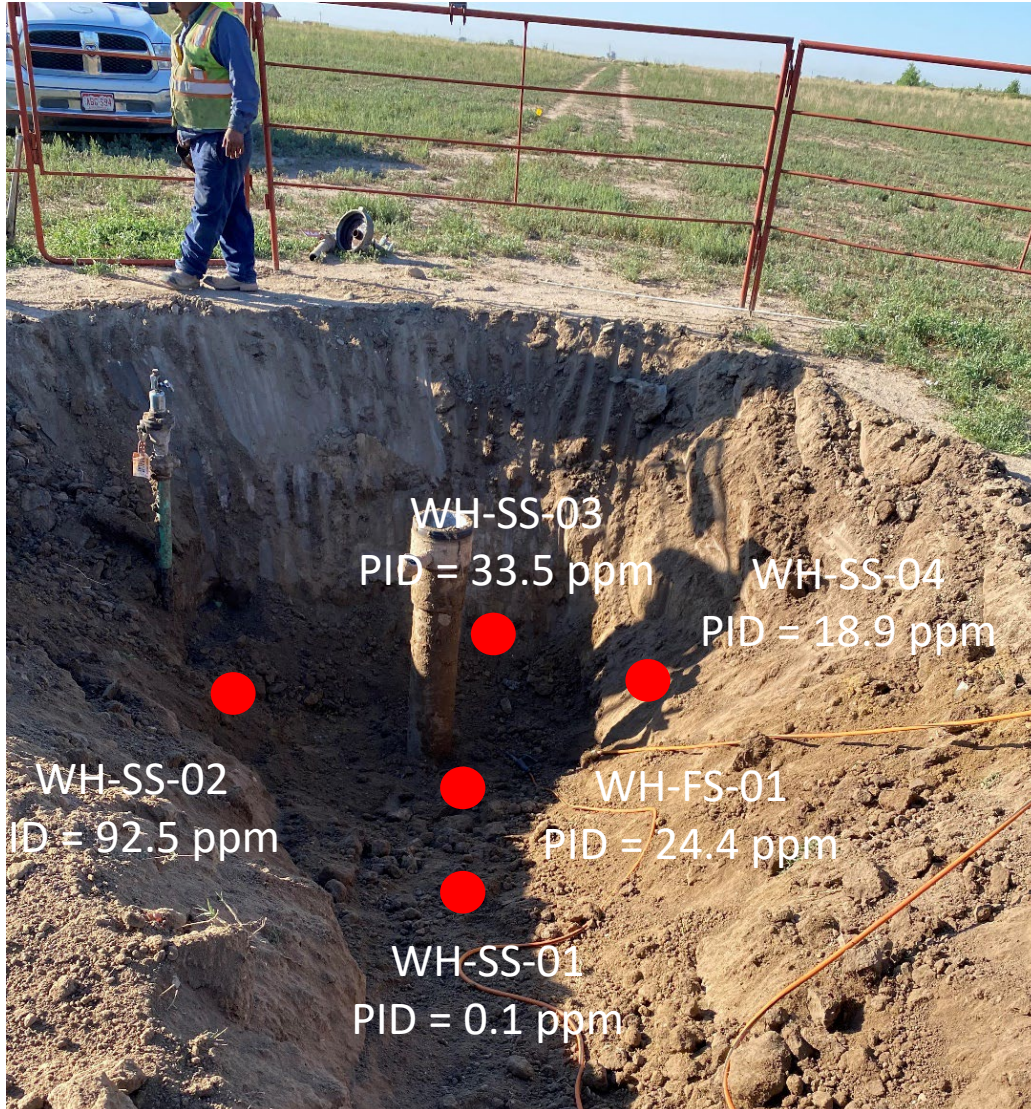
August 2022



EAGLE
ENVIRONMENTAL
CONSULTING, INC.
8000 W 44th Ave, Wheat Ridge, CO 80033
Ph: 303-433-0479 • F: 303-325-5449



Wellhead Excavation – 08/30/22



Looking south

No petroleum hydrocarbon staining observed

Slight odor observed throughout



ATTACHMENT B

Laboratory Analytical Reports



September 27, 2022

Eagle Environmental Consulting, Inc.

Martin C Eckert III

8000 W 44th Ave

Wheat Ridge CO 80033

Project Name - Noble - Baker State B #36-12

Project Number - [none]

Attached are your analytical results for Noble - Baker State B #36-12 received by Origins Laboratory, Inc. August 30, 2022. This project is associated with Origins project number Y208696-01.

The analytical results in the following report were analyzed under the guidelines of EPA Methods. These methods are identified as follows; "SW" are defined in SW-846, "EPA" are defined in 40CFR part 136 and "SM" are defined in the most current revision of Standard Methods For the Examination of Water and Wastewater.

The analytical results apply specifically to the samples and analyses specified per the attached Chain of Custody. As such, this report shall not be reproduced except in full, without the written approval of Origin's laboratory.

Unless otherwise noted, the analytical results for all soil samples are reported on a wet weight basis. All analytical analyses were performed under NELAP guidelines unless noted by a data qualifier.

Any holding time exceedances, deviations from the method specifications or deviations from Origins Laboratory's Standard Operating Procedures are outlined in the case narrative.

Thank you for selecting Origins for your analytical needs. Please contact us with any questions concerning this report, or if we can help with anything at all.

Origins Laboratory, Inc.
303.433.1322
o-squad@oelabinc.com



1725 Elk Place, Denver, CO 80211 | Phone: 303.433.1322 | Fax: 303.265.9645

Eagle Environmental Consulting, Inc.
8000 W 44th Ave
Wheat Ridge CO 80033

Martin C Eckert III
Project Number: [none]
Project: Noble - Baker State B #36-12

CROSS REFERENCE REPORT

Sample ID	Laboratory ID	Matrix	Date Sampled	Date Received
WH-SS-01@5'	Y208696-01	Soil	August 30, 2022 8:32	08/30/2022 10:30
WH-SS-02@5'	Y208696-02	Soil	August 30, 2022 8:34	08/30/2022 10:30
WH-SS-03@5'	Y208696-03	Soil	August 30, 2022 8:35	08/30/2022 10:30
WH-SS-04@5'	Y208696-04	Soil	August 30, 2022 8:36	08/30/2022 10:30
WH-FS-01@6'	Y208696-05	Soil	August 30, 2022 8:37	08/30/2022 10:30

Chain of Custody Modification Request

On 9/20/2022, Grace Congdon from Eagle Environmental contacted Jordan Bynon via email regarding Y208696 requesting that Table 915 Metals be added to WH-SS-02@5'.

Requested modifications to the chain of custody were made by Jordan Bynon on 9/20/2022.

Origins Laboratory, Inc.



The results in this report apply to the samples analyzed in accordance with the chain of custody document. This analytical report must be reproduced in its entirety.

Eagle Environmental Consulting, Inc.
8000 W 44th Ave
Wheat Ridge CO 80033

Martin C Eckert III
Project Number: [none]
Project: Noble - Baker State B #36-12

ORIGINS
LABORATORY, INC

www.originslaboratory.com

Y208696

page 1 of 1

Client: Eagle Environmental Consulting
Address: 8000 W 44th Ave
Wheat Ridge, CO 80033
Telephone Number: 303-433-0479
Email Address: mce@eagle-enviro.com

Project Manager: Martin Eckert III
Project Name: Baker State B #36-12
Project Number: --
Samples Collected By: CT/IM

Fax: 303.265.9645

Sample ID Description	Date Sampled	Time Sampled	# of Containers	Preservative			Matrix		Analysis	Sample Instructions
				Unpreserved	HCl	HNO ₃	Other	Groundwater		
WH-SS-0105	8/30/22	032	2	X				X	X	1
WH-SS-0205		034						X	X	2
WH-SS-0305		035						X	X	3
WH-SS-0405		036						X	X	4
WH-FS-0106		037						X	X	5
								X	X	6
								X	X	7
								X	X	8
								X	X	9
								X	X	10

Relinquished By: *CT/IM* Date: 8/30/22 Time: 1030
Relinquished By: *CT/IM* Date: 8/30/22 Time: 1030

Received By: *CT/IM* Date: 8/30/22 Time: 1030
Received By: *CT/IM* Date: 8/30/22 Time: 1030

Turnaround Time: Same Day ☐ 24 Hr ☐ 48 Hr ☐ 72 Hr ☒ Standard

Temp Received: 4.1
Date Results Needed: NOBLE

Origins Laboratory, Inc.

Bynon

The results in this report apply to the samples analyzed in accordance with the chain of custody document. This analytical report must be reproduced in its entirety.

Eagle Environmental Consulting, Inc.
8000 W 44th Ave
Wheat Ridge CO 80033

Martin C Eckert III
Project Number: [none]
Project: Noble - Baker State B #36-12

Origins Laboratory

F-012207-01-R1
Effective Date: 01/09/12

Sample Receipt Checklist

Origins Work Order: Y208696

Client: Eagle

Client Project ID: Baker State B #36-

Checklist Completed by: MS

Shipped Via: HD

(UPS, FedEx, Hand Delivered, Pick-up, etc.)

Date/time completed: 8/30/22

Airbill #: N/A

Matrix(s) Received: (Check all that apply): X Soil/Solid Water Other:

Cooler Number/Temperature: 1 / 4.1 °C / °C / °C (Describe) °C

Thermometer ID: T004

Requirement Description	Yes	No	N/A	Comments (if any)
If samples require cooling, was the temperature between 0°C to ≤ 6°C ⁽¹⁾ ?	<u>X</u>			
Is there ice present (document if blue ice is used)	<u>X</u>			
Are custody seals present on cooler? (if so, document in comments if they are signed and dated, broken or intact)		<u>X</u>		
Are custody seals present on each sample container? (if so, document in comments if they are signed and dated, broken or intact)		<u>X</u>		
Were all samples received intact ⁽¹⁾ ?	<u>X</u>			
Was adequate sample volume provided ⁽¹⁾ ?	<u>X</u>			
Are short holding time analytes or samples with HTs due within 48 hours present ⁽¹⁾ ?		<u>X</u>		
Is a chain-of-custody (COC) present and filled out completely ⁽¹⁾ ?	<u>X</u>			
Does the COC agree with the number and type of sample bottles received ⁽¹⁾ ?	<u>X</u>			
Do the sample IDs on the bottle labels match the COC ⁽¹⁾ ?	<u>X</u>			
Is the COC properly relinquished by the client with date and time recorded ⁽¹⁾ ?	<u>X</u>			
For volatiles in water – is there headspace (> ¼ inch bubble) present? If yes, contact client and note in narrative.			<u>X</u>	
Are samples preserved that require preservation and was it checked ⁽¹⁾ ? (note ID of confirmation instrument used in comments) / (preservation is not confirmed for subcontracted analyses in order to insure sample integrity)/(pH <2 for samples preserved with HNO ₃ , HCL, H ₂ SO ₄) / (pH >10 for samples preserved with NaAsO ₂ +NaOH, ZnAc+NaOH)			<u>X</u>	
Additional Comments (if any):				

⁽¹⁾If NO, then contact the client before proceeding with analysis and note date/time and person contacted as well as the corrective action to in the additional comments (above) and the case narrative.

Reviewed by (Project Manager) MP

8/31/22
Date/Time Reviewed

Origins Laboratory, Inc.

J. Bynon

The results in this report apply to the samples analyzed in accordance with the chain of custody document. This analytical report must be reproduced in its entirety.

Eagle Environmental Consulting, Inc.
8000 W 44th Ave
Wheat Ridge CO 80033

Martin C Eckert III
Project Number: [none]
Project: Noble - Baker State B #36-12

WH-SS-01@5'

8/30/2022 8:32:00AM

Analyte	Result	Min Detection Limit	Reporting Limit	Units	Dilution	Batch	Prepared	Analyzed	Notes
---------	--------	---------------------	-----------------	-------	----------	-------	----------	----------	-------

Origins Laboratory, Inc.
Y208696-01 (Soil)

Boron (DTPA Sorbitol)

Boron	0.714	0.0986	mg/L	1	B2H3105	08/31/2022	09/01/2022	
-------	-------	--------	------	---	---------	------------	------------	--

DRO/ORO by EPA 8015D

Diesel (C10-C28)	ND	25.0	mg/kg	1	B2H3015	08/30/2022	09/14/2022	B, U
Residual Range Organics (C28-C40)	ND	100	"	"	"	"	"	U

Surrogate: o-Terphenyl	81.8 %	50-150	"	"	"
------------------------	--------	--------	---	---	---

GBTEX+TMBs by 8260D

1,2,4-Trimethylbenzene	ND	0.00200	mg/kg	1	B2H3123	08/31/2022	09/05/2022	U
1,3,5-Trimethylbenzene	ND	0.00200	"	"	"	"	"	U
Benzene	ND	0.00200	"	"	"	"	"	U
Ethylbenzene	ND	0.00200	"	"	"	"	"	U
Toluene	ND	0.00200	"	"	"	"	"	U
Xylenes, total	ND	0.00200	"	"	"	"	"	U
Gasoline Range Hydrocarbons	ND	0.200	"	"	"	"	"	U

Surrogate: 1,2-Dichloroethane-d4	98.1 %	70-130	"	"	"
----------------------------------	--------	--------	---	---	---

Origins Laboratory, Inc.



The results in this report apply to the samples analyzed in accordance with the chain of custody document. This analytical report must be reproduced in its entirety.

Eagle Environmental Consulting, Inc.
8000 W 44th Ave
Wheat Ridge CO 80033

Martin C Eckert III
Project Number: [none]
Project: Noble - Baker State B #36-12

WH-SS-01@5'

8/30/2022 8:32:00AM

Analyte	Result	Min Detection Limit	Reporting Limit	Units	Dilution	Batch	Prepared	Analyzed	Notes
---------	--------	---------------------	-----------------	-------	----------	-------	----------	----------	-------

Origins Laboratory, Inc.
Y208696-01 (Soil)

GBTEX+TMBs by 8260D

Surrogate: Toluene-d8	94.6 %	70-130	B2H31 23	08/31/2022	09/05/2022
Surrogate: 4-Bromofluorobenzene	92.2 %	70-130	"	"	"

Metals by Saturated Paste by EPA 6010

Calcium	6.25	0.499	meq/L	10	[CALC]	08/31/2022	09/01/2022
Magnesium	3.76	0.823	"	"	"	"	"
Sodium	2.96	0.435	"	"	"	"	"

PAH by 8270D SIM

1-Methylnaphthalene	0.00046	0.000364	0.00067	mg/Kg	1	L635406	09/01/2022	09/01/2022	J
2-Methylnaphthalene	0.000735	0.000645	0.00067	"	"	"	"	"	
Acenaphthene	ND	0.000304	0.00067	"	"	"	"	"	
Anthracene	ND	0.000334	0.00067	"	"	"	"	"	
Benzo(a)anthracene	ND	0.000493	0.00067	"	"	"	"	"	
Benzo(a)pyrene	0.000738	0.000468	0.00067	"	"	"	"	"	
Benzo(b)fluoranthene	0.00069	0.000585	0.00067	"	"	"	"	"	
Benzo(k)fluoranthene	ND	0.000437	0.00067	"	"	"	"	"	
Chrysene	ND	0.000624	0.00067	"	"	"	"	"	
Dibenz(a,h)anthracene	ND	0.000614	0.00067	"	"	"	"	"	
Fluoranthene	0.000541	0.000394	0.00067	"	"	"	"	"	J
Fluorene	ND	0.000286	0.00067	"	"	"	"	"	

Origins Laboratory, Inc.



The results in this report apply to the samples analyzed in accordance with the chain of custody document. This analytical report must be reproduced in its entirety.

Eagle Environmental Consulting, Inc.
8000 W 44th Ave
Wheat Ridge CO 80033

Martin C Eckert III
Project Number: [none]
Project: Noble - Baker State B #36-12

WH-SS-01@5'

8/30/2022 8:32:00AM

Analyte	Result	Min Detection Limit	Reporting Limit	Units	Dilution	Batch	Prepared	Analyzed	Notes
---------	--------	---------------------	-----------------	-------	----------	-------	----------	----------	-------

Waypoint Analytical, LLC.
Y208696-01 (Soil)

PAH by 8270D SIM

Indeno(1,2,3-cd)pyrene	ND	0.000627	0.00067	mg/Kg	1	L635406	09/01/2022	09/01/2022
Naphthalene	ND	0.000484	0.00067	"	"	"	"	"
Pyrene	ND	0.000643	0.00067	"	"	"	"	"

Surrogate: 2-Fluorobiphenyl	55.5 %	33-115	"	"	"
Surrogate: 4-Terphenyl-d14	63.3 %	33-122	"	"	"
Surrogate: Nitrobenzene-d5	57.9 %	29-110	"	"	"

pH in Soil by 9045D

pH	7.94	pH Units	1	B2H3108	08/31/2022	09/01/2022
----	------	----------	---	---------	------------	------------

SAR by 20B Saturated Paste

SAR	1.32	SAR	1	B2H3102	08/31/2022	09/01/2022
-----	------	-----	---	---------	------------	------------

Specific Conductance Mod. 9050A

Specific Conductance (EC)	1.38	0.00500	mmhos/cm	1	B2H3108	08/31/2022	09/01/2022
---------------------------	------	---------	----------	---	---------	------------	------------

Origins Laboratory, Inc.



The results in this report apply to the samples analyzed in accordance with the chain of custody document. This analytical report must be reproduced in its entirety.

Eagle Environmental Consulting, Inc.
8000 W 44th Ave
Wheat Ridge CO 80033

Martin C Eckert III
Project Number: [none]
Project: Noble - Baker State B #36-12

WH-SS-02@5'

8/30/2022 8:34:00AM

Analyte	Result	Min Detection Limit	Reporting Limit	Units	Dilution	Batch	Prepared	Analyzed	Notes
---------	--------	---------------------	-----------------	-------	----------	-------	----------	----------	-------

Origins Laboratory, Inc.
Y208696-02 (Soil)

Boron (DTPA Sorbitol)

Boron	0.614	0.0995	mg/L	1	B2H3105	08/31/2022	09/01/2022	
-------	-------	--------	------	---	---------	------------	------------	--

DRO/ORO by EPA 8015D

Diesel (C10-C28)	ND	25.0	mg/kg	1	B2H3015	08/30/2022	09/14/2022	B, U
Residual Range Organics (C28-C40)	ND	100	"	"	"	"	"	U

Surrogate: o-Terphenyl	80.3 %	50-150			"	"	"	
------------------------	--------	--------	--	--	---	---	---	--

GBTEX+TMBs by 8260D

1,2,4-Trimethylbenzene	0.00514	0.00200	mg/kg	1	B2H3123	08/31/2022	09/05/2022	
1,3,5-Trimethylbenzene	ND	0.00200	"	"	"	"	"	U
Benzene	ND	0.00200	"	"	"	"	"	U
Ethylbenzene	ND	0.00200	"	"	"	"	"	U
Toluene	ND	0.00200	"	"	"	"	"	U
Xylenes, total	ND	0.00200	"	"	"	"	"	U
Gasoline Range Hydrocarbons	ND	0.200	"	"	"	"	"	U

Surrogate: 1,2-Dichloroethane-d4	101 %	70-130			"	"	"	
Surrogate: Toluene-d8	94.8 %	70-130			"	"	"	

Origins Laboratory, Inc.



The results in this report apply to the samples analyzed in accordance with the chain of custody document. This analytical report must be reproduced in its entirety.

Eagle Environmental Consulting, Inc.
8000 W 44th Ave
Wheat Ridge CO 80033

Martin C Eckert III
Project Number: [none]
Project: Noble - Baker State B #36-12

WH-SS-02@5'

8/30/2022 8:34:00AM

Analyte	Result	Min Detection Limit	Reporting Limit	Units	Dilution	Batch	Prepared	Analyzed	Notes
---------	--------	---------------------	-----------------	-------	----------	-------	----------	----------	-------

Origins Laboratory, Inc.
Y208696-02 (Soil)

GBTEX+TMBs by 8260D

Surrogate: 4-Bromofluorobenzene	95.1 %	70-130	B2H31 23	08/31/2022	09/05/2022
---------------------------------	--------	--------	-------------	------------	------------

Metals by Saturated Paste by EPA 6010

Calcium	5.74	0.499	meq/L	10	[CALC]	08/31/2022	09/01/2022
Magnesium	3.21	0.823	"	"	"	"	"
Sodium	0.884	0.435	"	"	"	"	"

PAH by 8270D SIM

1-Methylnaphthalene	0.00867	0.000364	0.00067	mg/Kg	1	L635406	09/01/2022	09/01/2022
2-Methylnaphthalene	0.0184	0.000645	0.00067	"	"	"	"	"
Acenaphthene	0.00173	0.000304	0.00067	"	"	"	"	"
Anthracene	ND	0.000334	0.00067	"	"	"	"	"
Benzo(a)anthracene	ND	0.000493	0.00067	"	"	"	"	"
Benzo(a)pyrene	0.000939	0.000468	0.00067	"	"	"	"	"
Benzo(b)fluoranthene	0.000934	0.000585	0.00067	"	"	"	"	"
Benzo(k)fluoranthene	ND	0.000437	0.00067	"	"	"	"	"
Chrysene	0.0012	0.000624	0.00067	"	"	"	"	"
Dibenz(a,h)anthracene	ND	0.000614	0.00067	"	"	"	"	"
Fluoranthene	0.000712	0.000394	0.00067	"	"	"	"	"
Fluorene	0.00279	0.000286	0.00067	"	"	"	"	"
Indeno(1,2,3-cd)pyrene	ND	0.000627	0.00067	"	"	"	"	"

Origins Laboratory, Inc.



The results in this report apply to the samples analyzed in accordance with the chain of custody document. This analytical report must be reproduced in its entirety.

Eagle Environmental Consulting, Inc.
8000 W 44th Ave
Wheat Ridge CO 80033

Martin C Eckert III
Project Number: [none]
Project: Noble - Baker State B #36-12

WH-SS-02@5'

8/30/2022 8:34:00AM

Analyte	Result	Min Detection Limit	Reporting Limit	Units	Dilution	Batch	Prepared	Analyzed	Notes
---------	--------	---------------------	-----------------	-------	----------	-------	----------	----------	-------

Waypoint Analytical, LLC.
Y208696-02 (Soil)

PAH by 8270D SIM

Naphthalene	0.00305	0.000484	0.00067	mg/Kg	1	L635406	09/01/2022	09/01/2022
Pyrene	0.000987	0.000643	0.00067	"	"	"	"	"

Surrogate: 2-Fluorobiphenyl	56.9 %	33-115	"	"	"
Surrogate: 4-Terphenyl-d14	67 %	33-122	"	"	"
Surrogate: Nitrobenzene-d5	60.9 %	29-110	"	"	"

pH in Soil by 9045D

pH	7.94	pH Units	1	B2H3108	08/31/2022	09/01/2022
----	------	----------	---	---------	------------	------------

SAR by 20B Saturated Paste

SAR	0.418	SAR	1	B2H3102	08/31/2022	09/01/2022
-----	-------	-----	---	---------	------------	------------

Specific Conductance Mod. 9050A

Specific Conductance (EC)	1.13	0.00500	mmhos/cm	1	B2H3108	08/31/2022	09/01/2022
---------------------------	------	---------	----------	---	---------	------------	------------

Table 915 metals by EPA 6020B

Arsenic	1.82	0.0969	mg/kg	10	B2I2102	09/21/2022	09/22/2022
Barium	117	9.69	"	"	"	"	"
Cadmium	ND	0.0969	"	"	"	"	"

Origins Laboratory, Inc.



The results in this report apply to the samples analyzed in accordance with the chain of custody document. This analytical report must be reproduced in its entirety.

Eagle Environmental Consulting, Inc.
8000 W 44th Ave
Wheat Ridge CO 80033

Martin C Eckert III
Project Number: [none]
Project: Noble - Baker State B #36-12

WH-SS-02@5'

8/30/2022 8:34:00AM

Analyte	Result	Min Detection Limit	Reporting Limit	Units	Dilution	Batch	Prepared	Analyzed	Notes
---------	--------	---------------------	-----------------	-------	----------	-------	----------	----------	-------

Origins Laboratory, Inc.
Y208696-02 (Soil)

Table 915 metals by EPA 6020B

Copper	ND	9.69	mg/kg	10	B2I2102	09/21/2022	09/22/2022
Lead	ND	9.69	"	"	"	"	"
Nickel	ND	9.69	"	"	"	"	"
Selenium	ND	0.0969	"	"	"	"	"
Silver	ND	0.0969	"	"	"	"	"
Zinc	ND	96.9	"	"	"	"	"

Total Metals by 7196A

Chromium, Hexavalent	ND	1.22	2.5	mg/Kg	5	L639520	08/30/2022	09/26/2022
----------------------	----	------	-----	-------	---	---------	------------	------------

Origins Laboratory, Inc.



The results in this report apply to the samples analyzed in accordance with the chain of custody document. This analytical report must be reproduced in its entirety.

Eagle Environmental Consulting, Inc.
8000 W 44th Ave
Wheat Ridge CO 80033

Martin C Eckert III
Project Number: [none]
Project: Noble - Baker State B #36-12

WH-SS-03@5'

8/30/2022 8:35:00AM

Analyte	Result	Min Detection Limit	Reporting Limit	Units	Dilution	Batch	Prepared	Analyzed	Notes
---------	--------	---------------------	-----------------	-------	----------	-------	----------	----------	-------

Origins Laboratory, Inc.
Y208696-03 (Soil)

Boron (DTPA Sorbitol)

Boron	0.558	0.0983	mg/L	1	B2H3105	08/31/2022	09/01/2022	
-------	-------	--------	------	---	---------	------------	------------	--

DRO/ORO by EPA 8015D

Diesel (C10-C28)	ND	25.0	mg/kg	1	B2H3015	08/30/2022	09/14/2022	B, U
Residual Range Organics (C28-C40)	ND	100	"	"	"	"	"	U

Surrogate: o-Terphenyl	84.2 %	50-150			"	"	"	
------------------------	--------	--------	--	--	---	---	---	--

GBTEX+TMBs by 8260D

1,2,4-Trimethylbenzene	ND	0.00200	mg/kg	1	B2H3123	08/31/2022	09/05/2022	U
1,3,5-Trimethylbenzene	ND	0.00200	"	"	"	"	"	U
Benzene	ND	0.00200	"	"	"	"	"	U
Ethylbenzene	ND	0.00200	"	"	"	"	"	U
Toluene	ND	0.00200	"	"	"	"	"	U
Xylenes, total	ND	0.00200	"	"	"	"	"	U
Gasoline Range Hydrocarbons	ND	0.200	"	"	"	"	"	U

Surrogate: 1,2-Dichloroethane-d4	97.7 %	70-130			"	"	"	
----------------------------------	--------	--------	--	--	---	---	---	--

Origins Laboratory, Inc.



The results in this report apply to the samples analyzed in accordance with the chain of custody document. This analytical report must be reproduced in its entirety.

Eagle Environmental Consulting, Inc.
8000 W 44th Ave
Wheat Ridge CO 80033

Martin C Eckert III
Project Number: [none]
Project: Noble - Baker State B #36-12

WH-SS-03@5'

8/30/2022 8:35:00AM

Analyte	Result	Min Detection Limit	Reporting Limit	Units	Dilution	Batch	Prepared	Analyzed	Notes
---------	--------	---------------------	-----------------	-------	----------	-------	----------	----------	-------

Origins Laboratory, Inc.
Y208696-03 (Soil)

GBTEX+TMBs by 8260D

Surrogate: Toluene-d8	94.7 %	70-130	B2H31 23	08/31/2022	09/05/2022
Surrogate: 4-Bromofluorobenzene	92.0 %	70-130	"	"	"

Metals by Saturated Paste by EPA 6010

Calcium	4.82	0.499	meq/L	10	[CALC]	08/31/2022	09/01/2022
Magnesium	2.76	0.823	"	"	"	"	"
Sodium	2.18	0.435	"	"	"	"	"

PAH by 8270D SIM

1-Methylnaphthalene	0.000404	0.000364	0.00067	mg/Kg	1	L635406	09/01/2022	09/01/2022	J
2-Methylnaphthalene	0.000895	0.000645	0.00067	"	"	"	"	"	
Acenaphthene	ND	0.000304	0.00067	"	"	"	"	"	
Anthracene	ND	0.000334	0.00067	"	"	"	"	"	
Benzo(a)anthracene	ND	0.000493	0.00067	"	"	"	"	"	
Benzo(a)pyrene	0.00101	0.000468	0.00067	"	"	"	"	"	
Benzo(b)fluoranthene	0.000996	0.000585	0.00067	"	"	"	"	"	
Benzo(k)fluoranthene	ND	0.000437	0.00067	"	"	"	"	"	
Chrysene	0.000678	0.000624	0.00067	"	"	"	"	"	
Dibenz(a,h)anthracene	ND	0.000614	0.00067	"	"	"	"	"	
Fluoranthene	0.000825	0.000394	0.00067	"	"	"	"	"	
Fluorene	0.000322	0.000286	0.00067	"	"	"	"	"	J

Origins Laboratory, Inc.



The results in this report apply to the samples analyzed in accordance with the chain of custody document. This analytical report must be reproduced in its entirety.

Eagle Environmental Consulting, Inc.
8000 W 44th Ave
Wheat Ridge CO 80033

Martin C Eckert III
Project Number: [none]
Project: Noble - Baker State B #36-12

WH-SS-03@5'

8/30/2022 8:35:00AM

Analyte	Result	Min Detection Limit	Reporting Limit	Units	Dilution	Batch	Prepared	Analyzed	Notes
---------	--------	---------------------	-----------------	-------	----------	-------	----------	----------	-------

Waypoint Analytical, LLC.
Y208696-03 (Soil)

PAH by 8270D SIM

Indeno(1,2,3-cd)pyrene	ND	0.000627	0.00067	mg/Kg	1	L635406	09/01/2022	09/01/2022
Naphthalene	ND	0.000484	0.00067	"	"	"	"	"
Pyrene	0.000879	0.000643	0.00067	"	"	"	"	"

Surrogate: 2-Fluorobiphenyl	53.5 %		33-115			"	"	"
Surrogate: 4-Terphenyl-d14	62.5 %		33-122			"	"	"
Surrogate: Nitrobenzene-d5	55.3 %		29-110			"	"	"

pH in Soil by 9045D

pH	8.07			pH Units	1	B2H3108	08/31/2022	09/01/2022
----	------	--	--	----------	---	---------	------------	------------

SAR by 20B Saturated Paste

SAR	1.12			SAR	1	B2H3102	08/31/2022	09/01/2022
-----	------	--	--	-----	---	---------	------------	------------

Specific Conductance Mod. 9050A

Specific Conductance (EC)	1.15		0.00500	mmhos/cm	1	B2H3108	08/31/2022	09/01/2022
---------------------------	------	--	---------	----------	---	---------	------------	------------

Origins Laboratory, Inc.



The results in this report apply to the samples analyzed in accordance with the chain of custody document. This analytical report must be reproduced in its entirety.

Eagle Environmental Consulting, Inc.
8000 W 44th Ave
Wheat Ridge CO 80033

Martin C Eckert III
Project Number: [none]
Project: Noble - Baker State B #36-12

WH-SS-04@5'

8/30/2022 8:36:00AM

Analyte	Result	Min Detection Limit	Reporting Limit	Units	Dilution	Batch	Prepared	Analyzed	Notes
---------	--------	---------------------	-----------------	-------	----------	-------	----------	----------	-------

Origins Laboratory, Inc.
Y208696-04 (Soil)

Boron (DTPA Sorbitol)

Boron	0.435	0.101	mg/L	1	B2H3105	08/31/2022	09/01/2022	
-------	-------	-------	------	---	---------	------------	------------	--

DRO/ORO by EPA 8015D

Diesel (C10-C28)	ND	25.0	mg/kg	1	B2H3015	08/30/2022	09/14/2022	B, U
Residual Range Organics (C28-C40)	ND	100	"	"	"	"	"	U

Surrogate: o-Terphenyl	82.3 %	50-150			"	"	"	
------------------------	--------	--------	--	--	---	---	---	--

GBTEX+TMBs by 8260D

1,2,4-Trimethylbenzene	ND	0.00200	mg/kg	1	B2H3123	08/31/2022	09/05/2022	U
1,3,5-Trimethylbenzene	ND	0.00200	"	"	"	"	"	U
Benzene	ND	0.00200	"	"	"	"	"	U
Ethylbenzene	ND	0.00200	"	"	"	"	"	U
Toluene	ND	0.00200	"	"	"	"	"	U
Xylenes, total	ND	0.00200	"	"	"	"	"	U
Gasoline Range Hydrocarbons	ND	0.200	"	"	"	"	"	U

Surrogate: 1,2-Dichloroethane-d4	99.4 %	70-130			"	"	"	
----------------------------------	--------	--------	--	--	---	---	---	--

Origins Laboratory, Inc.



The results in this report apply to the samples analyzed in accordance with the chain of custody document. This analytical report must be reproduced in its entirety.

Eagle Environmental Consulting, Inc.
8000 W 44th Ave
Wheat Ridge CO 80033

Martin C Eckert III
Project Number: [none]
Project: Noble - Baker State B #36-12

WH-SS-04@5'

8/30/2022 8:36:00AM

Analyte	Result	Min Detection Limit	Reporting Limit	Units	Dilution	Batch	Prepared	Analyzed	Notes
---------	--------	---------------------	-----------------	-------	----------	-------	----------	----------	-------

Origins Laboratory, Inc.
Y208696-04 (Soil)

GBTEX+TMBs by 8260D

Surrogate: Toluene-d8	92.4 %	70-130	B2H31 23	08/31/2022	09/05/2022
Surrogate: 4-Bromofluorobenzene	95.0 %	70-130	"	"	"

Metals by Saturated Paste by EPA 6010

Calcium	7.38	0.499	meq/L	10	[CALC]	08/31/2022	09/01/2022
Magnesium	4.46	0.823	"	"	"	"	"
Sodium	5.04	0.435	"	"	"	"	"

PAH by 8270D SIM

1-Methylnaphthalene	ND	0.000364	0.00067	mg/Kg	1	L635406	09/01/2022	09/01/2022
2-Methylnaphthalene	ND	0.000645	0.00067	"	"	"	"	"
Acenaphthene	ND	0.000304	0.00067	"	"	"	"	"
Anthracene	ND	0.000334	0.00067	"	"	"	"	"
Benzo(a)anthracene	ND	0.000493	0.00067	"	"	"	"	"
Benzo(a)pyrene	ND	0.000468	0.00067	"	"	"	"	"
Benzo(b)fluoranthene	ND	0.000585	0.00067	"	"	"	"	"
Benzo(k)fluoranthene	ND	0.000437	0.00067	"	"	"	"	"
Chrysene	ND	0.000624	0.00067	"	"	"	"	"
Dibenz(a,h)anthracene	ND	0.000614	0.00067	"	"	"	"	"
Fluoranthene	ND	0.000394	0.00067	"	"	"	"	"

Origins Laboratory, Inc.



The results in this report apply to the samples analyzed in accordance with the chain of custody document. This analytical report must be reproduced in its entirety.

Eagle Environmental Consulting, Inc.
8000 W 44th Ave
Wheat Ridge CO 80033

Martin C Eckert III
Project Number: [none]
Project: Noble - Baker State B #36-12

WH-SS-04@5'

8/30/2022 8:36:00AM

Analyte	Result	Min Detection Limit	Reporting Limit	Units	Dilution	Batch	Prepared	Analyzed	Notes
---------	--------	---------------------	-----------------	-------	----------	-------	----------	----------	-------

Waypoint Analytical, LLC.
Y208696-04 (Soil)

PAH by 8270D SIM

Fluorene	ND	0.000286	0.00067	mg/Kg	1	L635406	09/01/2022	09/01/2022
Indeno(1,2,3-cd)pyrene	ND	0.000627	0.00067	"	"	"	"	"
Naphthalene	ND	0.000484	0.00067	"	"	"	"	"
Pyrene	ND	0.000643	0.00067	"	"	"	"	"

Surrogate: 2-Fluorobiphenyl	57 %	33-115	"	"	"
Surrogate: 4-Terphenyl-d14	65.5 %	33-122	"	"	"
Surrogate: Nitrobenzene-d5	58.8 %	29-110	"	"	"

pH in Soil by 9045D

pH	8.02	pH Units	1	B2H3108	08/31/2022	09/01/2022
----	------	----------	---	---------	------------	------------

SAR by 20B Saturated Paste

SAR	2.07	SAR	1	B2H3102	08/31/2022	09/01/2022
-----	------	-----	---	---------	------------	------------

Specific Conductance Mod. 9050A

Specific Conductance (EC)	1.63	0.00500	mmhos/cm	1	B2H3108	08/31/2022	09/01/2022
---------------------------	------	---------	----------	---	---------	------------	------------

Origins Laboratory, Inc.



The results in this report apply to the samples analyzed in accordance with the chain of custody document. This analytical report must be reproduced in its entirety.

Eagle Environmental Consulting, Inc.
8000 W 44th Ave
Wheat Ridge CO 80033

Martin C Eckert III
Project Number: [none]
Project: Noble - Baker State B #36-12

WH-FS-01@6'

8/30/2022 8:37:00AM

Analyte	Result	Min Detection Limit	Reporting Limit	Units	Dilution	Batch	Prepared	Analyzed	Notes
---------	--------	---------------------	-----------------	-------	----------	-------	----------	----------	-------

Origins Laboratory, Inc.
Y208696-05 (Soil)

Boron (DTPA Sorbitol)

Boron	0.570	0.0988	mg/L	1	B2H3105	08/31/2022	09/01/2022	
-------	-------	--------	------	---	---------	------------	------------	--

DRO/ORO by EPA 8015D

Diesel (C10-C28)	ND	25.0	mg/kg	1	B2H3015	08/30/2022	09/14/2022	B, U
Residual Range Organics (C28-C40)	ND	100	"	"	"	"	"	U

Surrogate: o-Terphenyl	80.1 %	50-150	"	"	"	"	"	"
------------------------	--------	--------	---	---	---	---	---	---

GBTEX+TMBs by 8260D

1,2,4-Trimethylbenzene	ND	0.00200	mg/kg	1	B2H3123	08/31/2022	09/05/2022	U
1,3,5-Trimethylbenzene	ND	0.00200	"	"	"	"	"	U
Benzene	ND	0.00200	"	"	"	"	"	U
Ethylbenzene	ND	0.00200	"	"	"	"	"	U
Toluene	ND	0.00200	"	"	"	"	"	U
Xylenes, total	ND	0.00200	"	"	"	"	"	U
Gasoline Range Hydrocarbons	ND	0.200	"	"	"	"	"	U

Surrogate: 1,2-Dichloroethane-d4	97.9 %	70-130	"	"	"	"	"	"
----------------------------------	--------	--------	---	---	---	---	---	---

Origins Laboratory, Inc.



The results in this report apply to the samples analyzed in accordance with the chain of custody document. This analytical report must be reproduced in its entirety.

Eagle Environmental Consulting, Inc.
8000 W 44th Ave
Wheat Ridge CO 80033

Martin C Eckert III
Project Number: [none]
Project: Noble - Baker State B #36-12

WH-FS-01@6'

8/30/2022 8:37:00AM

Analyte	Result	Min Detection Limit	Reporting Limit	Units	Dilution	Batch	Prepared	Analyzed	Notes
---------	--------	---------------------	-----------------	-------	----------	-------	----------	----------	-------

Origins Laboratory, Inc.
Y208696-05 (Soil)

GBTEX+TMBs by 8260D

Surrogate: Toluene-d8	92.9 %	70-130	B2H31 23	08/31/2022	09/05/2022
Surrogate: 4-Bromofluorobenzene	95.6 %	70-130	"	"	"

Metals by Saturated Paste by EPA 6010

Calcium	11.2	0.499	meq/L	10	[CALC]	08/31/2022	09/01/2022
Magnesium	9.85	0.823	"	"	"	"	"
Sodium	7.85	0.435	"	"	"	"	"

PAH by 8270D SIM

1-Methylnaphthalene	0.00169	0.000364	0.00067	mg/Kg	1	L635406	09/01/2022	09/01/2022
2-Methylnaphthalene	0.002	0.000645	0.00067	"	"	"	"	"
Acenaphthene	0.000602	0.000304	0.00067	"	"	"	"	J
Anthracene	ND	0.000334	0.00067	"	"	"	"	"
Benzo(a)anthracene	ND	0.000493	0.00067	"	"	"	"	"
Benzo(a)pyrene	0.000879	0.000468	0.00067	"	"	"	"	"
Benzo(b)fluoranthene	0.000925	0.000585	0.00067	"	"	"	"	"
Benzo(k)fluoranthene	ND	0.000437	0.00067	"	"	"	"	"
Chrysene	0.00135	0.000624	0.00067	"	"	"	"	"
Dibenz(a,h)anthracene	ND	0.000614	0.00067	"	"	"	"	"
Fluoranthene	0.000932	0.000394	0.00067	"	"	"	"	"
Fluorene	0.000583	0.000286	0.00067	"	"	"	"	J

Origins Laboratory, Inc.



The results in this report apply to the samples analyzed in accordance with the chain of custody document. This analytical report must be reproduced in its entirety.

Eagle Environmental Consulting, Inc.
8000 W 44th Ave
Wheat Ridge CO 80033

Martin C Eckert III
Project Number: [none]
Project: Noble - Baker State B #36-12

WH-FS-01@6'

8/30/2022 8:37:00AM

Analyte	Result	Min Detection Limit	Reporting Limit	Units	Dilution	Batch	Prepared	Analyzed	Notes
---------	--------	---------------------	-----------------	-------	----------	-------	----------	----------	-------

Waypoint Analytical, LLC.
Y208696-05 (Soil)

PAH by 8270D SIM

Indeno(1,2,3-cd)pyrene	0.000673	0.000627	0.00067	mg/Kg	1	L635406	09/01/2022	09/01/2022	
Naphthalene	ND	0.000484	0.00067	"	"	"	"	"	
Pyrene	0.00246	0.000643	0.00067	"	"	"	"	"	

Surrogate: 2-Fluorobiphenyl	55.9 %		33-115			"	"	"	
Surrogate: 4-Terphenyl-d14	59.8 %		33-122			"	"	"	
Surrogate: Nitrobenzene-d5	59.8 %		29-110			"	"	"	

pH in Soil by 9045D

pH	7.93			pH Units	1	B2H3108	08/31/2022	09/01/2022	
----	------	--	--	----------	---	---------	------------	------------	--

SAR by 20B Saturated Paste

SAR	2.42			SAR	1	B2H3102	08/31/2022	09/01/2022	
-----	------	--	--	-----	---	---------	------------	------------	--

Specific Conductance Mod. 9050A

Specific Conductance (EC)	2.53		0.00500	mmhos/cm	1	B2H3108	08/31/2022	09/01/2022	
---------------------------	------	--	---------	----------	---	---------	------------	------------	--

Origins Laboratory, Inc.



The results in this report apply to the samples analyzed in accordance with the chain of custody document. This analytical report must be reproduced in its entirety.

Eagle Environmental Consulting, Inc.
8000 W 44th Ave
Wheat Ridge CO 80033

Martin C Eckert III
Project Number: [none]
Project: Noble - Baker State B #36-12

Extractable Petroleum Hydrocarbons by 8015D - Quality Control
Origins Laboratory, Inc.

Analyte	Result	Reporting Limit	Units	Spike Level	Source Result	%REC	%REC Limits	RPD	RPD Limit	Notes
Batch B2H3015 - EPA 3550B										
Blank (B2H3015-BLK1)					Prepared: 08/30/2022 Analyzed: 09/03/2022					
Diesel (C10-C28)	38.9	25.0	mg/kg							B
Residual Range Organics (C28-C40)	ND	100	"							U
Surrogate: o-Terphenyl	29		"	24.9		117	50-150			

Origins Laboratory, Inc.



The results in this report apply to the samples analyzed in accordance with the chain of custody document. This analytical report must be reproduced in its entirety.

Eagle Environmental Consulting, Inc.
8000 W 44th Ave
Wheat Ridge CO 80033

Martin C Eckert III
Project Number: [none]
Project: Noble - Baker State B #36-12

Extractable Petroleum Hydrocarbons by 8015D - Quality Control
Origins Laboratory, Inc.

Analyte	Result	Reporting Limit	Units	Spike Level	Source Result	%REC	%REC Limits	RPD	RPD Limit	Notes
---------	--------	-----------------	-------	-------------	---------------	------	-------------	-----	-----------	-------

Batch B2H3015 - EPA 3550B

LCS (B2H3015-BS1)

Prepared: 08/30/2022 Analyzed: 09/03/2022

Diesel (C10-C28)	513	25.0	mg/kg	500		103	70-130			
Residual Range Organics (C28-C40)	525	100	"	500		105	70-130			
Surrogate: o-Terphenyl	32		"	24.9		129	50-150			

Origins Laboratory, Inc.



The results in this report apply to the samples analyzed in accordance with the chain of custody document. This analytical report must be reproduced in its entirety.

Eagle Environmental Consulting, Inc.
8000 W 44th Ave
Wheat Ridge CO 80033

Martin C Eckert III
Project Number: [none]
Project: Noble - Baker State B #36-12

Extractable Petroleum Hydrocarbons by 8015D - Quality Control
Origins Laboratory, Inc.

Analyte	Result	Reporting Limit	Units	Spike Level	Source Result	%REC	%REC Limits	RPD	RPD Limit	Notes
---------	--------	-----------------	-------	-------------	---------------	------	-------------	-----	-----------	-------

Batch B2H3015 - EPA 3550B

Matrix Spike (B2H3015-MS1)		Source: Y208663-01			Prepared: 08/30/2022 Analyzed: 09/03/2022					
Diesel (C10-C28)	606	25.0	mg/kg	500	88.2	104	70-130			
Residual Range Organics (C28-C40)	427	100	"	500	50.9	75.2	70-130			
Surrogate: o-Terphenyl	24		"	24.9		97.3	50-150			

Origins Laboratory, Inc.



The results in this report apply to the samples analyzed in accordance with the chain of custody document. This analytical report must be reproduced in its entirety.

Eagle Environmental Consulting, Inc.
8000 W 44th Ave
Wheat Ridge CO 80033

Martin C Eckert III
Project Number: [none]
Project: Noble - Baker State B #36-12

Extractable Petroleum Hydrocarbons by 8015D - Quality Control Origins Laboratory, Inc.

Analyte	Result	Reporting Limit	Units	Spike Level	Source Result	%REC	%REC Limits	RPD	RPD Limit	Notes
Batch B2H3015 - EPA 3550B										
Matrix Spike Dup (B2H3015-MSD1)		Source: Y208663-01			Prepared: 08/30/2022 Analyzed: 09/03/2022					
Diesel (C10-C28)	646	25.0	mg/kg	500	88.2	112	70-130	6.42	35	
Residual Range Organics (C28-C40)	479	100	"	500	50.9	85.6	70-130	11.4	35	
Surrogate: o-Terphenyl	27		"	24.9		107	50-150			

Origins Laboratory, Inc.



The results in this report apply to the samples analyzed in accordance with the chain of custody document. This analytical report must be reproduced in its entirety.

Eagle Environmental Consulting, Inc.
8000 W 44th Ave
Wheat Ridge CO 80033

Martin C Eckert III
Project Number: [none]
Project: Noble - Baker State B #36-12

Extractable Petroleum Hydrocarbons by 8015D - Quality Control

Origins Laboratory, Inc.

Analyte	Result	Reporting Limit	Units	Spike Level	Source Result	%REC	%REC Limits	RPD	RPD Limit	Notes
Batch B2H3123 - EPA 5030 (soil)										
Blank (B2H3123-BLK1)					Prepared: 08/31/2022 Analyzed: 09/04/2022					
1,2,4-Trimethylbenzene	ND	0.00200	mg/kg							U
1,3,5-Trimethylbenzene	ND	0.00200	"							U
Benzene	ND	0.00200	"							U
Ethylbenzene	ND	0.00200	"							U
Naphthalene	ND	0.00380	"							U
Toluene	ND	0.00200	"							U
Xylenes, total	ND	0.00200	"							U
Gasoline Range Hydrocarbons	ND	0.200	"							U
Surrogate: 1,2-Dichloroethane-d4	0.11		"	0.125		90.2	70-130			
Surrogate: Toluene-d8	0.12		"	0.125		99.3	70-130			
Surrogate: 4-Bromofluorobenzene	0.12		"	0.125		92.7	70-130			

Origins Laboratory, Inc.



The results in this report apply to the samples analyzed in accordance with the chain of custody document. This analytical report must be reproduced in its entirety.

Eagle Environmental Consulting, Inc.
8000 W 44th Ave
Wheat Ridge CO 80033

Martin C Eckert III
Project Number: [none]
Project: Noble - Baker State B #36-12

Volatile Organic Compounds by GC/MS SW846 8260D - Quality Control
Origins Laboratory, Inc.

Analyte	Result	Reporting Limit	Units	Spike Level	Source Result	%REC	%REC Limits	RPD	RPD Limit	Notes
---------	--------	-----------------	-------	-------------	---------------	------	-------------	-----	-----------	-------

Batch B2H3123 - EPA 5030 (soil)

LCS (B2H3123-BS1)

Prepared: 08/31/2022 Analyzed: 09/04/2022

1,2,4-Trimethylbenzene	0.107	0.00200	mg/kg	0.100		107	70-130			
1,3,5-Trimethylbenzene	0.110	0.00200	"	0.100		110	70-130			
Benzene	0.103	0.00200	"	0.100		103	70-130			
Ethylbenzene	0.111	0.00200	"	0.100		111	70-130			
Naphthalene	0.0969	0.00380	"	0.100		96.9	70-130			
Toluene	0.0997	0.00200	"	0.100		99.7	70-130			
o-Xylene	0.109	0.00200	"	0.100		109	70-130			
m,p-Xylene	0.223	0.00400	"	0.200		112	70-130			
Surrogate: 1,2-Dichloroethane-d4	0.11		"	0.125		90.5	70-130			
Surrogate: Toluene-d8	0.12		"	0.125		94.1	70-130			
Surrogate: 4-Bromofluorobenzene	0.13		"	0.125		107	70-130			

Origins Laboratory, Inc.



The results in this report apply to the samples analyzed in accordance with the chain of custody document. This analytical report must be reproduced in its entirety.

Eagle Environmental Consulting, Inc.
8000 W 44th Ave
Wheat Ridge CO 80033

Martin C Eckert III
Project Number: [none]
Project: Noble - Baker State B #36-12

Volatile Organic Compounds by GC/MS SW846 8260D - Quality Control
Origins Laboratory, Inc.

Analyte	Result	Reporting Limit	Units	Spike Level	Source Result	%REC	%REC Limits	RPD	RPD Limit	Notes
Batch B2H3123 - EPA 5030 (soil)										
Matrix Spike (B2H3123-MS1)		Source: Y208677-01			Prepared: 08/31/2022 Analyzed: 09/04/2022					
1,2,4-Trimethylbenzene	0.0776	0.00200	mg/kg	0.100	0.000880	76.7	70-130			
1,3,5-Trimethylbenzene	0.0796	0.00200	"	0.100	0.000520	79.0	70-130			
Benzene	0.0784	0.00200	"	0.100	ND	78.4	70-130			
Ethylbenzene	0.0845	0.00200	"	0.100	ND	84.5	70-130			
Naphthalene	0.0615	0.00380	"	0.100	0.00100	60.5	70-130			QM-07
Toluene	0.0752	0.00200	"	0.100	ND	75.2	70-130			
o-Xylene	0.0825	0.00200	"	0.100	0.000520	82.0	70-130			
m,p-Xylene	0.171	0.00400	"	0.200	0.00148	84.7	70-130			
Surrogate: 1,2-Dichloroethane-d4	0.11		"	0.125		85.8	70-130			
Surrogate: Toluene-d8	0.12		"	0.125		94.2	70-130			
Surrogate: 4-Bromofluorobenzene	0.13		"	0.125		106	70-130			

Origins Laboratory, Inc.



The results in this report apply to the samples analyzed in accordance with the chain of custody document. This analytical report must be reproduced in its entirety.

Eagle Environmental Consulting, Inc.
8000 W 44th Ave
Wheat Ridge CO 80033

Martin C Eckert III
Project Number: [none]
Project: Noble - Baker State B #36-12

Volatile Organic Compounds by GC/MS SW846 8260D - Quality Control

Origins Laboratory, Inc.

Analyte	Result	Reporting Limit	Units	Spike Level	Source Result	%REC	%REC Limits	RPD	RPD Limit	Notes
Batch B2H3123 - EPA 5030 (soil)										
Matrix Spike Dup (B2H3123-MSD1)		Source: Y208677-01			Prepared: 08/31/2022 Analyzed: 09/04/2022					
1,2,4-Trimethylbenzene	0.0807	0.00200	mg/kg	0.100	0.000880	79.8	70-130	3.94	20	
1,3,5-Trimethylbenzene	0.0808	0.00200	"	0.100	0.000520	80.3	70-130	1.55	20	
Benzene	0.0832	0.00200	"	0.100	ND	83.2	70-130	5.84	20	
Ethylbenzene	0.0822	0.00200	"	0.100	ND	82.2	70-130	2.81	20	
Naphthalene	0.0727	0.00380	"	0.100	0.00100	71.7	70-130	16.8	20	
Toluene	0.0800	0.00200	"	0.100	ND	80.0	70-130	6.21	20	
o-Xylene	0.0825	0.00200	"	0.100	0.000520	82.0	70-130	0.0242	20	
m,p-Xylene	0.166	0.00400	"	0.200	0.00148	82.3	70-130	2.85	20	
Surrogate: 1,2-Dichloroethane-d4	0.11		"	0.125		87.5	70-130			
Surrogate: Toluene-d8	0.12		"	0.125		93.9	70-130			
Surrogate: 4-Bromofluorobenzene	0.13		"	0.125		103	70-130			

Origins Laboratory, Inc.



The results in this report apply to the samples analyzed in accordance with the chain of custody document. This analytical report must be reproduced in its entirety.

Eagle Environmental Consulting, Inc.
8000 W 44th Ave
Wheat Ridge CO 80033

Martin C Eckert III
Project Number: [none]
Project: Noble - Baker State B #36-12

Volatile Organic Compounds by GC/MS SW846 8260D - Quality Control
Origins Laboratory, Inc.

Analyte	Result	Reporting Limit	Units	Spike Level	Source Result	%REC	%REC Limits	RPD	RPD Limit	Notes
---------	--------	-----------------	-------	-------------	---------------	------	-------------	-----	-----------	-------

***** DEFAULT GENERAL METHOD *** - Quality Control**
Origins Laboratory, Inc.

Analyte	Result	Reporting Limit	Units	Spike Level	Source Result	%REC	%REC Limits	RPD	RPD Limit	Notes
---------	--------	-----------------	-------	-------------	---------------	------	-------------	-----	-----------	-------

Batch B2I2102 - Default Prep Metals

Blank (B2I2102-BLK1)

Prepared: 09/21/2022 Analyzed: 09/23/2022

Arsenic	ND	0.000100	mg/kg
Barium	ND	0.0100	"
Cadmium	ND	0.000100	"
Copper	ND	0.0100	"
Lead	ND	0.0100	"
Nickel	ND	0.0100	"
Selenium	ND	0.000100	"
Silver	ND	0.000100	"
Zinc	ND	0.100	"

LCS (B2I2102-BS1)

Prepared: 09/21/2022 Analyzed: 09/22/2022

Arsenic	0.0499	0.000100	mg/kg	0.0500	99.7	80-120
Barium	5.15	0.0100	"	5.00	103	80-120
Cadmium	0.0535	0.000100	"	0.0500	107	80-120
Copper	0.532	0.0100	"	0.500	106	80-120
Lead	0.0530	0.0100	"	0.0500	106	80-120
Nickel	0.0538	0.0100	"	0.0500	108	80-120
Selenium	0.0497	0.000100	"	0.0500	99.4	80-120
Silver	0.0472	0.000100	"	0.0500	94.5	80-120
Zinc	0.543	0.100	"	0.500	109	80-120

Matrix Spike (B2I2102-MS1)

Source: Y209243-02

Prepared: 09/21/2022 Analyzed: 09/22/2022

Origins Laboratory, Inc.



The results in this report apply to the samples analyzed in accordance with the chain of custody document. This analytical report must be reproduced in its entirety.

Eagle Environmental Consulting, Inc.
8000 W 44th Ave
Wheat Ridge CO 80033

Martin C Eckert III
Project Number: [none]
Project: Noble - Baker State B #36-12

*** DEFAULT GENERAL METHOD *** - Quality Control
Origins Laboratory, Inc.

Analyte	Result	Reporting Limit	Units	Spike Level	Source Result	%REC	%REC Limits	RPD	RPD Limit	Notes
---------	--------	-----------------	-------	-------------	---------------	------	-------------	-----	-----------	-------

Batch B2I2102 - Default Prep Metals

Matrix Spike (B2I2102-MS1)		Source: Y209243-02			Prepared: 09/21/2022 Analyzed: 09/22/2022					
Arsenic	7.94	0.0949	mg/kg	4.75	2.03	124	75-125			
Barium	622	9.49	"	475	41.1	122	75-125			
Cadmium	5.99	0.0949	"	4.75	0.131	124	75-125			
Copper	64.3	9.49	"	47.5	6.75	121	75-125			
Lead	14.0	9.49	"	4.75	6.43	159	75-125			
Nickel	13.1	9.49	"	4.75	5.97	151	75-125			
Selenium	5.16	0.0949	"	4.75	0.116	106	75-125			
Silver	5.21	0.0949	"	4.75	0.0253	109	75-125			
Zinc	89.0	94.9	"	47.5	24.1	137	75-125			
Matrix Spike Dup (B2I2102-MSD1)		Source: Y209243-02			Prepared: 09/21/2022 Analyzed: 09/22/2022					
Arsenic	6.73	0.0949	mg/kg	4.75	2.03	99.0	75-125	16.4	20	
Barium	563	9.49	"	475	41.1	110	75-125	10.1	20	
Cadmium	5.39	0.0949	"	4.75	0.131	111	75-125	10.6	20	
Copper	56.9	9.49	"	47.5	6.75	106	75-125	12.1	20	
Lead	11.7	9.49	"	4.75	6.43	111	75-125	17.6	20	
Nickel	11.1	9.49	"	4.75	5.97	109	75-125	16.4	20	
Selenium	4.96	0.0949	"	4.75	0.116	102	75-125	4.07	20	
Silver	4.77	0.0949	"	4.75	0.0253	100	75-125	8.70	20	
Zinc	76.2	94.9	"	47.5	24.1	110	75-125	15.6	20	

Origins Laboratory, Inc.



The results in this report apply to the samples analyzed in accordance with the chain of custody document. This analytical report must be reproduced in its entirety.

Eagle Environmental Consulting, Inc.
8000 W 44th Ave
Wheat Ridge CO 80033

Martin C Eckert III
Project Number: [none]
Project: Noble - Baker State B #36-12

Classical Chemistry Parameters - Quality Control

Origins Laboratory, Inc.

Analyte	Result	Reporting Limit	Units	Spike Level	Source Result	%REC	%REC Limits	RPD	RPD Limit	Notes
---------	--------	-----------------	-------	-------------	---------------	------	-------------	-----	-----------	-------

Batch B2H3102 - Default Prep Metals

Blank (B2H3102-BLK1)

Prepared: 08/31/2022 Analyzed: 09/01/2022

SAR	0.00		SAR
Calcium PPM	ND	10.0	mg/L
Magnesium PPM	ND	10.0	"
Sodium PPM	ND	10.0	"

Duplicate (B2H3102-DUP1)

Source: Y208673-03

Prepared: 08/31/2022 Analyzed: 09/01/2022

SAR	0.00		SAR	2.92	200	200
Calcium PPM	22.2	10.0	mg/L	27.6	21.5	50
Magnesium PPM	5.63	10.0	"	6.95	21.0	50
Sodium PPM	55.3	10.0	"	66.2	18.0	50

Batch B2H3105 - Default Prep Metals

Blank (B2H3105-BLK1)

Prepared: 08/31/2022 Analyzed: 09/01/2022

Boron	ND	0.100	mg/L
-------	----	-------	------

Duplicate (B2H3105-DUP1)

Source: Y208673-03

Prepared: 08/31/2022 Analyzed: 09/01/2022

Boron	0.355	0.0989	mg/L	0.206	53.0	50	QR-DUP
-------	-------	--------	------	-------	------	----	--------

Origins Laboratory, Inc.



The results in this report apply to the samples analyzed in accordance with the chain of custody document. This analytical report must be reproduced in its entirety.

Eagle Environmental Consulting, Inc.
8000 W 44th Ave
Wheat Ridge CO 80033

Martin C Eckert III
Project Number: [none]
Project: Noble - Baker State B #36-12

Saturated Paste - Quality Control Origins Laboratory, Inc.

Analyte	Result	Reporting Limit	Units	Spike Level	Source Result	%REC	%REC Limits	RPD	RPD Limit	Notes
Batch B2H3108 - NO PREP										
Blank (B2H3108-BLK1)					Prepared: 08/31/2022 Analyzed: 09/01/2022					
Specific Conductance (EC)	ND	0.00500	mmhos/cm							
pH	0.00		pH Units							
Duplicate (B2H3108-DUP1)					Source: Y208673-03 Prepared: 08/31/2022 Analyzed: 09/01/2022					
pH	8.11		pH Units		7.93			2.24	25	
Specific Conductance (EC)	0.429	0.00500	mmhos/cm		0.520			19.1	25	

Origins Laboratory, Inc.



The results in this report apply to the samples analyzed in accordance with the chain of custody document. This analytical report must be reproduced in its entirety.

Eagle Environmental Consulting, Inc.
8000 W 44th Ave
Wheat Ridge CO 80033

Martin C Eckert III
Project Number: [none]
Project: Noble - Baker State B #36-12

Total Metals by 7196A - Quality Control Waypoint Analytical, LLC.

Analyte	Result	Reporting Limit	Units	Spike Level	Source Result	%REC	%REC Limits	RPD	RPD Limit	Notes
Batch L639520 -										
DUP (L 86483-DUP)		Source: 86483			Prepared: Analyzed: 09/26/2022					
Chromium, Hexavalent	ND	0.5	mg/Kg		<0.500	-		0	20	
MS (L 86483-MS)		Source: 86483			Prepared: Analyzed: 09/26/2022					
Chromium, Hexavalent	31.9	2.5	mg/Kg	39.4	< 0.244	81	75-125			
MSD (L 86483-MSD)		Source: 86483			Prepared: Analyzed: 09/26/2022					
Chromium, Hexavalent	601	50	mg/Kg	694	<24.4	87	75-125			
LCS (LCS)					Prepared: Analyzed: 09/26/2022					
Chromium, Hexavalent	7.65	0.5	mg/Kg	8		96	75-125			
LRB (LRB)					Prepared: Analyzed: 09/26/2022					
Chromium, Hexavalent	ND	0.5	mg/Kg							

Origins Laboratory, Inc.



The results in this report apply to the samples analyzed in accordance with the chain of custody document. This analytical report must be reproduced in its entirety.

Eagle Environmental Consulting, Inc.
8000 W 44th Ave
Wheat Ridge CO 80033

Martin C Eckert III
Project Number: [none]
Project: Noble - Baker State B #36-12

PAH by 8270D SIM - Quality Control
Waypoint Analytical, LLC.

Analyte	Result	Reporting Limit	Units	Spike Level	Source Result	%REC	%REC Limits	RPD	RPD Limit	Notes
---------	--------	-----------------	-------	-------------	---------------	------	-------------	-----	-----------	-------

Batch L635406 - 3550B

MSD (L 83369-MSD-L635406)		Source: 83369			Prepared: 09/01/2022 Analyzed: 09/01/2022					
Pyrene	0.133	0.000643	mg/Kg	0.164	<0.000643	81	30-130	0.7	30	
Benzo(b)fluoranthene	0.127	0.000585	"	0.164	<0.000585	77.4	30-130	9.7	30	
Benzo(a)pyrene	0.139	0.000468	"	0.164	<0.000468	84.7	30-130	0	30	
1-Methylnaphthalene	0.154	0.000364	"	0.164	0.0435	67.3	30-130	9.2	30	
2-Methylnaphthalene	0.186	0.000645	"	0.164	0.0879	59.8	30-130	11.1	30	
Acenaphthene	0.112	0.000304	"	0.164	0.00739	63.7	30-130	0.8	30	
Chrysene	0.128	0.000624	"	0.164	<0.000624	78	30-130	1.5	30	
Benzo(a)anthracene	0.125	0.000493	"	0.164	<0.000493	76.2	30-130	1.6	30	
Benzo(k)fluoranthene	0.133	0.000437	"	0.164	<0.000437	81	30-130	3.8	30	
Dibenz(a,h)anthracene	0.146	0.000614	"	0.164	<0.000614	89	30-130	4	30	
Fluoranthene	0.067	0.000394	"	0.164	<0.000394	40.8	30-130	0	30	
Fluorene	0.123	0.000286	"	0.164	0.0112	68.1	30-130	3.9	30	
Indeno(1,2,3-cd)pyrene	0.128	0.000627	"	0.164	<0.000627	78	30-130	7.5	30	
Naphthalene	0.121	0.000484	"	0.164	0.011	67	30-130	2.4	30	
Anthracene	0.121	0.000334	"	0.164	<0.000334	73.7	30-130	0.8	30	
Surrogate: 2-Fluorobiphenyl	65		"	0.329	212	65	33-115			
Surrogate: 4-Terphenyl-d14	75		"	0.329	229	75	33-122			
Surrogate: Nitrobenzene-d5	60.4		"	0.329	200	60.4	29-110			

MS (L 83369-MS-L635406)		Source: 83369			Prepared: 09/01/2022 Analyzed: 09/01/2022					
Pyrene	0.134	0.000643	mg/Kg	0.166	<0.000643	80.7	30-130			
Fluoranthene	0.067	0.000394	"	0.166	<0.000394	40.3	30-130			
1-Methylnaphthalene	0.169	0.000364	"	0.166	0.0435	75.6	30-130			
2-Methylnaphthalene	0.208	0.000645	"	0.166	0.0879	72.3	30-130			
Acenaphthene	0.113	0.000304	"	0.166	0.00739	63.6	30-130			
Anthracene	0.122	0.000334	"	0.166	<0.000334	73.4	30-130			
Benzo(a)anthracene	0.123	0.000493	"	0.166	<0.000493	74	30-130			

Origins Laboratory, Inc.



The results in this report apply to the samples analyzed in accordance with the chain of custody document. This analytical report must be reproduced in its entirety.

Eagle Environmental Consulting, Inc.
8000 W 44th Ave
Wheat Ridge CO 80033

Martin C Eckert III
Project Number: [none]
Project: Noble - Baker State B #36-12

PAH by 8270D SIM - Quality Control
Waypoint Analytical, LLC.

Analyte	Result	Reporting Limit	Units	Spike Level	Source Result	%REC	%REC Limits	RPD	RPD Limit	Notes
---------	--------	-----------------	-------	-------------	---------------	------	-------------	-----	-----------	-------

Batch L635406 - 3550B

MS (L 83369-MS-L635406)		Source: 83369			Prepared: 09/01/2022 Analyzed: 09/01/2022					
Benzo(a)pyrene	0.139	0.000468	mg/Kg	0.166	<0.000468	83.7	30-130			
Benzo(b)fluoranthene	0.14	0.000585	"	0.166	<0.000585	84.3	30-130			
Benzo(k)fluoranthene	0.128	0.000437	"	0.166	<0.000437	77.1	30-130			
Chrysene	0.13	0.000624	"	0.166	<0.000624	78.3	30-130			
Dibenz(a,h)anthracene	0.152	0.000614	"	0.166	<0.000614	91.5	30-130			
Naphthalene	0.124	0.000484	"	0.166	0.011	68	30-130			
Indeno(1,2,3-cd)pyrene	0.138	0.000627	"	0.166	<0.000627	83.1	30-130			
Fluorene	0.128	0.000286	"	0.166	0.0112	70.3	30-130			
Surrogate: Nitrobenzene-d5	64		"	0.331	200	64	29-110			
Surrogate: 2-Fluorobiphenyl	70.6		"	0.331	212	70.6	33-115			
Surrogate: 4-Terphenyl-d14	74.9		"	0.331	229	74.9	33-122			

LCS (LCS-L635406)

Prepared: 09/01/2022 Analyzed: 09/01/2022

Anthracene	0.123	0.000334	mg/Kg	0.167		73.6	30-130			
2-Methylnaphthalene	0.106	0.000645	"	0.167		63.4	30-130			
Acenaphthene	0.108	0.000304	"	0.167		64.6	30-130			
Fluoranthene	0.124	0.000394	"	0.167		74.2	30-130			
Benzo(a)anthracene	0.122	0.000493	"	0.167		73	30-130			
Benzo(a)pyrene	0.137	0.000468	"	0.167		82	30-130			
Benzo(b)fluoranthene	0.133	0.000585	"	0.167		79.6	30-130			
Benzo(k)fluoranthene	0.129	0.000437	"	0.167		77.2	30-130			
1-Methylnaphthalene	0.106	0.000364	"	0.167		63.4	30-130			
Pyrene	0.124	0.000643	"	0.167		74.2	30-130			
Chrysene	0.125	0.000624	"	0.167		74.8	30-130			
Indeno(1,2,3-cd)pyrene	0.136	0.000627	"	0.167		81.4	30-130			
Naphthalene	0.103	0.000484	"	0.167		61.6	30-130			
Fluorene	0.115	0.000286	"	0.167		68.8	30-130			

Origins Laboratory, Inc.



The results in this report apply to the samples analyzed in accordance with the chain of custody document. This analytical report must be reproduced in its entirety.

Eagle Environmental Consulting, Inc.
8000 W 44th Ave
Wheat Ridge CO 80033

Martin C Eckert III
Project Number: [none]
Project: Noble - Baker State B #36-12

PAH by 8270D SIM - Quality Control
Waypoint Analytical, LLC.

Analyte	Result	Reporting Limit	Units	Spike Level	Source Result	%REC	%REC Limits	RPD	RPD Limit	Notes
---------	--------	-----------------	-------	-------------	---------------	------	-------------	-----	-----------	-------

Batch L635406 - 3550B

LCS (LCS-L635406)

Prepared: 09/01/2022 Analyzed: 09/01/2022

Dibenz(a,h)anthracene	0.153	0.000614	mg/Kg	0.167		91.6	30-130			
Surrogate: 2-Fluorobiphenyl	64.5		"	0.333	64.5		33-115			
Surrogate: 4-Terphenyl-d14	75		"	0.333	75		33-122			
Surrogate: Nitrobenzene-d5	66.9		"	0.333	66.9		29-110			

LRB (LRB-L635406)

Prepared: 09/01/2022 Analyzed: 09/01/2022

Fluoranthene	ND	0.00067	mg/Kg				-			
Fluorene	ND	0.00067	"				-			
Benzo(k)fluoranthene	ND	0.00067	"				-			
Indeno(1,2,3-cd)pyrene	ND	0.00067	"				-			
Naphthalene	ND	0.00067	"				-			
Chrysene	ND	0.00067	"				-			
Dibenz(a,h)anthracene	ND	0.00067	"				-			
Benzo(b)fluoranthene	ND	0.00067	"				-			
Benzo(a)pyrene	ND	0.00067	"				-			
Pyrene	ND	0.00067	"				-			
Anthracene	ND	0.00067	"				-			
1-Methylnaphthalene	ND	0.00067	"				-			
2-Methylnaphthalene	ND	0.00067	"				-			
Acenaphthene	ND	0.00067	"				-			
Benzo(a)anthracene	ND	0.00067	"				-			
Surrogate: Nitrobenzene-d5	63.3		"	0.333	63.3		29-110			
Surrogate: 2-Fluorobiphenyl	60.3		"	0.333	60.3		33-115			
Surrogate: 4-Terphenyl-d14	66		"	0.333	66		33-122			

Origins Laboratory, Inc.



The results in this report apply to the samples analyzed in accordance with the chain of custody document. This analytical report must be reproduced in its entirety.

Eagle Environmental Consulting, Inc.
8000 W 44th Ave
Wheat Ridge CO 80033

Martin C Eckert III
Project Number: [none]
Project: Noble - Baker State B #36-12

Notes and Definitions

U Sample is Non-Detect.

QR-DUP RPD exceeds QC acceptance criteria, this indicates source sample is not homogenous.

QM-07 The spike recovery was outside acceptance limits for the MS and/or MSD. The batch was accepted based on acceptable LCS recovery.

J Estimated Value. Analyte below reported quantitation limit.

B Analyte is found in the associated blank as well as in the sample (CLP B-flag).

ND Analyte NOT DETECTED at or above the reporting limit

RPD Relative Percent Difference

All soil results are reported on a wet weight basis.

Origins Laboratory, Inc.



The results in this report apply to the samples analyzed in accordance with the chain of custody document. This analytical report must be reproduced in its entirety.



September 27, 2022

Eagle Environmental Consulting, Inc.

Martin C Eckert III

8000 W 44th Ave

Wheat Ridge CO 80033

Project Name - Noble - Baker State B #36-12

Project Number - [none]

Attached are your analytical results for Noble - Baker State B #36-12 received by Origins Laboratory, Inc. September 22, 2022. This project is associated with Origins project number Y209515-01.

The analytical results in the following report were analyzed under the guidelines of EPA Methods. These methods are identified as follows; "SW" are defined in SW-846, "EPA" are defined in 40CFR part 136 and "SM" are defined in the most current revision of Standard Methods For the Examination of Water and Wastewater.

The analytical results apply specifically to the samples and analyses specified per the attached Chain of Custody. As such, this report shall not be reproduced except in full, without the written approval of Origin's laboratory.

Unless otherwise noted, the analytical results for all soil samples are reported on a wet weight basis. All analytical analyses were performed under NELAP guidelines unless noted by a data qualifier.

Any holding time exceedances, deviations from the method specifications or deviations from Origins Laboratory's Standard Operating Procedures are outlined in the case narrative.

Thank you for selecting Origins for your analytical needs. Please contact us with any questions concerning this report, or if we can help with anything at all.

Origins Laboratory, Inc.
303.433.1322
o-squad@oelabinc.com



1725 Elk Place, Denver, CO 80211 | Phone: 303.433.1322 | Fax: 303.265.9645

Eagle Environmental Consulting, Inc.

8000 W 44th Ave

Wheat Ridge CO 80033

Martin C Eckert III

Project Number: [none]

Project: Noble - Baker State B #36-12

CROSS REFERENCE REPORT

Sample ID	Laboratory ID	Matrix	Date Sampled	Date Received
Background-01@2'	Y209515-01	Soil	August 30, 2022 8:38	09/22/2022 15:00

Origins Laboratory, Inc.



The results in this report apply to the samples analyzed in accordance with the chain of custody document. This analytical report must be reproduced in its entirety.

Eagle Environmental Consulting, Inc.

8000 W 44th Ave

Wheat Ridge CO 80033

Martin C Eckert III

Project Number: [none]

Project: Noble - Baker State B #36-12

Origins Laboratory

Sample Receipt Checklist

F-012207-01-R1

Effective Date: 01/09/12

Origins Work Order: Y209015

Client: Eagle/Noble
Client Project ID: Baker State

Checklist Completed by: JB/EHS

Date/time completed: 9-26-22

Shipped Via: HD
(UPS, FedEx, Hand Delivered, Pick-up, etc.)

Airbill #: N/A

Matrix(s) Received: (Check all that apply): ☒ Soil/Solid ☐ Water ☐ Other:

Cooler Number/Temperature: 121 °C 1 °C 1 °C (Describe) °C

Thermometer ID: T603

Requirement Description	Yes	No	N/A	Comments (if any)
If samples require cooling, was the temperature between 0°C to ≤ 6°C ⁽¹⁾ ?	<input checked="" type="checkbox"/>			
Is there ice present (document if blue ice is used)	<input checked="" type="checkbox"/>			
Are custody seals present on cooler? (if so, document in comments if they are signed and dated, broken or intact)	<input checked="" type="checkbox"/>	<input checked="" type="checkbox"/>		
Are custody seals present on each sample container? (if so, document in comments if they are signed and dated, broken or intact)		<input checked="" type="checkbox"/>		
Were all samples received intact ⁽¹⁾ ?	<input checked="" type="checkbox"/>			
Was adequate sample volume provided ⁽¹⁾ ?	<input checked="" type="checkbox"/>			
Are short holding time analytes or samples with HTs due within 48 hours present ⁽¹⁾ ?		<input checked="" type="checkbox"/>		
Is a chain-of-custody (COC) present and filled out completely ⁽¹⁾ ?	<input checked="" type="checkbox"/>			
Does the COC agree with the number and type of sample bottles received ⁽¹⁾ ?	<input checked="" type="checkbox"/>			
Do the sample IDs on the bottle labels match the COC ⁽¹⁾ ?	<input checked="" type="checkbox"/>			
Is the COC properly relinquished by the client with date and time recorded ⁽¹⁾ ?	<input checked="" type="checkbox"/>			
For volatiles in water – is there headspace (> 1/4 inch bubble) present? If yes, contact client and note in narrative.			<input checked="" type="checkbox"/>	
Are samples preserved that require preservation and was it checked ⁽¹⁾ ? (note ID of confirmation instrument used in comments) / (preservation is not confirmed for subcontracted analyses in order to insure sample integrity) (pH < 2 for samples preserved with HNO ₃ , HCL, H ₂ SO ₄) / (pH > 10 for samples preserved with NaAsO ₂ +NaOH, ZnAc+NaOH)			<input checked="" type="checkbox"/>	
Additional Comments (if any):				

⁽¹⁾If NO, then contact the client before proceeding with analysis and note date/time and person contacted as well as the corrective action to in the additional comments (above) and the case narrative.

Reviewed by: JB (Project Manager)

Date/Time Reviewed: 9-26-22

Origins Laboratory, Inc.

J. Bynon

The results in this report apply to the samples analyzed in accordance with the chain of custody document. This analytical report must be reproduced in its entirety.

Eagle Environmental Consulting, Inc.
8000 W 44th Ave
Wheat Ridge CO 80033

Martin C Eckert III
Project Number: [none]
Project: Noble - Baker State B #36-12

Background-01@2'
8/30/2022 8:38:00AM

Analyte	Result	Reporting Limit	Units	Dilution	Batch	Analyst	Prepared	Analyzed	Notes
---------	--------	-----------------	-------	----------	-------	---------	----------	----------	-------

Origins Laboratory, Inc.
Y209515-01 (Soil)

Table 915 metals by EPA 6020B

Arsenic	4.11	0.0983	mg/kg	10	B212311	CNG	09/23/2022	09/24/2022
Barium	191	9.83	"	"	"	CNG	"	"
Cadmium	0.239	0.0983	"	"	"	CNG	"	"
Copper	12.1	9.83	"	"	"	CNG	"	"
Lead	17.5	9.83	"	"	"	CNG	"	"
Nickel	ND	9.83	"	"	"	CNG	"	09/24/2022
Selenium	0.400	0.0983	"	"	"	CNG	"	09/24/2022
Silver	ND	0.0983	"	"	"	CNG	"	"
Zinc	ND	98.3	"	"	"	CNG	"	"

Origins Laboratory, Inc.



The results in this report apply to the samples analyzed in accordance with the chain of custody document. This analytical report must be reproduced in its entirety.

Eagle Environmental Consulting, Inc.
8000 W 44th Ave
Wheat Ridge CO 80033

Martin C Eckert III
Project Number: [none]
Project: Noble - Baker State B #36-12

*** DEFAULT GENERAL METHOD *** - Quality Control
Origins Laboratory, Inc.

Analyte	Result	Reporting Limit	Units	Spike Level	Source Result	%REC	%REC Limits	RPD	RPD Limit	Notes
---------	--------	-----------------	-------	-------------	---------------	------	-------------	-----	-----------	-------

Batch B2I2311 - Default Prep Metals

Blank (B2I2311-BLK1)

Prepared: 09/23/2022 Analyzed: 09/24/2022

Arsenic	ND	0.000100	mg/kg
Barium	ND	0.0100	"
Cadmium	ND	0.000100	"
Copper	ND	0.0100	"
Lead	ND	0.0100	"
Nickel	ND	0.0100	"
Selenium	ND	0.000100	"
Silver	ND	0.000100	"
Zinc	ND	0.100	"

LCS (B2I2311-BS1)

Prepared: 09/23/2022 Analyzed: 09/24/2022

Arsenic	0.0490	0.000100	mg/kg	0.0500	98.0	80-120
Barium	5.09	0.0100	"	5.00	102	80-120
Cadmium	0.0488	0.000100	"	0.0500	97.6	80-120
Copper	0.533	0.0100	"	0.500	107	80-120
Lead	0.0518	0.0100	"	0.0500	104	80-120
Nickel	0.0501	0.0100	"	0.0500	100	80-120
Selenium	0.0496	0.000100	"	0.0500	99.1	80-120
Silver	0.0403	0.000100	"	0.0500	80.7	80-120
Zinc	0.483	0.100	"	0.500	96.6	80-120

Matrix Spike (B2I2311-MS1)

Source: Y209513-01

Prepared: 09/23/2022 Analyzed: 09/24/2022

Arsenic	5.70	0.0973	mg/kg	4.87	1.10	94.7	75-125
Barium	539	9.73	"	487	48.5	101	75-125
Cadmium	4.82	0.0973	"	4.87	0.0937	97.0	75-125
Copper	55.5	9.73	"	48.7	6.58	100	75-125
Lead	8.28	9.73	"	4.87	4.41	79.5	75-125

Origins Laboratory, Inc.



The results in this report apply to the samples analyzed in accordance with the chain of custody document. This analytical report must be reproduced in its entirety.

Eagle Environmental Consulting, Inc.
8000 W 44th Ave
Wheat Ridge CO 80033

Martin C Eckert III
Project Number: [none]
Project: Noble - Baker State B #36-12

*** DEFAULT GENERAL METHOD *** - Quality Control
Origins Laboratory, Inc.

Analyte	Result	Reporting Limit	Units	Spike Level	Source Result	%REC	%REC Limits	RPD	RPD Limit	Notes
Batch B2I2311 - Default Prep Metals										
Matrix Spike (B2I2311-MS1)		Source: Y209513-01			Prepared: 09/23/2022 Analyzed: 09/24/2022					
Nickel	6.64	9.73	mg/kg	4.87	2.48	85.5	75-125			
Selenium	4.53	0.0973	"	4.87	0.0947	91.1	75-125			
Silver	3.86	0.0973	"	4.87	0.224	74.7	75-125			QM-07
Zinc	67.5	97.3	"	48.7	26.1	85.1	75-125			
Matrix Spike Dup (B2I2311-MSD1)		Source: Y209513-01			Prepared: 09/23/2022 Analyzed: 09/24/2022					
Arsenic	6.87	0.0966	mg/kg	4.83	1.10	119	75-125	18.5	20	
Barium	536	9.66	"	483	48.5	101	75-125	0.654	20	
Cadmium	4.92	0.0966	"	4.83	0.0937	99.9	75-125	2.09	20	
Copper	56.6	9.66	"	48.3	6.58	104	75-125	2.04	20	
Lead	9.81	9.66	"	4.83	4.41	112	75-125	16.9	20	
Nickel	7.04	9.66	"	4.83	2.48	94.5	75-125	5.86	20	
Selenium	4.63	0.0966	"	4.83	0.0947	93.8	75-125	2.19	20	
Silver	3.99	0.0966	"	4.83	0.224	78.1	75-125	3.47	20	
Zinc	71.0	96.6	"	48.3	26.1	93.1	75-125	5.12	20	

Origins Laboratory, Inc.



The results in this report apply to the samples analyzed in accordance with the chain of custody document. This analytical report must be reproduced in its entirety.

Eagle Environmental Consulting, Inc.

8000 W 44th Ave

Wheat Ridge CO 80033

Martin C Eckert III

Project Number: [none]

Project: Noble - Baker State B #36-12

Notes and Definitions

QM-07 The spike recovery was outside acceptance limits for the MS and/or MSD. The batch was accepted based on acceptable LCS recovery.

ND Analyte NOT DETECTED at or above the reporting limit

RPD Relative Percent Difference

All soil results are reported at a wet weight basis.

Origins Laboratory, Inc.



The results in this report apply to the samples analyzed in accordance with the chain of custody document. This analytical report must be reproduced in its entirety.