

REMEDIAL EXCAVATION REPORT

JOHNSON C29-28 FLOWLINE

ECMC SPILL TRACKING #'s 487480,
487473, & 487479
ECMC REMEDIATION # 34724

Prepared for:



2115 117th Avenue
Greeley, CO 80631

Prepared by:



6855 W. 119th Ave
Broomfield, CO 80020

TABLES

TABLE 1
FIELD DATA SUMMARY TABLE
NOBLE ENERGY, INC - 100322
JOHNSON C 29-28, WELD COUNTY, COLORADO
REM # 34724

Sample ID	Sample Date	Depth (ft. bgs)	GPS Data Latitude/Longitude		PDOP Value	VOC Concentration (ppm)
FL01R-W@3'	7/2/2024	3	40.291064	-104.575378	1.0	0.0
FL01-01@3'	7/2/2024	3	40.290923	-104.575649	0.8	0.3
FL01-02@3'	7/2/2024	3	40.290872	-104.575761	0.8	0.5
FL01-03@3'	7/2/2024	3	40.290822	-104.575922	0.9	0.0
FL01-04@3'	7/2/2024	3	40.290833	-104.576278	0.9	0.0
FL01-05@3'	7/2/2024	3	40.290850	-104.576857	0.9	0.0
FL01-06@3'	7/2/2024	3	40.290833	-104.577182	0.9	0.1
FL01-07@3'	7/2/2024	3	40.290844	-104.578008	0.8	2.4
FL01-08@3'	7/2/2024	3	40.290875	-104.578535	1.0	0.2
BKG01@3'	7/2/2024	3	40.291245	-104.575239	NC	0.0
FS01-FL01-02@4.5'	8/2/2024	4.5	40.290868	-104.575760	NC	1.3
SS01-FL01-02@3'	8/2/2024	3	40.290892	-104.575760	1.2	1.2
SS02-FL01-02@3'	8/2/2024	3	40.290869	-104.575734	1.2	1.0
SS03-FL01-02@3'	8/2/2024	3	40.290846	-104.575760	1.2	1.8
SS04-FL01-02@3'	8/2/2024	3	40.290861	-104.575792	1.2	1.5
FS01-FL01-03@4'	8/1/2024	4	40.290811	-104.575920	0.9	0.0
SS01-FL01-03@3'	8/1/2024	3	40.290841	-104.575930	0.8	0.0
SS02-FL01-03@3'	8/1/2024	3	40.290822	-104.575895	0.8	0.0
SS03-FL01-03@3'	8/1/2024	3	40.290804	-104.575918	0.9	0.0
SS04-FL01-03@3'	8/1/2024	3	40.290821	-104.575947	0.9	0.0
FS01-FL01R-W@4'	8/2/2024	4	40.291063	-104.575385	1.3	1.3
SS01-FL01R-W@3'	8/2/2024	3	40.291098	-104.575394	1.4	1.1
SS02-FL01R-W@3'	8/2/2024	3	40.291063	-104.575352	1.7	1.8
SS03-FL01R-W@3'	8/2/2024	3	40.291044	-104.575391	1.3	4.0
SS04-FL01R-W@3'	8/2/2024	3	40.291068	-104.575418	1.3	0.8
BKG02@3'	8/1/2024	3	40.291261	-104.576534	1.1	0.0
BKG02@4'	8/1/2024	4	40.291261	-104.576534	1.1	0.0
BKG03@3'	8/1/2024	3	40.291383	-104.576335	1.1	2.7
BKG03@4'	8/1/2024	4	40.291383	-104.576335	1.1	0.7
BKG04@3'	8/1/2024	3	40.291427	-104.575610	1.0	0.7
BKG04@4'	8/1/2024	4	40.291427	-104.575610	1.0	0.6
BKG05@3'	8/1/2024	3	40.291641	-104.575533	1.0	0.3
BKG05@4'	8/1/2024	4	40.291641	-104.575533	1.0	1.0
BKG06@3'	8/1/2024	3	40.291054	-104.574825	NC	0.1
BKG06@4'	8/1/2024	4	40.291054	-104.574825	NC	0.0

Notes:

- Global Positioning System (GPS) data is provided in decimal degrees using North American Datum (NAD) 83 UTMZone 13 North.
- Volatile organic compound (VOC) concentrations are measured in the field using a photoionization detector (PID).

PDOP = Position Dilution of Precision

ppm = Parts per million

ft. = Feet

bgs = Below ground surface

NC = Data not collected

TABLE 2
SUMMARY OF VOLATILE ORGANIC SOIL CHEMISTRY DATA
NOBLE ENERGY, INC - 100322
JOHNSON C 29-28, WELD COUNTY, COLORADO
REM # 34724

Sample ID	Sample Date	Depth (ft. bgs)	Benzene (mg/kg)	Toluene (mg/kg)	Ethyl-Benzene (mg/kg)	Xylenes (mg/kg)	1,2,4- Trimethyl- Benzene (mg/kg)	1,3,5- Trimethyl- Benzene (mg/kg)	Naphthalene (mg/kg)	TPH (mg/kg)	TPH GRO (mg/kg)	TPH DRO (mg/kg)	TPH ORO (mg/kg)
ECMC Table 915-1 Limits (Residential SSL)			1.2	490	5.8	58	30	27	2	500	500**		
ECMC Table 915-1 Limits (Protection of Groundwater SSL)			0.0026	0.69	0.78	9.9	0.0081	0.0087	0.0038	500	500**		
FL01-02@3'	7/2/2024	3	<0.0020	<0.0050	<0.0050	<0.010	<0.0050	<0.0050	<0.0038	<500	<0.50	<50	<50
FL01-03@3'	7/2/2024	3	<0.0020	<0.0050	<0.0050	<0.010	<0.0050	<0.0050	0.0210	<500	<0.50	<50	<50
FL01R-W@3'	7/2/2024	3	<0.0020	<0.0050	<0.0050	<0.010	<0.0050	<0.0050	<0.0038	<500	<0.50	<50	<50
FS01-FL01-02@4.5'	8/2/2024	4.5	<0.0020	<0.0050	<0.0050	<0.010	<0.0050	<0.0050	<0.0038	<500	<0.50	<50	<50
SS01-FL01-02@3'	8/2/2024	3	<0.0020	<0.0050	<0.0050	<0.010	<0.0050	<0.0050	<0.0038	<500	<0.50	<50	<50
SS02-FL01-02@3'	8/2/2024	3	<0.0020	<0.0050	<0.0050	<0.010	<0.0050	<0.0050	<0.0038	<500	<0.50	<50	<50
SS03-FL01-02@3'	8/2/2024	3	<0.0020	<0.0050	<0.0050	<0.010	<0.0050	<0.0050	<0.0038	<500	<0.50	<50	<50
SS04-FL01-02@3'	8/2/2024	3	<0.0020	<0.0050	<0.0050	<0.010	<0.0050	<0.0050	<0.0038	<500	<0.50	<50	<50
FS01-FL01-03@4'	8/1/2024	4	<0.0020	<0.0050	<0.0050	<0.010	<0.0050	<0.0050	<0.0038	<500	<0.50	<50	<50
SS01-FL01-03@3'	8/1/2024	3	<0.0020	<0.0050	<0.0050	<0.010	<0.0050	<0.0050	<0.0038	<500	<0.50	<50	<50
SS02-FL01-03@3'	8/1/2024	3	<0.0020	<0.0050	<0.0050	<0.010	<0.0050	<0.0050	<0.0038	<500	<0.50	<50	<50
SS03-FL01-03@3'	8/1/2024	3	<0.0020	<0.0050	<0.0050	<0.010	<0.0050	<0.0050	<0.0038	<500	<0.50	<50	<50
SS04-FL01-03@3'	8/1/2024	3	<0.0020	<0.0050	<0.0050	<0.010	<0.0050	<0.0050	<0.0038	<500	<0.50	<50	<50
FS01-FL01R-W@4'	8/2/2024	4	<0.0020	<0.0050	<0.0050	<0.010	<0.0050	<0.0050	<0.0038	<500	<0.50	<50	<50
SS01-FL01R-W@3'	8/2/2024	3	<0.0020	<0.0050	<0.0050	<0.010	<0.0050	<0.0050	<0.0038	<500	<0.50	<50	<50
SS02-FL01R-W@3'	8/2/2024	3	<0.0020	<0.0050	<0.0050	<0.010	<0.0050	<0.0050	<0.0038	<500	<0.50	<50	<50
SS03-FL01R-W@3'	8/2/2024	3	<0.0020	<0.0050	<0.0050	<0.010	<0.0050	<0.0050	<0.0038	<500	<0.50	<50	<50
SS04-FL01R-W@3'	8/2/2024	3	<0.0020	<0.0050	<0.0050	<0.010	<0.0050	<0.0050	<0.0038	<500	<0.50	<50	<50

Notes:

1. **Bold** values exceed the ECMC Table 915-1 limit(s)
2. Pink & blue highlighted soil analytical values indicate an exceedance of the referenced soil screening level (SSL)
3. * Indicates laboratory minimum detection limit in excess of SSL
4. ** Summation of GRO+DRO+ORO must be less than 500 mg/kg

ECMC = Energy & Carbon Management Commission

(<) = Analytical result is less than the indicated laboratory reporting limit.

TPH-GRO = Total petroleum hydrocarbons - gasoline range organics

TPH-DRO = Total petroleum hydrocarbons - diesel range organics

TPH-ORO = Total petroleum hydrocarbons - oil range organics

mg/kg = Milligrams per kilogram

ft. = Feet

bgs = Below ground surface

TABLE 3
SUMMARY OF POLYCYCLIC AROMATIC HYDROCARBON SOIL CHEMISTRY DATA
NOBLE ENERGY, INC - 100322
JOHNSON C 29-28, WELD COUNTY, COLORADO
REM # 34724

Sample ID	Sample Date	Depth (ft. bgs)	Acenaphthene (mg/kg)	Anthracene (mg/kg)	Benzo (a) Anthracene (mg/kg)	Benzo (a) Pyrene (mg/kg)	Benzo (b) Fluoranthene (mg/kg)	Benzo (k) Fluoranthene (mg/kg)	Chrysene (mg/kg)	Dibenzo (a,h) Anthracene (mg/kg)	Fluoranthene (mg/kg)	Fluorene (mg/kg)	Indeno (1,2,3- cd) Pyrene (mg/kg)	Pyrene (mg/kg)	1-Methyl - Naphthalene (mg/kg)	2-Methyl- Naphthalene (mg/kg)
ECMC Table 915-1 Limits (Residential SSL)			360	1,800	1.1	0.11	1.1	11	110	0.11	240	240	1.1	180	18	24
ECMC Table 915-1 Limits (Protection of Groundwater SSL)			0.55	5.8	0.011	0.24	0.3	2.9	9	0.096	8.9	0.54	0.98	1.3	0.006	0.019
FL01-02@3'	7/2/2024	3	0.663	0.745	0.994	0.682	0.942	0.370	0.938	0.131	2.84	0.750	0.411	2.23	0.116	0.234
FL01-03@3'	7/2/2024	3	0.376	0.701	1.07	0.739	1.03	0.411	1.04	0.160	2.89	0.464	0.464	2.24	0.0349	0.0774
FL01R-W@3'	7/2/2024	3	<0.00500	0.0111	0.0207	0.0138	0.0211	0.00516	0.0208	<0.00500	0.055	0.00727	0.0119	0.0453	<0.00500	<0.00500
FS01-FL01-02@4.5'	8/2/2024	4.5	<0.00500	<0.00500	<0.00500	<0.00500	<0.00500	<0.00500	<0.00500	<0.00500	<0.00500	<0.00500	<0.00500	<0.00500	<0.00500	<0.00500
SS01-FL01-02@3'	8/2/2024	3	<0.00500	<0.00500	<0.00500	<0.00500	<0.00500	<0.00500	<0.00500	<0.00500	<0.00500	<0.00500	<0.00500	<0.00500	<0.00500	<0.00500
SS02-FL01-02@3'	8/2/2024	3	<0.00500	<0.00500	<0.00500	<0.00500	<0.00500	<0.00500	<0.00500	<0.00500	<0.00500	<0.00500	<0.00500	<0.00500	<0.00500	<0.00500
SS03-FL01-02@3'	8/2/2024	3	<0.00500	<0.00500	<0.00500	<0.00500	<0.00500	<0.00500	<0.00500	<0.00500	<0.00500	<0.00500	<0.00500	<0.00500	<0.00500	<0.00500
SS04-FL01-02@3'	8/2/2024	3	<0.00500	<0.00500	<0.00500	<0.00500	<0.00500	<0.00500	<0.00500	<0.00500	<0.00500	<0.00500	<0.00500	<0.00500	<0.00500	<0.00500
FS01-FL01-03@4'	8/1/2024	4	<0.00500	<0.00500	<0.00500	<0.00500	<0.00500	<0.00500	<0.00500	<0.00500	<0.00500	<0.00500	<0.00500	<0.00500	<0.00500	<0.00500
SS01-FL01-03@3'	8/1/2024	3	<0.00500	<0.00500	<0.00500	<0.00500	<0.00500	<0.00500	<0.00500	<0.00500	<0.00500	<0.00500	<0.00500	<0.00500	<0.00500	<0.00500
SS02-FL01-03@3'	8/1/2024	3	<0.00500	<0.00500	<0.00500	<0.00500	<0.00500	<0.00500	<0.00500	<0.00500	<0.00500	<0.00500	<0.00500	<0.00500	<0.00500	<0.00500
SS03-FL01-03@3'	8/1/2024	3	<0.00500	<0.00500	<0.00500	<0.00500	<0.00500	<0.00500	<0.00500	<0.00500	<0.00500	<0.00500	<0.00500	<0.00500	<0.00500	<0.00500
SS04-FL01-03@3'	8/1/2024	3	<0.00500	<0.00500	<0.00500	<0.00500	<0.00500	<0.00500	<0.00500	<0.00500	<0.00500	<0.00500	<0.00500	<0.00500	<0.00500	<0.00500
FS01-FL01R-W@4'	8/2/2024	4	<0.00500	<0.00500	<0.00500	<0.00500	<0.00500	<0.00500	<0.00500	<0.00500	<0.00500	<0.00500	<0.00500	<0.00500	<0.00500	<0.00500
SS01-FL01R-W@3'	8/2/2024	3	<0.00500	<0.00500	<0.00500	<0.00500	<0.00500	<0.00500	<0.00500	<0.00500	<0.00500	<0.00500	<0.00500	<0.00500	<0.00500	<0.00500
SS02-FL01R-W@3'	8/2/2024	3	<0.00500	<0.00500	<0.00500	<0.00500	<0.00500	<0.00500	<0.00500	<0.00500	<0.00500	<0.00500	<0.00500	<0.00500	<0.00500	<0.00500
SS03-FL01R-W@3'	8/2/2024	3	<0.00500	<0.00500	<0.00500	<0.00500	<0.00500	<0.00500	<0.00500	<0.00500	<0.00500	<0.00500	<0.00500	<0.00500	<0.00500	<0.00500
SS04-FL01R-W@3'	8/2/2024	3	<0.00500	<0.00500	<0.00500	<0.00500	<0.00500	<0.00500	<0.00500	<0.00500	<0.00500	<0.00500	<0.00500	<0.00500	<0.00500	<0.00500

Notes:

1. **Bold** values exceed the ECMC Table 915-1 limit(s)

2. Pink & blue highlighted soil analytical values indicate an exceedance of the referenced soil screening level (SSL)

3. * Indicates laboratory minimum detection limit in excess of SSL

ECMC = Colorado Energy & Carbon Management Commission

(<) = Analytical result is less than the indicated laboratory reporting limit.

ft. = Feet

bgs = Below ground surface

mg/kg = Milligrams per kilogram

TABLE 4
SUMMARY OF SOIL SUITABILITY FOR RECLAMATION
NOBLE ENERGY, INC - 100322
JOHNSON C 29-28, WELD COUNTY, COLORADO
REM # 34724

Sample ID	Sample Date	Depth (ft. bgs)	pH (Standard Units)	EC (mmhos/cm)	SAR (Standard Units)	Boron (mg/L)
ECMC Table 915-1 Soil Suitability Limits			6 - 8.3	<4	<6	2
FL01-02@3'	7/2/2024	3	8.07	0.460	2.08	<2.00
FL01-03@3'	7/2/2024	3	8.36	0.471	2.80	<2.00
FL01R-W@3'	7/2/2024	3	8.17	0.520	1.65	<2.00
FS01-FL01-02@4.5'	8/2/2024	4.5	8.49	0.433	1.59	<2.00
SS01-FL01-02@3'	8/2/2024	3	8.71	0.332	1.18	<2.00
SS02-FL01-02@3'	8/2/2024	3	8.90	0.287	0.840	<2.00
SS03-FL01-02@3'	8/2/2024	3	8.58	0.422	1.04	<2.00
SS04-FL01-02@3'	8/2/2024	3	8.84	0.306	1.24	<2.00
FS01-FL01-03@4'	8/1/2024	4	7.98	0.636	2.53	<2.00
SS01-FL01-03@3'	8/1/2024	3	8.10	1.51	5.81	<2.00
SS02-FL01-03@3'	8/1/2024	3	8.17	0.470	1.54	<2.00
SS03-FL01-03@3'	8/1/2024	3	7.89	0.367	1.50	<2.00
SS04-FL01-03@3'	8/1/2024	3	8.24	0.417	1.84	<2.00
FS01-FL01R-W@4'	8/2/2024	4	8.40	0.597	1.92	<2.00
SS01-FL01R-W@3'	8/2/2024	3	8.65	0.564	2.83	<2.00
SS02-FL01R-W@3'	8/2/2024	3	8.62	0.231	0.495	<2.00
SS03-FL01R-W@3'	8/2/2024	3	8.44	0.619	2.96	<2.00
SS04-FL01R-W@3'	8/2/2024	3	8.19	0.833	3.91	<2.00
BKG01@3'	7/2/2024	3	8.36	1.03	3.97	<2.00
BKG02@3'	8/1/2024	3	8.11	4.36	13.3	2.29
BKG02@4'	8/1/2024	4	7.82	5.49	11.4	<2.00
BKG03@3'	8/1/2024	3	8.52	3.16	15.3	3.32
BKG03@4'	8/1/2024	4	8.12	2.97	10.5	<2.00
BKG04@3'	8/1/2024	3	8.03	1.91	6.56	<2.00
BKG04@4'	8/1/2024	4	8.14	1.29	4.05	<2.00
BKG05@3'	8/1/2024	3	8.35	0.853	3.76	<2.00
BKG05@4'	8/1/2024	4	7.99	0.959	2.50	<2.00
BKG06@3'	8/1/2024	3	8.19	0.974	3.64	<2.00
BKG06@4'	8/1/2024	4	8.31	0.640	1.02	<2.00
Maximum Background Concentration			8.52	5.49	15.30	3.32

Notes:

- 1. Bold** faced values exceed the ECMC Table 915-1 limit(s), but are within 1.25x background concentrations.
- 2. Bold** faced values exceed the ECMC Table 915-1 limit(s) above native background concentrations.
- Brown highlighted soil analytical values indicate a regulatory exceedance.

ECMC = Colorado Energy & Carbon Management Commission

EC = Electrical conductivity

SAR = Sodium adsorption ratio

mmhos/cm = millimhos per centimeter

mg/L = milligram per liter

(<) = Analytical result is less than the indicated laboratory reporting limit.

ft. = Feet

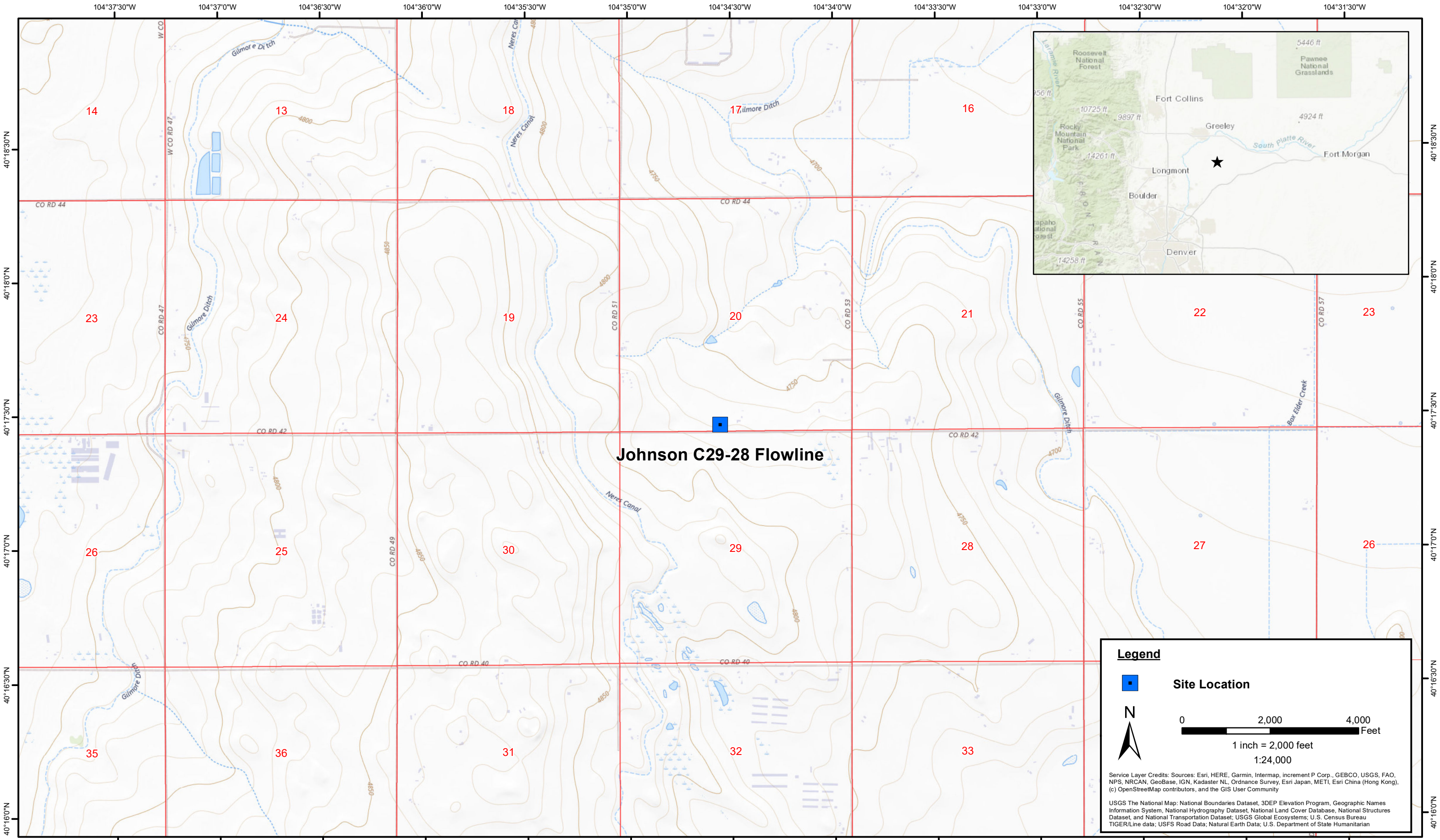
bgs = Below ground surface

TABLE 5
SUMMARY OF METALS IN SOIL CHEMISTRY DATA
NOBLE ENERGY, INC - 100322
JOHNSON C 29-28, WELD COUNTY, COLORADO
REM # 34724

Sample ID	Sample Date	Depth (ft. bgs)	Arsenic (mg/kg)	Barium (mg/kg)	Cadmium (mg/kg)	Chromium (VI) ^[4] (mg/kg)	Copper (mg/kg)	Lead (mg/kg)	Nickel (mg/kg)	Selenium (mg/kg)	Silver (mg/kg)	Zinc (mg/kg)
ECMC Table 915-1 Limits (Residential SSL)			0.68	15,000	71	0.3	3,100	400	1,500	390	390	23,000
ECMC Table 915-1 Limits (Protection of Groundwater SSL)			0.29	82	0.38	0.00067	46	14	26	0.26	0.8	370
FL01-02@3'	7/2/2024	3	1.37	74.1	<0.179	<0.30*	3.84	5.83	3.85	<0.232	0.127	17.0
FL01-03@3'	7/2/2024	3	1.58	76.8	<0.200	<0.30*	4.48	6.74	4.12	<0.260	0.0525	17.6
FL01R-W@3'	7/2/2024	3	1.59	65.6	<0.200	<0.30*	3.65	6.07	4.34	<0.260	0.0462	16.8
FS01-FL01-02@4.5'	8/2/2024	4.5	1.56	61.5	<0.200	<0.30*	2.57	4.06	3.86	<0.260	0.0205	13.7
SS01-FL01-02@3'	8/2/2024	3	1.79	91.7	<0.200	<0.30*	3.93	5.55	4.45	<0.260	0.0352	17.7
SS02-FL01-02@3'	8/2/2024	3	1.68	53.8	<0.200	<0.30*	2.98	4.08	3.64	<0.260	0.0281	14.1
SS03-FL01-02@3'	8/2/2024	3	1.75	49.9	<0.200	<0.30*	2.69	4.17	3.89	<0.260	0.0267	13.5
SS04-FL01-02@3'	8/2/2024	3	1.79	52.8	<0.200	<0.30*	2.84	4.28	3.90	<0.260	0.0232	14.3
FS01-FL01-03@4'	8/1/2024	4	1.80	74.1	<0.180	<0.30*	3.66	5.49	4.42	<0.234	0.0260	16.0
SS01-FL01-03@3'	8/1/2024	3	4.20	71.8	<0.200	<0.30*	4.07	5.76	5.40	<0.260	0.0387	16.9
SS02-FL01-03@3'	8/1/2024	3	2.95	65.4	<0.200	<0.30*	3.39	4.76	4.89	<0.260	0.0240	14.8
SS03-FL01-03@3'	8/1/2024	3	2.70	57.8	<0.200	<0.30*	3.53	4.98	4.92	<0.260	0.0271	15.1
SS04-FL01-03@3'	8/1/2024	3	2.15	50.8	<0.200	<0.30*	3.36	4.31	4.35	<0.260	0.0277	13.4
FS01-FL01R-W@4'	8/2/2024	4	0.832	60.1	<0.200	<0.30*	2.13	3.82	3.36	<0.260	<0.0200	12.8
SS01-FL01R-W@3'	8/2/2024	3	1.25	60.8	<0.179	<0.30*	2.22	3.81	3.70	<0.232	0.0202	13.0
SS02-FL01R-W@3'	8/2/2024	3	1.62	51.5	<0.200	<0.30*	3.09	5.62	4.04	<0.260	0.0253	15.2
SS03-FL01R-W@3'	8/2/2024	3	1.52	43.8	<0.200	<0.30*	2.47	4.12	3.72	<0.260	<0.0200	13.5
SS04-FL01R-W@3'	8/2/2024	3	1.67	52.4	<0.200	<0.30*	2.66	3.88	3.75	<0.260	<0.0200	13.8
BKG01@3'	7/2/2024	3	1.16	74.8	<0.181	<0.30	2.95	5.05	4.21	<0.236	0.0233	15.5
BKG02@3'	8/1/2024	3	3.73	83.5	<0.200	<0.30	4.16	6.49	5.37	<0.260	0.0355	19.8
BKG02@4'	8/1/2024	4	2.63	73.1	<0.180	<0.30	3.42	5.05	4.26	<0.234	0.0230	15.4
BKG03@3'	8/1/2024	3	3.46	81.8	<0.200	<0.30	5.23	7.31	5.75	<0.260	0.0456	21.3
BKG03@4'	8/1/2024	4	3.12	87.1	<0.179	<0.30	3.57	5.40	4.91	<0.232	0.0245	16.0
BKG04@3'	8/1/2024	3	2.66	61.4	<0.200	<0.30	3.47	5.06	4.82	<0.260	0.0299	14.9
BKG04@4'	8/1/2024	4	2.14	69.1	<0.200	<0.30	3.49	4.74	4.74	<0.260	0.0260	15.1
BKG05@3'	8/1/2024	3	2.50	65.3	<0.200	<0.30	3.23	4.72	4.66	<0.260	0.0279	14.4
BKG05@4'	8/1/2024	4	1.87	62.6	<0.180	<0.30	2.70	4.17	4.26	<0.234	<0.0180	12.2
BKG06@3'	8/1/2024	3	1.84	52.7	<0.200	<0.30	2.82	4.28	3.85	<0.260	<0.0200	13.5
BKG06@4'	8/1/2024	4	1.59	56.3	<0.200	<0.30	2.81	4.89	3.57	<0.260	0.0229	14.6
Maximum Background Concentration			3.73	87.1	-	-	-	-	-	-	-	-
Maximum Background Concentration X 1.25			4.66	109	-	-	-	-	-	-	-	-

1. **Bold** faced values exceed the ECMC Table 915-1 limit(s), but are within 1.25x background concentrations.
 2. **Red** faced values exceed the ECMC Table 915-1 limit(s) above native background concentrations.
 3. Red & blue highlighted soil analytical values indicate an exceedance of the referenced soil screening level (SSL)
 4. Compound falls within ECMC Table 915-1 Footnote 9.
 5. Non-detect background results accounted for in the highest background concentration by using the reporting limit.
- ECMC = Energy & Carbon Management Commission
(<) = Analytical result is less than the indicated laboratory reporting limit.
mg/kg = Milligrams per kilogram
ft. = Feet
bgs = Below ground surface
* Indicates laboratory minimum detection limit in excess of SSL

FIGURES



DATE:	July 2024
DESIGNED BY:	B. Nelson
DRAWN BY:	J. Clonts




Tasman, Inc.
6855 W. 119th Ave
Broomfield, CO 80020

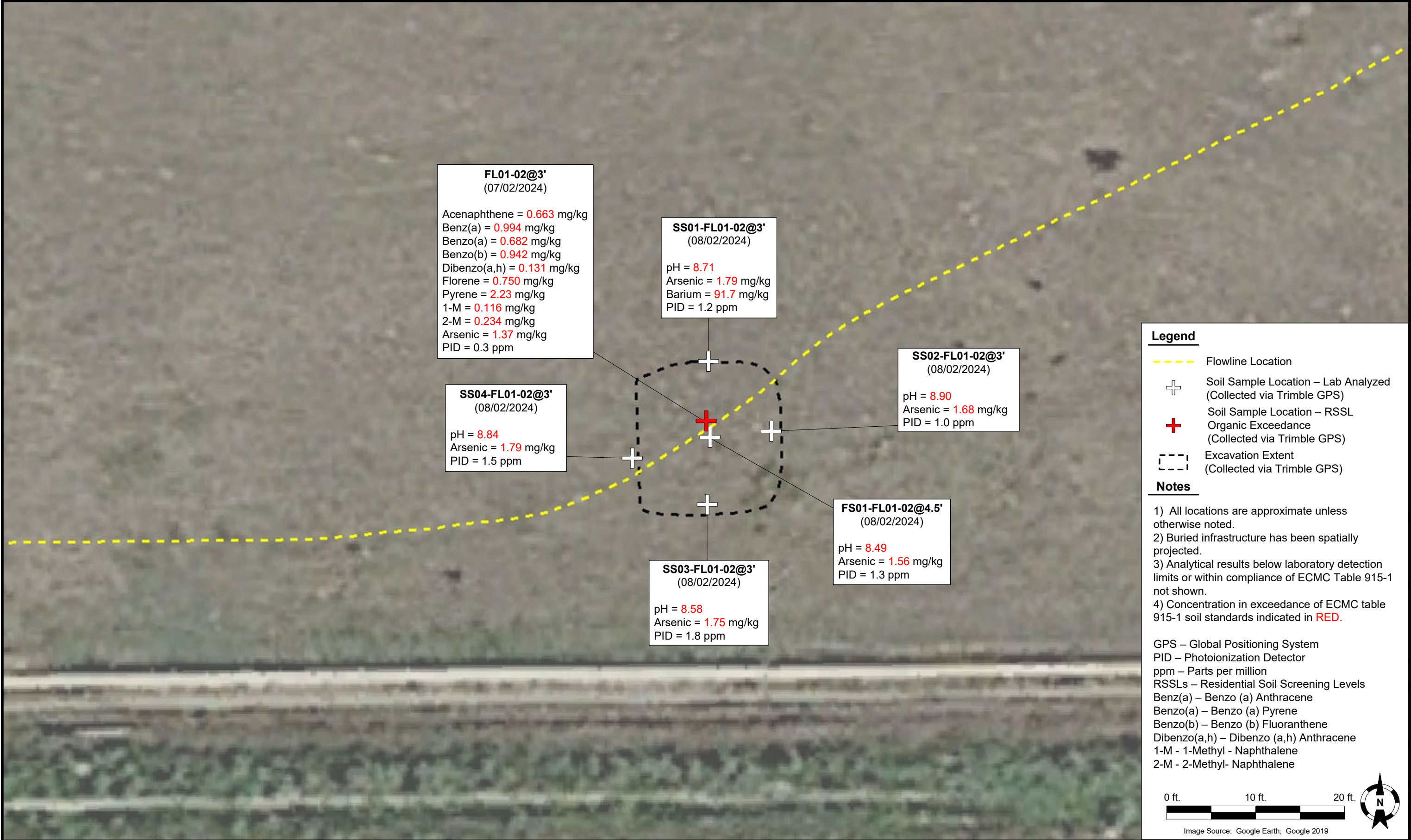
Noble Energy, Inc. – DJ Basin
Johnson C29-28 Flowline
SESW, Section 20, Township 4 North, Range 64 West
Weld County, Colorado


Site Location Map

Figure
1



DATE:	09/05/2024	 <div>Tasman, Inc. 6855 W 119th Avenue Broomfield, CO 80020</div>	Noble Energy, Inc. – 100322 – DJ Basin Johnson C 29-28 SESW, Section 20, Township 4 North, Range 64 West Weld County, Colorado	Excavation Soil Analytical Results Map (07/02/2024, 08/02/2024)	FIGURE 2
DESIGNED BY:	JW				
DRAWN BY:	L. Bohannon				



DATE: 09/05/2024	 TASMAN Tasman, Inc. 6855 W 119 th Avenue Broomfield, CO 80020	Noble Energy, Inc. – 100322 – DJ Basin Johnson C 29-28 SESW, Section 20, Township 4 North, Range 64 West Weld County, Colorado	Excavation Soil Analytical Results Map (07/02/2024, 08/02/2024)	FIGURE 3
DESIGNED BY: JW				
DRAWN BY: L. Bohannon				

