

Inspection Photos

Location Name: TEP ROCKY MOUNTAIN LLC DOE RM-2-8 Pad

Location ID: 335743



Photo # 6109 From entrance to location



Photo # 6110 Location

Inspection Photos

Location Name: TEP ROCKY MOUNTAIN LLC DOE RM-2-8 Pad

Location ID: 335743



Photo # 6111 Location



Photo # 6112 Location

Inspection Photos

Location Name: TEP ROCKY MOUNTAIN LLC DOE RM-2-8 Pad

Location ID: 335743



Photo # 6113 Location



Photo # 6114 Location

Inspection Photos

Location Name: TEP ROCKY MOUNTAIN LLC DOE RM-2-8 Pad

Location ID: 335743



Photo # 6115 Location



Photo # 6116 Location

Inspection Photos

Location Name: TEP ROCKY MOUNTAIN LLC DOE RM-2-8 Pad

Location ID: 335743



Photo # 6117 Location



Photo # 6118 Location

Inspection Photos

Location Name: TEP ROCKY MOUNTAIN LLC DOE RM-2-8 Pad

Location ID: 335743



Photo # 6119 Location

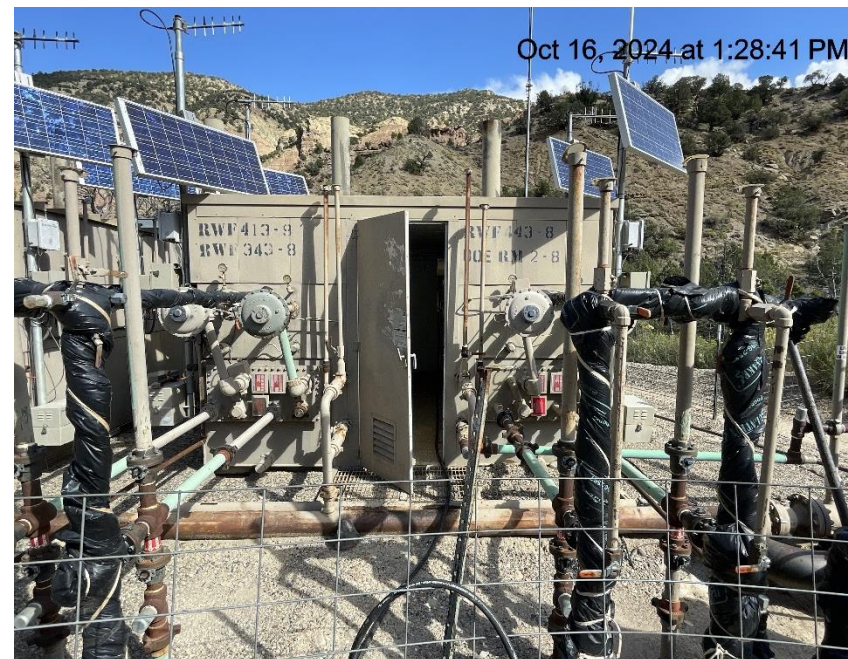


Photo # 6120 Location

Inspection Photos

Location Name: TEP ROCKY MOUNTAIN LLC DOE RM-2-8 Pad

Location ID: 335743



Photo # 6121 Location



Photo # 6122 Location

Inspection Photos

Location Name: TEP ROCKY MOUNTAIN LLC DOE RM-2-8 Pad

Location ID: 335743



Photo # 6123 Location



Photo # 6124 Location

Inspection Photos

Location Name: TEP ROCKY MOUNTAIN LLC DOE RM-2-8 Pad

Location ID: 335743



Photo # 6125 Staining near separator unit



Photo # 6126 PRV vent line on VALERUS compressor does not comply with CECMC pressure safety device rules (additionally hole drilled in the 90 on vent line is pointing straight out & not down which constitutes a safety issue as well)

Inspection Photos

Location Name: TEP ROCKY MOUNTAIN LLC DOE RM-2-8 Pad

Location ID: 335743



Photo # 6127 PRV vent line on VALERUS compressor does not comply with CECMC pressure safety device rules



Photo # 6128 PRV vent line on VALERUS compressor does not comply with CECMC pressure safety device rules

Inspection Photos

Location Name: TEP ROCKY MOUNTAIN LLC DOE RM-2-8 Pad

Location ID: 335743



Photo # 6129 PRV vent line on separator does not comply with CECMC pressure safety device rules



Photo # 6130 PRV vent line on separator does not comply with CECMC pressure safety device rules

Inspection Photos

Location Name: TEP ROCKY MOUNTAIN LLC DOE RM-2-8 Pad

Location ID: 335743



Photo # 6131 PRV vent line on FLOGISTIX compressor does not comply with CECMC pressure safety device rules



Photo # 6132 PRV vent line on FLOGISTIX compressor does not comply with CECMC pressure safety device rules

Inspection Photos

Location Name: TEP ROCKY MOUNTAIN LLC DOE RM-2-8 Pad

Location ID: 335743



Photo # 6133 Burner exhaust stacks on separator units lack bird protection/wildlife hazard



Photo # 6134 Burner exhaust stacks on separator units lack bird protection/wildlife hazard

Inspection Photos

Location Name: TEP ROCKY MOUNTAIN LLC DOE RM-2-8 Pad

Location ID: 335743



Photo # 6135 Burner exhaust stacks on separator units lack bird protection/wildlife hazard



Photo # 6136 Burner exhaust stacks on separator units lack bird protection/wildlife hazard

Inspection Photos

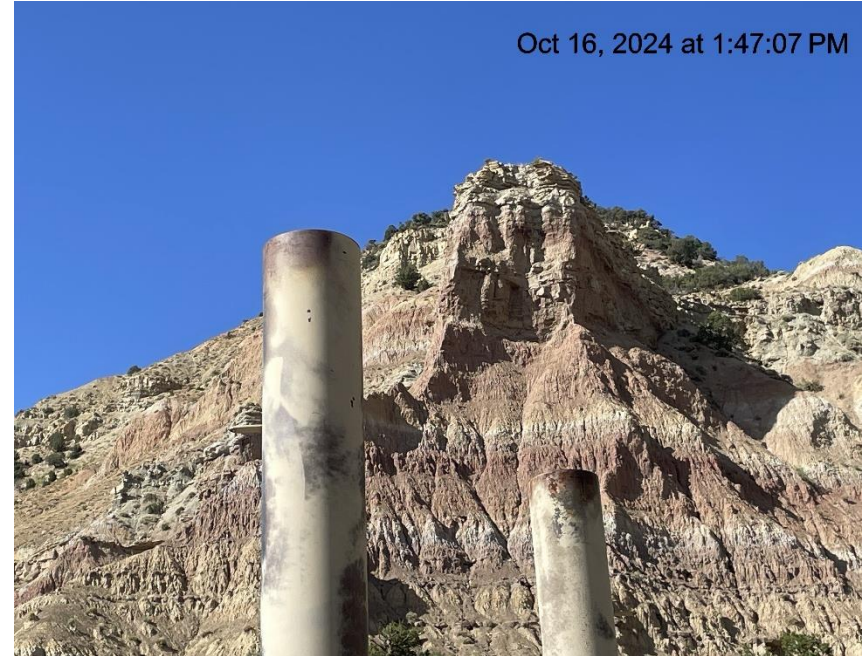
Location Name: TEP ROCKY MOUNTAIN LLC DOE RM-2-8 Pad

Location ID: 335743



Oct 16, 2024 at 1:46:24 PM

Photo # 6137 Burner exhaust stacks on separator units lack bird protection/wildlife hazard



Oct 16, 2024 at 1:47:07 PM

Photo # 6138 Burner exhaust stacks on separator units lack bird protection/wildlife hazard

Inspection Photos

Location Name: TEP ROCKY MOUNTAIN LLC DOE RM-2-8 Pad

Location ID: 335743



Photo # 6139 Staining near wellhead