

**TEP Rocky Mountain LLC
Federal RGU 14-28-198
Location ID: 433287**



Unused equipment



Faded and illegible labels

**TEP Rocky Mountain LLC
Federal RGU 14-28-198
Location ID: 433287**



Oily waste and staining



Safety hazard

TEP Rocky Mountain LLC
Federal RGU 14-28-198
Location ID: 433287



Safety hazard



Safety hazard

TEP Rocky Mountain LLC
Federal RGU 14-28-198
Location ID: 433287

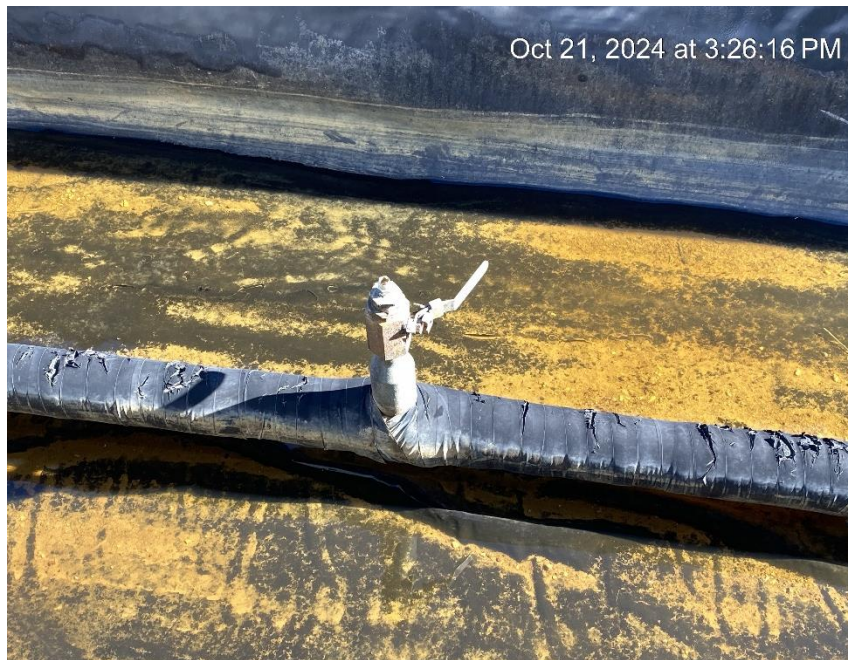


Tank out of service



Tank out of service

TEP Rocky Mountain LLC
Federal RGU 14-28-198
Location ID: 433287



Safety hazard



Unused separator

**TEP Rocky Mountain LLC
Federal RGU 14-28-198
Location ID: 433287**



Wellheads from South entrance



Tank battery from South entrance

**TEP Rocky Mountain LLC
Federal RGU 14-28-198
Location ID: 433287**



Separators from South entrance



Location from Southeast corner

**TEP Rocky Mountain LLC
Federal RGU 14-28-198
Location ID: 433287**



Location from Northwest corner



Location from Southwest corner