

**RADIAL BOND LOG
WITH GAMMA RAY**

ENERGY SERVICES

Comp. CHEVRON		Company CHEVRON	
Well WAHLERT AC33-67HN		Well WAHLERT AC33-67HN	
Field Wattenberg		Field Wattenberg	
Co. Weld		County Weld	
State Colorado		State Colorado	
Location: NW/NW		API # : 05-123-34522	
SEC 33 TWP 7N RGE 63W		Other Services	
Permanent Datum	GL	Elevation	4782
Log Measured From	KB 24	Above Perm. Datum	
Drilling Measured From	KB	K.B. 4806	
		D.F. 4805	
		G.L. 4782	
Date of Service	08/07/2024		
Run Number	ONE		
Depth Driller or PBTD	8025		
Depth Logger	2600		
Bottom Log Interval	2604		
Top Log Interval	SURFACE		
Open Hole Size	7.875		
Type Fluid	WATER		
Fluid Level	Full		
Fluid Density	N/A		
Max. Recorded Temperature	N/A		
Max. Wellhead Pressure	0		
Wellhead Connection	N/A		
Estimated Cement Top	SEE LOG		
Unit Number	5075		
Wireline Size	9/32		
Location	GREELEY CO		
Recorded By	CODY JENSEN		
Witnessed By			
	Size	Wt/Ft	Top
Tubing Record			Bottom
Surface Casing	9 5/8	36	SURFACE
Production Casing	7	26	SURFACE
Liner Record			

<<< Fold Here >>>

All interpretations are opinions based on inferences from electrical or other measurements and Pioneer Wireline Services, LLC cannot and does not guarantee the accuracy or correctness of any interpretation, and Pioneer Wireline Services, LLC will not be liable or responsible for any loss, costs, damages, or expenses incurred or sustained by anyone resulting from any interpretation made by any of our officers, agents or employees.

Comments

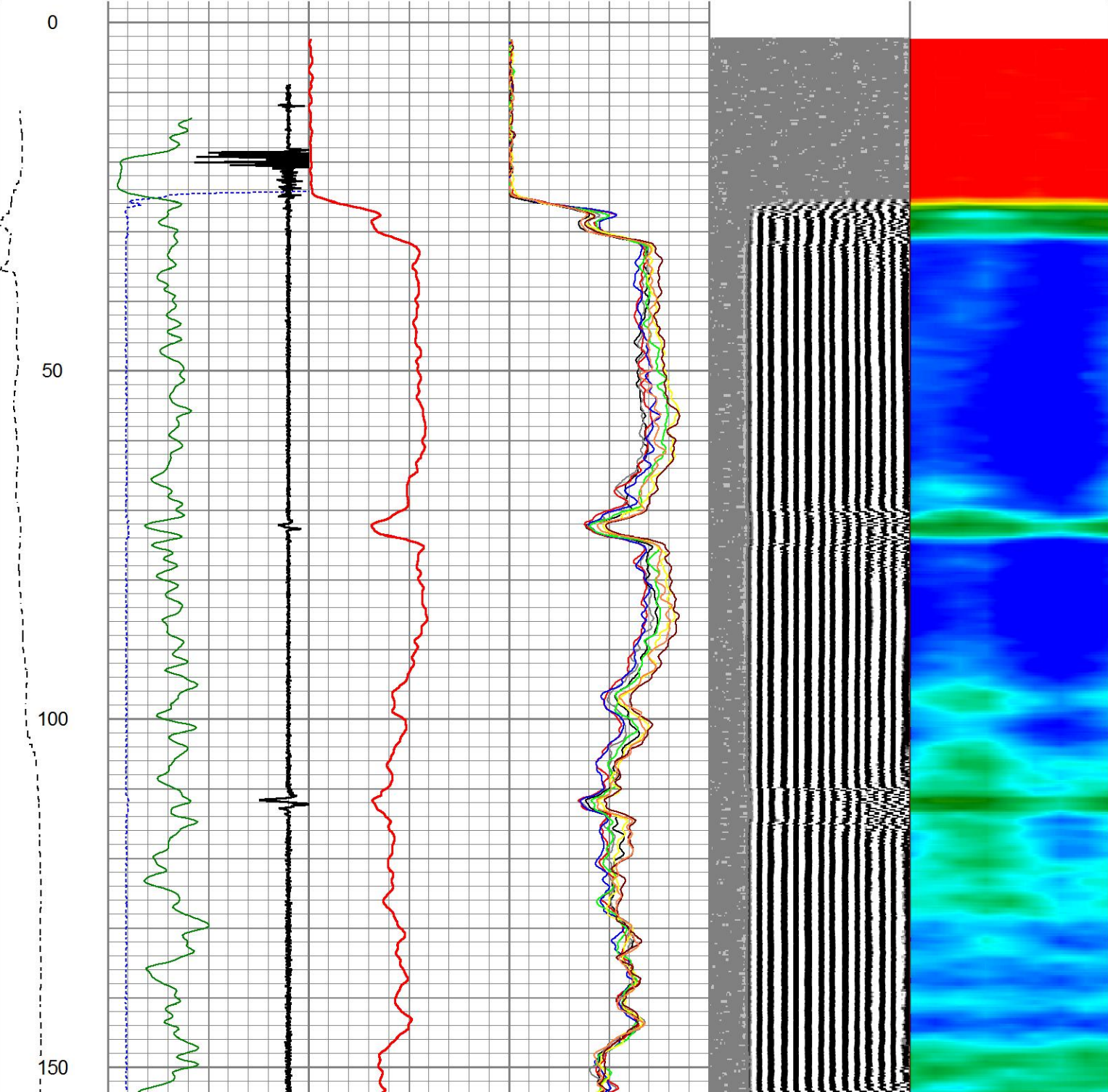
N/A DENOTES NOT AVAILABLE OR NON-APPLICABLE.

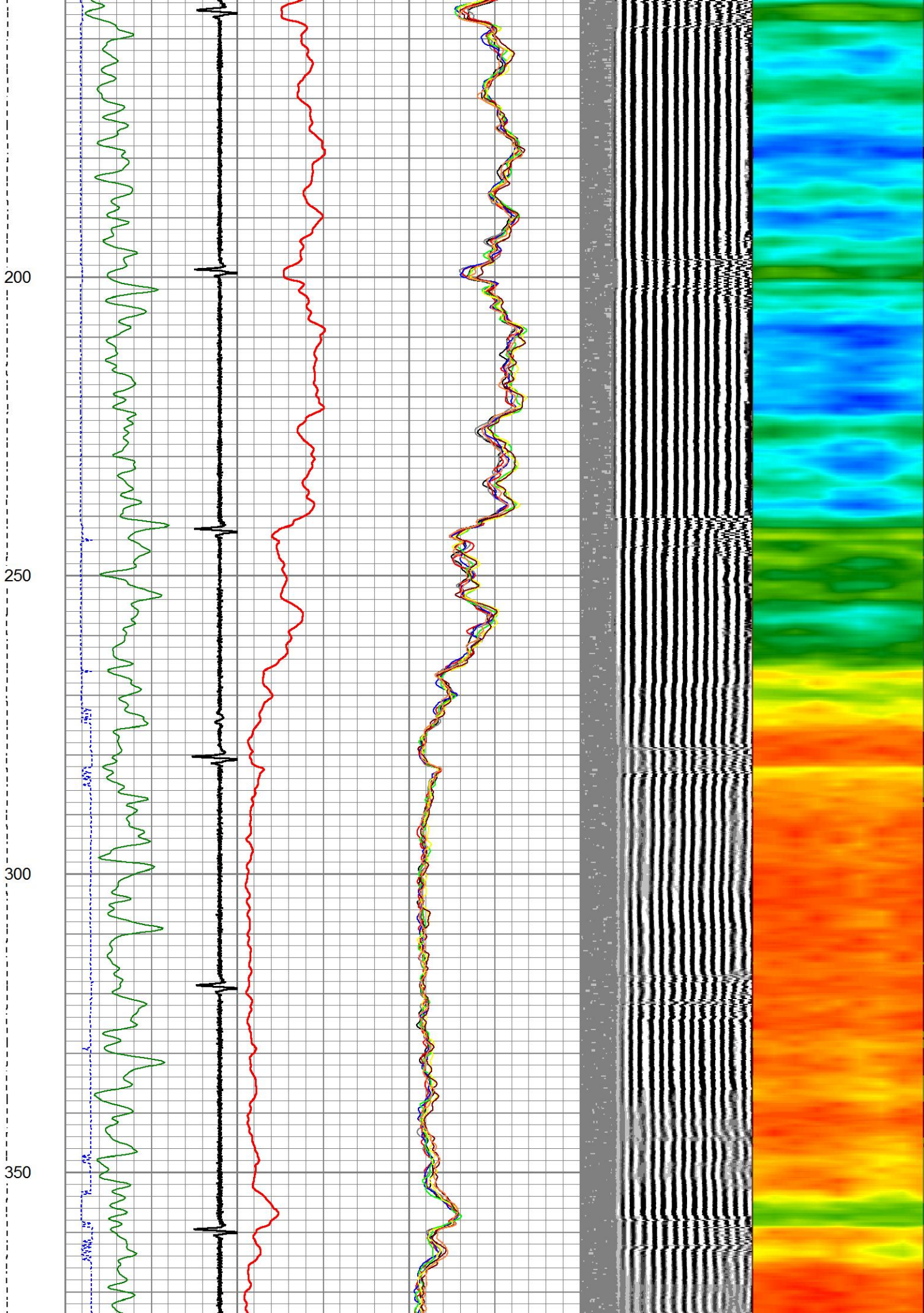
THANK YOU FOR USING PIONEER ENERGY SERVICES!

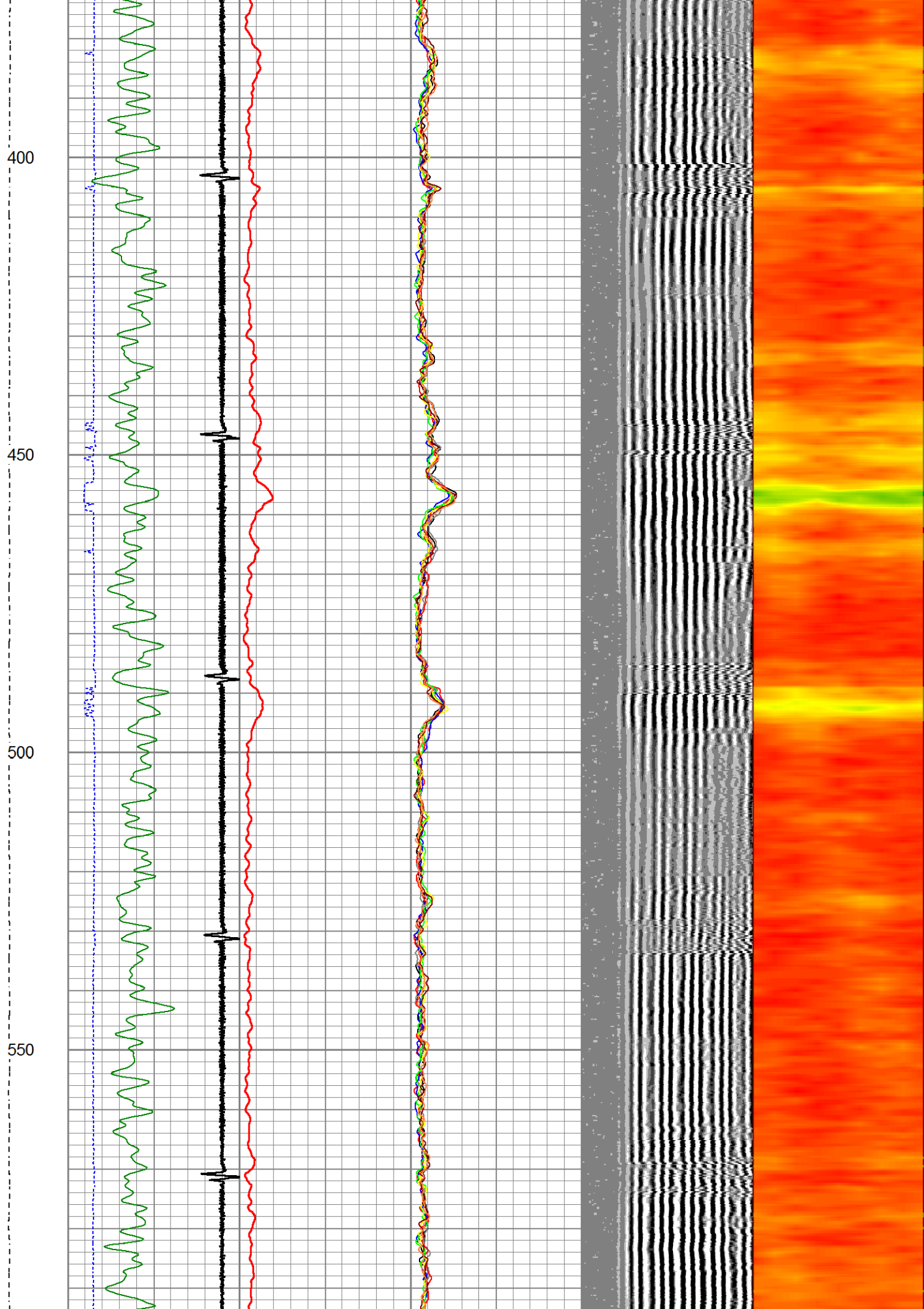
Your Pioneer Energy Services Crew		Tool Data - Services		Serial Number	
Engineer:					
Operator:					
Operator:					
Operator:					

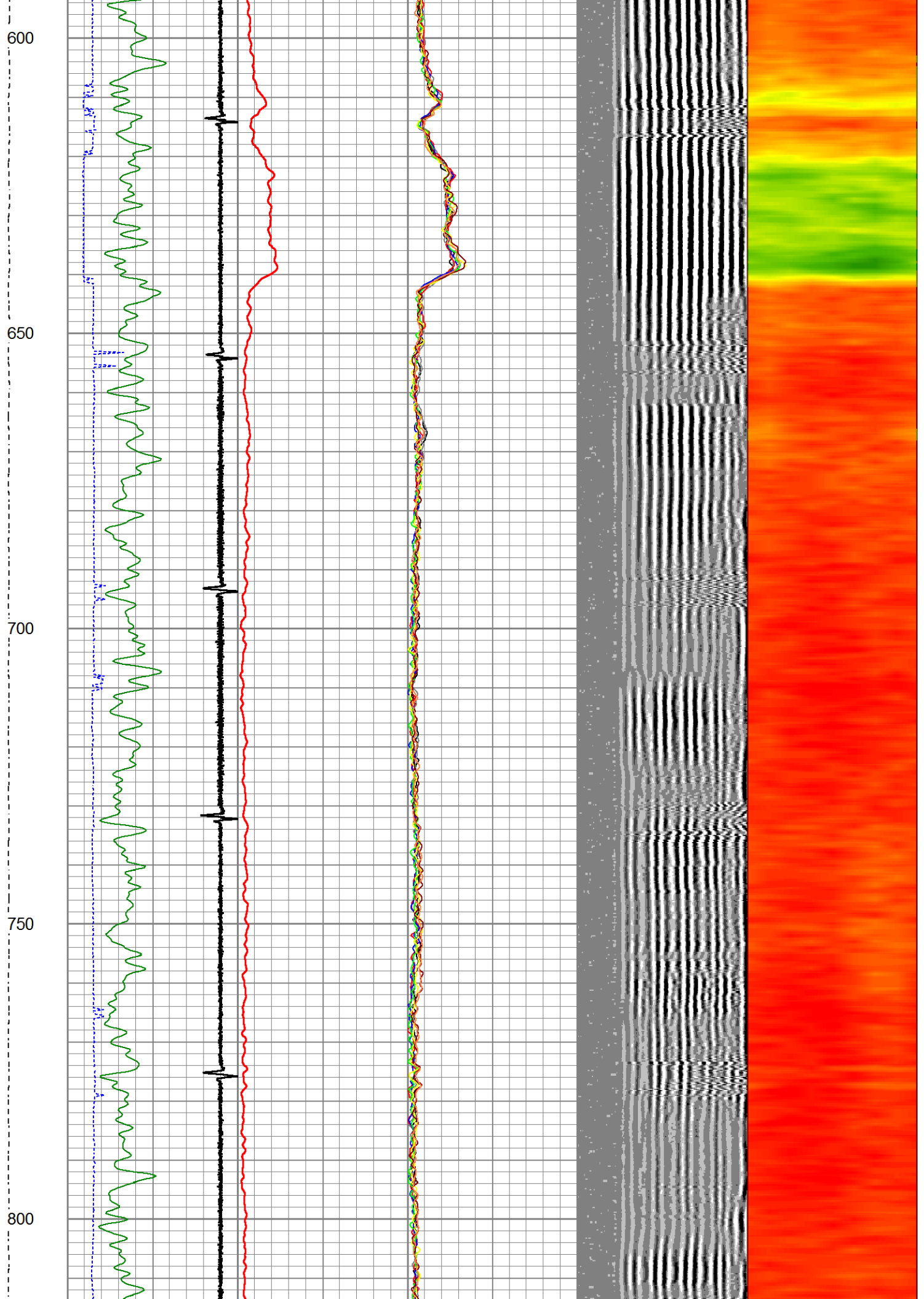
Database File wahlert ac33-67hn.db
Dataset Pathname pass2
Presentation Format ips_rbtcolorcivitas
Dataset Creation Wed Aug 07 08:23:50 2024
Charted by Depth in Feet scaled 1:240

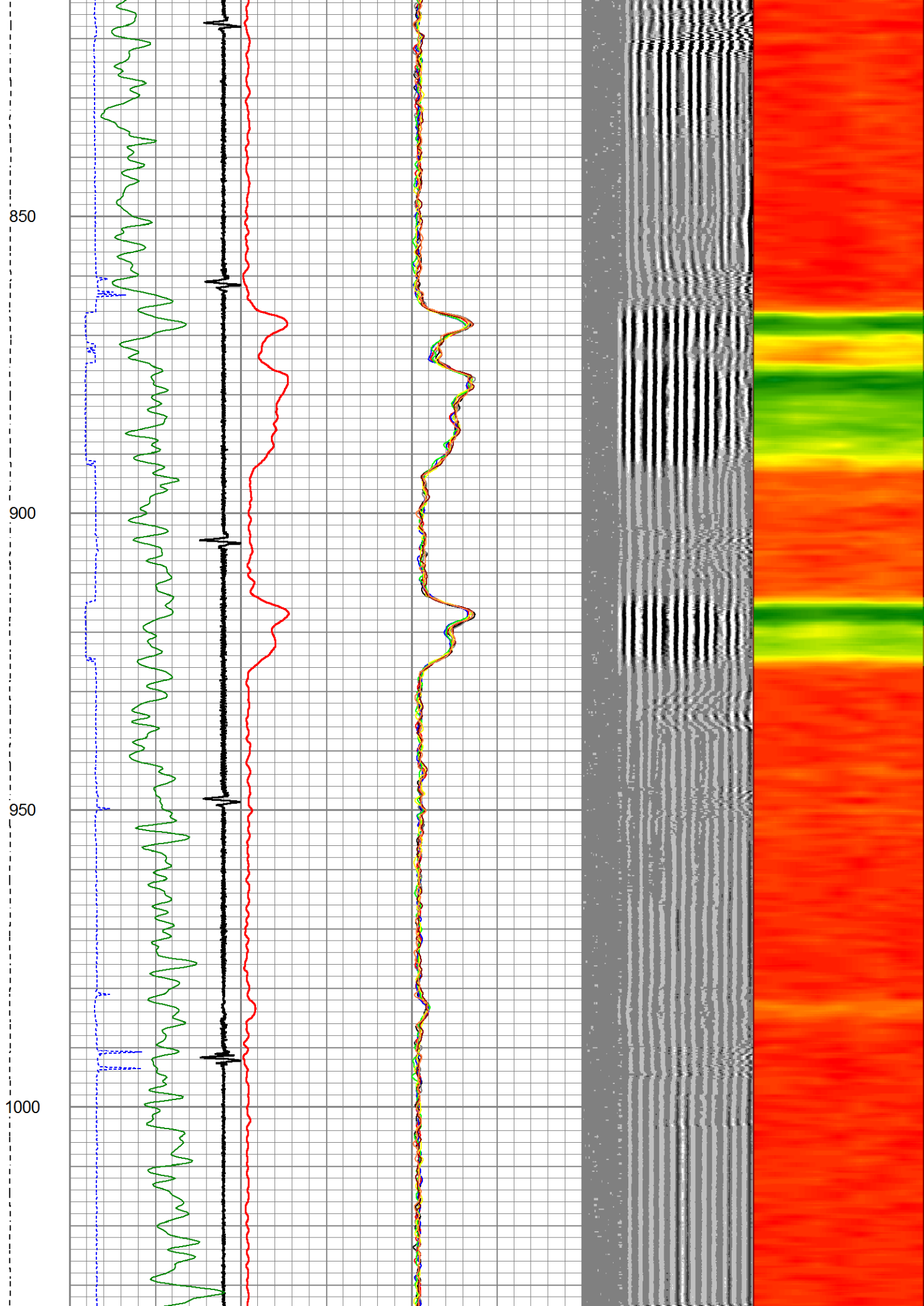
LSPD	200	TT (usec)	1000	0	AMP (mV)	100	0	AMPS1	100	200	VDL (usec)	1200	1	Cement Map	8
(ft/min)	-9	CCL	1				0	AMPS2	100						
0	250	0	GR (GAPI)	150			0	AMPS3	100						
		150	GR (GAPI)	400			0	AMPS4	100						
							0	AMPS5	100						
							0	AMPS6	100						
							0	AMPS7	100						
							0	AMPS8	100						











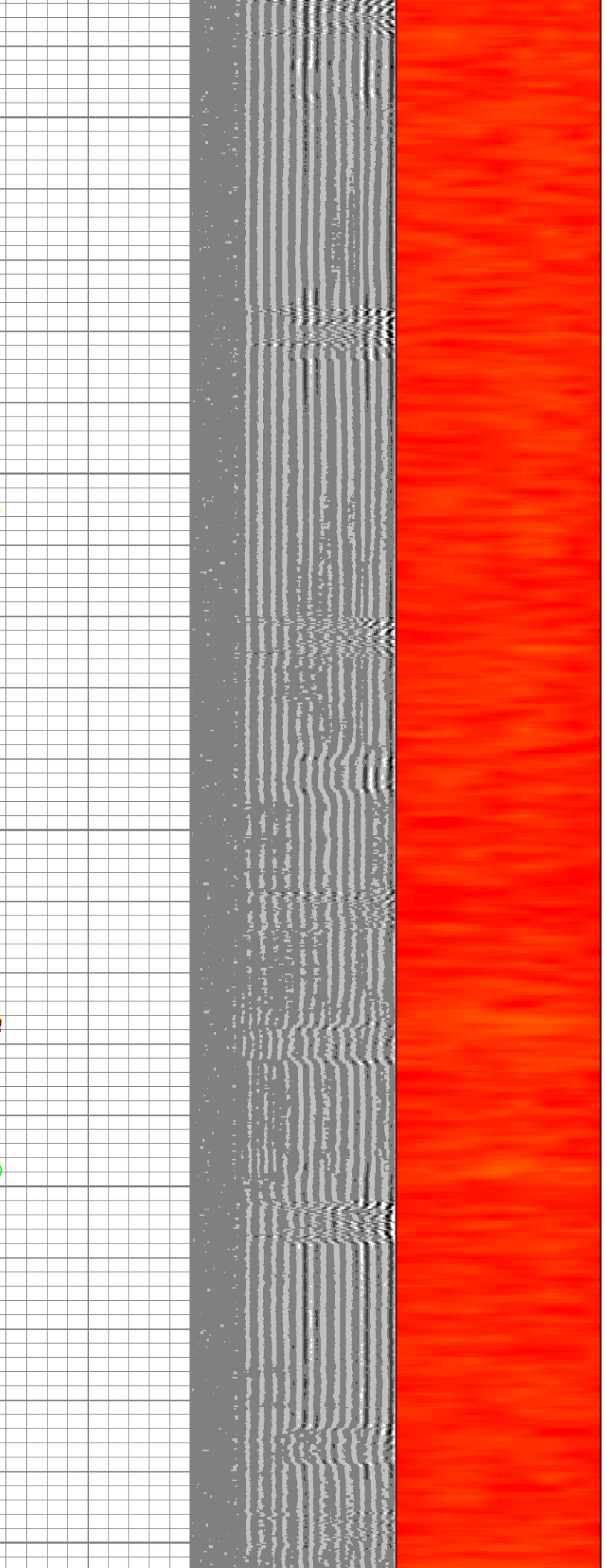
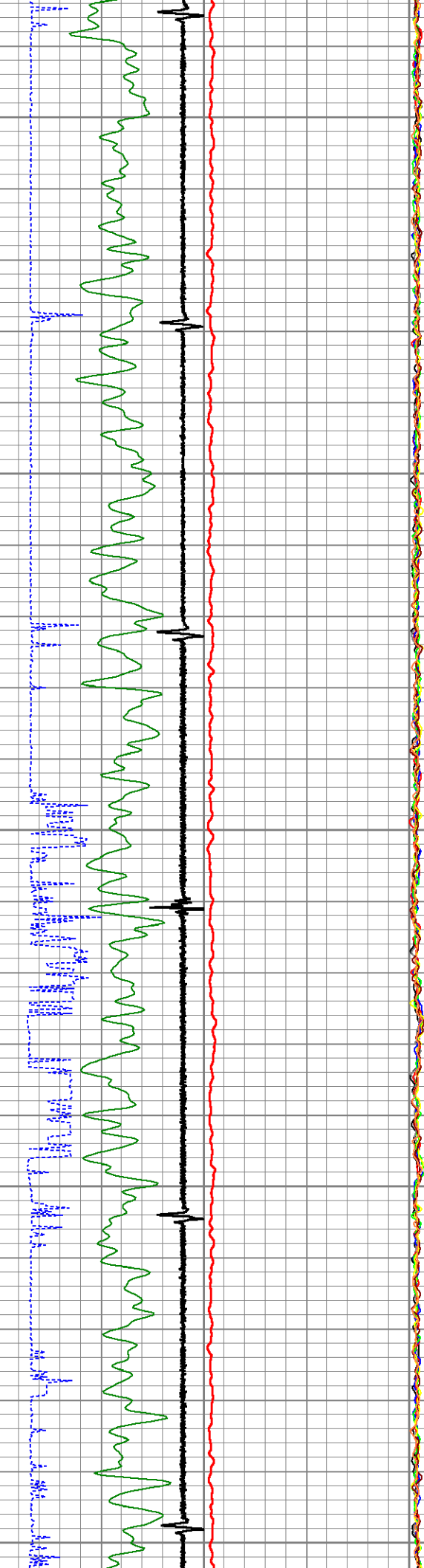
1050

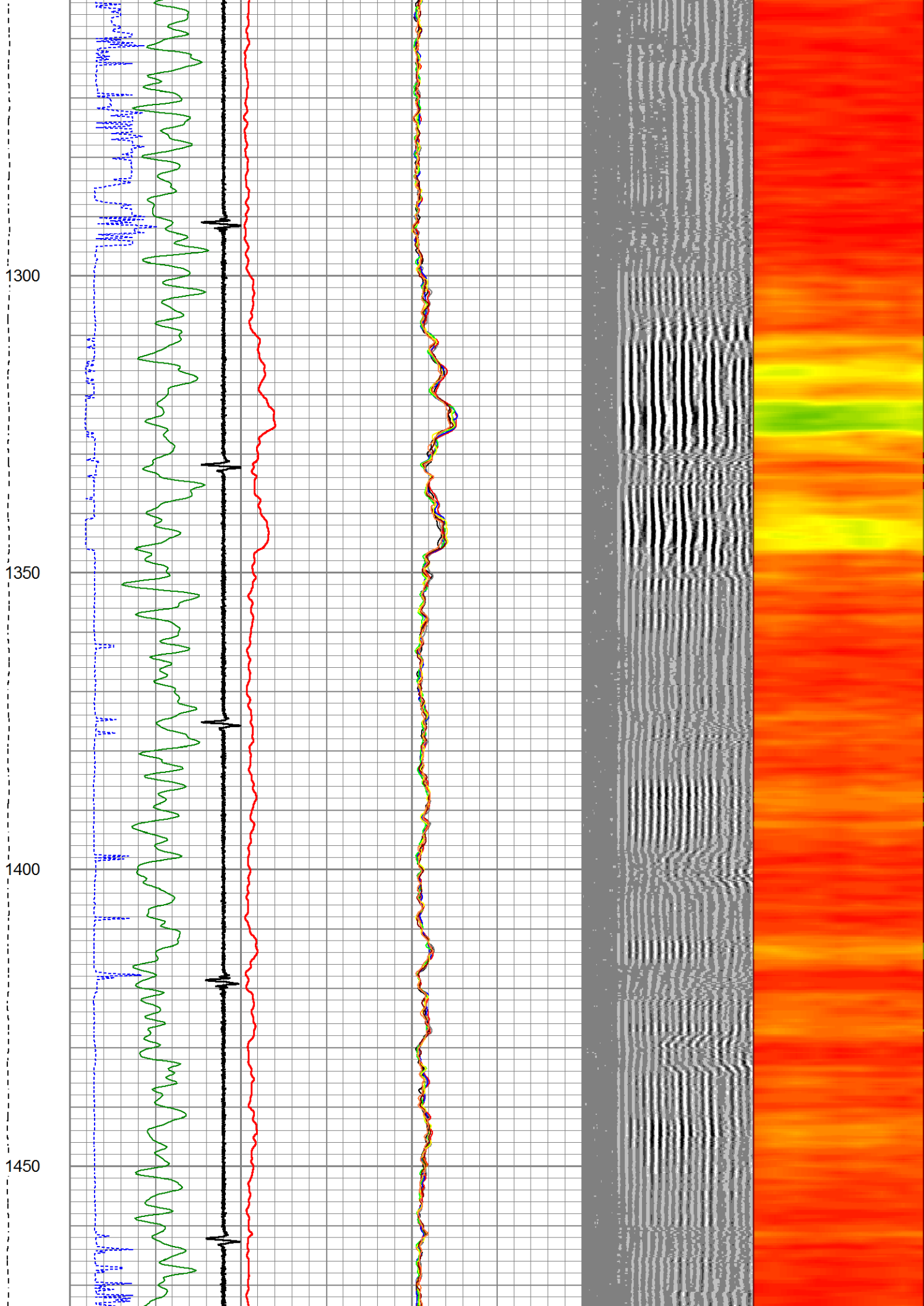
1100

1150

1200

1250



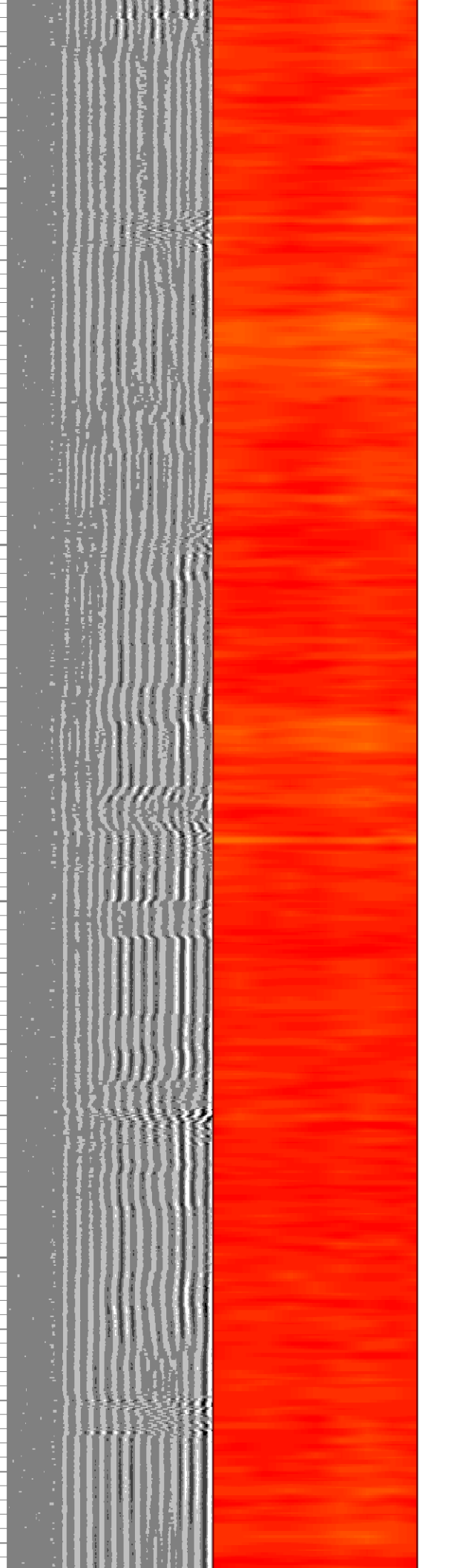
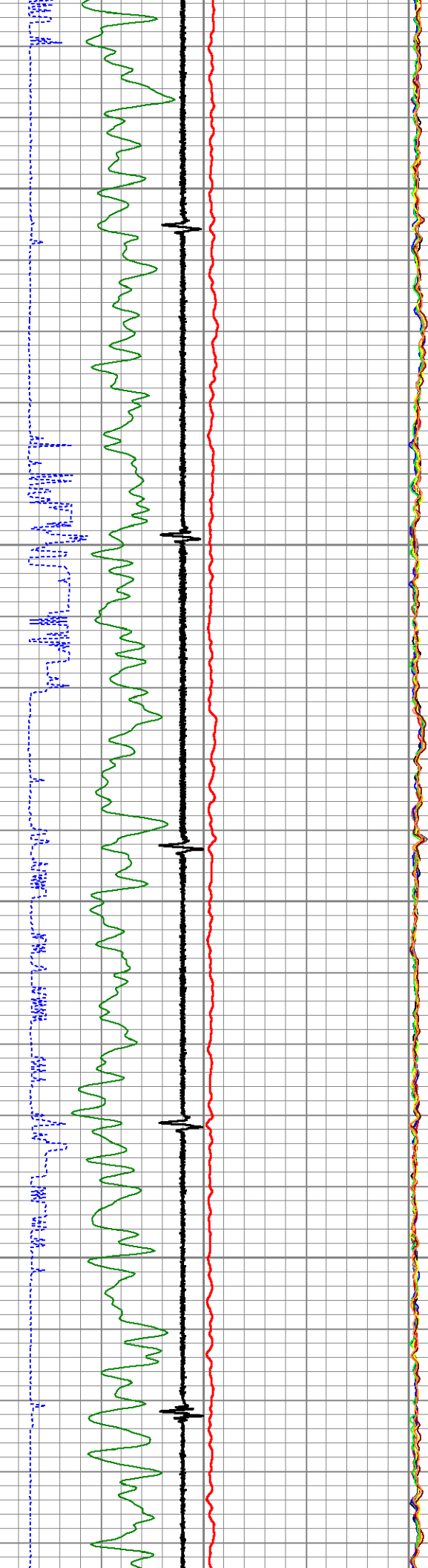


1500

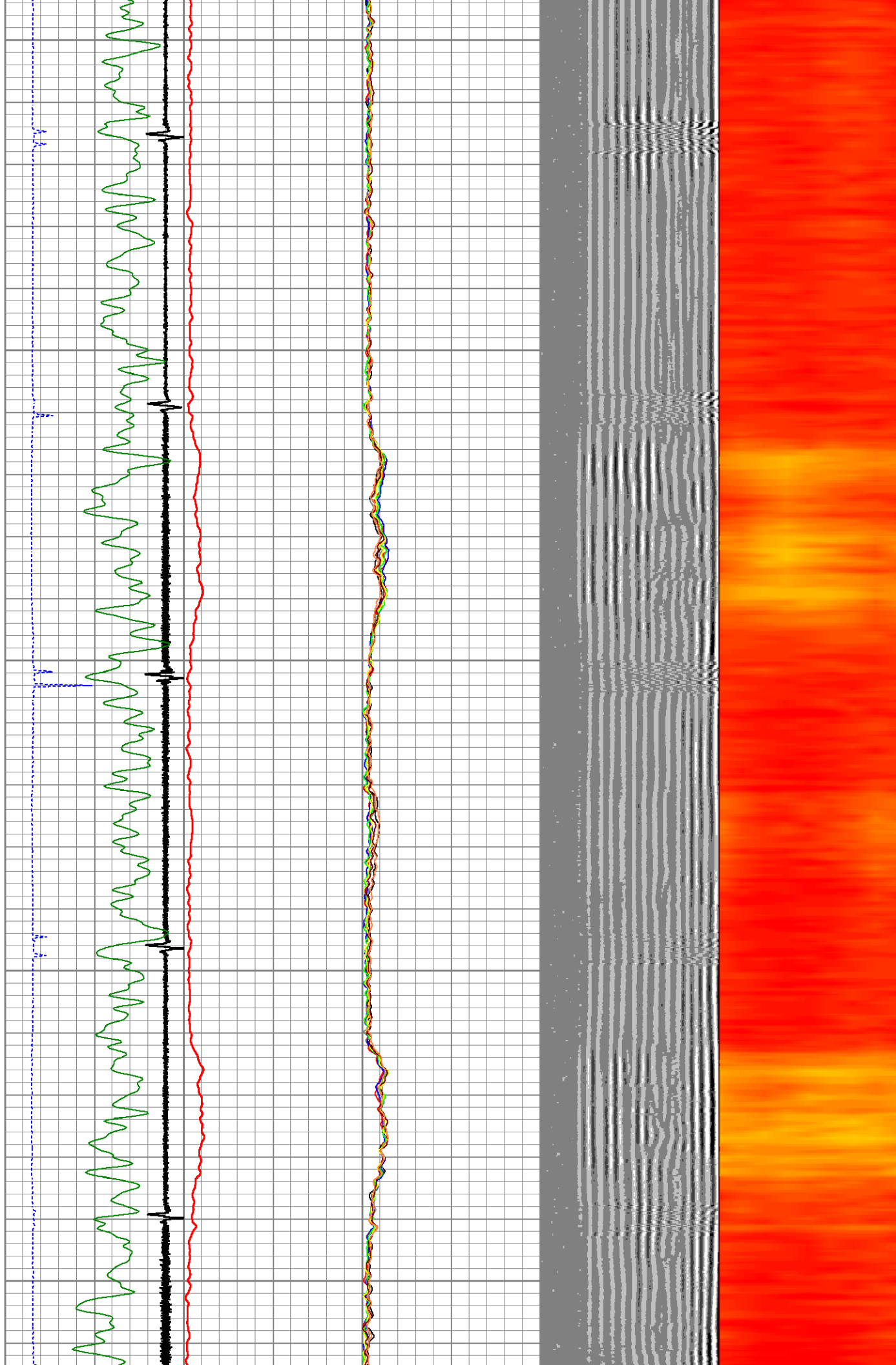
1550

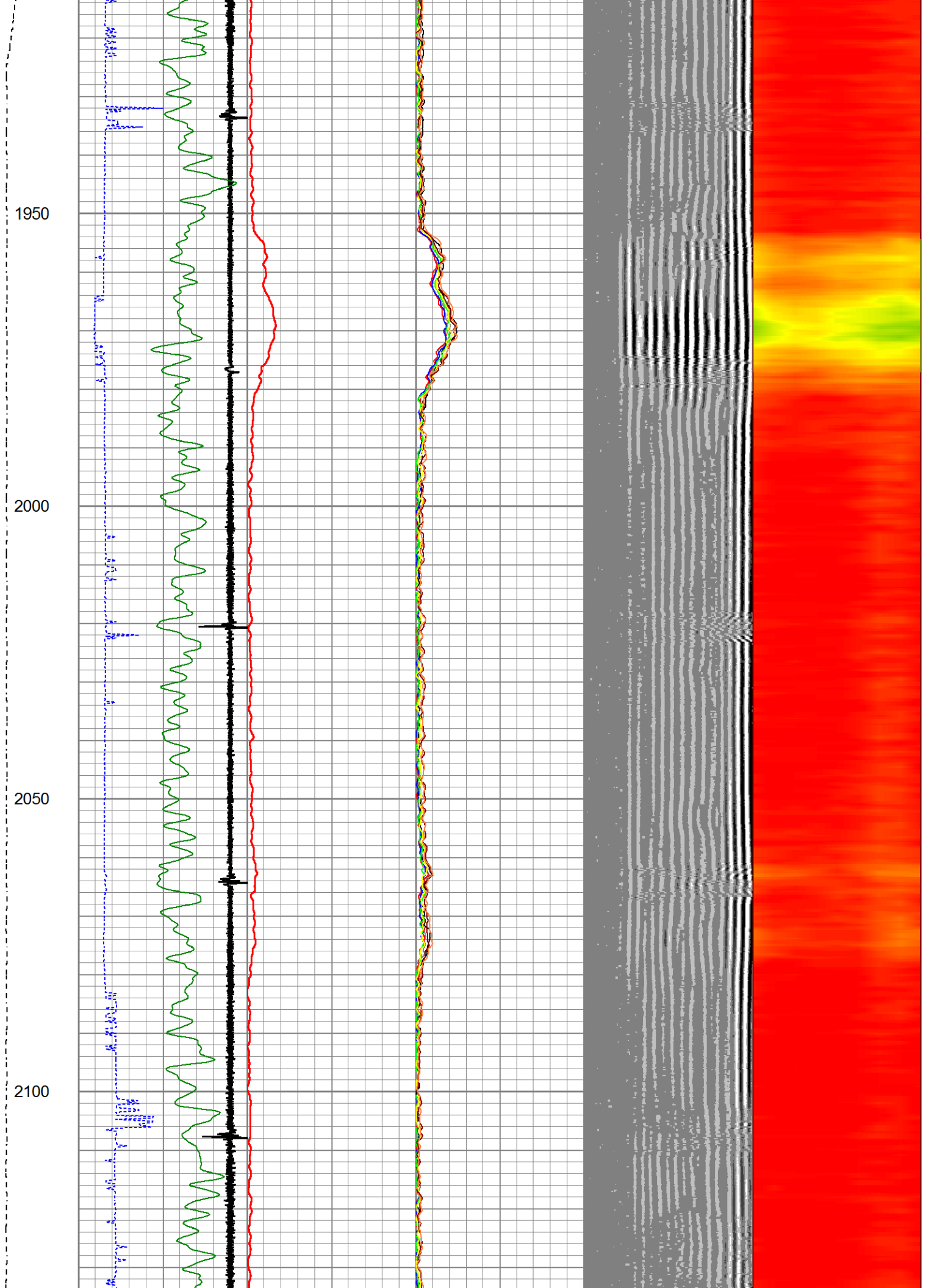
1600

1650



1700
1750
1800
1850
1900





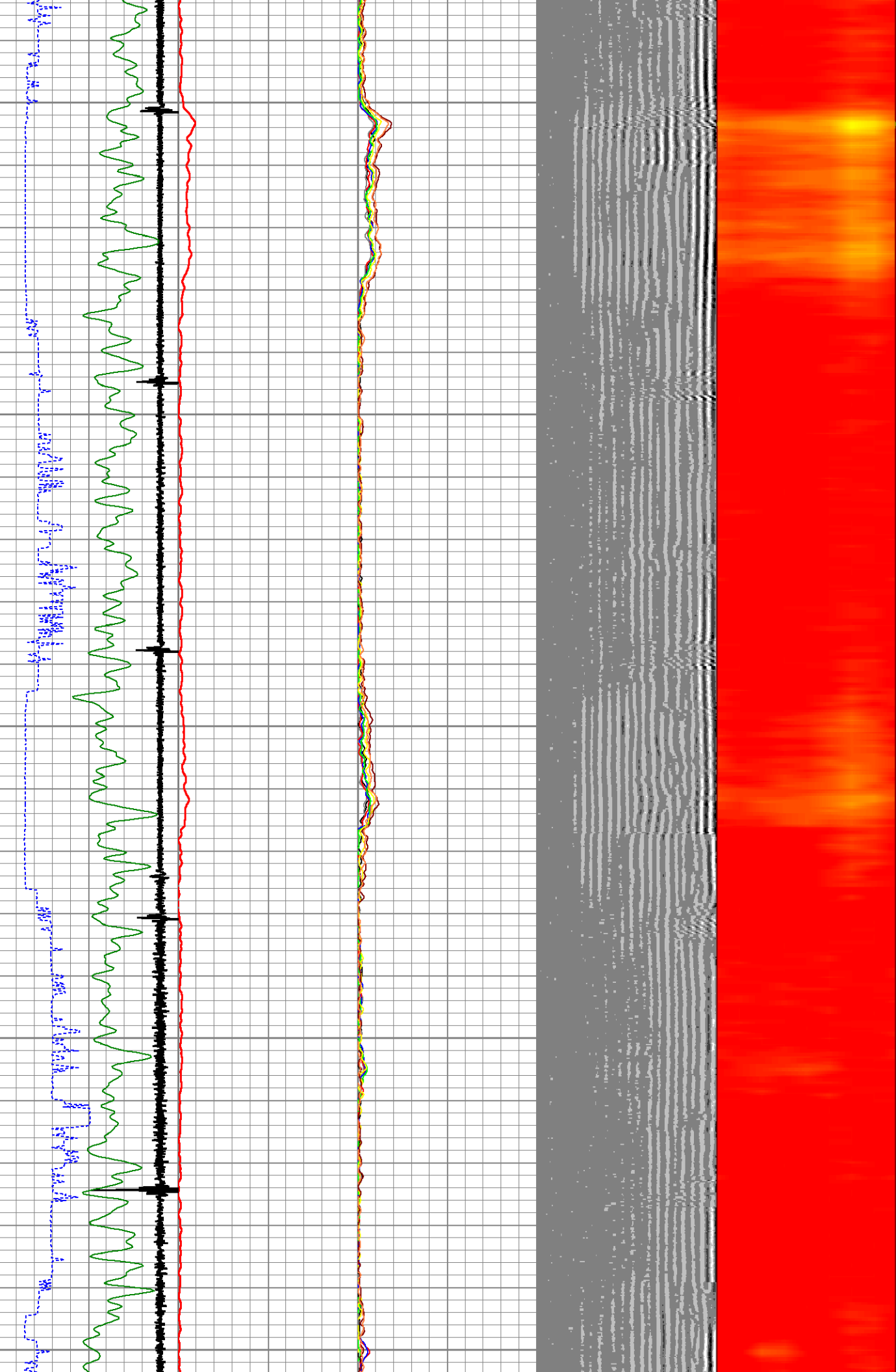
2150

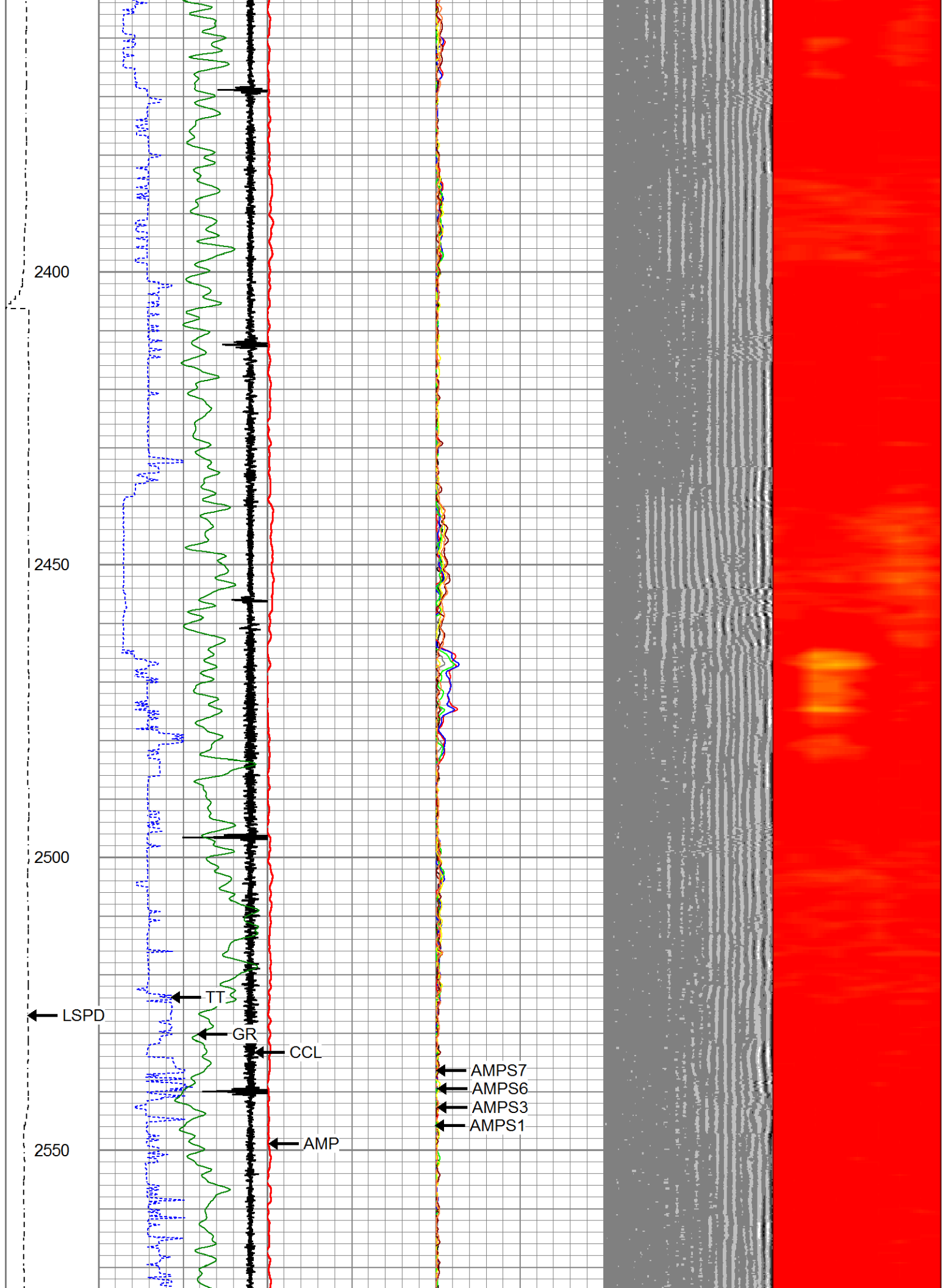
2200

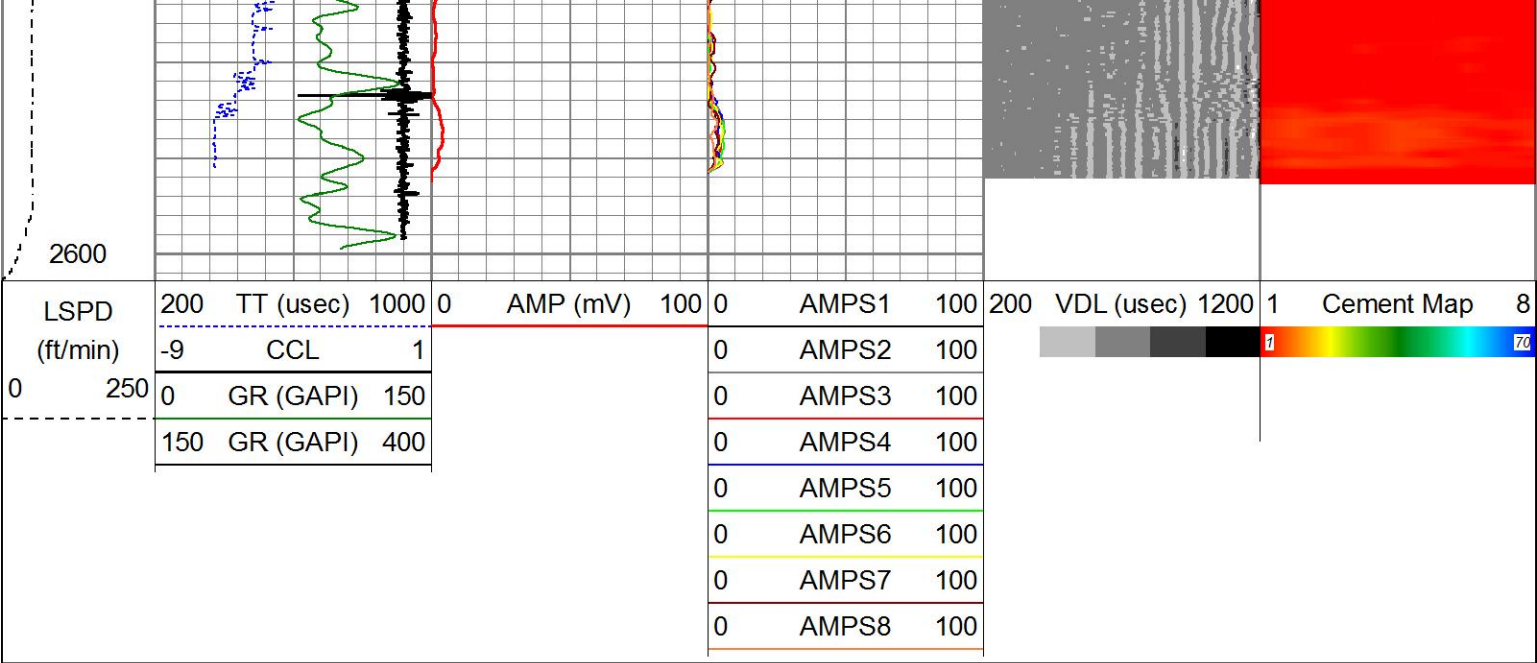
2250

2300

2350







Calibration Report		
Database File	wahlert ac33-67hn.db	
Dataset Pathname	pass2	
Dataset Creation	Wed Aug 07 08:23:50 2024	

Gamma Ray Calibration Report		
Serial Number:	27GRL10-XXXX	
Tool Model:	27GRL10	
Performed:	(Not Performed)	
Calibrator Value:	1.0	GAPI
Background Reading:	0.0	cps
Calibrator Reading:	1.0	cps
Sensitivity:	1.0000	GAPI/cps

Segmented Cement Bond Log Calibration Report		
Serial Number:	Greeley Ext Temp	
Tool Model:	27SBT10	
Calibration Casing Diameter:	4.500	in
Calibration Depth:	72.827	ft

Master Calibration, performed Wed Jul 31 11:17:50 2024:						
	Raw (v)		Calibrated (mv)		Results	
	Zero	Cal	Zero	Cal	Gain	Offset
3'	0.000	1.030	0.800	62.165	59.586	0.800
CAL	0.000	1.032				
5'	0.000	0.861	0.800	62.165	71.234	0.800
SUM						
S1	0.000	1.073	0.000	62.165	57.957	0.000
S2	0.000	1.126	0.000	62.165	55.211	0.000
S3	0.000	1.119	0.000	62.165	55.558	0.000
S4	0.000	1.073	0.000	62.165	57.950	0.000
S5	0.000	0.974	0.000	62.165	63.844	0.000
S6	0.000	0.940	0.000	62.165	66.166	0.000
S7	0.000	0.928	0.000	62.165	66.955	0.000
S8	0.000	1.013	0.000	62.165	61.350	0.000

Internal Reference Calibration, performed (Not Performed):

	Raw (v)		Calibrated (v)		Results	
	Zero	Cal	Zero	Cal	Gain	Offset
CAL	0.000	0.000	0.000	1.032	1.000	0.000

Air Zero Calibration, performed Mon Aug 05 11:02:31 2024:

	Raw (v)		Calibrated (v)		Results
	Zero		Zero		Offset
3'	0.013		0.000		-0.013
5'	0.016		0.000		-0.016
SUM					
S1	0.019		0.000		-0.019
S2	0.017		0.000		-0.017
S3	0.019		0.000		-0.019
S4	0.018		0.000		-0.018
S5	0.018		0.000		-0.018
S6	0.013		0.000		-0.013
S7	0.013		0.000		-0.013
S8	0.016		0.000		-0.016



Company	CHEVRON
Well	WAHLERT AC33-67HN
Field	Wattenberg
County	Weld
State	Colorado