

Tank Battery Closure Checklist

COGCC Rule 911.a.(4) Environmental Site Closure Assessment Field Form

Additional attachments (optional):		Pit Closure		Wellhead Closure		Flowline Closure		Partially Buried Vault Closure
Site Name & COGCC Facility Number: 330872 - Dinner 6-34		Date: 4-5-21						Remediation Project #: 16768
Associated Wells: 1		Age of Site:						Number of Photos Attached: 3
Location: (GPS coordinates of southeast corner)								Estimated Facility Size (acres):
40.339132 / -104.593291								

General Condition of Site: (General observations regarding housekeeping, corrosion, waste management, etc.)

Site in good condition: mostly decommissioned upon arrival. one AST in good condition

USCS Soil Type: silty sandy CLAY - CL	Estimated Depth to Groundwater: 720'
---------------------------------------	--------------------------------------

Hydrocarbon Impacted Soils / Spills: (Note estimated size and if impact appears to be surficial or extends to an unknown depth)

None observed

Salt Crusted Soils or Impacted Vegetation: (Note estimated size and if impact appears to be surficial or extends to an unknown depth)

none observed

Tanks

Tank Contents								
Size (barrels)								
Age								
Construction Material	Steel							
Tank type	AST							
Visual Integrity	Good							
Condition of tank	Good							
PID Readings								
Soil impacts present at valves or hatches?	None observed							
PID Readings	11.1							
Sample taken? Location/ Sample ID#	TB-SS-06 e 0-0.5'							
Photo Number(s)	1							

Other observations regarding tanks:

tank in good condition

Separators

Separator size							
Vertical or Horizontal	Horizontal						
Age							
Soil impacts	None observed						
PID Readings	21.5	35.6					
Sample taken? Location/ Sample ID#	TB-SS-01 e 4'	TB-SS-02 e 4'					
Photo Number(s)	2						

Other observations regarding separators

Third Party Equipment

Type	Meter House						
Age							

Third Party									
Removal Date	Still on site								
Sample taken?	TB-35-03 @ 0-0.25'								
PID Readings	10.5								
Photo Number(s)	1								
Other Facility Equipment									
Equipment type	N/A								
Equipment Condition									
Age									
Soil impacts									
PID Readings									
Sample taken?									
Photo Number(s)									
Other observations regarding other facility or third party equipment:									
Summary									
Was impacted soil identified?									
<input checked="" type="radio"/> No Yes - less than 10 cubic yards Yes - more than 10 cubic yards									
Total number of samples field screened: 6					Total number of samples collected: 2				
Highest PID Reading: 35.6 (TB-55-02 @ 4')					Total number of samples submitted to lab for analysis: 2				
If more than 10 cubic yards of impacted soil were observed:									
Vertical extent:					Estimated spill volume:				
Lateral extent: N/A					Volume of soil removed:				
Is additional investigation required?									
Was groundwater encountered during the investigation?									
<input type="radio"/> No <input type="radio"/> Yes - not impacted or in contact with impacted soils <input type="radio"/> Yes - groundwater impacted and/or in contact with impacted soils									
Measured depth to groundwater:					Was remedial groundwater removal conducted? Yes No				
Date Groundwater was encountered:					Commencement date of removal:				
Sheen on groundwater? Yes No					Volume of groundwater removed prior to sampling:				
Free product observed? Yes No					Volume of groundwater removed post sampling:				
Total number of samples collected:					Total Volume of groundwater removed:				
Total number of samples submitted to lab for analysis:									

Buried or Partially Buried Vessel Closure Checklist

COGCC Rule 911.a.(4) Environmental Site Closure Assessment Field Form

Additional attachments (optional):	Pit Closure	Wellhead Closure	Flowline Closure	Tank Battery Closure 4-5-21
Site Name & COGCC Facility Number: 330872 - Dinner 6-34		Date: 4-5-21		Remediation Project #: 16768
Associated Wells: 1		Age of Site:		Number of Photos Attached: 1
Location: (GPS coordinates of vault or southeastern tank berm for multiple) 40.339123 / -104.594843				Estimated Facility Size (acres):

General Condition of Site: (General observations regarding housekeeping, corrosion, waste management, etc.)
Site in good condition

USCS Soil Type: silty sandy CLAY - CL	Estimated Depth to Groundwater: 720'
--	---

Hydrocarbon Impacted Soils / Spills: (Note estimated size and if impact appears to be surficial or extends to an unknown depth)
None observed

Salt Crusted Soils or Impacted Vegetation: (Note estimated size and if impact appears to be surficial or extends to an unknown depth)
none observed

Buried or Partially Buried Vessels

Tank Contents	Produced Water									
Size (barrels)										
Age										
Construction	Concrete									
Visual Integrity	N/A									
Condition of tank	N/A									
PID Readings										
Condition of dump lines	Dump lines not pulled white on ink: Cole Moore with document									
PID Readings	33.5	35.6	39.0	32.5	65.4					
Sample taken? Location/Sample ID	WV-SS-01 @ 3'	WV-SS-02 @ 3'	WV-SS-03 @ 3'	WV-SS-04 @ 3'	WV-FS-01 @ 6'					
Photo Number(s)	Eagle providing 1									

Other observations regarding partially buried vessels:
N/A

Summary

Was impacted soil identified?		<input checked="" type="radio"/> No		Yes - less than 10 cubic yards		Yes - more than 10 cubic yards	
Total number of samples field screened: 5				Total number of samples collected: 2			
Highest PID Reading: 65.4 (WV-FS-01 @ 6')				Total number of samples submitted to lab for analysis: 2			
If more than 10 cubic yards of impacted soil were observed:							
Vertical extent:				Estimated spill volume:			
Lateral extent: N/A				Volume of soil removed:			
Is additional investigation required?							
Was groundwater encountered during the investigation?							
No		Yes - not impacted or in contact with impacted soils		Yes - groundwater impacted and/or in contact with impacted soils			
Measured depth to groundwater:				Was remedial groundwater removal conducted? Yes No			
Date Groundwater was encountered:				Commencement date of removal:			
Seen on groundwater? Yes		No		Volume of groundwater removed prior to sampling:			
Free product observed? Yes		No		Volume of groundwater removed post sampling:			
Total number of samples collected:				Total Volume of groundwater removed:			
Total number of samples submitted to lab for analysis:							



FIGURES

Figure 1: Topographic Site Location Map

Figure 2: Aerial Site Location Map

Figure 3: Soil Analytical Map

Figure 4: Polycyclic Aromatic Hydrocarbons Map

Figure 5: Confirmation Soil Analytical Map



Topographic Site Location Map

Dinner #6-34
 Decommissioning Assessment
 40.339093 / -104.593310
 SE¼ SW¼ SEC.6 T4N R64W 6PM
 Weld County, Colorado
 Location ID 330872
 Remediation # 16768



EAGLE
 ENVIRONMENTAL
 CONSULTING, INC.

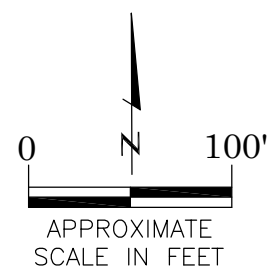
Source: USGS 7.5 Minute Topographic
 Map, Valley View School, CO
 Quadrangle 2019

Figure 1



LEGEND

- APPROXIMATE TANK BATTERY (DECOMMISSIONED)
- ASSOCIATED BURIED VAULT (REMOVED)
- ASSOCIATED SEPARATOR CONTAINMENT AREA (DECOMMISSIONED)



AERIAL SITE LOCATION MAP
 DINNER #6-34
 CLOSURE ASSESSMENT
 40.339093 / -104.593310
 SE1/4 SW1/4 SEC.6 T4N R64W 6PM
 WELD COUNTY, COLORADO
 LOCATION ID 330872
 REMEDIATION # 16768

DATE: 05/21/21	
FIG. NO. 2	DRAWN BY: MM



EAGLE
ENVIRONMENTAL
CONSULTING, INC.
 8000 W 44th Ave, Wheat Ridge, CO 80033
 Ph: 303-433-0479 • F: 303-325-5449

LEGEND

- APPROXIMATE ASSESSMENT BOUNDARIES
- APPROXIMATE DUMPLINE PATH TO WATER VAULT
- SS-02 APPROXIMATE LOCATION OF SOIL SAMPLES FIELD SCREENED, ONLY, WITH PHOTOIONIZATION DETECTOR (PID)
- SS-02 APPROXIMATE LOCATION OF SOIL SAMPLES SUBMITTED FOR LABORATORY ANALYSIS

PARAMETERS

SAMPLE LOCATION

DATE
DEPTH (FEET)
B = BENZENE (mg/kg)
T = TOLUENE (mg/kg)
E = ETHYLBENZENE (mg/kg)
X = TOTAL XYLENES (mg/kg)
G = TPH-GRO (mg/kg)
D = TPH-DRO (mg/kg)
R = TPH-RRO (mg/kg)
1,2,4-TMB = 1,2,4 TRIMETHYLBENZENE (mg/kg)
1,3,5-TMB = 1,3,5 TRIMETHYLBENZENE (mg/kg)
Brn= BORON (mg/L)
EC = SPECIFIC CONDUCTANCE (mmhos/cm)
SAR= SODIUM ADSORPTION RATIO
pH = pH (pH UNITS)

mg/kg = MILLIGRAMS PER KILOGRAM
mg/L = MILLIGRAMS PER LITER
NA = NOT ANALYZED

TPH-GRO = TOTAL PETROLEUM HYDROCARBONS - GASOLINE RANGE ORGANICS
TPH-DRO = TOTAL PETROLEUM HYDROCARBONS - DIESEL RANGE ORGANICS
TPH-RRO = TOTAL PETROLEUM HYDROCARBONS - RESIDUAL RANGE ORGANICS

NOTE: VALUES PRESENTED WITH A LESS THAN SYMBOL (<) DID NOT CONTAIN CONCENTRATIONS AT OR ABOVE LABORATORY DETECTION LIMITS

VALUES PRESENTED IN **BOLD** VALUES CONTAIN CONCENTRATIONS EXCEEDING COGCC TABLE 915-1 REGULATORY LIMITS

COGCC = COLORADO OIL AND GAS CONSERVATION COMMISSION

SOIL ANALYTICAL MAP

DINNER #6-34
CLOSURE ASSESSMENT
40.339093 / -104.593310
SE1/4 SW1/4 SEC.6 T4N R64W 6PM
WELD COUNTY, COLORADO
LOCATION ID 330872
REMEDATION # 16768

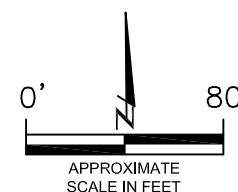
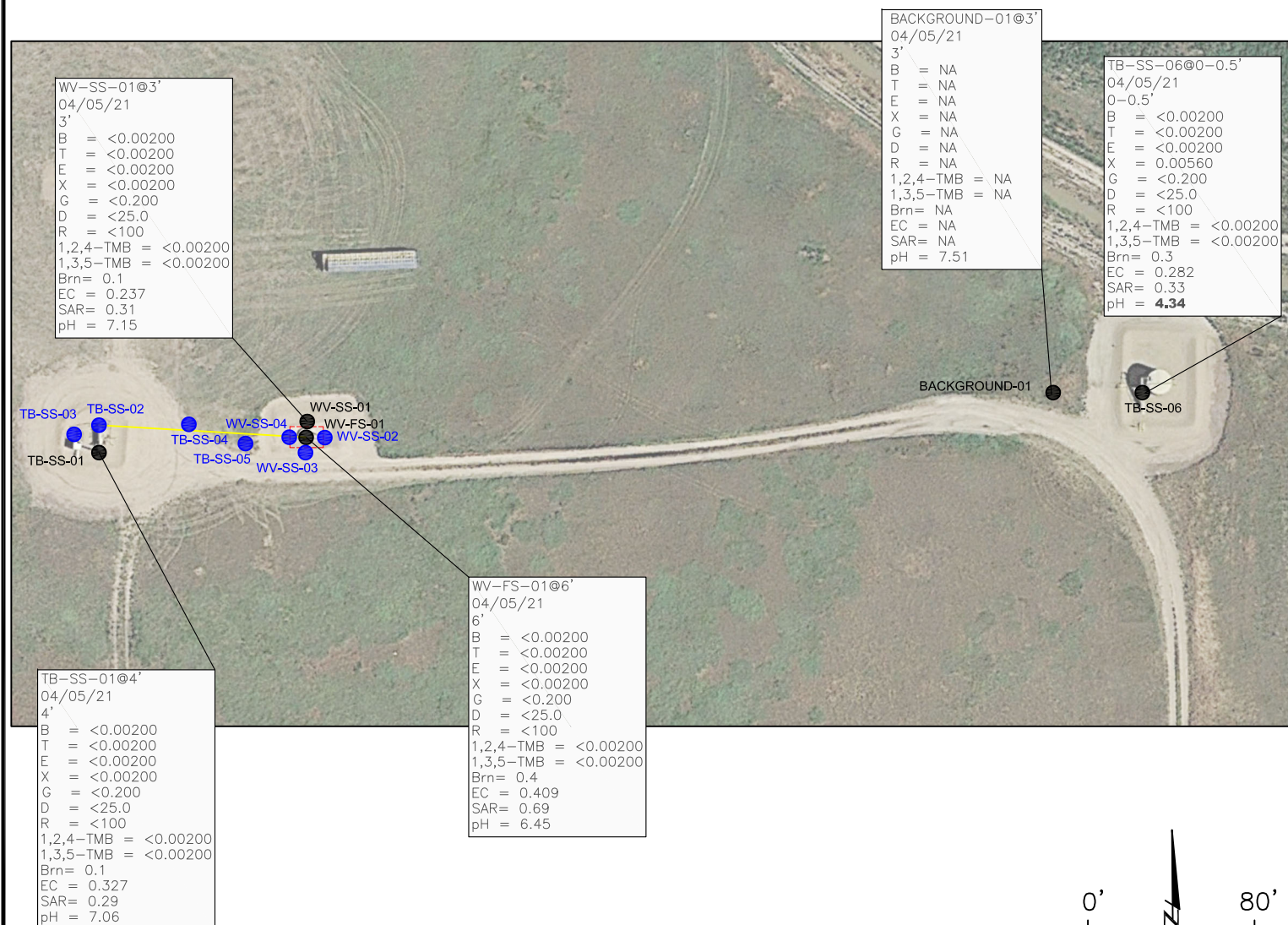
DATE:
06/11/21

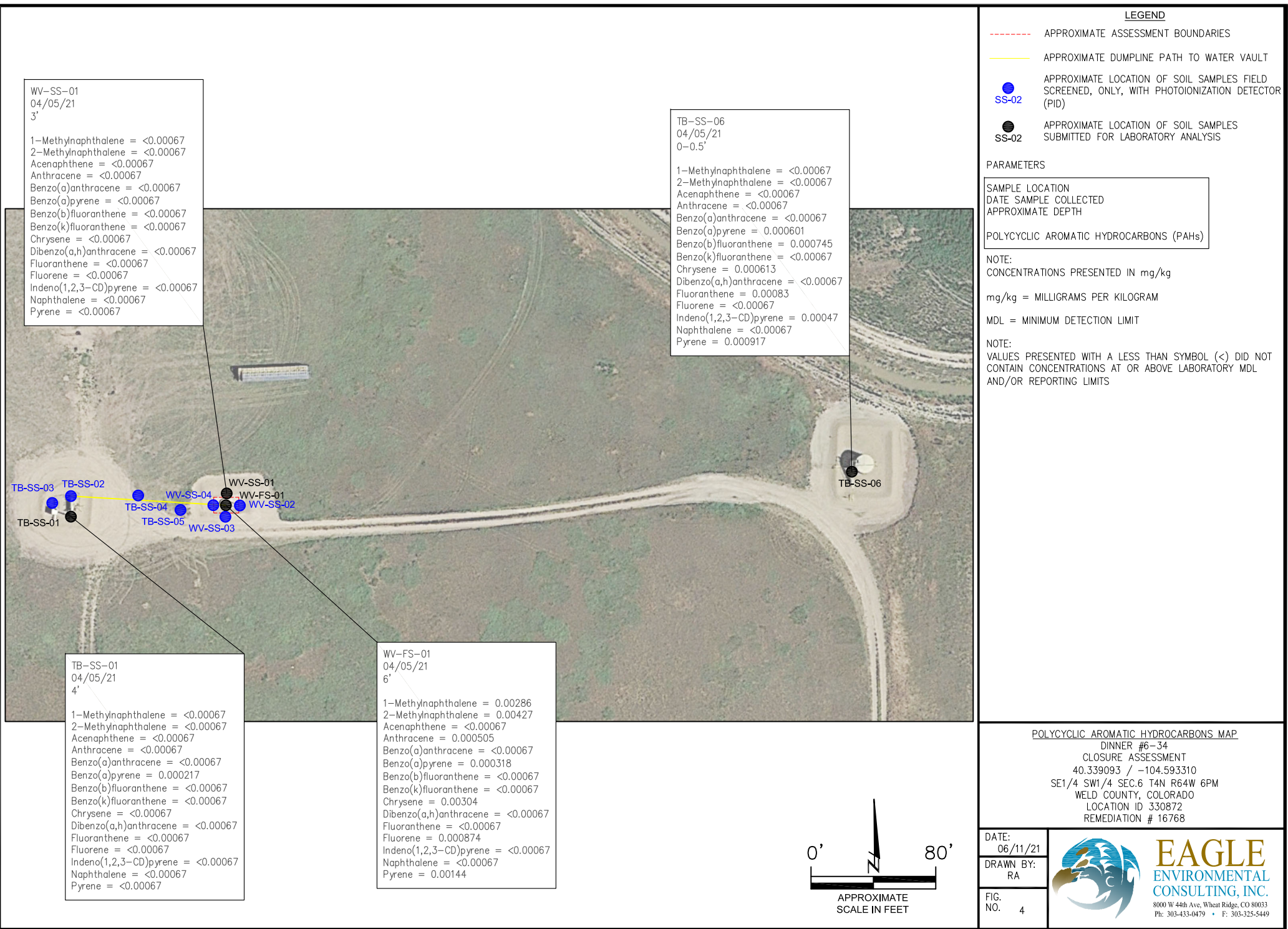
DRAWN BY:
RA

FIG.
NO. 3



EAGLE
ENVIRONMENTAL
CONSULTING, INC.
8000 W 44th Ave, Wheat Ridge, CO 80033
Ph: 303-433-0479 • F: 303-325-5449





LEGEND

- APPROXIMATE ASSESSMENT BOUNDARIES
- APPROXIMATE DUMPLINE PATH TO WATER VAULT
- SS-02 APPROXIMATE LOCATION OF SOIL SAMPLES FIELD SCREENED, ONLY, WITH PHOTOIONIZATION DETECTOR (PID)
- SS-02 APPROXIMATE LOCATION OF SOIL SAMPLES SUBMITTED FOR LABORATORY ANALYSIS

PARAMETERS

SAMPLE LOCATION
DATE SAMPLE COLLECTED
APPROXIMATE DEPTH
POLYCYCLIC AROMATIC HYDROCARBONS (PAHs)

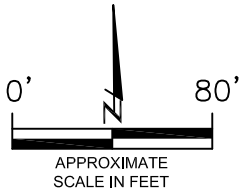
NOTE:
CONCENTRATIONS PRESENTED IN mg/kg
mg/kg = MILLIGRAMS PER KILOGRAM
MDL = MINIMUM DETECTION LIMIT
NOTE:
VALUES PRESENTED WITH A LESS THAN SYMBOL (<) DID NOT CONTAIN CONCENTRATIONS AT OR ABOVE LABORATORY MDL AND/OR REPORTING LIMITS

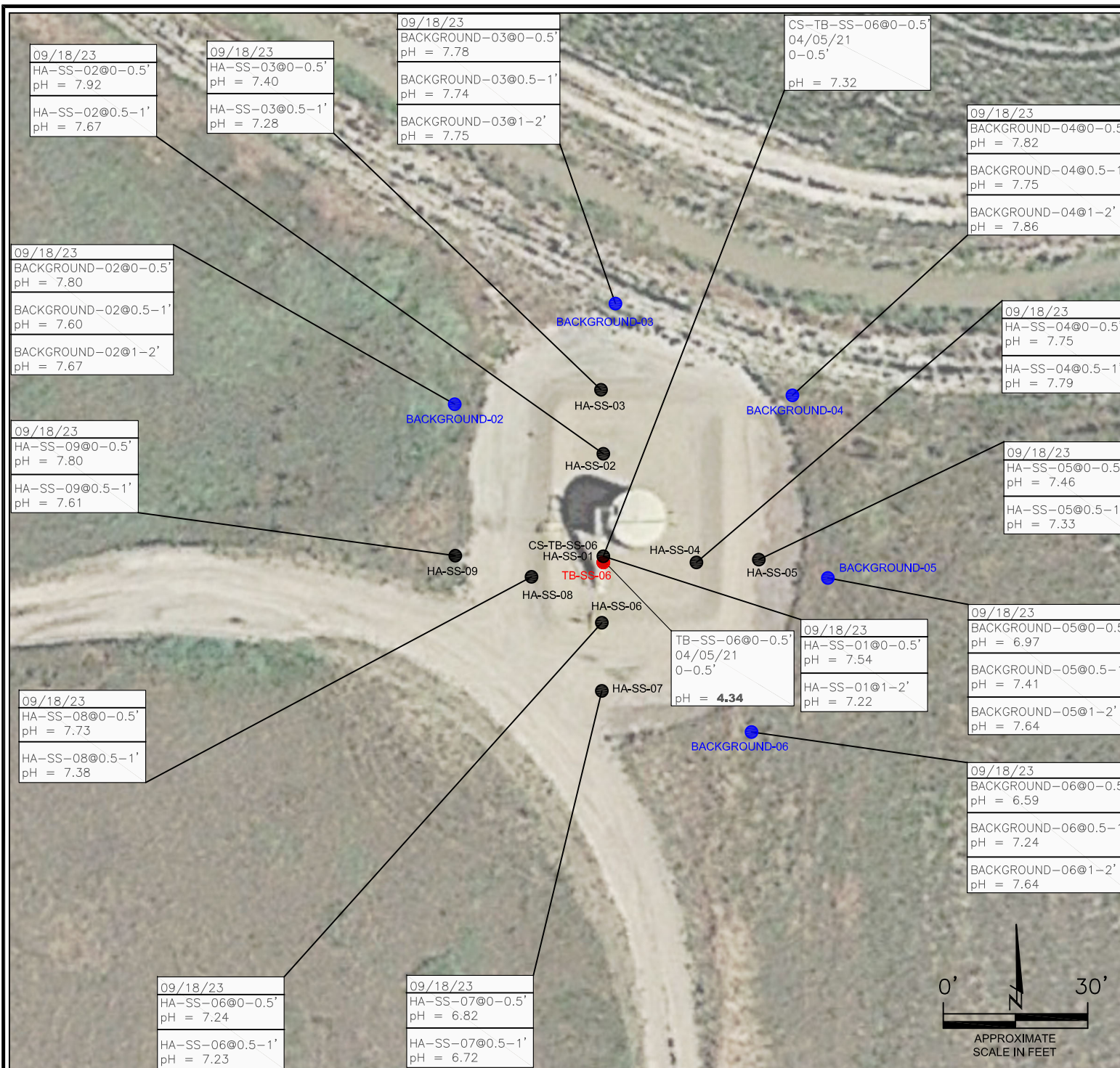
POLYCYCLIC AROMATIC HYDROCARBONS. MAP
DINNER #6-34
CLOSURE ASSESSMENT
40.339093 / -104.593310
SE1/4 SW1/4 SEC.6 T4N R64W 6PM
WELD COUNTY, COLORADO
LOCATION ID 330872
REMEDATION # 16768

DATE:
06/11/21
DRAWN BY:
RA
FIG.
NO. 4



EAGLE
ENVIRONMENTAL
CONSULTING, INC.
8000 W 44th Ave, Wheat Ridge, CO 80033
Ph: 303-433-0479 • F: 303-325-5449





LEGEND

- SS-02** CONFIRMATION SAMPLE LOCATION WITHIN ECMC TABLE 915-1 REGULATORY RANGE
- SS-02** BACKGROUND CONFIRMATION SAMPLE LOCATION WITHIN ECMC TABLE 915-1 REGULATORY RANGE
- SS-02** PREVIOUS SOIL SAMPLE LOCATION OUTSIDE ECMC TABLE 915-1 REGULATORY RANGE

PARAMETERS

SAMPLE LOCATION
DATE
DEPTH (FEET)
pH = pH (pH UNITS)

VALUES PRESENTED IN **BOLD** ARE OUTSIDE OF ECMC REGULATORY RANGE.

ECMC = ENERGY & CARBON MANAGEMENT COMMISSION

CONFIRMATION SOIL ANALYTICAL MAP
DINNER #6-34
CLOSURE ASSESSMENT
40.339093 / -104.593310
SE¼ SW¼ SEC.6 T4N R64W 6PM
WELD COUNTY, COLORADO
LOCATION ID 330872
REMEDIATION # 16768

FIGURE NO. 5	 EAGLE ENVIRONMENTAL CONSULTING, LLC 8000 W 44th Ave, Wheat Ridge, CO 80033 Ph: 303-433-0479 • F: 303-325-5449
DRAWN BY: RA	



TABLES

Table 1: PID Reading Summary

Table 2: Soil Analytical Results Summary

Table 3: PAH Analytical Results Summary

TABLE 1
PID READING SUMMARY
DINNER #6-34
CLOSURE ASSESSMENT
40.339093 / -104.593310
SE1/4 SW1/4 SEC.6 T4N R64W 6PM
WELD COUNTY, COLORADO
LOCATION ID 330872
REMEDIATION # 16768

Sample Location (Latitude/Longitude)	Date	Approximate Depth (feet)	PID Reading (ppm-v)	Lab Submission (Y/N)
TB-SS-01 @ 4' (40.339097 / -104.595197)	04/05/21	4	21.5	Y
TB-SS-02 @ 4' (40.339128 / -104.595198)	04/05/21	4	35.6	N
TB-SS-03 @ 0-0.25' (40.339124 / -104.595234)	04/05/21	0-0.25	10.5	N
TB-SS-04 @ 0-0.25' (40.339136 / -104.595044)	04/05/21	0-0.25	16.6	N
TB-SS-05 @ 2.5' (40.339113 / -104.594394)	04/05/21	2.5	23.1	N
TB-SS-06 @ 0-0.5' (40.339175 / -104.593369)	04/05/21	0-0.5	11.1	Y
WV-SS-01 @ 3' (40.339139 / -104.594845)	04/05/21	3	53.5	Y
WV-SS-02 @ 3' (40.339122 / -104.594821)	04/05/21	3	35.6	N
WV-SS-03 @ 3' (40.339109 / -104.594844)	04/05/21	3	39.0	N
WV-SS-04 @ 3' (40.339123 / -104.594871)	04/05/21	3	32.5	N
WV-FS-01 @ 6' (40.339122 / -104.594845)	04/05/21	6	65.4	Y

TABLE 1
PID READING SUMMARY
DINNER #6-34
CLOSURE ASSESSMENT
40.339093 / -104.593310
SE1/4 SW1/4 SEC.6 T4N R64W 6PM
WELD COUNTY, COLORADO
LOCATION ID 330872
REMEDIATION # 16768

Sample Location (Latitude/Longitude)	Date	Approximate Depth (feet)	PID Reading (ppm-v)	Lab Submission (Y/N)
Background-01 @ 3' (40.339185 / -104.593552)	04/05/21	3	17.8	Y
Background-02 @ 0-0.5' (40.339269 / -104.593479)	09/18/23	0-0.5	46.1	Y
Background-02 @ 0.5-1' (40.339269 / -104.593479)	09/18/23	0.5-1	46.2	Y
Background-02 @ 1-2' (40.339269 / -104.593479)	09/18/23	1-2	35.2	Y
Background-03 @ 0-0.5' (40.339321 / -104.593356)	09/18/23	0-0.5	29.4	Y
Background-03 @ 0.5-1' (40.339321 / -104.593356)	09/18/23	0.5-1	38.2	Y
Background-03 @ 1-2' (40.339321 / -104.593356)	09/18/23	1-2	40.6	Y
Background-04 @ 0-0.5' (40.339259 / -104.593217)	09/18/23	0-0.5	42.8	Y
Background-04 @ 0.5-1' (40.339259 / -104.593217)	09/18/23	0.5-1	36.7	Y
Background-04 @ 1-2' (40.339259 / -104.593217)	09/18/23	1-2	40.4	Y
Background-05 @ 0-0.5' (40.339163 / -104.593213)	09/18/23	0-0.5	32.4	Y
Background-05 @ 0.5-1' (40.339163 / -104.593213)	09/18/23	0.5-1	2.8	Y
Background-05 @ 1-2' (40.339163 / -104.593213)	09/18/23	1-2	3.2	Y
Background-06 @ 0-0.5' (40.339077 / -104.593275)	09/18/23	0-0.5	30.8	Y
Background-06 @ 0.5-1' (40.339077 / -104.593275)	09/18/23	0.5-1	1.9	Y
Background-06 @ 1-2' (40.339077 / -104.593275)	09/18/23	1-2	2.4	Y

TABLE 1
PID READING SUMMARY
DINNER #6-34
CLOSURE ASSESSMENT
40.339093 / -104.593310
SE1/4 SW1/4 SEC.6 T4N R64W 6PM
WELD COUNTY, COLORADO
LOCATION ID 330872
REMEDIATION # 16768

Sample Location (Latitude/Longitude)	Date	Approximate Depth (feet)	PID Reading (ppm-v)	Lab Submission (Y/N)
CS-TB-SS-06 @ 0-0.5' (40.339175 / -104.593369)	09/18/23	0-0.5	50.7	Y
HA-SS-01 @ 0.5-1' (40.339175 / -104.593369)	09/18/23	0.5-1	6.1	Y
HA-SS-01 @ 1-2' (40.339175 / -104.593369)	09/18/23	1-2	3.5	Y
HA-SS-02 @ 0-0.5' (40.339221 / -104.593372)	09/18/23	0-0.5	9.7	Y
HA-SS-02 @ 0.5-1' (40.339221 / -104.593372)	09/18/23	0.5-1	6.0	Y
HA-SS-03 @ 0-0.5' (40.339262 / -104.593368)	09/18/23	0-0.5	3.0	Y
HA-SS-03 @ 0.5-1' (40.339262 / -104.593368)	09/18/23	0.5-1	9.3	Y
HA-SS-04 @ 0-0.5' (40.339177 / -104.593315)	09/18/23	0-0.5	23.9	Y
HA-SS-04 @ 0.5-1' (40.339177 / -104.593315)	09/18/23	0.5-1	3.7	Y
HA-SS-05 @ 0-0.5' (40.339177 / -104.593257)	09/18/23	0-0.5	5.1	Y
HA-SS-05 @ 0.5-1' (40.339177 / -104.593257)	09/18/23	0.5-1	3.3	Y
HA-SS-06 @ 0-0.5' (40.339138 / -104.593374)	09/18/23	0-0.5	1.1	Y
HA-SS-06 @ 0.5-1' (40.339138 / -104.593374)	09/18/23	0.5-1	4.4	Y
HA-SS-07 @ 0-0.5' (40.339094 / -104.593374)	09/18/23	0-0.5	6.7	Y
HA-SS-07 @ 0.5-1' (40.339094 / -104.593374)	09/18/23	0.5-1	1.4	Y
HA-SS-08 @ 0-0.5' (40.339169 / -104.593427)	09/18/23	0-0.5	3.0	Y
HA-SS-08 @ 0.5-1' (40.339169 / -104.593427)	09/18/23	0.5-1	3.2	Y
HA-SS-09 @ 0-0.5' (40.339174 / -104.593479)	09/18/23	0-0.5	3.1	Y
HA-SS-09 @ 0.5-1' (40.339174 / -104.593479)	09/18/23	0.5-1	1.7	Y
(Y/N) = Yes or No ppm-v = parts per million by volume PID = Photoionization Detector				

TABLE 2
SOIL ANALYTICAL RESULTS SUMMARY
DINNER #6-34
CLOSURE ASSESSMENT
40.339093 / -104.593310
SE1/4 SW1/4 SEC.6 T4N R64W 6PM
WELD COUNTY, COLORADO
LOCATION ID 330872
REMEDATION # 16768

Sample Location (Latitude/Longitude)	Date	Approximate Depth (feet)	PID Reading (ppm-v)	Benzene (mg/kg)	Toluene (mg/kg)	Ethylbenzene (mg/kg)	Total Xylenes (mg/kg)	TPH-GRO (mg/kg)	TPH-DRO (mg/kg)	TPH-RRO (mg/kg)	1,2,4-TMB (mg/kg)	1,3,5-TMB (mg/kg)	Boron (mg/L)	Specific Conductance (mmhos/cm)	pH (pH units)	SAR
COGCC Table 915-1 Residential Screening Levels (mg/kg)				1.20	490	5.8	58	500			30	27	2	<4	6-8.3	<6
Initial Assessment																
TB-SS-01 @ 4' (40.339097 / -104.595197)	04/05/21	4	21.5	<0.00200	<0.00200	<0.00200	<0.00200	<0.200	<25.0	<100	<0.00200	<0.00200	0.1	0.327	7.06	0.29
TB-SS-06 @ 0-0.5' (40.339175 / -104.593369)	04/05/21	0-0.5	11.1	<0.00200	<0.00200	<0.00200	0.00560	<0.200	<25.0	<100	<0.00200	<0.00200	0.3	0.282	4.34	0.33
WV-SS-01 @ 3' (40.339139 / -104.594845)	04/05/21	3	53.5	<0.00200	<0.00200	<0.00200	<0.00200	<0.200	<25.0	<100	<0.00200	<0.00200	0.1	0.237	7.15	0.31
WV-FS-01 @ 6' (40.339122 / -104.594845)	04/05/21	6	65.4	<0.00200	<0.00200	<0.00200	<0.00200	<0.200	<25.0	<100	<0.00200	<0.00200	0.4	0.409	6.45	0.69
Background-01 @ 3' (40.339185 / -104.593552)	04/05/21	3	17.8	NA	NA	NA	NA	NA	NA	NA	NA	NA	NA	NA	7.51	NA

TABLE 2
SOIL ANALYTICAL RESULTS SUMMARY
DINNER #6-34
CLOSURE ASSESSMENT
40.339093 / -104.593310
SE1/4 SW1/4 SEC.6 T4N R64W 6PM
WELD COUNTY, COLORADO
LOCATION ID 330872
REMEDATION # 16768

Sample Location (Latitude/Longitude)	Date	Approximate Depth (feet)	PID Reading (ppm-v)	Benzene (mg/kg)	Toluene (mg/kg)	Ethylbenzene (mg/kg)	Total Xylenes (mg/kg)	TPH-GRO (mg/kg)	TPH-DRO (mg/kg)	TPH-RRO (mg/kg)	1,2,4-TMB (mg/kg)	1,3,5-TMB (mg/kg)	Boron (mg/L)	Specific Conductance (mmhos/cm)	pH (pH units)	SAR
COGCC Table 915-1 Residential Screening Levels (mg/kg)				1.20	490	5.8	58	500			30	27	2	<4	6-8.3	<6
pH Delineation Assessment																
Background-02 @ 0-0.5' (40.339269 / -104.593479)	09/18/23	0-0.5	46.1	NA	NA	NA	NA	NA	NA	NA	NA	NA	NA	NA	7.80	NA
Background-02 @ 0.5-1' (40.339269 / -104.593479)	09/18/23	0.5-1	46.2	NA	NA	NA	NA	NA	NA	NA	NA	NA	NA	NA	7.60	NA
Background-02 @ 1-2' (40.339269 / -104.593479)	09/18/23	1-2	35.2	NA	NA	NA	NA	NA	NA	NA	NA	NA	NA	NA	7.67	NA
Background-03 @ 0-0.5' (40.339321 / -104.593356)	09/18/23	0-0.5	29.4	NA	NA	NA	NA	NA	NA	NA	NA	NA	NA	NA	7.78	NA
Background-03 @ 0.5-1' (40.339321 / -104.593356)	09/18/23	0.5-1	38.2	NA	NA	NA	NA	NA	NA	NA	NA	NA	NA	NA	7.74	NA
Background-03 @ 1-2' (40.339321 / -104.593356)	09/18/23	1-2	40.6	NA	NA	NA	NA	NA	NA	NA	NA	NA	NA	NA	7.75	NA
Background-04 @ 0-0.5' (40.339259 / -104.593217)	09/18/23	0-0.5	42.8	NA	NA	NA	NA	NA	NA	NA	NA	NA	NA	NA	7.82	NA
Background-04 @ 0.5-1' (40.339259 / -104.593217)	09/18/23	0.5-1	36.7	NA	NA	NA	NA	NA	NA	NA	NA	NA	NA	NA	7.75	NA
Background-04 @ 1-2' (40.339259 / -104.593217)	09/18/23	1-2	40.4	NA	NA	NA	NA	NA	NA	NA	NA	NA	NA	NA	7.86	NA
Background-05 @ 0-0.5' (40.339163 / -104.593213)	09/18/23	0-0.5	32.4	NA	NA	NA	NA	NA	NA	NA	NA	NA	NA	NA	6.97	NA
Background-05 @ 0.5-1' (40.339163 / -104.593213)	09/18/23	0.5-1	2.8	NA	NA	NA	NA	NA	NA	NA	NA	NA	NA	NA	7.41	NA
Background-05 @ 1-2' (40.339163 / -104.593213)	09/18/23	1-2	3.2	NA	NA	NA	NA	NA	NA	NA	NA	NA	NA	NA	7.64	NA
Background-06 @ 0-0.5' (40.339077 / -104.593275)	09/18/23	0-0.5	30.8	NA	NA	NA	NA	NA	NA	NA	NA	NA	NA	NA	6.59	NA
Background-06 @ 0.5-1' (40.339077 / -104.593275)	09/18/23	0.5-1	1.9	NA	NA	NA	NA	NA	NA	NA	NA	NA	NA	NA	7.24	NA
Background-06 @ 1-2' (40.339077 / -104.593275)	09/18/23	1-2	2.4	NA	NA	NA	NA	NA	NA	NA	NA	NA	NA	NA	7.64	NA

TABLE 2
SOIL ANALYTICAL RESULTS SUMMARY
DINNER #6-34
CLOSURE ASSESSMENT
40.339093 / -104.593310
SE1/4 SW1/4 SEC.6 T4N R64W 6PM
WELD COUNTY, COLORADO
LOCATION ID 330872
REMEDATION # 16768

Sample Location (Latitude/Longitude)	Date	Approximate Depth (feet)	PID Reading (ppm-v)	Benzene (mg/kg)	Toluene (mg/kg)	Ethylbenzene (mg/kg)	Total Xylenes (mg/kg)	TPH-GRO (mg/kg)	TPH-DRO (mg/kg)	TPH-RRO (mg/kg)	1,2,4-TMB (mg/kg)	1,3,5-TMB (mg/kg)	Boron (mg/L)	Specific Conductance (mmhos/cm)	pH (pH units)	SAR
COGCC Table 915-1 Residential Screening Levels (mg/kg)				1.20	490	5.8	58	500			30	27	2	<4	6-8.3	<6
CS-TB-SS-06 @ 0-0.5' (40.339175 / -104.593369)	09/18/23	0-0.5	50.7	NA	NA	NA	NA	NA	NA	NA	NA	NA	NA	NA	7.32	NA
HA-SS-01 @ 0.5-1' (40.339175 / -104.593369)	09/18/23	0.5-1	6.1	NA	NA	NA	NA	NA	NA	NA	NA	NA	NA	NA	7.54	NA
HA-SS-01 @ 1-2' (40.339175 / -104.593369)	09/18/23	1-2	3.5	NA	NA	NA	NA	NA	NA	NA	NA	NA	NA	NA	7.22	NA
HA-SS-02 @ 0-0.5' (40.339221 / -104.593372)	09/18/23	0-0.5	9.7	NA	NA	NA	NA	NA	NA	NA	NA	NA	NA	NA	7.92	NA
HA-SS-02 @ 0.5-1' (40.339221 / -104.593372)	09/18/23	0.5-1	6.0	NA	NA	NA	NA	NA	NA	NA	NA	NA	NA	NA	7.67	NA
HA-SS-03 @ 0-0.5' (40.339262 / -104.593368)	09/18/23	0-0.5	3.0	NA	NA	NA	NA	NA	NA	NA	NA	NA	NA	NA	7.40	NA
HA-SS-03 @ 0.5-1' (40.339262 / -104.593368)	09/18/23	0.5-1	9.3	NA	NA	NA	NA	NA	NA	NA	NA	NA	NA	NA	7.28	NA
HA-SS-04 @ 0-0.5' (40.339177 / -104.593315)	09/18/23	0-0.5	23.9	NA	NA	NA	NA	NA	NA	NA	NA	NA	NA	NA	7.75	NA
HA-SS-04 @ 0.5-1' (40.339177 / -104.593315)	09/18/23	0.5-1	3.7	NA	NA	NA	NA	NA	NA	NA	NA	NA	NA	NA	7.79	NA
HA-SS-05 @ 0-0.5' (40.339177 / -104.593257)	09/18/23	0-0.5	5.1	NA	NA	NA	NA	NA	NA	NA	NA	NA	NA	NA	7.46	NA
HA-SS-05 @ 0.5-1' (40.339177 / -104.593257)	09/18/23	0.5-1	3.3	NA	NA	NA	NA	NA	NA	NA	NA	NA	NA	NA	7.33	NA
HA-SS-06 @ 0-0.5' (40.339138 / -104.593374)	09/18/23	0-0.5	1.1	NA	NA	NA	NA	NA	NA	NA	NA	NA	NA	NA	7.24	NA
HA-SS-06 @ 0.5-1' (40.339138 / -104.593374)	09/18/23	0.5-1	4.4	NA	NA	NA	NA	NA	NA	NA	NA	NA	NA	NA	7.23	NA
HA-SS-07 @ 0-0.5' (40.339094 / -104.593374)	09/18/23	0-0.5	6.7	NA	NA	NA	NA	NA	NA	NA	NA	NA	NA	NA	6.82	NA
HA-SS-07 @ 0.5-1' (40.339094 / -104.593374)	09/18/23	0.5-1	1.4	NA	NA	NA	NA	NA	NA	NA	NA	NA	NA	NA	6.72	NA
HA-SS-08 @ 0-0.5' (40.339169 / -104.593427)	09/18/23	0-0.5	3.0	NA	NA	NA	NA	NA	NA	NA	NA	NA	NA	NA	7.73	NA
HA-SS-08 @ 0.5-1' (40.339169 / -104.593427)	09/18/23	0.5-1	3.2	NA	NA	NA	NA	NA	NA	NA	NA	NA	NA	NA	7.38	NA
HA-SS-09 @ 0-0.5' (40.339174 / -104.593479)	09/18/23	0-0.5	3.1	NA	NA	NA	NA	NA	NA	NA	NA	NA	NA	NA	7.80	NA
HA-SS-09 @ 0.5-1' (40.339174 / -104.593479)	09/18/23	0.5-1	1.7	NA	NA	NA	NA	NA	NA	NA	NA	NA	NA	NA	7.61	NA
COGCC = Colorado Oil and Gas Conservation Commission mg/kg = milligrams per kilogram mmhos/cm = millimhos per centimeter PID = Photoionization Detector ppm-v = parts per million by volume mg/L = milligrams per liter SAR = Sodium Adsorption Ratio Note: Values presented with a less than symbol (<) did not contain concentrations at or above the laboratory MDL and/or reporting limit. Note: Values presented in BOLD contained concentrations exceeding COGCC Table 915-1 Regulatory Limits																
NA - Not Analyzed TPH-GRO = Total Petroleum Hydrocarbons - Gasoline Range Organics TPH-DRO = Total Petroleum Hydrocarbons - Diesel Range Organics TPH-RRO = Total Petroleum Hydrocarbons - Residual Range Organics 1,2,4-TMB = 1,2,4-Trimethylbenzene 1,3,5-TMB = 1,3,5-Trimethylbenzene MDL = Minimum Detection Limits																

TABLE 3
PAH ANALYTICAL RESULTS SUMMARY
DINNER #6-34
CLOSURE ASSESSMENT
40.339093 / -104.593310
SE1/4 SW1/4 SEC.6 T4N R64W 6PM
WELD COUNTY, COLORADO
LOCATION ID 330872
REMEDIAION # 16768

Sample Location (Latitude/Longitude)	Date	Approximate Depth (feet)	PID Reading (ppm- v)	1-Methyl- naphthalene (mg/kg)	2-Methyl- naphthalene (mg/kg)	Acenaphthene (mg/kg)	Anthracene (mg/kg)	Benzo(a)-anthracene (mg/kg)	Benzo(a)- pyrene (mg/kg)	Benzo(b)- fluoranthene (mg/kg)	Benzo(k)- fluoranthene (mg/kg)	Chrysene (mg/kg)	Dibenzo(a,h)- anthracene (mg/kg)	Fluoranthene (mg/kg)	Fluorene (mg/kg)	Ideno(1,2,3- cd)-pyrene (mg/kg)	Naphthalene (mg/kg)	Pyrene (mg/kg)
COGCC Table 915-1 Residential Screening Levels				18	24	360	1,800	1.1	0.11	1.1	11	110	0.11	240	240	1.1	2	180
Initial Assessment																		
TB-SS-01 @ 4' (40.339097 / -104.595197)	04/05/21	4	21.5	<0.00067	<0.00067	<0.00067	<0.00067	<0.00067	0.000217	<0.00067	<0.00067	<0.00067	<0.00067	<0.00067	<0.00067	<0.00067	<0.00067	<0.00067
TB-SS-06 @ 0-0.5' (40.339175 / -104.593369)	04/05/21	0-0.5	11.1	<0.00067	<0.00067	<0.00067	<0.00067	<0.00067	0.000601	0.000745	<0.00067	0.000613	<0.00067	0.00083	<0.00067	0.00047	<0.00067	0.000917
WV-SS-01 @ 3' (40.339139 / -104.594845)	04/05/21	3'	53.5	<0.00067	<0.00067	<0.00067	<0.00067	<0.00067	<0.00067	<0.00067	<0.00067	<0.00067	<0.00067	<0.00067	<0.00067	<0.00067	<0.00067	<0.00067
WV-FS-01 @ 6' (40.339122 / -104.594845)	04/05/21	6'	65.4	0.00286	0.00427	<0.00067	0.000505	<0.00067	0.000318	<0.00067	<0.00067	0.00304	<0.00067	<0.00067	0.000874	<0.00067	<0.00067	0.00144
COGCC = Colorado Oil and Gas Conservation Commission mg/kg = milligrams per kilogram ppm-v = parts per million by volume MDL - Minimum Detection Limit Note: Values presented with a less than symbol (<) did not contain concentrations at or above the laboratory MDL and/or reporting limit. Note: Values presented in BOLD contained concentrations exceeding COGCC Table 915-1 Regulatory Limits																		



ATTACHMENT A

Photo Log

DINNER #6-34

Location ID 330872

Remediation # 16768

Tank Battery Closure Assessment

April 2021 – September 2023



EAGLE
ENVIRONMENTAL
CONSULTING, INC.

8000 W 44th Ave, Wheat Ridge, CO 80033
Ph: 303-433-0479 • F: 303-325-5449



Tank Battery Decommissioning– 04/05/21



Looking south at flowline from wellhead

No petroleum hydrocarbon staining or significant odor observed
Separator removed off site prior to EAGLE's arrival



Looking south at separator dumpline

No petroleum hydrocarbon staining or odor observed

Tank Battery Decommissioning– 04/05/21



Looking east at meter house screening sample

No petroleum hydrocarbon staining or odor observed



Looking east on former facility pad

No petroleum hydrocarbon staining or odor observed

Tank Battery Decommissioning– 04/05/21



Looking west at flowline cut point between water vault and separator

No petroleum hydrocarbon staining or odor observed

Tank Battery Decommissioning– 4/5/21

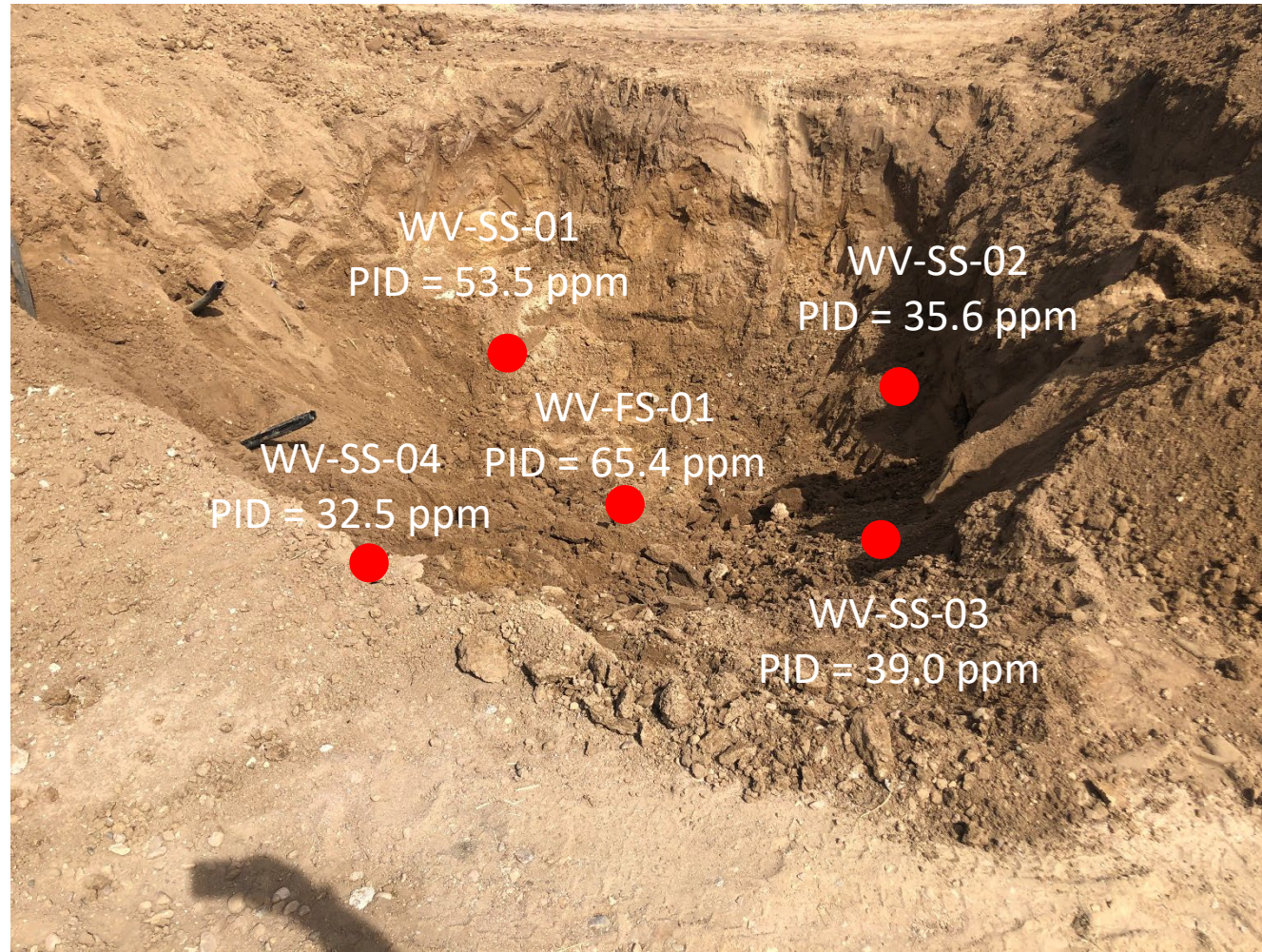


Looking northwest

Sample taken from location of condensate tank dump line location; tank was moved to facilitate sampling.

No petroleum hydrocarbon staining or odor observed

Water Vault Excavation – 4/5/21



Looking northeast

No petroleum hydrocarbon staining or odor observed
EAGLE arrived onsite after water vault was removed.

Hand Auger Assessment – 09/18/23



Looking north at former condensate tank footprint

No petroleum hydrocarbon staining or odor observed



Looking north on former facility pad

No petroleum hydrocarbon staining or odor observed

Hand Auger Assessment – 09/18/23



Looking north on former facility pad

No petroleum hydrocarbon staining or odor observed



Looking east on former facility pad

No petroleum hydrocarbon staining or odor observed

Hand Auger Assessment – 09/18/23



Looking east on former facility pad

No petroleum hydrocarbon staining or odor observed



Looking south on former facility pad

No petroleum hydrocarbon staining or odor observed

Hand Auger Assessment – 09/18/23



Looking south on former facility pad

No petroleum hydrocarbon staining or odor observed



Looking west on former facility pad

No petroleum hydrocarbon staining or odor observed

Hand Auger Assessment – 09/18/23



Looking west on former facility pad

No petroleum hydrocarbon staining or odor observed



ATTACHMENT B

Laboratory Analytical Reports



April 15, 2021

Eagle Environmental Consulting, Inc.

Martin C Eckert III

8000 W 44th Ave

Wheat Ridge CO 80033

Project Name - Noble - Dinner #6-34

Project Number - 425777561

Attached are your analytical results for Noble - Dinner #6-34 received by Origins Laboratory, Inc. April 08, 2021. This project is associated with Origins project number Y104141-01.

The analytical results in the following report were analyzed under the guidelines of EPA Methods. These methods are identified as follows; "SW" are defined in SW-846, "EPA" are defined in 40CFR part 136 and "SM" are defined in the most current revision of Standard Methods For the Examination of Water and Wastewater.

The analytical results apply specifically to the samples and analyses specified per the attached Chain of Custody. As such, this report shall not be reproduced except in full, without the written approval of Origin's laboratory.

Unless otherwise noted, the analytical results for all soil samples are reported on a wet weight basis. All analytical analyses were performed under NELAP guidelines unless noted by a data qualifier.

Any holding time exceedances, deviations from the method specifications or deviations from Origins Laboratory's Standard Operating Procedures are outlined in the case narrative.

Thank you for selecting Origins for your analytical needs. Please contact us with any questions concerning this report, or if we can help with anything at all.

Origins Laboratory, Inc.
303.433.1322
o-squad@oelabinc.com



1725 Elk Place, Denver, CO 80211 | Phone: 303.433.1322 | Fax: 303.265.9645

Eagle Environmental Consulting, Inc.

8000 W 44th Ave

Wheat Ridge CO 80033

Martin C Eckert III

Project Number: 425777561

Project: Noble - Dinner #6-34

CROSS REFERENCE REPORT

Sample ID	Laboratory ID	Matrix	Date Sampled	Date Received
WV-SS-01@3'	Y104141-01	Soil	April 5, 2021 11:45	04/08/2021 15:05
WV-FS-01@6'	Y104141-02	Soil	April 5, 2021 11:50	04/08/2021 15:05

Origins Laboratory, Inc.



The results in this report apply to the samples analyzed in accordance with the chain of custody document. This analytical report must be reproduced in its entirety.

Eagle Environmental Consulting, Inc.
8000 W 44th Ave
Wheat Ridge CO 80033

Martin C Eckert III
Project Number: 425777561
Project: Noble - Dinner #6-34

ORIGINS
LABORATORY, INC

www.originslaboratory.com

page 1 of 1

Client: Eagle Environmental Consulting
Address: 8000 W. 44th Ave
Wheat Ridge, CO 80033
Telephone Number: (303) 433-6179
Email Address: info@origins-lab.com

Project Manager: Martin Eckert III
Project Name: DINNER #6-34
Project Number: —
Samples Collected By: VM/AB

Sample ID Description	Date Sampled	Time Sampled	# of Containers				Preservative			Matrix		Analysis	Sample Instructions
			Unpreserved	HCl	HNO ₃	Other	Groundwater	Soil	At Summa #	Other			
WW-SS-01 P 3'	4/5/21	1145	3	X					X			PAHS PCDD/Fs PCBs Pesticides PFAS THMs VOCs	1 W. SM. pH =
WW-SS-01 P 6'	4/6/21	1150	3	7					X			PAHS PCDD/Fs PCBs Pesticides PFAS THMs VOCs	2 Saturated Dist. P2
													3
													4
													5
													6
													7
													8
													9
													10

Relinquished By:

Relinquished By:

Date: 4/8/21
Time: 1305

Date: 4/8/21
Time: 1505

Received By:

Received By:

Date: 4/8/21
Time: 1505

Date: 4/8/21
Time: 1505

Turnaround Time: Same Day ☐ 24 Hr ☐ 48 Hr ☐ 72 Hr ☐ Standard ☒

Temp Received: 4.2

Date Results Needed: 4/10/21

Eagle Environmental Consulting, Inc.
8000 W 44th Ave
Wheat Ridge CO 80033

Martin C Eckert III
Project Number: 425777561
Project: Noble - Dinner #6-34

Origins Laboratory

Sample Receipt Checklist F-012207-01-R1 Effective Date: 01/09/12

Origins Work Order: Y104141 Client: Eagle

Client Project ID: Noble-Dinner

Checklist Completed by: Jm Shipped Via: HD

Date/time completed: 4-8-21 (UPS, FedEx, Hand Delivered, Pick-up, etc.)

Airbill #: 4278

Matrix(s) Received: (Check all that apply) ☒ Soil/Solid ☐ Water ☐ Other: _____

Cooler Number/Temperature: 142 °C _____ °C (Describe) _____ °C

Thermometer ID: TB03

Requirement Description	Yes	No	N/A	Comments (if any)
If samples require cooling, was the temperature between 0°C to ≤ 6°C ⁽¹⁾ ?	<input checked="" type="checkbox"/>			
Is there ice present (document if blue ice is used)	<input checked="" type="checkbox"/>			
Are custody seals present on cooler? (If so, document in comments if they are signed and dated, broken or intact)		<input checked="" type="checkbox"/>		
Are custody seals present on each sample container? (If so, document in comments if they are signed and dated, broken or intact)		<input checked="" type="checkbox"/>		
Were all samples received intact ⁽¹⁾ ?	<input checked="" type="checkbox"/>			
Was adequate sample volume provided ⁽¹⁾ ?	<input checked="" type="checkbox"/>			
Are short holding time analytes or samples with HTs due within 48 hours present ⁽¹⁾ ?		<input checked="" type="checkbox"/>		
Is a chain-of-custody (COC) present and filled out completely ⁽¹⁾ ?	<input checked="" type="checkbox"/>			
Does the COC agree with the number and type of sample bottles received ⁽¹⁾ ?	<input checked="" type="checkbox"/>			
Do the sample IDs on the bottle labels match the COC ⁽¹⁾ ?	<input checked="" type="checkbox"/>			
Is the COC properly relinquished by the client with date and time recorded ⁽¹⁾ ?	<input checked="" type="checkbox"/>			
For volatiles in water – is there headspace (> ¼ inch bubble) present? If yes, contact client and note in narrative.			<input checked="" type="checkbox"/>	
Are samples preserved that require preservation and was it checked ⁽¹⁾ ? (note ID of confirmation instrument used in comments) / (preservation is not confirmed for subcontracted analyses in order to insure sample integrity) (pH < 2 for samples preserved with HNO ₃ , HCL, H ₂ SO ₄) / (pH > 10 for samples preserved with NaAsO ₂ +NaOH, ZnAc+NaOH)			<input checked="" type="checkbox"/>	
Additional Comments (if any):				

⁽¹⁾ If NO, then contact the client before proceeding with analysis and note date/time and person contacted as well as the corrective action to in the additional comments (above) and the case narrative.

Reviewed by (Project Manager) Jm Date/Time Reviewed 4-9-21

Origins Laboratory, Inc.

Jm

The results in this report apply to the samples analyzed in accordance with the chain of custody document. This analytical report must be reproduced in its entirety.

Eagle Environmental Consulting, Inc.
8000 W 44th Ave
Wheat Ridge CO 80033

Martin C Eckert III
Project Number: 425777561
Project: Noble - Dinner #6-34

WV-SS-01@3'
4/5/2021 11:45:00AM

Analyte	Result	Min Detection Limit	Reporting Limit	Units	Dilution	Batch	Prepared	Analyzed	Notes
---------	--------	---------------------	-----------------	-------	----------	-------	----------	----------	-------

AAL, Inc.
Y104141-01 (Soil)

Boron (Sorbitol)

Boron	0.1		mg/L	1	[none]	04/12/2021	04/14/2021	
-------	-----	--	------	---	--------	------------	------------	--

DRO/ORO by EPA 8015D

Diesel (C10-C28)	ND	25.0	mg/kg	1	B1D0909	04/09/2021	04/09/2021	U
Residual Range Organics (C28-C40)	ND	100	"	"	"	"	"	U

Surrogate: o-Terphenyl	57.5 %	50-150			"	"	"	
------------------------	--------	--------	--	--	---	---	---	--

GBTEX+TMBs

1,2,4-Trimethylbenzene	ND	0.00200	mg/kg	1	B1D0908	04/09/2021	04/09/2021	U
1,3,5-Trimethylbenzene	ND	0.00200	"	"	"	"	"	U
Benzene	ND	0.00200	"	"	"	"	"	U
Ethylbenzene	ND	0.00200	"	"	"	"	"	U
Toluene	ND	0.00200	"	"	"	"	"	U
Gasoline Range Hydrocarbons	ND	0.200	"	"	"	"	"	U
Xylenes, total	ND	0.00200	"	"	"	"	"	U

Surrogate: 1,2-Dichloroethane-d4	103 %	70-130			"	"	"	
----------------------------------	-------	--------	--	--	---	---	---	--

Origins Laboratory, Inc.



The results in this report apply to the samples analyzed in accordance with the chain of custody document. This analytical report must be reproduced in its entirety.

Eagle Environmental Consulting, Inc.
8000 W 44th Ave
Wheat Ridge CO 80033

Martin C Eckert III
Project Number: 425777561
Project: Noble - Dinner #6-34

WV-SS-01@3'

4/5/2021 11:45:00AM

Analyte	Result	Min Detection Limit	Reporting Limit	Units	Dilution	Batch	Prepared	Analyzed	Notes
---------	--------	---------------------	-----------------	-------	----------	-------	----------	----------	-------

Origins Laboratory, Inc.
Y104141-01 (Soil)

GBTEX+TMBs

Surrogate: Toluene-d8	99.9 %	70-130	B1D09 08	04/09/2021	04/09/2021
Surrogate: 4-Bromofluorobenzene	98.1 %	70-130	"	"	"

Metals (Saturated Paste Prep)

Calcium	1.31	me/L	1	[none]	04/12/2021	04/14/2021
Magnesium	0.45	"	"	"	"	"
Sodium	0.29	"	"	"	"	"

PAH by 8270D SIM

1-Methylnaphthalene	ND	0.00048	0.00067	mg/Kg	1	L546692	"	04/12/2021
2-Methylnaphthalene	ND	0.000542	0.00067	"	"	"	"	"
Acenaphthene	ND	0.000431	0.00067	"	"	"	"	"
Anthracene	ND	0.000426	0.00067	"	"	"	"	"
Benzo(a)anthracene	ND	0.000441	0.00067	"	"	"	"	"
Benzo(a)pyrene	ND	0.000133	0.00067	"	"	"	"	"
Benzo(b)fluoranthene	ND	0.000138	0.00067	"	"	"	"	"
Benzo(k)fluoranthene	ND	0.000486	0.00067	"	"	"	"	"
Chrysene	ND	0.000256	0.00067	"	"	"	"	"
Dibenz(a,h)anthracene	ND	0.000279	0.00067	"	"	"	"	"
Fluoranthene	ND	0.000529	0.00067	"	"	"	"	"

Origins Laboratory, Inc.



The results in this report apply to the samples analyzed in accordance with the chain of custody document. This analytical report must be reproduced in its entirety.

Eagle Environmental Consulting, Inc.
8000 W 44th Ave
Wheat Ridge CO 80033

Martin C Eckert III
Project Number: 425777561
Project: Noble - Dinner #6-34

WV-SS-01@3'

4/5/2021 11:45:00AM

Analyte	Result	Min Detection Limit	Reporting Limit	Units	Dilution	Batch	Prepared	Analyzed	Notes
---------	--------	---------------------	-----------------	-------	----------	-------	----------	----------	-------

Waypoint Analytical, Inc.
Y104141-01 (Soil)

PAH by 8270D SIM

Fluorene	ND	0.000501	0.00067	mg/Kg	1	L546692	04/12/2021	04/12/2021
Indeno(1,2,3-cd)pyrene	ND	0.000344	0.00067	"	"	"	"	"
Naphthalene	ND	0.000467	0.00067	"	"	"	"	"
Pyrene	ND	0.000387	0.00067	"	"	"	"	"

Surrogate: 2-Fluorobiphenyl	57.1 %		33-115			"	"	"
Surrogate: 4-Terphenyl-d14	56.7 %		33-122			"	"	"
Surrogate: Nitrobenzene-d5	64.1 %		29-110			"	"	"

pH in Soil by EPA 9045D

pH	7.15			pH Units	1	B1D1214	04/12/2021	04/12/2021
----	------	--	--	----------	---	---------	------------	------------

SAR by 20B Saturated Paste

SAR	0.31				1	[none]	04/12/2021	04/14/2021
-----	------	--	--	--	---	--------	------------	------------

Specific Conductance by Modified 9050A

Specific Conductance (EC)	0.237		0.00500	mmhos/cm	1	B1D1215	04/12/2021	04/12/2021
---------------------------	-------	--	---------	----------	---	---------	------------	------------

Origins Laboratory, Inc.



The results in this report apply to the samples analyzed in accordance with the chain of custody document. This analytical report must be reproduced in its entirety.

Eagle Environmental Consulting, Inc.
8000 W 44th Ave
Wheat Ridge CO 80033

Martin C Eckert III
Project Number: 425777561
Project: Noble - Dinner #6-34

WV-FS-01@6'
4/5/2021 11:50:00AM

Analyte	Result	Min Detection Limit	Reporting Limit	Units	Dilution	Batch	Prepared	Analyzed	Notes
---------	--------	---------------------	-----------------	-------	----------	-------	----------	----------	-------

AAL, Inc.
Y104141-02 (Soil)

Boron (Sorbitol)

Boron	0.4			mg/L	1	[none]	04/12/2021	04/14/2021	
-------	-----	--	--	------	---	--------	------------	------------	--

DRO/ORO by EPA 8015D

Diesel (C10-C28)	ND		25.0	mg/kg	1	B1D0909	04/09/2021	04/09/2021	U
Residual Range Organics (C28-C40)	ND		100	"	"	"	"	"	U

Surrogate: o-Terphenyl	62.8 %		50-150			"	"	"	
------------------------	--------	--	--------	--	--	---	---	---	--

GBTEX+TMBs

1,2,4-Trimethylbenzene	ND		0.00200	mg/kg	1	B1D0908	04/09/2021	04/12/2021	U
1,3,5-Trimethylbenzene	ND		0.00200	"	"	"	"	"	U
Benzene	ND		0.00200	"	"	"	"	"	U
Ethylbenzene	ND		0.00200	"	"	"	"	"	U
Toluene	ND		0.00200	"	"	"	"	"	U
Gasoline Range Hydrocarbons	ND		0.200	"	"	"	"	"	U
Xylenes, total	ND		0.00200	"	"	"	"	"	U

Surrogate: 1,2-Dichloroethane-d4	102 %		70-130			"	"	"	
----------------------------------	-------	--	--------	--	--	---	---	---	--

Origins Laboratory, Inc.



The results in this report apply to the samples analyzed in accordance with the chain of custody document. This analytical report must be reproduced in its entirety.

Eagle Environmental Consulting, Inc.
8000 W 44th Ave
Wheat Ridge CO 80033

Martin C Eckert III
Project Number: 425777561
Project: Noble - Dinner #6-34

WV-FS-01@6'

4/5/2021 11:50:00AM

Analyte	Result	Min Detection Limit	Reporting Limit	Units	Dilution	Batch	Prepared	Analyzed	Notes
---------	--------	---------------------	-----------------	-------	----------	-------	----------	----------	-------

Origins Laboratory, Inc.
Y104141-02 (Soil)

GBTEX+TMBs

Surrogate: Toluene-d8	95.7 %	70-130	B1D09 08	04/09/2021	04/12/2021
Surrogate: 4-Bromofluorobenzene	96.6 %	70-130	"	"	"

Metals (Saturated Paste Prep)

Calcium	1.70	me/L	1	[none]	04/12/2021	04/14/2021
Magnesium	0.84	"	"	"	"	"
Sodium	0.78	"	"	"	"	"

PAH by 8270D SIM

1-Methylnaphthalene	0.00286	0.00048	0.00067	mg/Kg	1	L546692	"	04/12/2021	
2-Methylnaphthalene	0.00427	0.000542	0.00067	"	"	"	"	"	
Acenaphthene	ND	0.000431	0.00067	"	"	"	"	"	
Anthracene	0.000505	0.000426	0.00067	"	"	"	"	"	J
Benzo(a)anthracene	ND	0.000441	0.00067	"	"	"	"	"	
Benzo(a)pyrene	0.000318	0.000133	0.00067	"	"	"	"	"	J
Benzo(b)fluoranthene	ND	0.000138	0.00067	"	"	"	"	"	
Benzo(k)fluoranthene	ND	0.000486	0.00067	"	"	"	"	"	
Chrysene	0.00304	0.000256	0.00067	"	"	"	"	"	
Dibenz(a,h)anthracene	ND	0.000279	0.00067	"	"	"	"	"	
Fluoranthene	ND	0.000529	0.00067	"	"	"	"	"	
Fluorene	0.000874	0.000501	0.00067	"	"	"	"	"	

Origins Laboratory, Inc.

The results in this report apply to the samples analyzed in accordance with the chain of custody document. This analytical report must be reproduced in its entirety.

Eagle Environmental Consulting, Inc.
8000 W 44th Ave
Wheat Ridge CO 80033

Martin C Eckert III
Project Number: 425777561
Project: Noble - Dinner #6-34

WV-FS-01@6'

4/5/2021 11:50:00AM

Analyte	Result	Min Detection Limit	Reporting Limit	Units	Dilution	Batch	Prepared	Analyzed	Notes
---------	--------	---------------------	-----------------	-------	----------	-------	----------	----------	-------

Waypoint Analytical, Inc.
Y104141-02 (Soil)

PAH by 8270D SIM

Indeno(1,2,3-cd)pyrene	ND	0.000344	0.00067	mg/Kg	1	L546692	04/12/2021	04/12/2021
Naphthalene	ND	0.000467	0.00067	"	"	"	"	"
Pyrene	0.00144	0.000387	0.00067	"	"	"	"	"

Surrogate: 2-Fluorobiphenyl	54.3 %	33-115	"	"	"
Surrogate: 4-Terphenyl-d14	76.5 %	33-122	"	"	"
Surrogate: Nitrobenzene-d5	66.2 %	29-110	"	"	"

pH in Soil by EPA 9045D

pH	6.45	pH Units	1	B1D1214	04/12/2021	04/12/2021
----	------	----------	---	---------	------------	------------

SAR by 20B Saturated Paste

SAR	0.69	1	[none]	04/12/2021	04/14/2021
-----	------	---	--------	------------	------------

Specific Conductance by Modified 9050A

Specific Conductance (EC)	0.409	0.00500	mmhos/cm	1	B1D1215	04/12/2021	04/12/2021
---------------------------	-------	---------	----------	---	---------	------------	------------

Origins Laboratory, Inc.



The results in this report apply to the samples analyzed in accordance with the chain of custody document. This analytical report must be reproduced in its entirety.

Eagle Environmental Consulting, Inc.
8000 W 44th Ave
Wheat Ridge CO 80033

Martin C Eckert III
Project Number: 425777561
Project: Noble - Dinner #6-34

Volatile Organic Compounds by GC/MS SW846 8260D - Quality Control
Origins Laboratory, Inc.

Analyte	Result	Reporting Limit	Units	Spike Level	Source Result	%REC	%REC Limits	RPD	RPD Limit	Notes
Batch B1D0908 - EPA 5030 (soil)										
Blank (B1D0908-BLK1)					Prepared: 04/09/2021 Analyzed: 04/09/2021					
1,2,4-Trimethylbenzene	ND	0.00200	mg/kg							U
Naphthalene	ND	0.0100	"							U
1,3,5-Trimethylbenzene	ND	0.00200	"							U
Benzene	ND	0.00200	"							U
Ethylbenzene	ND	0.00200	"							U
Toluene	ND	0.00200	"							U
Gasoline Range Hydrocarbons	ND	0.200	"							U
Xylenes, total	ND	0.00200	"							U
Surrogate: 1,2-Dichloroethane-d4	0.12		"	0.125		99.4	70-130			
Surrogate: Toluene-d8	0.13		"	0.125		100	70-130			
Surrogate: 4-Bromofluorobenzene	0.12		"	0.125		97.7	70-130			

Origins Laboratory, Inc.



The results in this report apply to the samples analyzed in accordance with the chain of custody document. This analytical report must be reproduced in its entirety.

Eagle Environmental Consulting, Inc.
8000 W 44th Ave
Wheat Ridge CO 80033

Martin C Eckert III
Project Number: 425777561
Project: Noble - Dinner #6-34

Volatile Organic Compounds by GC/MS SW846 8260D - Quality Control
Origins Laboratory, Inc.

Analyte	Result	Reporting Limit	Units	Spike Level	Source Result	%REC	%REC Limits	RPD	RPD Limit	Notes
---------	--------	-----------------	-------	-------------	---------------	------	-------------	-----	-----------	-------

Batch B1D0908 - EPA 5030 (soil)

LCS (B1D0908-BS1)

Prepared: 04/09/2021 Analyzed: 04/09/2021

1,2,4-Trimethylbenzene	0.0572	0.00200	mg/kg	0.0500		114	70-130			
Naphthalene	0.0559	0.0100	"	0.0500		112	70-130			
1,3,5-Trimethylbenzene	0.0570	0.00200	"	0.0500		114	70-130			
Benzene	0.0539	0.00200	"	0.0500		108	70-130			
Ethylbenzene	0.0554	0.00200	"	0.0500		111	70-130			
m,p-Xylene	0.110	0.00400	"	0.100		110	70-130			
o-Xylene	0.0567	0.00200	"	0.0500		113	70-130			
Toluene	0.0531	0.00200	"	0.0500		106	70-130			
Surrogate: 1,2-Dichloroethane-d4	0.12		"	0.125		97.4	70-130			
Surrogate: Toluene-d8	0.12		"	0.125		98.4	70-130			
Surrogate: 4-Bromofluorobenzene	0.13		"	0.125		100	70-130			

Origins Laboratory, Inc.



The results in this report apply to the samples analyzed in accordance with the chain of custody document. This analytical report must be reproduced in its entirety.

Eagle Environmental Consulting, Inc.
8000 W 44th Ave
Wheat Ridge CO 80033

Martin C Eckert III
Project Number: 425777561
Project: Noble - Dinner #6-34

Volatile Organic Compounds by GC/MS SW846 8260D - Quality Control
Origins Laboratory, Inc.

Analyte	Result	Reporting Limit	Units	Spike Level	Source Result	%REC	%REC Limits	RPD	RPD Limit	Notes
Batch B1D0908 - EPA 5030 (soil)										
Matrix Spike Dup (B1D0908-MSD1)		Source: Y104141-01			Prepared: 04/09/2021 Analyzed: 04/09/2021					
1,2,4-Trimethylbenzene	0.0545	0.00200	mg/kg	0.0500	ND	109	70-130	5.94	20	
Naphthalene	0.0578	0.0100	"	0.0500	ND	116	70-130	4.86	20	
1,3,5-Trimethylbenzene	0.0537	0.00200	"	0.0500	ND	107	70-130	4.97	20	
Benzene	0.0515	0.00200	"	0.0500	ND	103	70-130	3.59	20	
Ethylbenzene	0.0569	0.00200	"	0.0500	ND	114	70-130	3.32	20	
m,p-Xylene	0.115	0.00400	"	0.100	ND	115	70-130	3.99	20	
o-Xylene	0.0582	0.00200	"	0.0500	ND	116	70-130	6.56	20	
Toluene	0.0509	0.00200	"	0.0500	ND	102	70-130	3.66	20	
Surrogate: 1,2-Dichloroethane-d4	0.12		"	0.125		98.4	70-130			
Surrogate: Toluene-d8	0.12		"	0.125		98.7	70-130			
Surrogate: 4-Bromofluorobenzene	0.13		"	0.125		104	70-130			

Origins Laboratory, Inc.



The results in this report apply to the samples analyzed in accordance with the chain of custody document. This analytical report must be reproduced in its entirety.

Eagle Environmental Consulting, Inc.
8000 W 44th Ave
Wheat Ridge CO 80033

Martin C Eckert III
Project Number: 425777561
Project: Noble - Dinner #6-34

Volatile Organic Compounds by GC/MS SW846 8260D - Quality Control
Origins Laboratory, Inc.

Analyte	Result	Reporting Limit	Units	Spike Level	Source Result	%REC	%REC Limits	RPD	RPD Limit	Notes
Batch B1D0909 - EPA 3550B										
Blank (B1D0909-BLK1)					Prepared: 04/09/2021 Analyzed: 04/09/2021					
Diesel (C10-C28)	ND	25.0	mg/kg							U
Residual Range Organics (C28-C40)	ND	100	"							U
Surrogate: o-Terphenyl	18		"	25.0		73.8	50-150			

Origins Laboratory, Inc.



The results in this report apply to the samples analyzed in accordance with the chain of custody document. This analytical report must be reproduced in its entirety.

Eagle Environmental Consulting, Inc.
8000 W 44th Ave
Wheat Ridge CO 80033

Martin C Eckert III
Project Number: 425777561
Project: Noble - Dinner #6-34

Extractable Petroleum Hydrocarbons by 8015D - Quality Control
Origins Laboratory, Inc.

Analyte	Result	Reporting Limit	Units	Spike Level	Source Result	%REC	%REC Limits	RPD	RPD Limit	Notes
---------	--------	-----------------	-------	-------------	---------------	------	-------------	-----	-----------	-------

Batch B1D0909 - EPA 3550B

LCS (B1D0909-BS1)

Prepared: 04/09/2021 Analyzed: 04/09/2021

Diesel (C10-C28)	928	50.0	mg/kg	1000		92.8	70-130			
Residual Range Organics (C28-C40)	885	200	"	1000		88.5	70-130			
Surrogate: o-Terphenyl	39		"	50.0		78.1	50-150			

Origins Laboratory, Inc.



The results in this report apply to the samples analyzed in accordance with the chain of custody document. This analytical report must be reproduced in its entirety.

Eagle Environmental Consulting, Inc.
8000 W 44th Ave
Wheat Ridge CO 80033

Martin C Eckert III
Project Number: 425777561
Project: Noble - Dinner #6-34

Extractable Petroleum Hydrocarbons by 8015D - Quality Control
Origins Laboratory, Inc.

Analyte	Result	Reporting Limit	Units	Spike Level	Source Result	%REC	%REC Limits	RPD	RPD Limit	Notes
---------	--------	-----------------	-------	-------------	---------------	------	-------------	-----	-----------	-------

Batch B1D0909 - EPA 3550B

Matrix Spike (B1D0909-MS1)		Source: Y104141-01			Prepared: 04/09/2021 Analyzed: 04/09/2021					
Diesel (C10-C28)	930	50.0	mg/kg	1000	ND	93.0	70-130			
Residual Range Organics (C28-C40)	879	200	"	1000	ND	87.9	70-130			
Surrogate: o-Terphenyl	37		"	50.0		74.7	50-150			

Origins Laboratory, Inc.



The results in this report apply to the samples analyzed in accordance with the chain of custody document. This analytical report must be reproduced in its entirety.

Eagle Environmental Consulting, Inc.
8000 W 44th Ave
Wheat Ridge CO 80033

Martin C Eckert III
Project Number: 425777561
Project: Noble - Dinner #6-34

Extractable Petroleum Hydrocarbons by 8015D - Quality Control
Origins Laboratory, Inc.

Analyte	Result	Reporting Limit	Units	Spike Level	Source Result	%REC	%REC Limits	RPD	RPD Limit	Notes
---------	--------	-----------------	-------	-------------	---------------	------	-------------	-----	-----------	-------

Batch B1D0909 - EPA 3550B

Matrix Spike Dup (B1D0909-MSD1)		Source: Y104141-01			Prepared: 04/09/2021 Analyzed: 04/09/2021					
Diesel (C10-C28)	867	50.0	mg/kg	1000	ND	86.7	70-130	6.96	35	
Residual Range Organics (C28-C40)	812	200	"	1000	ND	81.2	70-130	7.83	35	
Surrogate: o-Terphenyl	34		"	50.0		68.4	50-150			

Origins Laboratory, Inc.



The results in this report apply to the samples analyzed in accordance with the chain of custody document. This analytical report must be reproduced in its entirety.

Eagle Environmental Consulting, Inc.
8000 W 44th Ave
Wheat Ridge CO 80033

Martin C Eckert III
Project Number: 425777561
Project: Noble - Dinner #6-34

Extractable Petroleum Hydrocarbons by 8015D - Quality Control

Origins Laboratory, Inc.

Analyte	Result	Reporting Limit	Units	Spike Level	Source Result	%REC	%REC Limits	RPD	RPD Limit	Notes
---------	--------	-----------------	-------	-------------	---------------	------	-------------	-----	-----------	-------

Saturated Paste - Quality Control

Origins Laboratory, Inc.

Analyte	Result	Reporting Limit	Units	Spike Level	Source Result	%REC	%REC Limits	RPD	RPD Limit	Notes
---------	--------	-----------------	-------	-------------	---------------	------	-------------	-----	-----------	-------

Batch B1D1214 - NO PREP

Duplicate (B1D1214-DUP1)

Source: Y104141-01

Prepared: 04/12/2021 Analyzed: 04/12/2021

pH	7.23		pH Units	7.15		1.11	25
----	------	--	----------	------	--	------	----

Batch B1D1215 - NO PREP

Blank (B1D1215-BLK1)

Prepared: 04/12/2021 Analyzed: 04/12/2021

Specific Conductance (EC)	0.00210	0.00500	mmhos/cm
---------------------------	---------	---------	----------

Duplicate (B1D1215-DUP1)

Source: Y104141-01

Prepared: 04/12/2021 Analyzed: 04/12/2021

Specific Conductance (EC)	0.243	0.00500	mmhos/cm	0.237		2.42	25
---------------------------	-------	---------	----------	-------	--	------	----

Origins Laboratory, Inc.



The results in this report apply to the samples analyzed in accordance with the chain of custody document. This analytical report must be reproduced in its entirety.

Eagle Environmental Consulting, Inc.
8000 W 44th Ave
Wheat Ridge CO 80033

Martin C Eckert III
Project Number: 425777561
Project: Noble - Dinner #6-34

PAH by 8270D SIM - Quality Control
Waypoint Analytical, Inc.

Analyte	Result	Reporting Limit	Units	Spike Level	Source Result	%REC	%REC Limits	RPD	RPD Limit	Notes
---------	--------	-----------------	-------	-------------	---------------	------	-------------	-----	-----------	-------

Batch L546692 - 3550B

MSD (L 90165-MSD-L546692)		Source: 90165			Prepared: 04/12/2021 Analyzed: 04/12/2021					
Chrysene	0.147	0.000256	mg/Kg	0.162	0.0307	71.7	30-130	10.7	30	
1-Methylnaphthalene	0.109	0.00048	"	0.162	0.000714	66.8	30-130	2.7	30	
2-Methylnaphthalene	0.104	0.000542	"	0.162	0.00208	62.9	30-130	2.9	30	
Acenaphthene	0.107	0.000431	"	0.162	0.00765	61.3	30-130	2.8	30	
Anthracene	0.135	0.000426	"	0.162	0.0202	70.8	30-130	7.6	30	
Benzo(a)anthracene	0.186	0.000441	"	0.162	0.0555	80.5	30-130	11.9	30	
Pyrene	0.299	0.000387	"	0.162	0.194	64.8	30-130	30.4	30	
Naphthalene	0.0982	0.000467	"	0.162	90165	60.6	30-130	2.1	30	
Indeno(1,2,3-cd)pyrene	0.1	0.000344	"	0.162	0.00952	55.8	30-130	10.3	30	
Fluorene	0.122	0.000501	"	0.162	0.013	67.2	30-130	5	30	
Fluoranthene	0.221	0.000529	"	0.162	0.129	56.7	30-130	24.9	30	
Dibenz(a,h)anthracene	0.0941	0.000279	"	0.162	0.00288	56.3	30-130	7.2	30	
Benzo(b)fluoranthene	0.127	0.000138	"	0.162	0.0375	55.2	30-130	9.9	30	
Benzo(k)fluoranthene	0.112	0.000486	"	0.162	0.0149	59.9	30-130	15.2	30	
Benzo(a)pyrene	0.169	0.000133	"	0.162	0.0323	84.3	30-130	8.6	30	
Surrogate: 2-Fluorobiphenyl	48.3		"	0.325	155	48.3	33-115			
Surrogate: 4-Terphenyl-d14	61.2		"	0.325	198	61.2	33-122			
Surrogate: Nitrobenzene-d5	61.2		"	0.325	182	61.2	29-110			

MS (L 90165-MS-L546692)		Source: 90165			Prepared: 04/12/2021 Analyzed: 04/12/2021					
Benzo(a)pyrene	0.155	0.000133	mg/Kg	0.163	0.0323	75.2	30-130			
Chrysene	0.132	0.000256	"	0.163	0.0307	62.1	30-130			
Pyrene	0.22	0.000387	"	0.163	0.194	15.9	30-130			*
Naphthalene	0.0961	0.000467	"	0.163	90165	58.9	30-130			
Indeno(1,2,3-cd)pyrene	0.0902	0.000344	"	0.163	0.00952	49.4	30-130			
Fluorene	0.116	0.000501	"	0.163	0.013	63.1	30-130			
Fluoranthene	0.172	0.000529	"	0.163	0.129	26.3	30-130			*

Origins Laboratory, Inc.

The results in this report apply to the samples analyzed in accordance with the chain of custody document. This analytical report must be reproduced in its entirety.

Eagle Environmental Consulting, Inc.
8000 W 44th Ave
Wheat Ridge CO 80033

Martin C Eckert III
Project Number: 425777561
Project: Noble - Dinner #6-34

PAH by 8270D SIM - Quality Control
Waypoint Analytical, Inc.

Analyte	Result	Reporting Limit	Units	Spike Level	Source Result	%REC	%REC Limits	RPD	RPD Limit	Notes
---------	--------	-----------------	-------	-------------	---------------	------	-------------	-----	-----------	-------

Batch L546692 - 3550B

MS (L 90165-MS-L546692)		Source: 90165			Prepared: 04/12/2021 Analyzed: 04/12/2021					
Dibenz(a,h)anthracene	0.0875	0.000279	mg/Kg	0.163	0.00288	51.9	30-130			
Benzo(b)fluoranthene	0.115	0.000138	"	0.163	0.0375	47.5	30-130			
Benzo(a)anthracene	0.165	0.000441	"	0.163	0.0555	67.1	30-130			
Anthracene	0.125	0.000426	"	0.163	0.0202	64.2	30-130			
Acenaphthene	0.104	0.000431	"	0.163	0.00765	59.1	30-130			
2-Methylnaphthalene	0.101	0.000542	"	0.163	0.00208	60.6	30-130			
Benzo(k)fluoranthene	0.0961	0.000486	"	0.163	0.0149	49.8	30-130			
1-Methylnaphthalene	0.106	0.00048	"	0.163	0.000714	64.5	30-130			
Surrogate: Nitrobenzene-d5	57.4		"	0.327	182	57.4	29-110			
Surrogate: 2-Fluorobiphenyl	46.4		"	0.327	155	46.4	33-115			
Surrogate: 4-Terphenyl-d14	58.4		"	0.327	198	58.4	33-122			

LCS (LCS-L546692)

Prepared: 04/12/2021 Analyzed: 04/12/2021

Dibenz(a,h)anthracene	0.0886	0.000279	mg/Kg	0.167		53	30-130
Fluoranthene	0.11	0.000529	"	0.167		65.8	30-130
Pyrene	0.105	0.000387	"	0.167		62.8	30-130
Fluorene	0.115	0.000501	"	0.167		68.8	30-130
Indeno(1,2,3-cd)pyrene	0.0862	0.000344	"	0.167		51.6	30-130
Chrysene	0.113	0.000256	"	0.167		67.6	30-130
Naphthalene	0.102	0.000467	"	0.167		61	30-130
Benzo(b)fluoranthene	0.0976	0.000138	"	0.167		58.4	30-130
Benzo(a)pyrene	0.133	0.000133	"	0.167		79.6	30-130
Benzo(a)anthracene	0.126	0.000441	"	0.167		75.4	30-130
Acenaphthene	0.105	0.000431	"	0.167		62.8	30-130
2-Methylnaphthalene	0.108	0.000542	"	0.167		64.6	30-130
1-Methylnaphthalene	0.107	0.00048	"	0.167		64	30-130
Anthracene	0.114	0.000426	"	0.167		68.2	30-130

Origins Laboratory, Inc.

The results in this report apply to the samples analyzed in accordance with the chain of custody document. This analytical report must be reproduced in its entirety.

Eagle Environmental Consulting, Inc.
8000 W 44th Ave
Wheat Ridge CO 80033

Martin C Eckert III
Project Number: 425777561
Project: Noble - Dinner #6-34

PAH by 8270D SIM - Quality Control
Waypoint Analytical, Inc.

Analyte	Result	Reporting Limit	Units	Spike Level	Source Result	%REC	%REC Limits	RPD	RPD Limit	Notes
---------	--------	-----------------	-------	-------------	---------------	------	-------------	-----	-----------	-------

Batch L546692 - 3550B

LCS (LCS-L546692)

Prepared: 04/12/2021 Analyzed: 04/12/2021

Benzo(k)fluoranthene	0.09	0.000486	mg/Kg	0.167		53.8	30-130			
Surrogate: Nitrobenzene-d5	60		"	0.333		60	29-110			
Surrogate: 4-Terphenyl-d14	57.6		"	0.333		57.6	33-122			
Surrogate: 2-Fluorobiphenyl	55.2		"	0.333		55.2	33-115			

LRB (LRB-L546692)

Prepared: 04/12/2021 Analyzed: 04/12/2021

Chrysene	ND	0.00067	mg/Kg				-			
Dibenz(a,h)anthracene	ND	0.00067	"				-			
Fluoranthene	ND	0.00067	"				-			
Fluorene	ND	0.00067	"				-			
Benzo(k)fluoranthene	ND	0.00067	"				-			
Naphthalene	ND	0.00067	"				-			
Indeno(1,2,3-cd)pyrene	ND	0.00067	"				-			
Benzo(b)fluoranthene	ND	0.00067	"				-			
Benzo(a)pyrene	ND	0.00067	"				-			
Benzo(a)anthracene	ND	0.00067	"				-			
Acenaphthene	ND	0.00067	"				-			
2-Methylnaphthalene	ND	0.00067	"				-			
1-Methylnaphthalene	ND	0.00067	"				-			
Pyrene	ND	0.00067	"				-			
Anthracene	ND	0.00067	"				-			
Surrogate: Nitrobenzene-d5	63.3		"	0.333		63.3	29-110			
Surrogate: 4-Terphenyl-d14	62.1		"	0.333		62.1	33-122			
Surrogate: 2-Fluorobiphenyl	57		"	0.333		57	33-115			

Origins Laboratory, Inc.

The results in this report apply to the samples analyzed in accordance with the chain of custody document. This analytical report must be reproduced in its entirety.

Eagle Environmental Consulting, Inc.

8000 W 44th Ave

Wheat Ridge CO 80033

Martin C Eckert III

Project Number: 425777561

Project: Noble - Dinner #6-34

Notes and Definitions

U Sample is Non-Detect.

J Estimated Value. Analyte below reported quantitation limit.

* QC Failure

ND Analyte NOT DETECTED at or above the reporting limit

RPD Relative Percent Difference

All soil results are reported on a wet weight basis.

Origins Laboratory, Inc.



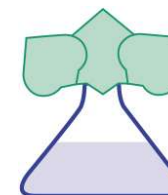
The results in this report apply to the samples analyzed in accordance with the chain of custody document. This analytical report must be reproduced in its entirety.

American Agricultural Laboratory, Inc.

700 West D Street / PO Box 370 / McCook, Nebraska 69001

Office: 308-345-3670 / FAX: 308-345-7880

www.AmAgLab.com



95029

ORIGINS LABORATORY INC

1725 ELK PLACE

DENVER CO 80211

NAME : ORIGINS

DATE RECEIVED: 04/12/2021

DATE REPORTED: 04/14/2021

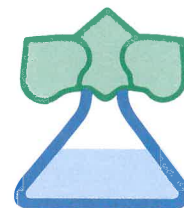
SOIL TEST RESULTS																		
LAB NUMBER	FIELD IDENTIFICATION		SAMPLE IDENTIFICATION		Depth Inches	pH		EL	SOLUBLE SALTS mod. SP mmhos/cm	OM LOI %	NITRATE-N (FIA)		PHOSPHORUS					
						1 : 1 Soil	Buffer Woodruff				P1 ppm	Bicarb ppm	P2 ppm	M2 ppm	M3 ppm			
3331149	Y104141		01		0-8													
3331150	Y104141		02		0-8													
LAB NUMBER	SULFATE-S Ca-P ppm		NH4OAc (Exchangeable)				DTPA				BORON Sorbitol ppm	EST. CATION EXCHANGE CAPACITY (CEC) me/100g	% SATURATION					
			K ppm	Ca ppm	Mg ppm	Na ppm	Zn ppm	Fe ppm	Mn ppm	Cu ppm			BASE	H	Ca	Mg	K	Na
3331149											0.1							
3331150											0.4							
LAB NUMBER	SOLUBLE (SAT. EXT.)			SODIUM ADSORPTION RATIO (SAR)	EXCH. SODIUM PERCENT (ESP)	GYPSUM REQ T/A	PARTICLE SIZE ANALYSIS				CHLORIDE		EXCH. NH4-N		ALUMINUM ppm	TOTAL N %		
	Ca me/L	Mg me/L	Na me/L				SAND %	SILT %	CLAY %	SOIL TEXTURE	ppm	lbs/A	ppm	lbs/A				
3331149	1.31	0.45	0.29	0.31	1	0												
3331150	1.70	0.84	0.78	0.69	1	0												
SUGGESTED FERTILIZER RECOMMENDATIONS																LIME REC 60% ECCE T/A		
LAB NUMBER	FIELD IDENTIFICATION	SAMPLE IDENTIFICATION	CROP TO BE GROWN	YIELD GOAL	N	P2O5	K2O	S	Zn	MgO	Fe	Mn	Cu	B	Cl			
										lbs/A								
3331149	Y104141	01																
3331150	Y104141	02																
Approved By: Bob Olsen					Analysis By: American Agricultural Lab					Recommendations By: American Agricultural Lab								

American Agricultural Laboratory, Inc.

700 West D St. / P.O. Box 370 / McCook, Nebraska 69001

Office: 308-345-3670 / FAX: 308-345-7880 / www.AmAgLab.com

"Analysis You Can Grow With"®



ORIGINS LABORATORY INC
1725 ELK PLACE
DENVER, CO 80211

DATE RECEIVED: 4/12/2021
DATE REPORTED: 4/14/2021
ACCOUNT NO: 95029
GROWER: ORIGINS

SOIL BORON REPORT

Lab #	Field ID	Sample ID	B, mg/L
331149	Y104141	1	0.1
331150	Y104141	2	0.4

Bab Olson

Method Used:

Provin, T., and H. Zhang. 2014. DTPA and DTPA-Sorbitol Extraction of Micronutrients.
Soil Test Methods From the Southeastern United States 2014



April 16, 2021

Eagle Environmental Consulting, Inc.

Martin C Eckert III

8000 W 44th Ave

Wheat Ridge CO 80033

Project Name - Noble - Dinner #6-34

Project Number - 425777561

Attached are your analytical results for Noble - Dinner #6-34 received by Origins Laboratory, Inc. April 08, 2021. This project is associated with Origins project number Y104150-01.

The analytical results in the following report were analyzed under the guidelines of EPA Methods. These methods are identified as follows; "SW" are defined in SW-846, "EPA" are defined in 40CFR part 136 and "SM" are defined in the most current revision of Standard Methods For the Examination of Water and Wastewater.

The analytical results apply specifically to the samples and analyses specified per the attached Chain of Custody. As such, this report shall not be reproduced except in full, without the written approval of Origin's laboratory.

Unless otherwise noted, the analytical results for all soil samples are reported on a wet weight basis. All analytical analyses were performed under NELAP guidelines unless noted by a data qualifier.

Any holding time exceedances, deviations from the method specifications or deviations from Origins Laboratory's Standard Operating Procedures are outlined in the case narrative.

Thank you for selecting Origins for your analytical needs. Please contact us with any questions concerning this report, or if we can help with anything at all.

Origins Laboratory, Inc.
303.433.1322
o-squad@oelabinc.com



1725 Elk Place, Denver, CO 80211 | Phone: 303.433.1322 | Fax: 303.265.9645

Eagle Environmental Consulting, Inc.

8000 W 44th Ave

Wheat Ridge CO 80033

Martin C Eckert III

Project Number: 425777561

Project: Noble - Dinner #6-34

CROSS REFERENCE REPORT

Sample ID	Laboratory ID	Matrix	Date Sampled	Date Received
TB-SS-01@4'	Y104150-01	Soil	April 5, 2021 11:55	04/08/2021 15:05
TB-SS-06@0-0.5'	Y104150-02	Soil	April 5, 2021 12:22	04/08/2021 15:05

Origins Laboratory, Inc.



The results in this report apply to the samples analyzed in accordance with the chain of custody document. This analytical report must be reproduced in its entirety.

Eagle Environmental Consulting, Inc.
8000 W 44th Ave
Wheat Ridge CO 80033

Martin C Eckert III
Project Number: 425777561
Project: Noble - Dinner #6-34

Origins Laboratory F-012207-01-R1
Effective Date: 01/09/12

Sample Receipt Checklist

Origins Work Order: Y104150 Client: Eagle
Client Project ID: dinner

Checklist Completed by: SGKDK Shipped Via: HD
Date/time completed: 04/08/21 (UPS, FedEx, Hand Delivered, Pick-up, etc.)
Airbill #: N/A

Matrix(s) Received: (Check all that apply): ☒ Soil/Solid ☐ Water ☐ Other: _____
Cooler Number/Temperature: 1 / 4.2 °C _____ / _____ °C (Describe) _____ °C
Thermometer ID: T003

Requirement Description	Yes	No	N/A	Comments (if any)
If samples require cooling, was the temperature between 0°C to ≤ 6°C ⁽¹⁾ ?	<input checked="" type="checkbox"/>			
Is there ice present (document if blue ice is used)	<input checked="" type="checkbox"/>			
Are custody seals present on cooler? (if so, document in comments if they are signed and dated, broken or intact)			<input checked="" type="checkbox"/>	
Are custody seals present on each sample container? (if so, document in comments if they are signed and dated, broken or intact)			<input checked="" type="checkbox"/>	
Were all samples received intact ⁽¹⁾ ?	<input checked="" type="checkbox"/>			
Was adequate sample volume provided ⁽¹⁾ ?	<input checked="" type="checkbox"/>			
Are short holding time analytes or samples with HTs due within 48 hours present ⁽¹⁾ ?			<input checked="" type="checkbox"/>	
Is a chain-of-custody (COC) present and filled out completely ⁽¹⁾ ?	<input checked="" type="checkbox"/>			
Does the COC agree with the number and type of sample bottles received ⁽¹⁾ ?	<input checked="" type="checkbox"/>			
Do the sample IDs on the bottle labels match the COC ⁽¹⁾ ?	<input checked="" type="checkbox"/>			
Is the COC properly relinquished by the client with date and time recorded ⁽¹⁾ ?	<input checked="" type="checkbox"/>			
For volatiles in water – is there headspace (> ¼ inch bubble) present? If yes, contact client and note in narrative.			<input checked="" type="checkbox"/>	
Are samples preserved that require preservation and was it checked ⁽¹⁾ ? (note ID of confirmation instrument used in comments) / (preservation is not confirmed for subcontracted analyses in order to insure sample integrity)/(pH < 2 for samples preserved with HNO ₃ , HCL, H ₂ SO ₄) / (pH > 10 for samples preserved with NaAsO ₂ +NaOH, ZnAc+NaOH)			<input checked="" type="checkbox"/>	
Additional Comments (if any):				

⁽¹⁾If NO, then contact the client before proceeding with analysis and note date/time and person contacted as well as the corrective action to in the additional comments (above) and the case narrative.

Reviewed by: jm (Project Manager)

4-9-21
Date/Time Reviewed

Origins Laboratory, Inc.

Jordan A. Merrill

The results in this report apply to the samples analyzed in accordance with the chain of custody document. This analytical report must be reproduced in its entirety.

Eagle Environmental Consulting, Inc.
8000 W 44th Ave
Wheat Ridge CO 80033

Martin C Eckert III
Project Number: 425777561
Project: Noble - Dinner #6-34

TB-SS-01@4'
4/5/2021 11:55:00AM

Analyte	Result	Min Detection Limit	Reporting Limit	Units	Dilution	Batch	Prepared	Analyzed	Notes
---------	--------	---------------------	-----------------	-------	----------	-------	----------	----------	-------

AAL, Inc.
Y104150-01 (Soil)

Boron (Sorbitol)

Boron	0.1		mg/L	1	[none]	04/12/2021	04/14/2021	
-------	-----	--	------	---	--------	------------	------------	--

DRO/ORO by EPA 8015D

Diesel (C10-C28)	ND	25.0	mg/kg	1	B1D0909	04/09/2021	04/09/2021	U
Residual Range Organics (C28-C40)	ND	100	"	"	"	"	"	U

Surrogate: o-Terphenyl	63.9 %	50-150			"	"	"	
------------------------	--------	--------	--	--	---	---	---	--

GBTEX+TMBs

1,2,4-Trimethylbenzene	ND	0.00200	mg/kg	1	B1D0908	04/09/2021	04/12/2021	U
1,3,5-Trimethylbenzene	ND	0.00200	"	"	"	"	"	U
Benzene	ND	0.00200	"	"	"	"	"	U
Ethylbenzene	ND	0.00200	"	"	"	"	"	U
Toluene	ND	0.00200	"	"	"	"	"	U
Gasoline Range Hydrocarbons	ND	0.200	"	"	"	"	"	U
Xylenes, total	ND	0.00200	"	"	"	"	"	U

Surrogate: 1,2-Dichloroethane-d4	102 %	70-130			"	"	"	
----------------------------------	-------	--------	--	--	---	---	---	--

Origins Laboratory, Inc.



The results in this report apply to the samples analyzed in accordance with the chain of custody document. This analytical report must be reproduced in its entirety.

Eagle Environmental Consulting, Inc.
8000 W 44th Ave
Wheat Ridge CO 80033

Martin C Eckert III
Project Number: 425777561
Project: Noble - Dinner #6-34

TB-SS-01@4'
4/5/2021 11:55:00AM

Analyte	Result	Min Detection Limit	Reporting Limit	Units	Dilution	Batch	Prepared	Analyzed	Notes
---------	--------	---------------------	-----------------	-------	----------	-------	----------	----------	-------

Origins Laboratory, Inc.
Y104150-01 (Soil)

GBTEX+TMBs

Surrogate: Toluene-d8	95.1 %		70-130			B1D09 08	04/09/2021	04/12/2021	
Surrogate: 4-Bromofluorobenzene	95.4 %		70-130			"	"	"	

Metals (Saturated Paste Prep)

Calcium	2.07			me/L	1	[none]	04/12/2021	04/14/2021	
Magnesium	0.74			"	"	"	"	"	
Sodium	0.34			"	"	"	"	"	

PAH by EPA 8270D SIM

1-Methylnaphthalene	ND	0.00048	0.00067	mg/Kg	1	L547059	04/14/2021	04/14/2021	
2-Methylnaphthalene	ND	0.000542	0.00067	"	"	"	"	"	
Acenaphthene	ND	0.000431	0.00067	"	"	"	"	"	
Anthracene	ND	0.000426	0.00067	"	"	"	"	"	
Benzo(a)anthracene	ND	0.000441	0.00067	"	"	"	"	"	
Benzo(a)pyrene	0.000217	0.000133	0.00067	"	"	"	"	"	J
Benzo(b)fluoranthene	ND	0.000138	0.00067	"	"	"	"	"	
Benzo(k)fluoranthene	ND	0.000486	0.00067	"	"	"	"	"	
Chrysene	ND	0.000256	0.00067	"	"	"	"	"	
Dibenz(a,h)anthracene	ND	0.000279	0.00067	"	"	"	"	"	
Fluoranthene	ND	0.000529	0.00067	"	"	"	"	"	

Origins Laboratory, Inc.



The results in this report apply to the samples analyzed in accordance with the chain of custody document. This analytical report must be reproduced in its entirety.

Eagle Environmental Consulting, Inc.
8000 W 44th Ave
Wheat Ridge CO 80033

Martin C Eckert III
Project Number: 425777561
Project: Noble - Dinner #6-34

TB-SS-01@4'
4/5/2021 11:55:00AM

Analyte	Result	Min Detection Limit	Reporting Limit	Units	Dilution	Batch	Prepared	Analyzed	Notes
---------	--------	---------------------	-----------------	-------	----------	-------	----------	----------	-------

Waypoint Analytical, Inc.
Y104150-01 (Soil)

PAH by EPA 8270D SIM

Fluorene	ND	0.000501	0.00067	mg/Kg	1	L547059	04/14/2021	04/14/2021
Indeno(1,2,3-cd)pyrene	ND	0.000344	0.00067	"	"	"	"	"
Naphthalene	ND	0.000467	0.00067	"	"	"	"	"
Pyrene	ND	0.000387	0.00067	"	"	"	"	"

Surrogate: 2-Fluorobiphenyl	46.8 %	33-115	"	"	"
Surrogate: 4-Terphenyl-d14	62.2 %	33-122	"	"	"
Surrogate: Nitrobenzene-d5	42 %	29-110	"	"	"

pH in Soil by EPA 9045D

pH	7.06	pH Units	1	B1D1214	04/12/2021	04/12/2021
----	------	----------	---	---------	------------	------------

SAR by 20B Saturated Paste

SAR	0.29	1	[none]	04/12/2021	04/14/2021
-----	------	---	--------	------------	------------

Specific Conductance by Modified 9050A

Specific Conductance (EC)	0.327	0.00500	mmhos/cm	1	B1D1215	04/12/2021	04/12/2021
---------------------------	-------	---------	----------	---	---------	------------	------------

Origins Laboratory, Inc.



The results in this report apply to the samples analyzed in accordance with the chain of custody document. This analytical report must be reproduced in its entirety.

Eagle Environmental Consulting, Inc.
8000 W 44th Ave
Wheat Ridge CO 80033

Martin C Eckert III
Project Number: 425777561
Project: Noble - Dinner #6-34

TB-SS-06@0-0.5'
4/5/2021 12:22:00PM

Analyte	Result	Min Detection Limit	Reporting Limit	Units	Dilution	Batch	Prepared	Analyzed	Notes
---------	--------	---------------------	-----------------	-------	----------	-------	----------	----------	-------

AAL, Inc.
Y104150-02 (Soil)

Boron (Sorbitol)

Boron	0.3		mg/L	1	[none]	04/12/2021	04/14/2021	
-------	-----	--	------	---	--------	------------	------------	--

DRO/ORO by EPA 8015D

Diesel (C10-C28)	ND	25.0	mg/kg	1	B1D0909	04/09/2021	04/09/2021	U
Residual Range Organics (C28-C40)	ND	100	"	"	"	"	"	U

Surrogate: o-Terphenyl	65.3 %	50-150			"	"	"	
------------------------	--------	--------	--	--	---	---	---	--

GBTEX+TMBs

1,2,4-Trimethylbenzene	ND	0.00200	mg/kg	1	B1D0908	04/09/2021	04/12/2021	U
1,3,5-Trimethylbenzene	ND	0.00200	"	"	"	"	"	U
Benzene	ND	0.00200	"	"	"	"	"	U
Ethylbenzene	ND	0.00200	"	"	"	"	"	U
Toluene	ND	0.00200	"	"	"	"	"	U
Gasoline Range Hydrocarbons	ND	0.200	"	"	"	"	"	U
Xylenes, total	0.00560	0.00200	"	"	"	"	"	

Surrogate: 1,2-Dichloroethane-d4	103 %	70-130			"	"	"	
Surrogate: Toluene-d8	95.6 %	70-130			"	"	"	

Origins Laboratory, Inc.



The results in this report apply to the samples analyzed in accordance with the chain of custody document. This analytical report must be reproduced in its entirety.

Eagle Environmental Consulting, Inc.
8000 W 44th Ave
Wheat Ridge CO 80033

Martin C Eckert III
Project Number: 425777561
Project: Noble - Dinner #6-34

TB-SS-06@0-0.5'
4/5/2021 12:22:00PM

Analyte	Result	Min Detection Limit	Reporting Limit	Units	Dilution	Batch	Prepared	Analyzed	Notes
---------	--------	---------------------	-----------------	-------	----------	-------	----------	----------	-------

Origins Laboratory, Inc.
Y104150-02 (Soil)

GBTEX+TMBs

Surrogate: 4-Bromofluorobenzene	96.0 %	70-130	B1D09 08	04/09/2021	04/12/2021
---------------------------------	--------	--------	-------------	------------	------------

Metals (Saturated Paste Prep)

Calcium	1.26	me/L	1	[none]	04/12/2021	04/14/2021
Magnesium	0.48	"	"	"	"	"
Sodium	0.31	"	"	"	"	"

PAH by EPA 8270D SIM

1-Methylnaphthalene	ND	0.00048	0.00067	mg/Kg	1	L547059	04/14/2021	04/14/2021
2-Methylnaphthalene	ND	0.000542	0.00067	"	"	"	"	"
Acenaphthene	ND	0.000431	0.00067	"	"	"	"	"
Anthracene	ND	0.000426	0.00067	"	"	"	"	"
Benzo(a)anthracene	ND	0.000441	0.00067	"	"	"	"	"
Benzo(a)pyrene	0.000601	0.000133	0.00067	"	"	"	"	" J
Benzo(b)fluoranthene	0.000745	0.000138	0.00067	"	"	"	"	"
Benzo(k)fluoranthene	ND	0.000486	0.00067	"	"	"	"	"
Chrysene	0.000613	0.000256	0.00067	"	"	"	"	" J
Dibenz(a,h)anthracene	ND	0.000279	0.00067	"	"	"	"	"
Fluoranthene	0.00083	0.000529	0.00067	"	"	"	"	"
Fluorene	ND	0.000501	0.00067	"	"	"	"	"
Indeno(1,2,3-cd)pyrene	0.00047	0.000344	0.00067	"	"	"	"	" J

Origins Laboratory, Inc.

The results in this report apply to the samples analyzed in accordance with the chain of custody document. This analytical report must be reproduced in its entirety.

Eagle Environmental Consulting, Inc.
8000 W 44th Ave
Wheat Ridge CO 80033

Martin C Eckert III
Project Number: 425777561
Project: Noble - Dinner #6-34

TB-SS-06@0-0.5'
4/5/2021 12:22:00PM

Analyte	Result	Min Detection Limit	Reporting Limit	Units	Dilution	Batch	Prepared	Analyzed	Notes
---------	--------	---------------------	-----------------	-------	----------	-------	----------	----------	-------

Waypoint Analytical, Inc.
Y104150-02 (Soil)

PAH by EPA 8270D SIM

Naphthalene	ND	0.000467	0.00067	mg/Kg	1	L547059	04/14/2021	04/14/2021	
Pyrene	0.000917	0.000387	0.00067	"	"	"	"	"	

Surrogate: 2-Fluorobiphenyl	55.7 %		33-115			"	"	"	
Surrogate: 4-Terphenyl-d14	69.6 %		33-122			"	"	"	
Surrogate: Nitrobenzene-d5	47.6 %		29-110			"	"	"	

pH in Soil by EPA 9045D

pH	4.34			pH Units	1	B1D1214	04/12/2021	04/12/2021	
----	-------------	--	--	----------	---	---------	------------	------------	--

SAR by 20B Saturated Paste

SAR	0.33				1	[none]	04/12/2021	04/14/2021	
-----	-------------	--	--	--	---	--------	------------	------------	--

Specific Conductance by Modified 9050A

Specific Conductance (EC)	0.282		0.00500	mmhos/cm	1	B1D1215	04/12/2021	04/12/2021	
---------------------------	--------------	--	---------	----------	---	---------	------------	------------	--

Origins Laboratory, Inc.



The results in this report apply to the samples analyzed in accordance with the chain of custody document. This analytical report must be reproduced in its entirety.

Eagle Environmental Consulting, Inc.
8000 W 44th Ave
Wheat Ridge CO 80033

Martin C Eckert III
Project Number: 425777561
Project: Noble - Dinner #6-34

Volatile Organic Compounds by GC/MS SW846 8260D - Quality Control
Origins Laboratory, Inc.

Analyte	Result	Reporting Limit	Units	Spike Level	Source Result	%REC	%REC Limits	RPD	RPD Limit	Notes
Batch B1D0908 - EPA 5030 (soil)										
Blank (B1D0908-BLK1)					Prepared: 04/09/2021 Analyzed: 04/09/2021					
1,2,4-Trimethylbenzene	ND	0.00200	mg/kg							U
Naphthalene	ND	0.0100	"							U
1,3,5-Trimethylbenzene	ND	0.00200	"							U
Benzene	ND	0.00200	"							U
Ethylbenzene	ND	0.00200	"							U
Toluene	ND	0.00200	"							U
Xylenes, total	ND	0.00200	"							U
Gasoline Range Hydrocarbons	ND	0.200	"							U
Surrogate: 1,2-Dichloroethane-d4	0.12		"	0.125		99.4	70-130			
Surrogate: Toluene-d8	0.13		"	0.125		100	70-130			
Surrogate: 4-Bromofluorobenzene	0.12		"	0.125		97.7	70-130			

Origins Laboratory, Inc.



The results in this report apply to the samples analyzed in accordance with the chain of custody document. This analytical report must be reproduced in its entirety.

Eagle Environmental Consulting, Inc.
8000 W 44th Ave
Wheat Ridge CO 80033

Martin C Eckert III
Project Number: 425777561
Project: Noble - Dinner #6-34

Volatile Organic Compounds by GC/MS SW846 8260D - Quality Control
Origins Laboratory, Inc.

Analyte	Result	Reporting Limit	Units	Spike Level	Source Result	%REC	%REC Limits	RPD	RPD Limit	Notes
Batch B1D0908 - EPA 5030 (soil)										
LCS (B1D0908-BS1)					Prepared: 04/09/2021 Analyzed: 04/09/2021					
1,2,4-Trimethylbenzene	0.0572	0.00200	mg/kg	0.0500		114	70-130			
Naphthalene	0.0559	0.0100	"	0.0500		112	70-130			
1,3,5-Trimethylbenzene	0.0570	0.00200	"	0.0500		114	70-130			
Benzene	0.0539	0.00200	"	0.0500		108	70-130			
Ethylbenzene	0.0554	0.00200	"	0.0500		111	70-130			
m,p-Xylene	0.110	0.00400	"	0.100		110	70-130			
o-Xylene	0.0567	0.00200	"	0.0500		113	70-130			
Toluene	0.0531	0.00200	"	0.0500		106	70-130			
Surrogate: 1,2-Dichloroethane-d4	0.12		"	0.125		97.4	70-130			
Surrogate: Toluene-d8	0.12		"	0.125		98.4	70-130			
Surrogate: 4-Bromofluorobenzene	0.13		"	0.125		100	70-130			

Origins Laboratory, Inc.



The results in this report apply to the samples analyzed in accordance with the chain of custody document. This analytical report must be reproduced in its entirety.

Eagle Environmental Consulting, Inc.
8000 W 44th Ave
Wheat Ridge CO 80033

Martin C Eckert III
Project Number: 425777561
Project: Noble - Dinner #6-34

Volatile Organic Compounds by GC/MS SW846 8260D - Quality Control
Origins Laboratory, Inc.

Analyte	Result	Reporting Limit	Units	Spike Level	Source Result	%REC	%REC Limits	RPD	RPD Limit	Notes
Batch B1D0908 - EPA 5030 (soil)										
Matrix Spike (B1D0908-MS1)		Source: Y104141-01			Prepared: 04/09/2021 Analyzed: 04/09/2021					
1,2,4-Trimethylbenzene	0.0579	0.00200	mg/kg	0.0500	ND	116	70-130			
Naphthalene	0.0607	0.0100	"	0.0500	ND	121	70-130			
1,3,5-Trimethylbenzene	0.0565	0.00200	"	0.0500	ND	113	70-130			
Benzene	0.0534	0.00200	"	0.0500	ND	107	70-130			
Ethylbenzene	0.0551	0.00200	"	0.0500	ND	110	70-130			
m,p-Xylene	0.110	0.00400	"	0.100	ND	110	70-130			
o-Xylene	0.0545	0.00200	"	0.0500	ND	109	70-130			
Toluene	0.0528	0.00200	"	0.0500	ND	106	70-130			
Surrogate: 1,2-Dichloroethane-d4	0.13		"	0.125		101	70-130			
Surrogate: Toluene-d8	0.12		"	0.125		99.0	70-130			
Surrogate: 4-Bromofluorobenzene	0.13		"	0.125		101	70-130			

Origins Laboratory, Inc.



The results in this report apply to the samples analyzed in accordance with the chain of custody document. This analytical report must be reproduced in its entirety.

Eagle Environmental Consulting, Inc.
8000 W 44th Ave
Wheat Ridge CO 80033

Martin C Eckert III
Project Number: 425777561
Project: Noble - Dinner #6-34

Volatile Organic Compounds by GC/MS SW846 8260D - Quality Control
Origins Laboratory, Inc.

Analyte	Result	Reporting Limit	Units	Spike Level	Source Result	%REC	%REC Limits	RPD	RPD Limit	Notes
Batch B1D0908 - EPA 5030 (soil)										
Matrix Spike Dup (B1D0908-MSD1)		Source: Y104141-01			Prepared: 04/09/2021 Analyzed: 04/09/2021					
1,2,4-Trimethylbenzene	0.0545	0.00200	mg/kg	0.0500	ND	109	70-130	5.94	20	
Naphthalene	0.0578	0.0100	"	0.0500	ND	116	70-130	4.86	20	
1,3,5-Trimethylbenzene	0.0537	0.00200	"	0.0500	ND	107	70-130	4.97	20	
Benzene	0.0515	0.00200	"	0.0500	ND	103	70-130	3.59	20	
Ethylbenzene	0.0569	0.00200	"	0.0500	ND	114	70-130	3.32	20	
m,p-Xylene	0.115	0.00400	"	0.100	ND	115	70-130	3.99	20	
o-Xylene	0.0582	0.00200	"	0.0500	ND	116	70-130	6.56	20	
Toluene	0.0509	0.00200	"	0.0500	ND	102	70-130	3.66	20	
Surrogate: 1,2-Dichloroethane-d4	0.12		"	0.125		98.4	70-130			
Surrogate: Toluene-d8	0.12		"	0.125		98.7	70-130			
Surrogate: 4-Bromofluorobenzene	0.13		"	0.125		104	70-130			

Origins Laboratory, Inc.



The results in this report apply to the samples analyzed in accordance with the chain of custody document. This analytical report must be reproduced in its entirety.

Eagle Environmental Consulting, Inc.
8000 W 44th Ave
Wheat Ridge CO 80033

Martin C Eckert III
Project Number: 425777561
Project: Noble - Dinner #6-34

Volatile Organic Compounds by GC/MS SW846 8260D - Quality Control
Origins Laboratory, Inc.

Analyte	Result	Reporting Limit	Units	Spike Level	Source Result	%REC	%REC Limits	RPD	RPD Limit	Notes
Batch B1D0909 - EPA 3550B										
Blank (B1D0909-BLK1)					Prepared: 04/09/2021 Analyzed: 04/09/2021					
Diesel (C10-C28)	ND	25.0	mg/kg							U
Residual Range Organics (C28-C40)	ND	100	"							U
Surrogate: o-Terphenyl	18		"	25.0		73.8	50-150			

Origins Laboratory, Inc.



The results in this report apply to the samples analyzed in accordance with the chain of custody document. This analytical report must be reproduced in its entirety.

Eagle Environmental Consulting, Inc.
8000 W 44th Ave
Wheat Ridge CO 80033

Martin C Eckert III
Project Number: 425777561
Project: Noble - Dinner #6-34

Extractable Petroleum Hydrocarbons by 8015D - Quality Control
Origins Laboratory, Inc.

Analyte	Result	Reporting Limit	Units	Spike Level	Source Result	%REC	%REC Limits	RPD	RPD Limit	Notes
---------	--------	-----------------	-------	-------------	---------------	------	-------------	-----	-----------	-------

Batch B1D0909 - EPA 3550B

LCS (B1D0909-BS1)

Prepared: 04/09/2021 Analyzed: 04/09/2021

Diesel (C10-C28)	928	50.0	mg/kg	1000		92.8	70-130			
Residual Range Organics (C28-C40)	885	200	"	1000		88.5	70-130			
Surrogate: o-Terphenyl	39		"	50.0		78.1	50-150			

Origins Laboratory, Inc.



The results in this report apply to the samples analyzed in accordance with the chain of custody document. This analytical report must be reproduced in its entirety.

Eagle Environmental Consulting, Inc.
8000 W 44th Ave
Wheat Ridge CO 80033

Martin C Eckert III
Project Number: 425777561
Project: Noble - Dinner #6-34

Extractable Petroleum Hydrocarbons by 8015D - Quality Control
Origins Laboratory, Inc.

Analyte	Result	Reporting Limit	Units	Spike Level	Source Result	%REC	%REC Limits	RPD	RPD Limit	Notes
---------	--------	-----------------	-------	-------------	---------------	------	-------------	-----	-----------	-------

Batch B1D0909 - EPA 3550B

Matrix Spike (B1D0909-MS1)		Source: Y104141-01			Prepared: 04/09/2021 Analyzed: 04/09/2021					
Diesel (C10-C28)	930	50.0	mg/kg	1000	ND	93.0	70-130			
Residual Range Organics (C28-C40)	879	200	"	1000	ND	87.9	70-130			
Surrogate: o-Terphenyl	37		"	50.0		74.7	50-150			

Origins Laboratory, Inc.



The results in this report apply to the samples analyzed in accordance with the chain of custody document. This analytical report must be reproduced in its entirety.

Eagle Environmental Consulting, Inc.
8000 W 44th Ave
Wheat Ridge CO 80033

Martin C Eckert III
Project Number: 425777561
Project: Noble - Dinner #6-34

Extractable Petroleum Hydrocarbons by 8015D - Quality Control
Origins Laboratory, Inc.

Analyte	Result	Reporting Limit	Units	Spike Level	Source Result	%REC	%REC Limits	RPD	RPD Limit	Notes
---------	--------	-----------------	-------	-------------	---------------	------	-------------	-----	-----------	-------

Batch B1D0909 - EPA 3550B

Matrix Spike Dup (B1D0909-MSD1)		Source: Y104141-01			Prepared: 04/09/2021 Analyzed: 04/09/2021					
Diesel (C10-C28)	867	50.0	mg/kg	1000	ND	86.7	70-130	6.96	35	
Residual Range Organics (C28-C40)	812	200	"	1000	ND	81.2	70-130	7.83	35	
Surrogate: o-Terphenyl	34		"	50.0		68.4	50-150			

Origins Laboratory, Inc.



The results in this report apply to the samples analyzed in accordance with the chain of custody document. This analytical report must be reproduced in its entirety.

Eagle Environmental Consulting, Inc.
8000 W 44th Ave
Wheat Ridge CO 80033

Martin C Eckert III
Project Number: 425777561
Project: Noble - Dinner #6-34

Extractable Petroleum Hydrocarbons by 8015D - Quality Control

Origins Laboratory, Inc.

Analyte	Result	Reporting Limit	Units	Spike Level	Source Result	%REC	%REC Limits	RPD	RPD Limit	Notes
---------	--------	-----------------	-------	-------------	---------------	------	-------------	-----	-----------	-------

Saturated Paste - Quality Control

Origins Laboratory, Inc.

Analyte	Result	Reporting Limit	Units	Spike Level	Source Result	%REC	%REC Limits	RPD	RPD Limit	Notes
---------	--------	-----------------	-------	-------------	---------------	------	-------------	-----	-----------	-------

Batch B1D1214 - NO PREP

Duplicate (B1D1214-DUP1)

Source: Y104141-01

Prepared: 04/12/2021 Analyzed: 04/12/2021

pH	7.23		pH Units	7.15		1.11	25
----	------	--	----------	------	--	------	----

Batch B1D1215 - NO PREP

Blank (B1D1215-BLK1)

Prepared: 04/12/2021 Analyzed: 04/12/2021

Specific Conductance (EC)	0.00210	0.00500	mmhos/cm
---------------------------	---------	---------	----------

Duplicate (B1D1215-DUP1)

Source: Y104141-01

Prepared: 04/12/2021 Analyzed: 04/12/2021

Specific Conductance (EC)	0.243	0.00500	mmhos/cm	0.237		2.42	25
---------------------------	-------	---------	----------	-------	--	------	----

Origins Laboratory, Inc.



The results in this report apply to the samples analyzed in accordance with the chain of custody document. This analytical report must be reproduced in its entirety.

Eagle Environmental Consulting, Inc.
8000 W 44th Ave
Wheat Ridge CO 80033

Martin C Eckert III
Project Number: 425777561
Project: Noble - Dinner #6-34

PAH by EPA 8270D SIM - Quality Control
Waypoint Analytical, Inc.

Analyte	Result	Reporting Limit	Units	Spike Level	Source Result	%REC	%REC Limits	RPD	RPD Limit	Notes
---------	--------	-----------------	-------	-------------	---------------	------	-------------	-----	-----------	-------

Batch L547059 - 3550B

MSD (L 90686-MSD-L547059)		Source: Y104150-01			Prepared: 04/14/2021 Analyzed: 04/14/2021					
Chrysene	0.119	0.000256	mg/Kg	0.165	<0.000256	72.1	30-130	0.8	30	
1-Methylnaphthalene	0.1	0.00048	"	0.165	<0.000480	60.6	30-130	2.1	30	
2-Methylnaphthalene	0.101	0.000542	"	0.165	<0.000542	61.2	30-130	3.6	30	
Acenaphthene	0.115	0.000431	"	0.165	<0.000431	69.6	30-130	2.6	30	
Anthracene	0.119	0.000426	"	0.165	<0.000426	72.1	30-130	0.8	30	
Benzo(a)anthracene	0.109	0.000441	"	0.165	<0.000441	66	30-130	1.8	30	
Pyrene	0.118	0.000387	"	0.165	<0.000387	71.5	30-130	0.8	30	
Naphthalene	0.0939	0.000467	"	0.165	<0.000467	56.9	30-130	2.3	30	
Indeno(1,2,3-cd)pyrene	0.0918	0.000344	"	0.165	<0.000344	55.6	30-130	7.6	30	
Fluorene	0.117	0.000501	"	0.165	<0.000501	70.9	30-130	2.5	30	
Fluoranthene	0.117	0.000529	"	0.165	<0.000529	70.9	30-130	2.5	30	
Dibenz(a,h)anthracene	0.0997	0.000279	"	0.165	<0.000279	60.4	30-130	7	30	
Benzo(b)fluoranthene	0.0868	0.000138	"	0.165	<0.000138	52.6	30-130	6.2	30	
Benzo(k)fluoranthene	0.106	0.000486	"	0.165	<0.000486	64.2	30-130	0	30	
Benzo(a)pyrene	0.119	0.000133	"	0.165	0.000217	72.1	30-130	0	30	
Surrogate: 2-Fluorobiphenyl	58.1		"	0.33	156	58.1	33-115			
Surrogate: 4-Terphenyl-d14	60.9		"	0.33	207	60.9	33-122			
Surrogate: Nitrobenzene-d5	49.6		"	0.33	140	49.6	29-110			

MS (L 90686-MS-L547059)		Source: Y104150-01			Prepared: 04/14/2021 Analyzed: 04/14/2021					
Benzo(a)pyrene	0.119	0.000133	mg/Kg	0.163	0.000217	73	30-130			
Chrysene	0.118	0.000256	"	0.163	<0.000256	72.3	30-130			
Pyrene	0.119	0.000387	"	0.163	<0.000387	73	30-130			
Naphthalene	0.0917	0.000467	"	0.163	<0.000467	56.2	30-130			
Indeno(1,2,3-cd)pyrene	0.0991	0.000344	"	0.163	<0.000344	60.7	30-130			
Fluorene	0.114	0.000501	"	0.163	<0.000501	69.9	30-130			
Fluoranthene	0.12	0.000529	"	0.163	<0.000529	73.6	30-130			

Origins Laboratory, Inc.

The results in this report apply to the samples analyzed in accordance with the chain of custody document. This analytical report must be reproduced in its entirety.

Eagle Environmental Consulting, Inc.
8000 W 44th Ave
Wheat Ridge CO 80033

Martin C Eckert III
Project Number: 425777561
Project: Noble - Dinner #6-34

PAH by EPA 8270D SIM - Quality Control
Waypoint Analytical, Inc.

Analyte	Result	Reporting Limit	Units	Spike Level	Source Result	%REC	%REC Limits	RPD	RPD Limit	Notes
---------	--------	-----------------	-------	-------------	---------------	------	-------------	-----	-----------	-------

Batch L547059 - 3550B

MS (L 90686-MS-L547059)		Source: Y104150-01			Prepared: 04/14/2021 Analyzed: 04/14/2021					
Dibenz(a,h)anthracene	0.107	0.000279	mg/Kg	0.163	<0.000279	65.6	30-130			
Benzo(b)fluoranthene	0.0924	0.000138	"	0.163	<0.000138	56.6	30-130			
Benzo(a)anthracene	0.111	0.000441	"	0.163	<0.000441	68	30-130			
Anthracene	0.118	0.000426	"	0.163	<0.000426	72.3	30-130			
Acenaphthene	0.112	0.000431	"	0.163	<0.000431	68.7	30-130			
2-Methylnaphthalene	0.0974	0.000542	"	0.163	<0.000542	59.7	30-130			
Benzo(k)fluoranthene	0.106	0.000486	"	0.163	<0.000486	65	30-130			
1-Methylnaphthalene	0.0979	0.00048	"	0.163	<0.000480	60	30-130			
Surrogate: Nitrobenzene-d5	49.2		"	0.327	140	49.2	29-110			
Surrogate: 2-Fluorobiphenyl	57.7		"	0.327	156	57.7	33-115			
Surrogate: 4-Terphenyl-d14	62.6		"	0.327	207	62.6	33-122			

LCS (LCS-L547059)

Prepared: 04/14/2021 Analyzed: 04/14/2021

Dibenz(a,h)anthracene	0.0972	0.000279	mg/Kg	0.167		58.2	30-130			
Fluoranthene	0.125	0.000529	"	0.167		74.8	30-130			
Pyrene	0.126	0.000387	"	0.167		75.4	30-130			
Fluorene	0.117	0.000501	"	0.167		70	30-130			
Indeno(1,2,3-cd)pyrene	0.0959	0.000344	"	0.167		57.4	30-130			
Chrysene	0.121	0.000256	"	0.167		72.4	30-130			
Naphthalene	0.093	0.000467	"	0.167		55.6	30-130			
Benzo(b)fluoranthene	0.103	0.000138	"	0.167		61.6	30-130			
Benzo(a)pyrene	0.119	0.000133	"	0.167		71.2	30-130			
Benzo(a)anthracene	0.116	0.000441	"	0.167		69.4	30-130			
Acenaphthene	0.114	0.000431	"	0.167		68.2	30-130			
2-Methylnaphthalene	0.0992	0.000542	"	0.167		59.4	30-130			
1-Methylnaphthalene	0.0989	0.00048	"	0.167		59.2	30-130			
Anthracene	0.124	0.000426	"	0.167		74.2	30-130			

Origins Laboratory, Inc.

The results in this report apply to the samples analyzed in accordance with the chain of custody document. This analytical report must be reproduced in its entirety.

Eagle Environmental Consulting, Inc.
8000 W 44th Ave
Wheat Ridge CO 80033

Martin C Eckert III
Project Number: 425777561
Project: Noble - Dinner #6-34

PAH by EPA 8270D SIM - Quality Control
Waypoint Analytical, Inc.

Analyte	Result	Reporting Limit	Units	Spike Level	Source Result	%REC	%REC Limits	RPD	RPD Limit	Notes
---------	--------	-----------------	-------	-------------	---------------	------	-------------	-----	-----------	-------

Batch L547059 - 3550B

LCS (LCS-L547059)

Prepared: 04/14/2021 Analyzed: 04/14/2021

Benzo(k)fluoranthene	0.123	0.000486	mg/Kg	0.167		73.6	30-130			
Surrogate: Nitrobenzene-d5	53.1		"	0.333		53.1	29-110			
Surrogate: 4-Terphenyl-d14	67.8		"	0.333		67.8	33-122			
Surrogate: 2-Fluorobiphenyl	59.4		"	0.333		59.4	33-115			

LRB (LRB-L547059)

Prepared: 04/14/2021 Analyzed: 04/14/2021

Chrysene	ND	0.00067	mg/Kg				-			
Dibenz(a,h)anthracene	ND	0.00067	"				-			
Fluoranthene	ND	0.00067	"				-			
Fluorene	ND	0.00067	"				-			
Benzo(k)fluoranthene	ND	0.00067	"				-			
Naphthalene	ND	0.00067	"				-			
Indeno(1,2,3-cd)pyrene	ND	0.00067	"				-			
Benzo(b)fluoranthene	ND	0.00067	"				-			
Benzo(a)pyrene	ND	0.00067	"				-			
Benzo(a)anthracene	ND	0.00067	"				-			
Acenaphthene	ND	0.00067	"				-			
2-Methylnaphthalene	ND	0.00067	"				-			
1-Methylnaphthalene	ND	0.00067	"				-			
Pyrene	ND	0.00067	"				-			
Anthracene	ND	0.00067	"				-			
Surrogate: Nitrobenzene-d5	53.7		"	0.333		53.7	29-110			
Surrogate: 4-Terphenyl-d14	63.9		"	0.333		63.9	33-122			
Surrogate: 2-Fluorobiphenyl	60.9		"	0.333		60.9	33-115			

Origins Laboratory, Inc.



The results in this report apply to the samples analyzed in accordance with the chain of custody document. This analytical report must be reproduced in its entirety.

Eagle Environmental Consulting, Inc.
8000 W 44th Ave
Wheat Ridge CO 80033

Martin C Eckert III
Project Number: 425777561
Project: Noble - Dinner #6-34

Notes and Definitions

U Sample is Non-Detect.

J Estimated Value. Analyte below reported quantitation limit.

ND Analyte NOT DETECTED at or above the reporting limit

RPD Relative Percent Difference

All soil results are reported on a wet weight basis.

Origins Laboratory, Inc.



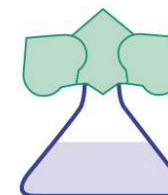
The results in this report apply to the samples analyzed in accordance with the chain of custody document. This analytical report must be reproduced in its entirety.

American Agricultural Laboratory, Inc.

700 West D Street / PO Box 370 / McCook, Nebraska 69001

Office: 308-345-3670 / FAX: 308-345-7880

www.AmAgLab.com



95029

ORIGINS LABORATORY INC

1725 ELK PLACE

DENVER CO 80211

NAME : ORIGINS

DATE RECEIVED: 04/12/2021

DATE REPORTED: 04/14/2021

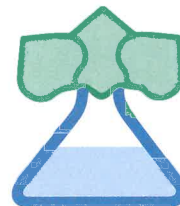
SOIL TEST RESULTS																		
LAB NUMBER	FIELD IDENTIFICATION			SAMPLE IDENTIFICATION		Depth Inches	pH		EL	SOLUBLE SALTS mod. SP mmhos/cm	OM LOI %	NITRATE-N (FIA)		PHOSPHORUS				
							1 : 1 Soil	Buffer Woodruff				P1 ppm	Bicarb ppm	P2 ppm	M2 ppm	M3 ppm		
3331147	Y104150			01		0-8												
3331148	Y104150			02		0-8												
LAB NUMBER	SULFATE-S Ca-P ppm		NH4OAc (Exchangeable)				DTPA				BORON Sorbitol ppm	EST. CATION EXCHANGE CAPACITY (CEC) me/100g	% SATURATION					
			K ppm	Ca ppm	Mg ppm	Na ppm	Zn ppm	Fe ppm	Mn ppm	Cu ppm			BASE	H	Ca	Mg	K	Na
3331147											0.1							
3331148											0.3							
LAB NUMBER	SOLUBLE (SAT. EXT.)			SODIUM ADSORPTION RATIO (SAR)	EXCH. SODIUM PERCENT (ESP)	GYPSUM REQ T/A	PARTICLE SIZE ANALYSIS				CHLORIDE		EXCH. NH4-N		ALUMINUM ppm	TOTAL N %		
	Ca me/L	Mg me/L	Na me/L				SAND %	SILT %	CLAY %	SOIL TEXTURE	ppm	lbs/A	ppm	lbs/A				
3331147	2.07	0.74	0.34	0.29	1	0												
3331148	1.26	0.48	0.31	0.33	1	0												
SUGGESTED FERTILIZER RECOMMENDATIONS																LIME REC 60% ECCE T/A		
LAB NUMBER	FIELD IDENTIFICATION	SAMPLE IDENTIFICATION	CROP TO BE GROWN	YIELD GOAL	N	P2O5	K2O	S	Zn	MgO	Fe	Mn	Cu	B	Cl			
3331147	Y104150	01																
3331148	Y104150	02																
Approved By: Bob Olsen																		
Analysis By: American Agricultural Lab																		
Recommendations By: American Agricultural Lab																		

American Agricultural Laboratory, Inc.

700 West D St. / P.O. Box 370 / McCook, Nebraska 69001

Office: 308-345-3670 / FAX: 308-345-7880 / www.AmAgLab.com

"Analysis You Can Grow With"®



ORIGINS LABORATORY INC
1725 ELK PLACE
DENVER, CO 80211

DATE RECEIVED: 4/12/2021
DATE REPORTED: 4/14/2021
ACCOUNT NO: 95029
GROWER: ORIGINS

SOIL BORON REPORT

Lab #	Field ID	Sample ID	B, mg/L
3331147	Y104150	1	0.1
3331148	Y104150	2	0.3

Pat Olson

Method Used:

Provin, T., and H. Zhang. 2014. DTPA and DTPA-Sorbitol Extraction of Micronutrients.
Soil Test Methods From the Southeastern United States 2014



Your Lab's letterhead here...

Address

City, St. Zip

Phone/Fax

SUBCONTRACT ORDER

Sending Laboratory:

Origins Laboratory, Inc.
1725 West Elk Place
Denver, CO 80211
Phone: 303.433.1322
Fax: 303.265.9645

Project Manager: Noelle Doyle Mathis

Subcontracted Laboratory:

American Agricultural Laboratory, Inc
210 East 1st Street
McCook, NE 69001
Phone: (308) 345-3670
Fax: (308) 345-7880

Work Order: Y104150

Analysis	Due	Expires	Comments
----------	-----	---------	----------

Sample ID: Y104150-01 Soil Sampled: 04/05/2021 11:55

SAR (Saturated Paste Prep)	04/16/2021	04/06/2021 11:55
Boron (DTPA Sorbitol)	04/16/2021	04/06/2021 11:55

Containers Supplied:

Sample ID: Y104150-02 Soil Sampled: 04/05/2021 12:22

SAR (Saturated Paste Prep)	04/16/2021	04/06/2021 12:22
Boron (DTPA Sorbitol)	04/16/2021	04/06/2021 12:22

Containers Supplied:

APR 12 2021

Released By

Date

4/9/21

Received By

Date

4/12/21



April 27, 2021

Eagle Environmental Consulting, Inc.

Martin C Eckert III

8000 W 44th Ave

Wheat Ridge CO 80033

Project Name - Noble - Dinner #6-34

Project Number - 425777561

Attached are your analytical results for Noble - Dinner #6-34 received by Origins Laboratory, Inc. April 26, 2021. This project is associated with Origins project number Y104457-01.

The analytical results in the following report were analyzed under the guidelines of EPA Methods. These methods are identified as follows; "SW" are defined in SW-846, "EPA" are defined in 40CFR part 136 and "SM" are defined in the most current revision of Standard Methods For the Examination of Water and Wastewater.

The analytical results apply specifically to the samples and analyses specified per the attached Chain of Custody. As such, this report shall not be reproduced except in full, without the written approval of Origin's laboratory.

Unless otherwise noted, the analytical results for all soil samples are reported on a wet weight basis. All analytical analyses were performed under NELAP guidelines unless noted by a data qualifier.

Any holding time exceedances, deviations from the method specifications or deviations from Origins Laboratory's Standard Operating Procedures are outlined in the case narrative.

Thank you for selecting Origins for your analytical needs. Please contact us with any questions concerning this report, or if we can help with anything at all.

Origins Laboratory, Inc.
303.433.1322
o-squad@oelabinc.com



1725 Elk Place, Denver, CO 80211 | Phone: 303.433.1322 | Fax: 303.265.9645

Eagle Environmental Consulting, Inc.

8000 W 44th Ave

Wheat Ridge CO 80033

Martin C Eckert III

Project Number: 425777561

Project: Noble - Dinner #6-34

CROSS REFERENCE REPORT

Sample ID	Laboratory ID	Matrix	Date Sampled	Date Received
Background-01@3'	Y104457-01	Soil	April 5, 2021 12:30	04/26/2021 15:57

Origins Laboratory, Inc.



The results in this report apply to the samples analyzed in accordance with the chain of custody document. This analytical report must be reproduced in its entirety.

Eagle Environmental Consulting, Inc.

8000 W 44th Ave

Wheat Ridge CO 80033

Martin C Eckert III

Project Number: 425777561

Project: Noble - Dinner #6-34

Origins Laboratory

F-012207-01-R1
Effective Date: 01/09/12

Sample Receipt Checklist

Origins Work Order: Y104457

Client: Eagle

Client Project ID: Dinner 6-34

Checklist Completed by: JG

Shipped Via: HD

(UPS, FedEx, Hand Delivered, Pick-up, etc.)

Date/time completed: 4/26/21

Airbill #: N/A

Matrix(s) Received: (Check all that apply): ☒ Soil/Solid

☐ Water

☐ Other:

Cooler Number/Temperature: 1 / 4.6 °C 1 °C 1 °C 1 °C (Describe)

Thermometer ID: T003

Requirement Description	Yes	No	N/A	Comments (if any)
If samples require cooling, was the temperature between 0°C to ≤ 6°C ⁽¹⁾ ?	<input checked="" type="checkbox"/>	<input type="checkbox"/>	<input type="checkbox"/>	
Is there ice present (document if blue ice is used)	<input checked="" type="checkbox"/>	<input type="checkbox"/>	<input type="checkbox"/>	
Are custody seals present on cooler? (if so, document in comments if they are signed and dated, broken or intact)	<input type="checkbox"/>	<input checked="" type="checkbox"/>	<input type="checkbox"/>	
Are custody seals present on each sample container? (if so, document in comments if they are signed and dated, broken or intact)	<input type="checkbox"/>	<input checked="" type="checkbox"/>	<input type="checkbox"/>	
Were all samples received intact ⁽¹⁾ ?	<input checked="" type="checkbox"/>	<input type="checkbox"/>	<input type="checkbox"/>	
Was adequate sample volume provided ⁽¹⁾ ?	<input checked="" type="checkbox"/>	<input type="checkbox"/>	<input type="checkbox"/>	
Are short holding time analytes or samples with HTs due within 48 hours present ⁽¹⁾ ?	<input type="checkbox"/>	<input checked="" type="checkbox"/>	<input type="checkbox"/>	
Is a chain-of-custody (COC) present and filled out completely ⁽¹⁾ ?	<input checked="" type="checkbox"/>	<input type="checkbox"/>	<input type="checkbox"/>	
Does the COC agree with the number and type of sample bottles received ⁽¹⁾ ?	<input checked="" type="checkbox"/>	<input type="checkbox"/>	<input type="checkbox"/>	
Do the sample IDs on the bottle labels match the COC ⁽¹⁾ ?	<input checked="" type="checkbox"/>	<input type="checkbox"/>	<input type="checkbox"/>	
Is the COC properly relinquished by the client with date and time recorded ⁽¹⁾ ?	<input checked="" type="checkbox"/>	<input type="checkbox"/>	<input type="checkbox"/>	
For volatiles in water – is there headspace (> ¼ inch bubble) present? If yes, contact client and note in narrative.	<input type="checkbox"/>	<input type="checkbox"/>	<input checked="" type="checkbox"/>	
Are samples preserved that require preservation and was it checked ⁽¹⁾ ? (note ID of confirmation instrument used in comments) / (preservation is not confirmed for subcontracted analyses in order to insure sample integrity)(pH <2 for samples preserved with HNO ₃ , HCL, H ₂ SO ₄) / (pH >10 for samples preserved with NaAsO ₂ +NaOH, ZnAc+NaOH)	<input type="checkbox"/>	<input type="checkbox"/>	<input checked="" type="checkbox"/>	
Additional Comments (if any):				

⁽¹⁾If NO, then contact the client before proceeding with analysis and note date, time and person contacted as well as the corrective action to in the additional comments (above) and the case narrative.

Reviewed by (Project Manager)

4/26/21
Date/Time Reviewed

Origins Laboratory, Inc.

The results in this report apply to the samples analyzed in accordance with the chain of custody document. This analytical report must be reproduced in its entirety.

Eagle Environmental Consulting, Inc.

8000 W 44th Ave

Wheat Ridge CO 80033

Martin C Eckert III

Project Number: 425777561

Project: Noble - Dinner #6-34

Background-01@3'

4/5/2021 12:30:00PM

Analyte	Result	Reporting Limit	Units	Dilution	Batch	Analyst	Prepared	Analyzed	Notes
---------	--------	--------------------	-------	----------	-------	---------	----------	----------	-------

Origins Laboratory, Inc.

Y104457-01 (Soil)

pH in Soil by EPA 9045D

pH	7.51	pH Units	1	B1D2707	DJL	04/27/2021	04/27/2021
----	------	----------	---	---------	-----	------------	------------

Origins Laboratory, Inc.



The results in this report apply to the samples analyzed in accordance with the chain of custody document. This analytical report must be reproduced in its entirety.

Eagle Environmental Consulting, Inc.
8000 W 44th Ave
Wheat Ridge CO 80033

Martin C Eckert III
Project Number: 425777561
Project: Noble - Dinner #6-34

Saturated Paste - Quality Control
Origins Laboratory, Inc.

Analyte	Result	Reporting Limit	Units	Spike Level	Source Result	%REC	%REC Limits	RPD	RPD Limit	Notes
---------	--------	-----------------	-------	-------------	---------------	------	-------------	-----	-----------	-------

Batch B1D2707 - NO PREP

Duplicate (B1D2707-DUP1)

Source: Y104428-01

Prepared: 04/27/2021 Analyzed: 04/27/2021

pH	7.11		pH Units		7.45			4.67	25	
----	------	--	----------	--	------	--	--	------	----	--

Origins Laboratory, Inc.



The results in this report apply to the samples analyzed in accordance with the chain of custody document. This analytical report must be reproduced in its entirety.

Eagle Environmental Consulting, Inc.

8000 W 44th Ave

Wheat Ridge CO 80033

Martin C Eckert III

Project Number: 425777561

Project: Noble - Dinner #6-34

Notes and Definitions

ND Analyte NOT DETECTED at or above the reporting limit

RPD Relative Percent Difference

All soil results are reported at a wet weight basis.

Origins Laboratory, Inc.



The results in this report apply to the samples analyzed in accordance with the chain of custody document. This analytical report must be reproduced in its entirety.



September 27, 2023

Eagle Environmental Consulting, LLC

Martin C Eckert III

8000 W 44th Ave

Wheat Ridge CO 80033

Project Name - Noble - Dinner #6-34

Project Number - 425777561

Attached are your analytical results for Noble - Dinner #6-34 received by Origins Laboratory, Inc. September 18, 2023. This project is associated with Origins project number Y309379-01.

The analytical results in the following report were analyzed under the guidelines of EPA Methods. These methods are identified as follows; "SW" are defined in SW-846, "EPA" are defined in 40CFR part 136 and "SM" are defined in the most current revision of Standard Methods For the Examination of Water and Wastewater.

The analytical results apply specifically to the samples and analyses specified per the attached Chain of Custody. As such, this report shall not be reproduced except in full, without the written approval of Origin's laboratory.

Unless otherwise noted, the analytical results for all soil samples are reported on a wet weight basis. All analytical analyses were performed under NELAP guidelines unless noted by a data qualifier.

Any holding time exceedances, deviations from the method specifications or deviations from Origins Laboratory's Standard Operating Procedures are outlined in the case narrative.

Thank you for selecting Origins for your analytical needs. Please contact us with any questions concerning this report, or if we can help with anything at all.

Origins Laboratory, Inc.
303.433.1322
o-squad@oelabinc.com



1725 Elk Place, Denver, CO 80211 | Phone: 303.433.1322 | Fax: 303.265.9645

Eagle Environmental Consulting, LLC
8000 W 44th Ave
Wheat Ridge CO 80033

Martin C Eckert III
Project Number: 425777561
Project: Noble - Dinner #6-34

CROSS REFERENCE REPORT

Sample ID	Laboratory ID	Matrix	Date Sampled	Date Received
CS-TB-SS-06@0-0.5'	Y309379-01	Soil	September 18, 2023 13:40	09/18/2023 17:57
HA-SS-01@0.5-1'	Y309379-02	Soil	September 18, 2023 13:45	09/18/2023 17:57
HA-SS-01@1-2'	Y309379-03	Soil	September 18, 2023 13:50	09/18/2023 17:57
HA-SS-02@0-0.5'	Y309379-04	Soil	September 18, 2023 14:00	09/18/2023 17:57
HA-SS-02@0.5-1'	Y309379-05	Soil	September 18, 2023 14:05	09/18/2023 17:57
HA-SS-03@0-0.5'	Y309379-06	Soil	September 18, 2023 14:15	09/18/2023 17:57
HA-SS-03@0.5-1'	Y309379-07	Soil	September 18, 2023 14:20	09/18/2023 17:57
HA-SS-04@0-0.5'	Y309379-08	Soil	September 18, 2023 14:30	09/18/2023 17:57
HA-SS-04@0.5-1'	Y309379-09	Soil	September 18, 2023 14:35	09/18/2023 17:57
HA-SS-05@0-0.5'	Y309379-10	Soil	September 18, 2023 14:40	09/18/2023 17:57
HA-SS-05@0.5-1'	Y309379-11	Soil	September 18, 2023 14:45	09/18/2023 17:57
HA-SS-06@0-0.5'	Y309379-12	Soil	September 18, 2023 15:15	09/18/2023 17:57
HA-SS-06@0.5-1'	Y309379-13	Soil	September 18, 2023 15:20	09/18/2023 17:57
HA-SS-07@0-0.5'	Y309379-14	Soil	September 18, 2023 15:25	09/18/2023 17:57

Origins Laboratory, Inc.



The results in this report apply to the samples analyzed in accordance with the chain of custody document. This analytical report must be reproduced in its entirety.

Eagle Environmental Consulting, LLC
8000 W 44th Ave
Wheat Ridge CO 80033

Martin C Eckert III
Project Number: 425777561
Project: Noble - Dinner #6-34

CROSS REFERENCE REPORT

Sample ID	Laboratory ID	Matrix	Date Sampled	Date Received
HA-SS-07@0.5-1'	Y309379-15	Soil	September 18, 2023 15:30	09/18/2023 17:57
HA-SS-08@0-0.5'	Y309379-16	Soil	September 18, 2023 15:45	09/18/2023 17:57
HA-SS-08@0.5-1'	Y309379-17	Soil	September 18, 2023 15:50	09/18/2023 17:57
HA-SS-09@0-0.5'	Y309379-18	Soil	September 18, 2023 15:55	09/18/2023 17:57
HA-SS-09@0.5-1'	Y309379-19	Soil	September 18, 2023 16:00	09/18/2023 17:57

Origins Laboratory, Inc.



The results in this report apply to the samples analyzed in accordance with the chain of custody document. This analytical report must be reproduced in its entirety.

Eagle Environmental Consulting, LLC
8000 W 44th Ave
Wheat Ridge CO 80033

Martin C Eckert III
Project Number: 425777561
Project: Noble - Dinner #6-34

www.originslaboratory.com

ORIGINS
LABORATORY, INC

U309379 page 1 of 2

Client: Eagle Environmental Consulting
Address: 8000 W. 44th Ave.
Wheat Ridge, CO 80033
Telephone Number: 303-433-0479
Email Address: mce@eagle-enviro.com

Project Manager: Martin Eckert III
Project Name: Dinner 6-34
Project Number: BU
Samples Collected By: BU

1725 Elk Place | Phone: 303.433.1322 | Fax: 303.265.9645 | Denver, CO 80211

Sample ID Description	Date Sampled	Time Sampled	# of Containers	Preservative				Matrix			Analysis		Sample Instructions
				Unpreserved	HCl	HNO ₃	Other	Groundwater	Soil	Air Summng Container #	Other		
CS-18-SS-0600-0.5'	9-18-23	1340	2	X					X				1st completed by
HA-SS-0100-0.5-1'		1345											2nd completed by
HA-SS-0100-1-2'		1350											3rd completed by
HA-SS-0200-0.5'		1400											
HA-SS-0200-0.5-1'		1405											
HA-SS-0300-0.5'		1415											
HA-SS-0300-0.5-1'		1420											
HA-SS-0400-0.5'		1430											
HA-SS-0400-0.5-1'		1435											
HA-SS-0500-0.5'		1440											

Relinquished By:	Date:	Time:	Received By:	Date:	Time:	Turnaround Time:
Blake Ulrich	9-18-23	1757	BU	9/19/23	1757	Same Day <input type="checkbox"/> 24 Hr <input type="checkbox"/> 48 Hr <input type="checkbox"/> Standard <input checked="" type="checkbox"/>

Date Results Needed: Noble

Temp Received: 3

Bill to Dan

Origins Laboratory, Inc.

Jefe Pellegrini

The results in this report apply to the samples analyzed in accordance with the chain of custody document. This analytical report must be reproduced in its entirety.

Eagle Environmental Consulting, LLC
8000 W 44th Ave
Wheat Ridge CO 80033

Martin C Eckert III
Project Number: 425777561
Project: Noble - Dinner #6-34

www.originslaboratory.com

page 2 of 2

4309339

Project Manager: Martin Eckert III

Project Name: Dinner 6-34

Project Number: —

Samples Collected By: BU

Client: Eagle Environmental Consulting

Address: 8000 W. 44th Ave.

Wheat Ridge, CO 80033

Telephone Number: 303-433-0479

Email Address: mce3@eagle-enviro.com

Sample ID Description	Date Sampled	Time Sampled	# of Containers	Preservative				Matrix			Analysis	Sample Instructions
				Unpreserved	HCl	HNO ₃	Other	Groundwater	Soil	Air Summa Canister #		
HA-SS-05@0.5-1'	9-18-23	1445	2	X				X				PH completed by 1
HA-SS-06@0-0.5'		1515										2
HA-SS-06@0.5-1'		1520										saturated paste
HA-SS-07@0-0.5'		1525										3
HA-SS-07@0.5-1'		1530										prep.
HA-SS-08@0-0.5'		1545										4
HA-SS-08@0.5-1'		1550										5
HA-SS-09@0-0.5'		1555										6
HA-SS-09@0.5-1'		1600										7
												8
												9
												10

Relinquished By:	Date:	Time:	Received By:	Date:	Time:	Turnaround Time:
Blake Ulrich	9-18-23	1757	WJ	9/19/23	1757	Same Day <input type="checkbox"/> 24 Hr <input type="checkbox"/>
						48 Hr <input type="checkbox"/> 72 Hr <input type="checkbox"/>
						Standard <input checked="" type="checkbox"/>

Date Results Needed: Noble

Temp Received: 3

Bill to Dan

1725 Elk Place | Denver, CO 80211 | Phone: 303.433.1322 | Fax: 303.265.9645

Origins Laboratory, Inc.

Jefe Pellegrini

The results in this report apply to the samples analyzed in accordance with the chain of custody document. This analytical report must be reproduced in its entirety.

Eagle Environmental Consulting, LLC
8000 W 44th Ave
Wheat Ridge CO 80033

Martin C Eckert III
Project Number: 425777561
Project: Noble - Dinner #6-34

Origins Laboratory

F-012207-01-R1
Effective Date: 01/09/12

Sample Receipt Checklist

Origins Work Order: 4309379

Client: Eagle

Client Project ID: Dinner 6-34

Checklist Completed by: CHS

Shipped Via: HD
(UPS, FedEx, Hand Delivered, Pick-up, etc.)

Date/time completed: 9/19/23

Airbill #: N/A

Matrix(s) Received: (Check all that apply): ☒ Soil/Solid

☐ Water ☐ Other:

Cooler Number/Temperature: 113 °C 1 °C 1 °C (Describe)

Thermometer ID: 1004

Requirement Description	Yes	No	N/A	Comments (if any)
If samples require cooling, was the temperature between 0°C to ≤ 6°C ⁽¹⁾ ?	<input checked="" type="checkbox"/>	<input type="checkbox"/>	<input type="checkbox"/>	
Is there ice present (document if blue ice is used)	<input checked="" type="checkbox"/>	<input type="checkbox"/>	<input type="checkbox"/>	
Are custody seals present on cooler? (if so, document in comments if they are signed and dated, broken or intact)	<input type="checkbox"/>	<input checked="" type="checkbox"/>	<input type="checkbox"/>	
Are custody seals present on each sample container? (if so, document in comments if they are signed and dated, broken or intact)	<input type="checkbox"/>	<input checked="" type="checkbox"/>	<input type="checkbox"/>	
Were all samples received intact ⁽¹⁾ ?	<input checked="" type="checkbox"/>	<input type="checkbox"/>	<input type="checkbox"/>	
Was adequate sample volume provided ⁽¹⁾ ?	<input checked="" type="checkbox"/>	<input type="checkbox"/>	<input type="checkbox"/>	
Are short holding time analytes or samples with HTs due within 48 hours present ⁽¹⁾ ?	<input type="checkbox"/>	<input checked="" type="checkbox"/>	<input type="checkbox"/>	
Is a chain-of-custody (COC) present and filled out completely ⁽¹⁾ ?	<input checked="" type="checkbox"/>	<input type="checkbox"/>	<input type="checkbox"/>	
Does the COC agree with the number and type of sample bottles received ⁽¹⁾ ?	<input checked="" type="checkbox"/>	<input type="checkbox"/>	<input type="checkbox"/>	
Do the sample IDs on the bottle labels match the COC ⁽¹⁾ ?	<input checked="" type="checkbox"/>	<input type="checkbox"/>	<input type="checkbox"/>	
Is the COC properly relinquished by the client with date and time recorded ⁽¹⁾ ?	<input checked="" type="checkbox"/>	<input type="checkbox"/>	<input type="checkbox"/>	
For volatiles in water – is there headspace (> ¼ inch bubble) present? If yes, contact client and note in narrative.	<input type="checkbox"/>	<input type="checkbox"/>	<input checked="" type="checkbox"/>	
Are samples preserved that require preservation and was it checked ⁽¹⁾ ? (note ID of confirmation instrument used in comments) / (preservation is not confirmed for subcontracted analyses in order to insure sample integrity)/(pH <2 for samples preserved with HNO ₃ , HCL, H ₂ SO ₄) / (pH >10 for samples preserved with NaAsO ₂ +NaOH, ZnAc+NaOH)	<input type="checkbox"/>	<input type="checkbox"/>	<input checked="" type="checkbox"/>	
Additional Comments (if any):				

⁽¹⁾ If NO, then contact the client before proceeding with analysis and note date/time and person contacted as well as the corrective action to in the additional comments (above) and the case narrative.

Reviewed by (Project Manager)

Date/Time Reviewed 9/19/23

Origins Laboratory, Inc.

Jefe Pellegrini

The results in this report apply to the samples analyzed in accordance with the chain of custody document. This analytical report must be reproduced in its entirety.

Eagle Environmental Consulting, LLC
8000 W 44th Ave
Wheat Ridge CO 80033

Martin C Eckert III
Project Number: 425777561
Project: Noble - Dinner #6-34

CS-TB-SS-06@0-0.5'
9/18/2023 1:40:00PM

Analyte	Result	Reporting	Units	Dilution	Batch	Analyst	Prepared	Analyzed	Notes
		Limit							

Origins Laboratory, Inc.
Y309379-01 (Soil)

pH in Soil by 9045D

pH	7.32	pH Units	1	B312301	ACN	09/23/2023	09/24/2023
----	------	----------	---	---------	-----	------------	------------

Origins Laboratory, Inc.



The results in this report apply to the samples analyzed in accordance with the chain of custody document. This analytical report must be reproduced in its entirety.

Eagle Environmental Consulting, LLC
8000 W 44th Ave
Wheat Ridge CO 80033

Martin C Eckert III
Project Number: 425777561
Project: Noble - Dinner #6-34

HA-SS-01@0.5-1'

9/18/2023 1:45:00PM

Analyte	Result	Reporting	Units	Dilution	Batch	Analyst	Prepared	Analyzed	Notes
		Limit							

Origins Laboratory, Inc.
Y309379-02 (Soil)

pH in Soil by 9045D

pH	7.54	pH Units	1	B312301	ACN	09/23/2023	09/24/2023
----	------	----------	---	---------	-----	------------	------------

Origins Laboratory, Inc.



The results in this report apply to the samples analyzed in accordance with the chain of custody document. This analytical report must be reproduced in its entirety.

Eagle Environmental Consulting, LLC
8000 W 44th Ave
Wheat Ridge CO 80033

Martin C Eckert III
Project Number: 425777561
Project: Noble - Dinner #6-34

HA-SS-01@1-2'

9/18/2023 1:50:00PM

Analyte	Result	Reporting	Units	Dilution	Batch	Analyst	Prepared	Analyzed	Notes
		Limit							

Origins Laboratory, Inc.
Y309379-03 (Soil)

pH in Soil by 9045D

pH	7.22	pH Units	1	B312301	ACN	09/23/2023	09/24/2023
----	------	----------	---	---------	-----	------------	------------

Origins Laboratory, Inc.



The results in this report apply to the samples analyzed in accordance with the chain of custody document. This analytical report must be reproduced in its entirety.

Eagle Environmental Consulting, LLC

8000 W 44th Ave

Wheat Ridge CO 80033

Martin C Eckert III

Project Number: 425777561

Project: Noble - Dinner #6-34

HA-SS-02@0-0.5'

9/18/2023 2:00:00PM

Analyte	Result	Reporting	Units	Dilution	Batch	Analyst	Prepared	Analyzed	Notes
		Limit							

Origins Laboratory, Inc.

Y309379-04 (Soil)

pH in Soil by 9045D

pH	7.92	pH Units	1	B312301	ACN	09/23/2023	09/24/2023
----	------	----------	---	---------	-----	------------	------------

Origins Laboratory, Inc.



The results in this report apply to the samples analyzed in accordance with the chain of custody document. This analytical report must be reproduced in its entirety.

Eagle Environmental Consulting, LLC
8000 W 44th Ave
Wheat Ridge CO 80033

Martin C Eckert III
Project Number: 425777561
Project: Noble - Dinner #6-34

HA-SS-02@0.5-1'

9/18/2023 2:05:00PM

Analyte	Result	Reporting	Units	Dilution	Batch	Analyst	Prepared	Analyzed	Notes
		Limit							

Origins Laboratory, Inc.
Y309379-05 (Soil)

pH in Soil by 9045D

pH	7.67	pH Units	1	B312301	ACN	09/23/2023	09/24/2023
----	------	----------	---	---------	-----	------------	------------

Origins Laboratory, Inc.



The results in this report apply to the samples analyzed in accordance with the chain of custody document. This analytical report must be reproduced in its entirety.

Eagle Environmental Consulting, LLC
8000 W 44th Ave
Wheat Ridge CO 80033

Martin C Eckert III
Project Number: 425777561
Project: Noble - Dinner #6-34

HA-SS-03@0-0.5'

9/18/2023 2:15:00PM

Analyte	Result	Reporting Limit	Units	Dilution	Batch	Analyst	Prepared	Analyzed	Notes
---------	--------	--------------------	-------	----------	-------	---------	----------	----------	-------

Origins Laboratory, Inc.
Y309379-06 (Soil)

pH in Soil by 9045D

pH	7.40	pH Units	1	B312301	ACN	09/23/2023	09/24/2023
----	------	----------	---	---------	-----	------------	------------

Origins Laboratory, Inc.



The results in this report apply to the samples analyzed in accordance with the chain of custody document. This analytical report must be reproduced in its entirety.

Eagle Environmental Consulting, LLC
8000 W 44th Ave
Wheat Ridge CO 80033

Martin C Eckert III
Project Number: 425777561
Project: Noble - Dinner #6-34

HA-SS-03@0.5-1'

9/18/2023 2:20:00PM

Analyte	Result	Reporting	Units	Dilution	Batch	Analyst	Prepared	Analyzed	Notes
		Limit							

Origins Laboratory, Inc.
Y309379-07 (Soil)

pH in Soil by 9045D

pH	7.28	pH Units	1	B312301	ACN	09/23/2023	09/24/2023
----	------	----------	---	---------	-----	------------	------------

Origins Laboratory, Inc.



The results in this report apply to the samples analyzed in accordance with the chain of custody document. This analytical report must be reproduced in its entirety.

Eagle Environmental Consulting, LLC
8000 W 44th Ave
Wheat Ridge CO 80033

Martin C Eckert III
Project Number: 425777561
Project: Noble - Dinner #6-34

HA-SS-04@0-0.5'

9/18/2023 2:30:00PM

Analyte	Result	Reporting	Units	Dilution	Batch	Analyst	Prepared	Analyzed	Notes
		Limit							

Origins Laboratory, Inc.
Y309379-08 (Soil)

pH in Soil by 9045D

pH	7.75	pH Units	1	B312301	ACN	09/23/2023	09/24/2023
----	------	----------	---	---------	-----	------------	------------

Origins Laboratory, Inc.



The results in this report apply to the samples analyzed in accordance with the chain of custody document. This analytical report must be reproduced in its entirety.

Eagle Environmental Consulting, LLC
8000 W 44th Ave
Wheat Ridge CO 80033

Martin C Eckert III
Project Number: 425777561
Project: Noble - Dinner #6-34

HA-SS-04@0.5-1'

9/18/2023 2:35:00PM

Analyte	Result	Reporting	Units	Dilution	Batch	Analyst	Prepared	Analyzed	Notes
		Limit							

Origins Laboratory, Inc.
Y309379-09 (Soil)

pH in Soil by 9045D

pH	7.79	pH Units	1	B312301	ACN	09/23/2023	09/24/2023
----	------	----------	---	---------	-----	------------	------------

Origins Laboratory, Inc.



The results in this report apply to the samples analyzed in accordance with the chain of custody document. This analytical report must be reproduced in its entirety.

Eagle Environmental Consulting, LLC
8000 W 44th Ave
Wheat Ridge CO 80033

Martin C Eckert III
Project Number: 425777561
Project: Noble - Dinner #6-34

HA-SS-05@0-0.5'

9/18/2023 2:40:00PM

Analyte	Result	Reporting	Units	Dilution	Batch	Analyst	Prepared	Analyzed	Notes
		Limit							

Origins Laboratory, Inc.
Y309379-10 (Soil)

pH in Soil by 9045D

pH	7.46	pH Units	1	B312301	ACN	09/23/2023	09/24/2023
----	------	----------	---	---------	-----	------------	------------

Origins Laboratory, Inc.



The results in this report apply to the samples analyzed in accordance with the chain of custody document. This analytical report must be reproduced in its entirety.

Eagle Environmental Consulting, LLC
8000 W 44th Ave
Wheat Ridge CO 80033

Martin C Eckert III
Project Number: 425777561
Project: Noble - Dinner #6-34

HA-SS-05@0.5-1'

9/18/2023 2:45:00PM

Analyte	Result	Reporting	Units	Dilution	Batch	Analyst	Prepared	Analyzed	Notes
		Limit							

Origins Laboratory, Inc.
Y309379-11 (Soil)

pH in Soil by 9045D

pH	7.33	pH Units	1	B312301	ACN	09/23/2023	09/24/2023
----	------	----------	---	---------	-----	------------	------------

Origins Laboratory, Inc.



The results in this report apply to the samples analyzed in accordance with the chain of custody document. This analytical report must be reproduced in its entirety.

Eagle Environmental Consulting, LLC
8000 W 44th Ave
Wheat Ridge CO 80033

Martin C Eckert III
Project Number: 425777561
Project: Noble - Dinner #6-34

HA-SS-06@0-0.5'

9/18/2023 3:15:00PM

Analyte	Result	Reporting	Units	Dilution	Batch	Analyst	Prepared	Analyzed	Notes
		Limit							

Origins Laboratory, Inc.
Y309379-12 (Soil)

pH in Soil by 9045D

pH	7.24	pH Units	1	B312301	ACN	09/23/2023	09/24/2023
----	------	----------	---	---------	-----	------------	------------

Origins Laboratory, Inc.



The results in this report apply to the samples analyzed in accordance with the chain of custody document. This analytical report must be reproduced in its entirety.

Eagle Environmental Consulting, LLC
8000 W 44th Ave
Wheat Ridge CO 80033

Martin C Eckert III
Project Number: 425777561
Project: Noble - Dinner #6-34

HA-SS-06@0.5-1'

9/18/2023 3:20:00PM

Analyte	Result	Reporting	Units	Dilution	Batch	Analyst	Prepared	Analyzed	Notes
		Limit							

Origins Laboratory, Inc.
Y309379-13 (Soil)

pH in Soil by 9045D

pH	7.23	pH Units	1	B312301	ACN	09/23/2023	09/24/2023
----	------	----------	---	---------	-----	------------	------------

Origins Laboratory, Inc.



The results in this report apply to the samples analyzed in accordance with the chain of custody document. This analytical report must be reproduced in its entirety.

Eagle Environmental Consulting, LLC
8000 W 44th Ave
Wheat Ridge CO 80033

Martin C Eckert III
Project Number: 425777561
Project: Noble - Dinner #6-34

HA-SS-07@0-0.5'

9/18/2023 3:25:00PM

Analyte	Result	Reporting	Units	Dilution	Batch	Analyst	Prepared	Analyzed	Notes
		Limit							

Origins Laboratory, Inc.
Y309379-14 (Soil)

pH in Soil by 9045D

pH	6.82	pH Units	1	B312301	ACN	09/23/2023	09/24/2023
----	------	----------	---	---------	-----	------------	------------

Origins Laboratory, Inc.



The results in this report apply to the samples analyzed in accordance with the chain of custody document. This analytical report must be reproduced in its entirety.

Eagle Environmental Consulting, LLC
8000 W 44th Ave
Wheat Ridge CO 80033

Martin C Eckert III
Project Number: 425777561
Project: Noble - Dinner #6-34

HA-SS-07@0.5-1'

9/18/2023 3:30:00PM

Analyte	Result	Reporting	Units	Dilution	Batch	Analyst	Prepared	Analyzed	Notes
		Limit							

Origins Laboratory, Inc.
Y309379-15 (Soil)

pH in Soil by 9045D

pH	6.72	pH Units	1	B312301	ACN	09/23/2023	09/24/2023
----	------	----------	---	---------	-----	------------	------------

Origins Laboratory, Inc.



The results in this report apply to the samples analyzed in accordance with the chain of custody document. This analytical report must be reproduced in its entirety.

Eagle Environmental Consulting, LLC
8000 W 44th Ave
Wheat Ridge CO 80033

Martin C Eckert III
Project Number: 425777561
Project: Noble - Dinner #6-34

HA-SS-08@0-0.5'

9/18/2023 3:45:00PM

Analyte	Result	Reporting	Units	Dilution	Batch	Analyst	Prepared	Analyzed	Notes
		Limit							

Origins Laboratory, Inc.
Y309379-16 (Soil)

pH in Soil by 9045D

pH	7.73	pH Units	1	B312301	ACN	09/23/2023	09/24/2023
----	------	----------	---	---------	-----	------------	------------

Origins Laboratory, Inc.



The results in this report apply to the samples analyzed in accordance with the chain of custody document. This analytical report must be reproduced in its entirety.

Eagle Environmental Consulting, LLC
8000 W 44th Ave
Wheat Ridge CO 80033

Martin C Eckert III
Project Number: 425777561
Project: Noble - Dinner #6-34

HA-SS-08@0.5-1'

9/18/2023 3:50:00PM

Analyte	Result	Reporting	Units	Dilution	Batch	Analyst	Prepared	Analyzed	Notes
		Limit							

Origins Laboratory, Inc.
Y309379-17 (Soil)

pH in Soil by 9045D

pH	7.38	pH Units	1	B312301	ACN	09/23/2023	09/24/2023
----	------	----------	---	---------	-----	------------	------------

Origins Laboratory, Inc.



The results in this report apply to the samples analyzed in accordance with the chain of custody document. This analytical report must be reproduced in its entirety.

Eagle Environmental Consulting, LLC
8000 W 44th Ave
Wheat Ridge CO 80033

Martin C Eckert III
Project Number: 425777561
Project: Noble - Dinner #6-34

HA-SS-09@0-0.5'

9/18/2023 3:55:00PM

Analyte	Result	Reporting	Units	Dilution	Batch	Analyst	Prepared	Analyzed	Notes
		Limit							

Origins Laboratory, Inc.
Y309379-18 (Soil)

pH in Soil by 9045D

pH	7.80	pH Units	1	B312301	ACN	09/23/2023	09/24/2023
----	------	----------	---	---------	-----	------------	------------

Origins Laboratory, Inc.



The results in this report apply to the samples analyzed in accordance with the chain of custody document. This analytical report must be reproduced in its entirety.

Eagle Environmental Consulting, LLC
8000 W 44th Ave
Wheat Ridge CO 80033

Martin C Eckert III
Project Number: 425777561
Project: Noble - Dinner #6-34

HA-SS-09@0.5-1'

9/18/2023 4:00:00PM

Analyte	Result	Reporting	Units	Dilution	Batch	Analyst	Prepared	Analyzed	Notes
		Limit							

Origins Laboratory, Inc.
Y309379-19 (Soil)

pH in Soil by 9045D

pH	7.61	pH Units	1	B312301	ACN	09/23/2023	09/24/2023
----	------	----------	---	---------	-----	------------	------------

Origins Laboratory, Inc.



The results in this report apply to the samples analyzed in accordance with the chain of custody document. This analytical report must be reproduced in its entirety.

Eagle Environmental Consulting, LLC
8000 W 44th Ave
Wheat Ridge CO 80033

Martin C Eckert III
Project Number: 425777561
Project: Noble - Dinner #6-34

Saturated Paste - Quality Control
Origins Laboratory, Inc.

Analyte	Result	Reporting Limit	Units	Spike Level	Source Result	%REC	%REC Limits	RPD	RPD Limit	Notes
---------	--------	-----------------	-------	-------------	---------------	------	-------------	-----	-----------	-------

Batch B3I2301 - Saturated Paste pH/EC

Duplicate (B3I2301-DUP1)

Source: Y309379-19

Prepared: 09/23/2023 Analyzed: 09/24/2023

pH	7.47		pH Units	7.61				1.86	25	
----	------	--	----------	------	--	--	--	------	----	--

Origins Laboratory, Inc.



The results in this report apply to the samples analyzed in accordance with the chain of custody document. This analytical report must be reproduced in its entirety.

Jen Pellegrini For Noelle Doyle Mathis, President

Eagle Environmental Consulting, LLC

8000 W 44th Ave

Wheat Ridge CO 80033

Martin C Eckert III

Project Number: 425777561

Project: Noble - Dinner #6-34

Notes and Definitions

ND Analyte NOT DETECTED at or above the reporting limit

RPD Relative Percent Difference

All soil results are reported at a wet weight basis.

Origins Laboratory, Inc.



The results in this report apply to the samples analyzed in accordance with the chain of custody document. This analytical report must be reproduced in its entirety.



September 27, 2023

Eagle Environmental Consulting, LLC

Martin C Eckert III

8000 W 44th Ave

Wheat Ridge CO 80033

Project Name - Noble - Dinner #6-34

Project Number - 425777561

Attached are your analytical results for Noble - Dinner #6-34 received by Origins Laboratory, Inc. September 18, 2023. This project is associated with Origins project number Y309380-01.

The analytical results in the following report were analyzed under the guidelines of EPA Methods. These methods are identified as follows; "SW" are defined in SW-846, "EPA" are defined in 40CFR part 136 and "SM" are defined in the most current revision of Standard Methods For the Examination of Water and Wastewater.

The analytical results apply specifically to the samples and analyses specified per the attached Chain of Custody. As such, this report shall not be reproduced except in full, without the written approval of Origin's laboratory.

Unless otherwise noted, the analytical results for all soil samples are reported on a wet weight basis. All analytical analyses were performed under NELAP guidelines unless noted by a data qualifier.

Any holding time exceedances, deviations from the method specifications or deviations from Origins Laboratory's Standard Operating Procedures are outlined in the case narrative.

Thank you for selecting Origins for your analytical needs. Please contact us with any questions concerning this report, or if we can help with anything at all.

Origins Laboratory, Inc.
303.433.1322
o-squad@oelabinc.com



1725 Elk Place, Denver, CO 80211 | Phone: 303.433.1322 | Fax: 303.265.9645

Eagle Environmental Consulting, LLC
8000 W 44th Ave
Wheat Ridge CO 80033

Martin C Eckert III
Project Number: 425777561
Project: Noble - Dinner #6-34

CROSS REFERENCE REPORT

Sample ID	Laboratory ID	Matrix	Date Sampled	Date Received
Background-02@0-0.5'	Y309380-01	Soil	September 18, 2023 11:35	09/18/2023 17:57
Background-02@0.5-1'	Y309380-02	Soil	September 18, 2023 11:40	09/18/2023 17:57
Background-02@1-2'	Y309380-03	Soil	September 18, 2023 11:45	09/18/2023 17:57
Background-03@0-0.5'	Y309380-04	Soil	September 18, 2023 11:50	09/18/2023 17:57
Background-03@0.5-1'	Y309380-05	Soil	September 18, 2023 11:55	09/18/2023 17:57
Background-03@1-2'	Y309380-06	Soil	September 18, 2023 12:00	09/18/2023 17:57
Background-04@0-0.5'	Y309380-07	Soil	September 18, 2023 12:05	09/18/2023 17:57
Background-04@0.5-1'	Y309380-08	Soil	September 18, 2023 12:10	09/18/2023 17:57
Background-04@1-2'	Y309380-09	Soil	September 18, 2023 12:15	09/18/2023 17:57
Background-05@0-0.5'	Y309380-10	Soil	September 18, 2023 12:20	09/18/2023 17:57
Background-05@0.5-1'	Y309380-11	Soil	September 18, 2023 12:25	09/18/2023 17:57
Background-05@1-2'	Y309380-12	Soil	September 18, 2023 12:30	09/18/2023 17:57
Background-06@0-0.5'	Y309380-13	Soil	September 18, 2023 12:35	09/18/2023 17:57
Background-06@0.5-1'	Y309380-14	Soil	September 18, 2023 12:40	09/18/2023 17:57

Origins Laboratory, Inc.



The results in this report apply to the samples analyzed in accordance with the chain of custody document. This analytical report must be reproduced in its entirety.

Eagle Environmental Consulting, LLC

8000 W 44th Ave

Wheat Ridge CO 80033

Martin C Eckert III

Project Number: 425777561

Project: Noble - Dinner #6-34

CROSS REFERENCE REPORT

Sample ID	Laboratory ID	Matrix	Date Sampled	Date Received
Background-06@1-2'	Y309380-15	Soil	September 18, 2023 12:45	09/18/2023 17:57

Origins Laboratory, Inc.



The results in this report apply to the samples analyzed in accordance with the chain of custody document. This analytical report must be reproduced in its entirety.

Jen Pellegrini For Noelle Doyle Mathis, President

Eagle Environmental Consulting, LLC
8000 W 44th Ave
Wheat Ridge CO 80033

Martin C Eckert III
Project Number: 425777561
Project: Noble - Dinner #6-34

www.originslaboratory.com

4309380 page 1 of 2

ORIGINS
LABORATORY, INC

Client: Eagle Environmental Consulting
Address: 8000 W. 44th Ave.
Wheat Ridge, CO 80033
Telephone Number: 303-433-0479
Email Address: mce3@eagle-enviro.com

Project Manager: Martin Eckert III
Project Name: Dinner 6-34
Project Number: —
Samples Collected By: BU

Sample ID Description	Date Sampled	Time Sampled	# of Containers	Preservative				Matrix			Analysis	Sample Instructions
				Unpreserved	HCl	HNO ₃	Other	Groundwater	Soil	Air Summ #		
Background - 02E0-0.5'	9-18-23	1135	2	X				X				pH completed by
Background - 02E0.5-1'		1140										soaked paste
Background - 02E1-2'		1145										prep.
Background - 03E0-0.5'		1150										
Background - 03E0.5-1'		1155										
Background - 03E1-2'		1200										
Background - 04E0-0.5'		1205										
Background - 04E0.5-1'		1210										
Background - 04E1-2'		1215										
Background - 05E0-0.5'		1220										
Relinquished By: Noble Ulrich	Date: 9-18-23	Time: 1757		Received By: [Signature]	Date: 9-18-23	Time: 1757		Received By: [Signature]	Date: 9-18-23	Time: 1757		Turnaround Time: Same Day <input type="checkbox"/> 24 Hr <input type="checkbox"/> 48 Hr <input type="checkbox"/> 72 Hr <input checked="" type="checkbox"/> Standard

Date Results Needed: Noble

Temp Received: 3

Bill to Dan

Origins Laboratory, Inc.

Jefe Pellegrini

The results in this report apply to the samples analyzed in accordance with the chain of custody document. This analytical report must be reproduced in its entirety.

Eagle Environmental Consulting, LLC
8000 W 44th Ave
Wheat Ridge CO 80033

Martin C Eckert III
Project Number: 425777561
Project: Noble - Dinner #6-34

Origins Laboratory

F-012207-01-R1
Effective Date: 01/09/12

Sample Receipt Checklist

Origins Work Order: 4309380

Client: Eagle

Client Project ID: Dinner 6-34

Checklist Completed by: EHS

Shipped Via: HP
(UPS, FedEx, Hand Delivered, Pick-up, etc.)

Date/time completed: 9/19/23

Airbill #: N/A

Matrix(s) Received: (Check all that apply): ☒ Soil/Solid

☐ Water ☐ Other: _____

Cooler Number/Temperature: 113 °C 1 °C 1 °C (Describe)

Thermometer ID: 1004

Requirement Description	Yes	No	N/A	Comments (if any)
If samples require cooling, was the temperature between 0°C to ≤ 6°C ⁽¹⁾ ?	<input checked="" type="checkbox"/>	<input type="checkbox"/>	<input type="checkbox"/>	
Is there ice present (document if blue ice is used)	<input checked="" type="checkbox"/>	<input type="checkbox"/>	<input type="checkbox"/>	
Are custody seals present on cooler? (if so, document in comments if they are signed and dated, broken or intact)	<input type="checkbox"/>	<input checked="" type="checkbox"/>	<input type="checkbox"/>	
Are custody seals present on each sample container? (if so, document in comments if they are signed and dated, broken or intact)	<input type="checkbox"/>	<input checked="" type="checkbox"/>	<input type="checkbox"/>	
Were all samples received intact ⁽¹⁾ ?	<input checked="" type="checkbox"/>	<input type="checkbox"/>	<input type="checkbox"/>	
Was adequate sample volume provided ⁽¹⁾ ?	<input checked="" type="checkbox"/>	<input type="checkbox"/>	<input type="checkbox"/>	
Are short holding time analytes or samples with HTs due within 48 hours present ⁽¹⁾ ?	<input type="checkbox"/>	<input checked="" type="checkbox"/>	<input type="checkbox"/>	
Is a chain-of-custody (COC) present and filled out completely ⁽¹⁾ ?	<input checked="" type="checkbox"/>	<input type="checkbox"/>	<input type="checkbox"/>	
Does the COC agree with the number and type of sample bottles received ⁽¹⁾ ?	<input checked="" type="checkbox"/>	<input type="checkbox"/>	<input type="checkbox"/>	
Do the sample IDs on the bottle labels match the COC ⁽¹⁾ ?	<input checked="" type="checkbox"/>	<input type="checkbox"/>	<input type="checkbox"/>	
Is the COC properly relinquished by the client with date and time recorded ⁽¹⁾ ?	<input checked="" type="checkbox"/>	<input type="checkbox"/>	<input type="checkbox"/>	
For volatiles in water – is there headspace (> ¼ inch bubble) present? If yes, contact client and note in narrative.	<input type="checkbox"/>	<input type="checkbox"/>	<input checked="" type="checkbox"/>	
Are samples preserved that require preservation and was it checked ⁽¹⁾ ? (note ID of confirmation instrument used in comments) / (preservation is not confirmed for subcontracted analyses in order to insure sample integrity)/(pH <2 for samples preserved with HNO ₃ , HCL, H ₂ SO ₄) / (pH >10 for samples preserved with NaAsO ₂ +NaOH, ZnAc+NaOH)	<input type="checkbox"/>	<input type="checkbox"/>	<input checked="" type="checkbox"/>	
Additional Comments (if any):				

⁽¹⁾ If NO, then contact the client before proceeding with analysis and note date/time and person contacted as well as the corrective action to in the additional comments (above) and the case narrative.

Reviewed by (Project Manager)

Date/Time Reviewed 9/19/23

Origins Laboratory, Inc.

Jefe Pellegrini

The results in this report apply to the samples analyzed in accordance with the chain of custody document. This analytical report must be reproduced in its entirety.

Eagle Environmental Consulting, LLC
8000 W 44th Ave
Wheat Ridge CO 80033

Martin C Eckert III
Project Number: 425777561
Project: Noble - Dinner #6-34

Background-02@0-0.5'

9/18/2023 11:35:00AM

Analyte	Result	Reporting	Units	Dilution	Batch	Analyst	Prepared	Analyzed	Notes
		Limit							

Origins Laboratory, Inc.
Y309380-01 (Soil)

pH in Soil by 9045D

pH	7.80	pH Units	1	B312301	ACN	09/23/2023	09/24/2023
----	------	----------	---	---------	-----	------------	------------

Origins Laboratory, Inc.



The results in this report apply to the samples analyzed in accordance with the chain of custody document. This analytical report must be reproduced in its entirety.

Eagle Environmental Consulting, LLC
8000 W 44th Ave
Wheat Ridge CO 80033

Martin C Eckert III
Project Number: 425777561
Project: Noble - Dinner #6-34

Background-02@0.5-1'

9/18/2023 11:40:00AM

Analyte	Result	Reporting	Units	Dilution	Batch	Analyst	Prepared	Analyzed	Notes
		Limit							

Origins Laboratory, Inc.
Y309380-02 (Soil)

pH in Soil by 9045D

pH	7.60	pH Units	1	B312302	ACN	09/23/2023	09/24/2023
----	------	----------	---	---------	-----	------------	------------

Origins Laboratory, Inc.



The results in this report apply to the samples analyzed in accordance with the chain of custody document. This analytical report must be reproduced in its entirety.

Eagle Environmental Consulting, LLC
8000 W 44th Ave
Wheat Ridge CO 80033

Martin C Eckert III
Project Number: 425777561
Project: Noble - Dinner #6-34

Background-02@1-2'
9/18/2023 11:45:00AM

Analyte	Result	Reporting Limit	Units	Dilution	Batch	Analyst	Prepared	Analyzed	Notes
---------	--------	--------------------	-------	----------	-------	---------	----------	----------	-------

Origins Laboratory, Inc.
Y309380-03 (Soil)

pH in Soil by 9045D

pH	7.67	pH Units	1	B312302	ACN	09/23/2023	09/24/2023
----	------	----------	---	---------	-----	------------	------------

Origins Laboratory, Inc.



The results in this report apply to the samples analyzed in accordance with the chain of custody document. This analytical report must be reproduced in its entirety.

Eagle Environmental Consulting, LLC
8000 W 44th Ave
Wheat Ridge CO 80033

Martin C Eckert III
Project Number: 425777561
Project: Noble - Dinner #6-34

Background-03@0-0.5'

9/18/2023 11:50:00AM

Analyte	Result	Reporting	Units	Dilution	Batch	Analyst	Prepared	Analyzed	Notes
		Limit							

Origins Laboratory, Inc.
Y309380-04 (Soil)

pH in Soil by 9045D

pH	7.78	pH Units	1	B312302	ACN	09/23/2023	09/24/2023
----	------	----------	---	---------	-----	------------	------------

Origins Laboratory, Inc.



The results in this report apply to the samples analyzed in accordance with the chain of custody document. This analytical report must be reproduced in its entirety.

Eagle Environmental Consulting, LLC
8000 W 44th Ave
Wheat Ridge CO 80033

Martin C Eckert III
Project Number: 425777561
Project: Noble - Dinner #6-34

Background-03@0.5-1'

9/18/2023 11:55:00AM

Analyte	Result	Reporting	Units	Dilution	Batch	Analyst	Prepared	Analyzed	Notes
		Limit							

Origins Laboratory, Inc.
Y309380-05 (Soil)

pH in Soil by 9045D

pH	7.74	pH Units	1	B312302	ACN	09/23/2023	09/24/2023
----	------	----------	---	---------	-----	------------	------------

Origins Laboratory, Inc.



The results in this report apply to the samples analyzed in accordance with the chain of custody document. This analytical report must be reproduced in its entirety.

Eagle Environmental Consulting, LLC
8000 W 44th Ave
Wheat Ridge CO 80033

Martin C Eckert III
Project Number: 425777561
Project: Noble - Dinner #6-34

Background-03@1-2'
9/18/2023 12:00:00PM

Analyte	Result	Reporting Limit	Units	Dilution	Batch	Analyst	Prepared	Analyzed	Notes
---------	--------	--------------------	-------	----------	-------	---------	----------	----------	-------

Origins Laboratory, Inc.
Y309380-06 (Soil)

pH in Soil by 9045D

pH	7.75	pH Units	1	B312302	ACN	09/23/2023	09/24/2023
----	------	----------	---	---------	-----	------------	------------

Origins Laboratory, Inc.



The results in this report apply to the samples analyzed in accordance with the chain of custody document. This analytical report must be reproduced in its entirety.

Eagle Environmental Consulting, LLC
8000 W 44th Ave
Wheat Ridge CO 80033

Martin C Eckert III
Project Number: 425777561
Project: Noble - Dinner #6-34

Background-04@0-0.5'

9/18/2023 12:05:00PM

Analyte	Result	Reporting	Units	Dilution	Batch	Analyst	Prepared	Analyzed	Notes
		Limit							

Origins Laboratory, Inc.
Y309380-07 (Soil)

pH in Soil by 9045D

pH	7.82	pH Units	1	B312302	ACN	09/23/2023	09/24/2023
----	------	----------	---	---------	-----	------------	------------

Origins Laboratory, Inc.



The results in this report apply to the samples analyzed in accordance with the chain of custody document. This analytical report must be reproduced in its entirety.

Eagle Environmental Consulting, LLC
8000 W 44th Ave
Wheat Ridge CO 80033

Martin C Eckert III
Project Number: 425777561
Project: Noble - Dinner #6-34

Background-04@0.5-1'

9/18/2023 12:10:00PM

Analyte	Result	Reporting	Units	Dilution	Batch	Analyst	Prepared	Analyzed	Notes
		Limit							

Origins Laboratory, Inc.
Y309380-08 (Soil)

pH in Soil by 9045D

pH	7.75	pH Units	1	B312302	ACN	09/23/2023	09/24/2023
----	------	----------	---	---------	-----	------------	------------

Origins Laboratory, Inc.



The results in this report apply to the samples analyzed in accordance with the chain of custody document. This analytical report must be reproduced in its entirety.

Eagle Environmental Consulting, LLC
8000 W 44th Ave
Wheat Ridge CO 80033

Martin C Eckert III
Project Number: 425777561
Project: Noble - Dinner #6-34

Background-04@1-2'
9/18/2023 12:15:00PM

Analyte	Result	Reporting	Units	Dilution	Batch	Analyst	Prepared	Analyzed	Notes
		Limit							

Origins Laboratory, Inc.
Y309380-09 (Soil)

pH in Soil by 9045D

pH	7.86	pH Units	1	B312302	ACN	09/23/2023	09/24/2023
----	------	----------	---	---------	-----	------------	------------

Origins Laboratory, Inc.



The results in this report apply to the samples analyzed in accordance with the chain of custody document. This analytical report must be reproduced in its entirety.

Eagle Environmental Consulting, LLC
8000 W 44th Ave
Wheat Ridge CO 80033

Martin C Eckert III
Project Number: 425777561
Project: Noble - Dinner #6-34

Background-05@0-0.5'

9/18/2023 12:20:00PM

Analyte	Result	Reporting	Units	Dilution	Batch	Analyst	Prepared	Analyzed	Notes
		Limit							

Origins Laboratory, Inc.
Y309380-10 (Soil)

pH in Soil by 9045D

pH	6.97	pH Units	1	B312302	ACN	09/23/2023	09/24/2023
----	------	----------	---	---------	-----	------------	------------

Origins Laboratory, Inc.



The results in this report apply to the samples analyzed in accordance with the chain of custody document. This analytical report must be reproduced in its entirety.

Eagle Environmental Consulting, LLC
8000 W 44th Ave
Wheat Ridge CO 80033

Martin C Eckert III
Project Number: 425777561
Project: Noble - Dinner #6-34

Background-05@0.5-1'

9/18/2023 12:25:00PM

Analyte	Result	Reporting	Units	Dilution	Batch	Analyst	Prepared	Analyzed	Notes
		Limit							

Origins Laboratory, Inc.
Y309380-11 (Soil)

pH in Soil by 9045D

pH	7.41	pH Units	1	B312302	ACN	09/23/2023	09/24/2023
----	------	----------	---	---------	-----	------------	------------

Origins Laboratory, Inc.



The results in this report apply to the samples analyzed in accordance with the chain of custody document. This analytical report must be reproduced in its entirety.

Eagle Environmental Consulting, LLC
8000 W 44th Ave
Wheat Ridge CO 80033

Martin C Eckert III
Project Number: 425777561
Project: Noble - Dinner #6-34

Background-05@1-2'
9/18/2023 12:30:00PM

Analyte	Result	Reporting	Units	Dilution	Batch	Analyst	Prepared	Analyzed	Notes
		Limit							

Origins Laboratory, Inc.
Y309380-12 (Soil)

pH in Soil by 9045D

pH	7.64	pH Units	1	B312302	ACN	09/23/2023	09/24/2023
----	------	----------	---	---------	-----	------------	------------

Origins Laboratory, Inc.



The results in this report apply to the samples analyzed in accordance with the chain of custody document. This analytical report must be reproduced in its entirety.

Eagle Environmental Consulting, LLC
8000 W 44th Ave
Wheat Ridge CO 80033

Martin C Eckert III
Project Number: 425777561
Project: Noble - Dinner #6-34

Background-06@0-0.5'

9/18/2023 12:35:00PM

Analyte	Result	Reporting	Units	Dilution	Batch	Analyst	Prepared	Analyzed	Notes
		Limit							

Origins Laboratory, Inc.
Y309380-13 (Soil)

pH in Soil by 9045D

pH	6.59	pH Units	1	B312302	ACN	09/23/2023	09/24/2023
----	------	----------	---	---------	-----	------------	------------

Origins Laboratory, Inc.



The results in this report apply to the samples analyzed in accordance with the chain of custody document. This analytical report must be reproduced in its entirety.

Eagle Environmental Consulting, LLC
8000 W 44th Ave
Wheat Ridge CO 80033

Martin C Eckert III
Project Number: 425777561
Project: Noble - Dinner #6-34

Background-06@0.5-1'

9/18/2023 12:40:00PM

Analyte	Result	Reporting	Units	Dilution	Batch	Analyst	Prepared	Analyzed	Notes
		Limit							

Origins Laboratory, Inc.
Y309380-14 (Soil)

pH in Soil by 9045D

pH	7.24	pH Units	1	B312302	ACN	09/23/2023	09/24/2023
----	------	----------	---	---------	-----	------------	------------

Origins Laboratory, Inc.



The results in this report apply to the samples analyzed in accordance with the chain of custody document. This analytical report must be reproduced in its entirety.

Eagle Environmental Consulting, LLC
8000 W 44th Ave
Wheat Ridge CO 80033

Martin C Eckert III
Project Number: 425777561
Project: Noble - Dinner #6-34

Background-06@1-2'
9/18/2023 12:45:00PM

Analyte	Result	Reporting	Units	Dilution	Batch	Analyst	Prepared	Analyzed	Notes
		Limit							

Origins Laboratory, Inc.
Y309380-15 (Soil)

pH in Soil by 9045D

pH	7.64	pH Units	1	B312302	ACN	09/23/2023	09/24/2023
----	------	----------	---	---------	-----	------------	------------

Origins Laboratory, Inc.



The results in this report apply to the samples analyzed in accordance with the chain of custody document. This analytical report must be reproduced in its entirety.

Eagle Environmental Consulting, LLC
8000 W 44th Ave
Wheat Ridge CO 80033

Martin C Eckert III
Project Number: 425777561
Project: Noble - Dinner #6-34

Saturated Paste - Quality Control Origins Laboratory, Inc.

Analyte	Result	Reporting Limit	Units	Spike Level	Source Result	%REC	%REC Limits	RPD	RPD Limit	Notes
Batch B3I2301 - Saturated Paste pH/EC										
Duplicate (B3I2301-DUP1)		Source: Y309379-19			Prepared: 09/23/2023 Analyzed: 09/24/2023					
pH	7.47		pH Units		7.61			1.86	25	
Batch B3I2302 - Saturated Paste pH/EC										
Duplicate (B3I2302-DUP1)		Source: Y309380-02			Prepared: 09/23/2023 Analyzed: 09/24/2023					
pH	7.71		pH Units		7.60			1.44	25	

Origins Laboratory, Inc.



The results in this report apply to the samples analyzed in accordance with the chain of custody document. This analytical report must be reproduced in its entirety.

Eagle Environmental Consulting, LLC

8000 W 44th Ave

Wheat Ridge CO 80033

Martin C Eckert III

Project Number: 425777561

Project: Noble - Dinner #6-34

Notes and Definitions

ND Analyte NOT DETECTED at or above the reporting limit

RPD Relative Percent Difference

All soil results are reported at a wet weight basis.

Origins Laboratory, Inc.



The results in this report apply to the samples analyzed in accordance with the chain of custody document. This analytical report must be reproduced in its entirety.