

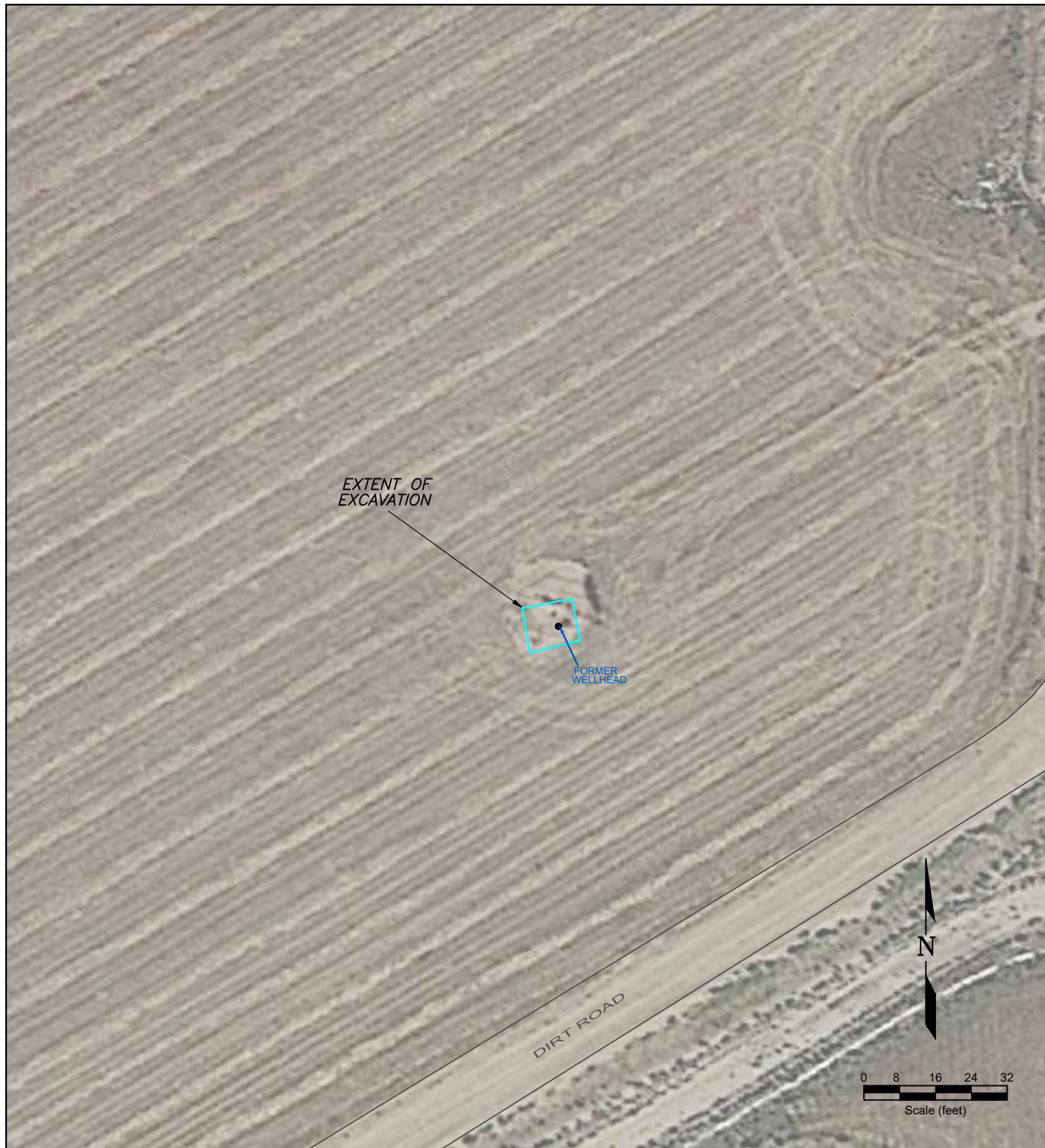
USGS 7.5 MINUTE SERIES (TOPOGRAPHIC)

Figure 1
SITE LOCATION MAP

NOBLE ENERGY INC - PATRIOT B16-24
 SESW Sec. 16, T5N, R64W, 6th PM
 Weld County, Colorado
 40.395440°, -104.555204°

Project # CO23-037	API # 05-123-25730	Facility #
Date 10/03/2023	Remediation # 25430	Filename 23037T





LEGEND

- WELLHEAD LOCATION
- ABOVE GROUND STORAGE TANK
- FORMER FORMER FACILITY
- FLOW LINE
- ||||| CONTAINMENT BERM
- FENCE LINE

**Figure 2
SITE MAP**

NOBLE ENERGY INC - PATRIOT B16-24
 SESW Sec. 16, T5N, R64W, 6th PM
 Weld County, Colorado
 40.395440°, -104.555204°

Project # CO23-037	API # 05-123-25730	Facility #
Date 10/03/2023	Remediation # 25430	Filename 23037Q



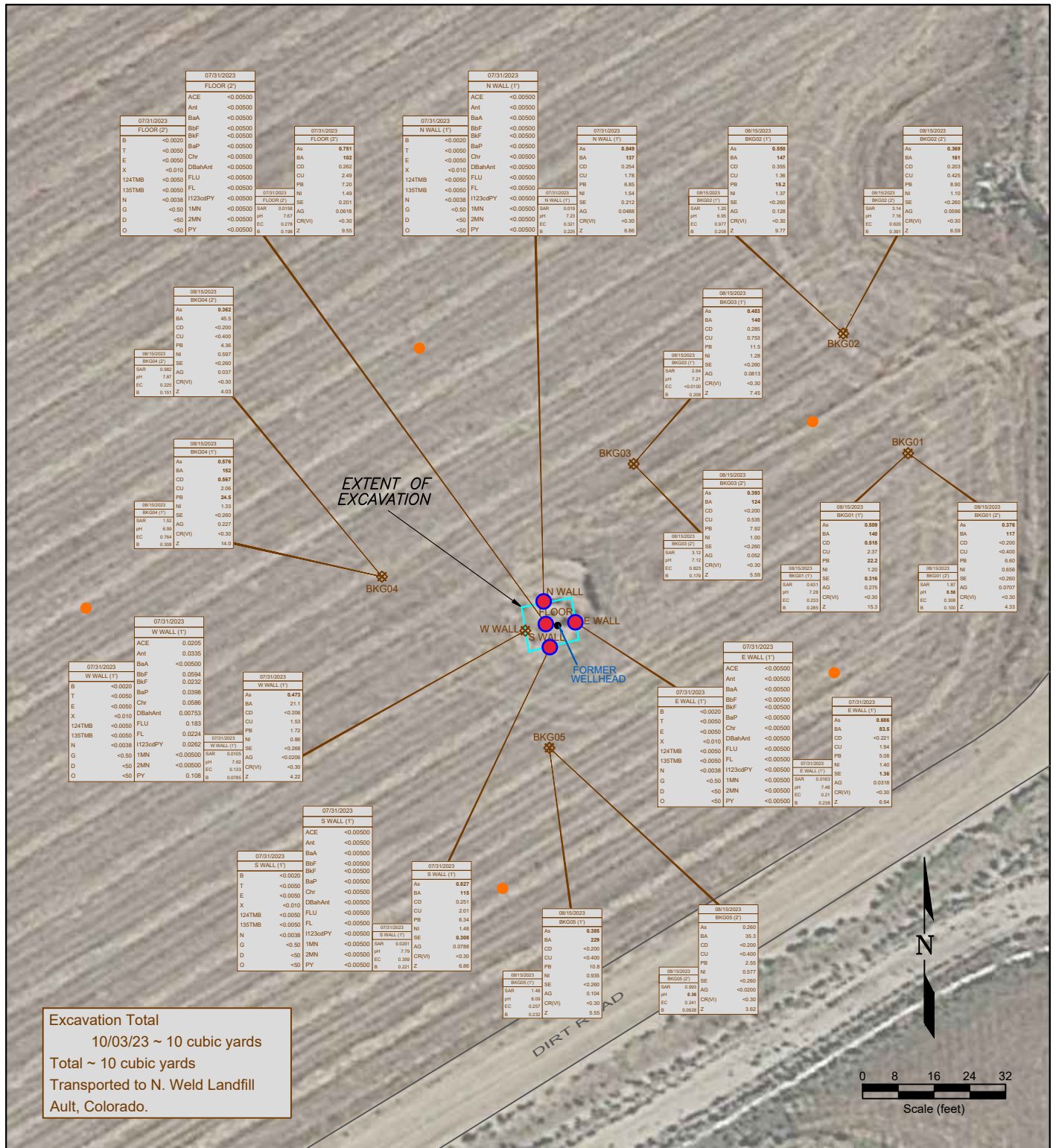


Figure 3
SOIL CHEMISTRY MAP

NOBLE ENERGY INC - PATRIOT B16-24
 SESW Sec. 16, T5N, R64W, 6th PM
 Weld County, Colorado
 40.395440°, -104.555204°

Project #	API #	Facility #
CO23-037	05-123-25730	
Date	Remediation #	Filename
10/03/2023	25430	23037Q



DATE SAMPLED	SAMPLE ID & DEPTH (ft)	DATE SAMPLED	SAMPLE ID & DEPTH (ft)	DATE SAMPLED	SAMPLE ID & DEPTH (ft)
07/31/2023	FLOOR (2")	07/31/2023	FLOOR (2")	07/31/2023	FLOOR (2")
ACE	<0.00500	ACE	<0.00500	ACE	<0.00500
Ant	<0.00500	Ant	<0.00500	Ant	<0.00500
BaA	<0.00500	BaA	<0.00500	BaA	<0.00500
BaP	<0.00500	BaP	<0.00500	BaP	<0.00500
Ch	<0.00500	Ch	<0.00500	Ch	<0.00500
DBahAnt	<0.00500	DBahAnt	<0.00500	DBahAnt	<0.00500
FLU	<0.00500	FLU	<0.00500	FLU	<0.00500
124TMB	<0.00500	124TMB	<0.00500	124TMB	<0.00500
135TMB	<0.00500	135TMB	<0.00500	135TMB	<0.00500
N	<0.0038	N	<0.0038	N	<0.0038
1MN	<0.00500	1MN	<0.00500	1MN	<0.00500
2MN	<0.00500	2MN	<0.00500	2MN	<0.00500
PY	<0.00500	PY	<0.00500	PY	<0.00500