

New Construction and Stormwater Inspection

September 10, 2024

Operator: FULCRUM ENERGY OPERATING # 10805

Location ID: 436642

Inspection Document #: 712300071

Jackson County, CO

Logan Maxwell
Reclamation Specialist, ECMC



COLORADO

**Energy & Carbon Management
Commission**

Department of Natural Resources

Inspection Photos

Location Name: Ray Ranch North 0880 S32 Pad

Location ID: 436642



Photo 1. Photo taken from the entrance of Location. Signage of Ray Ranch North is not on site. This Location shares access road with Janet 0780 S5 Pad. Photo illustrates the drilling is occurring at the Janet Pad.



Photo 2. Photo taken from the eastern edge of Location facing west. Photo illustrates construction grading without perimeter stormwater BMPs



Inspection Photos

Location Name: Ray Ranch North 0880 S32 Pad

Location ID: 436642



Photo 3. Photo taken from the entrance of Location facing Highway 14. Photo illustrates sediment track-out offsite. Sediment transport was not observed at longer distances away from entrance.



Photo 4. Photo taken from the entrance of Location facing Highway 14. Tracking pad not installed to prevent track of material off site. Discussion with Operator that street sweeper was employed to clean sediment tracked off-site.

Inspection Photos

Location Name: Ray Ranch North 0880 S32 Pad

Location ID: 436642



Photo 5. Photo taken from the northeastern edge of Location, facing southwest. Photo illustrates Location perimeter. No stormwater perimeter BMPs installed prior to construction, per Rule 1002.f.(2) .



Photo 6. Photo taken from the northwestern edge of Location, facing south. Photo illustrates Location perimeter. No stormwater perimeter BMPs installed at time of inspection.



COLORADO
Energy & Carbon Management
Commission
Department of Natural Resources

Inspection Number: 712300071

Inspection Photos

Location Name: Ray Ranch North 0880 S32 Pad

Location ID: 436642



Photo 7. Photo taken from the eastern edge of Location, facing north. Photo illustrates Location perimeter. No stormwater perimeter BMPs installed at time of inspection.



Photo 8. Photo taken from the eastern edge of Location, facing north. Photo illustrates an area not constructed at time of inspection. Based on Operator plans, this area may be part of disturbance. If so, salvage topsoil and install perimeter BMPs.



Inspection Photos

Location Name: Ray Ranch North 0880 S32 Pad

Location ID: 436642



Photo 9. Photo taken from western edge of Location, facing NE. Photo illustrates topsoil stockpile and temporary stabilization is in process.



Photo 10. Photo taken from southeastern edge of Location, facing SW. Photo illustrates topsoil stockpile.

Inspection Photos

Location Name: Ray Ranch North 0880 S32 Pad

Location ID: 436642



Photo 11. Photo taken from the eastern edge of Location. Photo illustrates topsoil stockpiling in process.



Photo 12. Photo taken from the western edge of Location. Photo illustrates topsoil observed on perimeter.



COLORADO
Energy & Carbon Management
Commission
Department of Natural Resources

Inspection Number: 712300071

Inspection Photos
Location Name: Ray Ranch North 0880 S32 Pad
Location ID: 436642

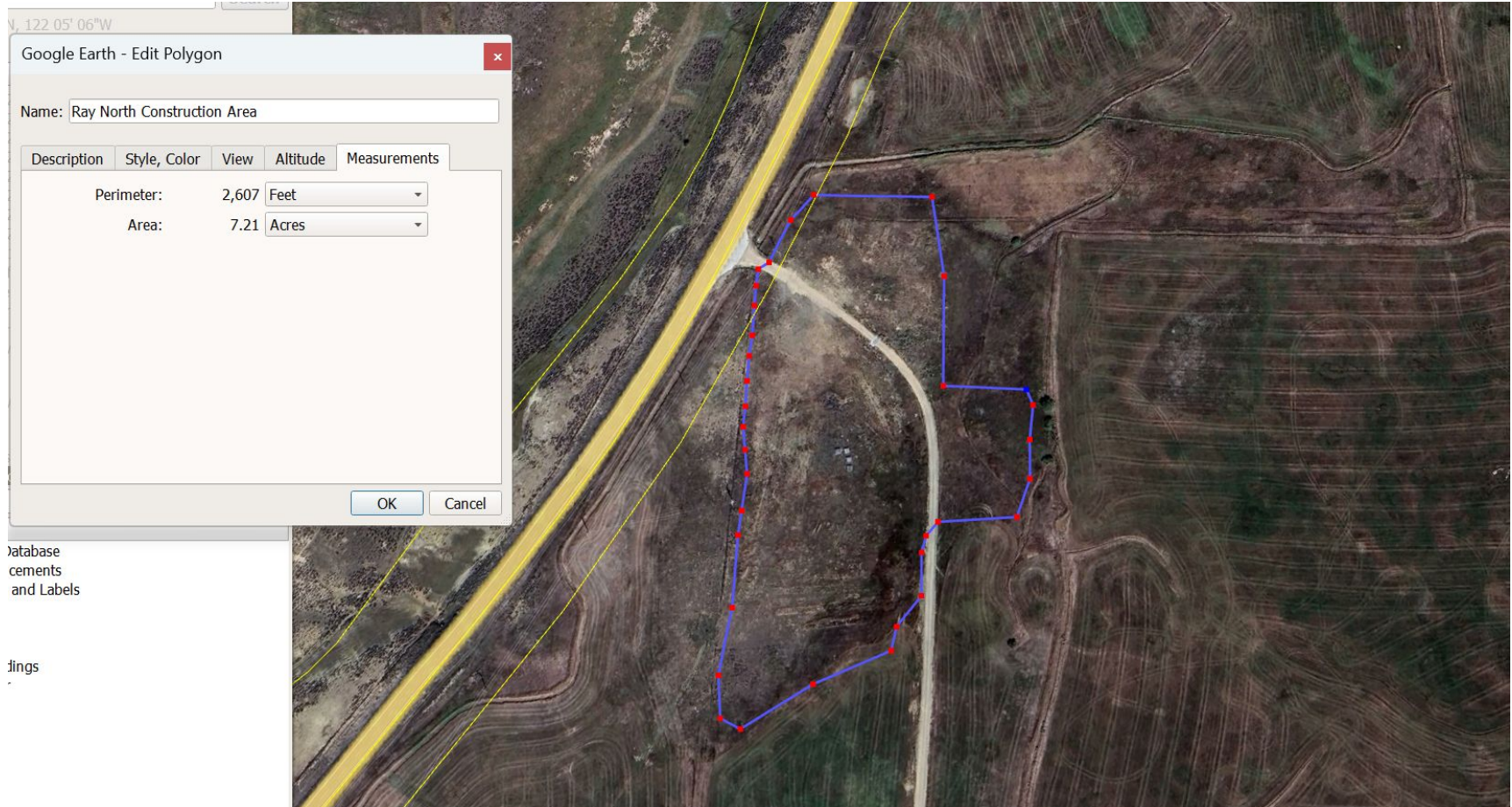


Photo 13. Satellite imagery and perimeter of Location during construction. The Location is approximately 7.2 acres. At the time of construction, not all areas had been excavated.