



00052533

LYNES, INC.

RECEIVED

Box 12486
Houston, TX 77017

SEP 8 1981

Contractor True Drlg. Co.
Rig No. 16
Spot --
Sec. 1 8
Twp. 1 N
Rng. 90 W
Field Wildcat
County Rio Blanco
State Colorado
Elevation --
Formation Weber

Top Choke 1/4"
Bottom Choke 9/16"
Size Hole 8 3/4"
Size Rat Hole --
Size & Wt. D. P. 4 1/2" 16.60
Size Wt. Pipe 4 1/2" 42#
I. D. of D. C. 2 1/4"
Length of D. C. 381
Total Depth 5428'
Interval Tested 5397-5428'
Type of Test Bottom Hole
Conventional

GOLO. OIL & GAS CONS. COMM.

Flow No. 1 15 Min.
Shut-in No. 1 45 Min.
Flow No. 2 60 Min.
Shut-in No. 2 120 Min.
Flow No. 3 -- Min.
Shut-in No. 3 -- Min.

Bottom
Hole Temp. 174°F
Mud Weight 8.6
Gravity --
Viscosity 64

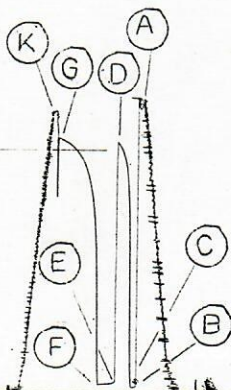
Tool opened @ 10:40 AM

Outside Recorder

PRD Make Kuster AK-1
No. 10237 Cap. 7900 @ 5419'

	Press	Corrected
Initial Hydrostatic	A	2436
Final Hydrostatic	K	2410
Initial Flow	B	54
Final Initial Flow	C	49
Initial Shut-in	D	2149
Second Initial Flow	E	90
Second Final Flow	F	76
Second Shut-in	G	2190
Third Initial Flow	H	--
Third Final Flow	I	--
Third Shut-in	J	--

Lynes Dist.: Rock Springs, Wy.
Our Tester: Stormy Hayes
Witnessed By:



Did Well Flow - Gas no Oil no Water no
RECOVERY IN PIPE: 184' Drilling mud = .90 bbl.

Top Sample R.W.: 4.2 @ 85°F = 1100 ppm. cl.
Middle Sample R.W.: 4.2 @ 80°F = 1150 ppm. cl.
Bottom Sample R.W.: 4.0 @ 75°F = 1300 ppm. cl.

Blow Description:

1st Flow: Tool opened with a weak blow, increased to 2" underwater blow in 2 minutes and remained thru flow period. After shut-in blow died in 7 minutes.

2nd Flow: Tool opened with a very weak blow, increased to 1/8" underwater blow in 5 minutes, decreased and died in 12 minutes and remained thru flow period.

DVR
FJP
HHM
JAM
JJD
RLB
CGM

Operator Northwest Exploration Co.
Address
See Distribution
Ticket No. 34967
Date 8-28-81
DST No. 2
No. Final Copies 10

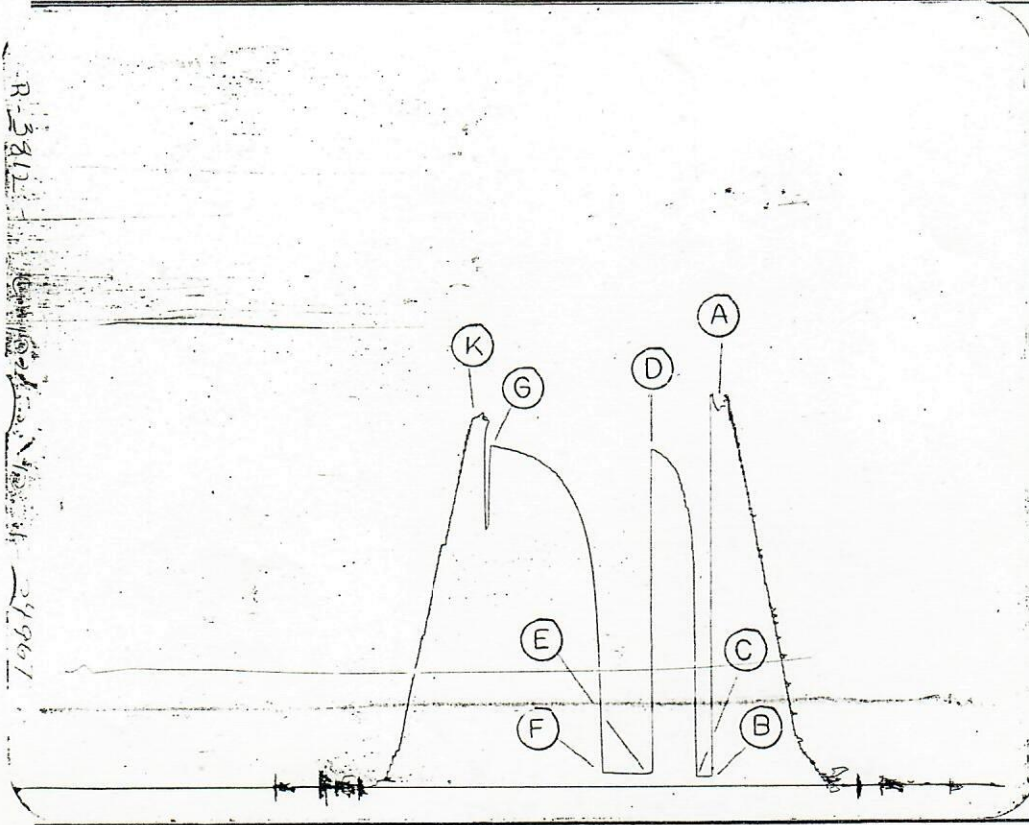


LYNES, INC.

Northwest Exploration Co.
Operator

Theos & Sons #1
Well Name and No.

2
DST No.



Inside Recorder Kuster AK-1

PRD Make	No. 3812	Cap. 5100	@ 5402'
Press	Corrected		
Initial Hydrostatic	A	2433	
Final Hydrostatic	K	2407	
Initial Flow	B	42	
Final Initial Flow	C	42	
Initial Shut-in	D	2146	
Second Initial Flow	E	75	
Second Final Flow	F	71	
Second Shut-in	G	2188	
Third Initial Flow	H	--	
Third Final Flow	I	--	
Third Shut-in	J	--	

Pressure Below Bottom
Packer Bled To

PRD Make	No.	Cap.	@
Press	Corrected		
Initial Hydrostatic	A		
Final Hydrostatic	K		
Initial Flow	B		
Final Initial Flow	C		
Initial Shut-in	D		
Second Initial Flow	E		
Second Final Flow	F		
Second Shut-in	G		
Third Initial Flow	H		
Third Final Flow	I		
Third Shut-in	J		

Pressure Below Bottom
Packer Bled To



LYNES, INC.

Sampler Report

Company Northwest Exploration Co. Date 8-28-81
Well Name & No. Theos & Sons #1 Ticket No. 34967
County Rio Blanco State Colorado
Test Interval 5397-5428' DST No. 2

Total Volume of Sampler: 2150 cc.

Total Volume of Sample: 2000 cc.

Pressure in Sampler: 32 psig

Oil: None cc.

Water: None cc.

Mud: 2000 cc.

Gas: None cu. ft.

Other: None

Sample R.W.: 4.2 @ 75°F = 1200 ppm. cl.

Resistivity

Make Up Water R.W.: 10.0 @ 65°F of Chloride Content 575 ppm.

Mud Pit Sample R.W.: 5.2 @ 92°F of Chloride Content 800 ppm.

Gas/Oil Ratio _____ Gravity _____ °API @ _____ °F

Where was sample drained on location

Remarks: _____
