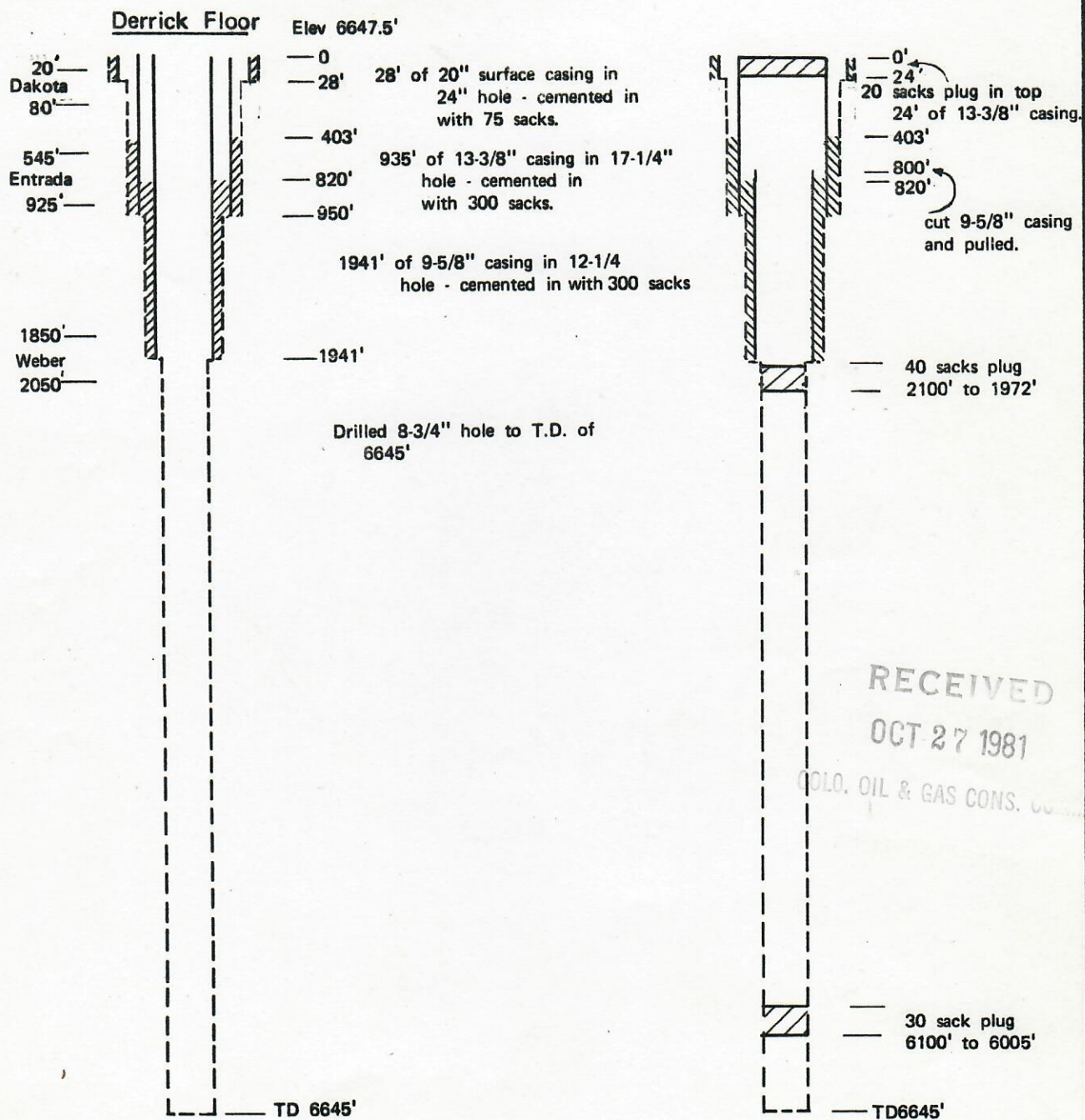


# PRIOR TO PLUGGING

AFTER PLUGGING  
10/29/1945



RECEIVED  
OCT 27 1981

COLO. OIL & GAS CONS. CO.

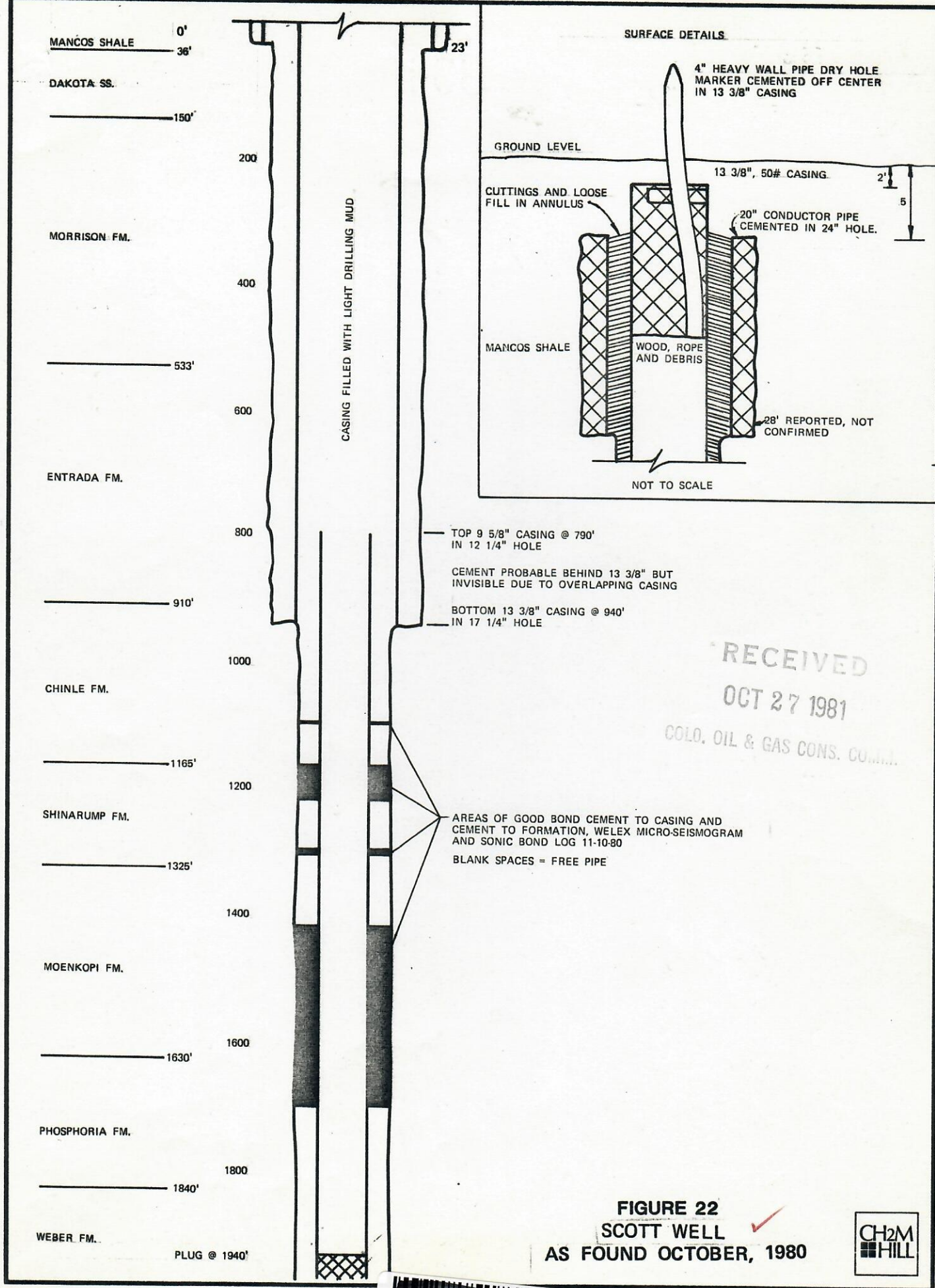
**FIGURE 21**  
**PLUGGING CONDITIONS**  
**STANOLIND OIL & GAS CO., SCOTT NO 1** ✓  
**SW1/4, SEC 20 - IN - 93W**



00038227







00038228

RECEIVED

OCT 27 1981

PRE DEC, 1980  
CONDITIONS

DURING DRILLING COLO. OIL & GAS CONS. COM. 1.

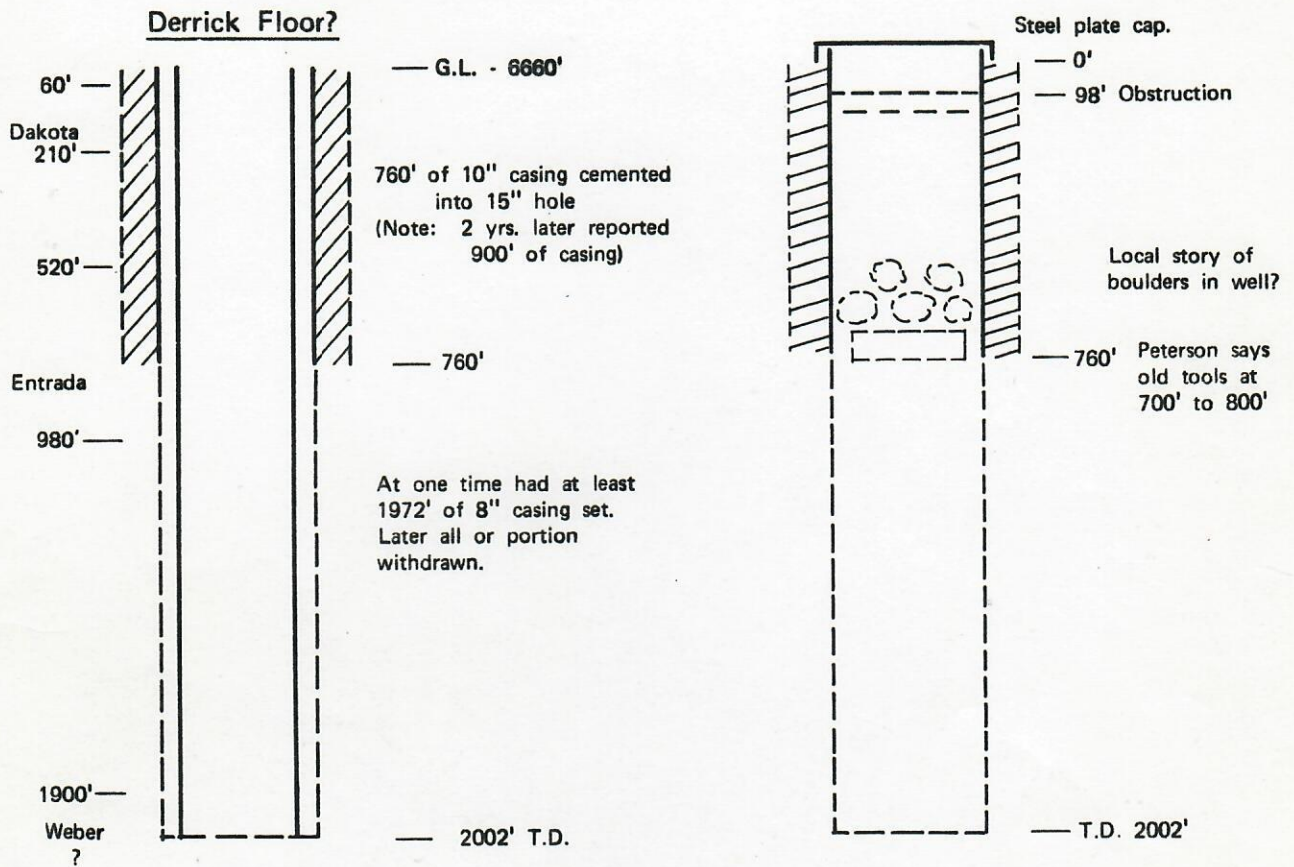


FIGURE 24

✓ **PLUGGING CONDITIONS**  
**MARLAND OIL CO., NO. 1 SCOTT**  
NE1/4 SW1/4 Sec 20, TIN, R93 W  
Drilling Commenced 7/29/1924  
Abandoned 6/13/1925





RECEIVED

OCT 27 1981

COLO. OIL & GAS CONS. COMM.

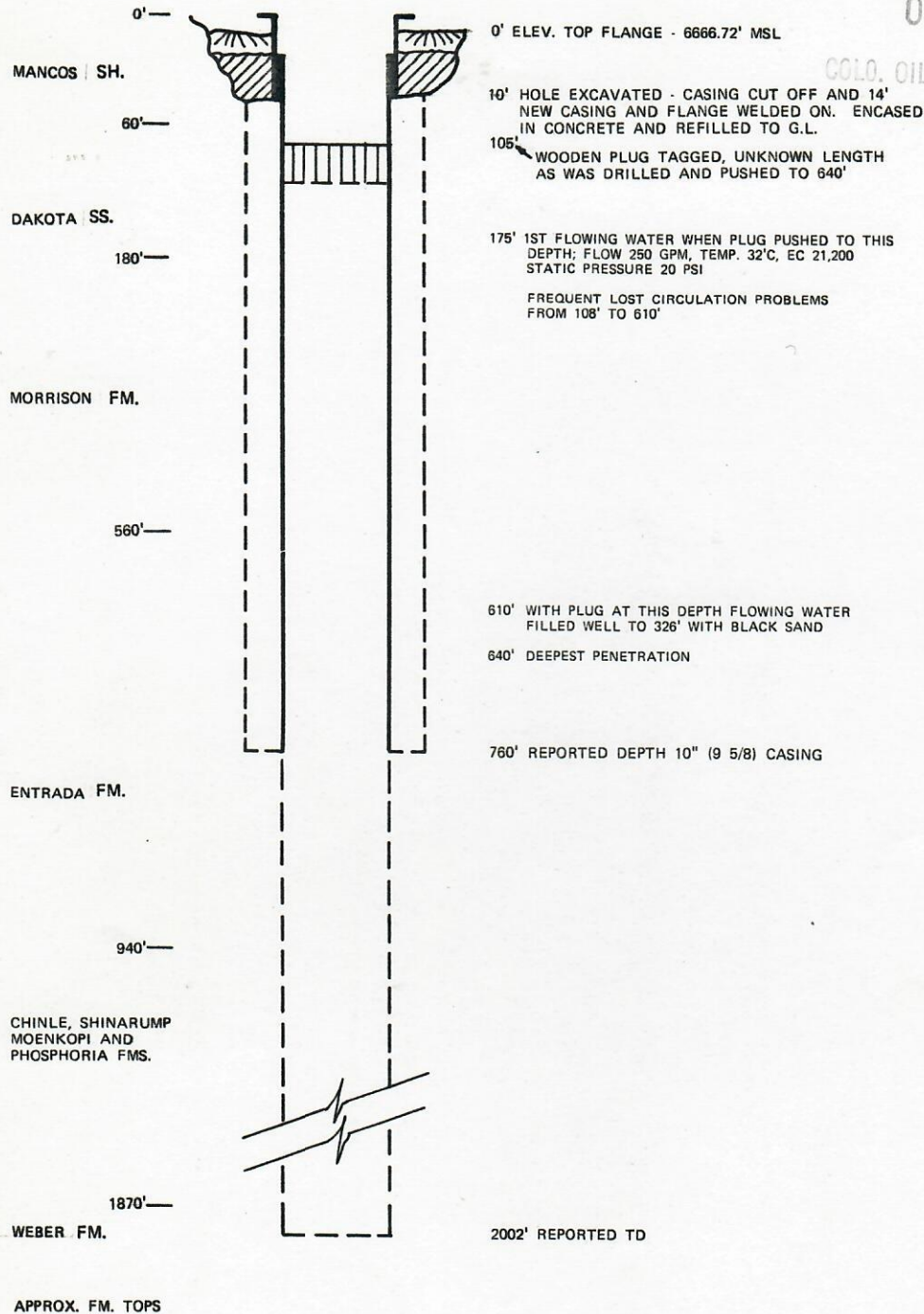
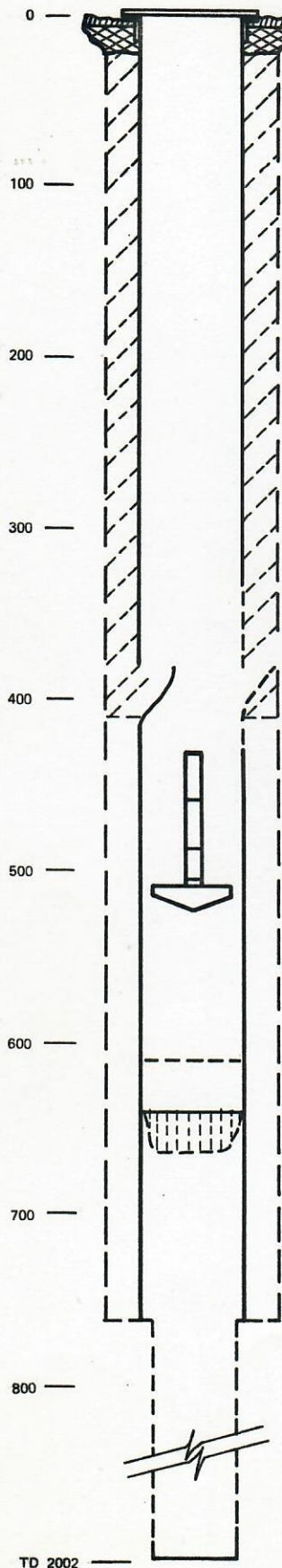


FIGURE 25  
CONDITIONS FOUND  
DECEMBER, 1980  
MARLAND WELL

20038243





WELL CAPPED 1/16/81  
1.5 gpm LEAK AROUND BOLTED DOWN CAP, TEMP. 22°C,  
EC 22,800.

RECEIVED

OCT 27 1981

OIL & GAS CONS. COMM.

- 105' 1ST CEMENTING JOB FROM 105' TO 40', 165 FT<sup>3</sup>, 12-14-80
- 110' FIRST HIT WOODEN PLUG - 12-14-80

- 270' 4TH CEMENTING JOB FROM 270' TO 36', 330 FT<sup>3</sup>, 12-27-80
- 280' 5TH CEMENTING JOB FROM 280' TO 110', 99 FT<sup>3</sup>, 12-29 - 12-30-80

- 325' STARTED HITTING STEEL; MILLED CASING TO 430', 12-29-80
- 326' 2ND CEMENTING JOB FROM 326' TO 40', 330 FT<sup>3</sup>, 12-18-80

- 1ST HIT STEEL @ 380', 12-29-80
- 380' ALL OR PORTION OF CASING SHIFTED ONE THIRD DIAMETER, 1-2-80

- 406' 3RD, CEMENTING JOB FROM 406' TO 198', 165 FT<sup>3</sup>, LOWEST CEMENTING, 12-22-80
- 430' MILLED TOP OF DRILL PIPE, 1-1-81

- 520' 8 1/2" x 35" CONE MILL, SUBS AND 90±' 2 7/8" DRILL PIPE STUCK, 12-21-80

- 610' INITIAL PENETRATION 12-17-80; HOLE FILLED BACK TO 326' OVERNIGHT BY SAND

- 640' WOODEN PLUG OF UNKNOWN LENGTH; DEEPEST PENETRATION, 12-21-80

- 760' REPORTED DEPTH 10" (9 5/8") CASING

NOTE: OVERLAPPING SEQUENCES, READ DATES CAREFULLY.

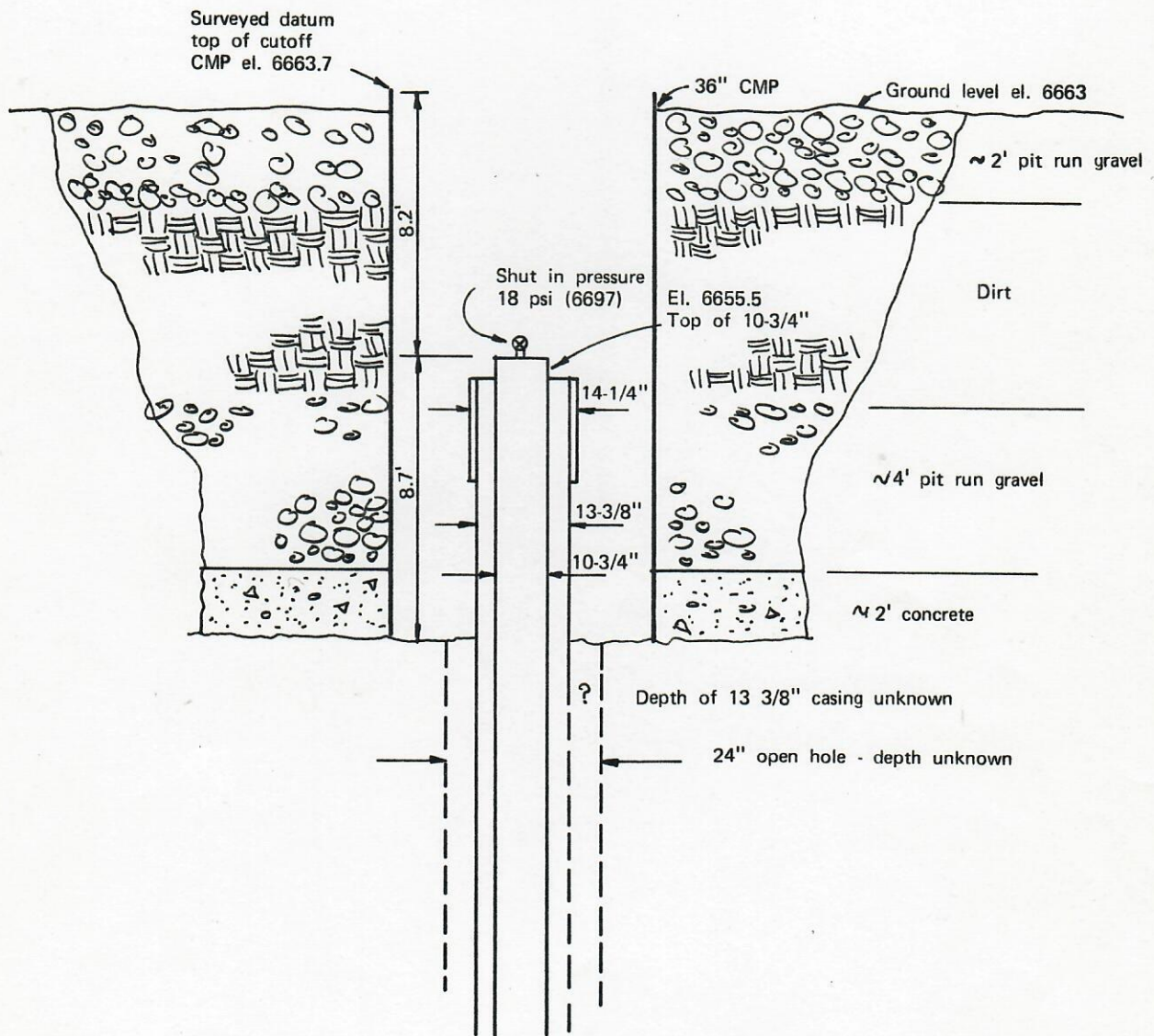
**FIGURE 26**  
**CONDITIONS, JANUARY, 1981 - APRIL, 1981**  
**MARLAND WELL**



RECEIVED

OCT 27 1981

COLORADO OIL & GAS CONS. COM. 1.



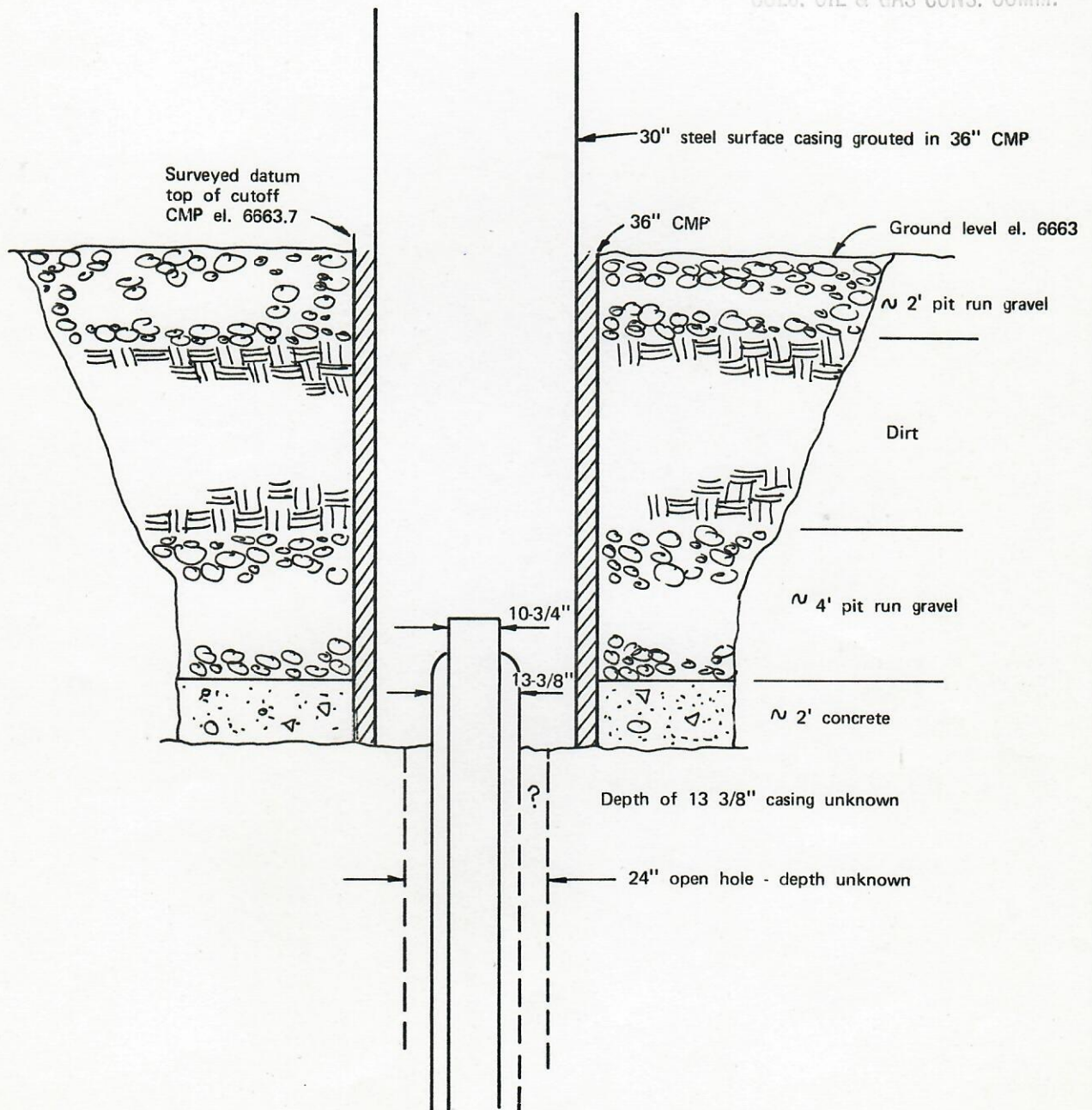
✓ **FIGURE 27**  
**MARLAND WELL SURFACE CASING**  
**AND CONDITIONS APRIL 15, 1981**



RECEIVED

OCT 27 1981

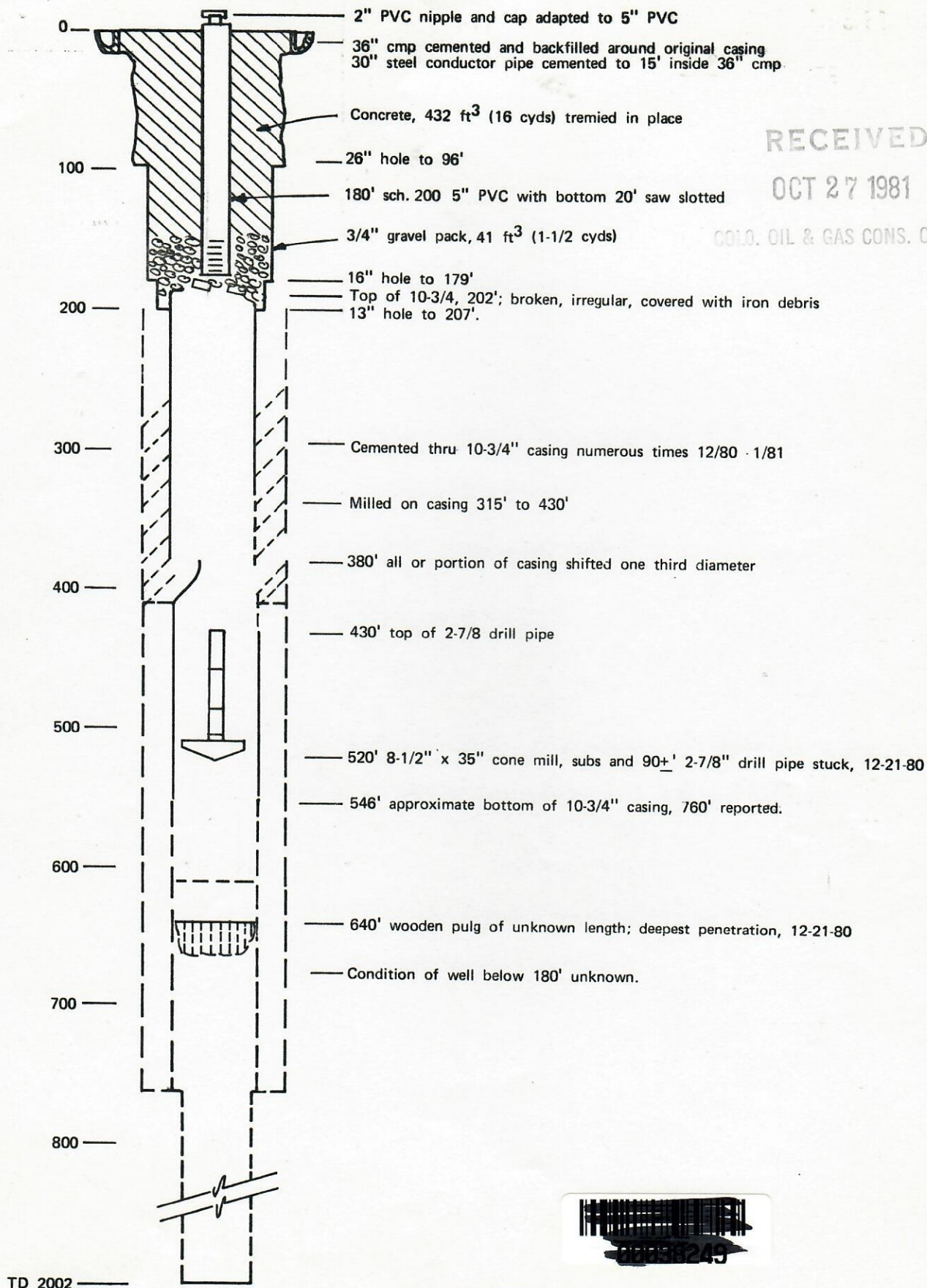
COLO. OIL & GAS CONS. COM. 1.



✓ **FIGURE 28**  
**MARLAND WELL SURFACE CASING**  
**AND CONDITIONS APRIL 22, 1981**







RECEIVED

OCT 27 1981

COLORADO OIL & GAS CONS. COM. 11.

FIGURE 29  
CURRENT CONDITIONS JUNE, 1981  
✓ MARLAND WELL





RECEIVED

OCT 27 1981

COLO. OIL & GAS CONS. COMM.

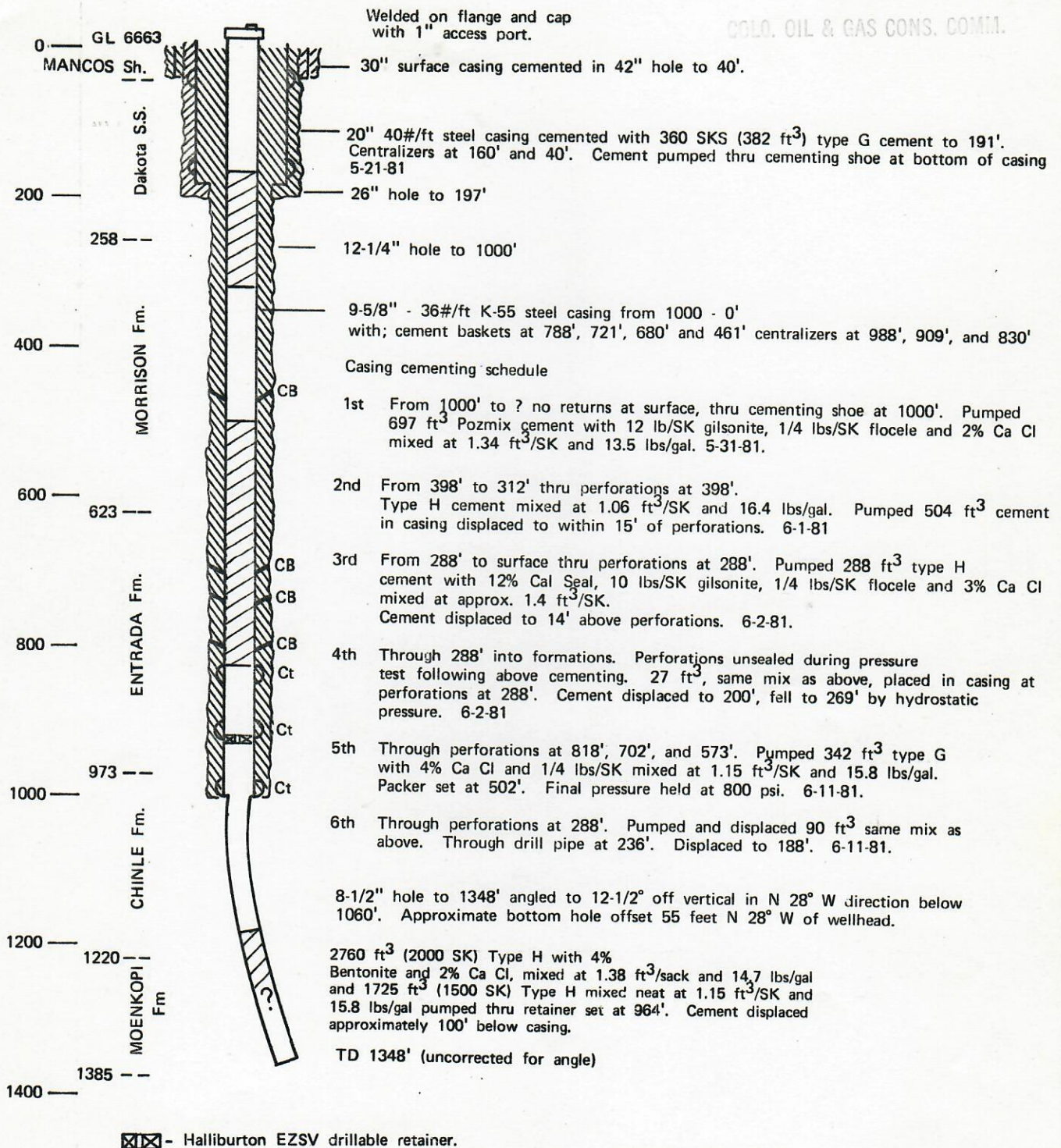


FIGURE 30

✓ MARLAND INTERCEPT WELL AS CONSTRUCTED MAY 14 - JUNE 11, 1981

