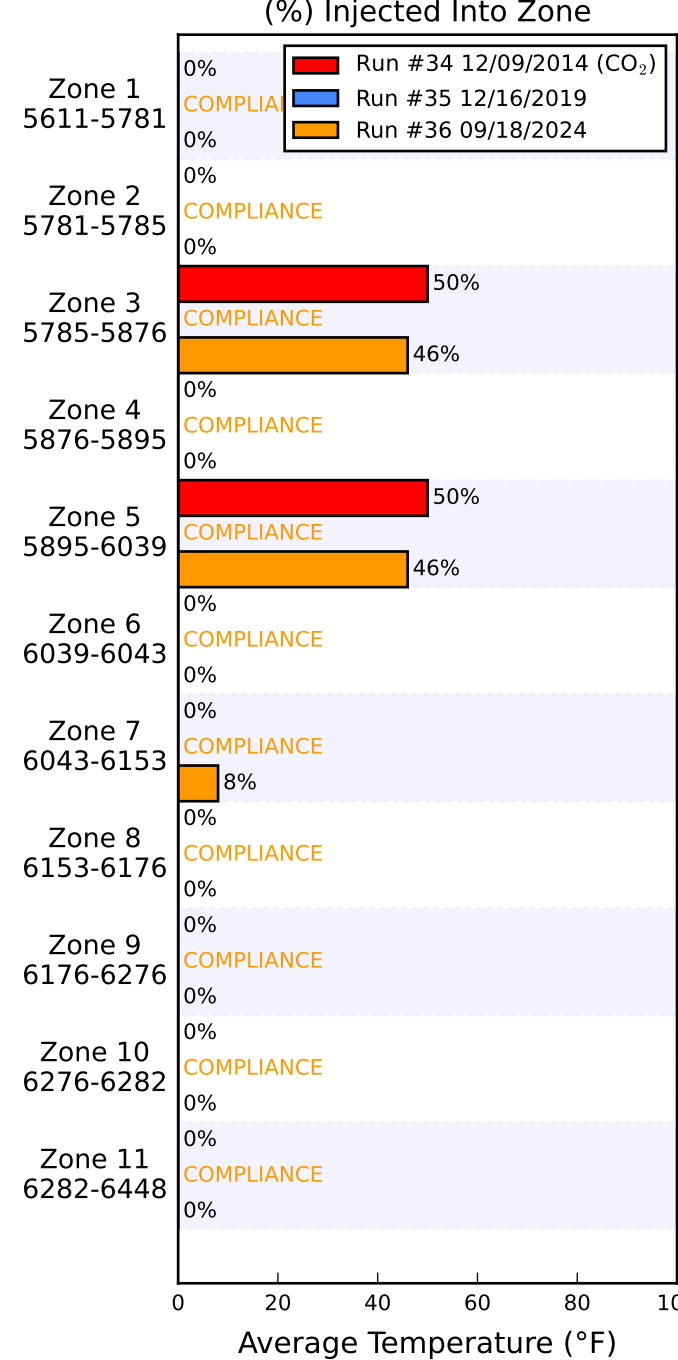
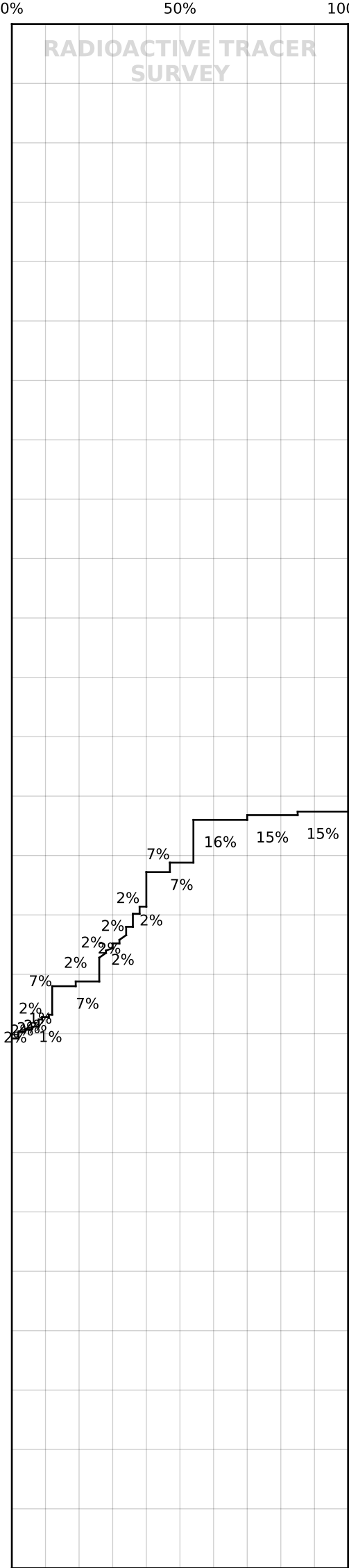
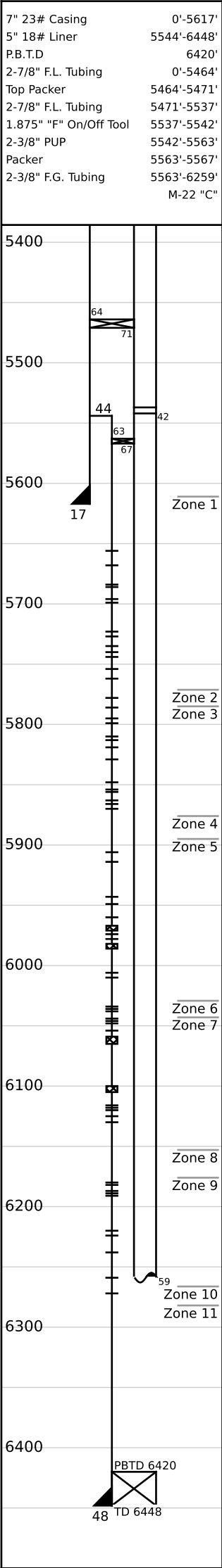




Well: U.P. 13-28
(4425)
Field: Rangley, Co.

Survey Data		Remarks
Run No.36		Ran 1.75" Gauge Ring to 6389' R/A Tracer indicates top perf and packer O.K.
Survey Type: T-S-T	Surface Temp: 99.8 °F	
Date: 09/18/2024	BHT: 156.1 °F	
Metered Rate: 710 B/D	TBG Pressure: 1750 PSI	
Measured Rate: 705 B/D	CSG Pressure: 0 PSI	
Desired Rate: N/A	Pick Up: 6394' PU	
Service Co: PLS	Inj. Fluid: H ₂ O	
		Recorded By: J.R. Hacking

Mechanical Information



	Run #34 12/09/2014	Run #35 12/16/2019	Run #36 09/18/2024
Surface	91.2	89.8	99.8
5611-5781	--	--	--
5781-5785	--	--	--
5785-5876	--	--	--
5876-5895	--	--	--
5895-6039	--	--	--
6039-6043	--	--	--
6043-6153	--	--	--
6153-6176	--	--	--
6176-6276	--	--	--
6276-6282	--	--	--
6282-6448	--	--	--
PU (6394)	127.3	104.0	156.1
Rate (B/D)	853	1347	705
Press (PSI)	2095	1630	1750