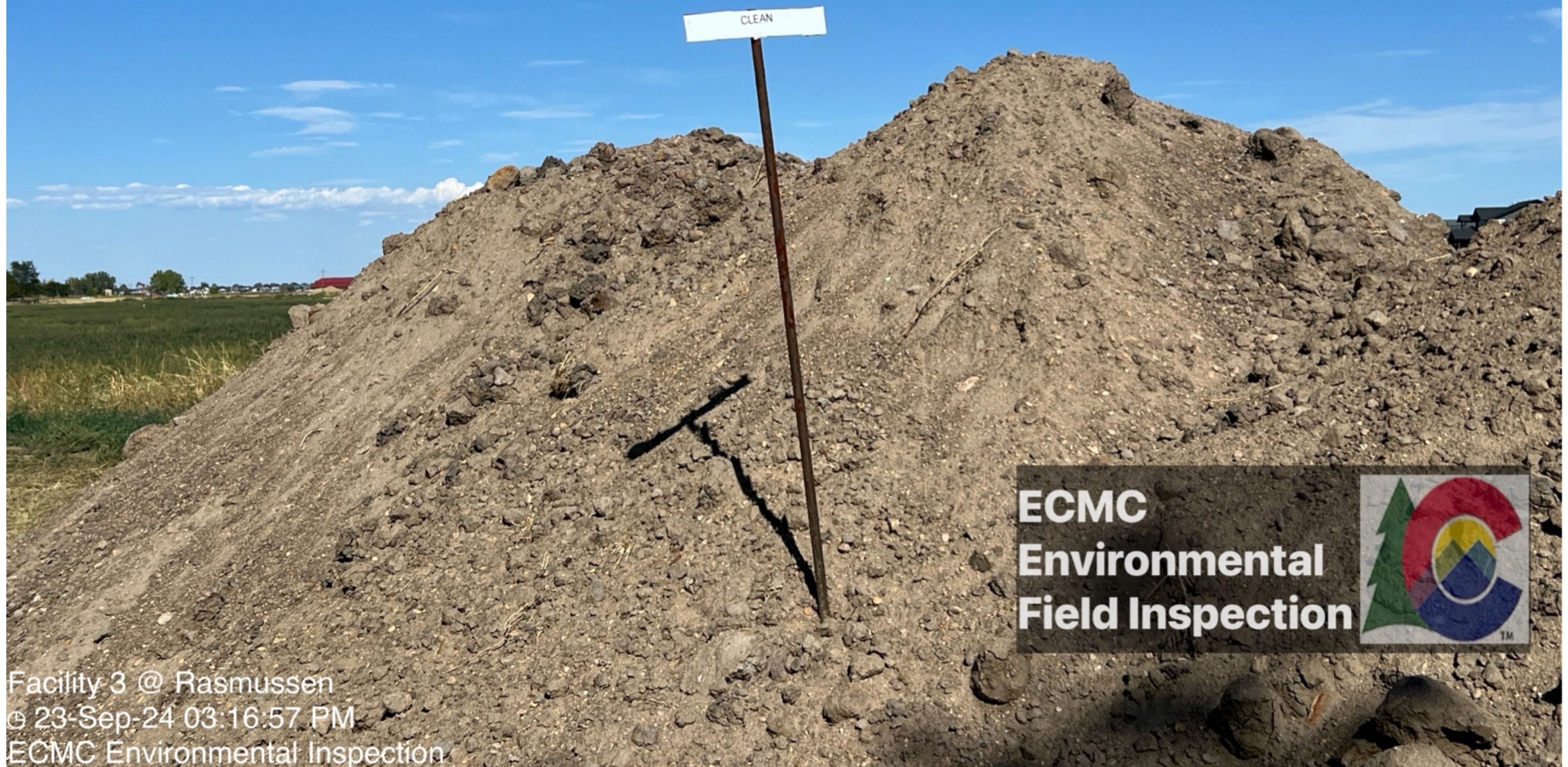




WGS84 40.11016, -105.02443  $\Delta$   $\frac{\text{ft}}{\pm 11\text{ft}}$  4929  $\frac{\circ}{\pm 13}$  NE56



ECMC  
Environmental  
Field Inspection



Facility 3 @ Rasmussen  
© 23-Sep-24 03:16:57 PM  
ECMC Environmental Inspection

WGS84 40 11032, -105.02444  $\Delta$   $\frac{\text{ft}}{\pm 11\text{ft}}$  4928  $\frac{\circ}{\pm 14}$  N349



ECMC  
Environmental  
Field Inspection



Facility 3 @ Rasmussen  
© 23-Sep-24 03:17:22 PM  
ECMC Environmental Inspection



