

Storm Water Management and Erosion control
Location Name: LARAMIE ENERGY LLC Hells Gulch Federal 26-7 Pad
Location ID: 334521



**Location Overview: Location is within High
Priority/Density/NSO/Black Bear Habitat areas.**
Section/Township/Range: 26 8S92W

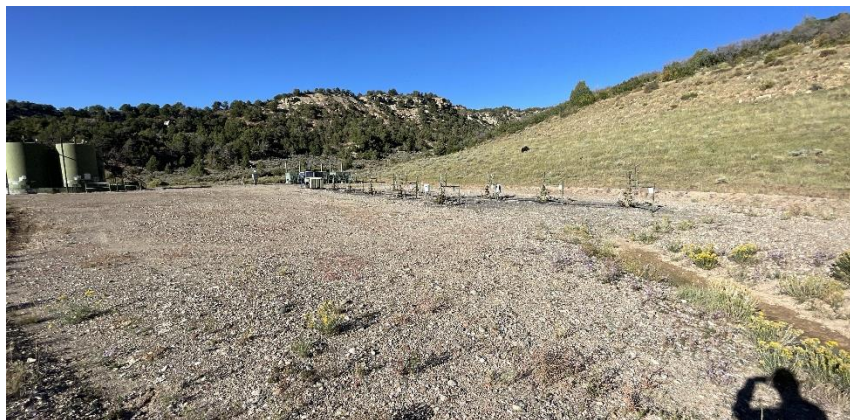
Storm water Management and Erosion control
Location Name: LARAMIE ENERGY LLC Hells Gulch Federal 26-7 Pad
Location ID: 334521



North West corner of location.



North East corner of location.



South West corner of location.



South East corner of location.

Storm water Management and Erosion control
Location Name: LARAMIE ENERGY LLC Hells Gulch Federal 26-7 Pad
Location ID: 334521



Photo # 1375 Failure to maintain chemical BMP/chemical tank containment full of fluid/BMP insufficient to contain possible spill



Photo # 1376 Failure to maintain chemical BMP/chemical tank containment full of fluid/BMP insufficient to contain possible spill (Fluid on the top of chemical tank containment is also a wildlife hazard)