

C LISCO #14-31

API # 001-08052

Loc. # 320104

FIELD NAME SONAR - #77635

Spud Date 2/5/1982

Basin DENVER - JULESBURG

Location NWNE 14 3S 64W 6

Elevation GL (ft) 5453

Elevation KB (ft) 5463

TD (ft) 8100

PBDT (ft) 8039

Formation Tops

DENVER - 131'

UPPER ARAPAHOE - 664'

LOWER ARAPAHOE - 917'

FOX HILLS TOP - 1419'

FOX HILLS BASE - 1687'

From offset Lisco 14-32 (001-07876)
Base of Upper Pierre - 2840'

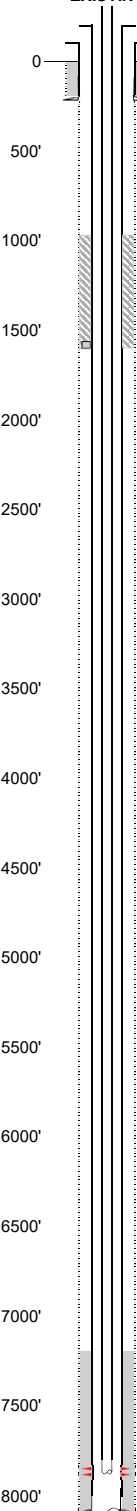
No SUSSEX Fm Production w/in 1 mi.

No SHANNON Fm Production w/in 1 mi.

NIOBRARA - 7251'
FORT HAYS - 7356'CARLILE - 7528'
GREENHORN - 7610'
BENTONITE - 7792'
D SAND - 7890'
J SAND - 7932'

Prepared DTA 9/16/2024

QC MSH 9/18/2024

EXISTING**Existing Casing and Cement Coverage**

SURF: Size: 8.625", Hole Size: 12.25 in.

Depth: 220 ft., Weight: 24

Cement: 175 sx, Top: 0 ft., Method: Vis

Deepest DWR w/in 1 mi. = 877'

UPPER ARAPAHOE - 664'

LOWER ARAPAHOE - 917'

DV Tool @ 1594', 1000 gal AnGel, CALC 979'-1594' (doc # 417583)

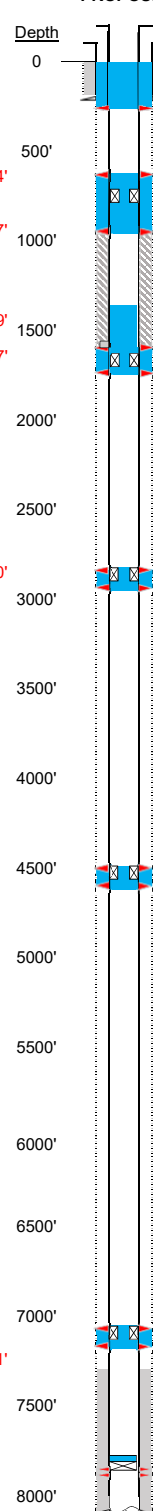
FOX HILLS TOP - 1419'

FOX HILLS BASE - 1687'

1ST, Size: 5.5", Hole Size: 7.875"
Depth: 8100 ft., Weight: 15.5, 17
Cement: 150 sx, TOC: 7236', Method: CALC

Base of Upper Pierre - 2840'

NIOBRARA - 7251'

2-3/8" tubing set at 7865'
TOC = 7236' (CALC by ECMC)
D Sand Perfs 7891' - 7898'
PBDT (ft) 8039'
TD (ft) 8100'**PROPOSED****Plug Placement**Perf at 270', pump 90
sx through perfs to
surface.Perf at 967' & 614'
CICR @ 791', pump
90 sx through perfs.
Leave 10 sx on top.Perf at 1737' & 1594'
CICR @ 1666', pump
35 sx through perfs.
Leave 30 sx on top to
1369'.Perf at 2940' & 2840'
CICR @ 2890', pump
40 sx through perfs.
Leave 10 sx on top.Perf at 4600' & 4500'
CICR @ 4550', pump
40 sx through perfs.
Leave 10 sx on top.**CBL Required**

VERIFY TOC w/ CBL

Perf at 7176' & 7076'
CICR @ 7126', pump
40 sx through perfs.
Leave 10 sx on top.Pressure test casing
after setting CIBP.CIBP w/ 3 sx @ 7816'
(75' above top perf).