

EXTRACTION OIL & GAS

WELD COUNTY

Sec 3-T4N-R68W

JESSER EAST 3E-20-02

OWB

Design: FINAL SURVEY

Standard Survey Report

15 July, 2024



Project: WELD COUNTY
Site: Sec 3-T4N-R68W
Well: JESSER EAST 3E-20-02
Wellbore: OWB
Design: FINAL SURVEY

PROJECT DETAILS: WELD COUNTY

Geodetic System: US State Plane 1983
Datum: North American Datum 1983
Ellipsoid: GRS 1980
Zone: Colorado Northern Zone
System Datum: Mean Sea Level



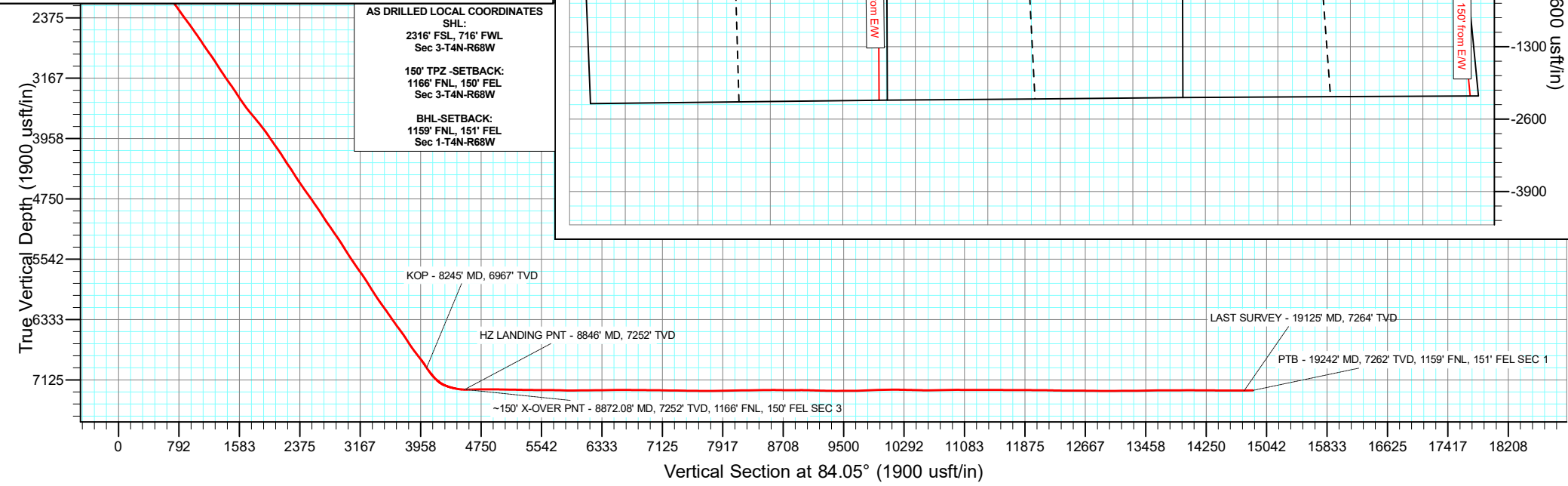
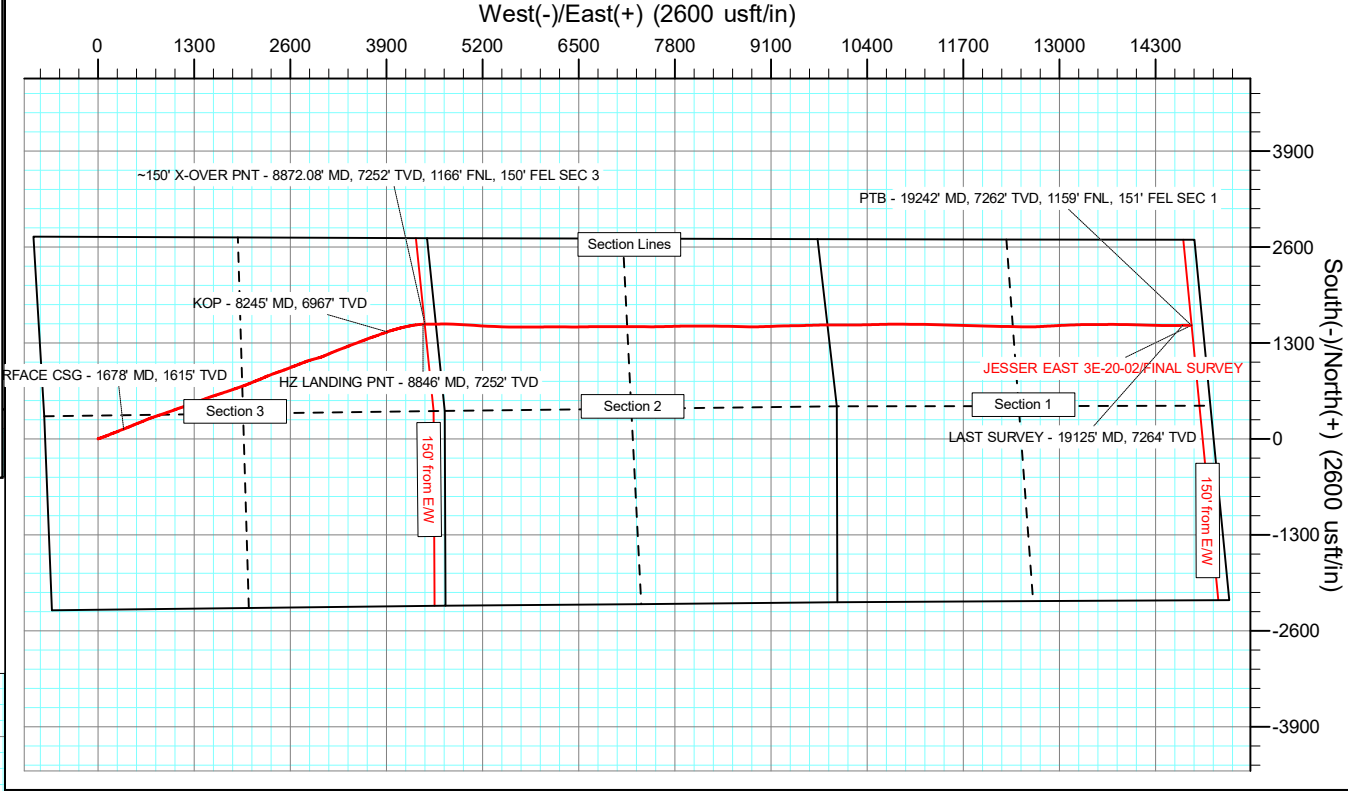
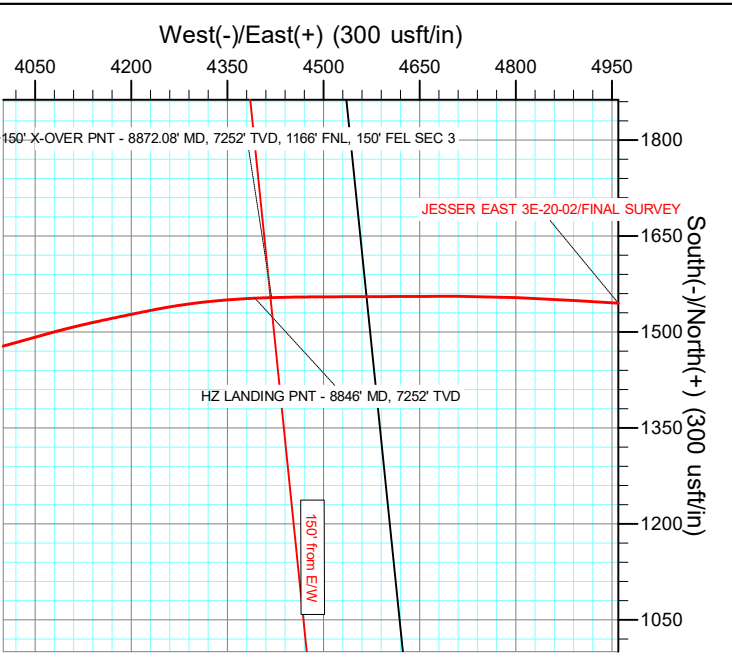
Azimuths to True North
Magnetic North: 7.65°
Magnetic Field
Strength: 51574.6nT
Dip Angle: 66.45°
Date: 7/8/2024
Model: IGRF2020

WELL DETAILS: JESSER EAST 3E-20-02

5111.00						Slot
+N/-S	+E/-W	Northing	Easting	Latitude	Longitude	
0.00	0.00	1367724.98	3140311.59	40.341713°N	104.996637°W	

ANNOTATIONS

MD	Inc	Azi	TVD	+N/-S	+E/-W	VSect	Departure	Annotation
1678.00	30.46	68.16	1615.37	132.82	344.39	356.30	370.04	SURFACE CSG - 1678' MD, 1615' TVD
8245.00	34.74	70.39	6966.79	1449.20	3907.99	4037.08	4171.20	KOP - 8245' MD, 6967' TVD
8846.00	88.52	87.36	7252.14	1552.74	4392.97	4530.17	4668.12	HZ LANDING PNT - 8846' MD, 7252' TVD
8872.08	91.06	88.46	7252.24	1553.69	4419.03	4556.19	4694.13	~150' X-OVER PNT - 8872.08' MD, 7252' TVD, 1166' FNL, 150' FEL SEC 3
19125.00	90.79	88.94	7263.86	1537.48	14667.38	14747.74	14945.79	LAST SURVEY - 19125' MD, 7264' TVD
19242.00	90.79	88.94	7262.25	1539.65	14784.35	14864.31	15062.77	PTB - 19242' MD, 7262' TVD, 1159' FNL, 151' FEL SEC 1



Civitas Resources

Survey Report

Company:	EXTRACTION OIL & GAS	Local Co-ordinate Reference:	Well JESSER EAST 3E-20-02
Project:	WELD COUNTY	TVD Reference:	KB 25' @ 5136.00usft
Site:	Sec 3-T4N-R68W	MD Reference:	KB 25' @ 5136.00usft
Well:	JESSER EAST 3E-20-02	North Reference:	True
Wellbore:	OWB	Survey Calculation Method:	Minimum Curvature
Design:	FINAL SURVEY	Database:	EDM

Project	WELD COUNTY		
Map System:	US State Plane 1983	System Datum:	Mean Sea Level
Geo Datum:	North American Datum 1983		
Map Zone:	Colorado Northern Zone		

Site		Sec 3-T4N-R68W					
Site Position:		Northing:	1,365,399.13	usft	Latitude:	40.335338°N	
From:	Lat/Long	Easting:	3,139,700.88	usft	Longitude:	104.998875°W	
Position Uncertainty:	0.00	usft	Slot Radius:	13.200	in	Grid Convergence:	0.32 °

Well	JESSER EAST 3E-20-02					
Well Position	+N/-S	0.00 usft	Northing:	1,367,724.98 usft	Latitude:	40.341713°N
	+E/-W	0.00 usft	Easting:	3,140,311.59 usft	Longitude:	104.996637°W
Position Uncertainty		0.00 usft	Wellhead Elevation:	usft	Ground Level:	5,111.00 usft

Wellbore	OWB				
Magnetics	Model Name	Sample Date	Declination (°)	Dip Angle (°)	Field Strength (nT)
	IGRF2020	7/8/2024	7.65	66.45	51,574.58451931

Design	FINAL SURVEY				
Audit Notes:					
Version:	1.0	Phase:	ACTUAL	Tie On Depth:	0.00
Vertical Section:	Depth From (TVD) (usft)	+N/-S (usft)	+E/-W (usft)	Direction (°)	
	0.00	0.00	0.00	84.05	

Survey Program	Date	7/15/2024			
From (usft)	To (usft)	Survey (Wellbore)	Tool Name	Description	
124.00	1,614.00	SURFACE SURVEY (OWB)	MWD OWSG	OWSG MWD - Standard	
1,763.00	19,242.00	FINAL SURVEY (OWB)	MWD OWSG	OWSG MWD - Standard	

Survey										
Measured Depth (usft)	Inclination (°)	Azimuth (°)	Vertical Depth (usft)	+N/-S (usft)	+E/-W (usft)	Vertical Section (usft)	Dogleg Rate (°/100ft)	Build Rate (°/100ft)	Turn Rate (°/100ft)	
0.00	0.00	0.00	0.00	0.00	0.00	0.00	0.00	0.00	0.00	
124.00	0.52	31.04	124.00	0.48	0.29	0.34	0.42	0.42	0.00	
214.00	1.88	61.18	213.98	1.54	1.79	1.94	1.62	1.51	33.49	
304.00	4.22	70.55	303.84	3.36	6.21	6.53	2.65	2.60	10.41	
394.00	4.61	71.62	393.58	5.60	12.77	13.28	0.44	0.43	1.19	
484.00	5.26	75.68	483.24	7.76	20.20	20.89	0.82	0.72	4.51	
578.00	6.44	72.67	576.75	10.40	29.40	30.32	1.30	1.26	-3.20	
673.00	8.39	67.59	670.95	14.63	40.90	42.19	2.16	2.05	-5.35	
768.00	10.41	69.43	764.67	20.29	55.34	57.15	2.15	2.13	1.94	
863.00	12.31	71.00	857.81	26.60	72.95	75.32	2.03	2.00	1.65	

Civitas Resources

Survey Report

Company:	EXTRACTION OIL & GAS	Local Co-ordinate Reference:	Well JESSER EAST 3E-20-02
Project:	WELD COUNTY	TVD Reference:	KB 25' @ 5136.00usft
Site:	Sec 3-T4N-R68W	MD Reference:	KB 25' @ 5136.00usft
Well:	JESSER EAST 3E-20-02	North Reference:	True
Wellbore:	OWB	Survey Calculation Method:	Minimum Curvature
Design:	FINAL SURVEY	Database:	EDM

Survey									
Measured Depth (usft)	Inclination (°)	Azimuth (°)	Vertical Depth (usft)	+N/-S (usft)	+E/-W (usft)	Vertical Section (usft)	Dogleg Rate (°/100ft)	Build Rate (°/100ft)	Turn Rate (°/100ft)
957.00	14.38	68.88	949.27	34.07	93.32	96.35	2.26	2.20	-2.26
1,052.00	16.50	68.98	1,040.83	43.16	116.92	120.76	2.23	2.23	0.11
1,146.00	19.03	68.32	1,130.34	53.61	143.63	148.41	2.70	2.69	-0.70
1,241.00	19.95	67.21	1,219.90	65.61	172.96	178.83	1.04	0.97	-1.17
1,336.00	21.43	69.96	1,308.77	77.84	204.21	211.17	1.86	1.56	2.89
1,430.00	24.03	70.52	1,395.46	90.11	238.39	246.44	2.78	2.77	0.60
1,525.00	26.38	67.43	1,481.42	104.66	276.12	285.48	2.83	2.47	-3.25
1,614.00	29.65	67.42	1,559.98	120.70	314.72	325.53	3.67	3.67	-0.01
1,678.00	30.46	68.16	1,615.37	132.82	344.39	356.30	1.40	1.27	1.15
SURFACE CSG - 1678' MD, 1615' TVD									
1,763.00	31.55	69.08	1,688.22	148.78	385.17	398.50	1.40	1.28	1.09
1,858.00	33.53	67.06	1,768.31	167.88	432.55	447.61	2.38	2.08	-2.13
1,952.00	35.70	66.70	1,845.66	188.85	481.65	498.63	2.32	2.31	-0.38
2,047.00	37.08	69.28	1,922.14	209.95	533.90	552.78	2.17	1.45	2.72
2,236.00	33.36	66.43	2,076.53	250.91	634.87	657.44	2.15	-1.97	-1.51
2,331.00	34.90	68.12	2,155.17	271.48	684.03	708.47	1.90	1.62	1.78
2,425.00	36.95	71.76	2,231.29	290.35	735.83	761.95	3.15	2.18	3.87
2,519.00	35.23	70.84	2,307.25	308.09	788.28	815.95	1.92	-1.83	-0.98
2,614.00	37.72	71.84	2,383.63	326.14	841.78	871.04	2.69	2.62	1.05
2,707.00	37.02	71.08	2,457.54	344.09	895.30	926.13	0.90	-0.75	-0.82
2,802.00	35.28	70.44	2,534.25	362.55	948.21	980.66	1.87	-1.83	-0.67
2,918.00	36.17	70.41	2,628.42	385.24	1,012.03	1,046.49	0.77	0.77	-0.03
3,013.00	33.46	69.13	2,706.41	403.98	1,062.92	1,099.05	2.95	-2.85	-1.35
3,107.00	35.24	72.41	2,784.02	421.41	1,112.99	1,150.66	2.73	1.89	3.49
3,202.00	36.80	71.75	2,860.86	438.60	1,166.15	1,205.30	1.69	1.64	-0.69
3,297.00	33.34	70.89	2,938.60	456.06	1,217.85	1,258.54	3.68	-3.64	-0.91
3,391.00	33.10	69.72	3,017.24	473.42	1,266.34	1,308.56	0.73	-0.26	-1.24
3,486.00	34.86	69.79	3,096.01	491.79	1,316.15	1,360.01	1.85	1.85	0.07
3,580.00	35.20	68.53	3,172.98	510.98	1,366.57	1,412.15	0.85	0.36	-1.34
3,675.00	36.94	69.49	3,249.77	531.01	1,418.79	1,466.17	1.93	1.83	1.01
3,769.00	34.26	69.08	3,326.20	550.36	1,469.97	1,519.07	2.86	-2.85	-0.44
3,864.00	33.85	70.78	3,404.90	568.62	1,519.94	1,570.66	1.09	-0.43	1.79
3,958.00	35.31	72.38	3,482.30	585.46	1,570.55	1,622.75	1.83	1.55	1.70
4,052.00	37.50	72.17	3,557.95	602.44	1,623.69	1,677.36	2.33	2.33	-0.22
4,147.00	40.76	71.94	3,631.63	620.92	1,680.72	1,735.99	3.43	3.43	-0.24
4,241.00	40.24	71.59	3,703.11	640.02	1,738.70	1,795.64	0.60	-0.55	-0.37
4,336.00	39.34	70.99	3,776.11	659.52	1,796.28	1,854.93	1.03	-0.95	-0.63
4,431.00	37.82	70.88	3,850.37	678.87	1,852.27	1,912.63	1.60	-1.60	-0.12
4,526.00	34.39	70.53	3,927.11	697.36	1,905.10	1,967.09	3.62	-3.61	-0.37
4,620.00	35.24	71.24	4,004.29	714.93	1,955.81	2,019.34	1.00	0.90	0.76
4,715.00	37.23	68.28	4,080.91	734.38	2,008.47	2,073.74	2.79	2.09	-3.12
4,810.00	33.99	67.24	4,158.14	755.29	2,059.67	2,126.83	3.47	-3.41	-1.09
4,905.00	32.64	67.72	4,237.53	775.28	2,107.87	2,176.83	1.45	-1.42	0.51

Civitas Resources

Survey Report

Company:	EXTRACTION OIL & GAS	Local Co-ordinate Reference:	Well JESSER EAST 3E-20-02
Project:	WELD COUNTY	TVD Reference:	KB 25' @ 5136.00usft
Site:	Sec 3-T4N-R68W	MD Reference:	KB 25' @ 5136.00usft
Well:	JESSER EAST 3E-20-02	North Reference:	True
Wellbore:	OWB	Survey Calculation Method:	Minimum Curvature
Design:	FINAL SURVEY	Database:	EDM

Survey										
Measured Depth (usft)	Inclination (°)	Azimuth (°)	Vertical Depth (usft)	+N/-S (usft)	+E/-W (usft)	Vertical Section (usft)	Dogleg Rate (°/100ft)	Build Rate (°/100ft)	Turn Rate (°/100ft)	
4,999.00	36.54	69.18	4,314.90	794.85	2,157.50	2,228.23	4.24	4.15	1.55	
5,093.00	32.90	67.40	4,392.15	814.61	2,207.24	2,279.75	4.02	-3.87	-1.89	
5,188.00	34.12	64.60	4,471.36	835.96	2,255.14	2,329.59	2.07	1.28	-2.95	
5,283.00	35.87	69.33	4,549.20	857.22	2,305.26	2,381.65	3.40	1.84	4.98	
5,378.00	35.68	68.97	4,626.27	876.98	2,357.16	2,435.32	0.30	-0.20	-0.38	
5,472.00	36.97	71.13	4,702.01	895.96	2,409.50	2,489.34	1.93	1.37	2.30	
5,567.00	34.59	70.85	4,779.07	914.05	2,462.01	2,543.44	2.51	-2.51	-0.29	
5,661.00	36.21	70.40	4,855.69	932.12	2,513.37	2,596.40	1.75	1.72	-0.48	
5,756.00	33.69	67.41	4,933.56	951.66	2,564.15	2,648.93	3.21	-2.65	-3.15	
5,850.00	33.39	69.68	5,011.91	970.65	2,612.48	2,698.96	1.37	-0.32	2.41	
5,945.00	36.91	69.44	5,089.57	989.76	2,663.72	2,751.91	3.71	3.71	-0.25	
6,039.00	34.71	67.51	5,165.80	1,009.91	2,714.88	2,804.88	2.63	-2.34	-2.05	
6,134.00	36.48	69.78	5,243.05	1,030.02	2,766.38	2,858.19	2.32	1.86	2.39	
6,229.00	33.21	68.52	5,321.01	1,049.31	2,817.10	2,910.64	3.52	-3.44	-1.33	
6,323.00	31.95	74.18	5,400.24	1,065.52	2,865.00	2,959.95	3.51	-1.34	6.02	
6,418.00	33.45	74.62	5,480.18	1,079.32	2,914.43	3,010.55	1.60	1.58	0.46	
6,512.00	34.10	75.53	5,558.31	1,092.78	2,964.92	3,062.17	0.88	0.69	0.97	
6,607.00	34.97	70.03	5,636.59	1,108.73	3,016.31	3,114.93	3.41	0.92	-5.79	
6,702.00	37.74	67.38	5,713.10	1,129.22	3,068.75	3,169.21	3.35	2.92	-2.79	
6,796.00	34.76	66.23	5,788.89	1,151.09	3,119.84	3,222.29	3.25	-3.17	-1.22	
6,891.00	32.84	66.77	5,867.83	1,172.17	3,168.30	3,272.67	2.05	-2.02	0.57	
6,986.00	33.01	69.02	5,947.58	1,191.59	3,216.13	3,322.26	1.30	0.18	2.37	
7,080.00	34.07	69.61	6,025.93	1,209.93	3,264.72	3,372.49	1.18	1.13	0.63	
7,174.00	36.07	69.57	6,102.86	1,228.77	3,315.34	3,424.78	2.13	2.13	-0.04	
7,269.00	37.48	66.93	6,178.95	1,249.86	3,368.14	3,479.49	2.23	1.48	-2.78	
7,363.00	35.33	69.58	6,254.61	1,270.55	3,419.94	3,533.14	2.83	-2.29	2.82	
7,458.00	36.17	69.35	6,331.71	1,290.02	3,471.91	3,586.86	0.90	0.88	-0.24	
7,553.00	36.21	69.12	6,408.38	1,309.91	3,524.36	3,641.09	0.15	0.04	-0.24	
7,647.00	38.02	70.20	6,483.34	1,329.61	3,577.55	3,696.03	2.05	1.93	1.15	
7,742.00	34.46	68.04	6,559.95	1,349.58	3,630.02	3,750.28	3.98	-3.75	-2.27	
7,836.00	33.25	70.94	6,638.01	1,367.94	3,679.05	3,800.95	2.15	-1.29	3.09	
7,931.00	36.29	71.54	6,716.04	1,385.36	3,730.34	3,853.77	3.22	3.20	0.63	
8,025.00	38.82	69.69	6,790.56	1,404.39	3,784.37	3,909.48	2.95	2.69	-1.97	
8,119.00	38.19	70.69	6,864.12	1,424.23	3,839.43	3,966.30	0.94	-0.67	1.06	
8,214.00	33.47	69.29	6,941.12	1,443.22	3,891.68	4,020.23	5.04	-4.97	-1.47	
8,245.00	34.74	70.39	6,966.79	1,449.20	3,907.99	4,037.08	4.56	4.10	3.55	
KOP - 8245' MD, 6967' TVD										
8,308.00	37.35	72.42	7,017.73	1,461.00	3,943.13	4,073.25	4.56	4.14	3.22	
8,403.00	42.60	74.55	7,090.50	1,478.29	4,001.63	4,133.23	5.71	5.53	2.24	
8,497.00	52.47	74.32	7,153.89	1,496.88	4,068.35	4,201.51	10.50	10.50	-0.24	
8,590.00	68.81	77.66	7,199.34	1,516.25	4,146.76	4,281.50	17.84	17.57	3.59	
8,687.00	75.71	78.88	7,228.88	1,535.00	4,237.16	4,373.36	7.21	7.11	1.26	
8,782.00	82.29	84.64	7,247.01	1,548.30	4,329.37	4,466.45	9.13	6.93	6.06	
8,846.00	88.52	87.36	7,252.14	1,552.74	4,392.97	4,530.17	10.61	9.73	4.25	

Civitas Resources

Survey Report

Company:	EXTRACTION OIL & GAS	Local Co-ordinate Reference:	Well JESSER EAST 3E-20-02
Project:	WELD COUNTY	TVD Reference:	KB 25' @ 5136.00usft
Site:	Sec 3-T4N-R68W	MD Reference:	KB 25' @ 5136.00usft
Well:	JESSER EAST 3E-20-02	North Reference:	True
Wellbore:	OWB	Survey Calculation Method:	Minimum Curvature
Design:	FINAL SURVEY	Database:	EDM

Survey									
Measured Depth (usft)	Inclination (°)	Azimuth (°)	Vertical Depth (usft)	+N/-S (usft)	+E/-W (usft)	Vertical Section (usft)	Dogleg Rate (°/100ft)	Build Rate (°/100ft)	Turn Rate (°/100ft)
HZ LANDING PNT - 8846' MD, 7252' TVD									
8,872.08	91.06	88.46	7,252.24	1,553.69	4,419.03	4,556.19	10.61	9.74	4.22
~150' X-OVER PNT - 8872.08' MD, 7252' TVD, 1166' FNL, 150' FEL SEC 3									
8,876.00	91.44	88.63	7,252.15	1,553.79	4,422.95	4,560.10	10.61	9.74	4.22
8,970.00	90.67	89.90	7,250.42	1,554.99	4,516.92	4,653.69	1.58	-0.82	1.35
9,065.00	90.22	89.69	7,249.68	1,555.33	4,611.92	4,748.21	0.52	-0.47	-0.22
9,160.00	90.55	89.87	7,249.04	1,555.70	4,706.91	4,842.74	0.40	0.35	0.19
9,254.00	89.25	92.55	7,249.21	1,553.71	4,800.88	4,935.99	3.17	-1.38	2.85
9,349.00	89.11	93.28	7,250.57	1,548.88	4,895.75	5,029.85	0.78	-0.15	0.77
9,444.00	89.21	93.49	7,251.96	1,543.27	4,990.57	5,123.58	0.24	0.11	0.22
9,538.00	88.57	93.49	7,253.78	1,537.55	5,084.38	5,216.29	0.68	-0.68	0.00
9,633.00	88.86	94.10	7,255.91	1,531.27	5,179.15	5,309.90	0.71	0.31	0.64
9,727.00	89.50	92.25	7,257.26	1,526.06	5,272.99	5,402.70	2.08	0.68	-1.97
9,822.00	89.97	92.37	7,257.70	1,522.23	5,367.91	5,496.71	0.51	0.49	0.13
9,916.00	89.76	92.63	7,257.92	1,518.13	5,461.82	5,589.69	0.36	-0.22	0.28
10,011.00	89.03	90.21	7,258.92	1,515.78	5,556.78	5,683.89	2.66	-0.77	-2.55
10,106.00	88.31	89.72	7,261.13	1,515.84	5,651.75	5,778.36	0.92	-0.76	-0.52
10,201.00	88.30	90.06	7,263.94	1,516.02	5,746.71	5,872.83	0.36	-0.01	0.36
10,295.00	91.00	89.81	7,264.51	1,516.13	5,840.70	5,966.32	2.88	2.87	-0.27
10,390.00	90.99	90.11	7,262.86	1,516.19	5,935.69	6,060.81	0.32	-0.01	0.32
10,485.00	90.48	89.58	7,261.64	1,516.45	6,030.68	6,155.31	0.77	-0.54	-0.56
10,579.00	90.08	89.46	7,261.18	1,517.24	6,124.67	6,248.88	0.44	-0.43	-0.13
10,674.00	90.69	90.01	7,260.54	1,517.68	6,219.67	6,343.41	0.86	0.64	0.58
10,769.00	91.92	91.28	7,258.38	1,516.61	6,314.63	6,437.76	1.86	1.29	1.34
10,863.00	89.89	89.82	7,256.90	1,515.70	6,408.61	6,531.14	2.66	-2.16	-1.55
10,958.00	89.95	89.18	7,257.03	1,516.53	6,503.61	6,625.71	0.68	0.06	-0.67
11,083.00	89.31	88.59	7,257.84	1,518.97	6,628.58	6,750.26	0.70	-0.51	-0.47
11,178.00	89.53	89.90	7,258.80	1,520.22	6,723.56	6,844.86	1.40	0.23	1.38
11,273.00	89.31	89.39	7,259.76	1,520.81	6,818.56	6,939.41	0.58	-0.23	-0.54
11,367.00	89.60	90.12	7,260.65	1,521.21	6,912.55	7,032.94	0.84	0.31	0.78
11,462.00	89.05	89.98	7,261.77	1,521.13	7,007.54	7,127.41	0.60	-0.58	-0.15
11,557.00	89.07	89.81	7,263.33	1,521.30	7,102.53	7,221.90	0.18	0.02	-0.18
11,651.00	89.01	90.03	7,264.91	1,521.43	7,196.52	7,315.40	0.24	-0.06	0.23
11,746.00	88.96	90.23	7,266.59	1,521.21	7,291.50	7,409.85	0.22	-0.05	0.21
11,841.00	89.55	91.29	7,267.82	1,519.95	7,386.48	7,504.19	1.28	0.62	1.12
11,935.00	89.01	90.07	7,269.00	1,518.84	7,480.47	7,597.55	1.42	-0.57	-1.30
12,030.00	90.00	88.87	7,269.83	1,519.72	7,575.46	7,692.12	1.64	1.04	-1.26
12,125.00	89.81	88.56	7,269.98	1,521.85	7,670.43	7,786.81	0.38	-0.20	-0.33
12,219.00	91.78	88.72	7,268.68	1,524.08	7,764.39	7,880.49	2.10	2.10	0.17
12,314.00	92.05	88.32	7,265.50	1,526.53	7,859.31	7,975.15	0.51	0.28	-0.42
12,409.00	90.32	90.24	7,263.54	1,527.72	7,954.27	8,069.73	2.72	-1.82	2.02
12,503.00	90.62	90.49	7,262.77	1,527.13	8,048.27	8,163.16	0.42	0.32	0.27
12,598.00	90.72	89.80	7,261.66	1,526.89	8,143.26	8,257.61	0.73	0.11	-0.73

Civitas Resources

Survey Report

Company:	EXTRACTION OIL & GAS	Local Co-ordinate Reference:	Well JESSER EAST 3E-20-02
Project:	WELD COUNTY	TVD Reference:	KB 25' @ 5136.00usft
Site:	Sec 3-T4N-R68W	MD Reference:	KB 25' @ 5136.00usft
Well:	JESSER EAST 3E-20-02	North Reference:	True
Wellbore:	OWB	Survey Calculation Method:	Minimum Curvature
Design:	FINAL SURVEY	Database:	EDM

Survey										
Measured Depth (usft)	Inclination (°)	Azimuth (°)	Vertical Depth (usft)	+N/-S (usft)	+E/-W (usft)	Vertical Section (usft)	Dogleg Rate (°/100ft)	Build Rate (°/100ft)	Turn Rate (°/100ft)	
12,692.00	90.99	89.78	7,260.25	1,527.23	8,237.25	8,351.13	0.29	0.29	-0.02	
12,787.00	90.50	90.19	7,259.02	1,527.25	8,332.24	8,445.61	0.67	-0.52	0.43	
12,882.00	91.07	90.97	7,257.72	1,526.29	8,427.22	8,539.99	1.02	0.60	0.82	
12,976.00	88.57	90.75	7,258.01	1,524.88	8,521.21	8,633.32	2.67	-2.66	-0.23	
13,071.00	89.15	91.00	7,259.90	1,523.43	8,616.18	8,727.63	0.66	0.61	0.26	
13,165.00	90.23	91.39	7,260.41	1,521.47	8,710.15	8,820.90	1.22	1.15	0.41	
13,260.00	90.79	91.96	7,259.57	1,518.69	8,805.11	8,915.05	0.84	0.59	0.60	
13,355.00	88.49	88.65	7,260.16	1,518.19	8,900.08	9,009.47	4.24	-2.42	-3.48	
13,449.00	88.31	87.99	7,262.79	1,520.94	8,994.01	9,103.17	0.73	-0.19	-0.70	
13,544.00	88.49	88.13	7,265.44	1,524.16	9,088.92	9,197.90	0.24	0.19	0.15	
13,639.00	88.79	88.20	7,267.70	1,527.20	9,183.84	9,292.63	0.32	0.32	0.07	
13,733.00	89.73	88.26	7,268.91	1,530.10	9,277.79	9,386.37	1.00	1.00	0.06	
13,828.00	90.50	88.96	7,268.72	1,532.41	9,372.76	9,481.07	1.10	0.81	0.74	
13,923.00	90.07	88.41	7,268.25	1,534.59	9,467.73	9,575.76	0.73	-0.45	-0.58	
14,017.00	90.99	88.41	7,267.38	1,537.20	9,561.69	9,669.48	0.98	0.98	0.00	
14,112.00	92.36	88.73	7,264.60	1,539.57	9,656.62	9,764.14	1.48	1.44	0.34	
14,206.00	92.58	87.91	7,260.55	1,542.32	9,750.49	9,857.79	0.90	0.23	-0.87	
14,301.00	91.25	89.60	7,257.37	1,544.38	9,845.41	9,952.42	2.26	-1.40	1.78	
14,395.00	91.00	90.37	7,255.53	1,544.41	9,939.39	10,045.89	0.86	-0.27	0.82	
14,490.00	91.29	89.73	7,253.63	1,544.32	10,034.37	10,140.36	0.74	0.31	-0.67	
14,585.00	88.60	90.36	7,253.72	1,544.25	10,129.36	10,234.83	2.91	-2.83	0.66	
14,680.00	88.84	90.05	7,255.84	1,543.91	10,224.33	10,329.26	0.41	0.25	-0.33	
14,775.00	88.37	89.00	7,258.16	1,544.70	10,319.30	10,423.79	1.21	-0.49	-1.11	
14,869.00	88.35	88.70	7,260.85	1,546.58	10,413.24	10,517.43	0.32	-0.02	-0.32	
14,964.00	90.38	88.46	7,261.90	1,548.93	10,508.20	10,612.12	2.15	2.14	-0.25	
15,058.00	90.92	88.64	7,260.83	1,551.31	10,602.17	10,705.82	0.61	0.57	0.19	
15,153.00	91.46	88.80	7,258.86	1,553.44	10,697.12	10,800.49	0.59	0.57	0.17	
15,248.00	91.92	89.60	7,256.06	1,554.76	10,792.07	10,895.06	0.97	0.48	0.84	
15,342.00	89.09	91.15	7,255.23	1,554.15	10,886.05	10,988.48	3.43	-3.01	1.65	
15,437.00	89.39	90.94	7,256.49	1,552.41	10,981.03	11,082.76	0.39	0.32	-0.22	
15,532.00	89.96	90.54	7,257.03	1,551.19	11,076.02	11,177.11	0.73	0.60	-0.42	
15,626.00	90.35	90.64	7,256.77	1,550.22	11,170.01	11,270.50	0.43	0.41	0.11	
15,721.00	89.92	91.48	7,256.55	1,548.46	11,265.00	11,364.79	0.99	-0.45	0.88	
15,816.00	90.45	91.26	7,256.24	1,546.19	11,359.97	11,459.02	0.60	0.56	-0.23	
15,911.00	88.87	91.40	7,256.81	1,543.98	11,454.94	11,553.25	1.67	-1.66	0.15	
16,005.00	89.32	92.12	7,258.29	1,541.10	11,548.88	11,646.39	0.90	0.48	0.77	
16,100.00	89.94	91.12	7,258.91	1,538.41	11,643.84	11,740.56	1.24	0.65	-1.05	
16,194.00	90.71	91.09	7,258.37	1,536.60	11,737.82	11,833.84	0.82	0.82	-0.03	
16,288.00	88.91	92.08	7,258.68	1,534.00	11,831.78	11,927.03	2.19	-1.91	1.05	
16,383.00	89.14	91.80	7,260.30	1,530.78	11,926.71	12,021.12	0.38	0.24	-0.29	
16,477.00	90.09	91.48	7,260.93	1,528.09	12,020.67	12,114.29	1.07	1.01	-0.34	
16,572.00	88.38	91.81	7,262.20	1,525.37	12,115.62	12,208.44	1.83	-1.80	0.35	
16,666.00	88.96	90.96	7,264.38	1,523.10	12,209.56	12,301.65	1.09	0.62	-0.90	
16,761.00	89.31	90.65	7,265.82	1,521.76	12,304.54	12,395.98	0.49	0.37	-0.33	

Civitas Resources

Survey Report

Company:	EXTRACTION OIL & GAS	Local Co-ordinate Reference:	Well JESSER EAST 3E-20-02
Project:	WELD COUNTY	TVD Reference:	KB 25' @ 5136.00usft
Site:	Sec 3-T4N-R68W	MD Reference:	KB 25' @ 5136.00usft
Well:	JESSER EAST 3E-20-02	North Reference:	True
Wellbore:	OWB	Survey Calculation Method:	Minimum Curvature
Design:	FINAL SURVEY	Database:	EDM

Survey									
Measured Depth (usft)	Inclination (°)	Azimuth (°)	Vertical Depth (usft)	+N/-S (usft)	+E/-W (usft)	Vertical Section (usft)	Dogleg Rate (°/100ft)	Build Rate (°/100ft)	Turn Rate (°/100ft)
16,856.00	89.59	90.60	7,266.73	1,520.73	12,399.53	12,490.35	0.30	0.29	-0.05
16,950.00	90.14	91.97	7,266.95	1,518.62	12,493.50	12,583.60	1.57	0.59	1.46
17,045.00	89.76	90.27	7,267.03	1,516.76	12,588.48	12,677.88	1.83	-0.40	-1.79
17,139.00	89.15	87.47	7,267.93	1,518.61	12,682.45	12,771.53	3.05	-0.65	-2.98
17,234.00	89.17	86.47	7,269.32	1,523.63	12,777.31	12,866.40	1.05	0.02	-1.05
17,328.00	90.03	87.19	7,269.98	1,528.83	12,871.16	12,960.28	1.19	0.91	0.77
17,423.00	90.52	86.33	7,269.52	1,534.20	12,966.00	13,055.17	1.04	0.52	-0.91
17,517.00	90.32	87.73	7,268.83	1,539.07	13,059.87	13,149.04	1.50	-0.21	1.49
17,612.00	90.40	87.87	7,268.23	1,542.72	13,154.80	13,243.84	0.17	0.08	0.15
17,707.00	90.62	87.64	7,267.39	1,546.44	13,249.72	13,338.64	0.34	0.23	-0.24
17,801.00	90.67	89.61	7,266.33	1,548.70	13,343.69	13,432.33	2.10	0.05	2.10
17,896.00	91.81	89.46	7,264.27	1,549.47	13,438.66	13,526.87	1.21	1.20	-0.16
17,990.00	90.04	90.03	7,262.76	1,549.88	13,532.64	13,620.39	1.98	-1.88	0.61
18,085.00	89.84	89.72	7,262.86	1,550.09	13,627.64	13,714.90	0.39	-0.21	-0.33
18,180.00	90.62	89.99	7,262.48	1,550.33	13,722.64	13,809.41	0.87	0.82	0.28
18,274.00	90.14	90.63	7,261.85	1,549.82	13,816.64	13,902.85	0.85	-0.51	0.68
18,369.00	90.86	91.00	7,261.02	1,548.47	13,911.62	13,997.18	0.85	0.76	0.39
18,464.00	88.94	91.02	7,261.19	1,546.80	14,006.60	14,091.48	2.02	-2.02	0.02
18,558.00	90.18	92.82	7,261.91	1,543.65	14,100.54	14,184.59	2.33	1.32	1.91
18,652.00	89.21	91.55	7,262.41	1,540.06	14,194.47	14,277.64	1.70	-1.03	-1.35
18,747.00	89.82	91.60	7,263.21	1,537.45	14,289.43	14,371.82	0.64	0.64	0.05
18,841.00	89.59	90.75	7,263.70	1,535.53	14,383.41	14,465.09	0.94	-0.24	-0.90
18,936.00	89.50	89.55	7,264.45	1,535.28	14,478.40	14,559.55	1.27	-0.09	-1.26
19,030.00	90.21	89.42	7,264.69	1,536.12	14,572.40	14,653.13	0.77	0.76	-0.14
19,125.00	90.79	88.94	7,263.86	1,537.48	14,667.38	14,747.74	0.79	0.61	-0.51
LAST SURVEY - 19125' MD, 7264' TVD									
19,242.00	90.79	88.94	7,262.25	1,539.65	14,784.35	14,864.31	0.00	0.00	0.00
PTB - 19242' MD, 7262' TVD, 1159' FNL, 151' FEL SEC 1									

Design Targets									
Target Name	Dip Angle (°)	Dip Dir. (°)	TVD (usft)	+N/-S (usft)	+E/-W (usft)	Northing (usft)	Easting (usft)	Latitude	Longitude
- hit/miss target									
- Shape									
LP-JESSER EAST 3E-2	0.00	0.00	7,255.00	1,527.16	4,419.03	1,369,277.20	3,144,721.88	40.345904°N	104.980783°W
- actual wellpath misses target center by 26.66usft at 8871.12usft MD (7252.25 TVD, 1553.66 N, 4418.07 E)									
- Point									
PBHL-JESSER EAST 3E-2	0.00	0.00	7,280.00	1,544.30	14,785.08	1,369,353.18	3,155,087.67	40.345940°N	104.943593°W
- actual wellpath misses target center by 18.37usft at 19242.00usft MD (7262.25 TVD, 1539.65 N, 14784.35 E)									
- Point									

Civitas Resources

Survey Report

Company:	EXTRACTION OIL & GAS	Local Co-ordinate Reference:	Well JESSER EAST 3E-20-02
Project:	WELD COUNTY	TVD Reference:	KB 25' @ 5136.00usft
Site:	Sec 3-T4N-R68W	MD Reference:	KB 25' @ 5136.00usft
Well:	JESSER EAST 3E-20-02	North Reference:	True
Wellbore:	OWB	Survey Calculation Method:	Minimum Curvature
Design:	FINAL SURVEY	Database:	EDM

Design Annotations

Measured Depth (usft)	Vertical Depth (usft)	Local Coordinates		Comment
		+N/-S (usft)	+E/-W (usft)	
1,678.00	1,615.37	132.82	344.39	SURFACE CSG - 1678' MD, 1615' TVD
8,245.00	6,966.79	1,449.20	3,907.99	KOP - 8245' MD, 6967' TVD
8,846.00	7,252.14	1,552.74	4,392.97	HZ LANDING PNT - 8846' MD, 7252' TVD
8,872.08	7,252.24	1,553.69	4,419.03	~150' X-OVER PNT - 8872.08' MD, 7252' TVD, 1166' FNL, 150' FEL SEC 3
19,125.00	7,263.86	1,537.48	14,667.38	LAST SURVEY - 19125' MD, 7264' TVD
19,242.00	7,262.25	1,539.65	14,784.35	PTB - 19242' MD, 7262' TVD, 1159' FNL, 151' FEL SEC 1

Checked By: _____ Approved By: _____ Date: _____