



August 19, 2021

Mr. Jim Goddard
Expedition Water Solutions
2015 Clubhouse Drive, Suite 201
Greeley, Colorado 80634

Via E-Mail: jgoddard@expedition-water.com

Subject: Quarterly Groundwater Monitoring Report – 3rd Quarter 2021
Expedition Water Solutions
EWS #13
23360 County Road 54
Greeley, Colorado 80631
CGRS Project #: 1-12456-18304aa

Mr. Goddard:

This report documents the groundwater monitoring activities performed by CGRS, Inc. (CGRS), at the Expedition Water Solutions (EWS) #13 facility located in Greeley, Colorado, as shown on the Site Location Map. Quarterly groundwater monitoring was performed on July 8, 2021, and consisted of obtaining groundwater levels from all accessible monitoring wells, measuring in-situ water quality parameters, and collecting groundwater quality samples for laboratory analyses from monitoring well locations.

Water quality samples were obtained from six groundwater monitoring wells (MW-1, MW-3, MW-4, MW-5, MW-6, and MW-7) and submitted to Origins Laboratory in Denver, Colorado for analysis of benzene, toluene, ethylbenzene, and total xylenes (BTEX), total dissolved solids (TDS), chloride, and sulfate. In-situ field parameters consisting of temperature, specific conductance, dissolved oxygen (DO), pH, and oxidation-reduction potential (ORP) were measured and documented after sampling each monitoring well. MW-2 was inaccessible at the time of sampling due to the manway being fixed in place. Maintenance will be performed on the manway and sampling of MW-2 will be attempted during the next scheduled groundwater monitoring event. Water quality analytical results and Chain of Custody documentation are included in Attachment A, summarized with historical data in Table 1, and depicted in the Groundwater Sample Location Map.

A review of groundwater analytical data indicates that all BTEX analytes from the groundwater quality samples submitted for analysis were below laboratory method detection limits (MDLs) and Colorado Oil and Gas Conservation Commission (COGCC) maximum allowable concentrations (MACs). Additionally, the inorganic analytes represent normal background water quality conditions historically observed at this facility.

To calculate groundwater elevation, depth to groundwater was measured in monitoring wells MW-1, MW-3, MW-4, MW-5, MW-6, and MW-7 and subtracted from surveyed reference elevations, as shown in Table 1. Review of the most recent sample data shows depth to groundwater varied between 6.79 feet below top of well casing (TOC) in monitoring well MW-7 and 10.36 feet below TOC in monitoring well MW-5. The inferred groundwater flow direction is to the southeast at a calculated hydraulic gradient of 0.001 ft/ft, as measured between wells MW-7 and MW-1. Inferred water table elevation contours are illustrated in the Groundwater Elevation Map.



At the request of EWS, CGRS will continue to perform groundwater monitoring activities, which will include obtaining water level measurements, obtaining in-situ field measurements, and collecting groundwater quality samples from project monitoring wells on a quarterly basis. The next monitoring event is scheduled for October 2021. If you have any questions regarding this report, or the project itself, please contact Drezden Kinnaird at dkinnaird@cgrs.com.

Sincerely,
CGRS, Inc.

Joshua Belanger
Staff Geologist

Reviewed by,

Elizabeth Wilson
Project Manager
Geologist

Enclosures:

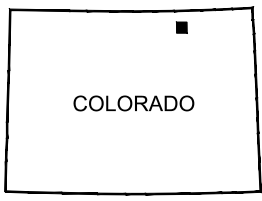
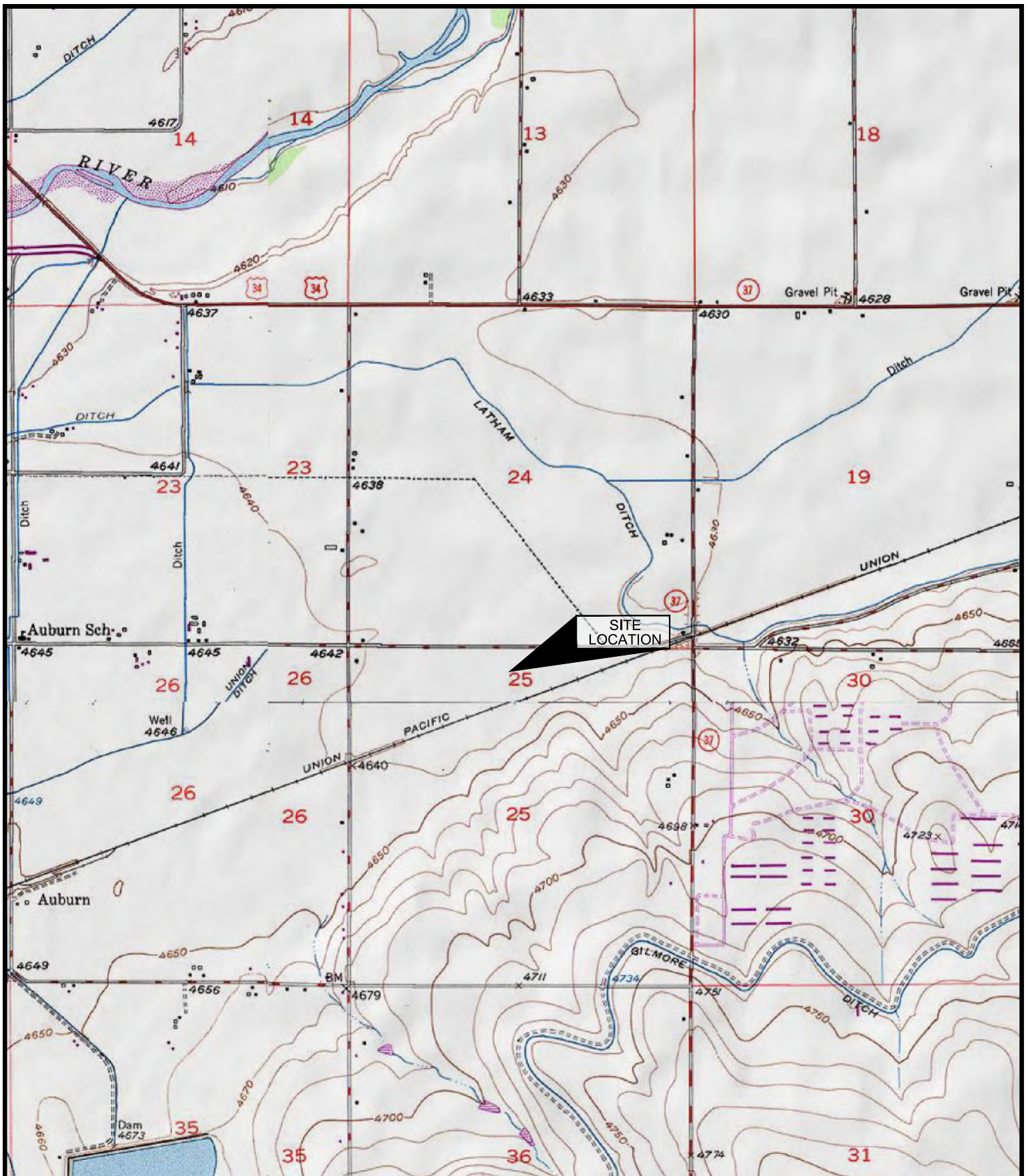
- Site Location Map
- Groundwater Sample Map
- Groundwater Elevation Map
- Table 1 – Groundwater Elevation and Analytical Data
- Attachment A – Groundwater Laboratory Report and Chain of Custody Documentation

Ec: Mr. Dave Gage – Expedition Water Solutions; dgage@expedition-water.com
Mr. Ben Frissell – Weld County Department of Public Health & Environment; bfrissell-durley@weldgov.com
Mr. Matt Fisher – Weld County Department of Public Health & Environment; mfisher@weldgov.com



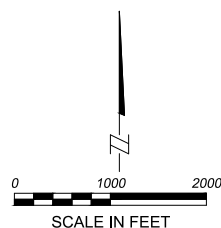
Maps

Site Location Map
Groundwater Sample Location Map
Groundwater Elevation Map



COLORADO

■ QUADRANGLE LOCATION



SCALE IN FEET

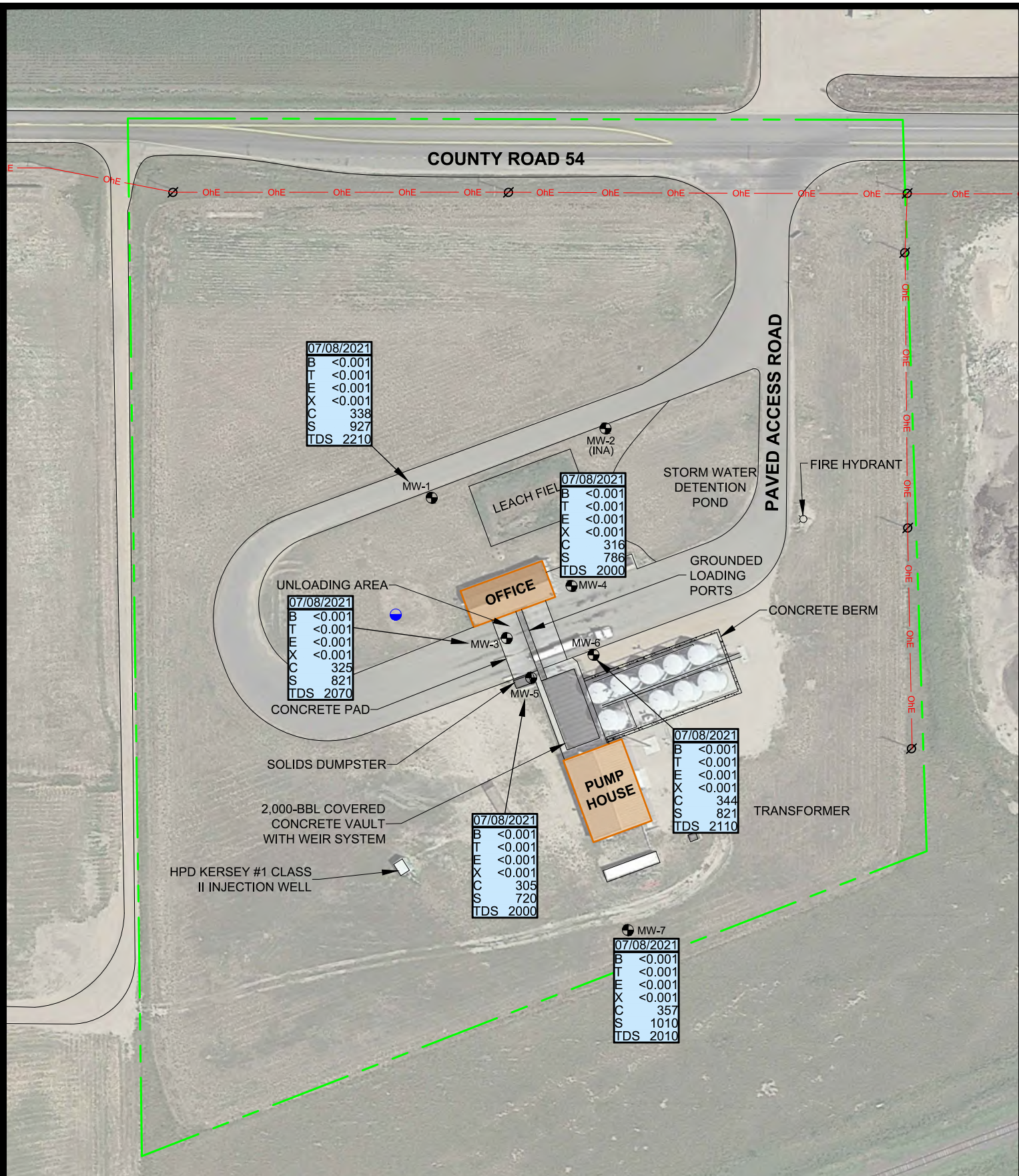
SITE LOCATION MAP

EXPEDITION WATER SOLUTIONS
EWS #13
23360 COUNTY ROAD 54
GREELEY, COLORADO 80631

PROJECT:
1-12456-18304aa
DATE:
01/28/2020

DRAFT:
CLB
REVIEW:
JAA



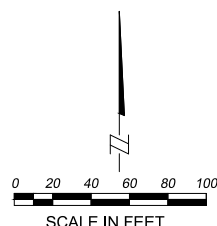


LEGEND

- MW-1 MONITORING WELL
- DOMESTIC WATER WELL
- UTILITY POLE
- OVERHEAD ELECTRIC
- APPROXIMATE PROPERTY BOUNDARY
- (INA) INACCESSIBLE

SAMPLE DATE

B	BENZENE (mg/L)
T	TOLUENE (mg/L)
E	ETHYLBENZENE (mg/L)
X	TOTAL XYLENES (mg/L)
C	CHLORIDE (mg/L)
S	SULFATES (mg/L)
TDS	TOTAL DISSOLVED SOLIDS (mg/L)



GROUNDWATER SAMPLE MAP

July 8, 2021

EXPEDITION WATER SOLUTIONS

EWS #13

23360 COUNTY ROAD 54

GREELEY, COLORADO 80631

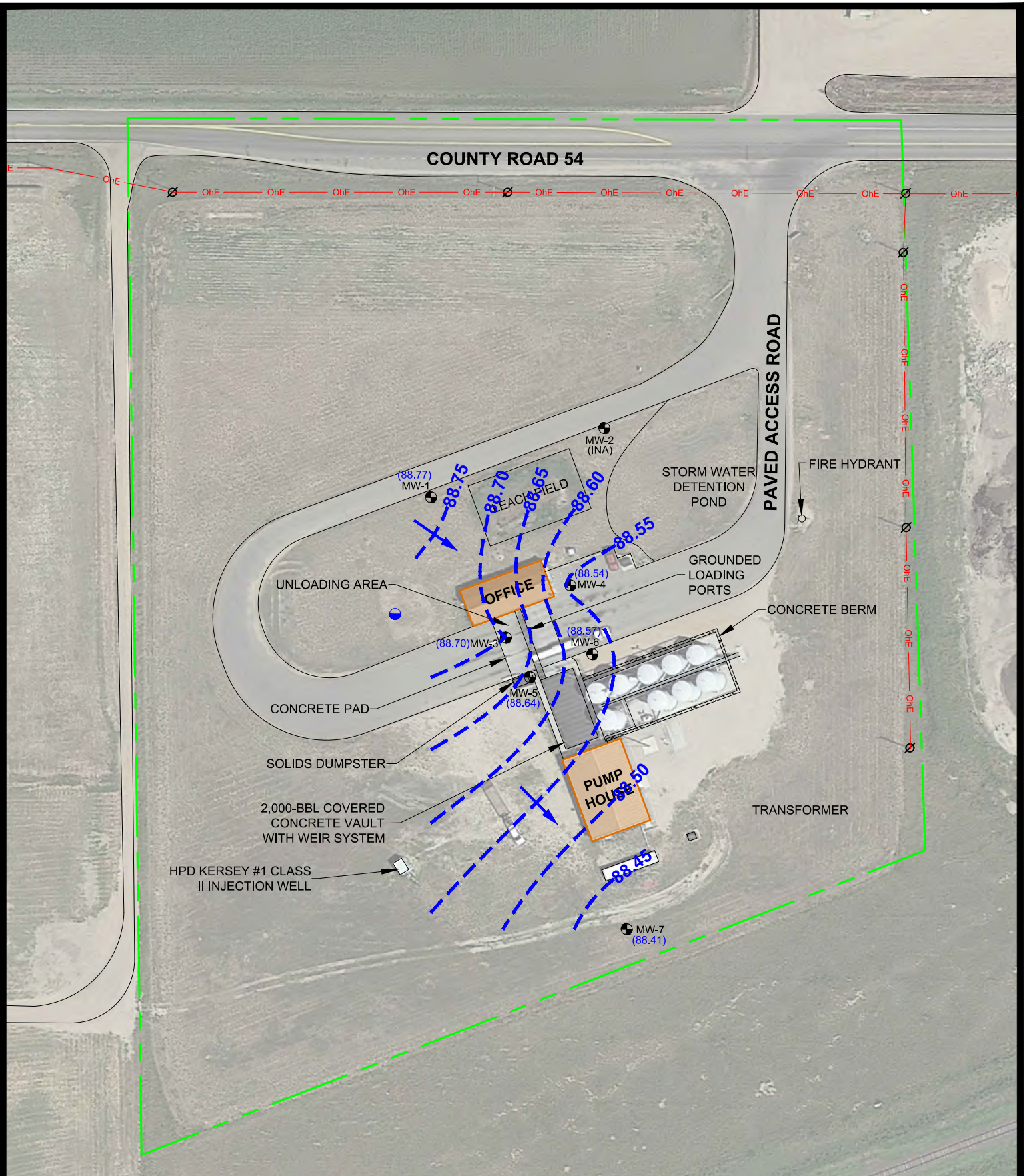
PROJECT:
1-12456-18304aa

DATE:
7/26/2021

DRAFT:
CLB

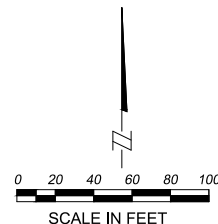
REVIEW:





LEGEND

- MW-1 MONITORING WELL
- DOMESTIC WATER WELL
- (88.77) GROUNDWATER ELEVATION (FEET)
- OVERHEAD ELECTRIC
- APPROXIMATE PROPERTY BOUNDARY
- GROUNDWATER ELEVATION CONTOUR
- INFERRED FLOW DIRECTION
- ∅ UTILITY POLE
- (INA) INACCESSIBLE



GROUNDWATER ELEVATION MAP

July 8, 2021

EXPEDITION WATER SOLUTIONS

EWS #13

23360 COUNTY ROAD 54

GREELEY, COLORADO 80631

PROJECT:
1-12456-18304aa

DATE:
7/26/2021

DRAFT:
CLB

REVIEW:





Table 1

Groundwater Elevation and Analytical Data

Table 1

Groundwater Elevation and Analytical Data

Groundwater Monitoring Report

Expedition Water Solutions - EWS #13

23360 County Road 54, Greeley, CO 80631

Sample ID	Sample Date	Reference Elevation	Depth To Water	Groundwater Elevation	Benzene	Toluene	Ethyl-Benzene	Xylenes	Chloride	Sulfate	TDS	Temperature	Specific Conductance	Dissolved Oxygen	pH	ORP
		(ft)	(ft)	(ft)	(mg/L)	(mg/L)	(mg/L)	(mg/L)	(mg/L)	(mg/L)	(mg/L)	(°C)	(µS/cm)	(mg/L)		(mV)
MAC					0.005	1	0.7	10	1.25 x BG	1.25 x BG	1.25 x BG					
MDL					0.001	0.001	0.001	0.001	1	0.5	5					
MW-1	1/26/2016	96.10	5.66	90.44	<0.001	<0.001	<0.001	<0.001	298	733	2,280	10.13	2,690		7.18	
MW-1	7/26/2016	96.10	4.24	91.86	<0.001	<0.001	<0.001	<0.001	308	845	2,530	17.01	3,322		7.15	
MW-1	1/30/2017	96.10	6.75	89.35	<0.001	<0.001	<0.001	<0.001	340	1,050	1,830	11.74	3,039		7.06	
MW-1	7/24/2017	96.10	4.24	91.86	<0.001	<0.001	<0.001	<0.002	225	617	1,740	16.88	3,289		7.10	
MW-1	1/29/2018	96.10	6.30	89.80	<0.001	<0.001	<0.001	<0.002	382	993	2,320	9.62	3,033		8.50	
MW-1	7/24/2018	96.10	4.95	91.15	<0.001	<0.001	<0.001	<0.002	373	900	1,660	17.95	2,636		7.81	
MW-1	1/30/2019	96.10	6.73	89.37	<0.001	<0.001	<0.001	<0.002	1,280	3,410	1,480	9.40	3,023		7.45	
MW-1	7/29/2019	96.10	5.01	91.09	<0.001	<0.001	<0.001	<0.002	274	670	1,440	16.00	2,938		5.27	
MW-1	1/8/2020	96.10	5.97	90.13	<0.001	<0.001	<0.001	<0.001	321	802	2,250	10.46	3,194	0.38	7.09	151.1
MW-1	4/28/2020	96.10	9.24	86.86	<0.001	<0.001	<0.001	<0.001	342	821	2,140	9.24	3,388	0.31	7.05	128.5
MW-1	7/15/2020	96.10	7.43	88.67	<0.001	<0.001	<0.001	<0.001	369	923	2,310	16.51	2,637	3.85	7.33	145.9
MW-1	10/13/2020	96.10	4.38	91.72	<0.001	<0.001	<0.001	<0.001	223	548	1,580	15..30	2,599	4.15	7.17	114.2
MW-1	1/13/2021	96.10	6.97	89.13	<0.001	<0.001	<0.001	<0.001	296	715	1,980	10.75	2,753	2.47	7.26	121.6
MW-1	4/15/2021	96.10	9.36	86.74	<0.001	<0.001	<0.001	<0.001	309	753	1,980	7.76	2,671	2.65	7.01	197.3
MW-1	7/8/2021	96.10	7.33	88.77	<0.001	<0.001	<0.001	<0.001	338	927	2,210	15.44	2,967	4.86	7.25	115.2
MW-2	1/26/2016	96.40	6.18	90.22	<0.001	<0.001	<0.001	<0.001	330	801	2,250	10.21	2,780		7.03	
MW-2	7/26/2016	96.40	4.60	91.80	<0.001	<0.001	<0.001	<0.001	292	743	2,330	14.80	3,020		7.14	
MW-2	1/30/2017	96.40	7.31	89.09	<0.001	<0.001	<0.001	<0.001	379	1,200	1,890	11.44	3,152		7.01	
MW-2	7/24/2017	96.40	4.49	91.91	<0.001	<0.001	<0.001	<0.002	228	593	1,780	18.37	1,618		7.13	
MW-2	1/29/2018	96.40	6.86	89.54	<0.001	<0.001	<0.001	<0.002	402	1,090	2,560	10.86	3,322		8.77	
MW-2	7/24/2018	96.40	5.24	91.16	<0.001	<0.001	<0.001	<0.002	406	967	1,720	17.18	2,692		7.74	
MW-2	1/30/2019	96.40	4.27	92.13	<0.001	<0.001	<0.001	<0.002	1,220	3,230	1,500	10.57	3,114		7.43	
MW-2	7/29/2019	96.40	5.40	91.00	<0.001	<0.001	<0.001	<0.002	299	692	1,450	15.32	3,028		5.45	
MW-2	1/8/2020	96.40	6.51	89.89	<0.001	<0.001	<0.001	<0.001	322	851	2,410	11.06	3,302	1.95	7.06	132.0
MW-2	4/28/2020	96.40	9.15	87.25	<0.001	<0.001	<0.001	<0.001	355	831	2,120	9.84	3,475	3.06	6.90	137.5
MW-2	7/15/2020	96.40	7.83	88.57	<0.001	<0.001	<0.001	<0.001	380	953	2,320	16.73	2,766	5.64	7.44	151.0
MW-2	10/13/2020	96.40	4.83	91.57	<0.001	<0.001	<0.001	<0.001	156	411	1,220	15.71	1,922	4.76	7.21	114.5
MW-2	1/13/2021	96.40	7.52	88.88	<0.001	<0.001	<0.001	<0.001	306	749	2,080	11.40	2,986	5.28	7.19	115.8
MW-2	4/15/2021	96.40	9.89	86.51	<0.001	<0.001	<0.001	<0.001	314	767	2,070	8.43	3,125	3.27	7.01	197.4
MW-2	7/8/2021	96.40	INA													
MW-3	1/26/2016	99.00	8.41	90.59	<0.001	<0.001	<0.001	<0.001	335	734	2,310	10.90	2,775		7.28	
MW-3	7/26/2016	99.00	7.14	91.86	<0.001	<0.001	<0.001	<0.001	298	758	2,410	14.39	3,157		7.10	
MW-3	1/30/2017	99.00	9.54	89.46	<0.001	<0.001	<0.001	<0.001	286	1,090	1,800	11.32	2,963		7.06	
MW-3	7/24/2017	99.00	7.20	91.80	<0.001	<0.001	<0.001	<0.002	235	592	1,800	14.20	3,147		7.07	
MW-3	1/29/2018	99.00	9.10	89.90	<0.001	<0.001	<0.001	<0.002	435	1,210	2,270	10.30	3,060		8.76	
MW-3	7/24/2018	99.00	7.78	91.22	<0.001	<0.001	<0.001	<0.002	382	902	1,690	15.15	2,479		7.67	
MW-3	1/30/2019	99.00	9.51	89.49	<0.001	<0.001	<0.001	<0.002	1,230	3,180	1,570	10.28	3,173		7.29	
MW-3	7/29/2019	99.00	7.99	91.01	<0.001	<0.001	<0.001	<0.002	248	620	1,140	13.62	2,938		7.32	
MW-3	1/8/2020	99.00	8.75	90.25	<0.001	<0.001	<0.001	<0.001	340	853	2,320	10.31	3,296	0.50	7.11	168.8
MW-3	4/28/2020	99.00	11.40	87.60	<0.001	<0.001	<0.001	<0.001	357	803	2,120	9.48	3,451	0.21	7.05	117.0
MW-3	7/15/2020	99.00	9.50	89.50	<0.001	<0.001	<0.001	<0.001	375	938	2,300	14.99	2,532	2.50	7.37	150.8
MW-3	10/13/2020	99.00	7.25	91.75	<0.001	<0.001	<0.001	<0.001	248	613	1,770	16.79	3,034	2.95	7.31	120.1
MW-3	1/13/2021	99.00	9.77	89.23	<0.001	<0.001	<0.001	<0.001	302	741	2,070	11.55	2,885	2.70	6.95	91.2
MW-3	4/15/2021	99.00	12.13	86.87	<0.001	<0.001	<0.001	<0.001	318	762	2,000	8.84	3,113	2.09	7.07	178.0
MW-3	7/8/2021	99.00	10.30	88.70	<0.001	<0.001	<0.001	<0.001	325	821	2,070	14.52	2,878	4.18	7.29	112.1
MW-4	1/26/2016	98.70	8.33	90.37	<0.001	<0.001	<0.001	<0.001	322	751	2,250	11.70	2,718		7.29	
MW-4	7/26/2016	98.70	6.97	91.73	<0.001	<0.001	<0.001	<0.001	302	722	2,190	13.80	2,901		7.31	
MW-4	1/30/2017	98.70	9.44	89.26	<0.001	<0.001	<0.001	<0.001	352	1,100	1,770	12.07	2,872		7.12	

Table 1

Groundwater Elevation and Analytical Data

Groundwater Monitoring Report

Expedition Water Solutions - EWS #13

23360 County Road 54, Greeley, CO 80631

MW-4	7/24/2017	98.70	6.98	91.72	<0.001	<0.001	<0.001	<0.002	248	620	1,770	13.50	2,909		7.27	
MW-4	1/29/2018	98.70	8.98	89.72	<0.001	<0.001	<0.001	<0.002	428	1,180	2,400	11.20	3,138		8.40	
MW-4	7/24/2018	98.70	8.10	90.60	0.0017	0.0015	<0.001	<0.002	439	1,020	1,730	15.42	2,484		7.62	
MW-4	1/30/2019	98.70	9.41	89.29	<0.001	<0.001	<0.001	<0.002	1,300	3,340	1,580	10.78	3,220		7.31	
MW-4	7/29/2019	98.70	7.82	90.88	<0.001	<0.001	<0.001	<0.002	276	670	1,450	12.64	3,013		6.98	
MW-4	1/8/2020	98.70	8.65	90.05	<0.001	<0.001	<0.001	<0.001	330	818	2,280	11.94	3,182	0.16	7.04	174.8
MW-4	4/28/2020	98.70	11.29	87.41	<0.001	<0.001	<0.001	<0.001	308	232	2,180	9.61	3,522	0.09	6.97	114.8
MW-4	7/15/2020	98.70	9.28	89.42	<0.001	<0.001	<0.001	<0.001	373	949	2,310	15.09	2,515	2.36	7.26	152.1
MW-4	10/13/2020	98.70	7.11	91.59	<0.001	<0.001	<0.001	<0.001	237	590	1,630	16.46	2,821	2.52	7.24	115.9
MW-4	1/13/2021	98.70	9.68	89.02	<0.001	<0.001	<0.001	<0.001	318	770	2,110	11.64	3,053	3.86	7.07	103.2
MW-4	4/15/2021	98.70	12.03	86.67	<0.001	<0.001	<0.001	<0.001	322	766	2,010	8.74	2,833	2.37	7.05	183.1
MW-4	7/8/2021	98.70	10.16	88.54	<0.001	<0.001	<0.001	<0.001	316	786	2,000	14.03	2,682	3.55	7.29	110.5
MW-5	1/26/2016	99.00	8.41	90.59	<0.001	<0.001	<0.001	<0.001	313	722	2,110	9.31	2,658		7.20	
MW-5	4/26/2016	99.00	10.07	88.93	<0.001	<0.001	<0.001	<0.001	371	725	2,290	8.33	2,991		6.68	
MW-5	7/26/2016	99.00	7.16	91.84	<0.001	<0.001	<0.001	<0.001	270	650	2,250	15.29	2,939		7.21	
MW-5	10/31/2016	99.00	6.87	92.13	<0.001	<0.001	<0.001	<0.001	382	1,050	1,800	16.20	3,364		7.39	
MW-5	1/30/2017	99.00	9.50	89.50	<0.001	<0.001	<0.001	<0.001	362	1,070	1,760	11.29	2,960		7.09	
MW-5	4/27/2017	99.00	11.21	87.79	<0.001	<0.001	<0.001	<0.002	423	933	2,410	8.95	3,146		7.26	
MW-5	7/24/2017	99.00	7.22	91.78	<0.001	<0.001	<0.001	<0.002	207	498	1,780	14.65	2,950		7.17	
MW-5	10/27/2017	99.00	5.48	93.52	<0.001	<0.001	<0.001	<0.002	283	830	2,510	14.81	3,317		7.68	
MW-5	1/29/2018	99.00	9.09	89.91	<0.001	<0.001	<0.001	<0.002	454	1,270	2,460	9.78	3,243		8.30	
MW-5	4/12/2018	99.00	11.00	88.00	<0.001	<0.001	<0.001	<0.002	362	1,100	2,570	8.41	3,337		7.34	
MW-5	7/24/2018	99.00	8.00	91.00	0.0012	<0.001	<0.001	<0.002	505	1,160	1,780	15.96	2,648		7.64	
MW-5	10/29/2018	99.00	6.10	92.90	<0.001	<0.001	<0.001	<0.002	316	683	1,720	16.21	3,061		7.26	
MW-5	1/30/2019	99.00	9.46	89.54	0.0019	0.0021	<0.001	<0.002	1,130	2,910	1,580	10.27	3,190		7.70	
MW-5	4/29/2019	99.00	11.30	87.70	<0.001	<0.001	<0.001	<0.002	227	488	1,580	7.41	3,240		7.19	
MW-5	7/29/2019	99.00	8.03	90.97	<0.001	<0.001	<0.001	<0.002	< 6.00	319	1,400	13.55	2,935		7.33	
MW-5	1/8/2020	99.00	8.71	90.29	<0.001	<0.001	<0.001	<0.001	336	836	2,310	10.66	3,301	0.71	7.08	172.5
MW-5	4/28/2020	99.00	11.35	87.65	<0.001	<0.001	<0.001	<0.001	367	829	2,200	8.88	3,538	1.66	6.99	123.0
MW-5	7/15/2020	99.00	9.60	89.40	<0.001	<0.001	<0.001	<0.001	346	831	2,220	15.94	2,506	1.24	7.01	146.8
MW-5	10/13/2020	99.00	7.25	91.75	0.0016	0.0016	<0.001	<0.001	284	693	1,880	15.39	3,203	3.79	7.13	116.6
MW-5	1/13/2021	99.00	9.74	89.26	<0.001	<0.001	<0.001	<0.001	306	755	2,040	11.41	2,946	3.76	6.96	69.3
MW-5	4/15/2021	99.00	12.08	86.92	<0.001	<0.001	<0.001	<0.001	331	790	2,100	7.78	3,239	3.33	7.06	168.5
MW-5	7/8/2021	99.00	10.36	88.64	<0.001	<0.001	<0.001	<0.001	305	720	2,000	14.64	2,715	3.08	7.25	104.1
MW-6	1/26/2016	98.80	8.28	90.52	0.0039	0.0022	<0.001	<0.001	312	718	2,250	11.78	2,692		7.24	
MW-6	4/26/2016	98.80	9.98	88.82	<0.001	<0.001	<0.001	<0.001	371	751	2,200	9.80	3,059		7.45	
MW-6	7/26/2016	98.80	7.00	91.80	<0.001	<0.001	<0.001	<0.001	264	550	2,340	13.40	3,068		7.16	
MW-6	10/31/2016	98.80	6.72	92.08	<0.001	<0.001	<0.001	<0.001	60	204	1,700	15.38	3,283		7.38	
MW-6	1/30/2017	98.80	9.42	89.38	0.0018	0.0018	<0.001	<0.001	387	1,110	1,780	12.26	2,957		7.17	
MW-6	4/27/2017	98.80	11.12	87.68	<0.001	<0.001	<0.001	<0.002	358	812	2,350	10.69	3,030		7.35	
MW-6	7/24/2017	98.80	7.03	91.77	<0.001	<0.001	<0.001	<0.002	236	564	1,800	13.18	3,014		7.09	
MW-6	10/27/2017	98.80	5.38	93.42	0.0019	0.0012	<0.001	<0.002	69	167	2,510	16.91	3,338		7.73	
MW-6	1/29/2018	98.80	9.00	89.80	<0.001	<0.001	<0.001	<0.002	526	1,470	2,510	13.65	3,294		8.45	
MW-6	4/12/2018	98.80	10.97	87.83	<0.001	<0.001	<0.001	<0.002	390	1,130	2,540	11.86	3,347		7.27	
MW-6	7/24/2018	98.80	7.92	90.88	0.015	0.014	<0.001	0.0028	451	1,070	1,840	16.80	2,790		7.73	
MW-6	10/29/2018	98.80	6.00	92.80	<0.001	<0.001	<0.001	<0.002	269	602	1,720	19.39	3,026		7.26	
MW-6	1/30/2019	98.80	9.38	89.42	0.001	<0.001	<0.001	<0.002	989	2,520	1,560	13.82	3,219		7.30	
MW-6	4/29/2019	98.80	11.24	87.56	<0.001	<0.001	<0.001	<0.002	233	570	1,570	9.66	3,211		7.16	
MW-6	7/29/2019	98.80	7.88	90.92	<0.001	<0.001	<0.001	<0.002	258	647	1,540	14.99	2,999		7.38	
MW-6	1/8/2020	98.80	8.64	90.16	<0.001	<0.001	<0.001	<0.001	331	821	2,340	12.38	3,299	0.65	7.04	173.2
MW-6	4/28/2020	98.80	11.28	87.52	<0.001	<0.001	<0.001	<0.001	358	804	2,170	10.42	3,482	1.24	6.93	113.5
MW-6	7/15/2020	98.80	9.40	89.40	Unable to Perform Groundwater Monitoring Due to Obstruction in Well											
MW-6	10/13/2020	98.80	7.13	91.67	<0.001	<0.001	<0.001	<0.001	263	673	1,910	14.85	3,355	3.14	7.28	121.0
MW-6	1/13/2021	98.80	9.64	89.16	<0.001	<0.001	<0.001	<0.001	313	771	2,100	11.80	2,909	2.19	7.11	111.3
MW-6	4/15/2021	98.80	12.02	86.78	<0.001	<0.001	<0.001	<0.001	335	791	2,080	8.66	2,936	2.54	7.01	191.1
MW-6	7/8/2021	98.80	10.23	88.57	<0.001	<0.001	<0.001	<0.001	344	821	2,110	14.58	2,677	3.66	7.22	109.3

Table 1

Groundwater Elevation and Analytical Data

Groundwater Monitoring Report

Expedition Water Solutions - EWS #13

23360 County Road 54, Greeley, CO 80631

MW-7	7/26/2016	95.20	3.45	91.75	<0.001	<0.001	<0.001	<0.001	306	674	2,630	13.50	3,424		6.60	
MW-7	1/30/2017	95.20	5.43	89.77	<0.001	<0.001	<0.001	<0.001	318	988	1,730	8.60	2,912		6.85	
MW-7	7/24/2017	95.20	3.68	91.52	<0.001	<0.001	<0.001	<0.002	267	573	1,800	13.92	3,475		6.60	
MW-7	1/29/2018	95.20	5.02	90.18	<0.001	<0.001	<0.001	<0.002	576	1,440	2,610	8.34	3,403		8.91	
MW-7	7/24/2018	95.20	4.75	90.45	<0.001	<0.001	<0.001	<0.002	400	851	1,850	13.95	2,630		8.12	
MW-7	1/30/2019	95.20	5.39	89.81	<0.001	<0.001	<0.001	<0.002	835	1,900	1,640	7.92	3,361		7.36	
MW-7	7/29/2019	95.20	4.39	90.81	<0.001	<0.001	<0.001	<0.002	210	541	1,590	13.12	3,216		7.44	
MW-7	1/8/2020	95.20	4.65	90.55	<0.001	<0.001	<0.001	<0.001	358	808	2,200	9.42	3,238	0.16	7.04	96.1
MW-7	4/28/2020	95.20	7.28	87.92	<0.001	<0.001	<0.001	<0.001	398	870	2,310	10.70	3,597	0.00	6.22	158.1
MW-7	7/15/2020	95.20	6.22	88.98	<0.001	<0.001	<0.001	<0.001	450	986	2,320	16.50	2,625	0.41	6.76	170.1
MW-7	10/13/2020	95.20	3.41	91.79	<0.001	<0.001	<0.001	<0.001	343	795	2,200	14.17	3,627	1.06	7.39	125.5
MW-7	1/13/2021	95.20	5.67	89.53	<0.001	<0.001	<0.001	<0.001	336	809	2,180	11.53	3,007	2.95	7.08	7.8
MW-7	4/15/2021	95.20	8.01	87.19	<0.001	<0.001	<0.001	<0.001	397	866	2,310	8.72	3,392	0.73	7.04	140.9
MW-7	7/8/2021	95.20	6.79	88.41	<0.001	<0.001	<0.001	<0.001	357	1,010	2,010	14.15	2,416	2.69	7.34	102.8

Notes

A blank data box indicates that the analysis or measurement was not completed during the specified monitoring event.

Organic data in bold text indicate concentrations in excess of COGCC MACs.

The terms, "MAC" and "1.25 x BG", originating from COGCC Table 910-1, address groundwater monitoring wells and do not apply to sub sump locations.

Acronyms used in Table 1 are drawn from this list as needed

BG = Background

COGCC = Colorado Oil and Gas Conservation Commission

DRY = No liquid discovered at the specific sampling point

INA = Inaccessible

MAC = COGCC Maximum Allowable Concentration; as indicated, or 1.25 times background concentration levels

MDL = Laboratory Method Detection Limit

ORP = Oxidation Reduction Potential

TDS = Total Dissolved Solids



Attachment A

Groundwater Laboratory Report and Chain of Custody Documentation



July 20, 2021

CGRS, Inc

Drezden Kinnaird

1301 Academy Court

Fort Collins CO 80524

Project Name - EWS #13

Project Number - 18304aa

Attached are your analytical results for EWS #13 received by Origins Laboratory, Inc. July 09, 2021. This project is associated with Origins project number Y107200-01.

The analytical results in the following report were analyzed under the guidelines of EPA Methods. These methods are identified as follows; "SW" are defined in SW-846, "EPA" are defined in 40CFR part 136 and "SM" are defined in the most current revision of Standard Methods For the Examination of Water and Wastewater.

The analytical results apply specifically to the samples and analyses specified per the attached Chain of Custody. As such, this report shall not be reproduced except in full, without the written approval of Origin's laboratory.

Unless otherwise noted, the analytical results for all soil samples are reported on a wet weight basis. All analytical analyses were performed under NELAP guidelines unless noted by a data qualifier.

Any holding time exceedances, deviations from the method specifications or deviations from Origins Laboratory's Standard Operating Procedures are outlined in the case narrative.

Thank you for selecting Origins for your analytical needs. Please contact us with any questions concerning this report, or if we can help with anything at all.

Origins Laboratory, Inc.
303.433.1322
o-squad@oelabinc.com



1725 Elk Place, Denver, CO 80211 | Phone: 303.433.1322 | Fax: 303.265.9645

CGRS, Inc
1301 Academy Court
Fort Collins CO 80524

Drezden Kinnaird
Project Number: 18304aa
Project: EWS #13

CROSS REFERENCE REPORT

Sample ID	Laboratory ID	Matrix	Date Sampled	Date Received
MW-1	Y107200-01	Water	July 8, 2021 9:30	07/09/2021 09:25
MW-3	Y107200-02	Water	July 8, 2021 10:30	07/09/2021 09:25
MW-4	Y107200-03	Water	July 8, 2021 11:00	07/09/2021 09:25
MW-5	Y107200-04	Water	July 8, 2021 11:30	07/09/2021 09:25
MW-6	Y107200-05	Water	July 8, 2021 12:00	07/09/2021 09:25
MW-7	Y107200-06	Water	July 8, 2021 12:30	07/09/2021 09:25

Origins Laboratory, Inc.



The results in this report apply to the samples analyzed in accordance with the chain of custody document. This analytical report must be reproduced in its entirety.

CGRS, Inc
1301 Academy Court
Fort Collins CO 80524

Drezden Kinnaird
Project Number: 18304aa
Project: EWS #13

ORIGINS

LABORATORY, INC

www.originslaboratory.com

4107200

page 1 of 1

Client: CGRS
Address: 1301 Academy Ct.
Telephone Number: 970-493-7780
Email Address: jbelanger@cgrs.com, dkinnaird@cgrs.com

Project Manager: Drezden Kinnaird
Project Name: EWS #13
Project Number: 18304aa
Samples Collected By: jbelanger@cgrs.com, dkinnaird@cgrs.com

Fax: 303.265.9645

Sample ID Description	Date Sampled	Time Sampled	# of Containers	Preservative				Matrix			Analysis	Sample Instructions
				Unpreserved	HCl	HNO ₃	Other	Groundwater	Soil	Air Summa Canister #		
MW-1	7-8-21	0930	64	X				X			X	1
MW-2	N/A	N/A	64	X				X				2
MW-3	7-8-21	1030	64	X				X			X	3
MW-4	7-8-21	1100	64	X				X			X	4
MW-5	7-8-21	1130	64	X				X			X	5
MW-6	7-8-21	1200	64	X				X			X	6
MW-7	7-8-21	1230	64	X				X			X	7
												8
												9
												10
Relinquished By: <i>jbelanger</i>	Date: 7-8-21	Time: 1600						Received By: <i>[Signature]</i>	Date: 7/9/21	Time: 925	Turnaround Time: Same Day <input type="checkbox"/> 24 Hr <input type="checkbox"/> 48 Hr <input type="checkbox"/> Standard <input checked="" type="checkbox"/>	
Relinquished By:	Date:	Time:						Received By:	Date:	Time:		

Date Results Needed

13

Origins Laboratory, Inc.

Jordan A. Merrill

The results in this report apply to the samples analyzed in accordance with the chain of custody document. This analytical report must be reproduced in its entirety.

CGRS, Inc
1301 Academy Court
Fort Collins CO 80524

Drezden Kinnaird
Project Number: 18304aa
Project: EWS #13

Origins Laboratory F-012207-01-R1
Effective Date: 01/09/12

Sample Receipt Checklist

Origins Work Order: Y107200 Client: CGRS
Client Project ID: EWS #13

Checklist Completed by: Jm Shipped Via: HD
Date/time completed: 7-9-21 (UPS, FedEx, Hand Delivered, Pick-up, etc.)
Airbill #: Y17A

Matrix(s) Received: (Check all that apply): Soil/Solid ☒ Water ☐ Other: ☐

Cooler Number/Temperature: 11.3 °C / °C / °C (Describe)

Thermometer ID: T603

Requirement Description	Yes	No	N/A	Comments (if any)
If samples require cooling, was the temperature between 0°C to ≤ 6°C ⁽¹⁾ ?	<input checked="" type="checkbox"/>	<input type="checkbox"/>	<input type="checkbox"/>	
Is there ice present (document if blue ice is used)	<input checked="" type="checkbox"/>	<input type="checkbox"/>	<input type="checkbox"/>	
Are custody seals present on cooler? (if so, document in comments if they are signed and dated, broken or intact)	<input type="checkbox"/>	<input checked="" type="checkbox"/>	<input type="checkbox"/>	
Are custody seals present on each sample container? (if so, document in comments if they are signed and dated, broken or intact)	<input type="checkbox"/>	<input checked="" type="checkbox"/>	<input type="checkbox"/>	
Were all samples received intact ⁽¹⁾ ?	<input checked="" type="checkbox"/>	<input type="checkbox"/>	<input type="checkbox"/>	
Was adequate sample volume provided ⁽¹⁾ ?	<input checked="" type="checkbox"/>	<input type="checkbox"/>	<input type="checkbox"/>	
Are short holding time analytes or samples with HTs due within 48 hours present ⁽¹⁾ ?	<input type="checkbox"/>	<input checked="" type="checkbox"/>	<input type="checkbox"/>	
Is a chain-of-custody (COC) present and filled out completely ⁽¹⁾ ?	<input checked="" type="checkbox"/>	<input type="checkbox"/>	<input type="checkbox"/>	
Does the COC agree with the number and type of sample bottles received ⁽¹⁾ ?	<input checked="" type="checkbox"/>	<input type="checkbox"/>	<input type="checkbox"/>	
Do the sample IDs on the bottle labels match the COC ⁽¹⁾ ?	<input checked="" type="checkbox"/>	<input type="checkbox"/>	<input type="checkbox"/>	
Is the COC properly relinquished by the client with date and time recorded ⁽¹⁾ ?	<input checked="" type="checkbox"/>	<input type="checkbox"/>	<input type="checkbox"/>	
For volatiles in water – is there headspace (> ¼ inch bubble) present? If yes, contact client and note in narrative.	<input type="checkbox"/>	<input checked="" type="checkbox"/>	<input type="checkbox"/>	
Are samples preserved that require preservation and was it checked ⁽¹⁾ ? (note ID of confirmation instrument used in comments) / (preservation is not confirmed for subcontracted analyses in order to insure sample integrity)/(pH <2 for samples preserved with HNO ₃ , HCL, H ₂ SO ₄) / (pH >10 for samples preserved with NaAsO ₂ +NaOH, ZnAc+NaOH)	<input type="checkbox"/>	<input checked="" type="checkbox"/>	<input type="checkbox"/>	
Additional Comments (if any):				

⁽¹⁾ If NO, then contact the client before proceeding with analysis and note date/time and person contacted as well as the corrective action to in the additional comments (above) and the case narrative.

Reviewed by (Project Manager) Jm Date/Time Reviewed 7/12/21

Origins Laboratory, Inc.

Jm

The results in this report apply to the samples analyzed in accordance with the chain of custody document. This analytical report must be reproduced in its entirety.

CGRS, Inc
1301 Academy Court
Fort Collins CO 80524

Drezden Kinnaird
Project Number: 18304aa
Project: EWS #13

MW-1

7/8/2021 9:30:00AM

Analyte	Result	Reporting Limit	Units	Dilution	Batch	Analyst	Prepared	Analyzed	Notes
---------	--------	-----------------	-------	----------	-------	---------	----------	----------	-------

Origins Laboratory, Inc. Y107200-01 (Water)

Anions by IC 300.0

Chloride	338	31.2	mg/L	125	B1G1420	JMA	07/14/2021	07/15/2021	
Sulfate	927	31.2	"	"	"	JMA	"	"	

BTEX by EPA 8260D


Benzene	ND	0.00100	mg/L	1	B1G1204	KDK	07/12/2021	07/13/2021	U
Toluene	ND	0.00100	"	"	"	KDK	"	"	U
Ethylbenzene	ND	0.00100	"	"	"	KDK	"	"	U
Xylenes, total	ND	0.00100	"	"	"	KDK	"	"	U

Surrogate: 1,2-Dichloroethane-d4	104 %	70-130			"	"	"	
Surrogate: Toluene-d8	98.7 %	70-130			"	"	"	
Surrogate: 4-Bromofluorobenzene	93.1 %	70-130			"	"	"	

Total Dissolved Solids by 2540C

Total Dissolved Solids	2210	5.00	mg/L	1	B1G1315	SCL	07/13/2021	07/14/2021	
------------------------	------	------	------	---	---------	-----	------------	------------	--

Origins Laboratory, Inc.



The results in this report apply to the samples analyzed in accordance with the chain of custody document. This analytical report must be reproduced in its entirety.

CGRS, Inc
1301 Academy Court
Fort Collins CO 80524

Drezden Kinnaird
Project Number: 18304aa
Project: EWS #13

MW-3

7/8/2021 10:30:00AM

Analyte	Result	Reporting Limit	Units	Dilution	Batch	Analyst	Prepared	Analyzed	Notes
---------	--------	-----------------	-------	----------	-------	---------	----------	----------	-------

Origins Laboratory, Inc. Y107200-02 (Water)

Anions by IC 300.0

Chloride	325	31.2	mg/L	125	B1G1420	JMA	07/14/2021	07/15/2021	
Sulfate	821	31.2	"	"	"	JMA	"	"	

BTEX by EPA 8260D

Benzene	ND	0.00100	mg/L	1	B1G1204	KDK	07/12/2021	07/13/2021	U
Toluene	ND	0.00100	"	"	"	KDK	"	"	U
Ethylbenzene	ND	0.00100	"	"	"	KDK	"	"	U
Xylenes, total	ND	0.00100	"	"	"	KDK	"	"	U

Surrogate: 1,2-Dichloroethane-d4	105 %	70-130			"	"	"	
Surrogate: Toluene-d8	101 %	70-130			"	"	"	
Surrogate: 4-Bromofluorobenzene	90.9 %	70-130			"	"	"	

Total Dissolved Solids by 2540C

Total Dissolved Solids	2070	5.00	mg/L	1	B1G1315	SCL	07/13/2021	07/14/2021	
------------------------	------	------	------	---	---------	-----	------------	------------	--

Origins Laboratory, Inc.



The results in this report apply to the samples analyzed in accordance with the chain of custody document. This analytical report must be reproduced in its entirety.

CGRS, Inc
1301 Academy Court
Fort Collins CO 80524

Drezden Kinnaird
Project Number: 18304aa
Project: EWS #13

MW-4

7/8/2021 11:00:00AM

Analyte	Result	Reporting Limit	Units	Dilution	Batch	Analyst	Prepared	Analyzed	Notes
---------	--------	-----------------	-------	----------	-------	---------	----------	----------	-------

Origins Laboratory, Inc. Y107200-03 (Water)

Anions by IC 300.0

Chloride	316	31.2	mg/L	125	B1G1420	JMA	07/14/2021	07/15/2021	
Sulfate	786	31.2	"	"	"	JMA	"	"	

BTEX by EPA 8260D

Benzene	ND	0.00100	mg/L	1	B1G1204	KDK	07/12/2021	07/13/2021	U
Toluene	ND	0.00100	"	"	"	KDK	"	"	U
Ethylbenzene	ND	0.00100	"	"	"	KDK	"	"	U
Xylenes, total	ND	0.00100	"	"	"	KDK	"	"	U

Surrogate: 1,2-Dichloroethane-d4	106 %	70-130			"	"	"	
Surrogate: Toluene-d8	98.5 %	70-130			"	"	"	
Surrogate: 4-Bromofluorobenzene	89.9 %	70-130			"	"	"	

Total Dissolved Solids by 2540C

Total Dissolved Solids	2000	5.00	mg/L	1	B1G1315	SCL	07/13/2021	07/14/2021	
------------------------	------	------	------	---	---------	-----	------------	------------	--

Origins Laboratory, Inc.



The results in this report apply to the samples analyzed in accordance with the chain of custody document. This analytical report must be reproduced in its entirety.

CGRS, Inc
1301 Academy Court
Fort Collins CO 80524

Drezden Kinnaird
Project Number: 18304aa
Project: EWS #13

MW-5

7/8/2021 11:30:00AM

Analyte	Result	Reporting Limit	Units	Dilution	Batch	Analyst	Prepared	Analyzed	Notes
---------	--------	-----------------	-------	----------	-------	---------	----------	----------	-------

Origins Laboratory, Inc. Y107200-04 (Water)

Anions by IC 300.0

Chloride	305	31.2	mg/L	125	B1G1525	Analy	07/15/2021	07/19/2021	
Sulfate	720	31.2	"	"	"	Analy	"	"	

BTEX by EPA 8260D

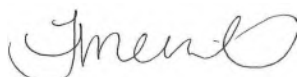
Benzene	ND	0.00100	mg/L	1	B1G1204	KDK	07/12/2021	07/13/2021	U
Toluene	ND	0.00100	"	"	"	KDK	"	"	U
Ethylbenzene	ND	0.00100	"	"	"	KDK	"	"	U
Xylenes, total	ND	0.00100	"	"	"	KDK	"	"	U

Surrogate: 1,2-Dichloroethane-d4	105 %	70-130			"	"	"	
Surrogate: Toluene-d8	99.3 %	70-130			"	"	"	
Surrogate: 4-Bromofluorobenzene	91.5 %	70-130			"	"	"	

Total Dissolved Solids by 2540C

Total Dissolved Solids	2000	5.00	mg/L	1	B1G1315	SCL	07/13/2021	07/14/2021	
------------------------	------	------	------	---	---------	-----	------------	------------	--

Origins Laboratory, Inc.



The results in this report apply to the samples analyzed in accordance with the chain of custody document. This analytical report must be reproduced in its entirety.

CGRS, Inc
1301 Academy Court
Fort Collins CO 80524

Drezden Kinnaird
Project Number: 18304aa
Project: EWS #13

MW-6

7/8/2021 12:00:00PM

Analyte	Result	Reporting Limit	Units	Dilution	Batch	Analyst	Prepared	Analyzed	Notes
---------	--------	-----------------	-------	----------	-------	---------	----------	----------	-------

Origins Laboratory, Inc. Y107200-05 (Water)

Anions by IC 300.0

Chloride	344	31.2	mg/L	125	B1G1525	Analy	07/15/2021	07/17/2021	
Sulfate	821	31.2	"	"	"	Analy	"	"	

BTEX by EPA 8260D

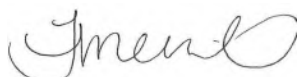
Benzene	ND	0.00100	mg/L	1	B1G1204	KDK	07/12/2021	07/13/2021	U
Toluene	ND	0.00100	"	"	"	KDK	"	"	U
Ethylbenzene	ND	0.00100	"	"	"	KDK	"	"	U
Xylenes, total	ND	0.00100	"	"	"	KDK	"	"	U

Surrogate: 1,2-Dichloroethane-d4	106 %	70-130			"	"	"	
Surrogate: Toluene-d8	99.2 %	70-130			"	"	"	
Surrogate: 4-Bromofluorobenzene	90.0 %	70-130			"	"	"	

Total Dissolved Solids by 2540C

Total Dissolved Solids	2110	5.00	mg/L	1	B1G1315	SCL	07/13/2021	07/14/2021	
------------------------	------	------	------	---	---------	-----	------------	------------	--

Origins Laboratory, Inc.



The results in this report apply to the samples analyzed in accordance with the chain of custody document. This analytical report must be reproduced in its entirety.

CGRS, Inc
1301 Academy Court
Fort Collins CO 80524

Drezden Kinnaird
Project Number: 18304aa
Project: EWS #13

MW-7

7/8/2021 12:30:00PM

Analyte	Result	Reporting Limit	Units	Dilution	Batch	Analyst	Prepared	Analyzed	Notes
---------	--------	-----------------	-------	----------	-------	---------	----------	----------	-------

Origins Laboratory, Inc.
Y107200-06 (Water)

Anions by IC 300.0

Chloride	357	31.2	mg/L	125	B1G1525	Analy	07/15/2021	07/17/2021	
Sulfate	1010	31.2	"	"	"	Analy	"	"	

BTEX by EPA 8260D

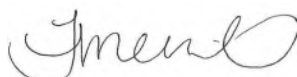
Benzene	ND	0.00100	mg/L	1	B1G1204	KDK	07/12/2021	07/13/2021	U
Toluene	ND	0.00100	"	"	"	KDK	"	"	U
Ethylbenzene	ND	0.00100	"	"	"	KDK	"	"	U
Xylenes, total	ND	0.00100	"	"	"	KDK	"	"	U

Surrogate: 1,2-Dichloroethane-d4	104 %	70-130			"	"	"	
Surrogate: Toluene-d8	99.2 %	70-130			"	"	"	
Surrogate: 4-Bromofluorobenzene	90.4 %	70-130			"	"	"	

Total Dissolved Solids by 2540C

Total Dissolved Solids	2010	5.00	mg/L	1	B1G1315	SCL	07/13/2021	07/14/2021	
------------------------	------	------	------	---	---------	-----	------------	------------	--

Origins Laboratory, Inc.



The results in this report apply to the samples analyzed in accordance with the chain of custody document. This analytical report must be reproduced in its entirety.

CGRS, Inc
1301 Academy Court
Fort Collins CO 80524

Drezden Kinnaird
Project Number: 18304aa
Project: EWS #13

Volatile Organic Compounds by GC/MS SW846 8260D - Quality Control
Origins Laboratory, Inc.

Analyte	Result	Reporting Limit	Units	Spike Level	Source Result	%REC	%REC Limits	RPD	RPD Limit	Notes
---------	--------	-----------------	-------	-------------	---------------	------	-------------	-----	-----------	-------


Batch B1G1204 - EPA 5030B (Water)

Blank (B1G1204-BLK1)

Prepared: 07/12/2021 Analyzed: 07/13/2021

Benzene	ND	0.00100	mg/L							U
Toluene	ND	0.00100	"							U
Ethylbenzene	ND	0.00100	"							U
Xylenes, total	ND	0.00100	"							U
Surrogate: 1,2-Dichloroethane-d4	0.066		"	0.0625	105	70-130				
Surrogate: Toluene-d8	0.062		"	0.0625	99.9	70-130				
Surrogate: 4-Bromofluorobenzene	0.057		"	0.0625	91.1	70-130				

Origins Laboratory, Inc.



The results in this report apply to the samples analyzed in accordance with the chain of custody document. This analytical report must be reproduced in its entirety.

CGRS, Inc
1301 Academy Court
Fort Collins CO 80524

Drezden Kinnaird
Project Number: 18304aa
Project: EWS #13

Volatile Organic Compounds by GC/MS SW846 8260D - Quality Control
Origins Laboratory, Inc.

Analyte	Result	Reporting Limit	Units	Spike Level	Source Result	%REC	%REC Limits	RPD	RPD Limit	Notes
---------	--------	-----------------	-------	-------------	---------------	------	-------------	-----	-----------	-------


Batch B1G1204 - EPA 5030B (Water)

LCS (B1G1204-BS1)

Prepared: 07/12/2021 Analyzed: 07/13/2021

Benzene	0.0510	0.00100	mg/L	0.0500		102	70-130			
Toluene	0.0550	0.00100	"	0.0500		110	70-130			
Ethylbenzene	0.0569	0.00100	"	0.0500		114	70-130			
m,p-Xylene	0.112	0.00200	"	0.100		112	70-130			
o-Xylene	0.0536	0.00100	"	0.0500		107	70-130			
Surrogate: 1,2-Dichloroethane-d4	0.061		"	0.0625		98.3	70-130			
Surrogate: Toluene-d8	0.063		"	0.0625		101	70-130			
Surrogate: 4-Bromofluorobenzene	0.062		"	0.0625		99.5	70-130			

Origins Laboratory, Inc.



The results in this report apply to the samples analyzed in accordance with the chain of custody document. This analytical report must be reproduced in its entirety.

CGRS, Inc
1301 Academy Court
Fort Collins CO 80524

Drezden Kinnaird
Project Number: 18304aa
Project: EWS #13


Volatile Organic Compounds by GC/MS SW846 8260D - Quality Control
Origins Laboratory, Inc.

Analyte	Result	Reporting Limit	Units	Spike Level	Source Result	%REC	%REC Limits	RPD	RPD Limit	Notes
---------	--------	-----------------	-------	-------------	---------------	------	-------------	-----	-----------	-------

Batch B1G1204 - EPA 5030B (Water)

Matrix Spike (B1G1204-MS1)		Source: Y107200-01			Prepared: 07/12/2021 Analyzed: 07/13/2021					
Benzene	0.0466	0.00100	mg/L	0.0500	ND	93.2	70-130			
Toluene	0.0486	0.00100	"	0.0500	ND	97.2	70-130			
Ethylbenzene	0.0487	0.00100	"	0.0500	ND	97.5	70-130			
m,p-Xylene	0.0980	0.00200	"	0.100	ND	98.0	70-130			
o-Xylene	0.0512	0.00100	"	0.0500	ND	102	70-130			
Surrogate: 1,2-Dichloroethane-d4	0.063		"	0.0625		101	70-130			
Surrogate: Toluene-d8	0.064		"	0.0625		102	70-130			
Surrogate: 4-Bromofluorobenzene	0.061		"	0.0625		97.8	70-130			

Origins Laboratory, Inc.



The results in this report apply to the samples analyzed in accordance with the chain of custody document. This analytical report must be reproduced in its entirety.

CGRS, Inc
1301 Academy Court
Fort Collins CO 80524

Drezden Kinnaird
Project Number: 18304aa
Project: EWS #13


Volatile Organic Compounds by GC/MS SW846 8260D - Quality Control
Origins Laboratory, Inc.

Analyte	Result	Reporting Limit	Units	Spike Level	Source Result	%REC	%REC Limits	RPD	RPD Limit	Notes
---------	--------	-----------------	-------	-------------	---------------	------	-------------	-----	-----------	-------

Batch B1G1204 - EPA 5030B (Water)

Matrix Spike Dup (B1G1204-MSD1)		Source: Y107200-01			Prepared: 07/12/2021 Analyzed: 07/13/2021					
Benzene	0.0484	0.00100	mg/L	0.0500	ND	96.8	70-130	3.81	20	
Toluene	0.0499	0.00100	"	0.0500	ND	99.8	70-130	2.64	20	
Ethylbenzene	0.0510	0.00100	"	0.0500	ND	102	70-130	4.53	20	
m,p-Xylene	0.102	0.00200	"	0.100	ND	102	70-130	4.04	20	
o-Xylene	0.0529	0.00100	"	0.0500	ND	106	70-130	3.32	20	
Surrogate: 1,2-Dichloroethane-d4	0.063		"	0.0625		100	70-130			
Surrogate: Toluene-d8	0.062		"	0.0625		99.7	70-130			
Surrogate: 4-Bromofluorobenzene	0.061		"	0.0625		98.3	70-130			

Origins Laboratory, Inc.



The results in this report apply to the samples analyzed in accordance with the chain of custody document. This analytical report must be reproduced in its entirety.

CGRS, Inc
1301 Academy Court
Fort Collins CO 80524

Drezden Kinnaird
Project Number: 18304aa
Project: EWS #13

Volatile Organic Compounds by GC/MS SW846 8260D - Quality Control
Origins Laboratory, Inc.

Analyte	Result	Reporting Limit	Units	Spike Level	Source Result	%REC	%REC Limits	RPD	RPD Limit	Notes
---------	--------	-----------------	-------	-------------	---------------	------	-------------	-----	-----------	-------

Classical Chemistry Parameters - Quality Control
Origins Laboratory, Inc.

Analyte	Result	Reporting Limit	Units	Spike Level	Source Result	%REC	%REC Limits	RPD	RPD Limit	Notes
---------	--------	-----------------	-------	-------------	---------------	------	-------------	-----	-----------	-------

Batch B1G1315 - NO PREP

Blank (B1G1315-BLK1)

Prepared: 07/13/2021 Analyzed: 07/14/2021

Total Dissolved Solids ND 5.00 mg/L

LCS (B1G1315-BS1)

Prepared: 07/13/2021 Analyzed: 07/14/2021

Total Dissolved Solids 809 5.00 mg/L 716 113 85-115

Duplicate (B1G1315-DUP1)

Source: Y107171-13

Prepared: 07/13/2021 Analyzed: 07/14/2021

Total Dissolved Solids 4700 5.00 mg/L 4720 0.404 20

Batch B1G1420 - Filter .45um non acidified

Blank (B1G1420-BLK1)

Prepared: 07/14/2021 Analyzed: 07/15/2021

Chloride ND 0.250 mg/L

Fluoride ND 0.100 "

Bromide ND 0.100 "

Sulfate ND 0.250 "

Nitrate ND 0.250 "

Nitrite ND 0.100 "

Phosphate ND 0.100 "

LCS (B1G1420-BS1)

Prepared: 07/14/2021 Analyzed: 07/15/2021

Chloride 4.23 0.250 mg/L 4.00 106 90-110

Fluoride ND 0.100 " 4.00 90-110

Bromide ND 0.100 " 4.00 90-110

Origins Laboratory, Inc.



The results in this report apply to the samples analyzed in accordance with the chain of custody document. This analytical report must be reproduced in its entirety.

CGRS, Inc
1301 Academy Court
Fort Collins CO 80524

Drezden Kinnaird
Project Number: 18304aa
Project: EWS #13

Classical Chemistry Parameters - Quality Control
Origins Laboratory, Inc.

Analyte	Result	Reporting Limit	Units	Spike Level	Source Result	%REC	%REC Limits	RPD	RPD Limit	Notes
---------	--------	-----------------	-------	-------------	---------------	------	-------------	-----	-----------	-------

Batch B1G1420 - Filter .45um non acidified

LCS (B1G1420-BS1)

Prepared: 07/14/2021 Analyzed: 07/15/2021

Sulfate	4.38	0.250	mg/L	4.00		109	90-110			
Nitrate	4.34	0.250	"	4.00		109	90-110			
Nitrite	ND	0.100	"	4.00			90-110			
Phosphate	ND	0.100	"	4.00			90-110			

Matrix Spike (B1G1420-MS1)

Source: Y107171-18

Prepared: 07/14/2021 Analyzed: 07/15/2021

Chloride	635		mg/L	500	116	104	80-120			
Fluoride	0.00		"	500	0.00		80-120			
Bromide	0.00		"	500	0.00		80-120			
Sulfate	1210		"	500	674	108	80-120			
Nitrate	561		"	500	36.4	105	80-120			
Nitrite	0.00		"	500	0.00		80-120			
Phosphate	0.00		"	500	0.00		80-120			

Matrix Spike Dup (B1G1420-MSD1)

Source: Y107171-18

Prepared: 07/14/2021 Analyzed: 07/15/2021

Chloride	635		mg/L	500	116	104	80-120	0.0157	20	
Fluoride	0.00		"	500	0.00		80-120		20	
Bromide	0.00		"	500	0.00		80-120		20	
Sulfate	1220		"	500	674	109	80-120	0.220	20	
Nitrate	563		"	500	36.4	105	80-120	0.391	20	
Nitrite	0.00		"	500	0.00		80-120		20	
Phosphate	0.00		"	500	0.00		80-120		20	


Batch B1G1525 - Filter .45um non acidified

Blank (B1G1525-BLK1)

Prepared: 07/15/2021 Analyzed: 07/17/2021

Chloride	ND	0.250	mg/L							
Fluoride	ND	0.100	"							

Origins Laboratory, Inc.



The results in this report apply to the samples analyzed in accordance with the chain of custody document. This analytical report must be reproduced in its entirety.


CGRS, Inc
1301 Academy Court
Fort Collins CO 80524

Drezden Kinnaird
Project Number: 18304aa
Project: EWS #13

Classical Chemistry Parameters - Quality Control
Origins Laboratory, Inc.

Analyte	Result	Reporting Limit	Units	Spike Level	Source Result	%REC	%REC Limits	RPD	RPD Limit	Notes
Batch B1G1525 - Filter .45um non acidified										
Blank (B1G1525-BLK1)					Prepared: 07/15/2021 Analyzed: 07/17/2021					
Bromide	ND	0.100	"							
Sulfate	ND	0.250	"							
Nitrate	ND	0.250	"							
Nitrite	ND	0.100	"							
Phosphate	ND	0.100	"							
LCS (B1G1525-BS1)					Prepared: 07/15/2021 Analyzed: 07/17/2021					
Chloride	3.82	0.250	mg/L	4.00		95.5	90-110			
Fluoride	ND	0.100	"	4.00			90-110			
Bromide	ND	0.100	"	4.00			90-110			
Sulfate	3.80	0.250	"	4.00		95.1	90-110			
Nitrate	4.02	0.250	"	4.00		100	90-110			
Nitrite	ND	0.100	"	4.00			90-110			
Phosphate	ND	0.100	"	4.00			90-110			
Matrix Spike (B1G1525-MS1)					Source: Y107200-04		Prepared: 07/15/2021 Analyzed: 07/19/2021			
Chloride	788		mg/L	500	305	96.6	80-120			
Fluoride	0.00		"	500	0.00		80-120			
Bromide	0.00		"	500	0.00		80-120			
Sulfate	1200		"	500	720	95.1	80-120			
Nitrate	507		"	500	19.6	97.4	80-120			
Nitrite	0.00		"	500	0.00		80-120			
Phosphate	0.00		"	500	0.00		80-120			
Matrix Spike Dup (B1G1525-MSD1)					Source: Y107200-04		Prepared: 07/15/2021 Analyzed: 07/19/2021			
Chloride	805		mg/L	500	305	100	80-120	2.13	20	
Fluoride	0.00		"	500	0.00		80-120		20	

Origins Laboratory, Inc.



The results in this report apply to the samples analyzed in accordance with the chain of custody document. This analytical report must be reproduced in its entirety.

CGRS, Inc
1301 Academy Court
Fort Collins CO 80524

Drezden Kinnaird
Project Number: 18304aa
Project: EWS #13


Classical Chemistry Parameters - Quality Control
Origins Laboratory, Inc.

Analyte	Result	Reporting Limit	Units	Spike Level	Source Result	%REC	%REC Limits	RPD	RPD Limit	Notes
---------	--------	-----------------	-------	-------------	---------------	------	-------------	-----	-----------	-------

Batch B1G1525 - Filter .45um non acidified

Matrix Spike Dup (B1G1525-MSD1)		Source: Y107200-04			Prepared: 07/15/2021 Analyzed: 07/19/2021					
Bromide	0.00		mg/L	500	0.00		80-120		20	
Sulfate	1220		"	500	720	99.9	80-120	1.98	20	
Nitrate	537		"	500	19.6	103	80-120	5.72	20	
Nitrite	0.00		"	500	0.00		80-120		20	
Phosphate	0.00		"	500	0.00		80-120		20	

Origins Laboratory, Inc.



The results in this report apply to the samples analyzed in accordance with the chain of custody document. This analytical report must be reproduced in its entirety.

CGRS, Inc
1301 Academy Court
Fort Collins CO 80524

Drezden Kinnaird
Project Number: 18304aa
Project: EWS #13

Notes and Definitions


U Sample is Non-Detect.

ND Analyte NOT DETECTED at or above the reporting limit

RPD Relative Percent Difference

All soil results are reported at a wet weight basis.

Origins Laboratory, Inc.



The results in this report apply to the samples analyzed in accordance with the chain of custody document. This analytical report must be reproduced in its entirety.