



May 19, 2021

Mr. Jim Goddard
Expedition Water Solutions
2015 Clubhouse Drive, Suite 201
Greeley, Colorado 80634

Via E-Mail: jgoddard@expedition-water.com

Subject: Quarterly Groundwater Monitoring Report – 2nd Quarter 2021
Expedition Water Solutions
EWS #13
23360 County Road 54
Greeley, Colorado 80631
CGRS Project #: 1-12456-18304aa

Mr. Goddard:

This report documents the groundwater monitoring activities performed by CGRS, Inc. (CGRS), at the Expedition Water Solutions (EWS) #13 facility located in Greeley, Colorado, as shown on the Site Location Map. Quarterly groundwater monitoring was performed on April 15, 2021 and consisted of obtaining groundwater levels from all accessible monitoring wells, measuring in-situ water quality parameters, and the collection of groundwater quality samples for laboratory analyses from monitoring well locations.

Water quality samples were obtained from seven groundwater monitoring wells (MW-1, MW-2, MW-3, MW-4, MW-5, MW-6, and MW-7) and submitted to Origins Laboratory in Denver, Colorado for analysis of benzene, toluene, ethylbenzene, and total xylenes (BTEX), total dissolved solids (TDS), chloride, and sulfate. In-situ field parameters consisting of temperature, specific conductance, dissolved oxygen (DO), pH, and oxidation-reduction potential (ORP) were measured and documented after sampling each monitoring well. Water quality analytical results and Chain of Custody documentation are included in Attachment A, summarized with historical data in Table 1, and depicted in the Groundwater Sample Location Map.

A review of groundwater analytical data indicate that all BTEX analytes from the groundwater quality samples submitted for analysis were below laboratory method detection limits (MDLs) and Colorado Oil and Gas Conservation Commission (COGCC) maximum allowable concentrations (MACs). Additionally, the inorganic analytes represent normal background water quality conditions historically observed at this facility.

To calculate groundwater elevation, depth to groundwater was measured in monitoring wells MW-1, MW-2, MW-3, MW-4, MW-5, MW-6, and MW-7 and subtracted from surveyed reference elevations, as shown in Table 1. Review of the most recent sample data shows depth to groundwater varied between 8.01 feet below top of well casing (TOC) in monitoring well MW-7 and 12.13 feet below TOC in monitoring well MW-3. The inferred groundwater flow direction is to the north-northeast at a calculated hydraulic gradient of 0.002 ft/ft, as measured between wells MW-7 and MW-2. Inferred water table elevation contours are illustrated in the Groundwater Elevation Map.

At the request of EWS, CGRS will continue to perform groundwater monitoring activities, which will include obtaining water level measurements, obtaining in-situ field measurements, and collecting groundwater quality samples from



project monitoring wells on a quarterly basis. The next monitoring event is scheduled for July 2021. If you have any questions regarding this report, or the project itself, please contact Drezden Kinnaird at dkinnaird@cgrs.com.

Sincerely,
CGRS, Inc.

Joshua Belanger
Staff Geologist

Reviewed by,

Elizabeth Wilson
Project Manager
Geologist

Enclosures:

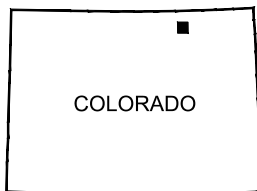
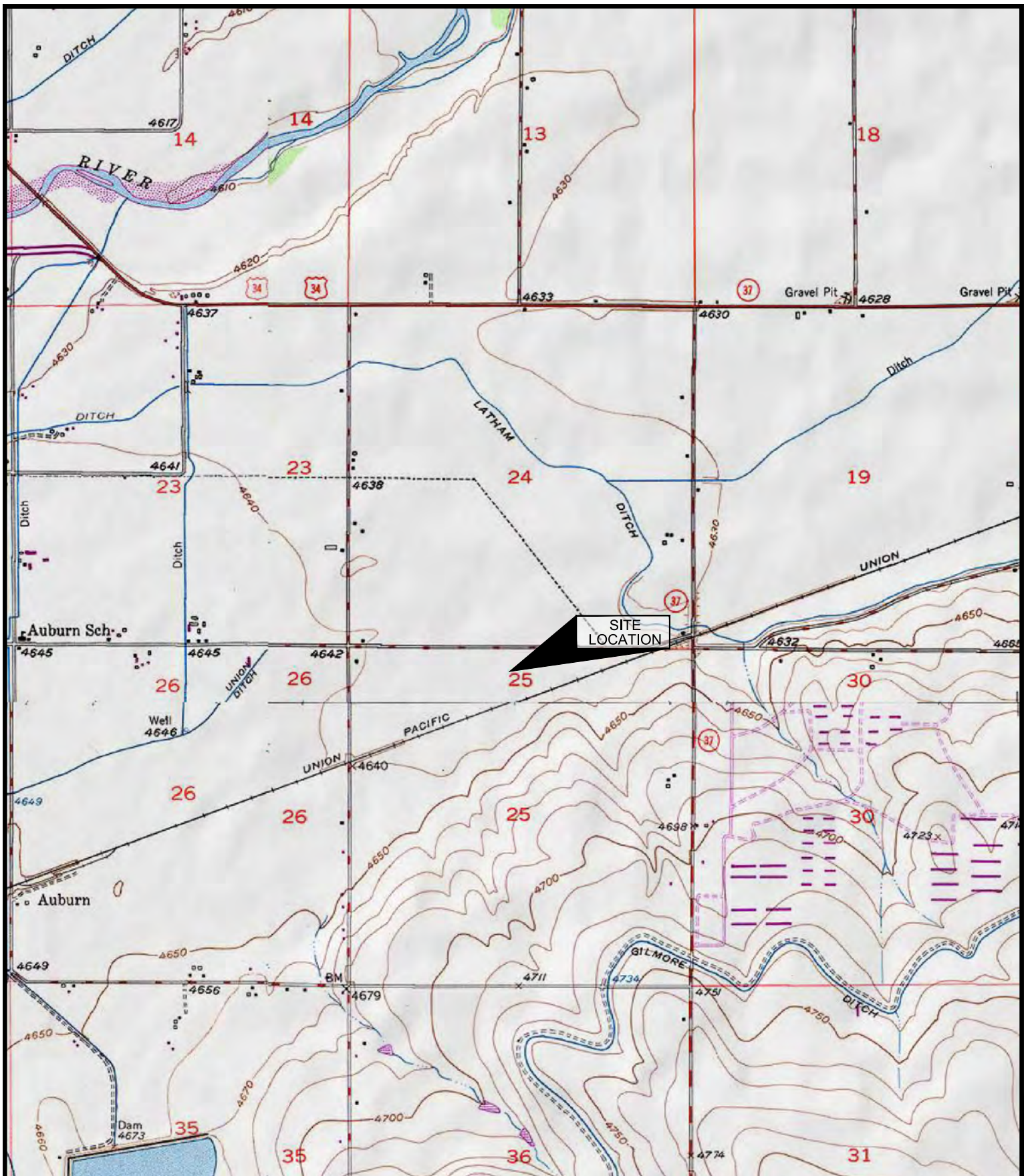
- Site Location Map
- Groundwater Sample Map
- Groundwater Elevation Map
- Table 1 – Groundwater Elevation and Analytical Data
- Attachment A – Groundwater Laboratory Report and Chain of Custody Documentation

Ec: Mr. Dave Gage; Expedition Water Solutions; dgage@expedition-water.com
Mr. Ben Frissell; Weld County Department of Public Health & Environment; bfrissell-durley@weldgov.com
Mr. Matt Fisher – Weld County Department of Public Health & Environment; mfisher@weldgov.com



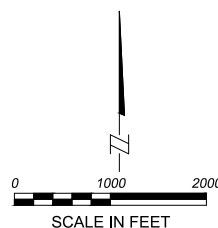
Maps

Site Location Map
Groundwater Sample Location Map
Groundwater Elevation Map



COLORADO

■ QUADRANGLE LOCATION



SITE LOCATION MAP

EXPEDITION WATER SOLUTIONS
EWS #13
23360 COUNTY ROAD 54
GREELEY, COLORADO 80631

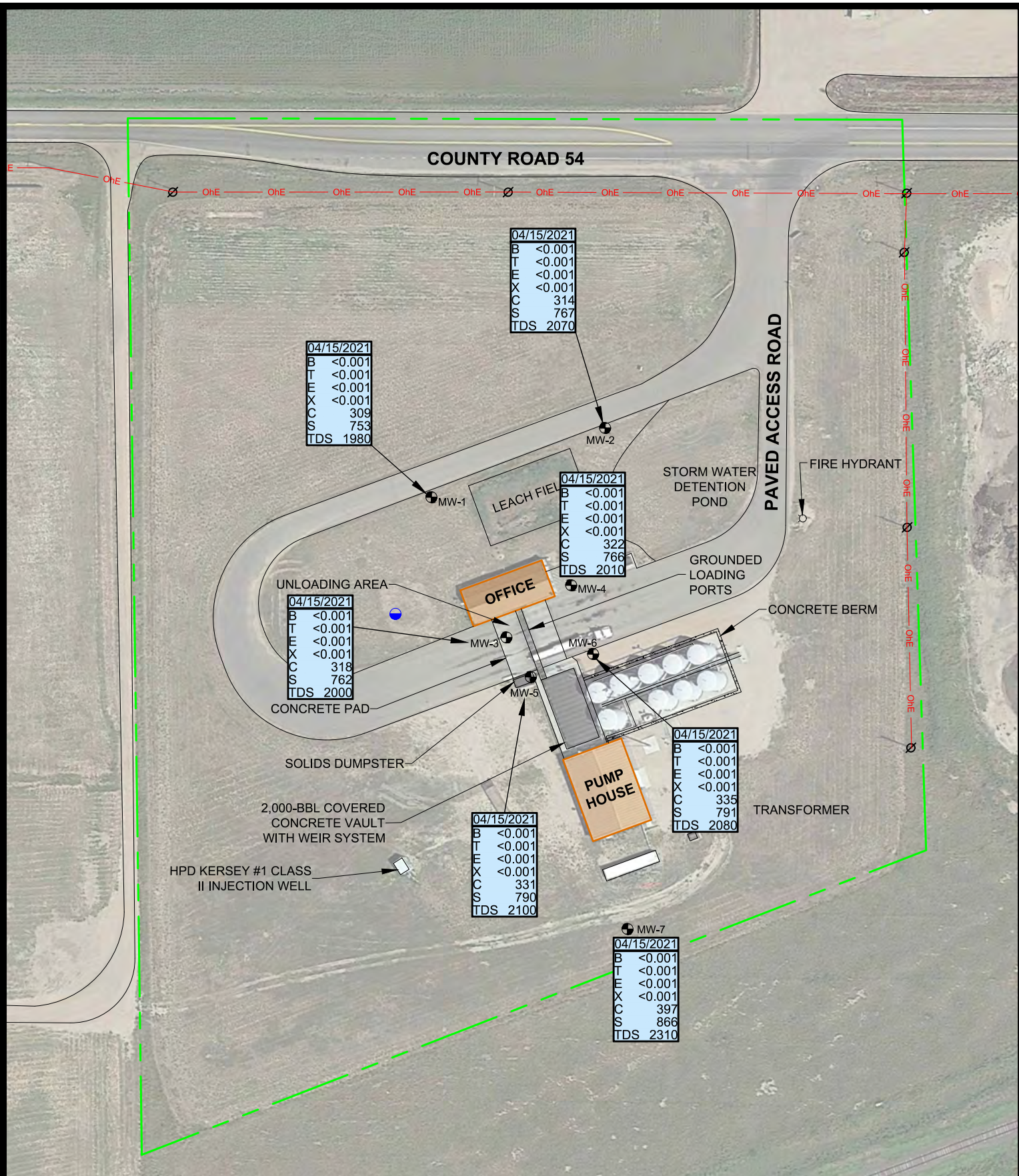
PROJECT:
1-12456-18304aa

DATE:
01/28/2020

DRAFT:
CLB

REVIEW:
JAA



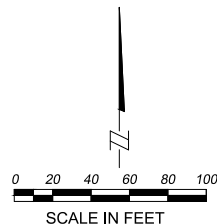


LEGEND

- MW-1 MONITORING WELL
- DOMESTIC WATER WELL
- UTILITY POLE
- OVERHEAD ELECTRIC
- APPROXIMATE PROPERTY BOUNDARY

SAMPLE DATE

B	BENZENE (mg/L)
T	TOLUENE (mg/L)
E	ETHYLBENZENE (mg/L)
X	TOTAL XYLENES (mg/L)
C	CHLORIDE (mg/L)
S	SULFATES (mg/L)
TDS	TOTAL DISSOLVED SOLIDS (mg/L)



GROUNDWATER SAMPLE MAP

April 15, 2021
EXPEDITION WATER SOLUTIONS
EWS #13
23360 COUNTY ROAD 54
GREELEY, COLORADO 80631

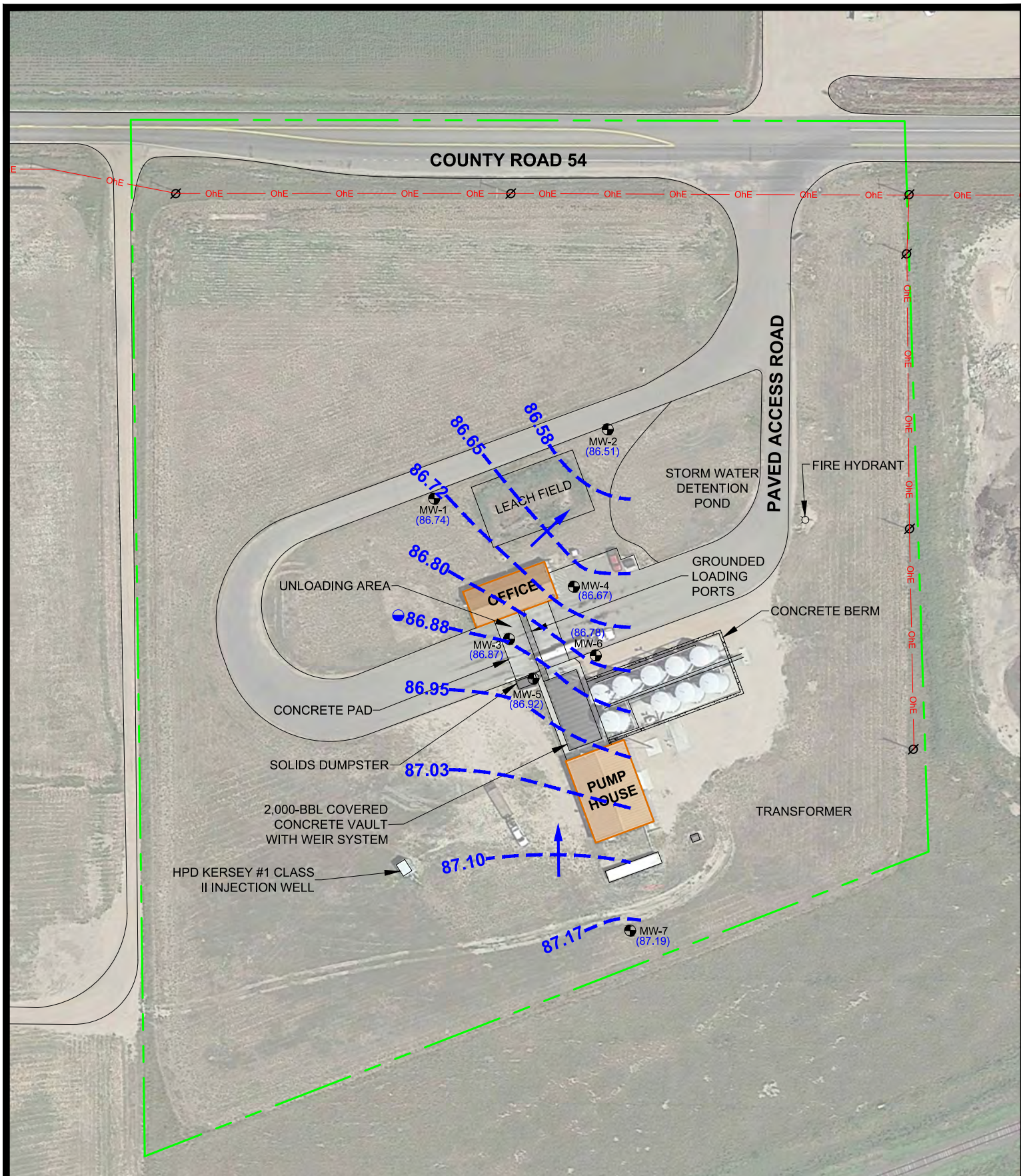
PROJECT:
1-12456-18304aa

DATE:
4/30/2021

DRAFT:
CLB

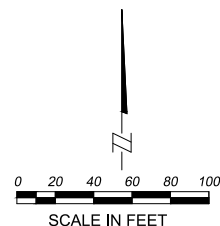
REVIEW:





LEGEND

- MW-1 MONITORING WELL
- DOMESTIC WATER WELL
- (86.74) GROUNDWATER ELEVATION (FEET)
- OhE OVERHEAD ELECTRIC
- APPROXIMATE PROPERTY BOUNDARY
- GROUNDWATER ELEVATION CONTOUR
- INFERRED FLOW DIRECTION
- UTILITY POLE



GROUNDWATER ELEVATION MAP

April 15, 2021
EXPEDITION WATER SOLUTIONS
EWS #13
23360 COUNTY ROAD 54
GREELEY, COLORADO 80631

1-12456-18304aa
DATE:
4/30/2021

DRAFT:
CLB





Table 1

Groundwater Elevation and Analytical Data

Table 1

Groundwater Elevation and Analytical Data

Groundwater Monitoring Report

Expedition Water Solutions - EWS #13

23360 County Road 54, Greeley, CO 80631

Sample ID	Sample Date	Reference Elevation	Depth To Water	Groundwater Elevation	Benzene	Toluene	Ethyl-Benzene	Xylenes	Chloride	Sulfate	TDS	Temperature	Specific Conductance	Dissolved Oxygen	pH	ORP
		(ft)	(ft)	(ft)	(mg/L)	(mg/L)	(mg/L)	(mg/L)	(mg/L)	(mg/L)	(mg/L)	(°C)	(µS/cm)	(mg/L)		(mV)
MAC					0.005	1	0.7	10	1.25 x BG	1.25 x BG	1.25 x BG					
MDL					0.001	0.001	0.001	0.001	1	0.5	5					
MW-1	1/26/2016	96.10	5.66	90.44	<0.001	<0.001	<0.001	<0.001	298	733	2,280	10.13	2,690		7.18	
MW-1	7/26/2016	96.10	4.24	91.86	<0.001	<0.001	<0.001	<0.001	308	845	2,530	17.01	3,322		7.15	
MW-1	1/30/2017	96.10	6.75	89.35	<0.001	<0.001	<0.001	<0.001	340	1,050	1,830	11.74	3,039		7.06	
MW-1	7/24/2017	96.10	4.24	91.86	<0.001	<0.001	<0.001	<0.002	225	617	1,740	16.88	3,289		7.10	
MW-1	1/29/2018	96.10	6.30	89.80	<0.001	<0.001	<0.001	<0.002	382	993	2,320	9.62	3,033		8.50	
MW-1	7/24/2018	96.10	4.95	91.15	<0.001	<0.001	<0.001	<0.002	373	900	1,660	17.95	2,636		7.81	
MW-1	1/30/2019	96.10	6.73	89.37	<0.001	<0.001	<0.001	<0.002	1,280	3,410	1,480	9.40	3,023		7.45	
MW-1	7/29/2019	96.10	5.01	91.09	<0.001	<0.001	<0.001	<0.002	274	670	1,440	16.00	2,938		5.27	
MW-1	1/8/2020	96.10	5.97	90.13	<0.001	<0.001	<0.001	<0.001	321	802	2,250	10.46	3,194	0.38	7.09	151.1
MW-1	4/28/2020	96.10	9.24	86.86	<0.001	<0.001	<0.001	<0.001	342	821	2,140	9.24	3,388	0.31	7.05	128.5
MW-1	7/15/2020	96.10	7.43	88.67	<0.001	<0.001	<0.001	<0.001	369	923	2,310	16.51	2,637	3.85	7.33	145.9
MW-1	10/13/2020	96.10	4.38	91.72	<0.001	<0.001	<0.001	<0.001	223	548	1,580	15.30	2,599	4.15	7.17	114.2
MW-1	1/13/2021	96.10	6.97	89.13	<0.001	<0.001	<0.001	<0.001	296	715	1,980	10.75	2,753	2.47	7.26	121.6
MW-1	4/15/2021	96.10	9.36	86.74	<0.001	<0.001	<0.001	<0.001	309	753	1,980	7.76	2,671	2.65	7.01	197.3
MW-2	1/26/2016	96.40	6.18	90.22	<0.001	<0.001	<0.001	<0.001	330	801	2,250	10.21	2,780		7.03	
MW-2	7/26/2016	96.40	4.60	91.80	<0.001	<0.001	<0.001	<0.001	292	743	2,330	14.80	3,020		7.14	
MW-2	1/30/2017	96.40	7.31	89.09	<0.001	<0.001	<0.001	<0.001	379	1,200	1,890	11.44	3,152		7.01	
MW-2	7/24/2017	96.40	4.49	91.91	<0.001	<0.001	<0.001	<0.002	228	593	1,780	18.37	1,618		7.13	
MW-2	1/29/2018	96.40	6.86	89.54	<0.001	<0.001	<0.001	<0.002	402	1,090	2,560	10.86	3,322		8.77	
MW-2	7/24/2018	96.40	5.24	91.16	<0.001	<0.001	<0.001	<0.002	406	967	1,720	17.18	2,692		7.74	
MW-2	1/30/2019	96.40	4.27	92.13	<0.001	<0.001	<0.001	<0.002	1,220	3,230	1,500	10.57	3,114		7.43	
MW-2	7/29/2019	96.40	5.40	91.00	<0.001	<0.001	<0.001	<0.002	299	692	1,450	15.32	3,028		5.45	
MW-2	1/8/2020	96.40	6.51	89.89	<0.001	<0.001	<0.001	<0.001	322	851	2,410	11.06	3,302	1.95	7.06	132.0
MW-2	4/28/2020	96.40	9.15	87.25	<0.001	<0.001	<0.001	<0.001	355	831	2,120	9.84	3,475	3.06	6.90	137.5
MW-2	7/15/2020	96.40	7.83	88.57	<0.001	<0.001	<0.001	<0.001	380	953	2,320	16.73	2,766	5.64	7.44	151.0
MW-2	10/13/2020	96.40	4.83	91.57	<0.001	<0.001	<0.001	<0.001	156	411	1,220	15.71	1,922	4.76	7.21	114.5
MW-2	1/13/2021	96.40	7.52	88.88	<0.001	<0.001	<0.001	<0.001	306	749	2,080	11.40	2,986	5.28	7.19	115.8
MW-2	4/15/2021	96.40	9.89	86.51	<0.001	<0.001	<0.001	<0.001	314	767	2,070	8.43	3,125	3.27	7.01	197.4
MW-3	1/26/2016	99.00	8.41	90.59	<0.001	<0.001	<0.001	<0.001	335	734	2,310	10.90	2,775		7.28	
MW-3	7/26/2016	99.00	7.14	91.86	<0.001	<0.001	<0.001	<0.001	298	758	2,410	14.39	3,157		7.10	
MW-3	1/30/2017	99.00	9.54	89.46	<0.001	<0.001	<0.001	<0.001	286	1,090	1,800	11.32	2,963		7.06	
MW-3	7/24/2017	99.00	7.20	91.80	<0.001	<0.001	<0.001	<0.002	235	592	1,800	14.20	3,147		7.07	
MW-3	1/29/2018	99.00	9.10	89.90	<0.001	<0.001	<0.001	<0.002	435	1,210	2,270	10.30	3,060		8.76	
MW-3	7/24/2018	99.00	7.78	91.22	<0.001	<0.001	<0.001	<0.002	382	902	1,690	15.15	2,479		7.67	
MW-3	1/30/2019	99.00	9.51	89.49	<0.001	<0.001	<0.001	<0.002	1,230	3,180	1,570	10.28	3,173		7.29	
MW-3	7/29/2019	99.00	7.99	91.01	<0.001	<0.001	<0.001	<0.002	248	620	1,140	13.62	2,938		7.32	
MW-3	1/8/2020	99.00	8.75	90.25	<0.001	<0.001	<0.001	<0.001	340	853	2,320	10.31	3,296	0.50	7.11	168.8
MW-3	4/28/2020	99.00	11.40	87.60	<0.001	<0.001	<0.001	<0.001	357	803	2,120	9.48	3,451	0.21	7.05	117.0
MW-3	7/15/2020	99.00	9.50	89.50	<0.001	<0.001	<0.001	<0.001	375	938	2,300	14.99	2,532	2.50	7.37	150.8
MW-3	10/13/2020	99.00	7.25	91.75	<0.001	<0.001	<0.001	<0.001	248	613	1,770	16.79	3,034	2.95	7.31	120.1
MW-3	1/13/2021	99.00	9.77	89.23	<0.001	<0.001	<0.001	<0.001	302	741	2,070	11.55	2,885	2.70	6.95	91.2
MW-3	4/15/2021	99.00	12.13	86.87	<0.001	<0.001	<0.001	<0.001	318	762	2,000	8.84	3,113	2.09	7.07	178.0
MW-4	1/26/2016	98.70	8.33	90.37	<0.001	<0.001	<0.001	<0.001	322	751	2,250	11.70	2,718		7.29	
MW-4	7/26/2016	98.70	6.97	91.73	<0.001	<0.001	<0.001	<0.001	302	722	2,190	13.80	2,901		7.31	
MW-4	1/30/2017	98.70	9.44	89.26	<0.001	<0.001	<0.001	<0.001	352	1,100	1,770	12.07	2,872		7.12	
MW-4	7/24/2017	98.70	6.98	91.72	<0.001	<0.001	<0.001	<0.002	248	620	1,770	13.50	2,909		7.27	
MW-4	1/29/2018	98.70	8.98	89.72	<0.001	<0.001	<0.001	<0.002	428	1,180	2,400	11.20	3,138		8.40	
MW-4	7/24/2018	98.70	8.10	90.60	0.0017	0.0015	<0.001	<0.002	439	1,020	1,730	15.42	2,484		7.62	

Table 1

Groundwater Elevation and Analytical Data

Groundwater Monitoring Report

Expedition Water Solutions - EWS #13

23360 County Road 54, Greeley, CO 80631

MW-4	1/30/2019	98.70	9.41	89.29	<0.001	<0.001	<0.001	<0.002	1,300	3,340	1,580	10.78	3,220		7.31	
MW-4	7/29/2019	98.70	7.82	90.88	<0.001	<0.001	<0.001	<0.002	276	670	1,450	12.64	3,013		6.98	
MW-4	1/8/2020	98.70	8.65	90.05	<0.001	<0.001	<0.001	<0.001	330	818	2,280	11.94	3,182	0.16	7.04	174.8
MW-4	4/28/2020	98.70	11.29	87.41	<0.001	<0.001	<0.001	<0.001	308	232	2,180	9.61	3,522	0.09	6.97	114.8
MW-4	7/15/2020	98.70	9.28	89.42	<0.001	<0.001	<0.001	<0.001	373	949	2,310	15.09	2,515	2.36	7.26	152.1
MW-4	10/13/2020	98.70	7.11	91.59	<0.001	<0.001	<0.001	<0.001	237	590	1,630	16.46	2,821	2.52	7.24	115.9
MW-4	1/13/2021	98.70	9.68	89.02	<0.001	<0.001	<0.001	<0.001	318	770	2,110	11.64	3,053	3.86	7.07	103.2
MW-4	4/15/2021	98.70	12.03	86.67	<0.001	<0.001	<0.001	<0.001	322	766	2,010	8.74	2,833	2.37	7.05	183.1
MW-5	1/26/2016	99.00	8.41	90.59	<0.001	<0.001	<0.001	<0.001	313	722	2,110	9.31	2,658		7.20	
MW-5	4/26/2016	99.00	10.07	88.93	<0.001	<0.001	<0.001	<0.001	371	725	2,290	8.33	2,991		6.68	
MW-5	7/26/2016	99.00	7.16	91.84	<0.001	<0.001	<0.001	<0.001	270	650	2,250	15.29	2,939		7.21	
MW-5	10/31/2016	99.00	6.87	92.13	<0.001	<0.001	<0.001	<0.001	382	1,050	1,800	16.20	3,364		7.39	
MW-5	1/30/2017	99.00	9.50	89.50	<0.001	<0.001	<0.001	<0.001	362	1,070	1,760	11.29	2,960		7.09	
MW-5	4/27/2017	99.00	11.21	87.79	<0.001	<0.001	<0.001	<0.002	423	933	2,410	8.95	3,146		7.26	
MW-5	7/24/2017	99.00	7.22	91.78	<0.001	<0.001	<0.001	<0.002	207	498	1,780	14.65	2,950		7.17	
MW-5	10/27/2017	99.00	5.48	93.52	<0.001	<0.001	<0.001	<0.002	283	830	2,510	14.81	3,317		7.68	
MW-5	1/29/2018	99.00	9.09	89.91	<0.001	<0.001	<0.001	<0.002	454	1,270	2,460	9.78	3,243		8.30	
MW-5	4/12/2018	99.00	11.00	88.00	<0.001	<0.001	<0.001	<0.002	362	1,100	2,570	8.41	3,337		7.34	
MW-5	7/24/2018	99.00	8.00	91.00	0.0012	<0.001	<0.001	<0.002	505	1,160	1,780	15.96	2,648		7.64	
MW-5	10/29/2018	99.00	6.10	92.90	<0.001	<0.001	<0.001	<0.002	316	683	1,720	16.21	3,061		7.26	
MW-5	1/30/2019	99.00	9.46	89.54	0.0019	0.0021	<0.001	<0.002	1,130	2,910	1,580	10.27	3,190		7.70	
MW-5	4/29/2019	99.00	11.30	87.70	<0.001	<0.001	<0.001	<0.002	227	488	1,580	7.41	3,240		7.19	
MW-5	7/29/2019	99.00	8.03	90.97	<0.001	<0.001	<0.001	<0.002	< 6.00	319	1,400	13.55	2,935		7.33	
MW-5	1/8/2020	99.00	8.71	90.29	<0.001	<0.001	<0.001	<0.001	336	836	2,310	10.66	3,301	0.71	7.08	172.5
MW-5	4/28/2020	99.00	11.35	87.65	<0.001	<0.001	<0.001	<0.001	367	829	2,200	8.88	3,538	1.66	6.99	123.0
MW-5	7/15/2020	99.00	9.60	89.40	<0.001	<0.001	<0.001	<0.001	346	831	2,220	15.94	2,506	1.24	7.01	146.8
MW-5	10/13/2020	99.00	7.25	91.75	0.0016	0.0016	<0.001	<0.001	284	693	1,880	15.39	3,203	3.79	7.13	116.6
MW-5	1/13/2021	99.00	9.74	89.26	<0.001	<0.001	<0.001	<0.001	306	755	2,040	11.41	2,946	3.76	6.96	69.3
MW-5	4/15/2021	99.00	12.08	86.92	<0.001	<0.001	<0.001	<0.001	331	790	2,100	7.78	3,239	3.33	7.06	168.5
MW-6	1/26/2016	98.80	8.28	90.52	0.0039	0.0022	<0.001	<0.001	312	718	2,250	11.78	2,692		7.24	
MW-6	4/26/2016	98.80	9.98	88.82	<0.001	<0.001	<0.001	<0.001	371	751	2,200	9.80	3,059		7.45	
MW-6	7/26/2016	98.80	7.00	91.80	<0.001	<0.001	<0.001	<0.001	264	550	2,340	13.40	3,068		7.16	
MW-6	10/31/2016	98.80	6.72	92.08	<0.001	<0.001	<0.001	<0.001	60	204	1,700	15.38	3,283		7.38	
MW-6	1/30/2017	98.80	9.42	89.38	0.0018	0.0018	<0.001	<0.001	387	1,110	1,780	12.26	2,957		7.17	
MW-6	4/27/2017	98.80	11.12	87.68	<0.001	<0.001	<0.001	<0.002	358	812	2,350	10.69	3,030		7.35	
MW-6	7/24/2017	98.80	7.03	91.77	<0.001	<0.001	<0.001	<0.002	236	564	1,800	13.18	3,014		7.09	
MW-6	10/27/2017	98.80	5.38	93.42	0.0019	0.0012	<0.001	<0.002	69	167	2,510	16.91	3,338		7.73	
MW-6	1/29/2018	98.80	9.00	89.80	<0.001	<0.001	<0.001	<0.002	526	1,470	2,510	13.65	3,294		8.45	
MW-6	4/12/2018	98.80	10.97	87.83	<0.001	<0.001	<0.001	<0.002	390	1,130	2,540	11.86	3,347		7.27	
MW-6	7/24/2018	98.80	7.92	90.88	0.015	0.014	<0.001	0.0028	451	1,070	1,840	16.80	2,790		7.73	
MW-6	10/29/2018	98.80	6.00	92.80	<0.001	<0.001	<0.001	<0.002	269	602	1,720	19.39	3,026		7.26	
MW-6	1/30/2019	98.80	9.38	89.42	0.001	<0.001	<0.001	<0.002	989	2,520	1,560	13.82	3,219		7.30	
MW-6	4/29/2019	98.80	11.24	87.56	<0.001	<0.001	<0.001	<0.002	233	570	1,570	9.66	3,211		7.16	
MW-6	7/29/2019	98.80	7.88	90.92	<0.001	<0.001	<0.001	<0.002	258	647	1,540	14.99	2,999		7.38	
MW-6	1/8/2020	98.80	8.64	90.16	<0.001	<0.001	<0.001	<0.001	331	821	2,340	12.38	3,299	0.65	7.04	173.2
MW-6	4/28/2020	98.80	11.28	87.52	<0.001	<0.001	<0.001	<0.001	358	804	2,170	10.42	3,482	1.24	6.93	113.5
MW-6	7/15/2020	98.80	9.40	89.40	Unable to Perform Groundwater Monitoring Due to Obstruction in Well											
MW-6	10/13/2020	98.80	7.13	91.67	<0.001	<0.001	<0.001	<0.001	263	673	1,910	14.85	3,355	3.14	7.28	121.0
MW-6	1/13/2021	98.80	9.64	89.16	<0.001	<0.001	<0.001	<0.001	313	771	2,100	11.80	2,909	2.19	7.11	111.3
MW-6	4/15/2021	98.80	12.02	86.78	<0.001	<0.001	<0.001	<0.001	335	791	2,080	8.66	2,936	2.54	7.01	191.1
MW-7	7/26/2016	95.20	3.45	91.75	<0.001	<0.001	<0.001	<0.001	306	674	2,630	13.50	3,424		6.60	
MW-7	1/30/2017	95.20	5.43	89.77	<0.001	<0.001	<0.001	<0.001	318	988	1,730	8.60	2,912		6.85	
MW-7	7/24/2017	95.20	3.68	91.52	<0.001	<0.001	<0.001	<0.002	267	573	1,800	13.92	3,475		6.60	
MW-7	1/29/2018	95.20	5.02	90.18	<0.001	<0.001	<0.001	<0.002	576	1,440	2,610	8.34	3,403		8.91	
MW-7	7/24/2018	95.20	4.75	90.45	<0.001	<0.001	<0.001	<0.002	400	851	1,850	13.95	2,630		8.12	

Table 1

Groundwater Elevation and Analytical Data
Groundwater Monitoring Report
Expedition Water Solutions - EWS #13
23360 County Road 54, Greeley, CO 80631

MW-7	1/30/2019	95.20	5.39	89.81	<0.001	<0.001	<0.001	<0.002	835	1,900	1,640	7.92	3,361		7.36	
MW-7	7/29/2019	95.20	4.39	90.81	<0.001	<0.001	<0.001	<0.002	210	541	1,590	13.12	3,216		7.44	
MW-7	1/8/2020	95.20	4.65	90.55	<0.001	<0.001	<0.001	<0.001	358	808	2,200	9.42	3,238	0.16	7.04	96.1
MW-7	4/28/2020	95.20	7.28	87.92	<0.001	<0.001	<0.001	<0.001	398	870	2,310	10.70	3,597	0.00	6.22	158.1
MW-7	7/15/2020	95.20	6.22	88.98	<0.001	<0.001	<0.001	<0.001	450	986	2,320	16.50	2,625	0.41	6.76	170.1
MW-7	10/13/2020	95.20	3.41	91.79	<0.001	<0.001	<0.001	<0.001	343	795	2,200	14.17	3,627	1.06	7.39	125.5
MW-7	1/13/2021	95.20	5.67	89.53	<0.001	<0.001	<0.001	<0.001	336	809	2,180	11.53	3,007	2.95	7.08	7.8
MW-7	4/15/2021	95.20	8.01	87.19	<0.001	<0.001	<0.001	<0.001	397	866	2,310	8.72	3,392	0.73	7.04	140.9

Notes

A blank data box indicates that the analysis or measurement was not completed during the specified monitoring event.
Organic data in bold text indicate concentrations in excess of COGCC MACs.
The terms, "MAC" and "1.25 x BG", originating from COGCC Table 910-1, address groundwater monitoring wells and do not apply to sub sump locations.

Acronyms used in Table 1 are drawn from this list as needed

- BG = Background
- COGCC = Colorado Oil and Gas Conservation Commission
- DRY = No liquid discovered at the specific sampling point
- INA = Inaccessible
- MAC = COGCC Maximum Allowable Concentration; as indicated, or 1.25 times background concentration levels
- MDL = Laboratory Method Detection Limit
- ORP = Oxidation Reduction Potential
- TDS = Total Dissolved Solids



Attachment A

Groundwater Laboratory Report and Chain of Custody Documentation



April 23, 2021

CGRS, Inc

Drezden Kinnaird

1301 Academy Court

Fort Collins CO 80524

Project Name - EWS #13

Project Number - 18304aa

Attached are your analytical results for EWS #13 received by Origins Laboratory, Inc. April 16, 2021. This project is associated with Origins project number Y104276-01.

The analytical results in the following report were analyzed under the guidelines of EPA Methods. These methods are identified as follows; "SW" are defined in SW-846, "EPA" are defined in 40CFR part 136 and "SM" are defined in the most current revision of Standard Methods For the Examination of Water and Wastewater.

The analytical results apply specifically to the samples and analyses specified per the attached Chain of Custody. As such, this report shall not be reproduced except in full, without the written approval of Origin's laboratory.

Unless otherwise noted, the analytical results for all soil samples are reported on a wet weight basis. All analytical analyses were performed under NELAP guidelines unless noted by a data qualifier.

Any holding time exceedances, deviations from the method specifications or deviations from Origins Laboratory's Standard Operating Procedures are outlined in the case narrative.

Thank you for selecting Origins for your analytical needs. Please contact us with any questions concerning this report, or if we can help with anything at all.

Origins Laboratory, Inc.
303.433.1322
o-squad@oelabinc.com



1725 Elk Place, Denver, CO 80211 | Phone: 303.433.1322 | Fax: 303.265.9645

CGRS, Inc
1301 Academy Court
Fort Collins CO 80524

Drezden Kinnaird
Project Number: 18304aa
Project: EWS #13

CROSS REFERENCE REPORT

Sample ID	Laboratory ID	Matrix	Date Sampled	Date Received
MW-1	Y104276-01	Water	April 15, 2021 9:30	04/16/2021 09:20
MW-2	Y104276-02	Water	April 15, 2021 10:00	04/16/2021 09:20
MW-3	Y104276-03	Water	April 15, 2021 10:30	04/16/2021 09:20
MW-4	Y104276-04	Water	April 15, 2021 11:00	04/16/2021 09:20
MW-5	Y104276-05	Water	April 15, 2021 11:30	04/16/2021 09:20
MW-6	Y104276-06	Water	April 15, 2021 12:00	04/16/2021 09:20
MW-7	Y104276-07	Water	April 15, 2021 12:30	04/16/2021 09:20

Origins Laboratory, Inc.



The results in this report apply to the samples analyzed in accordance with the chain of custody document. This analytical report must be reproduced in its entirety.

CGRS, Inc
1301 Academy Court
Fort Collins CO 80524

Drezden Kinnaird
Project Number: 18304aa
Project: EWS #13

ORIGINS
LABORATORY, INC

www.originslaboratory.com

page 1 of 1

104276

Client: CGRS
Address: 1301 Academy Ct.
Telephone Number: 970-493-7780
Email Address: jbelanger@cgrs.com, dkinnaird@cgrs.com

Project Manager: Drezden Kinnaird
Project Name: EWS #13
Project Number: 18304aa
Samples Collected By: jbelanger@cgrs.com, dkinnaird@cgrs.com

Sample ID Description	Date Sampled	Time Sampled	# of Containers	Preservative				Matrix			Analysis	Sample Instructions
				Unpreserved	HCl	HNO ₃	Other	Groundwater	Soil	Air Summation		
MW-1	4/15/21	9:30	5	X				X			X	1
MW-2	4/15/21	11:00	5	X				X			X	2
MW-3	4/15/21	10:30	5	X				X			X	3
MW-4	4/15/21	11:00	5	X				X			X	4
MW-5	4/15/21	11:30	5	X				X			X	5
MW-6	4/15/21	12:00	5	X				X			X	6
MW-7	4/15/21	12:30	5	X				X			X	7
												8
												9
												10

Relinquished By: *[Signature]*
Date: 4-15-21
Time: 16:30

Received By: *[Signature]*
Date: 4/16/21
Time: 9:20

Turnaround Time:
Same Day ☐ 24 Hr ☐
48 Hr ☐ 72 Hr ☐
Standard ☒

Origins Laboratory, Inc.

Jordan A. Merrill

The results in this report apply to the samples analyzed in accordance with the chain of custody document. This analytical report must be reproduced in its entirety.

CGRS, Inc
1301 Academy Court
Fort Collins CO 80524

Drezden Kinnaird
Project Number: 18304aa
Project: EWS #13

Origins Laboratory

F-012207-01-R1
Effective Date: 01/09/12

Sample Receipt Checklist

Origins Work Order: Y104276

Client: CGRS

Client Project ID: EWS 13

Checklist Completed by: KML

Shipped Via: FIP

Date/time completed: 04-16-21

(UPS, FedEx, Hand Delivered, Pick-up, etc.)

Airbill #:

Matrix(s) Received: (Check all that apply): Soil/Solid ☒ Water ☐ Other ☐

Cooler Number/Temperature: 1, 5.6 °C 1 °C 1 °C (Describe) °C

Thermometer ID: T003

Requirement Description	Yes	No	N/A	Comments (if any)
If samples require cooling, was the temperature between 0°C to ≤ 6°C ⁽¹⁾ ?	<input checked="" type="checkbox"/>	<input type="checkbox"/>	<input type="checkbox"/>	
Is there ice present (document if blue ice is used)	<input checked="" type="checkbox"/>	<input type="checkbox"/>	<input type="checkbox"/>	
Are custody seals present on cooler? (if so, document in comments if they are signed and dated, broken or intact)	<input type="checkbox"/>	<input type="checkbox"/>	<input checked="" type="checkbox"/>	
Are custody seals present on each sample container? (if so, document in comments if they are signed and dated, broken or intact)	<input type="checkbox"/>	<input type="checkbox"/>	<input checked="" type="checkbox"/>	
Were all samples received intact ⁽¹⁾ ?	<input checked="" type="checkbox"/>	<input type="checkbox"/>	<input type="checkbox"/>	
Was adequate sample volume provided ⁽¹⁾ ?	<input checked="" type="checkbox"/>	<input type="checkbox"/>	<input type="checkbox"/>	
Are short holding time analytes or samples with HTs due within 48 hours present ⁽¹⁾ ?	<input type="checkbox"/>	<input type="checkbox"/>	<input checked="" type="checkbox"/>	
Is a chain-of-custody (COC) present and filled out completely ⁽¹⁾ ?	<input checked="" type="checkbox"/>	<input type="checkbox"/>	<input type="checkbox"/>	
Does the COC agree with the number and type of sample bottles received ⁽¹⁾ ?	<input checked="" type="checkbox"/>	<input type="checkbox"/>	<input type="checkbox"/>	
Do the sample IDs on the bottle labels match the COC ⁽¹⁾ ?	<input checked="" type="checkbox"/>	<input type="checkbox"/>	<input type="checkbox"/>	
Is the COC properly relinquished by the client with date and time recorded ⁽¹⁾ ?	<input checked="" type="checkbox"/>	<input type="checkbox"/>	<input type="checkbox"/>	
For volatiles in water – is there headspace (> ¼ inch bubble) present? If yes, contact client and note in narrative.	<input type="checkbox"/>	<input checked="" type="checkbox"/>	<input type="checkbox"/>	
Are samples preserved that require preservation and was it checked ⁽¹⁾ ? (note ID of confirmation instrument used in comments) / (preservation is not confirmed for subcontracted analyses in order to insure sample integrity) (pH < 2 for samples preserved with HNO ₃ , HCl, H ₂ SO ₄) / (pH > 10 for samples preserved with NaAsO ₂ +NaOH, ZnAc+NaOH)	<input type="checkbox"/>	<input type="checkbox"/>	<input checked="" type="checkbox"/>	
Additional Comments (if any):				

⁽¹⁾If NO, then contact the client before proceeding with analysis and note date/time and person contacted as well as the corrective action to in the additional comments (above) and the case narrative.

Reviewed by Jm (Project Manager)

4-19-21
Date/Time Reviewed

Origins Laboratory, Inc.

Jm

The results in this report apply to the samples analyzed in accordance with the chain of custody document. This analytical report must be reproduced in its entirety.

CGRS, Inc
1301 Academy Court
Fort Collins CO 80524

Drezden Kinnaird
Project Number: 18304aa
Project: EWS #13

MW-1

4/15/2021 9:30:00AM

Analyte	Result	Reporting Limit	Units	Dilution	Batch	Analyst	Prepared	Analyzed	Notes
---------	--------	-----------------	-------	----------	-------	---------	----------	----------	-------

Origins Laboratory, Inc. Y104276-01 (Water)

Anions by IC 300.0

Chloride	309	62.5	mg/L	125	B1D1605	analy	04/16/2021	04/17/2021	
Sulfate	753	62.5	"	"	"	analy	"	"	

BTEX by EPA 8260D

Benzene	ND	0.00100	mg/L	1	B1D1615	TEM	04/16/2021	04/19/2021	U
Toluene	ND	0.00100	"	"	"	TEM	"	"	U
Ethylbenzene	ND	0.00100	"	"	"	TEM	"	"	U
Xylenes, total	ND	0.00100	"	"	"	TEM	"	"	U

Surrogate: 1,2-Dichloroethane-d4	97.1 %	70-130			"	"	"	
Surrogate: Toluene-d8	99.2 %	70-130			"	"	"	
Surrogate: 4-Bromofluorobenzene	94.7 %	70-130			"	"	"	

Total Dissolved Solids by 2540C

Total Dissolved Solids	1980	5.00	mg/L	1	B1D1903	DJL	04/19/2021	04/20/2021	
------------------------	------	------	------	---	---------	-----	------------	------------	--

Origins Laboratory, Inc.



The results in this report apply to the samples analyzed in accordance with the chain of custody document. This analytical report must be reproduced in its entirety.

CGRS, Inc
1301 Academy Court
Fort Collins CO 80524

Drezden Kinnaird
Project Number: 18304aa
Project: EWS #13

MW-2

4/15/2021 10:00:00AM

Analyte	Result	Reporting Limit	Units	Dilution	Batch	Analyst	Prepared	Analyzed	Notes
---------	--------	-----------------	-------	----------	-------	---------	----------	----------	-------

Origins Laboratory, Inc. Y104276-02 (Water)

Anions by IC 300.0

Chloride	314	62.5	mg/L	125	B1D1605	analy	04/16/2021	04/17/2021	
Sulfate	767	62.5	"	"	"	analy	"	"	

BTEX by EPA 8260D

Benzene	ND	0.00100	mg/L	1	B1D1615	TEM	04/16/2021	04/19/2021	U
Toluene	ND	0.00100	"	"	"	TEM	"	"	U
Ethylbenzene	ND	0.00100	"	"	"	TEM	"	"	U
Xylenes, total	ND	0.00100	"	"	"	TEM	"	"	U

Surrogate: 1,2-Dichloroethane-d4	98.7 %	70-130			"	"	"	
Surrogate: Toluene-d8	98.8 %	70-130			"	"	"	
Surrogate: 4-Bromofluorobenzene	93.6 %	70-130			"	"	"	

Total Dissolved Solids by 2540C

Total Dissolved Solids	2070	5.00	mg/L	1	B1D1903	DJL	04/19/2021	04/20/2021	
------------------------	------	------	------	---	---------	-----	------------	------------	--

Origins Laboratory, Inc.



The results in this report apply to the samples analyzed in accordance with the chain of custody document. This analytical report must be reproduced in its entirety.

CGRS, Inc
1301 Academy Court
Fort Collins CO 80524

Drezden Kinnaird
Project Number: 18304aa
Project: EWS #13

MW-3

4/15/2021 10:30:00AM

Analyte	Result	Reporting Limit	Units	Dilution	Batch	Analyst	Prepared	Analyzed	Notes
---------	--------	-----------------	-------	----------	-------	---------	----------	----------	-------

Origins Laboratory, Inc. Y104276-03 (Water)

Anions by IC 300.0

Chloride	318	62.5	mg/L	125	B1D1605	analy	04/16/2021	04/17/2021	
Sulfate	762	62.5	"	"	"	analy	"	"	

BTEX by EPA 8260D

Benzene	ND	0.00100	mg/L	1	B1D1615	TEM	04/16/2021	04/19/2021	U
Toluene	ND	0.00100	"	"	"	TEM	"	"	U
Ethylbenzene	ND	0.00100	"	"	"	TEM	"	"	U
Xylenes, total	ND	0.00100	"	"	"	TEM	"	"	U

Surrogate: 1,2-Dichloroethane-d4	99.5 %	70-130			"	"	"	
Surrogate: Toluene-d8	98.9 %	70-130			"	"	"	
Surrogate: 4-Bromofluorobenzene	94.9 %	70-130			"	"	"	

Total Dissolved Solids by 2540C

Total Dissolved Solids	2000	5.00	mg/L	1	B1D1903	DJL	04/19/2021	04/20/2021	
------------------------	------	------	------	---	---------	-----	------------	------------	--

Origins Laboratory, Inc.



The results in this report apply to the samples analyzed in accordance with the chain of custody document. This analytical report must be reproduced in its entirety.

CGRS, Inc
1301 Academy Court
Fort Collins CO 80524

Drezden Kinnaird
Project Number: 18304aa
Project: EWS #13

MW-4

4/15/2021 11:00:00AM

Analyte	Result	Reporting Limit	Units	Dilution	Batch	Analyst	Prepared	Analyzed	Notes
---------	--------	-----------------	-------	----------	-------	---------	----------	----------	-------

Origins Laboratory, Inc. Y104276-04 (Water)

Anions by IC 300.0

Chloride	322	62.5	mg/L	125	B1D1605	analy	04/16/2021	04/17/2021	
Sulfate	766	62.5	"	"	"	analy	"	"	

BTEX by EPA 8260D

Benzene	ND	0.00100	mg/L	1	B1D1615	TEM	04/16/2021	04/19/2021	U
Toluene	ND	0.00100	"	"	"	TEM	"	"	U
Ethylbenzene	ND	0.00100	"	"	"	TEM	"	"	U
Xylenes, total	ND	0.00100	"	"	"	TEM	"	"	U

Surrogate: 1,2-Dichloroethane-d4	100 %	70-130			"	"	"	
Surrogate: Toluene-d8	97.8 %	70-130			"	"	"	
Surrogate: 4-Bromofluorobenzene	93.5 %	70-130			"	"	"	

Total Dissolved Solids by 2540C

Total Dissolved Solids	2010	5.00	mg/L	1	B1D1903	DJL	04/19/2021	04/20/2021	
------------------------	------	------	------	---	---------	-----	------------	------------	--

Origins Laboratory, Inc.

The results in this report apply to the samples analyzed in accordance with the chain of custody document. This analytical report must be reproduced in its entirety.

CGRS, Inc
1301 Academy Court
Fort Collins CO 80524

Drezden Kinnaird
Project Number: 18304aa
Project: EWS #13

MW-5

4/15/2021 11:30:00AM

Analyte	Result	Reporting Limit	Units	Dilution	Batch	Analyst	Prepared	Analyzed	Notes
---------	--------	-----------------	-------	----------	-------	---------	----------	----------	-------

Origins Laboratory, Inc.
Y104276-05 (Water)

Anions by IC 300.0

Chloride	331	62.5	mg/L	125	B1D1605	analy	04/16/2021	04/17/2021	
Sulfate	790	62.5	"	"	"	analy	"	"	

BTEX by EPA 8260D

Benzene	ND	0.00100	mg/L	1	B1D1615	TEM	04/16/2021	04/19/2021	U
Toluene	ND	0.00100	"	"	"	TEM	"	"	U
Ethylbenzene	ND	0.00100	"	"	"	TEM	"	"	U
Xylenes, total	ND	0.00100	"	"	"	TEM	"	"	U

Surrogate: 1,2-Dichloroethane-d4	102 %	70-130			"	"	"	
Surrogate: Toluene-d8	96.6 %	70-130			"	"	"	
Surrogate: 4-Bromofluorobenzene	93.4 %	70-130			"	"	"	

Total Dissolved Solids by 2540C

Total Dissolved Solids	2100	5.00	mg/L	1	B1D1903	DJL	04/19/2021	04/20/2021	
------------------------	------	------	------	---	---------	-----	------------	------------	--

Origins Laboratory, Inc.



The results in this report apply to the samples analyzed in accordance with the chain of custody document. This analytical report must be reproduced in its entirety.

CGRS, Inc
1301 Academy Court
Fort Collins CO 80524

Drezden Kinnaird
Project Number: 18304aa
Project: EWS #13

MW-6

4/15/2021 12:00:00PM

Analyte	Result	Reporting Limit	Units	Dilution	Batch	Analyst	Prepared	Analyzed	Notes
---------	--------	-----------------	-------	----------	-------	---------	----------	----------	-------

Origins Laboratory, Inc. Y104276-06 (Water)

Anions by IC 300.0

Chloride	335	62.5	mg/L	125	B1D1605	analy	04/16/2021	04/17/2021	
Sulfate	791	62.5	"	"	"	analy	"	"	

BTEX by EPA 8260D

Benzene	ND	0.00100	mg/L	1	B1D1615	TEM	04/16/2021	04/19/2021	U
Toluene	ND	0.00100	"	"	"	TEM	"	"	U
Ethylbenzene	ND	0.00100	"	"	"	TEM	"	"	U
Xylenes, total	ND	0.00100	"	"	"	TEM	"	"	U

Surrogate: 1,2-Dichloroethane-d4	101 %	70-130			"	"	"	
Surrogate: Toluene-d8	98.5 %	70-130			"	"	"	
Surrogate: 4-Bromofluorobenzene	93.9 %	70-130			"	"	"	

Total Dissolved Solids by 2540C

Total Dissolved Solids	2080	5.00	mg/L	1	B1D1903	DJL	04/19/2021	04/20/2021	
------------------------	------	------	------	---	---------	-----	------------	------------	--

Origins Laboratory, Inc.



The results in this report apply to the samples analyzed in accordance with the chain of custody document. This analytical report must be reproduced in its entirety.

CGRS, Inc
1301 Academy Court
Fort Collins CO 80524

Drezden Kinnaird
Project Number: 18304aa
Project: EWS #13

MW-7

4/15/2021 12:30:00PM

Analyte	Result	Reporting Limit	Units	Dilution	Batch	Analyst	Prepared	Analyzed	Notes
---------	--------	-----------------	-------	----------	-------	---------	----------	----------	-------

Origins Laboratory, Inc.
Y104276-07 (Water)

Anions by IC 300.0

Chloride	397	62.5	mg/L	125	B1D1605	analy	04/16/2021	04/17/2021	
Sulfate	866	62.5	"	"	"	analy	"	"	

BTEX by EPA 8260D

Benzene	ND	0.00100	mg/L	1	B1D1615	TEM	04/16/2021	04/19/2021	U
Toluene	ND	0.00100	"	"	"	TEM	"	"	U
Ethylbenzene	ND	0.00100	"	"	"	TEM	"	"	U
Xylenes, total	ND	0.00100	"	"	"	TEM	"	"	U

Surrogate: 1,2-Dichloroethane-d4	102 %	70-130			"	"	"	
Surrogate: Toluene-d8	98.0 %	70-130			"	"	"	
Surrogate: 4-Bromofluorobenzene	94.2 %	70-130			"	"	"	

Total Dissolved Solids by 2540C

Total Dissolved Solids	2310	5.00	mg/L	1	B1D1903	DJL	04/19/2021	04/20/2021	
------------------------	------	------	------	---	---------	-----	------------	------------	--

Origins Laboratory, Inc.



The results in this report apply to the samples analyzed in accordance with the chain of custody document. This analytical report must be reproduced in its entirety.

CGRS, Inc
1301 Academy Court
Fort Collins CO 80524

Drezden Kinnaird
Project Number: 18304aa
Project: EWS #13

Volatile Organic Compounds by GC/MS SW846 8260D - Quality Control
Origins Laboratory, Inc.

Analyte	Result	Reporting Limit	Units	Spike Level	Source Result	%REC	%REC Limits	RPD	RPD Limit	Notes
---------	--------	-----------------	-------	-------------	---------------	------	-------------	-----	-----------	-------

Batch B1D1615 - EPA 5030B (Water)

Blank (B1D1615-BLK1)

Prepared: 04/16/2021 Analyzed: 04/19/2021

Benzene	ND	0.00100	mg/L							U
Toluene	ND	0.00100	"							U
Ethylbenzene	ND	0.00100	"							U
Xylenes, total	ND	0.00100	"							U
Surrogate: 1,2-Dichloroethane-d4	0.061		"	0.0625		97.3	70-130			
Surrogate: Toluene-d8	0.062		"	0.0625		99.2	70-130			
Surrogate: 4-Bromofluorobenzene	0.060		"	0.0625		95.4	70-130			

Origins Laboratory, Inc.



The results in this report apply to the samples analyzed in accordance with the chain of custody document. This analytical report must be reproduced in its entirety.

CGRS, Inc
1301 Academy Court
Fort Collins CO 80524

Drezden Kinnaird
Project Number: 18304aa
Project: EWS #13

Volatile Organic Compounds by GC/MS SW846 8260D - Quality Control
Origins Laboratory, Inc.

Analyte	Result	Reporting Limit	Units	Spike Level	Source Result	%REC	%REC Limits	RPD	RPD Limit	Notes
---------	--------	-----------------	-------	-------------	---------------	------	-------------	-----	-----------	-------

Batch B1D1615 - EPA 5030B (Water)

LCS (B1D1615-BS1)

Prepared: 04/16/2021 Analyzed: 04/19/2021

Benzene	0.0417	0.00100	mg/L	0.0500		83.4	70-130			
Toluene	0.0430	0.00100	"	0.0500		86.0	70-130			
Ethylbenzene	0.0463	0.00100	"	0.0500		92.6	70-130			
m,p-Xylene	0.0932	0.00200	"	0.100		93.2	70-130			
o-Xylene	0.0486	0.00100	"	0.0500		97.2	70-130			
Surrogate: 1,2-Dichloroethane-d4	0.065		"	0.0625		105	70-130			
Surrogate: Toluene-d8	0.065		"	0.0625		104	70-130			
Surrogate: 4-Bromofluorobenzene	0.060		"	0.0625		95.6	70-130			

Origins Laboratory, Inc.



The results in this report apply to the samples analyzed in accordance with the chain of custody document. This analytical report must be reproduced in its entirety.

CGRS, Inc
1301 Academy Court
Fort Collins CO 80524

Drezden Kinnaird
Project Number: 18304aa
Project: EWS #13

Volatile Organic Compounds by GC/MS SW846 8260D - Quality Control
Origins Laboratory, Inc.

Analyte	Result	Reporting Limit	Units	Spike Level	Source Result	%REC	%REC Limits	RPD	RPD Limit	Notes
---------	--------	-----------------	-------	-------------	---------------	------	-------------	-----	-----------	-------

Batch B1D1615 - EPA 5030B (Water)

Matrix Spike (B1D1615-MS1)		Source: Y104268-01			Prepared: 04/16/2021 Analyzed: 04/19/2021					
Benzene	0.245	0.00100	mg/L	0.0500	0.210	70.2	70-130			
Toluene	0.0500	0.00100	"	0.0500	0.000210	99.6	70-130			
Ethylbenzene	0.0541	0.00100	"	0.0500	0.000360	108	70-130			
m,p-Xylene	0.110	0.00200	"	0.100	0.000780	110	70-130			
o-Xylene	0.0570	0.00100	"	0.0500	ND	114	70-130			
Surrogate: 1,2-Dichloroethane-d4	0.058		"	0.0625		93.2	70-130			
Surrogate: Toluene-d8	0.062		"	0.0625		99.7	70-130			
Surrogate: 4-Bromofluorobenzene	0.061		"	0.0625		97.5	70-130			

Origins Laboratory, Inc.



The results in this report apply to the samples analyzed in accordance with the chain of custody document. This analytical report must be reproduced in its entirety.

CGRS, Inc
1301 Academy Court
Fort Collins CO 80524

Drezden Kinnaird
Project Number: 18304aa
Project: EWS #13

Volatile Organic Compounds by GC/MS SW846 8260D - Quality Control
Origins Laboratory, Inc.

Analyte	Result	Reporting Limit	Units	Spike Level	Source Result	%REC	%REC Limits	RPD	RPD Limit	Notes
---------	--------	-----------------	-------	-------------	---------------	------	-------------	-----	-----------	-------

Batch B1D1615 - EPA 5030B (Water)

Matrix Spike Dup (B1D1615-MSD1)		Source: Y104268-01			Prepared: 04/16/2021 Analyzed: 04/19/2021					
Benzene	0.223	0.00100	mg/L	0.0500	0.210	25.0	70-130	9.65	20	QM-07
Toluene	0.0465	0.00100	"	0.0500	0.000210	92.6	70-130	7.25	20	
Ethylbenzene	0.0502	0.00100	"	0.0500	0.000360	99.7	70-130	7.50	20	
m,p-Xylene	0.102	0.00200	"	0.100	0.000780	101	70-130	8.16	20	
o-Xylene	0.0530	0.00100	"	0.0500	ND	106	70-130	7.32	20	
Surrogate: 1,2-Dichloroethane-d4	0.059		"	0.0625		94.2	70-130			
Surrogate: Toluene-d8	0.063		"	0.0625		101	70-130			
Surrogate: 4-Bromofluorobenzene	0.062		"	0.0625		98.4	70-130			

Origins Laboratory, Inc.



The results in this report apply to the samples analyzed in accordance with the chain of custody document. This analytical report must be reproduced in its entirety.

CGRS, Inc
1301 Academy Court
Fort Collins CO 80524

Drezden Kinnaird
Project Number: 18304aa
Project: EWS #13

Volatile Organic Compounds by GC/MS SW846 8260D - Quality Control
Origins Laboratory, Inc.

Analyte	Result	Reporting Limit	Units	Spike Level	Source Result	%REC	%REC Limits	RPD	RPD Limit	Notes
---------	--------	-----------------	-------	-------------	---------------	------	-------------	-----	-----------	-------

Classical Chemistry Parameters - Quality Control
Origins Laboratory, Inc.

Analyte	Result	Reporting Limit	Units	Spike Level	Source Result	%REC	%REC Limits	RPD	RPD Limit	Notes
---------	--------	-----------------	-------	-------------	---------------	------	-------------	-----	-----------	-------

Batch B1D1605 - Filter .45um non acidified

Blank (B1D1605-BLK1)

Prepared: 04/16/2021 Analyzed: 04/17/2021

Chloride	ND	0.500	mg/L
Sulfate	ND	0.500	"

LCS (B1D1605-BS1)

Prepared: 04/16/2021 Analyzed: 04/17/2021

Chloride	2.00		mg/L	2.00	99.8	90-110
Sulfate	1.94		"	2.00	97.0	90-110

Matrix Spike (B1D1605-MS1)

Source: Y104275-01

Prepared: 04/16/2021 Analyzed: 04/17/2021

Chloride	823		mg/L	250	568	102	80-120
Sulfate	2620		"	250	2350	109	80-120

Matrix Spike Dup (B1D1605-MSD1)

Source: Y104275-01

Prepared: 04/16/2021 Analyzed: 04/17/2021

Chloride	820		mg/L	250	568	101	80-120	0.391	20
Sulfate	2600		"	250	2350	103	80-120	0.568	20

Batch B1D1903 - NO PREP

Blank (B1D1903-BLK1)

Prepared: 04/19/2021 Analyzed: 04/20/2021

Total Dissolved Solids	ND	5.00	mg/L
------------------------	----	------	------

LCS (B1D1903-BS1)

Prepared: 04/19/2021 Analyzed: 04/20/2021

Total Dissolved Solids	779	5.00	mg/L	716	109	85-115
------------------------	-----	------	------	-----	-----	--------

Duplicate (B1D1903-DUP1)

Source: Y104274-11

Prepared: 04/19/2021 Analyzed: 04/20/2021

Origins Laboratory, Inc.



The results in this report apply to the samples analyzed in accordance with the chain of custody document. This analytical report must be reproduced in its entirety.

CGRS, Inc
1301 Academy Court
Fort Collins CO 80524

Drezden Kinnaird
Project Number: 18304aa
Project: EWS #13

Classical Chemistry Parameters - Quality Control
Origins Laboratory, Inc.

Analyte	Result	Reporting Limit	Units	Spike Level	Source Result	%REC	%REC Limits	RPD	RPD Limit	Notes
---------	--------	-----------------	-------	-------------	---------------	------	-------------	-----	-----------	-------

Batch B1D1903 - NO PREP

Total Dissolved Solids	30400	5.00	mg/L		29500			3.09	20	
------------------------	-------	------	------	--	-------	--	--	------	----	--

Origins Laboratory, Inc.



The results in this report apply to the samples analyzed in accordance with the chain of custody document. This analytical report must be reproduced in its entirety.

CGRS, Inc
1301 Academy Court
Fort Collins CO 80524

Drezden Kinnaird
Project Number: 18304aa
Project: EWS #13

Notes and Definitions

U Sample is Non-Detect.

QM-07 The spike recovery was outside acceptance limits for the MS and/or MSD. The batch was accepted based on acceptable LCS recovery.

ND Analyte NOT DETECTED at or above the reporting limit

RPD Relative Percent Difference

All soil results are reported at a wet weight basis.

Origins Laboratory, Inc.



The results in this report apply to the samples analyzed in accordance with the chain of custody document. This analytical report must be reproduced in its entirety.