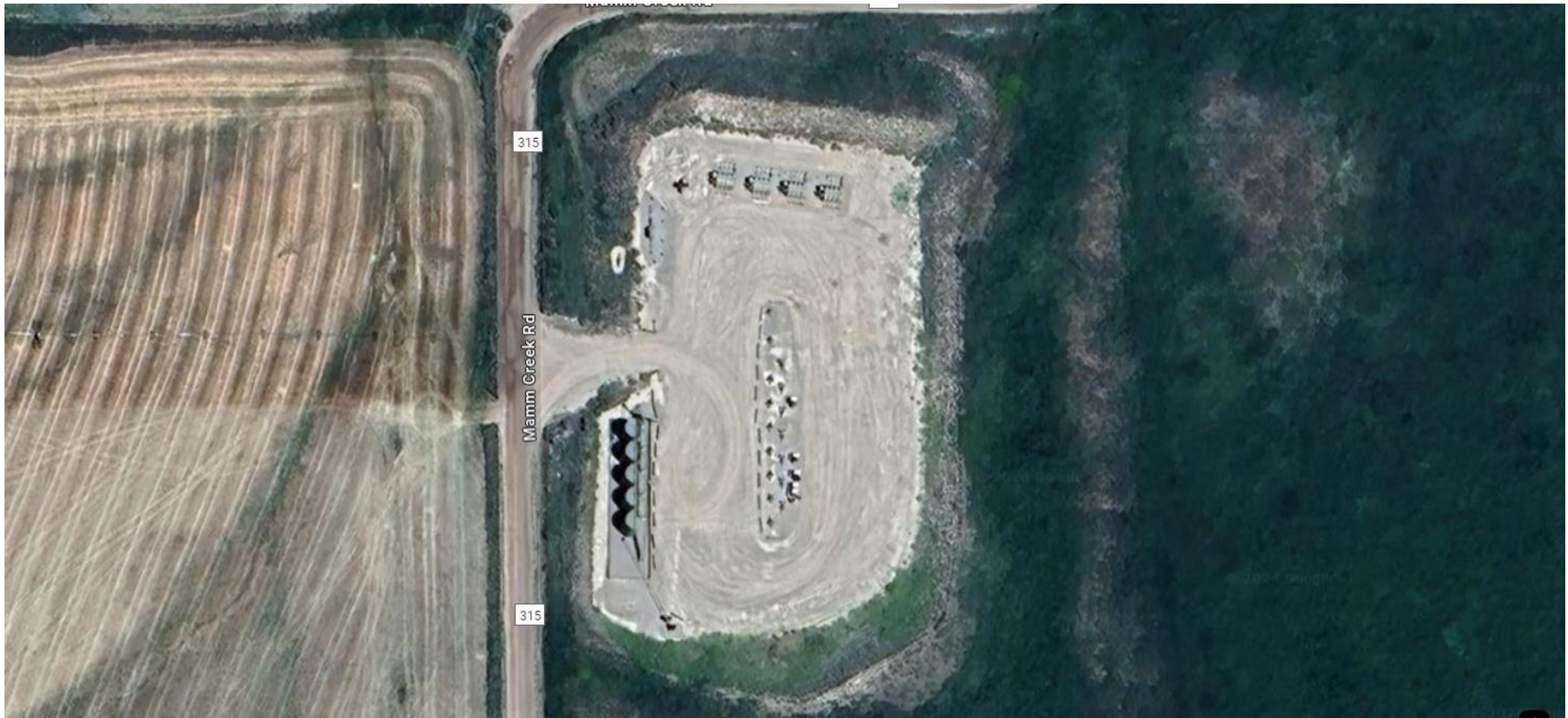


**Storm Water Management and Erosion control**  
**Location Name: QB ENERGY SHIDELER 25-9C1 (C31E) Pad**  
**Location #: 414530**



**Location Overview: Location is within Black Bear Habitat area  
& in close proximity to High Priority/Density/NSO Habitat  
areas. Location is approximately 350 yards from Middle  
Mamm Creek.**

**Section/Township/Range: 31 7S92W**





**Storm water Management and Erosion control**  
**Location Name: QB ENERGY SHIDELER 25-9C1 (C31E) Pad**  
**Location #: 414530**



**North West corner of location.**



**North East corner of location.**



**South West corner of location.**



**South East corner of location.**