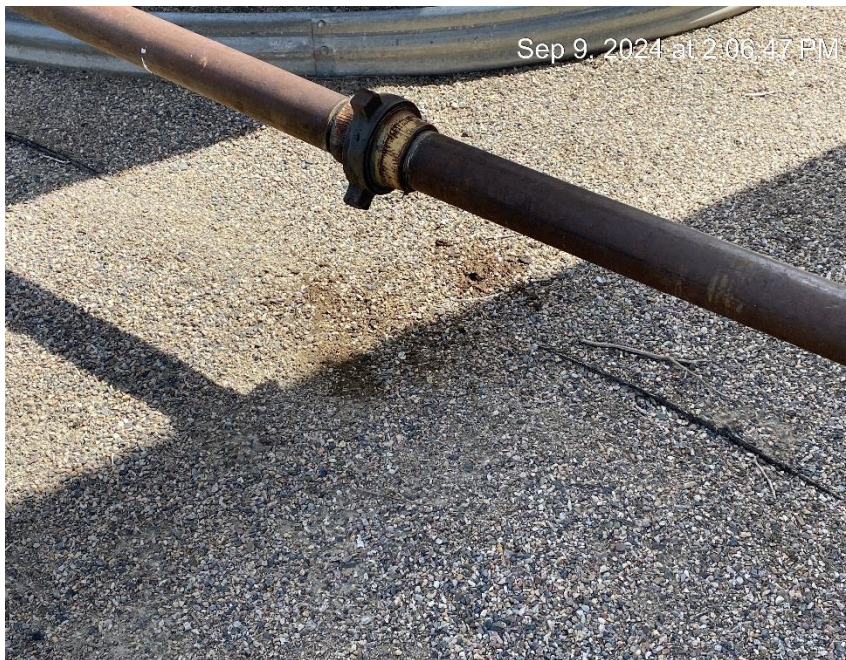


**Beeman Oil & Gas Inc.**  
**Stoddard 33-30**  
**Location ID: 423933**



**Partially covered staining**



**Debris**



Beeman Oil & Gas Inc.  
Stoddard 33-30  
Location ID: 423933



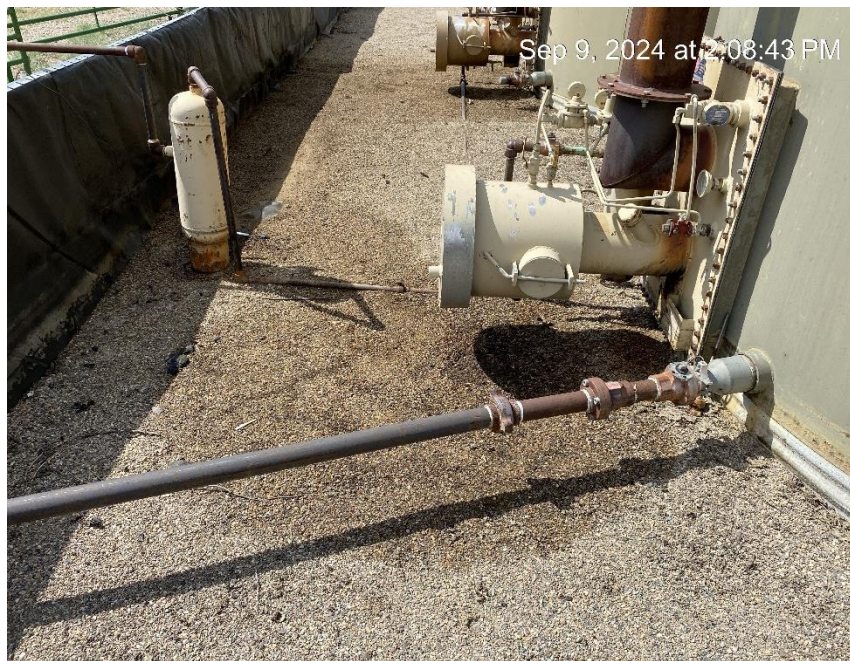
Side valve open. Load line was double-valved.



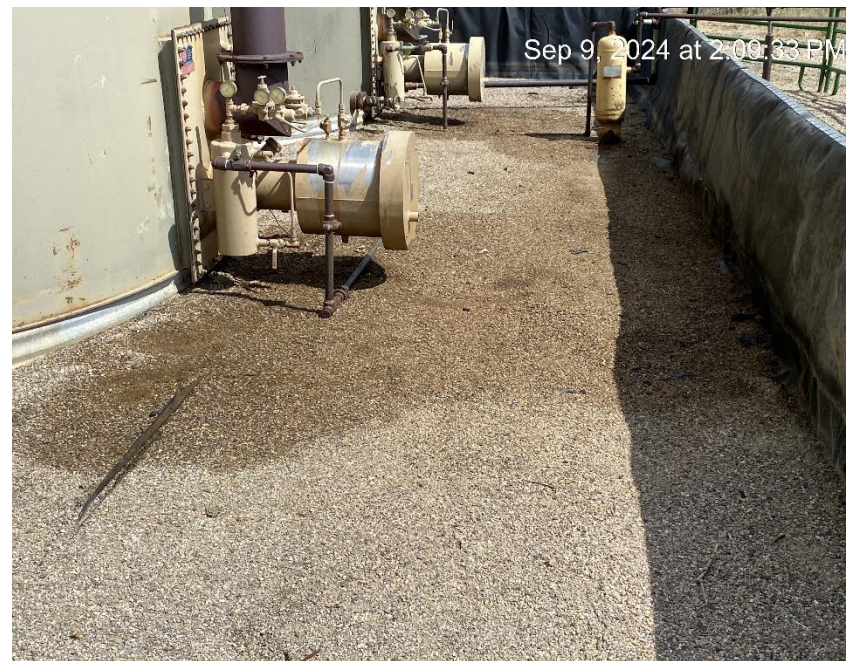
Partially covered spill



Beeman Oil & Gas Inc.  
Stoddard 33-30  
Location ID: 423933



**Spill staining**



**Spill staining**



Beeman Oil & Gas Inc.  
Stoddard 33-30  
Location ID: 423933



**Staining**



**Partially covered stain.**



Beeman Oil & Gas Inc.  
Stoddard 33-30  
Location ID: 423933



**Debris**



**Debris. Oily waste.**



**Beeman Oil & Gas Inc.  
Stoddard 33-30  
Location ID: 423933**



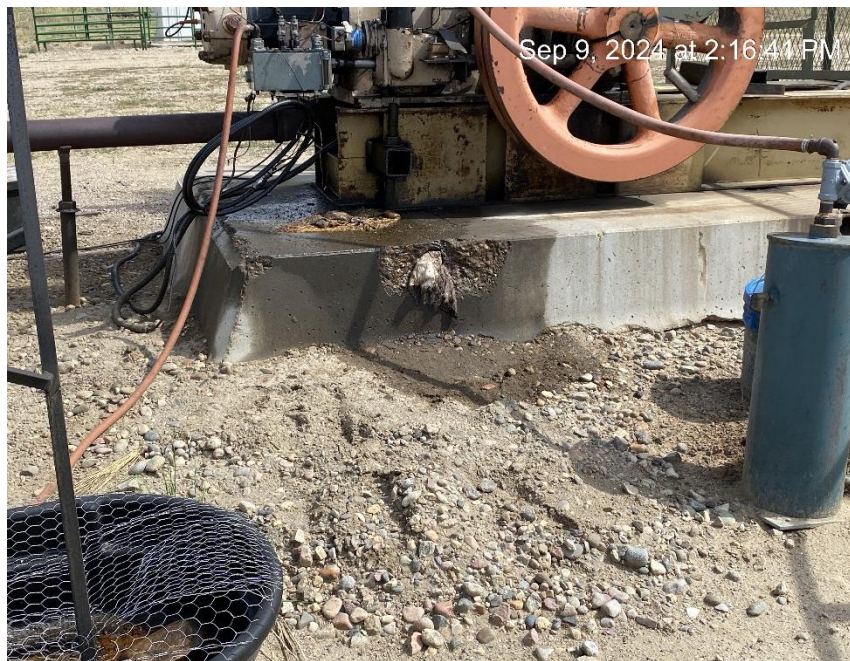
**Debris. Oily waste.**



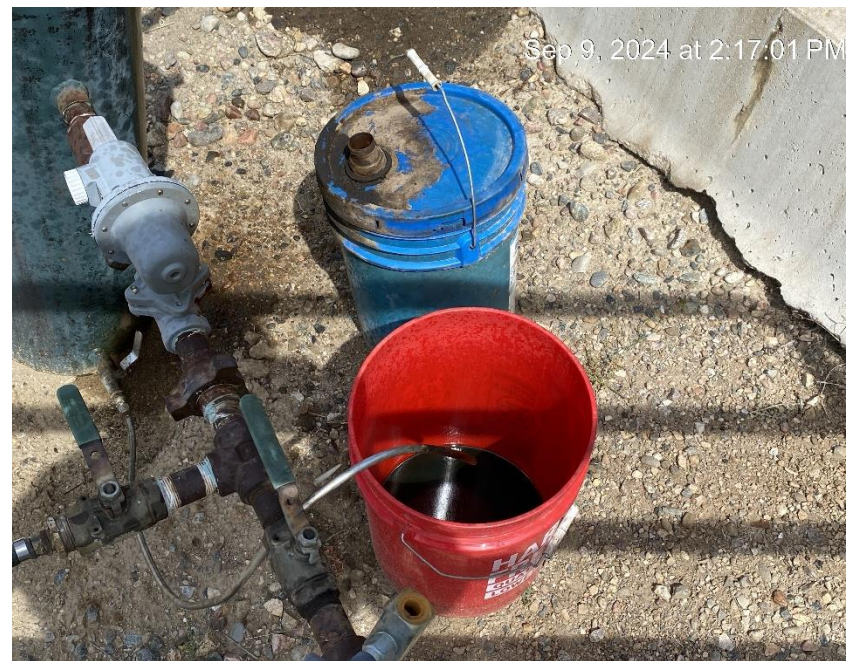
**Containment leak**



**Beeman Oil & Gas Inc.  
Stoddard 33-30  
Location ID: 423933**



**Equipment leak. Oily waste and stained soil**



**Open to wildlife**



**Beeman Oil & Gas Inc.  
Stoddard 33-30  
Location ID: 423933**



**Stained soil**



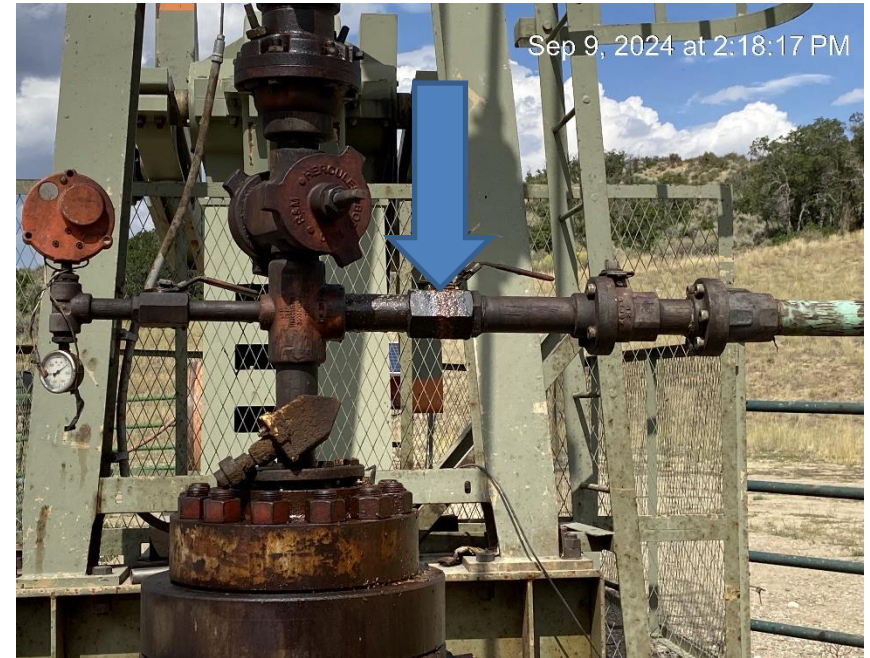
**Debris**



Beeman Oil & Gas Inc.  
Stoddard 33-30  
Location ID: 423933



Dedris



Valve leak



**Beeman Oil & Gas Inc.  
Stoddard 33-30  
Location ID: 423933**



**Location from Southwest corner**



**Location from Northwest corner**