

TEP Rocky Mountain LLC  
Federal RGU 43-28-198  
Location ID: 433287



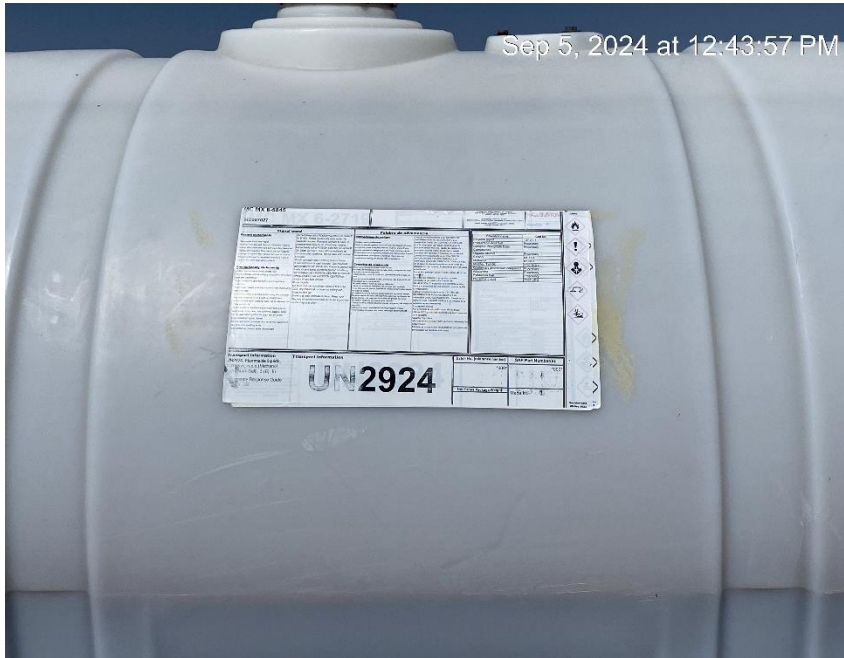
**Unused equipment**



**Unused equipment**



TEP Rocky Mountain LLC  
Federal RGU 43-28-198  
Location ID: 433287



**Faded and illegible label needs replaced**



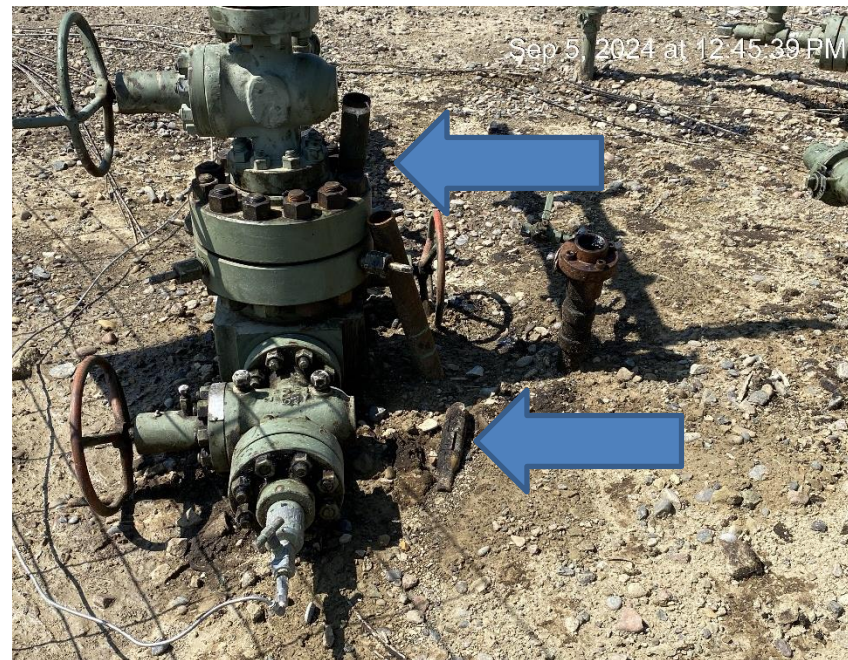
**Oily waste and stained soil**



**TEP Rocky Mountain LLC  
Federal RGU 43-28-198  
Location ID: 433287**



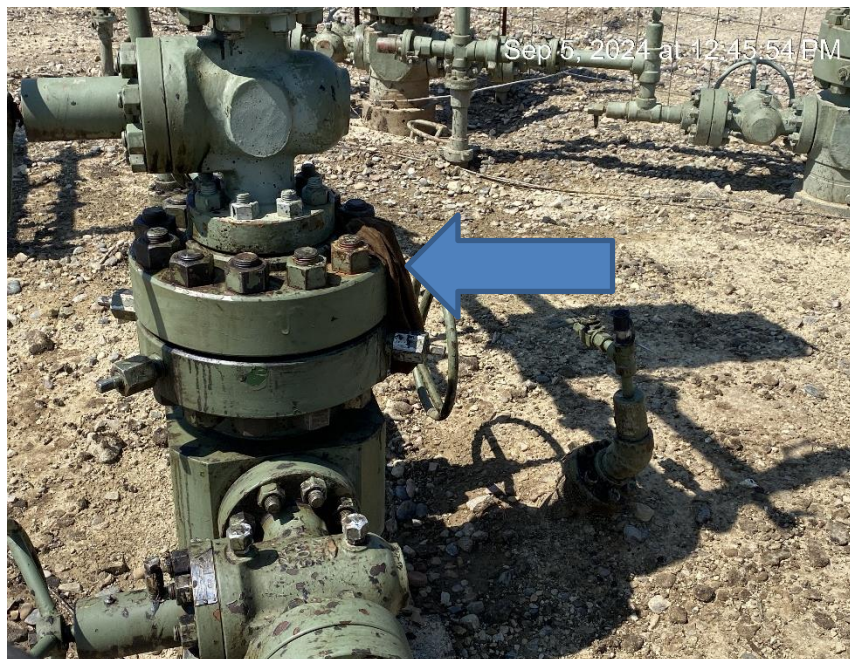
**Oily waste and stained soil**



**Debris**



TEP Rocky Mountain LLC  
Federal RGU 43-28-198  
Location ID: 433287



Debris



Debris



TEP Rocky Mountain LLC  
Federal RGU 43-28-198  
Location ID: 433287



Debris



Unable to inspect

TEP Rocky Mountain LLC  
Federal RGU 43-28-198  
Location ID: 43287



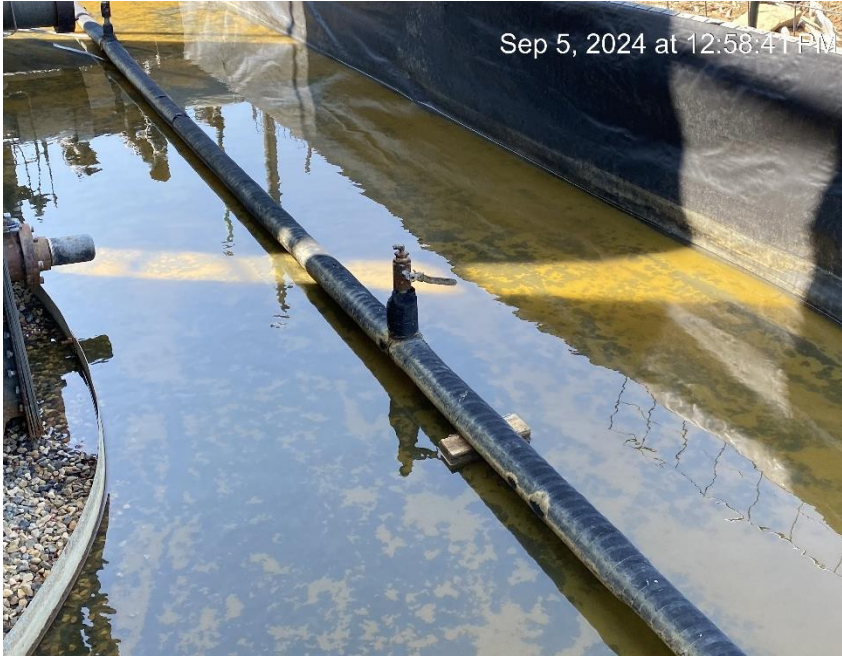
Tank out of service



Tank out of service



**TEP Rocky Mountain LLC  
Federal RGU 43-28-198  
Location ID: 433287**

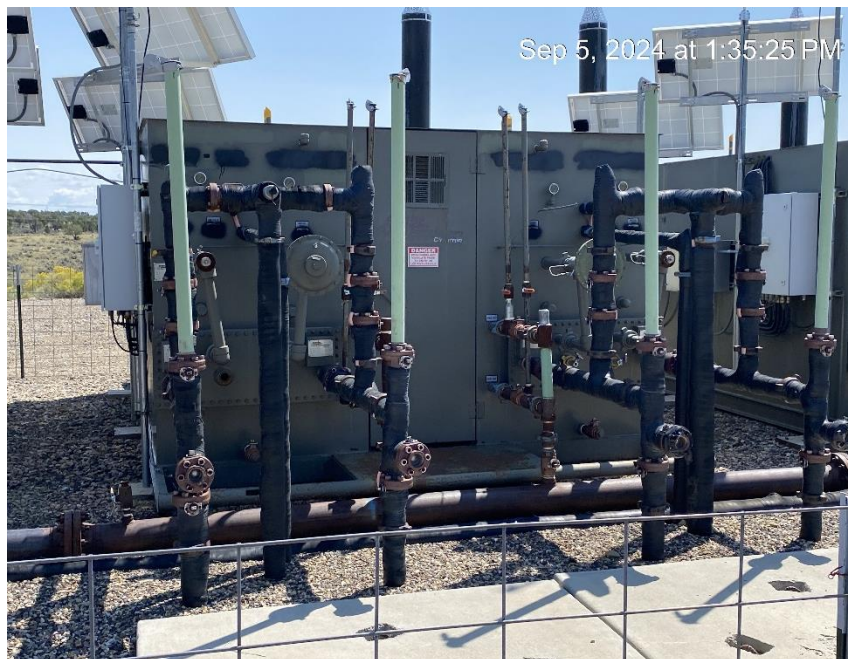


**Handles on unplugged gas line valves creating a hazardous condition.**

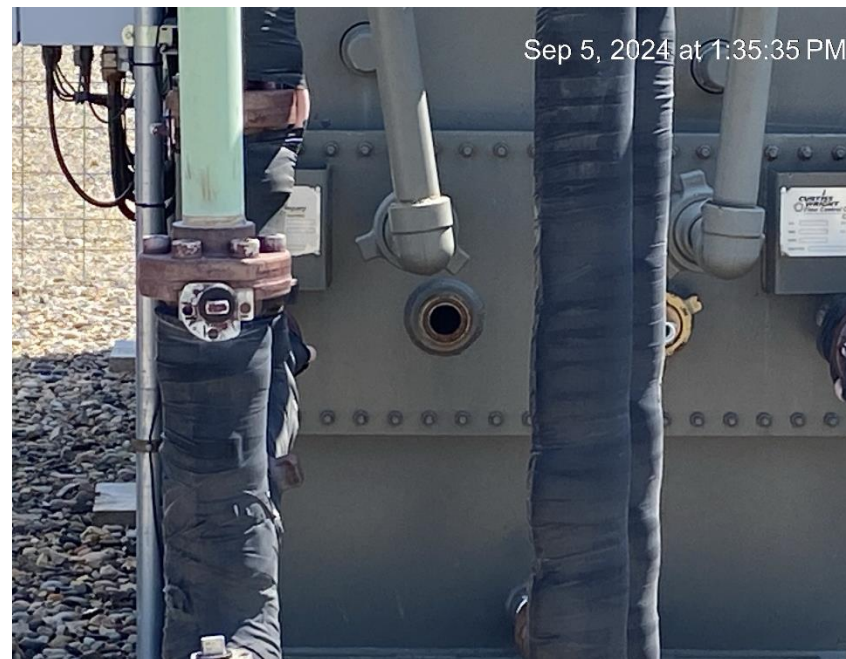


**Handles on unplugged gas line valves creating a hazardous condition.**

TEP Rocky Mountain LLC  
Federal RGU 43-28-198  
Location ID: 433287



**Equipment out of service**



**Separator open to wildlife**



**TEP Rocky Mountain LLC  
Federal RGU 43-28-198  
Location ID: 433287**



**Well pad from the East entrance**



**Production facilities from the East entrance**



**TEP Rocky Mountain LLC  
Federal RGU 43-28-198  
Location ID: 433287**



**Location from the North**



**Location from Southwest corner**